

Где звук живёт?

Составила Деева О.И.
воспитатель
МДОУ № 460
г. Челябинск



Где чья схема?

А



О



У



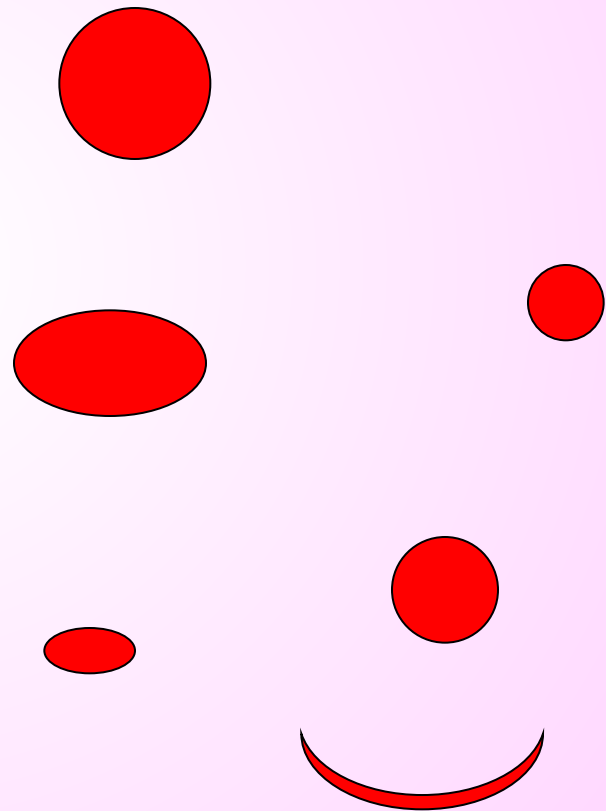
И



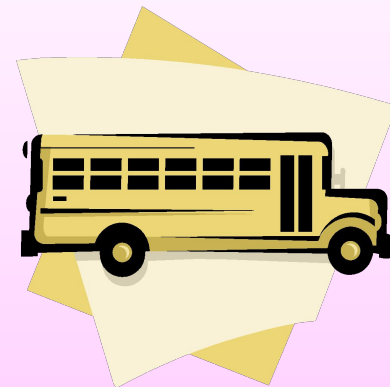
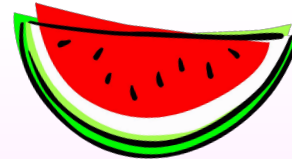
Э



Ы

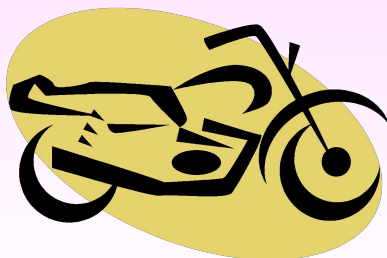
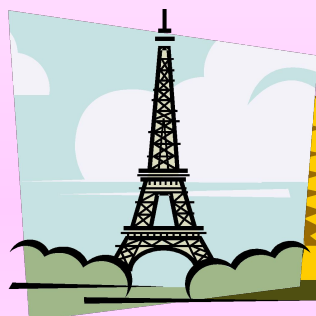
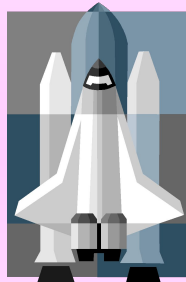
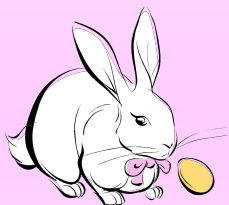
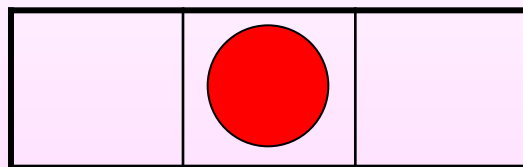
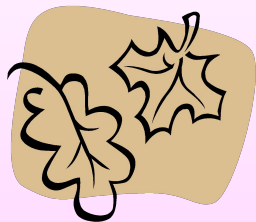
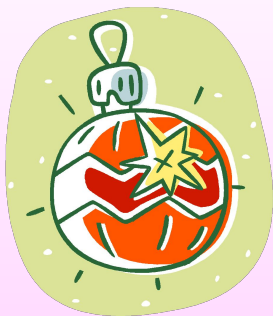


A



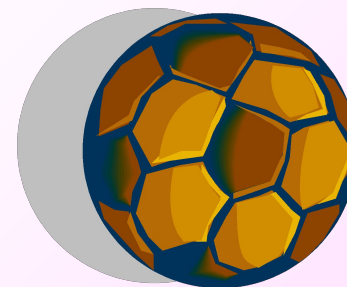
Найди слова со звуком **A** в начале.

А



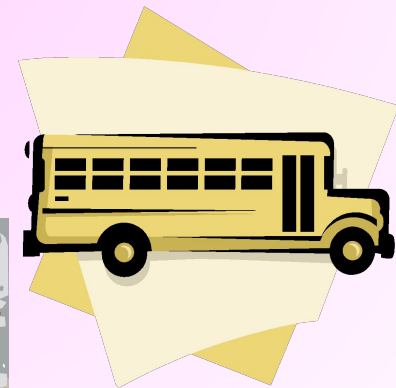
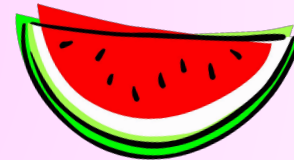
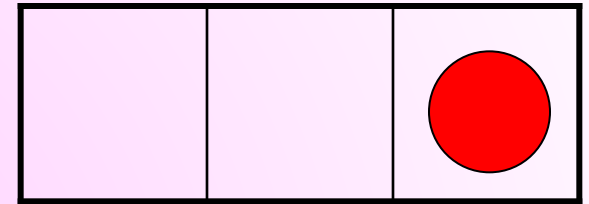
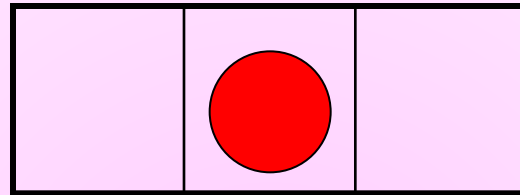
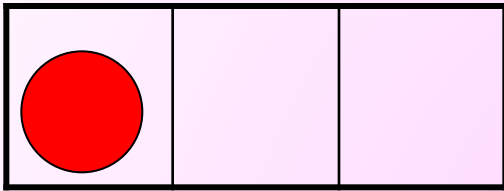
Найди слова со звуком **А** в середине.

A



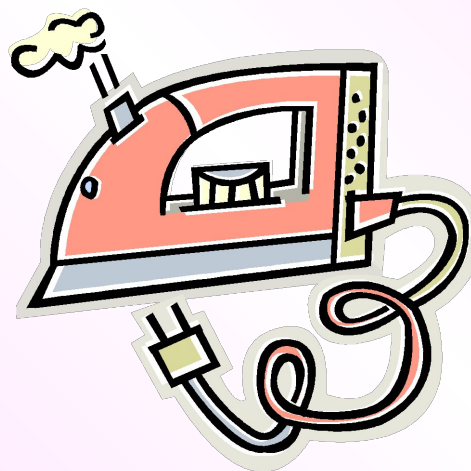
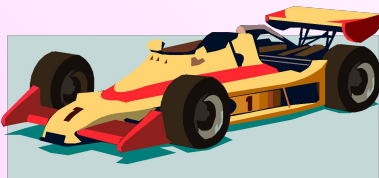
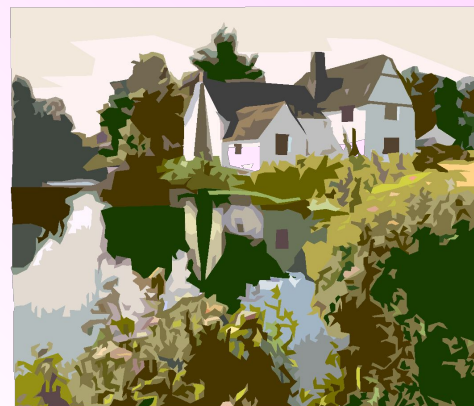
Найди слова со звуком **A** в конце.

Кто где живёт?

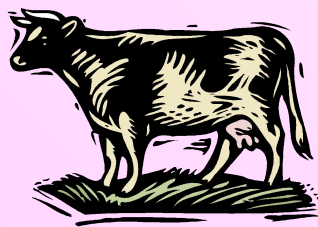
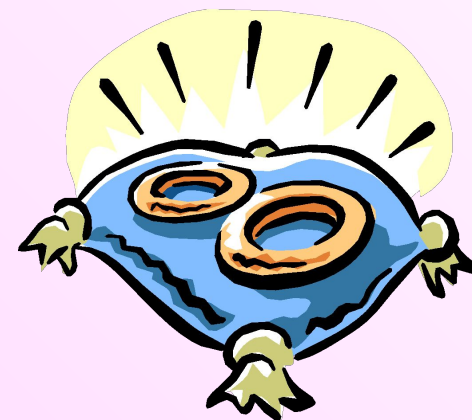
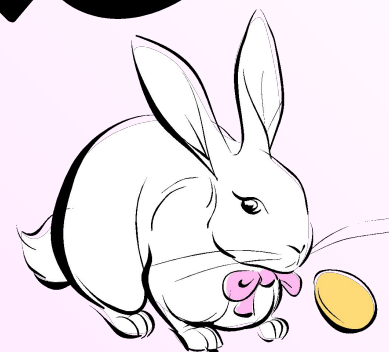
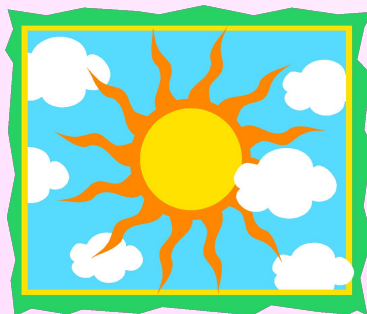
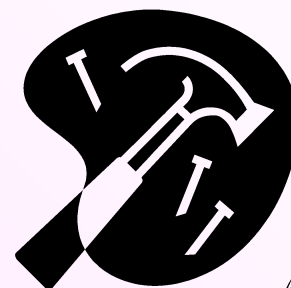
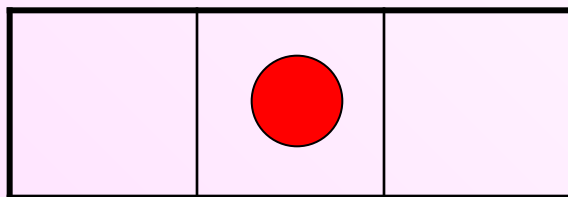


О

●		
---	--	--



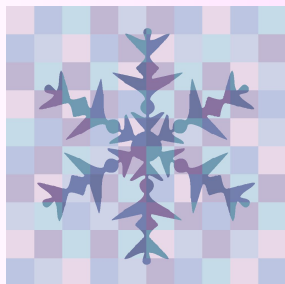
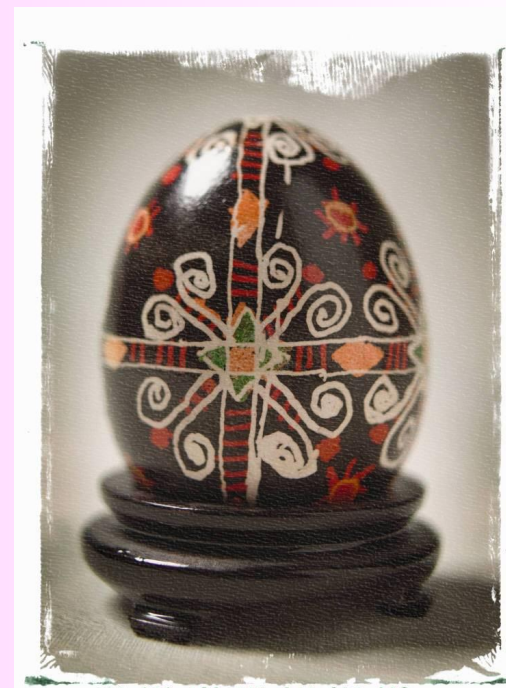
Найди слова со звуком **О** в начале.



Найди слова со звуком **О** в середине.

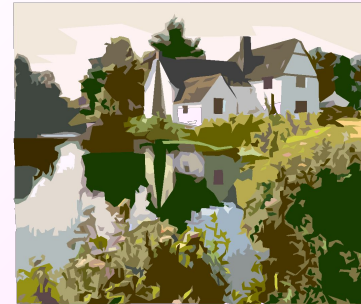
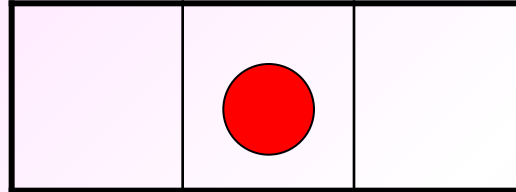
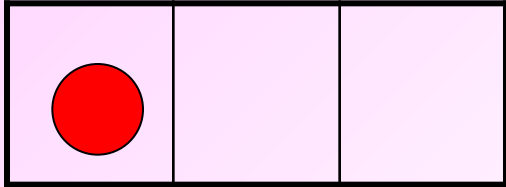


О

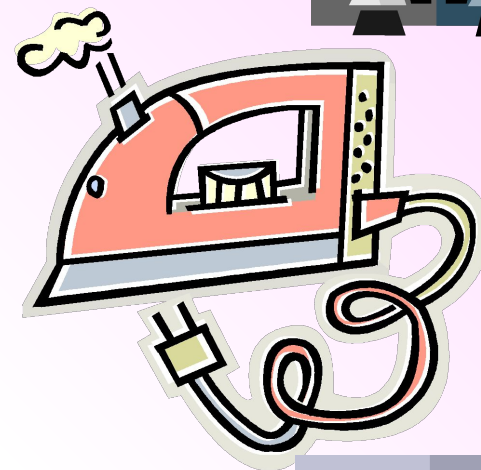
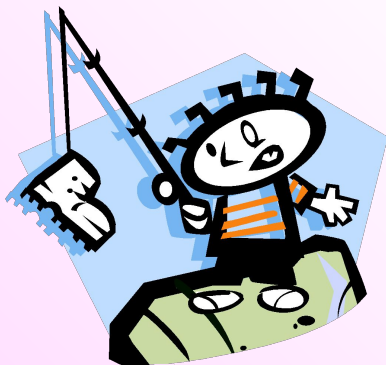
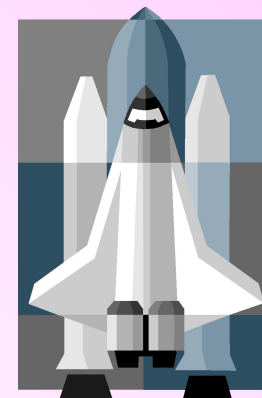
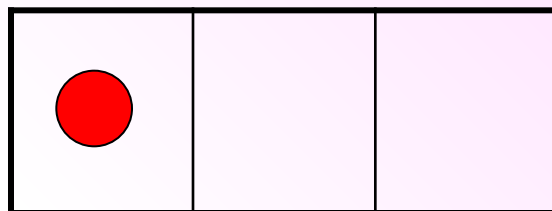
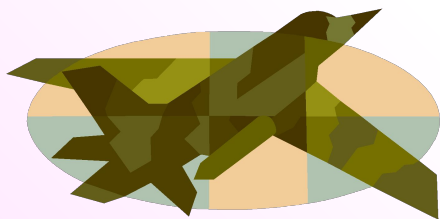


Найди слова со звуком **О** в конце.

Кто где живёт?

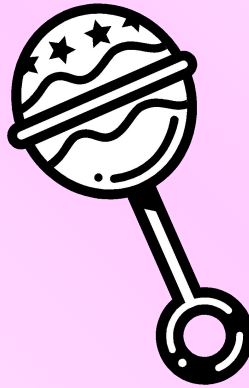
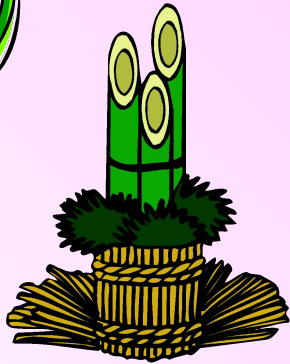
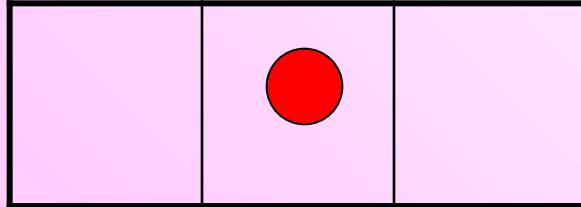


у



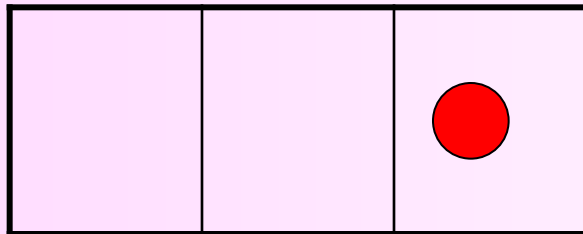
Найди слова со звуком **У** в начале.

у

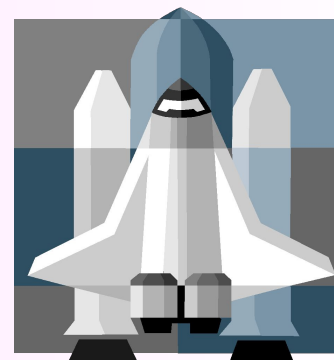


Найди слова со звуком **У** в середине.

у

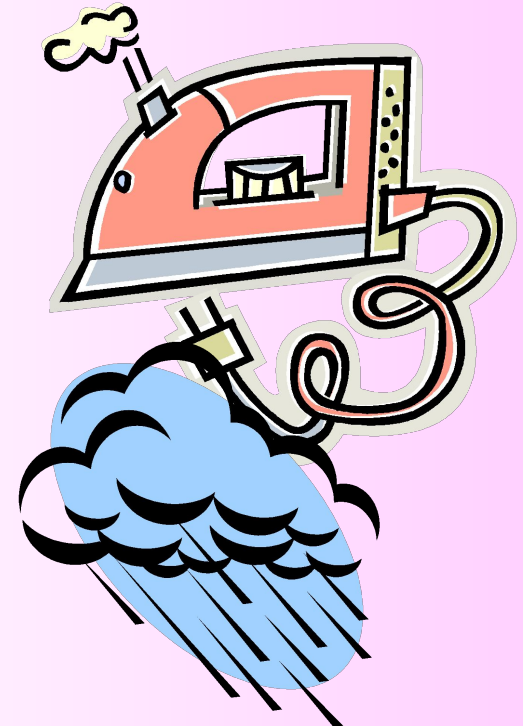
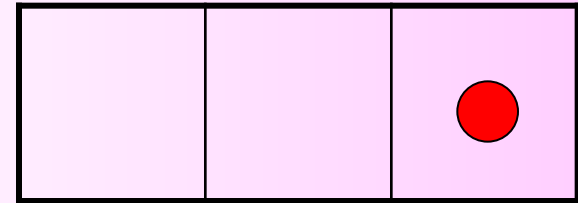
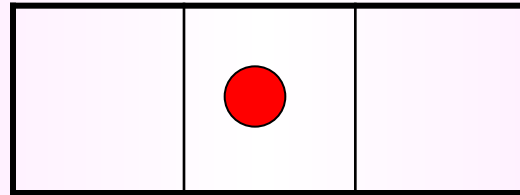
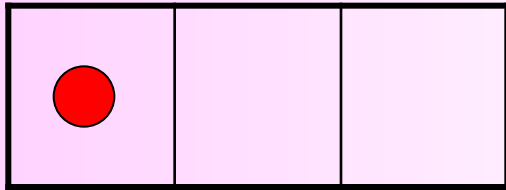


- Марабу
(птица семейства журавлей)

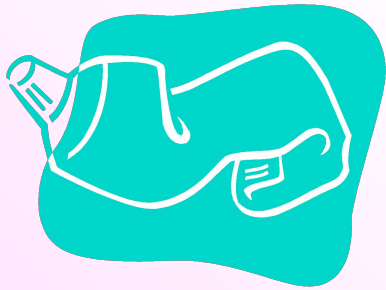
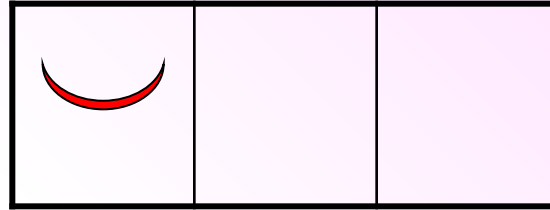


Найди слова со звуком **У** в конце.

Кто где живёт?

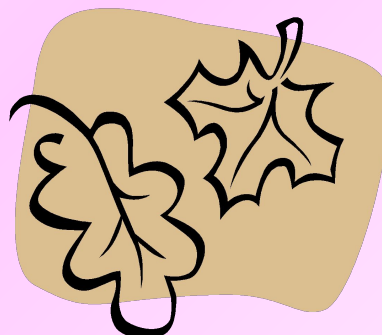
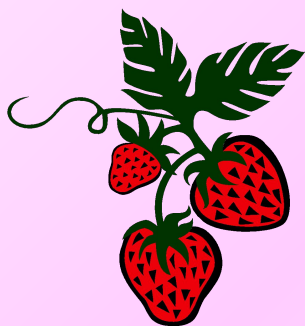
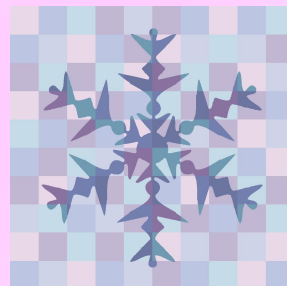
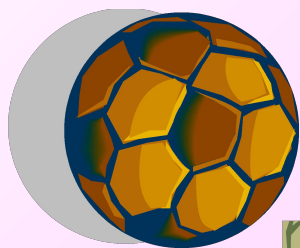
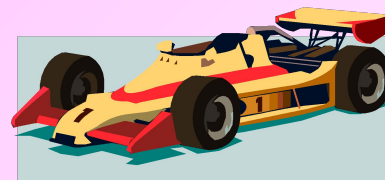
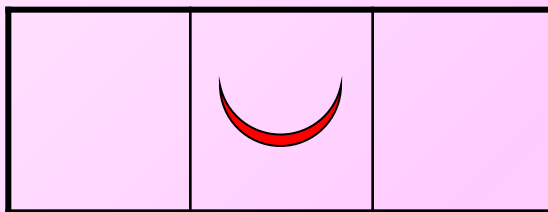


И



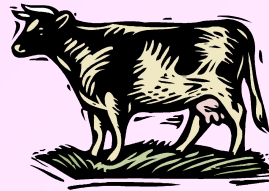
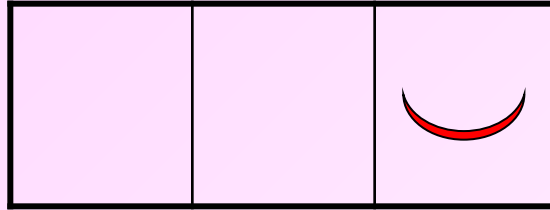
Найди слова со звуком **И** в начале.

И



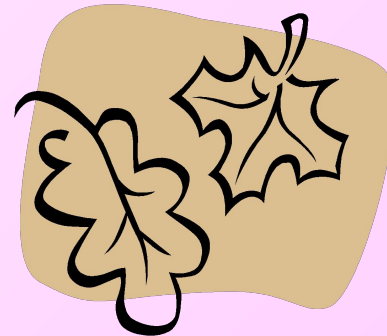
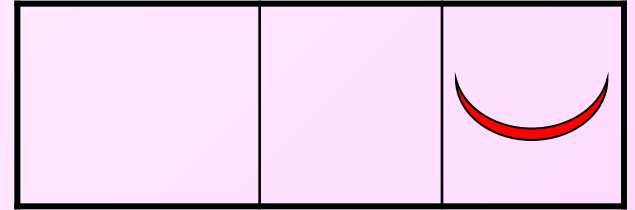
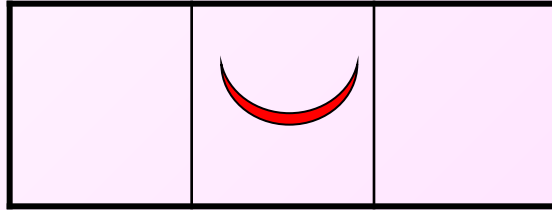
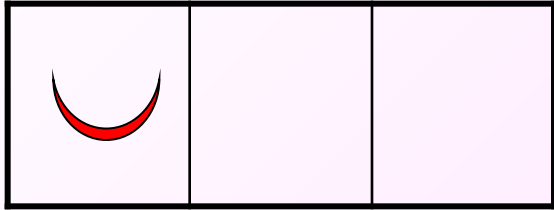
Найди слова со звуком **И** в середине.

И



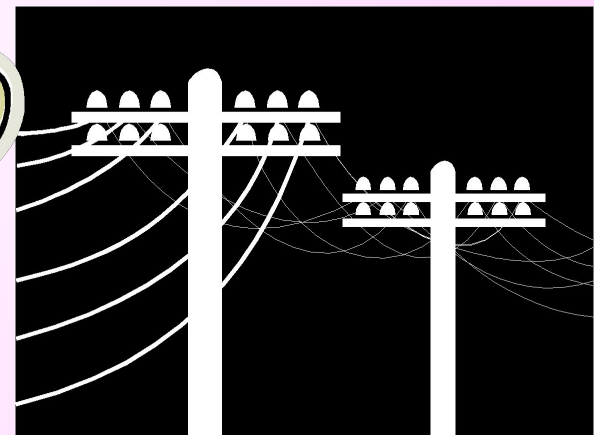
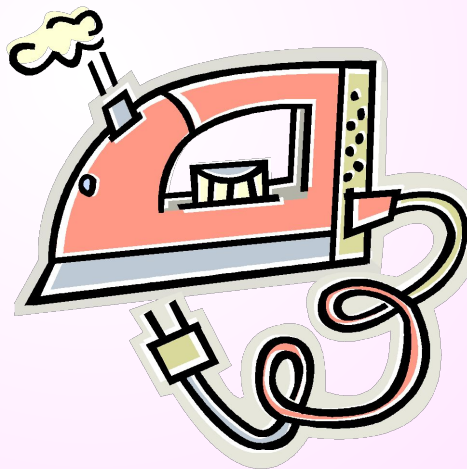
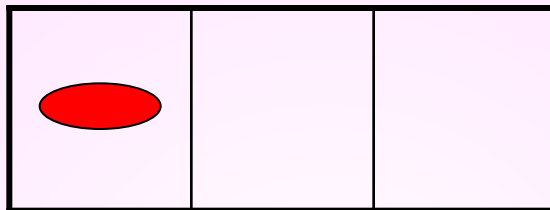
Найди слова со звуком **И** в конце.

Кто где живёт?



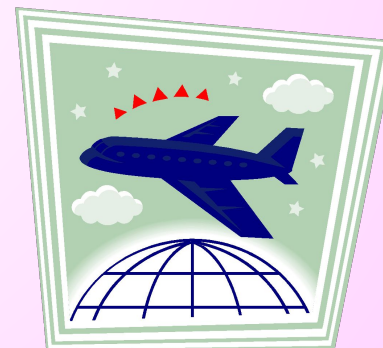
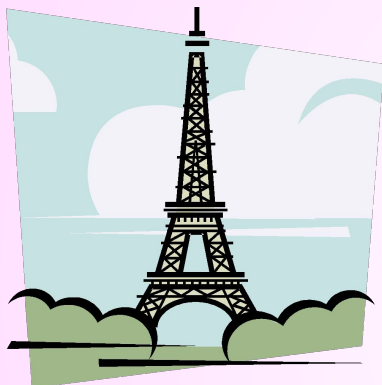
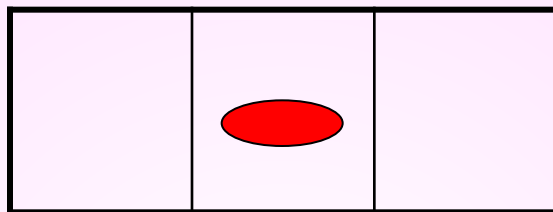


Э



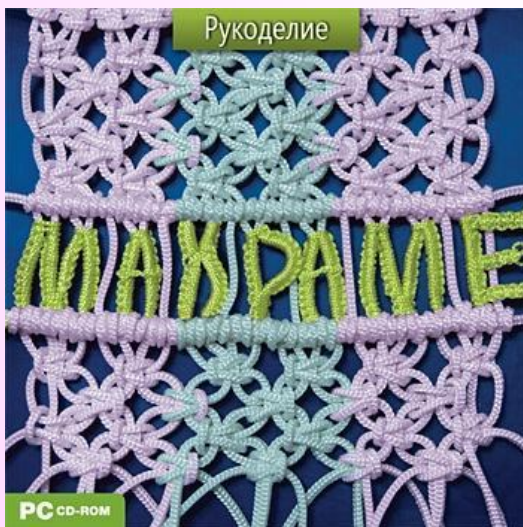
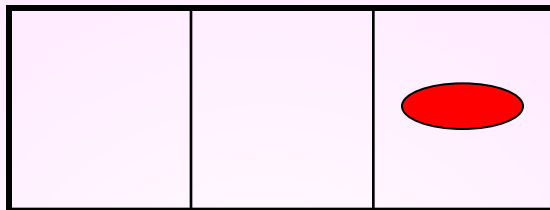
Найди слова со звуком Э в начале.

Э



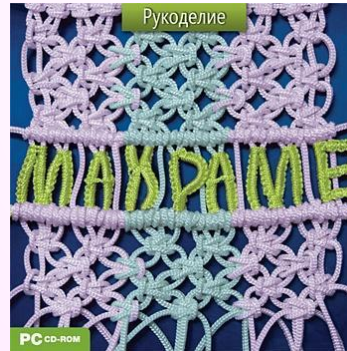
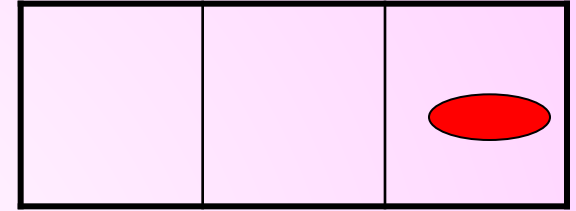
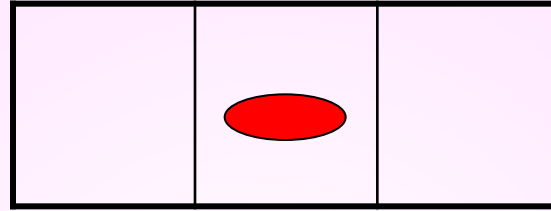
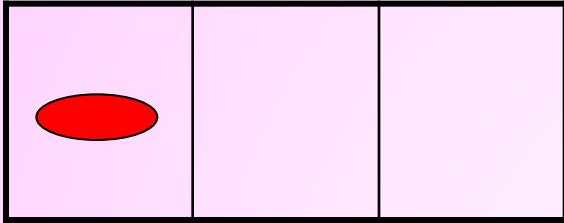
Найди слова со звуком **э** в середине.

Э

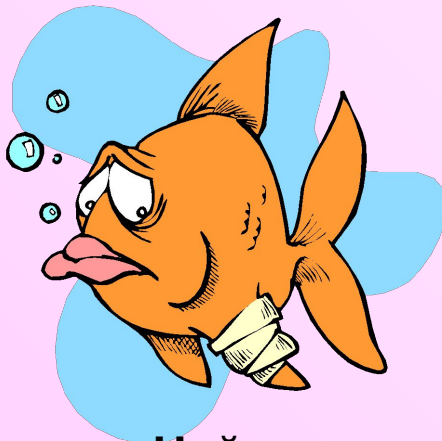
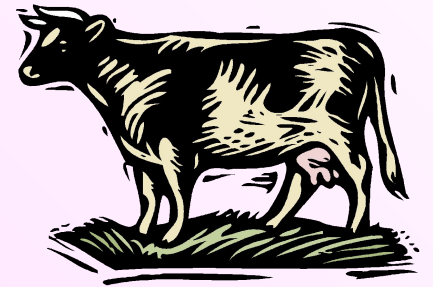
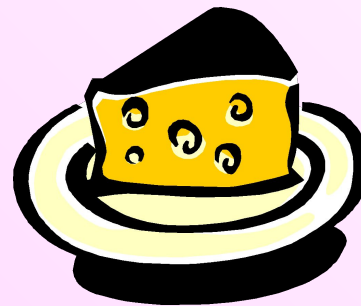
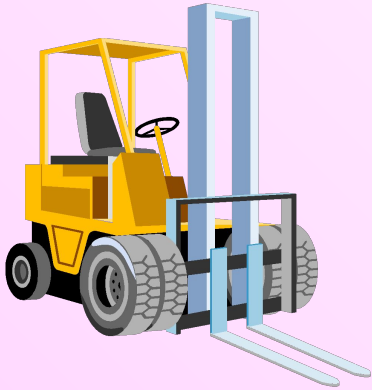
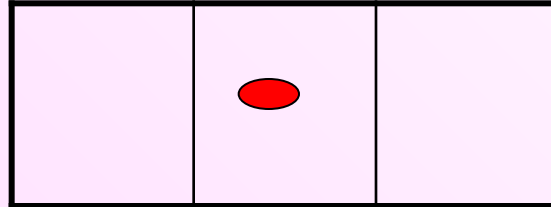


Найди слова со звуком Э в конце.

Кто где живёт?

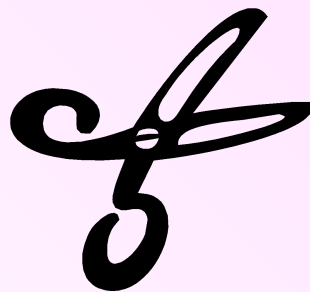
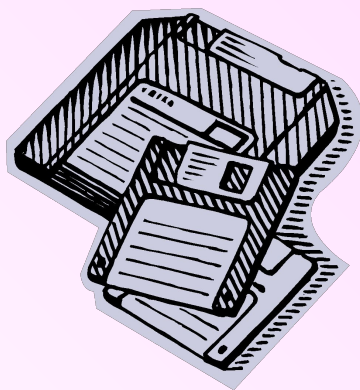
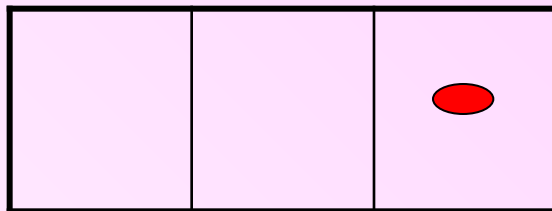


Ы



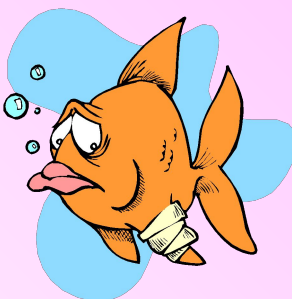
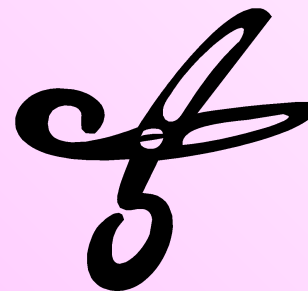
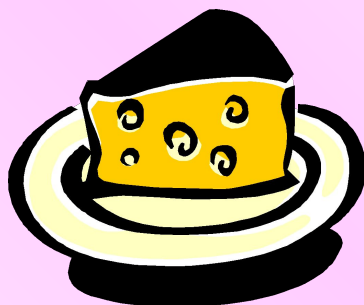
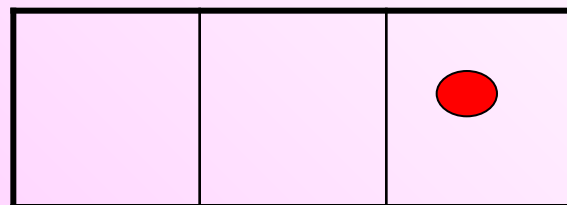
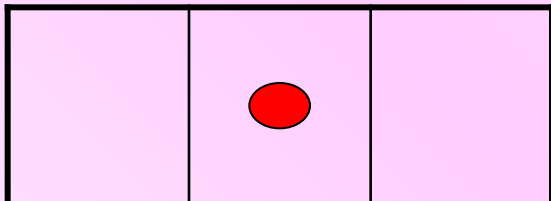
Найди слова со звуком **Ы** в середине.

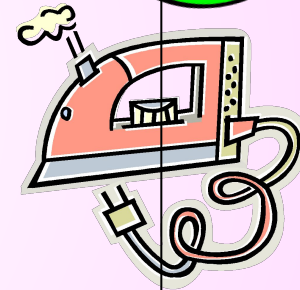
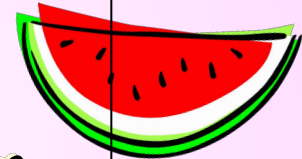
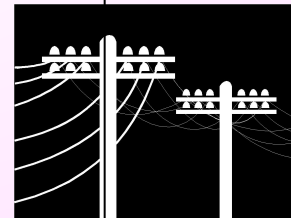
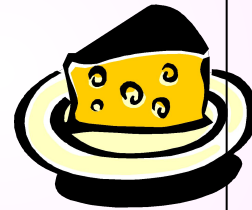
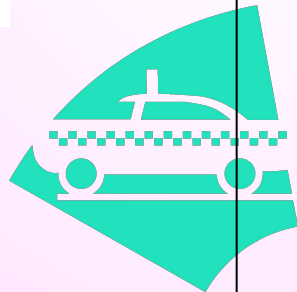
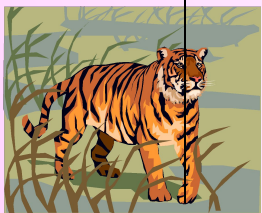
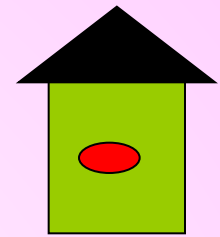
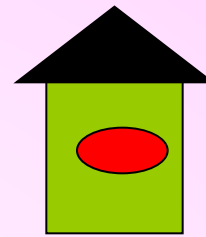
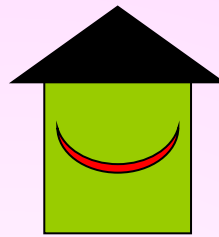
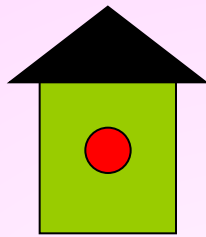
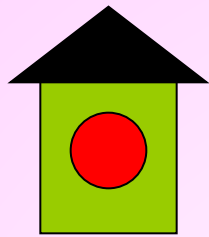
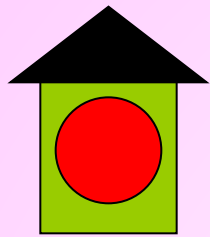
Ы



Найди слова со звуком **ы** в конце.

Кто где живёт?





Кто где живёт?



До свідання!



Список используемых источников

- О.С. Гомзяк «Говорим правильно»
Москва Издательство «ГНОМ и Д»
2007год
- Г.Ванюхина «Речецветик»
«Старсо» г. Екатеринбург 1993 год
- www.yandex.ru (картинки)

