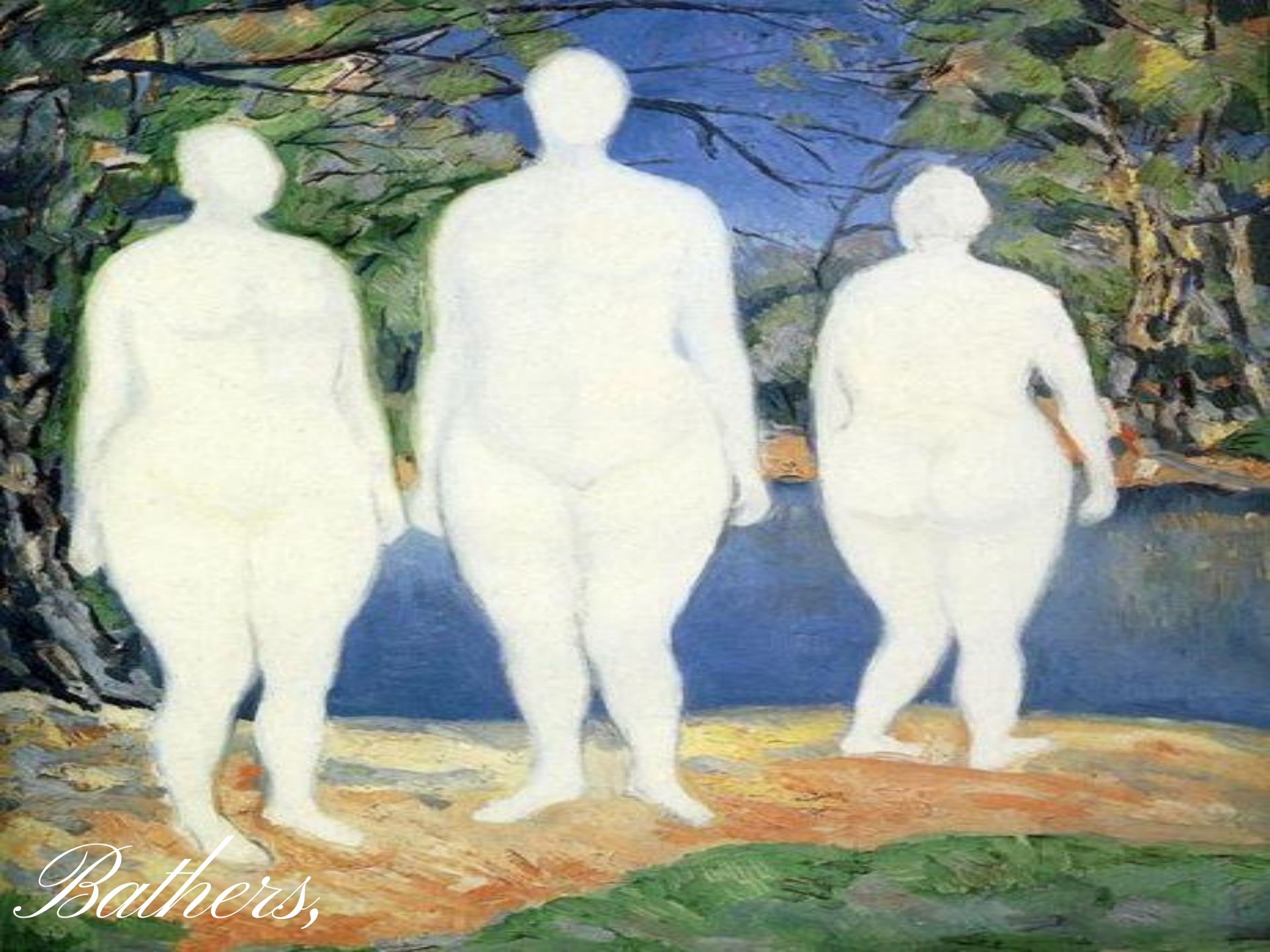


*Kazimir*



*Flower Girl,*



*Bathers,*



*Winter,*

Wassily Kandinsky  
1903



*Taking in the*



*The*



*Head of a Peasant Girl,*



*Bureau and*





*Portrait of*



*Cow and*

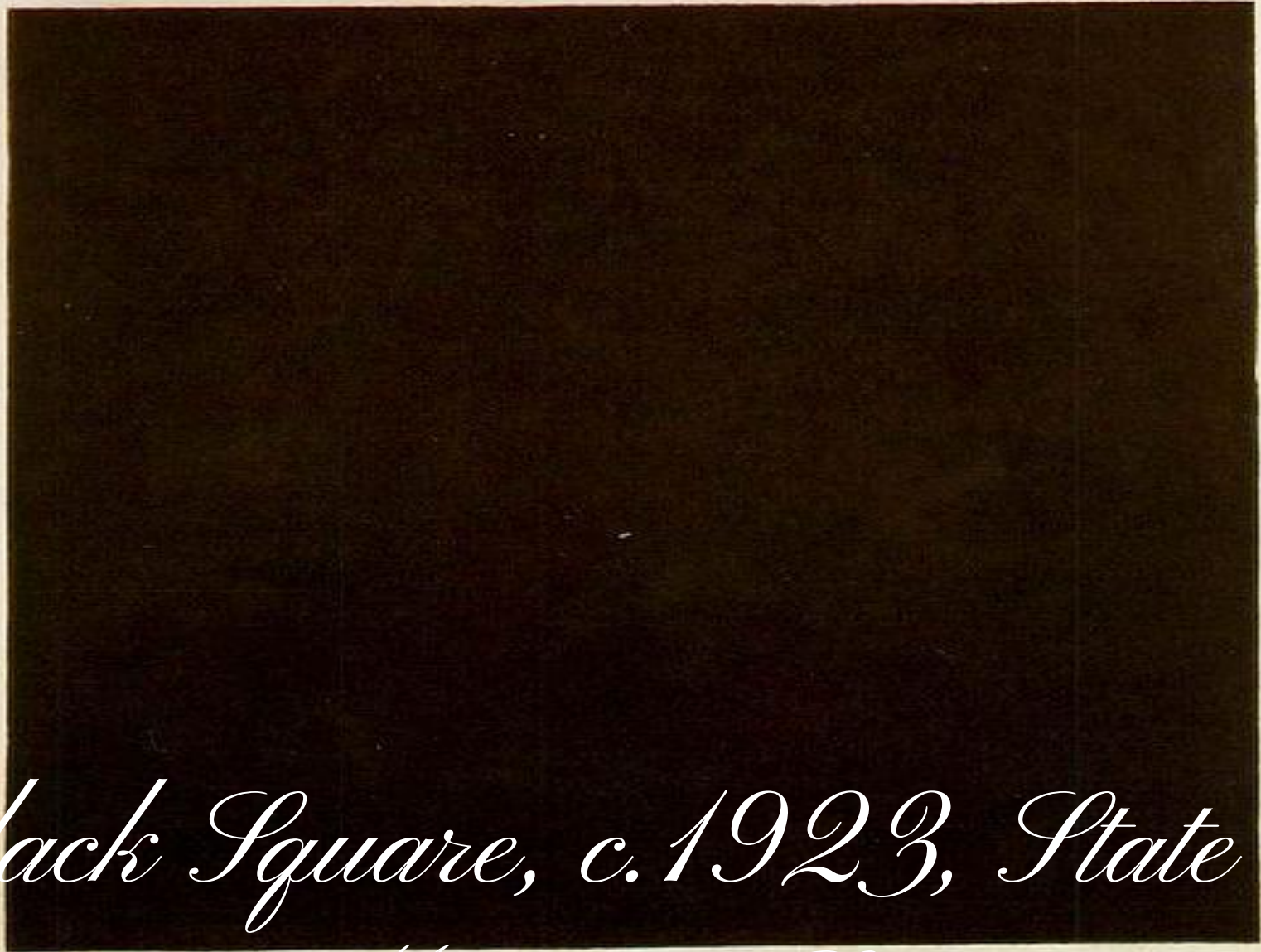


*Englishman in*

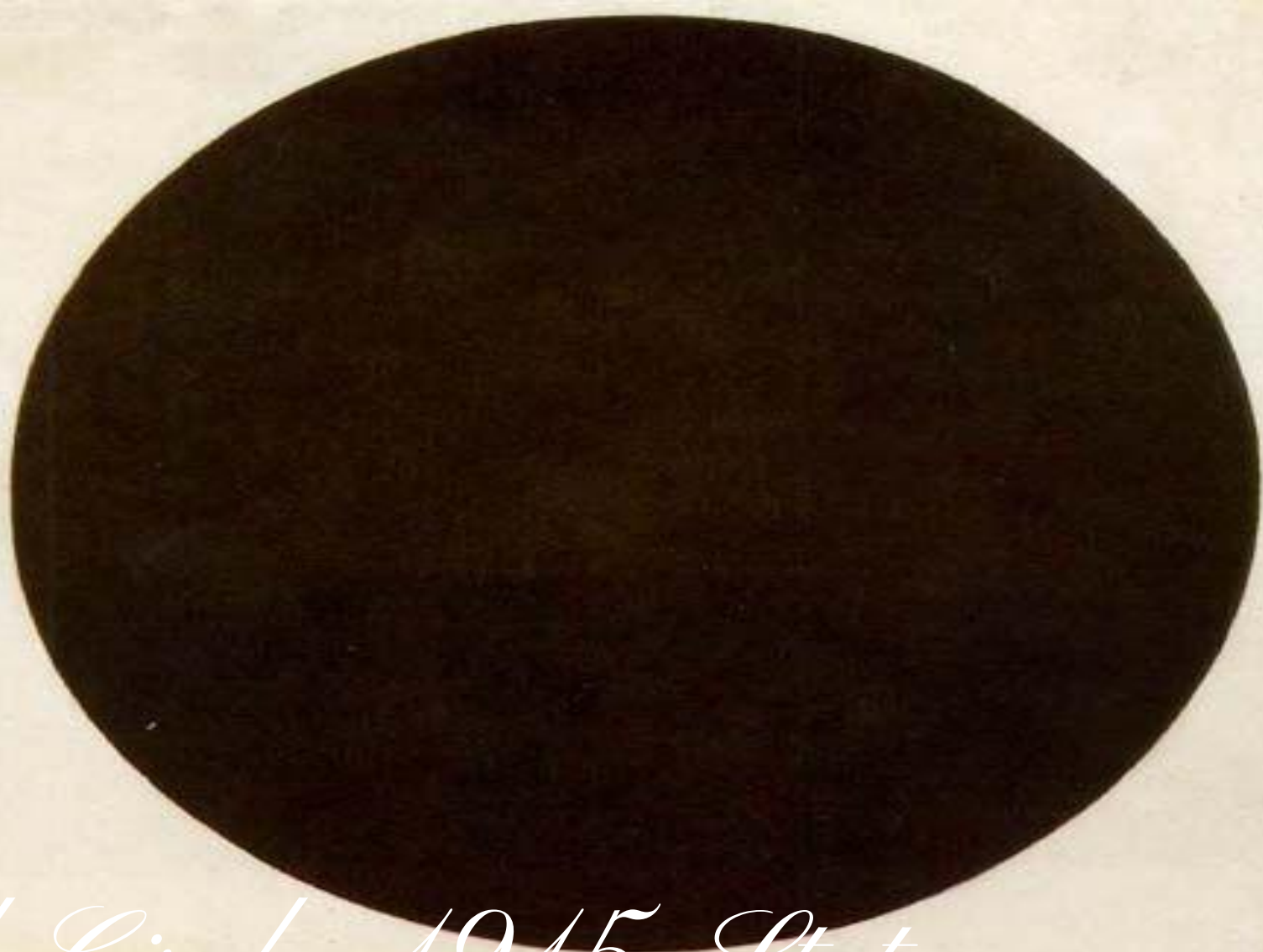


*Composition with the Mona*

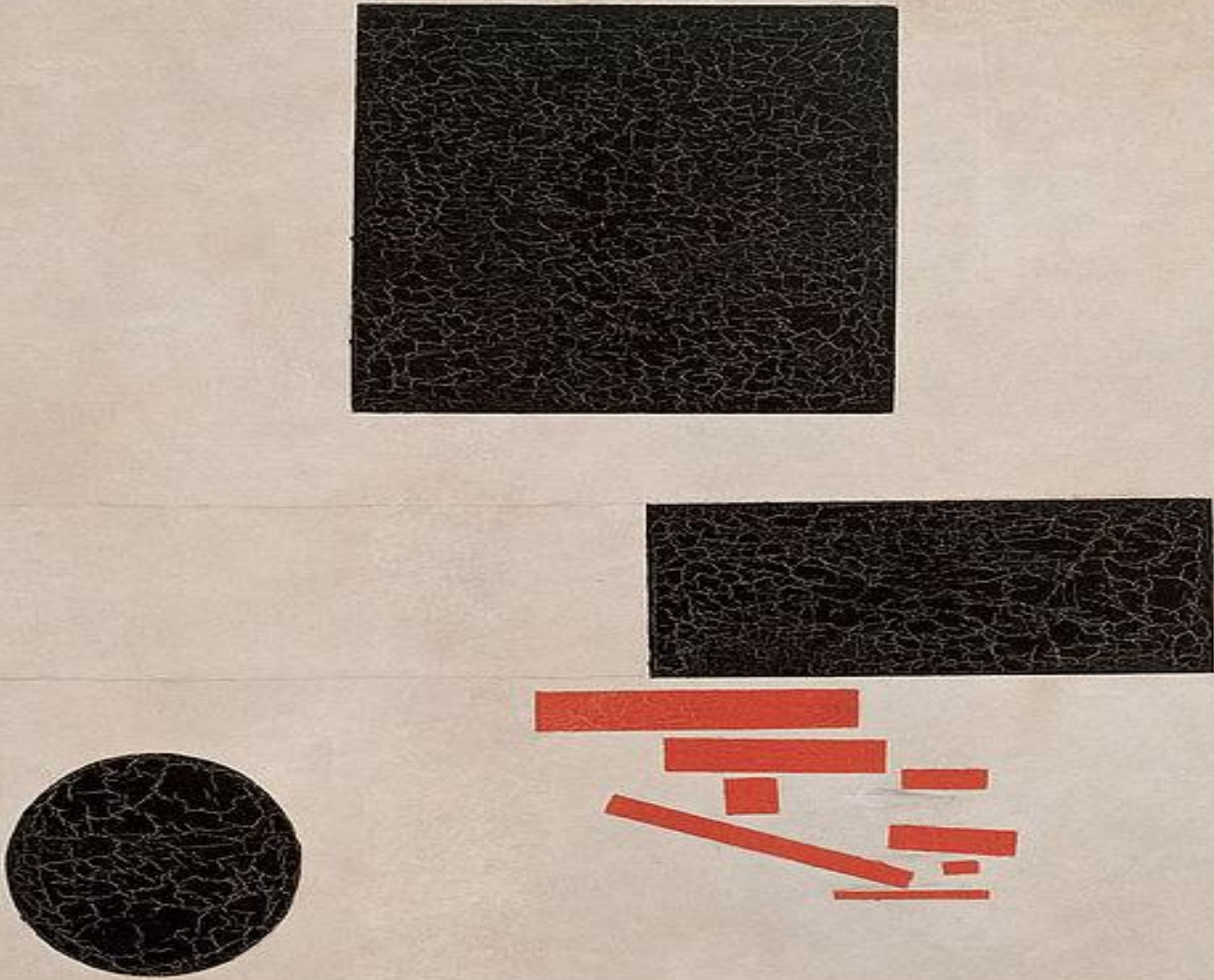
Малеви



*Black Square, c. 1923, State  
Russian Museum, St.*



*Black Circle, 1915, State  
Russian Museum, St.*



*Suprematist Composition,*

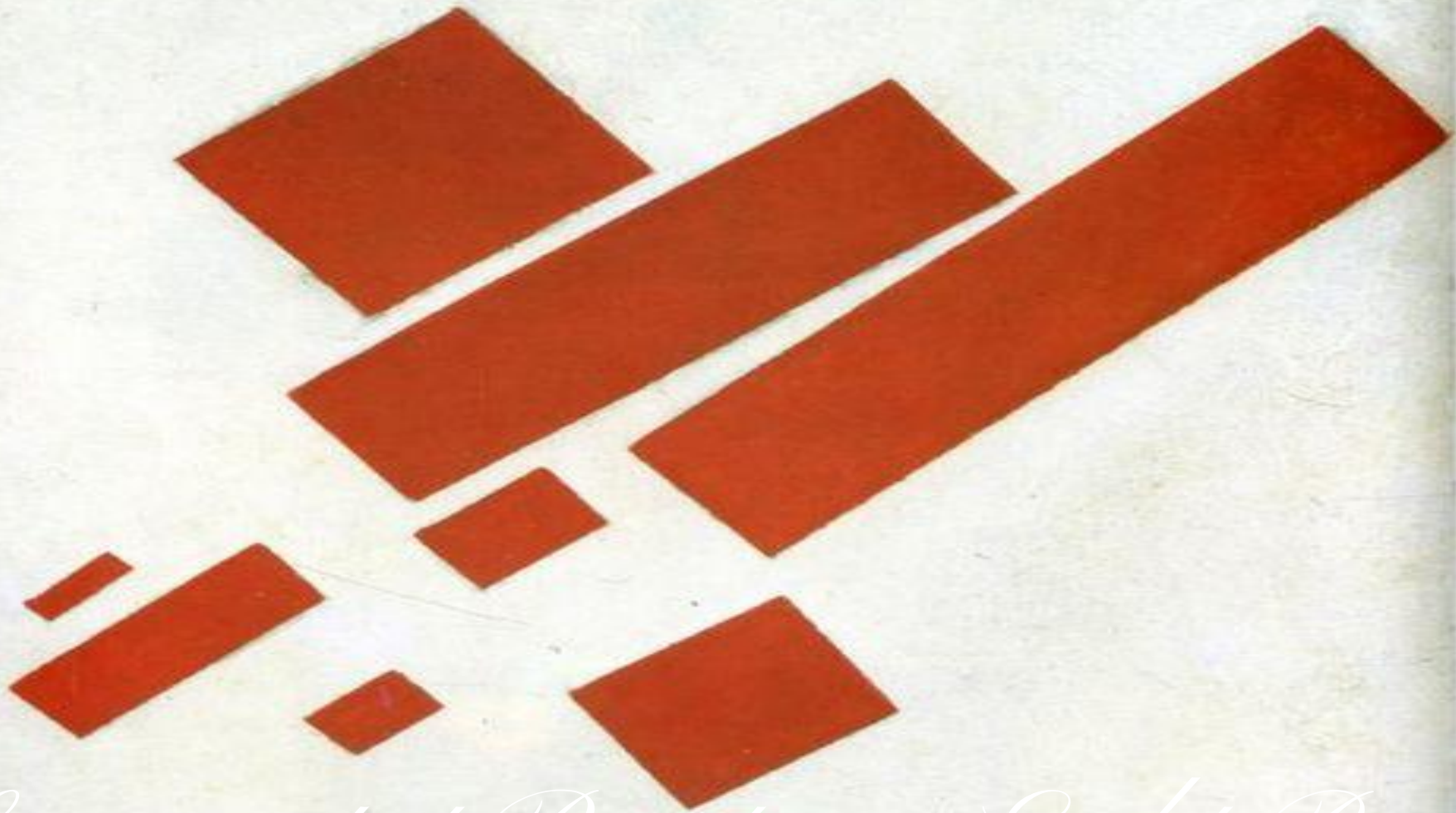


*Red Square: Painterly Realism  
of a Peasant Woman in Two*





*Suprematist*



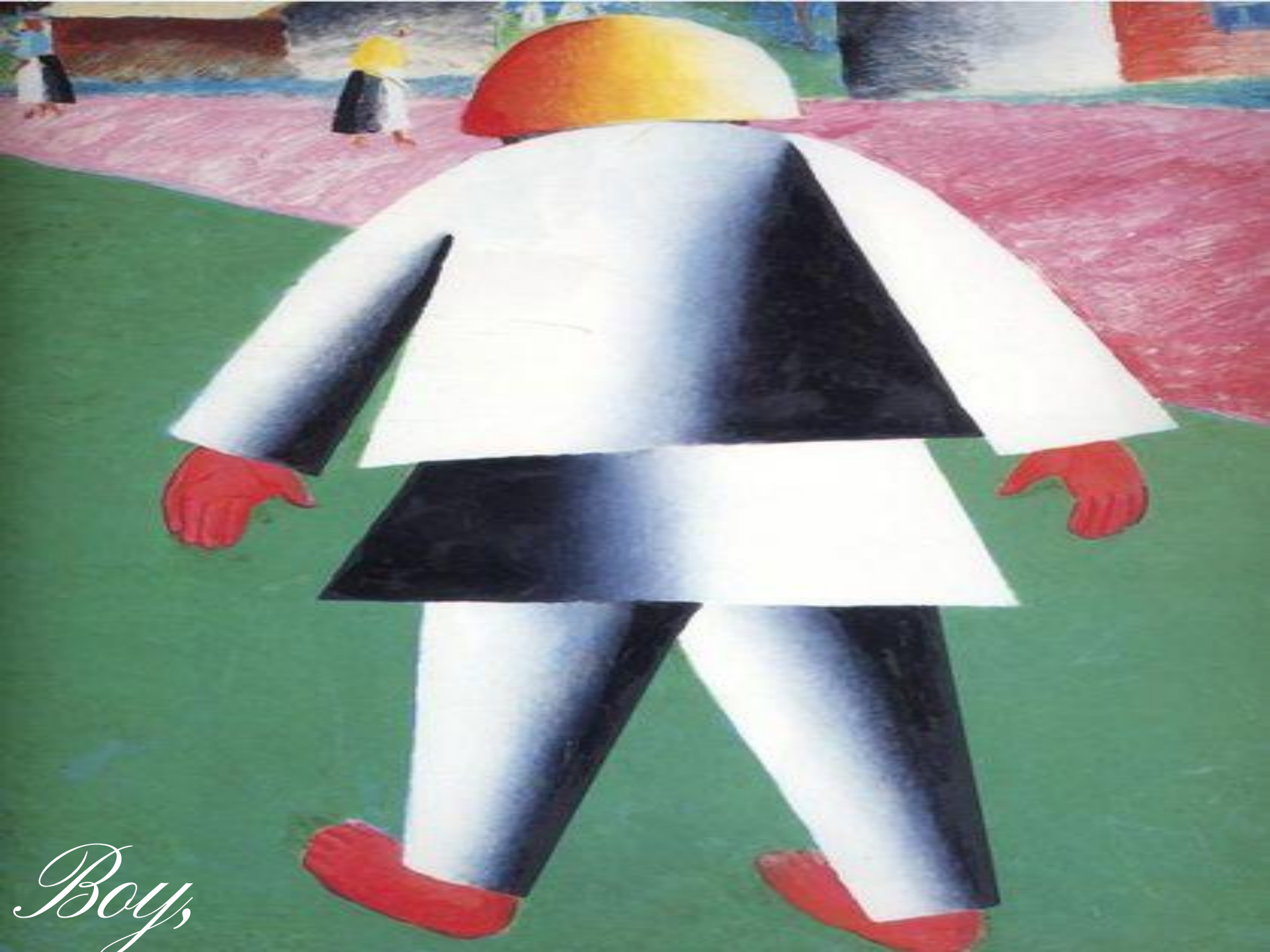
*Suprematist Painting: Eight Red  
Rectangles, 1915*



*Suprematism, Museum of*



*Suprematism,*



*Boy,*

*Red-cavalry,  
1928-1932*





*Summer Landscape,*



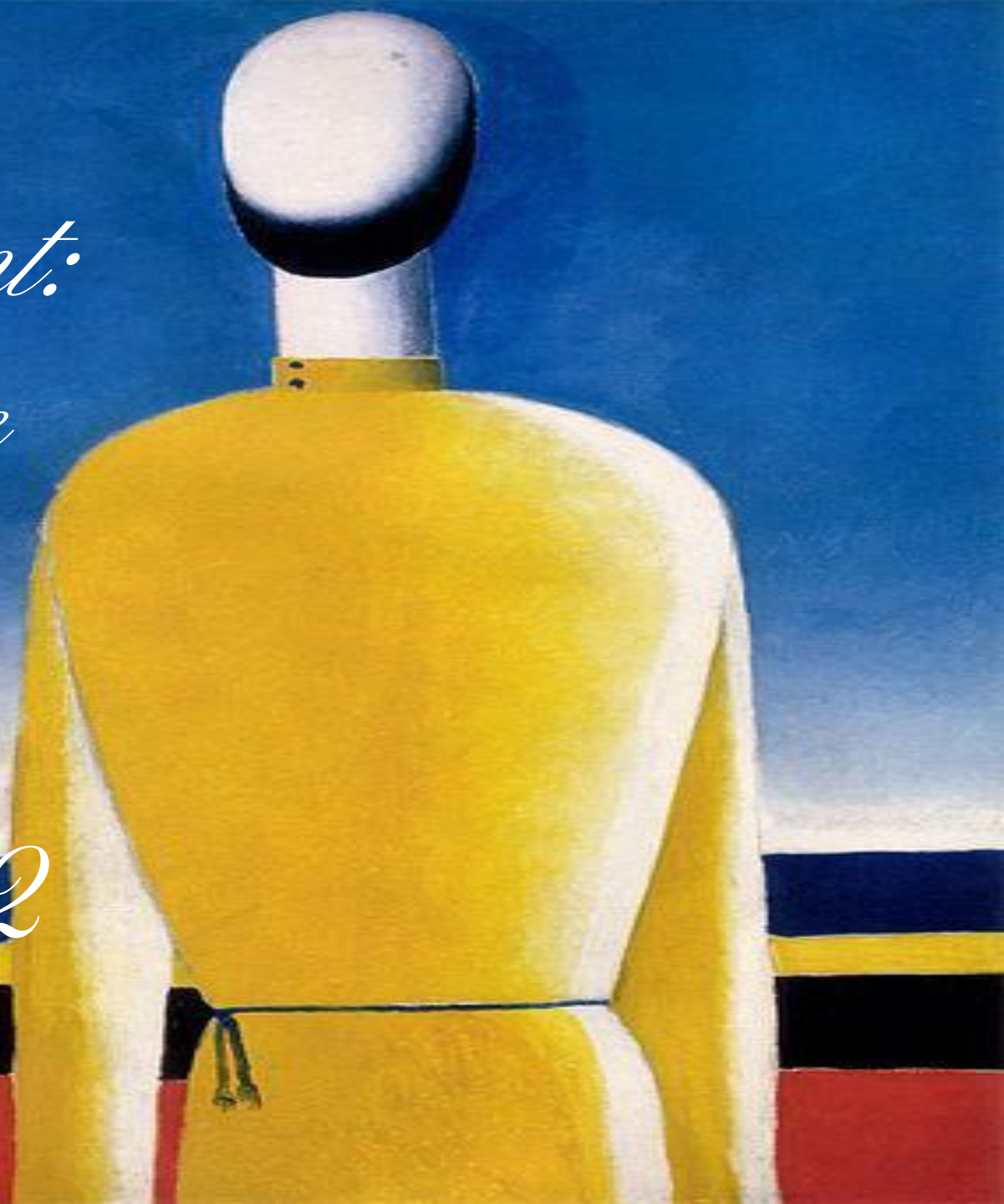
*Mower,*





*Mower,*

*Complex  
Presentiment:  
Half-Figure  
in a Yellow  
Shirt,  
1928-1932*





*Thank you for your  
attention*

*Skakalova Olexandra 11-a*

*Skakalova Olexandra  
1989*