

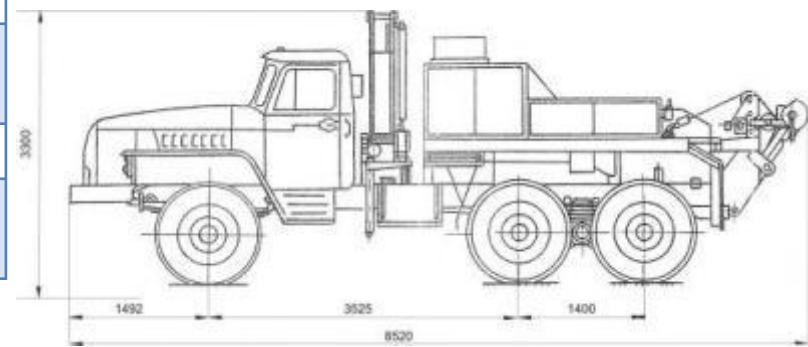
MTP-A2.1 RECOVERY TRUCKS ON URAL CHASSIS-CAB



Chassis-cab model	URAL 4320-31
Wheel arrangement	6x6
Curb weight, kg	12 980
Max. payload, kg	4 700
Gross vehicle weight, kg	17 800
Truck overall dimensions, mm	8 520 x 2 550 x 3 300
Engine:	YAMZ-238M2T diesel, V8, Euro 0
- rated power at 2,100 min⁻¹, kW (h p)	176 (240)
- max torque at 1,100-1,400 min⁻¹, Nm (kgf m)	883 (90)
Cab	conventional cab, three-seat
Maximum speed, km/h	80
Maximum upgrade angle, %	60
Fording height, m	1.2
Ground clearance, mm	400
Estimated fuel consumption at speed 60 km/h, l/100 km	36
Fuel tanks capacity, l	300
Tires, controllable-pressure	370-508 size (14.00-20), diagonal

MTP-A2.1 Recovery Truck is intended for:

- transportation of faulty trucks in a half-loaded position or towing by rigid double hook;
- setting overturned vehicles on their wheels, pulling-out of stuck trucks;
- rendering technical assistance in eliminating faults and damages.



Max. load on transport device 3 500 kg

Max. weight of towed truck, kg:

- half-loading 13 000 kg

- by towing 11 000 kg

Lifting equipment: hydraulic jacks (8t and 12t), catches for truck, hubs and wheels, mooring appliances

Wrecking equipment: rigid double towing hook, towing bar, towing ropes

Pull winch:

- max. traction effort of winch, when drawing out stuck trucks:

- without tackle block 10 - 11 tf

- with tackle block 20 tf

- working length of rope 60 m

Rigging equipment: hoops for connecting ropes, chains, device for fixing on the ground, tackle block.

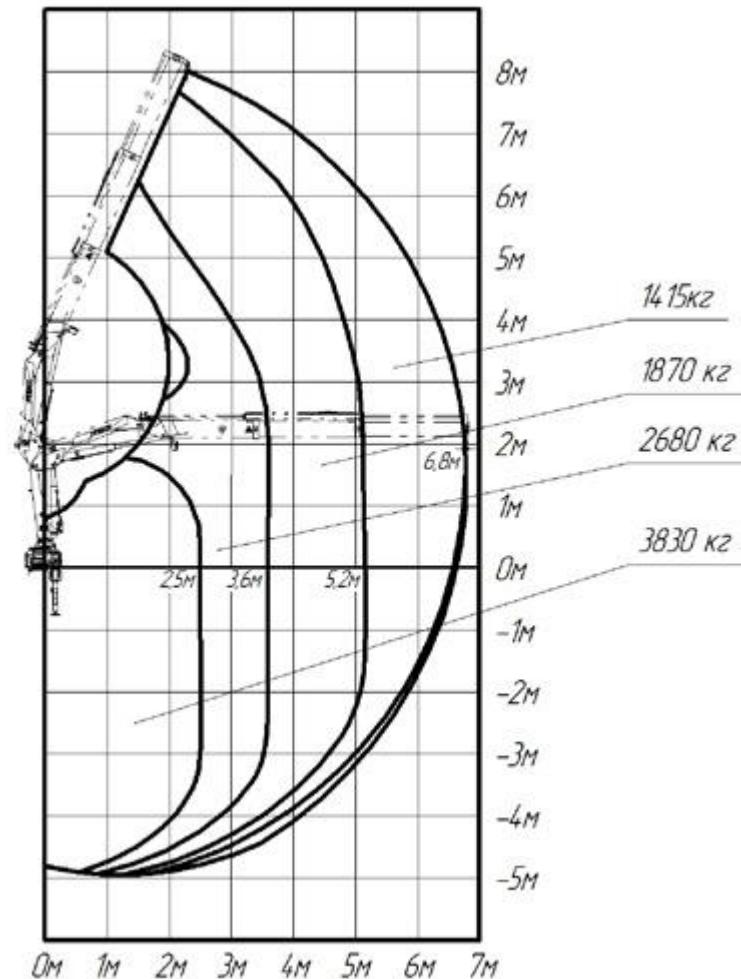
Tools: auto mechanic's tools, tools for repair and maintenance of electric equipment, for fuel and braking lines, soldering tools, tools and equipment for drilling, punching, cutting and fixing, special wrenches for maintenance and repair.

Auxiliary equipment: folding work bench, vice, tanks, spade, pinch bar, mat for work under the truck, fire extinguishers.



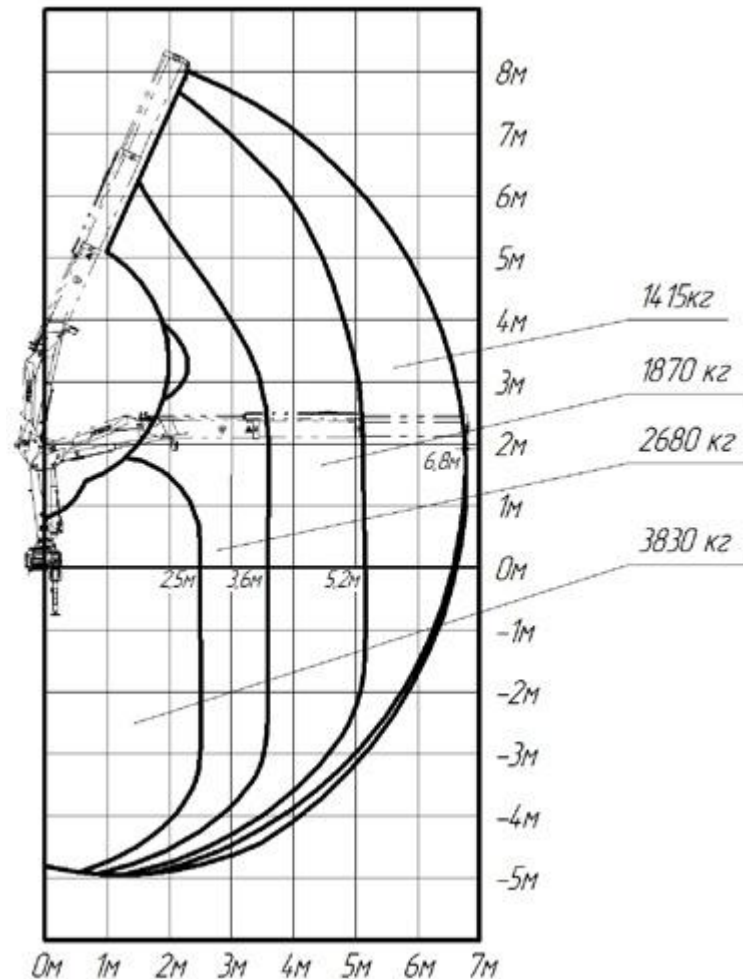
Crane manipulator

Model	INMAN IM 100			
Payload, kg	3 830	2 680	1 870	1 415
Boom length, m	2.5	3.6	5.2	6.8



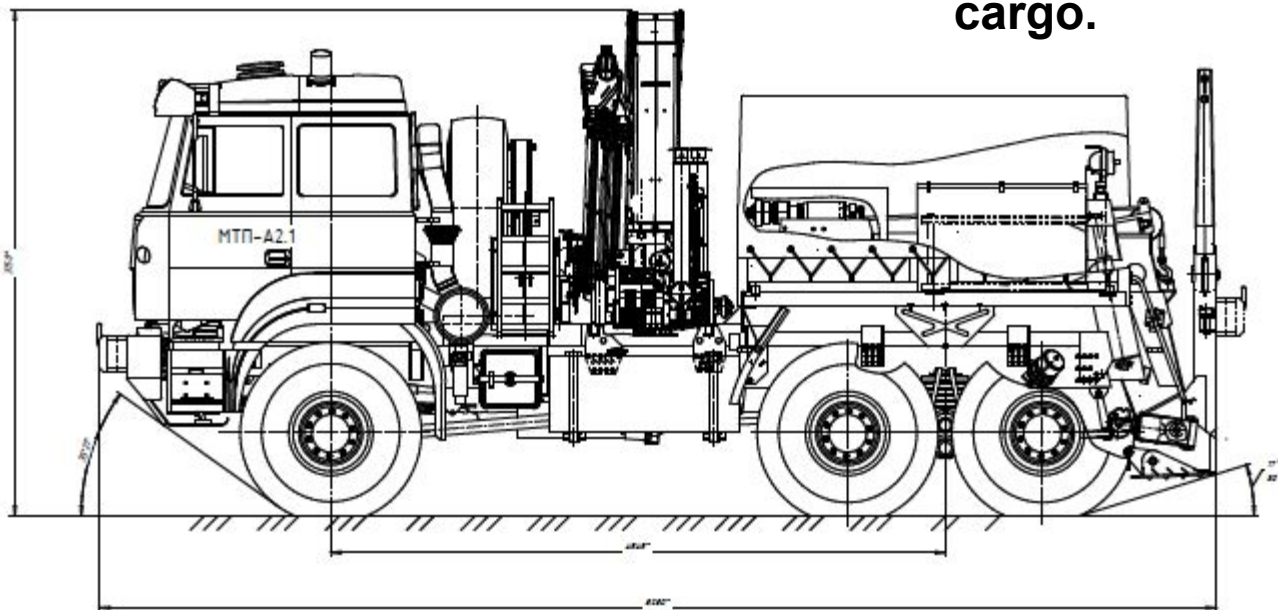
Crane manipulator

Model	INMAN IM 100			
Payload, kg	3 830	2 680	1 870	1 415
Boom length, m	2.5	3.6	5.2	6.8

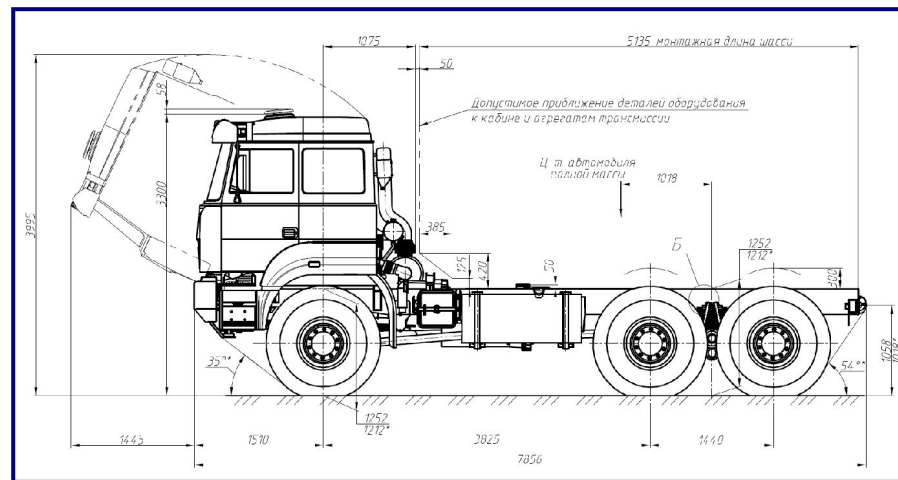




Wrecker is designed for support of convoy movement, recovery of damaged motor vehicles on all kinds of roads and terrain, rendering technical assistance, re-priming with fuel, lubricants and special fluids, loading and unloading of cargo.



Chassis-cab model	URAL 6370
Wheel arrangement	6x6
Curb weight, kg	18 600
Truck overall dimensions, mm	8,280 x 2,550 x 3,750
Engine:	YAMZ-652-01
- rated power at 2,100 min ⁻¹ , kW (hp)	303 (412)
- max torque at 1,100-1,400 min ⁻¹ , Nm (kgfm)	1870 (191)
Service brake system:	three-circuit, pneumatic with ABS. plastic pipelines
Cab	forward-control, two-seat
Maximum speed, km/h	80
Maximum upgrade angle, % (degree)	58 (30)
Ground clearance, mm	436
Estimated fuel consumption at speed 60 km/h, l/100 km	52,3
Fuel tanks capacity, l	500
Tires — radial-ply, controllable-pressure.	16.00 R20



Frame: side rail thickness 10 mm, roll stock is produced by  **RAUTARUUKKI** (Finland)

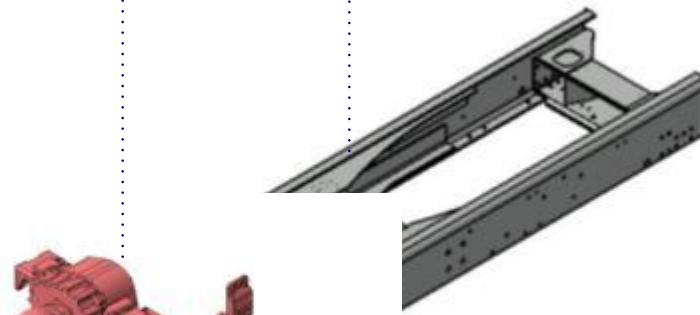
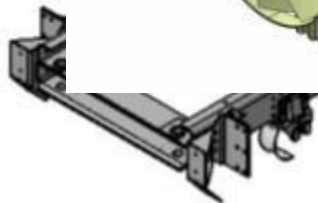
Transfer box:  **VG2000** - mechanical, two-stage, with cylinder locking inter-axle differential (Germany) .

Gearbox:  **16S2220TO** type - mechanical, 16-speed (Germany)

Brake system: three-circuit, pneumatic with ABS



Engine: YAMZ-650
By license Renault



Driving axles:

RABA – with separated final drive, with locking inter-wheel differentials, with axle load 13 t.



1. The direct pulling out of stuck or overturned vehicles with a rope or a winch.

Pull winch:

- max. traction effort of winch, when drawing out stuck trucks:
- without tackle block 10 - 11 tf
- with tackle block 19.5 tf
- working length of rope 60 m



2. The pulling out of stuck, wrecked or overturned vehicles in a half-loading position. Max efforts of pulling out – 10 ton.

3. The pulling out of stuck, wrecked or overturned vehicles by a lifting of rear or front parts of wrecked vehicle by crane.

Max efforts of pulling out – 6,5 ton.

4. The towing of wrecked vehicles with a rigid drawbar.

Max weight of towed object – 29,5 ton.



5. The half-load transportation of wrecked vehicle with hanging of rear or front part of it on a traverse beam with chains. Max. load on transport device - 4 ton. Max weight of wrecked vehicle – 16 ton.



6. The transportation of wrecked vehicle with fixing of front wheels in a basket of transportation device. Max weight of wrecked vehicle – 16 ton.



**7. The transportation of wrecked vehicle with fixing of front axle in a fork of transportation device. Max. load on transport device - 4 ton.
Max weight of wrecked vehicle – 16 ton.**

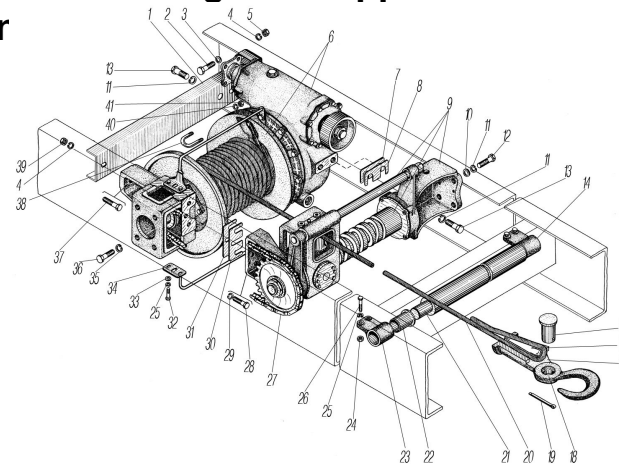


Stationary wrecker equipment:

Wrecker boom with winch towing device, transportation device for half-loading and support device for fixing of the truck during winch working. The lifting and the lowering cylinders.

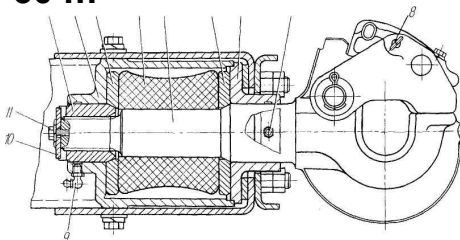
Pull winch:

- max. traction effort of winch, when drawing out stuck trucks:
- without tackle block 10 - 11 tf
- with tackle block 20 tf
- working length of rope 60 m



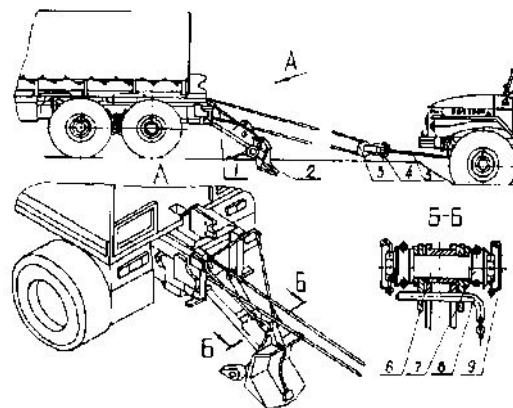
Towing device

Towing device hook on rotary beam



Support device

device for fixing on the ground during unditching of stuck truck with max towing efforts 20 ton and during crane work.



Transportation device for half-loading

provides evacuation of vehicles on roads, in half-loading position

- Height of front wheels during transportation - 200 mm from the ground surface
- Turning radius of train - 12 m



- lifting and lowering of cargo and aggregates of the repaired vehicles up to 6.9 ton
- assistance during unditching of stuck and tipped over vehicles, partial lifting front or rear parts of damaged vehicle
- load and unload of cargo from other truck: 5.2 - 6.5 ton

- Diesel generator
- Equipment for charging of batteries
- Repair and maintenance equipment and tools
- Electrical tools
- Welding equipment
- Special spanners and wrench for preparing of transportation
- Withdrawal tools
- Bench work tools
- Electrically measuring instrument
- Lubrication and refuelling equipment

