

# Driving Safety Solutions

DSM+ADAS+MDVR+Platform/App Real  
Time Monitoring

Make driving safer ♥



# Our complete solution includes:

01

**Driver State Monitor (DSM)**

02

**Advanced Driving Assistance System (ADAS)**

03

**Mobile Digital Video Recorder (MDVR)**

04

**Driving Vision Assistant System (Side Views)**

05

**Platform and Mobile Phone Remote Real-time Monitoring**

# Why do you need this solution?



1. Effective management of correct driving habits  
(Successfully help avoid 90% accident due to fatigue driving)
2. Effective traffic hazard warning. Avoiding accidents
3. Preservation of Driving Image Evidence  
(Including local storage and cloud/platform storage)
4. Avoid blind area accidents  
(Countries have successively legislated for the compulsory installation of legislation in Taiwan since 2018/1/1)
5. Effective management to reduce fleet operating costs

# Scheme analysis (customizable according to requirements):

DSM+ADAS+ Omnidirectional video surveillance + multi-channel MDVR video terminal + platform / mobile phone surveillance



# Driver Driving State Monitoring System

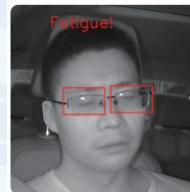
## DSM:



Based on image recognition technology, the driver's condition can be monitored, and the driver's fatigue state, distracted driving, dangerous driving behavior, identity recognition and other bad driving behavior can be effectively monitored. At the same time, the driver's behavior data can be uploaded with peripheral wireless transmission equipment. The driver status can be monitored in real time through network management platform or personal mobile terminal, which is suitable for the safety management of private cars, dangerous goods transport vehicles, passenger vehicles and freight vehicles.



Fatigue driving alarm



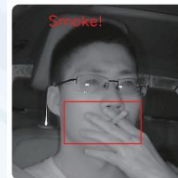
Fatigue warning

Distracted driving alarm



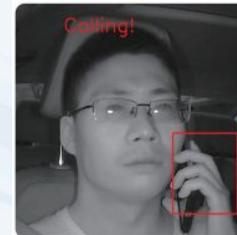
Distraction warning

Driver smoking alarm



Smoking warning

Driver calling alarm



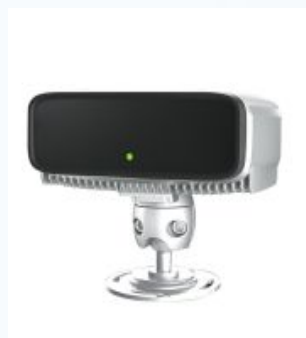
Calling warning

Driver ID recognition



Driver ID recognition

# 司机驾驶状态监测系统DSM:



## Accident occurrence time axis

Early warning and reminder 1.5 seconds in advance

Fatigue driving accident reduced by 90%.

| Smoking Calling Yawning Closing Eyes

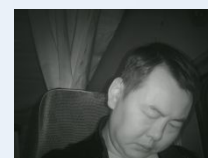
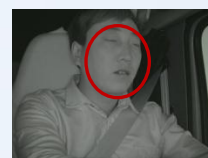
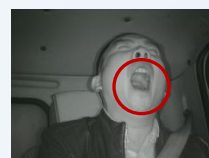
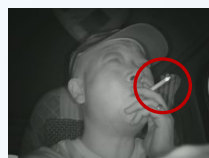
Early Warning

| Abnormal posture

| Abnormal posture, left-looking and right-looking

| Driver Identity Recognition

| Information Scheduling



Bad habits: smoking , calling

Yawning and distraction

Fatigue Limit -  
Close your eyes

Long-term bad driving habits

30 mins

0-5s



Chaotic Lane Change,  
Overspeed



Keep up with the front  
car.  
The accident happened  
immediately.



Accident:  
Obtain evidence

# Advanced Driving Assistance System ADAS:



Special ADAS Advanced Driving Assistance System has the functions of front vehicle collision warning, lane deviation and pedestrian detection. It senses the surrounding environment at any time during the driving process, collects data, identifies, detects and tracks static and dynamic objects, and carries out systematic calculation and analysis combined with the map data of navigator, so as to make the driver aware of the possibility in advance. Danger, effectively increase the comfort and safety of car driving.



**Lane Departure Warning (LDW)**



Lane departure warning (LDW)



**Pedestrian Collision Warning (PCW)**



Pedestrian collision warning(PCW)



**Forward Collision Warning (FCW)**



ADAS camera



Forward collision warning(FCW)



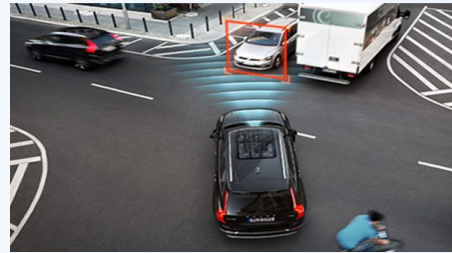


# Advanced Driving Assistance System ADAS:

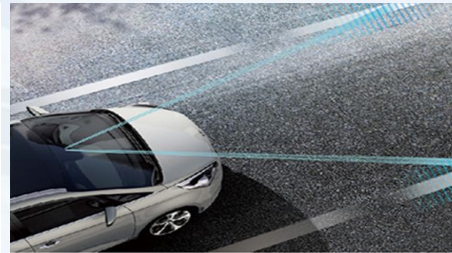
- | Front Collision Warning (FCW)
- | Lane Departure Warning (LDW)
- | Pedestrian Detection and Early Warning (PCW)
- | Front Vehicle Approach Warning (FPW)
- | Safe Distance Alarm (SDA)
- | Front Car Start Alarm (FVSA)
- | High Definition Driving Video (720P)
- | Acceleration
- | Accelerated deceleration
- | High turn



前方碰撞预警



车道偏离



前方行人碰撞警告



FCW Front Car Collision Warning System: It judges the potential collision risk by sensing and calculating the distance between the vehicle and the front car in the course of driving, and gives an

immediate warning. LDW lane departure warning (Lane Departure Warning) monitors the position of the vehicle in the lane by ADAS algorithm, and warns the driver when the vehicle is pressing or is about to press the line, so as to prevent traffic accidents caused by Lane departure.

PCW Pedestrian Collision Early Warning System: Based on computer vision image algorithm, static and dynamic pedestrians on the driving lane are detected, and early warning is made to prevent the occurrence of pedestrian collision accidents.

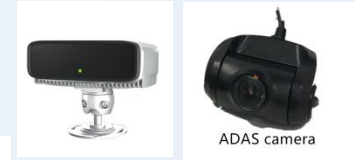


# Multi-channel MDVR is optional :

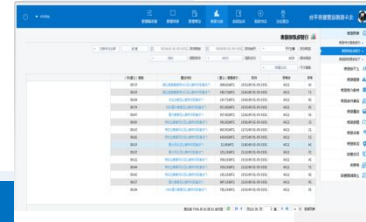


2 CH: TS-MV03

DSM+ADAS+MDVR+Platform/App



ADAS camera



4 CH: TS-MV02-T

DSM+ADAS+2ch cameras +MDVR+ Platform/App



6 CH:

DSM+5 cameras + MDVR + Platform/App

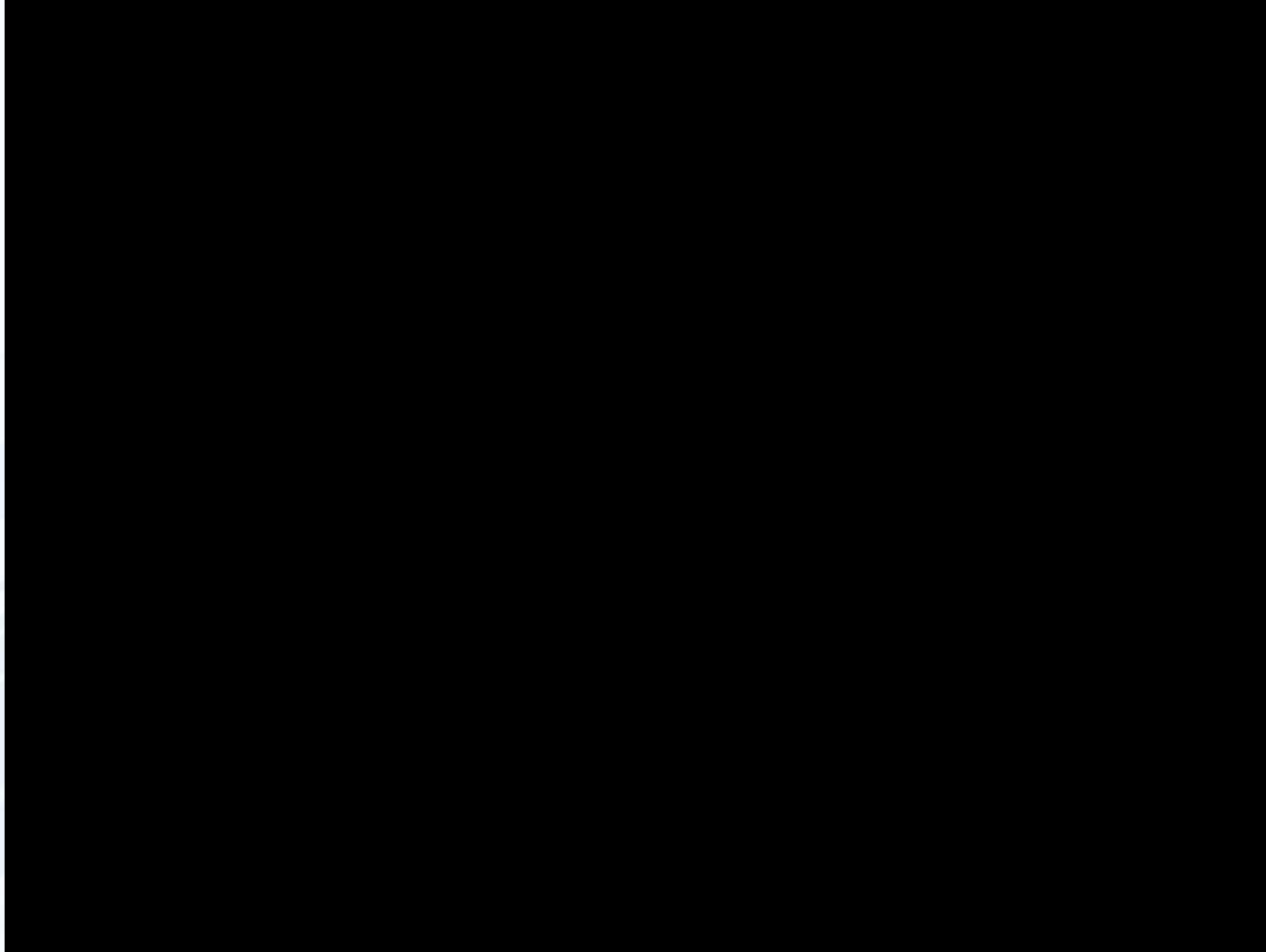


8 CH:

DSM+7 cameras+ MDVR+ Platform/App



# Driving Vision Assistant System (Side Views):



## Driving Vision Assistant System (Side Views)

Vehicle side safety image assistant system: It can be constructed on the original multi-channel vehicle video recorder.

Advantages: It can be installed separately, not necessarily linked with the car-mounted video.

Accidents can be avoided due to misjudgment caused by congenital dead-angle blind area of the car body.



As long as it is a vehicle, both large and small vehicles have the original rearview mirror and side-view mirror congenital blind area, and large vehicles have the existence of "dead-in-transit difference". Moreover, when turning, the vehicle is driving strictly (urban speed 60 km/h = 16.6 meters per second displacement, Expressway change lane, speed 100 km/h = 28.8 meters per second displacement). At present, even when driving with directional lights and looking at the rearview mirror and both sides of the mirror, it is still impossible to detect the presence of vehicles or people in the blind area of the dead corner of the line of sight.

# Platform/Mobile Real-time Monitoring :



WiFi Auto  
Download



TTS Voice  
Information  
Delivery



Interface  
customization



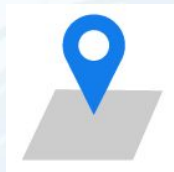
School Bus  
Card Swipe



Oil statistics



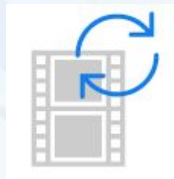
3G/4G  
Video  
surveillance



GPS  
Location



Track query



Remote Video  
Playback



Linkage  
alarm



Image capture

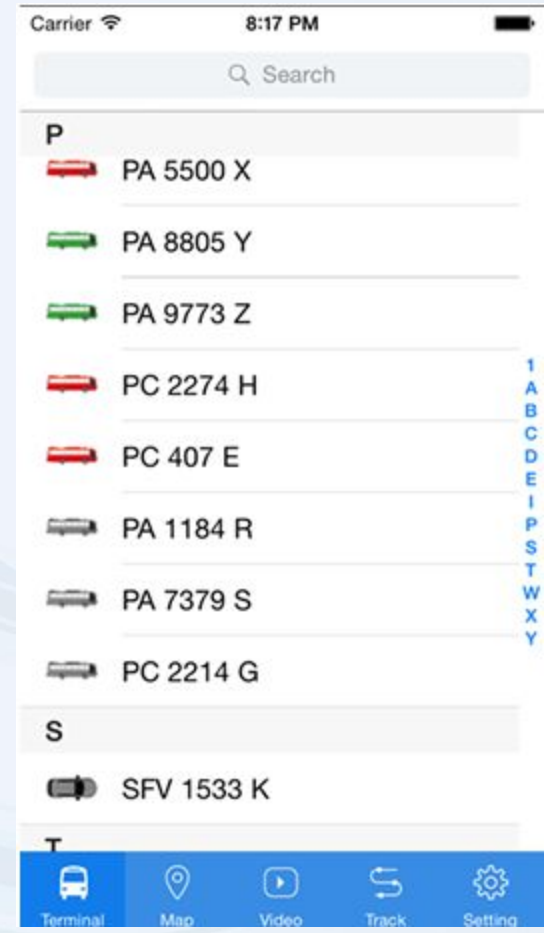
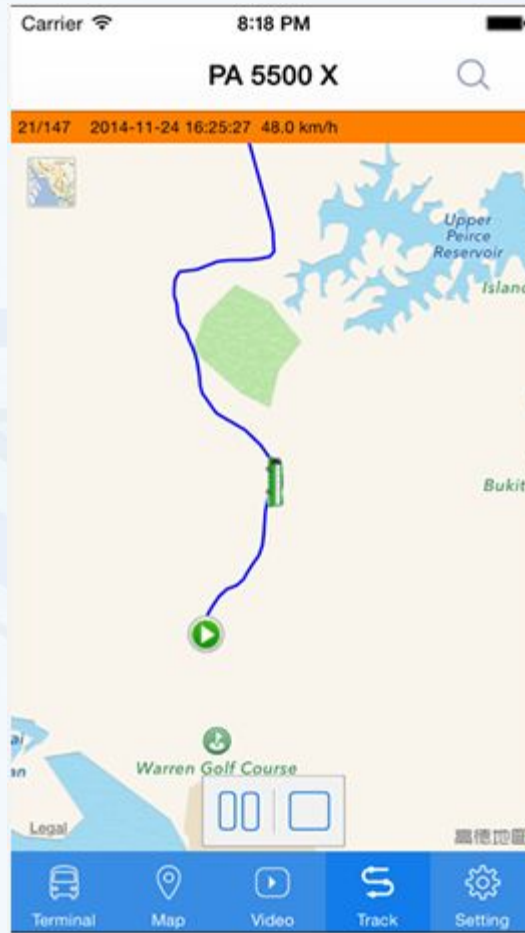
# Examples of Platform Real-time Monitoring :

<http://121.199.53.118:8080/808gps/login.html>

username: cs, password: 000000



# Examples of Real-time Monitoring on Mobile Phone :



# International Inspection Certificate & Intellectual Property Protection - Multinational Invention Patent Protection :

## Certifications



Certificates: CE, FCC, RoHS

Invention Patent Protection:

US9,807,351

Invention# I 405682

Patent for

invention#ZL201010280427.3

# THANK YOU

Contact: Sharky Chan

Company: Shenzhen Tensor Technology Co., Ltd

Mail/Skype: [sharky@tensortec.net](mailto:sharky@tensortec.net)

Phone/WeChat: +86 18320318694