

Терция

Сочиняем песенки

Терция – б.3, м.3.

A musical staff with a large black 'C' clef on the left. The staff contains six intervals, each marked with a label below it. The intervals are: 1. б.3 (minor third), 2. м.3 (major third), 3. м.3 (major third), 4. б.3 (minor third), 5. б.3 (minor third), 6. м.3 (major third). The notes are represented by circles on the staff lines.

A musical staff with a large black 'C' clef on the left. The staff contains one interval, marked with the label 'м.3' (major third) below it. The notes are represented by circles on the staff lines.

A musical staff with a large black 'C' on the left. The staff contains eight measures of music. Each measure has a note on the bottom line. The notes are: C4, D4, E4, F4, G4, A4, B4, and C5. Below the staff are interval labels: б.3, M.3, M.3, б.3, б.3, M.3, and M.3.

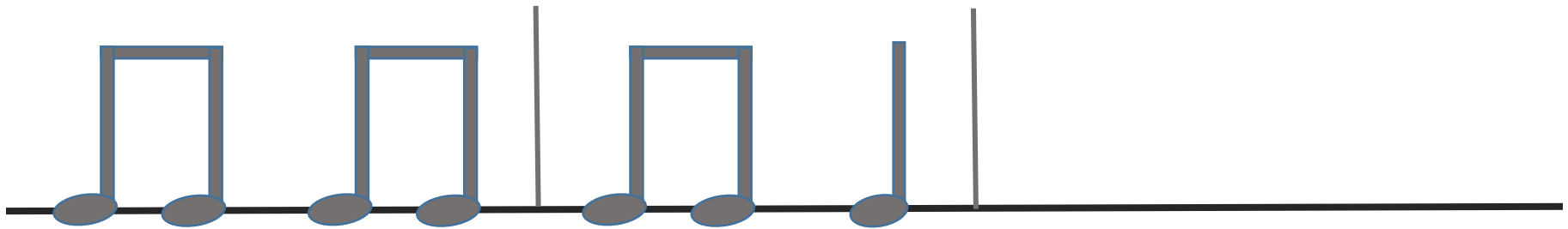
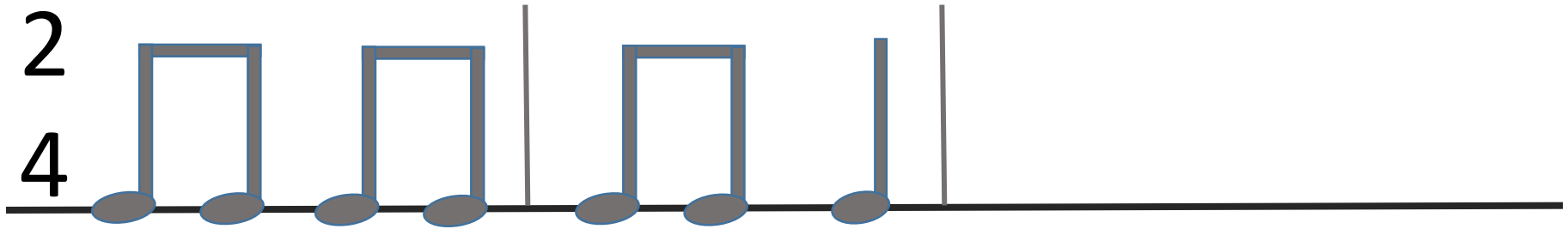
Measure	Note	Interval Label
1	C4	б.3
2	D4	M.3
3	E4	M.3
4	F4	б.3
5	G4	б.3
6	A4	M.3
7	B4	M.3
8	C5	M.3

A musical staff with a large black 'C' on the left. The staff contains eight measures of music. Each measure has a note on the bottom line. The notes are: C4, D4, E4, F4, G4, A4, B4, and C5. There are accidentals: a sharp (#) above the notes in measures 2, 3, 6, and 7; and a flat (b) below the notes in measures 4 and 5. Below the staff are interval labels: M.3, б.3, б.3, M.3, M.3, б.3, and б.3.

Measure	Note	Interval Label
1	C4	M.3
2	D4	б.3
3	E4	б.3
4	F4	M.3
5	G4	M.3
6	A4	б.3
7	B4	б.3
8	C5	б.3

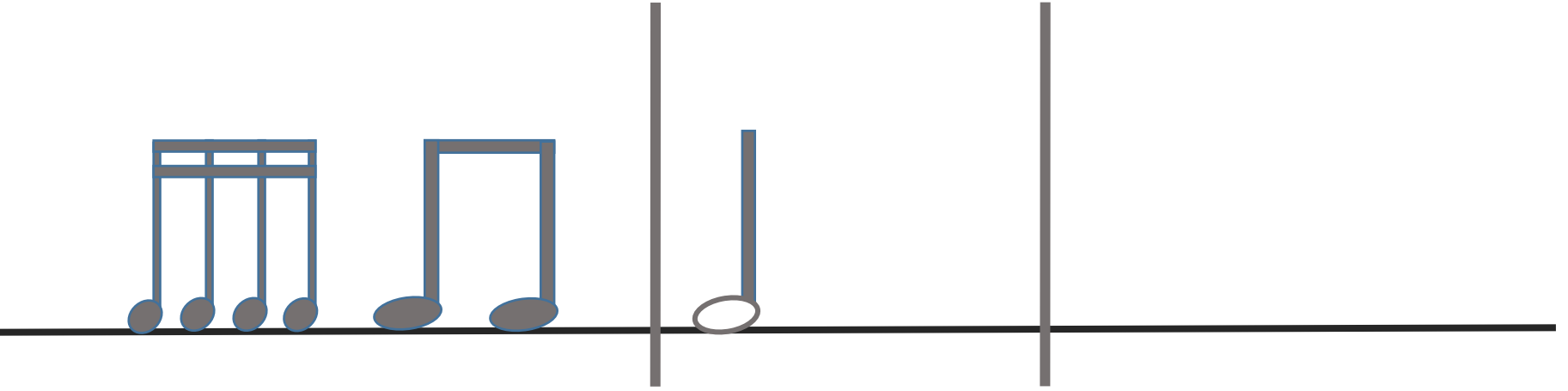
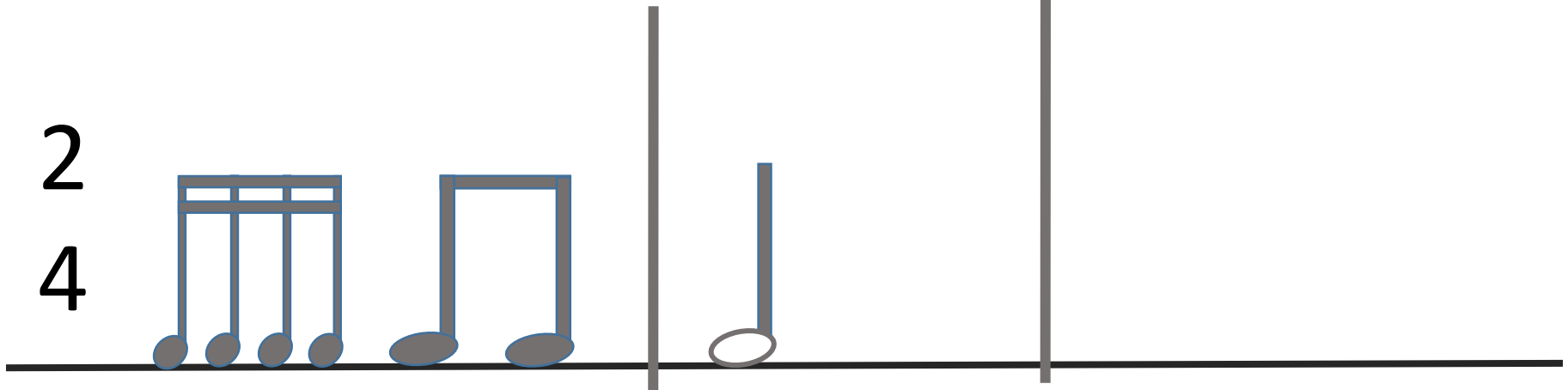
Гриб весёлый мухомор
всем известен с давних
пор





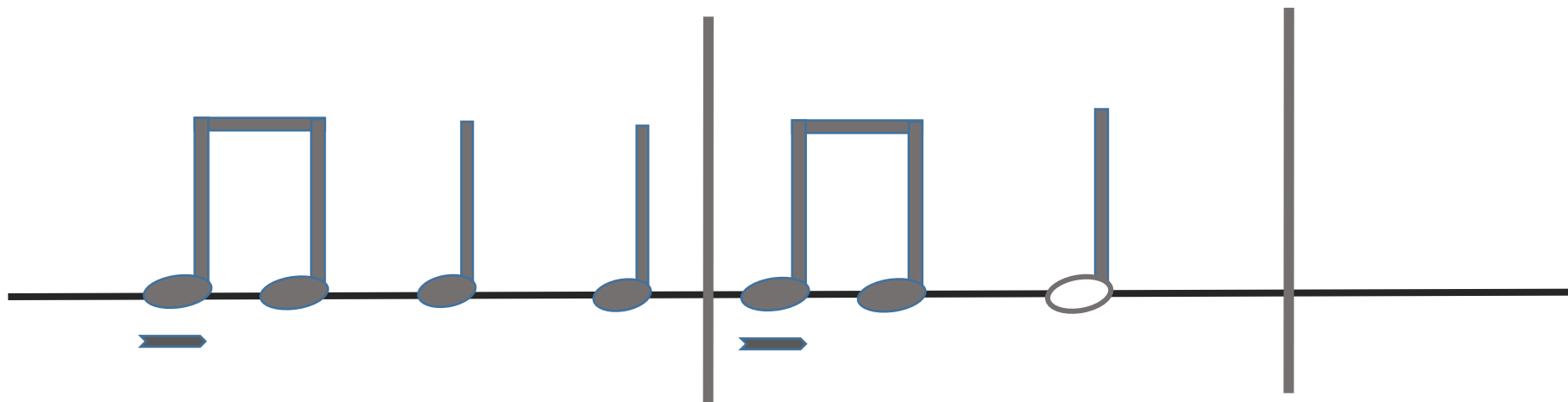
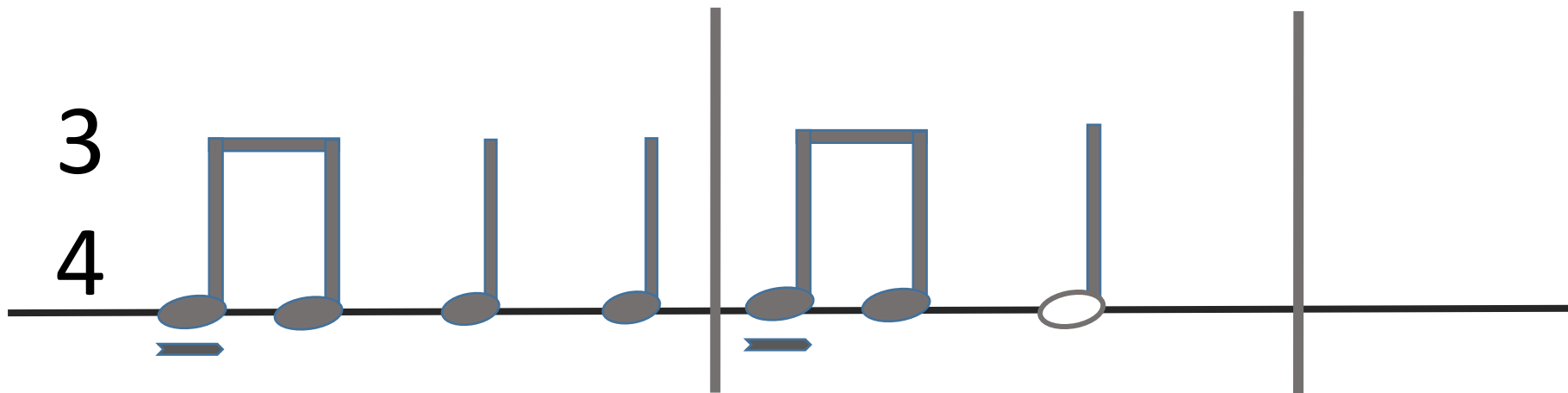
2

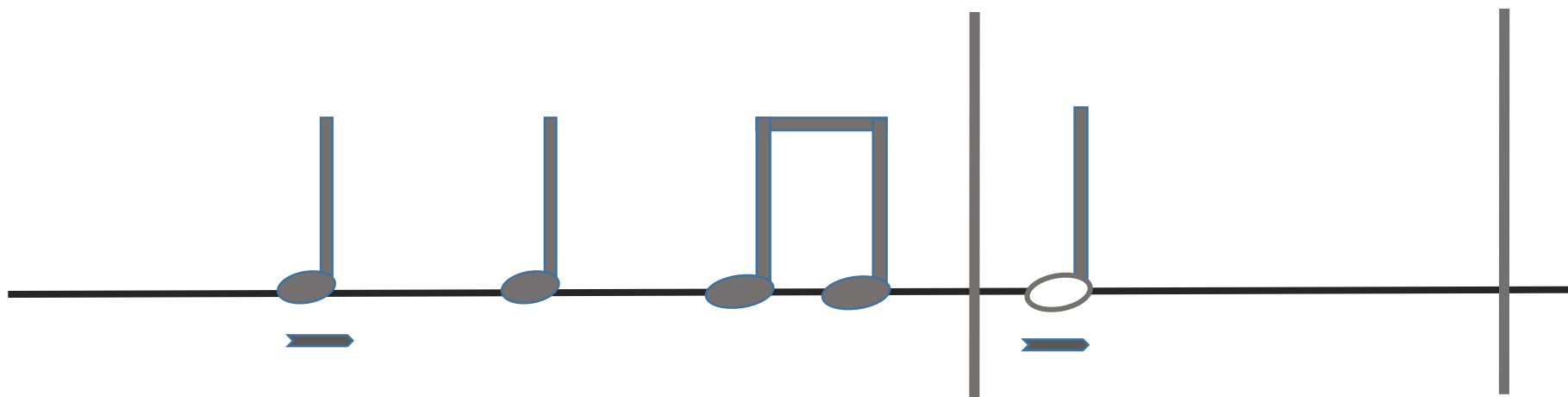
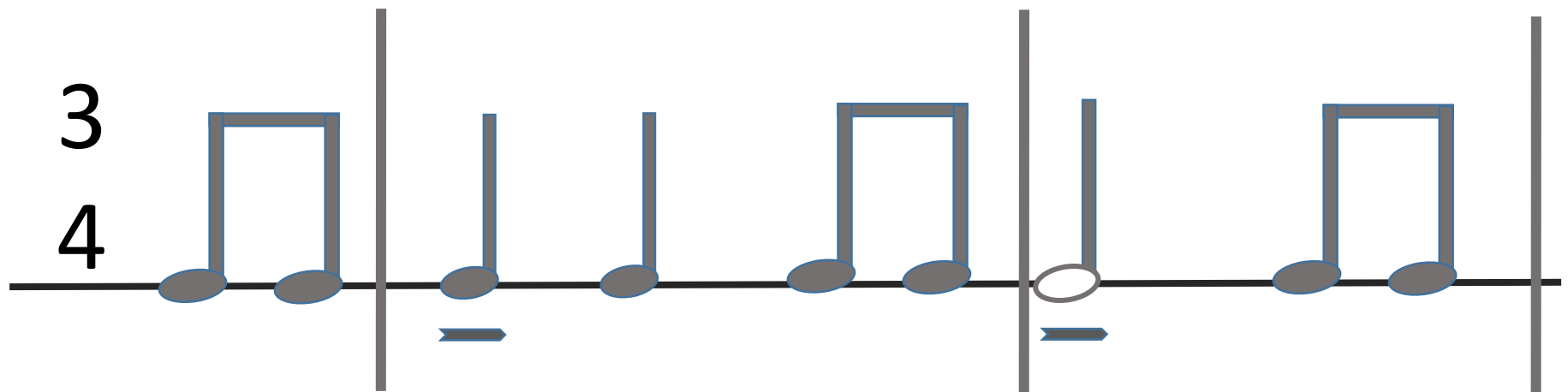
4



3

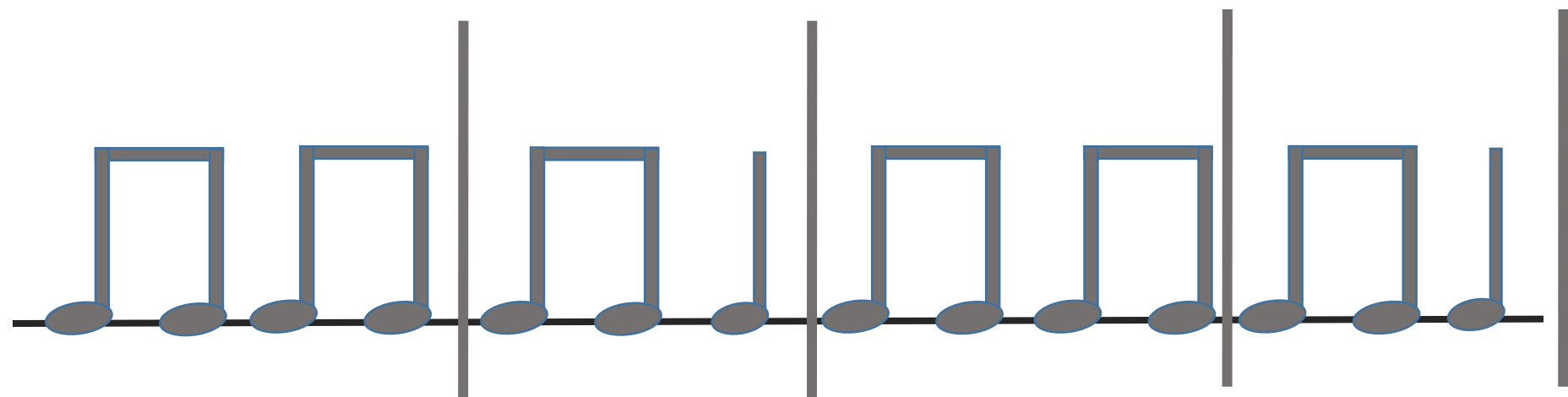
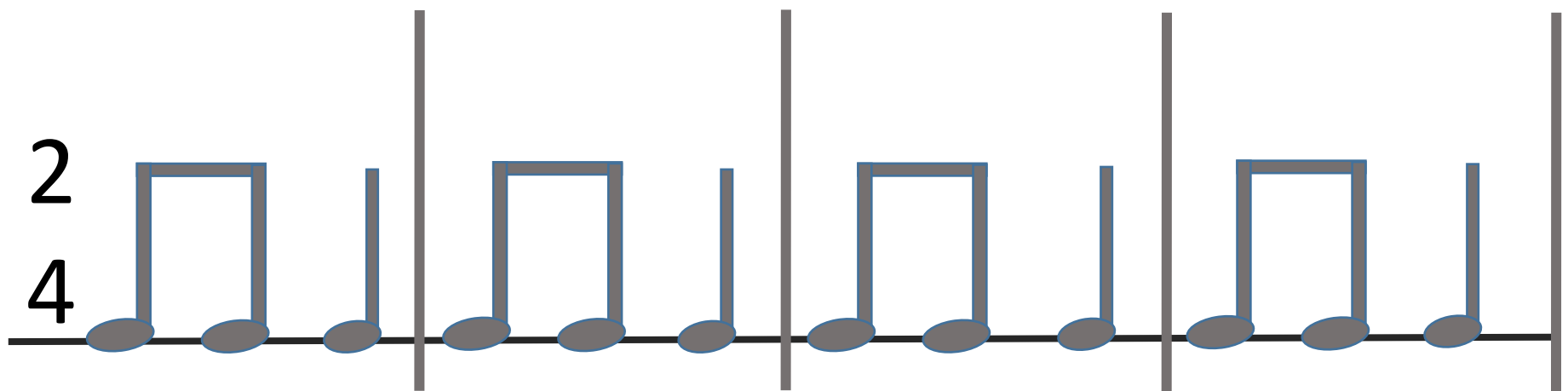
4



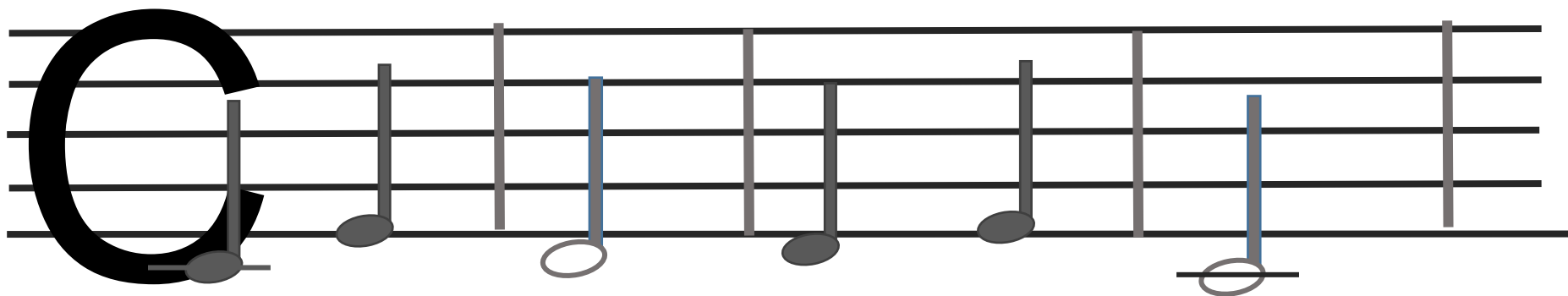
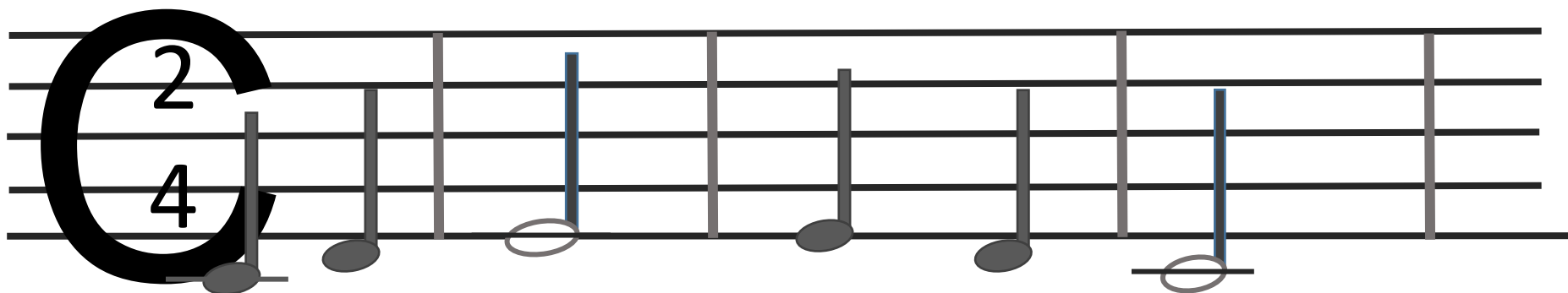


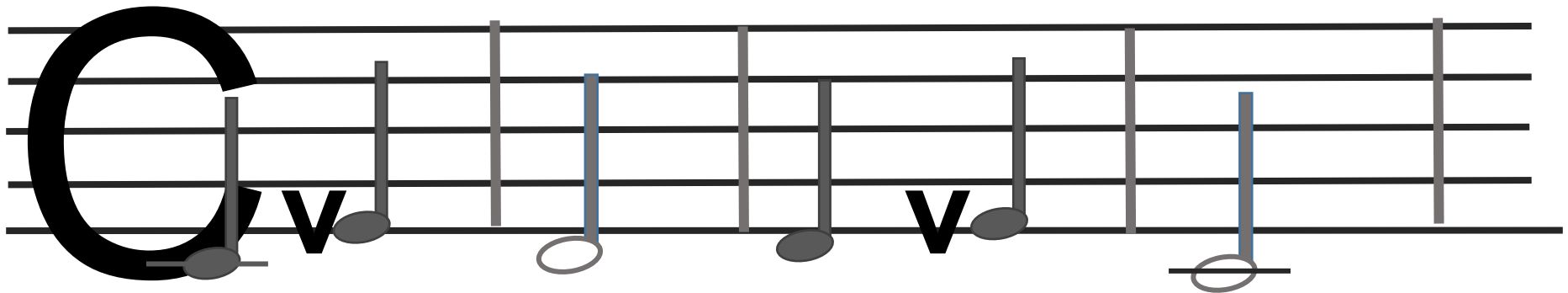
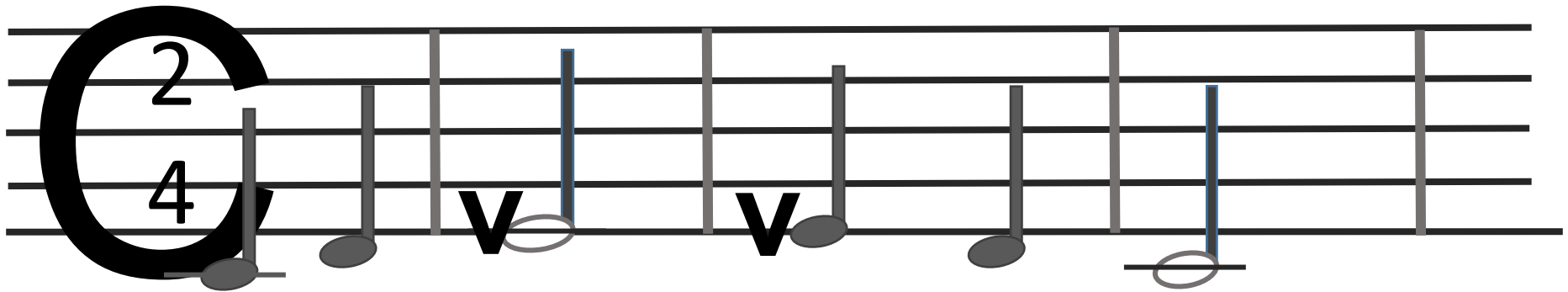
Баю-бай, баю-бай,
Ты, собачка, не лай.
Белолапа, не скули,
Нашу Катю не буди





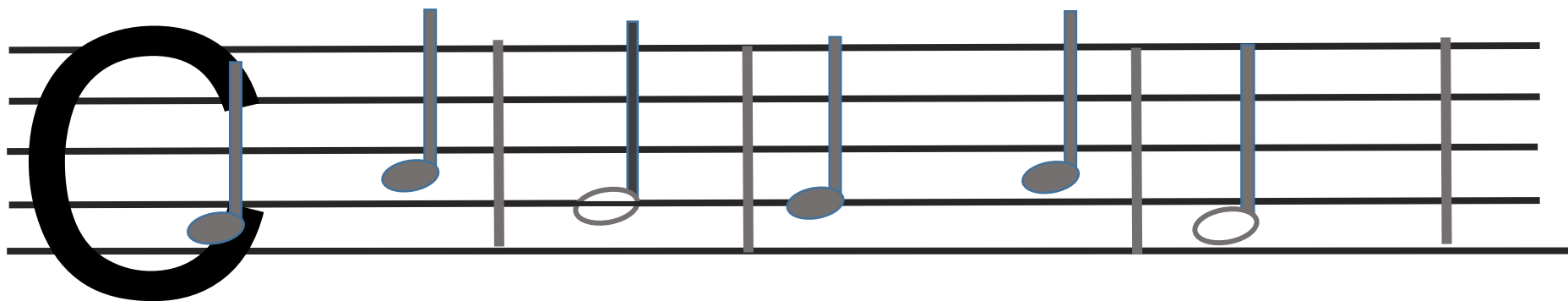
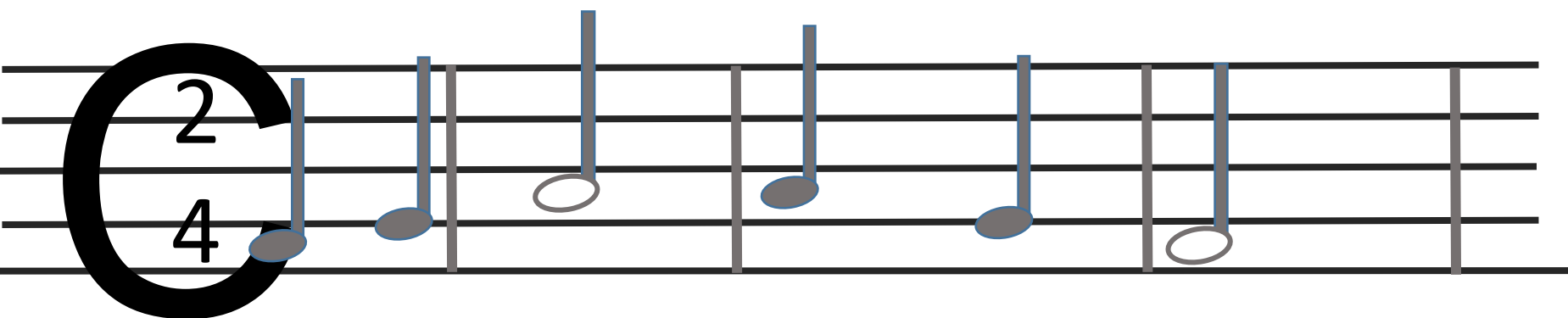
Пёс Барбос весь оброс,
только нос без волос.

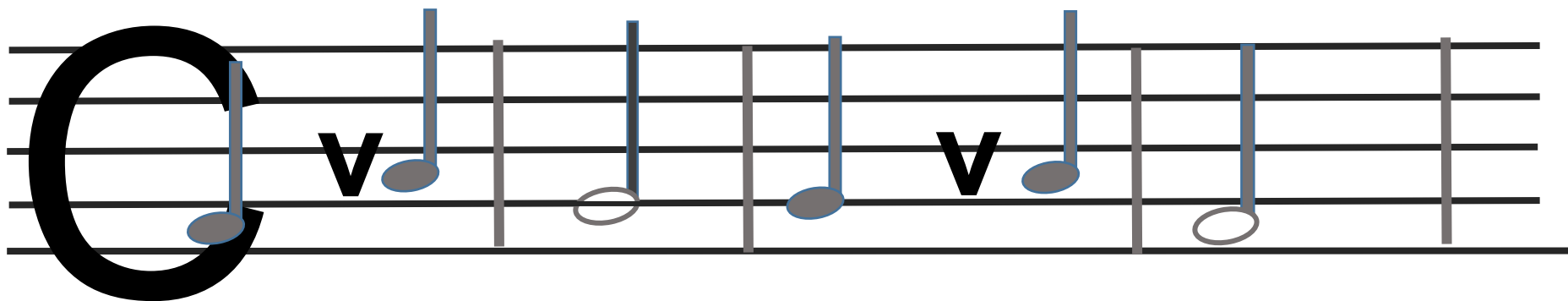
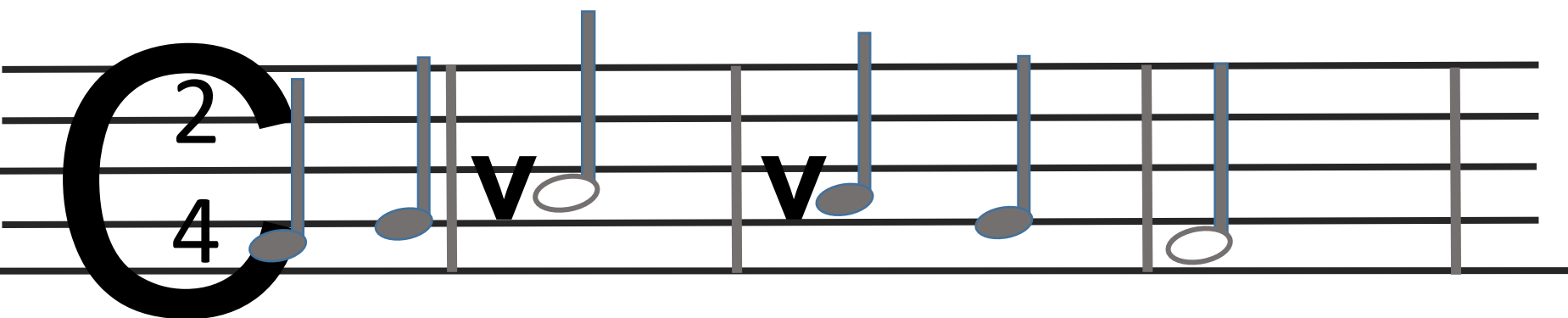




A musical staff with five lines. A large black 'C' is on the left, containing the numbers '2' and '4'. The staff contains a sequence of notes: a quarter note on the first line, a quarter note on the second line, a sharp sign on the third line, a quarter note on the third line, a sharp sign on the fourth line, a quarter note on the fourth line, a quarter note on the fifth line, and a half note on the first line. Vertical bar lines separate the measures.

A musical staff with five lines. A large black 'C' is on the left. The staff contains a sequence of notes: a quarter note on the first line, a sharp sign on the second line, a quarter note on the second line, a half note on the first line, a quarter note on the second line, a sharp sign on the third line, a quarter note on the third line, and a half note on the first line. Vertical bar lines separate the measures.





2
4#

A musical staff with five lines. A large black 'C' is on the left, with a '2' inside its top curve and a '4#' on the first line. The staff contains eight notes: a quarter note on the first line (filled), a quarter note on the second line (filled), a half note on the second space (open), a quarter note on the third line (filled), a quarter note on the third space (filled), a half note on the third space (open), a quarter note on the fourth line (filled), and a quarter note on the fourth space (open). There are sharp symbols (#) on the first, second, third, fourth, and fifth lines.

A musical staff with five lines. A large black 'C' is on the left. The staff contains eight notes: a quarter note on the first line (filled), a quarter note on the second line (filled), a half note on the second space (open), a quarter note on the third line (filled), a quarter note on the third space (filled), a half note on the third space (open), a quarter note on the fourth line (filled), and a quarter note on the fourth space (open). There are sharp symbols (#) on the first, second, third, fourth, and fifth lines.

2
4

A musical staff with five lines. A large black 'C' is on the left, with a '2' above it and a '4' below it. The staff contains a sequence of notes: a quarter note on the first line (C), a sharp sign (#) on the first space (D), a quarter note on the second space (E), a sharp sign (#) on the second line (F), a half note on the second line (F), a sharp sign (#) on the second space (D), a quarter note on the first space (D), a sharp sign (#) on the first line (C), a quarter note on the first line (C), and a half note on the first line (C). Vertical bar lines separate the measures.

A musical staff with five lines. A large black 'C' is on the left. The staff contains a sequence of notes: a quarter note on the first line (C), a sharp sign (#) on the first space (D), a quarter note on the second space (E), a sharp sign (#) on the second line (F), a half note on the second line (F), a sharp sign (#) on the second space (D), a quarter note on the first space (D), a sharp sign (#) on the first line (C), a quarter note on the first line (C), and a half note on the first line (C). Vertical bar lines separate the measures.

A musical staff with a C-clef (soprano clef) and a 2/4 time signature. The notes are: quarter note (G4), quarter note (A4), half note (B4), quarter note (C5), quarter note (B4), quarter note (A4), and half note (G4). A 'v' (accent) is placed above the final G4 note.

A musical staff with a C-clef (soprano clef). The notes are: quarter note (G4), quarter note (A4), half note (B4), quarter note (C5), quarter note (B4), quarter note (A4), and half note (G4). A 'v' (accent) is placed above the final G4 note.