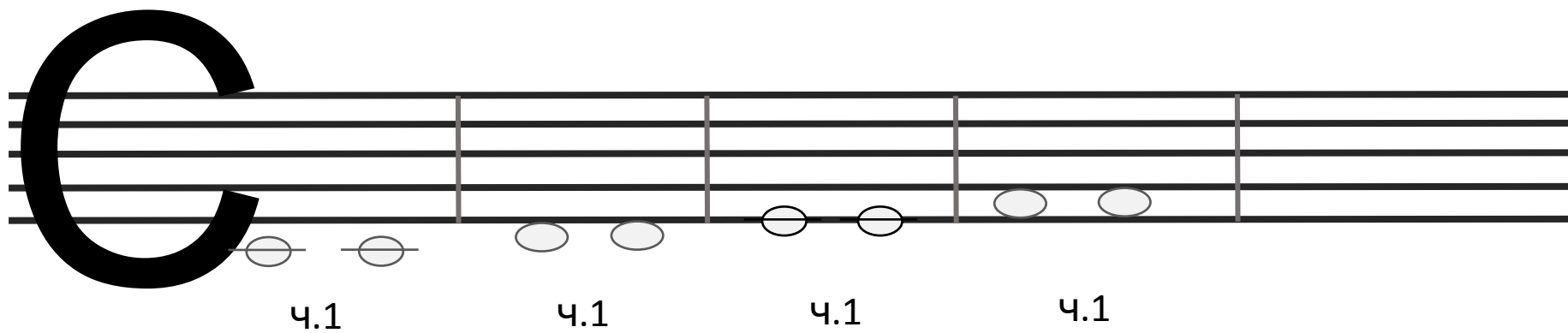


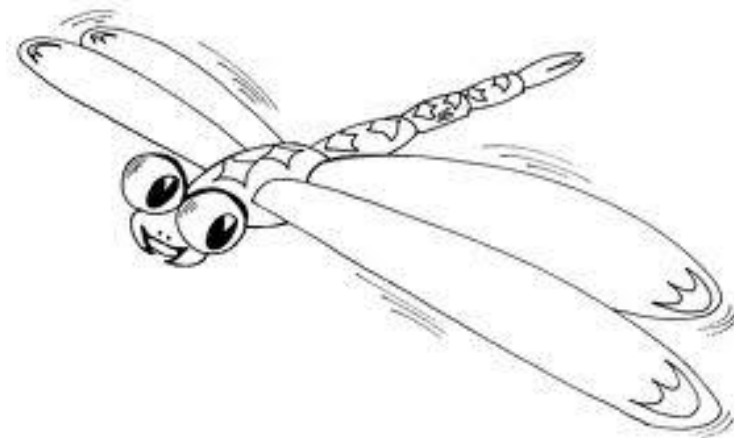
Примы, секунды.

Резникова Е. Ю.
ДШИ им М. А. Балакиерва
2015

Прима – ч. 1.

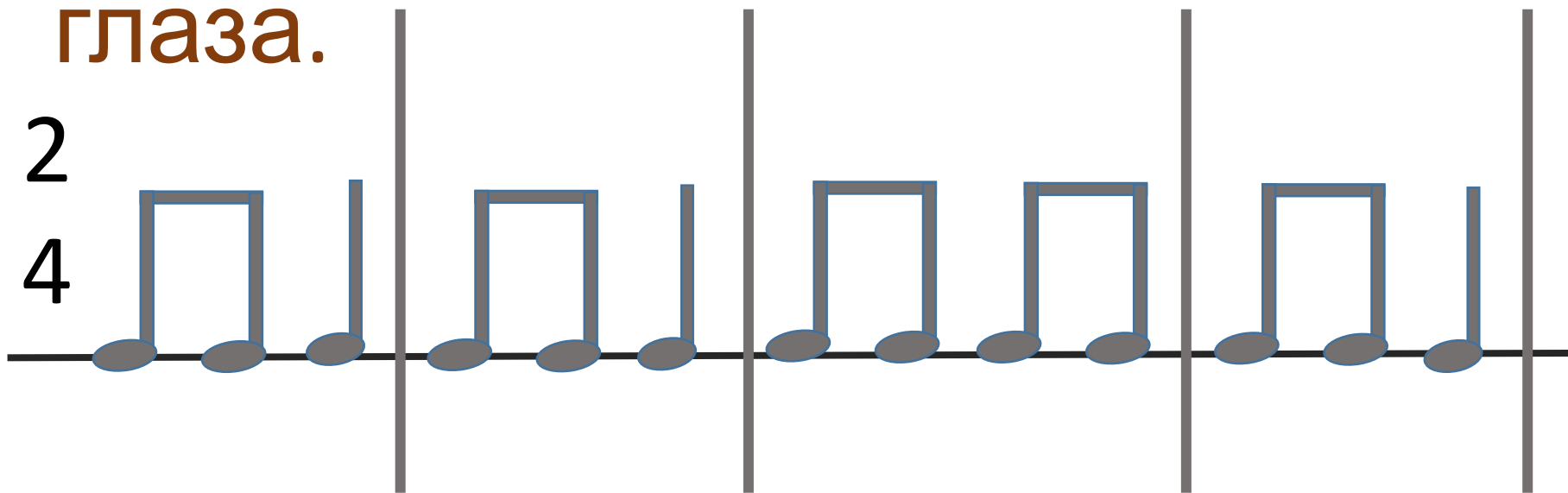
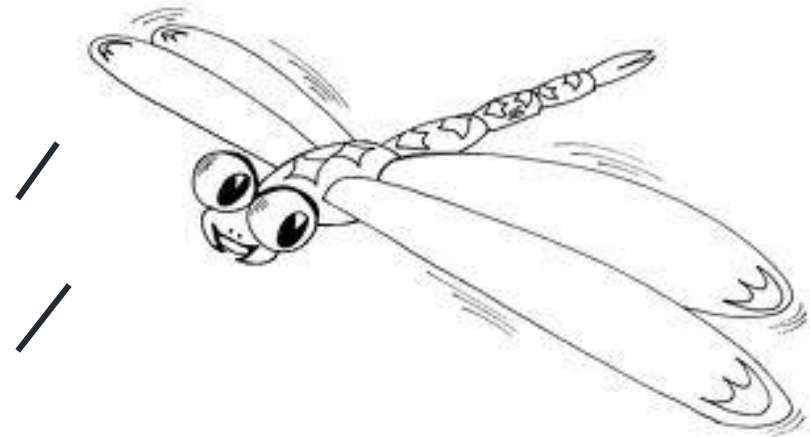


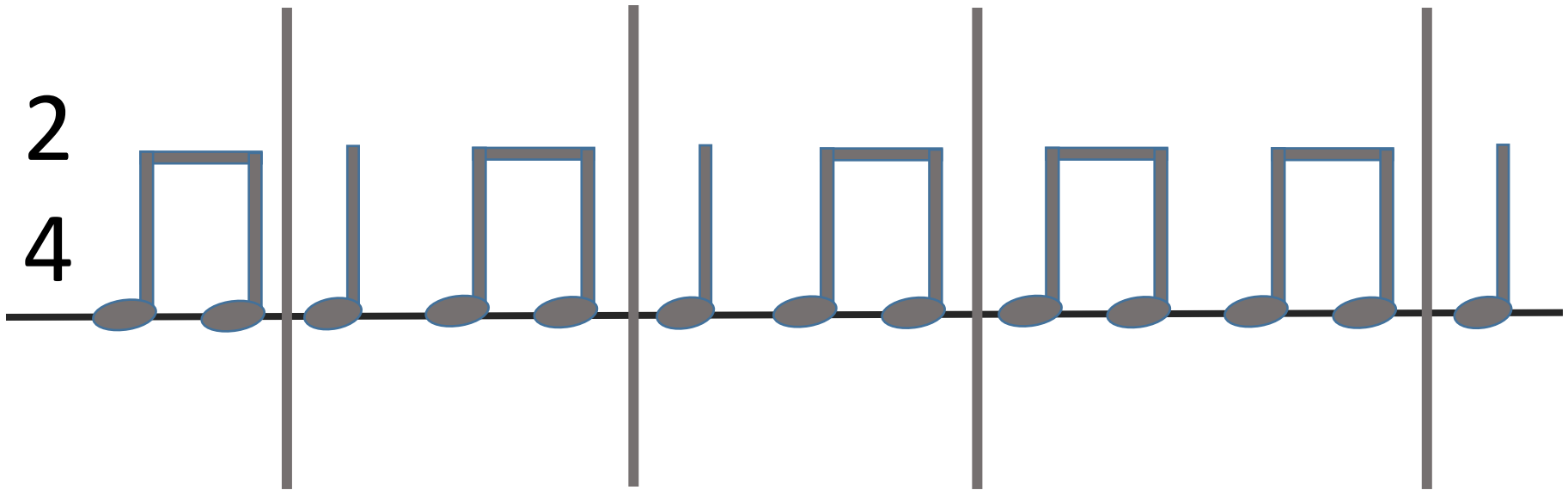
Стрекоза, стрекоза, Любопытные глаза.

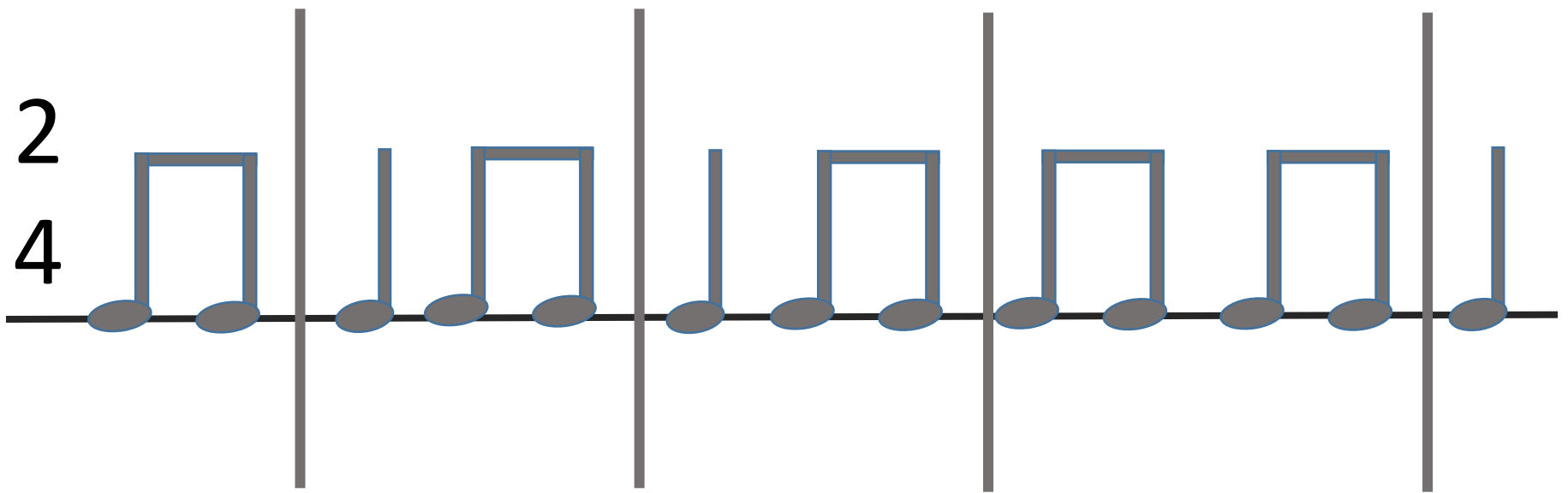


Рабочая тетрадь:
страница 32, задачка №
56

Стрекоза,
стрекоза,
Любопытные
глаза.



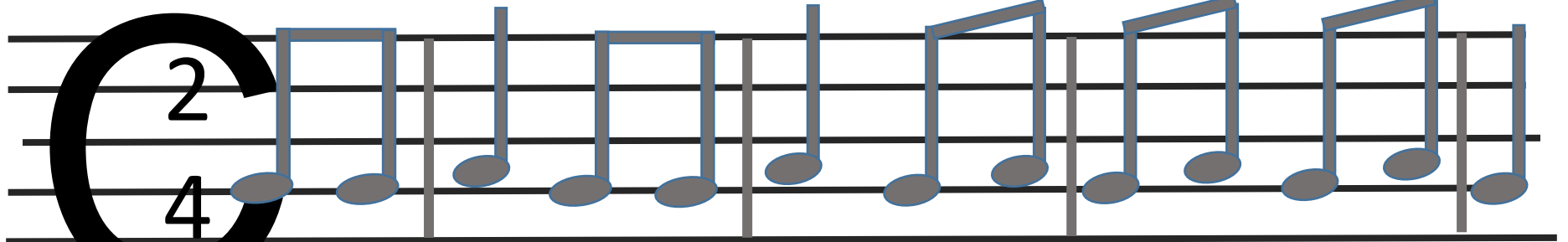
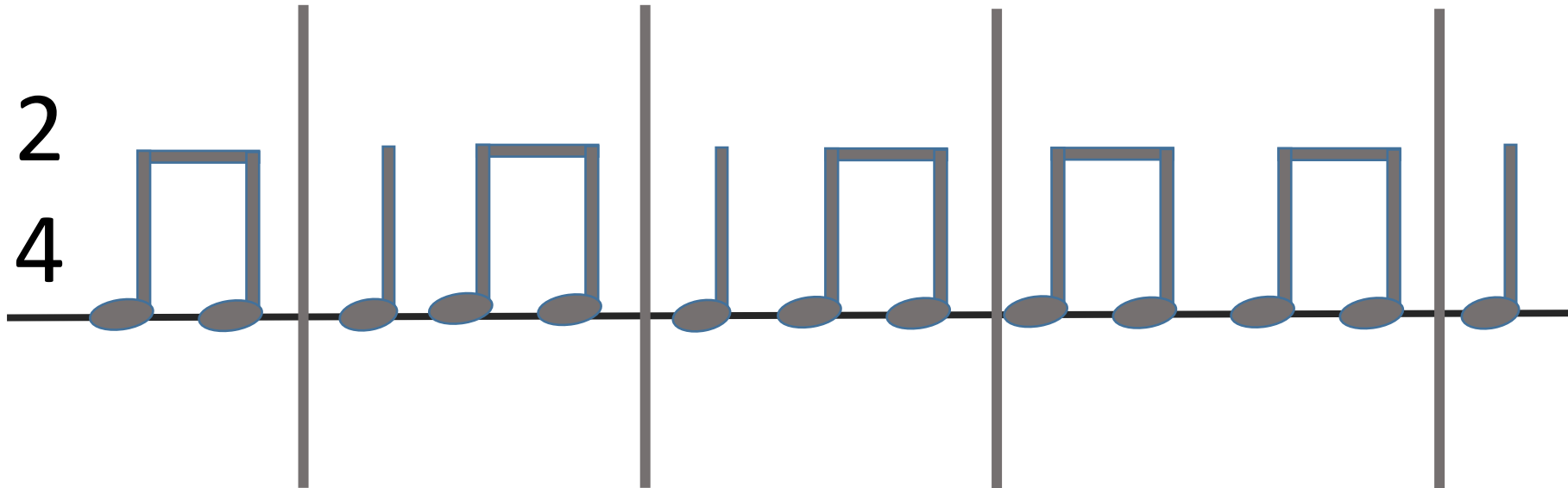




Рабочая тетрадь:
страница 32, задачка №
56

2

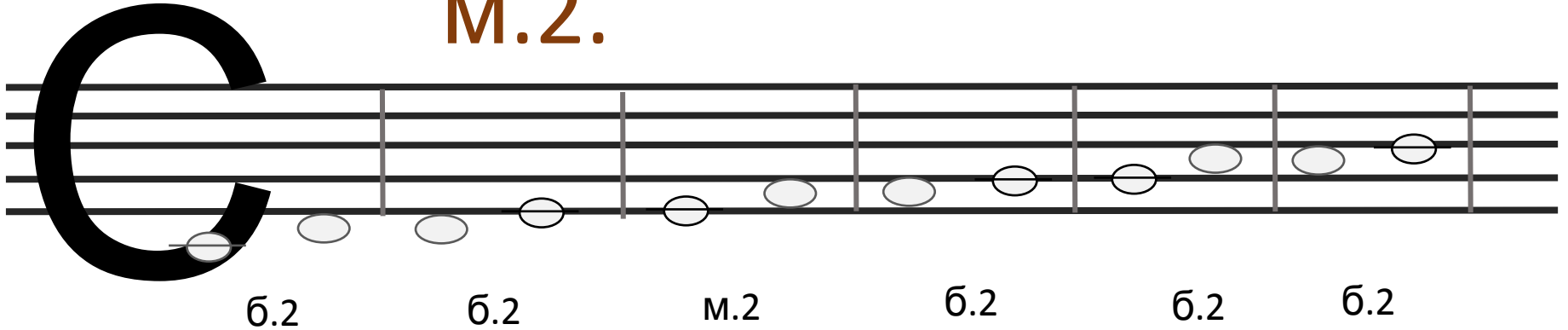
4



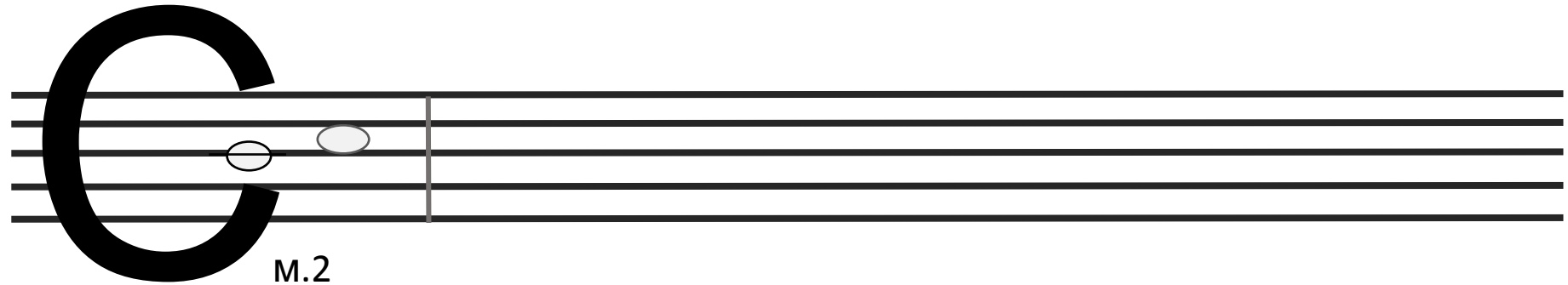
4.1

4.1

Секунда – б.2, м.2.



A musical staff with a large black 'C' clef on the left. The staff contains six measures of music, each separated by a vertical bar line. The notes are as follows: Measure 1: one note on the first line (G4); Measure 2: two notes, one on the first line (G4) and one on the second line (A4); Measure 3: two notes, one on the second line (A4) and one on the second space (B4); Measure 4: two notes, one on the second space (B4) and one on the third line (C5); Measure 5: two notes, one on the third line (C5) and one on the third space (D5); Measure 6: three notes, one on the third space (D5), one on the fourth line (E5), and one on the fourth space (F5). Below the staff, the interval between the notes in each measure is labeled: 'б.2' (below the first measure), 'б.2' (below the first two notes of the second measure), 'м.2' (below the first two notes of the third measure), 'б.2' (below the first two notes of the fourth measure), 'б.2' (below the first two notes of the fifth measure), and 'б.2' (below the first two notes of the sixth measure).



A musical staff with a large black 'C' clef on the left. The staff contains two notes: one on the first line (G4) and one on the second line (A4). A vertical bar line is placed after the second note. Below the staff, the interval between the two notes is labeled 'м.2'.

Секунда – б.2, м.2.

A musical staff with a large black 'C' at the beginning. The staff contains six measures, each with a note on the first line (C4) and a second note. The intervals are labeled below the staff: m.2, m.2, б.2, m.2, m.2, m.2. The notes are: C4, D4 (m.2); C4, E4 (m.2); C4, F#4 (б.2); C4, G4 (m.2); C4, A4 (m.2); C4, B4 (m.2). Each interval is marked with a 'v' above the second note.

A musical staff with a large black 'C' at the beginning. The staff contains one measure with a note on the first line (C4) and a second note on the second line (Db4). The interval is labeled 'б.2' below the staff.

Летний день, жаркий день

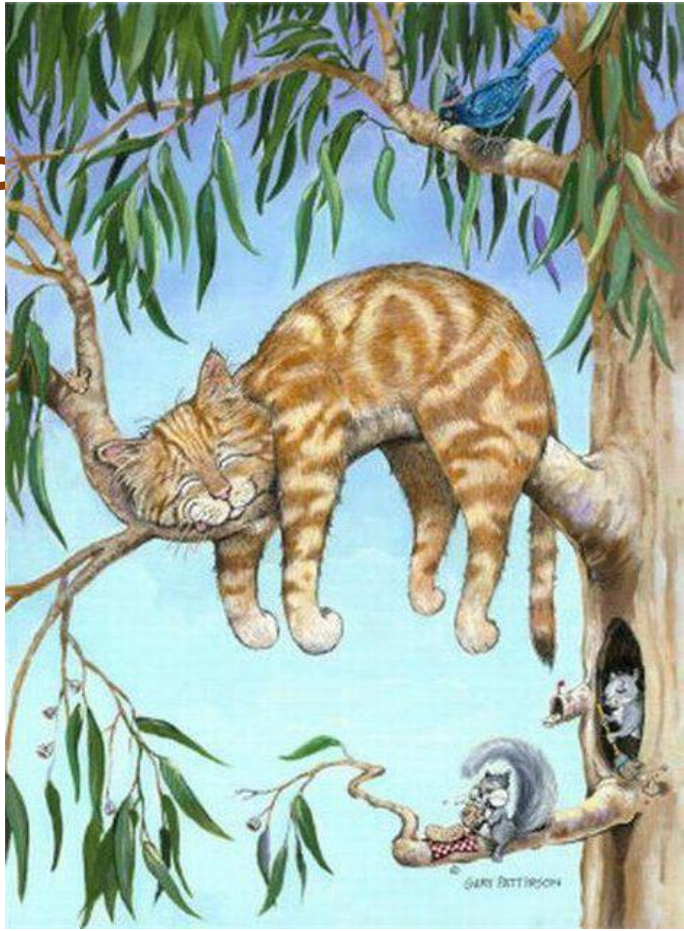
М.2

За мышами бегать лень

2

4

The image shows two staves of musical notation. The top staff is labeled with a '2' and the bottom with a '4', indicating the time signature. The notation consists of vertical stems and circles on a horizontal line. The first staff has six measures: the first two have solid black circles, the third has an open circle, the fourth has two solid black circles, and the fifth has an open circle. The second staff has seven measures: the first six have solid black circles, and the seventh has an open circle.

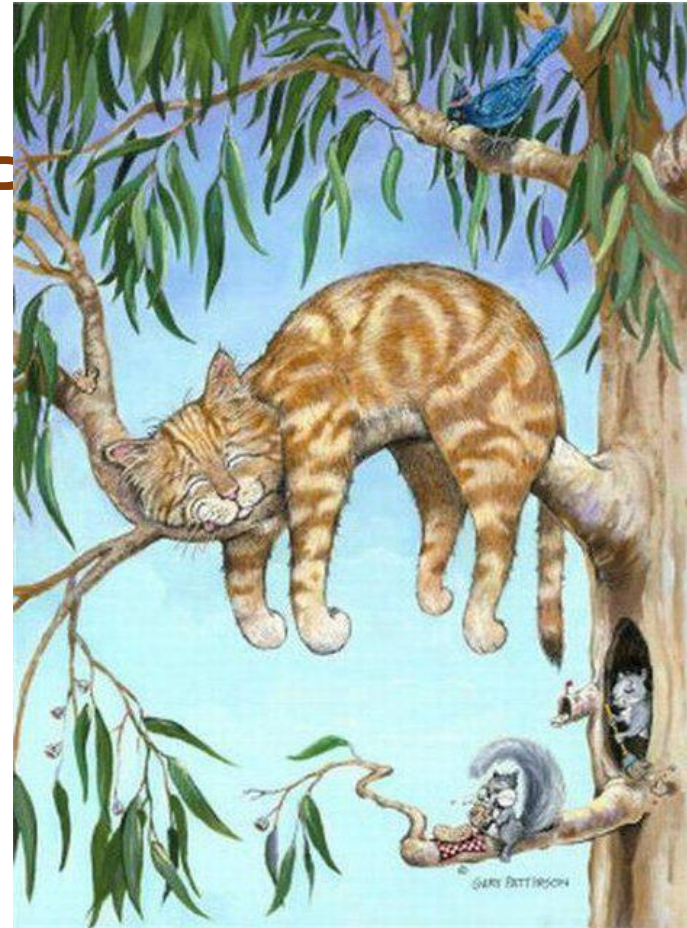
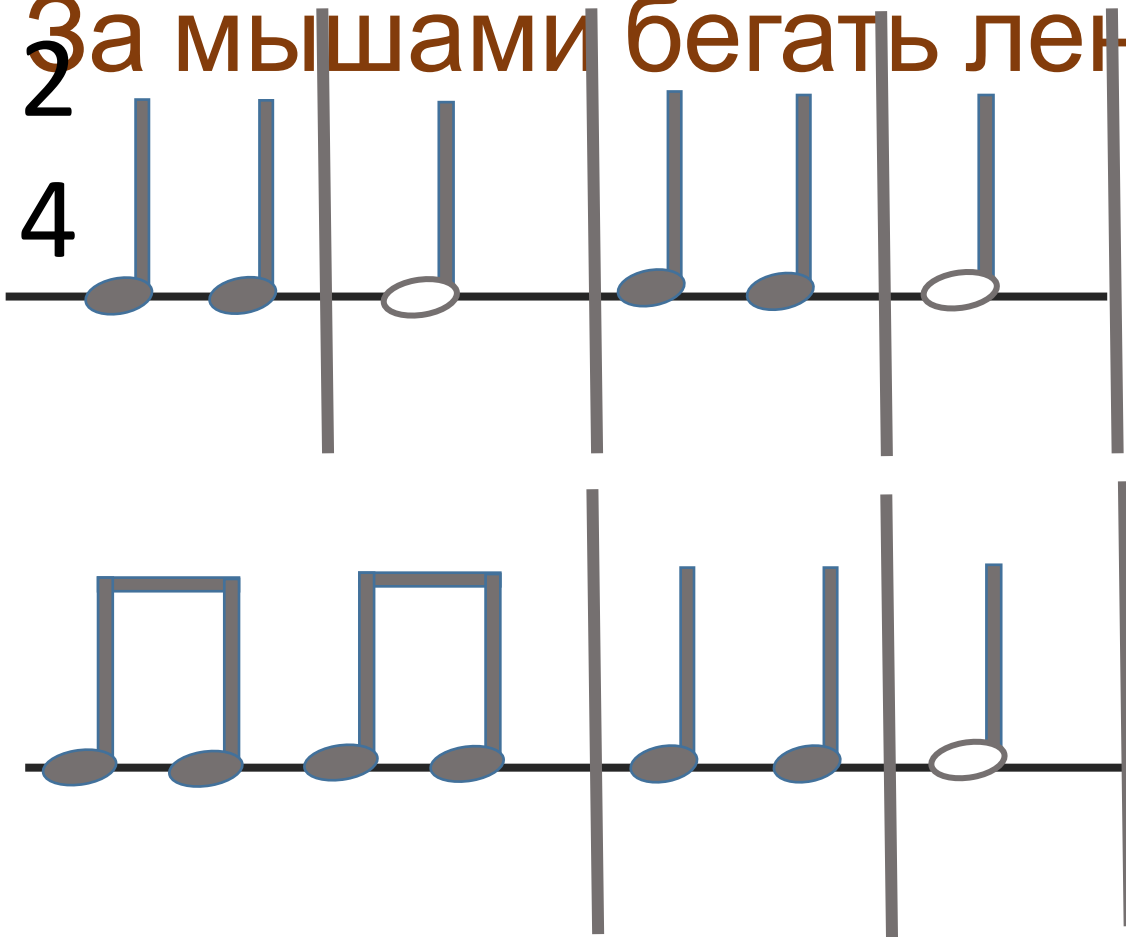


Летний день, жаркий
день

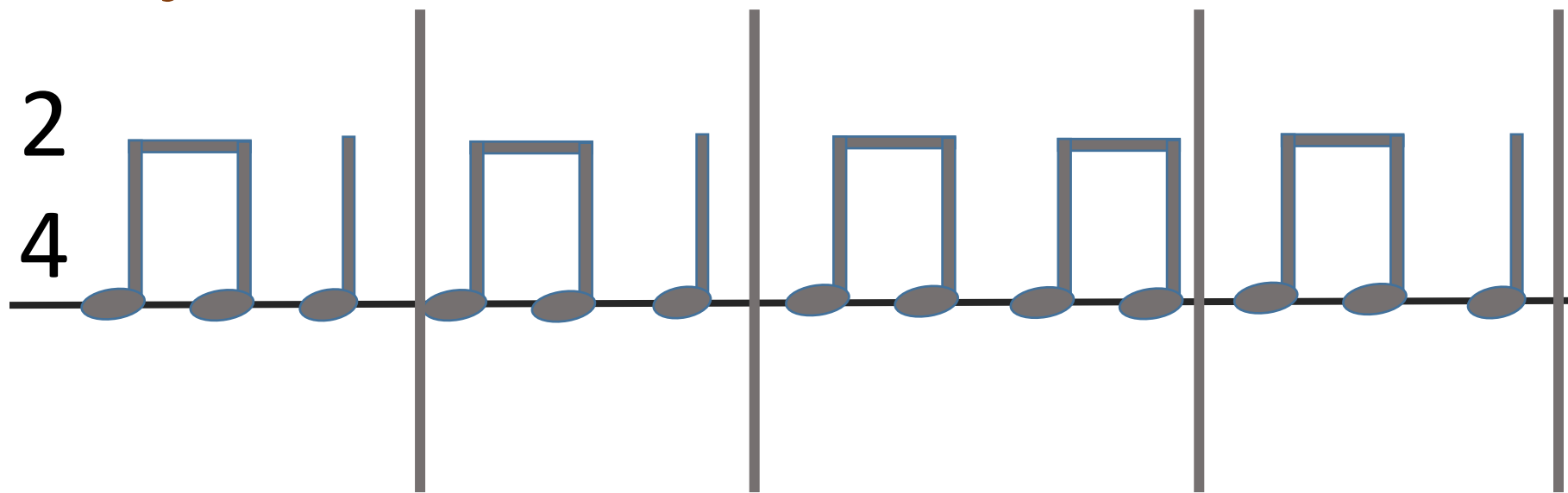
За мышами бегать лень

2

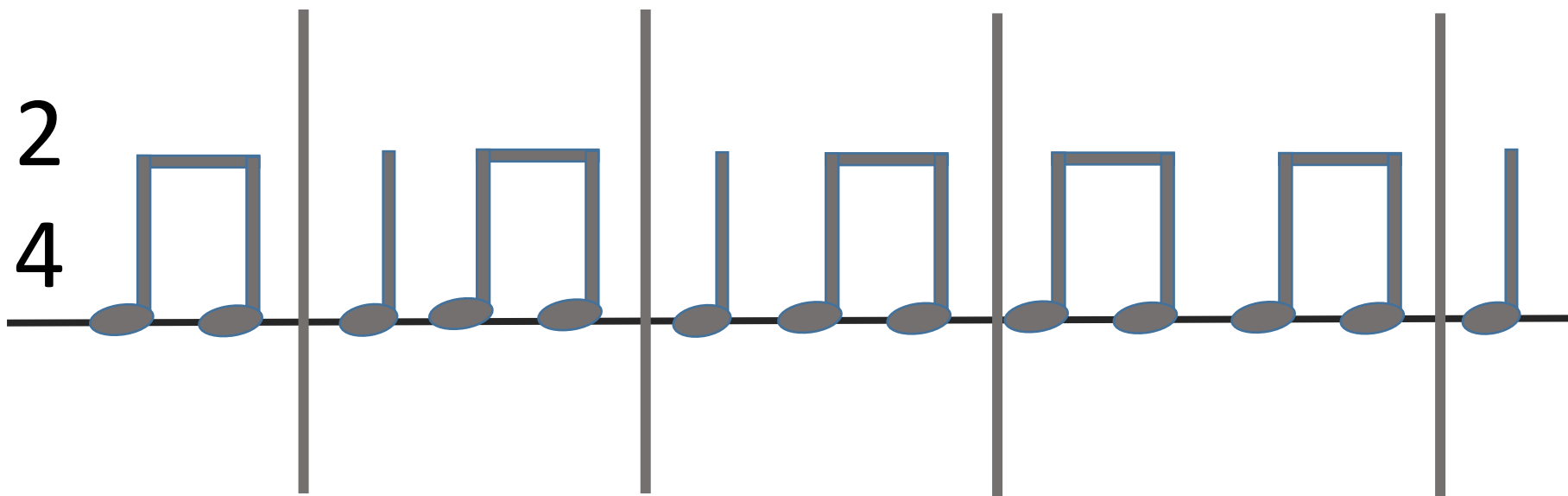
4



Паучок, паучок, Паутиновый жучок

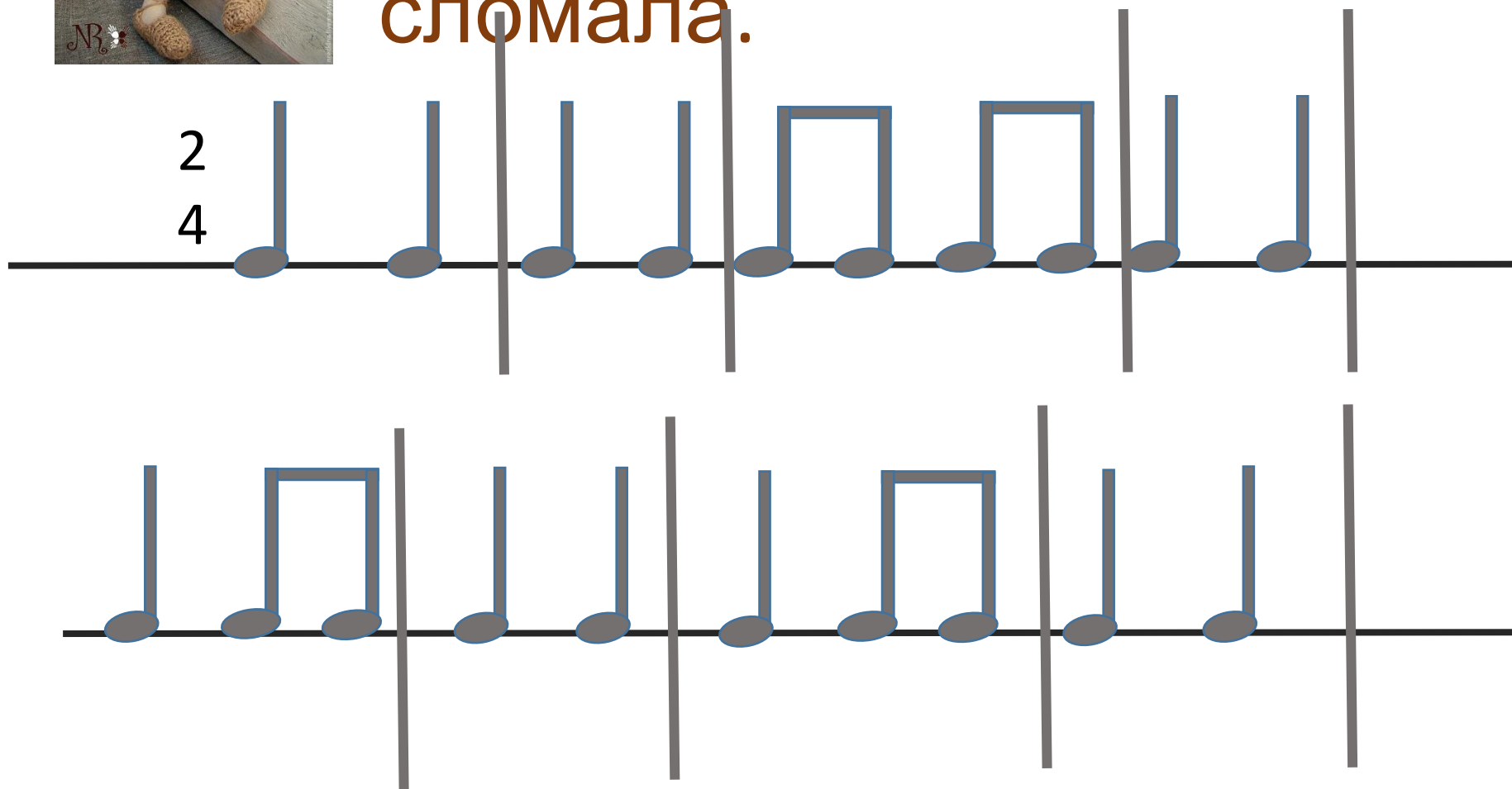


Паучок, паучок,
Паутиновый
жучок



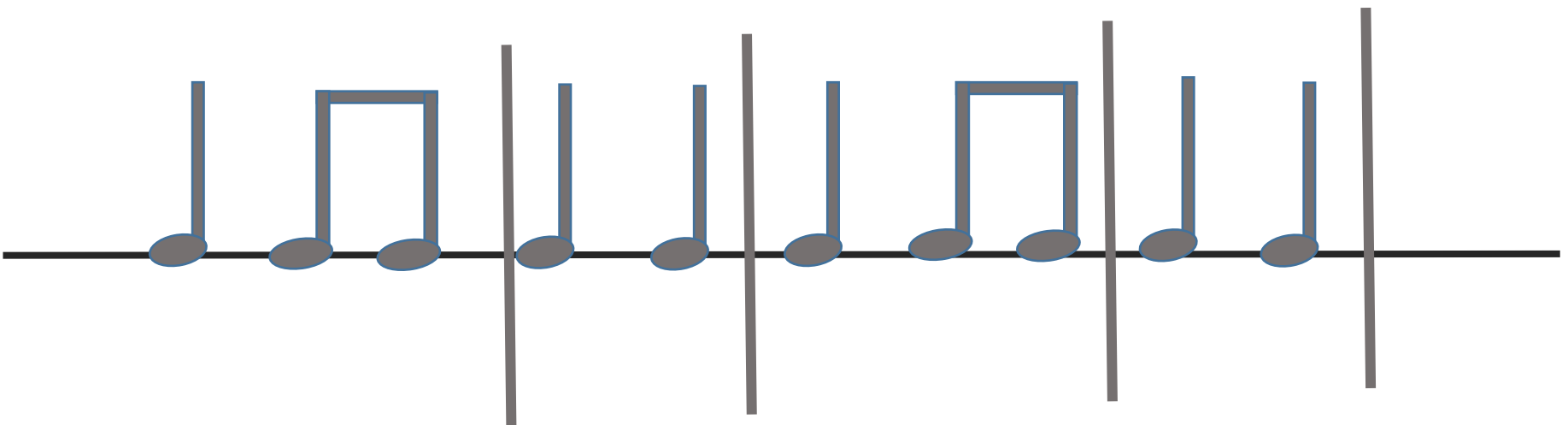
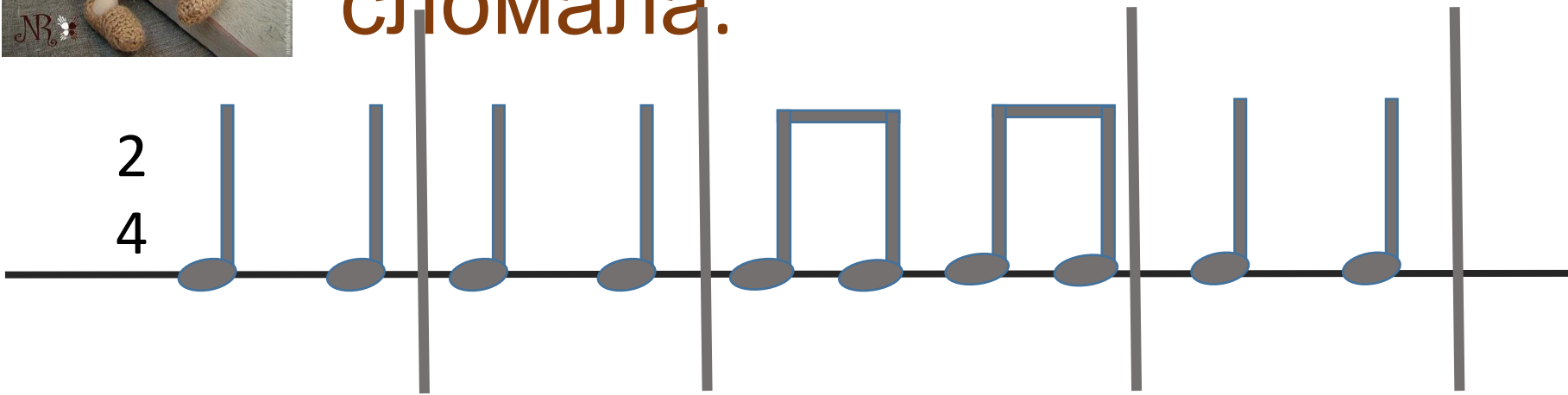


Бабка Ёжка, костяная ножка.
С печки упала, ножку
сломала.





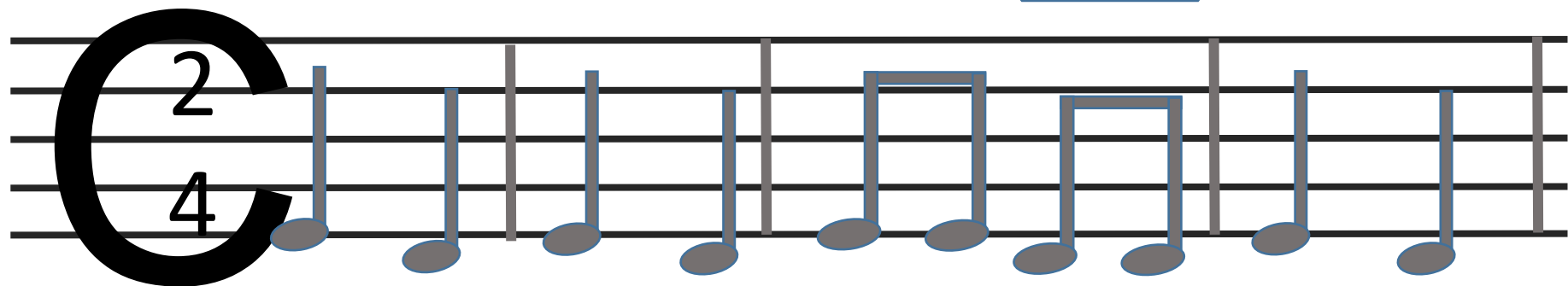
Бабка Ёжка, костяная ножка.
С печки упала, ножку
сломала.



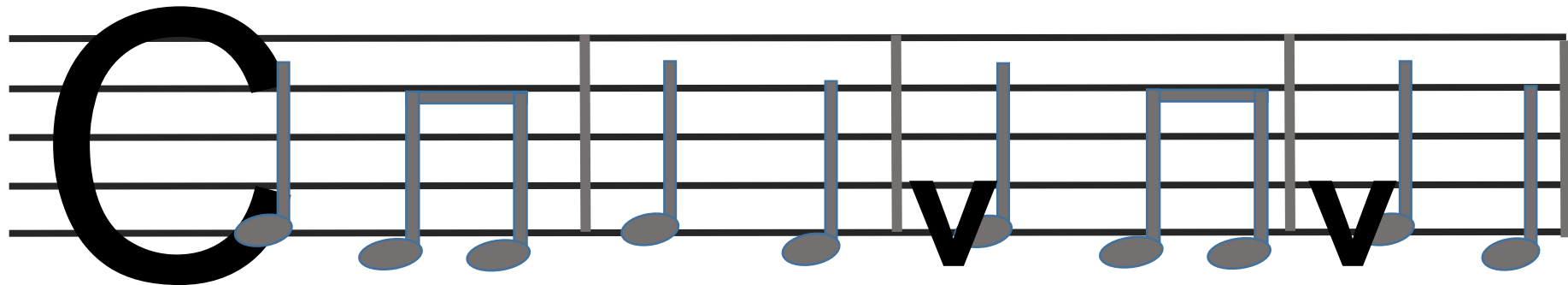
б.2

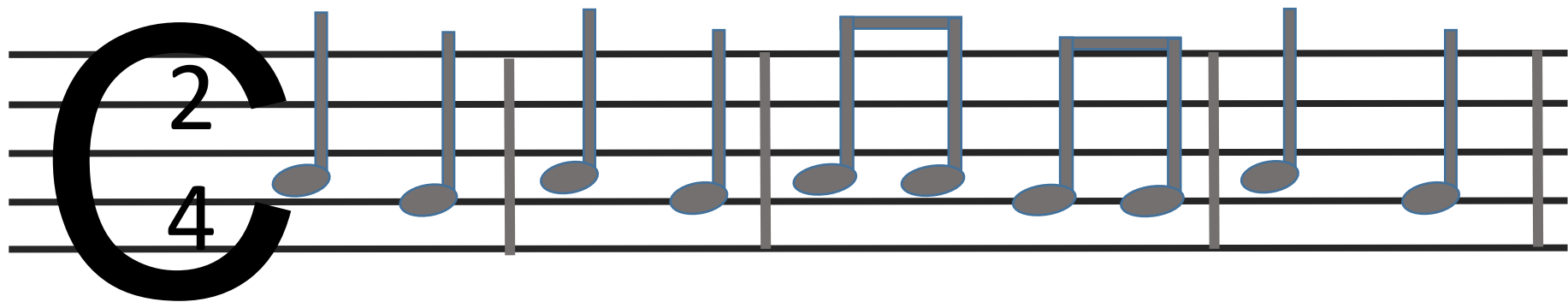
И

м.2

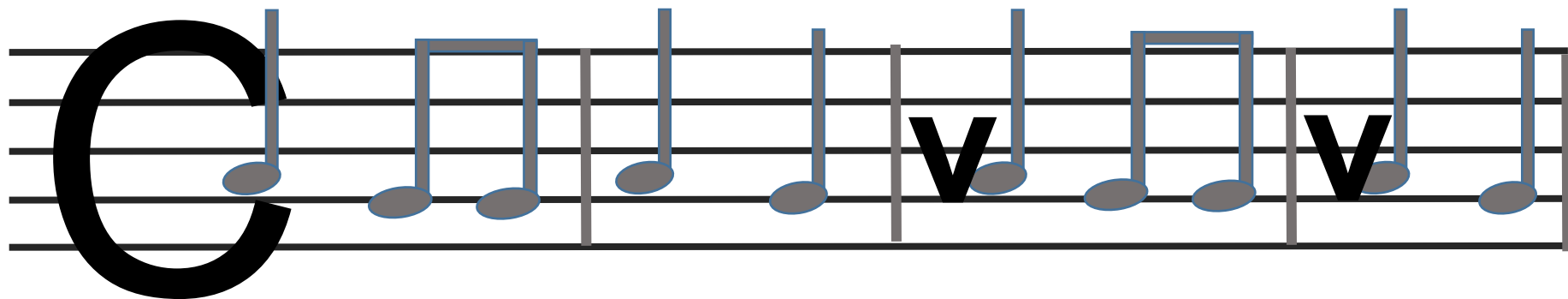


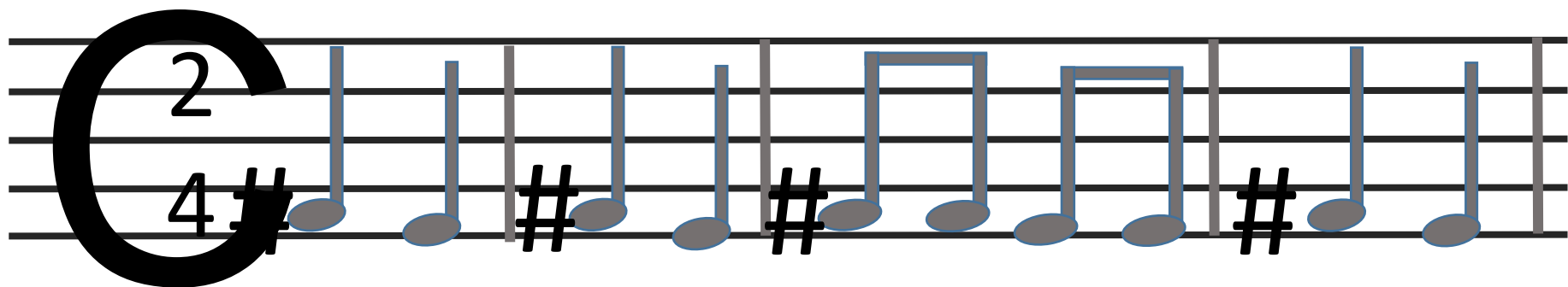
Где б.2? Где
м.2?



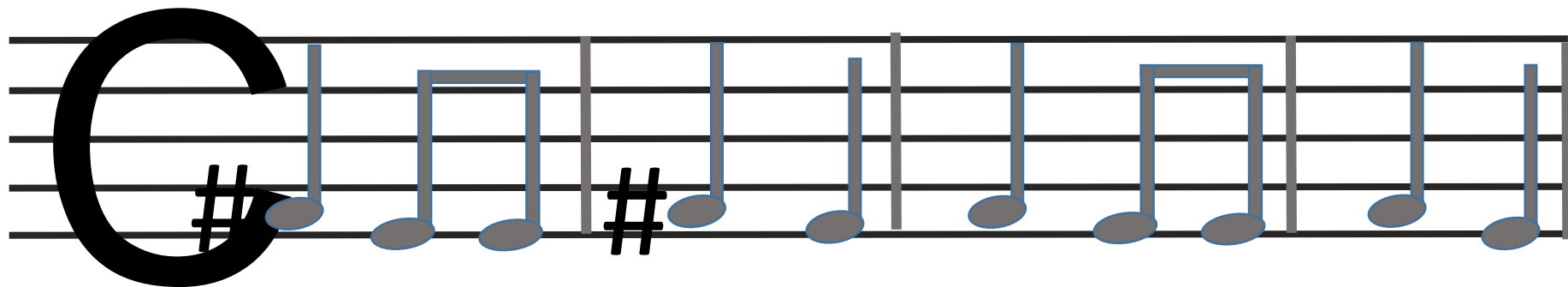


Где б.2? Где
м.2?

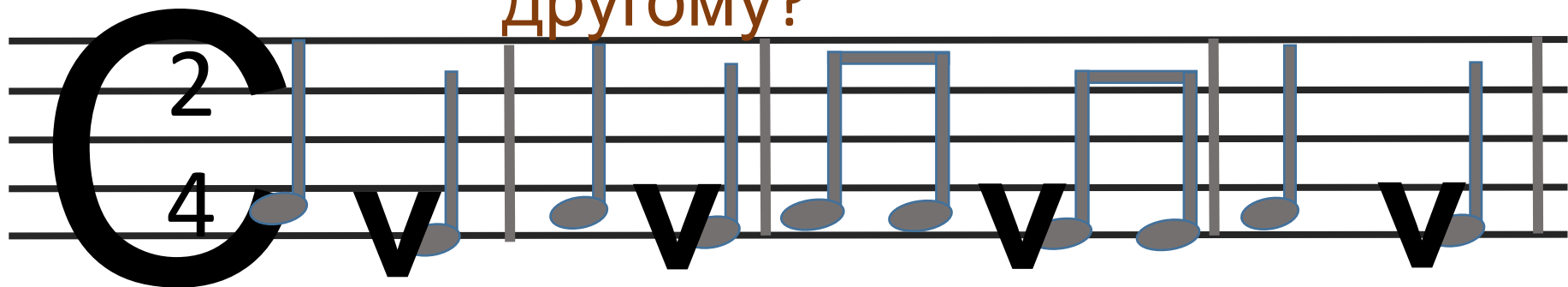




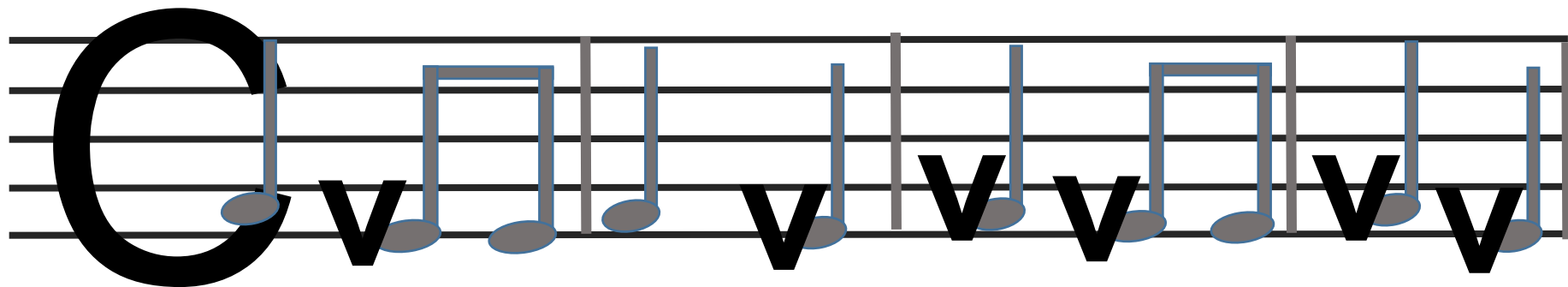
Где б.2? Где
м.2?



А по-
другому?



Где б.2? Где
м.2?

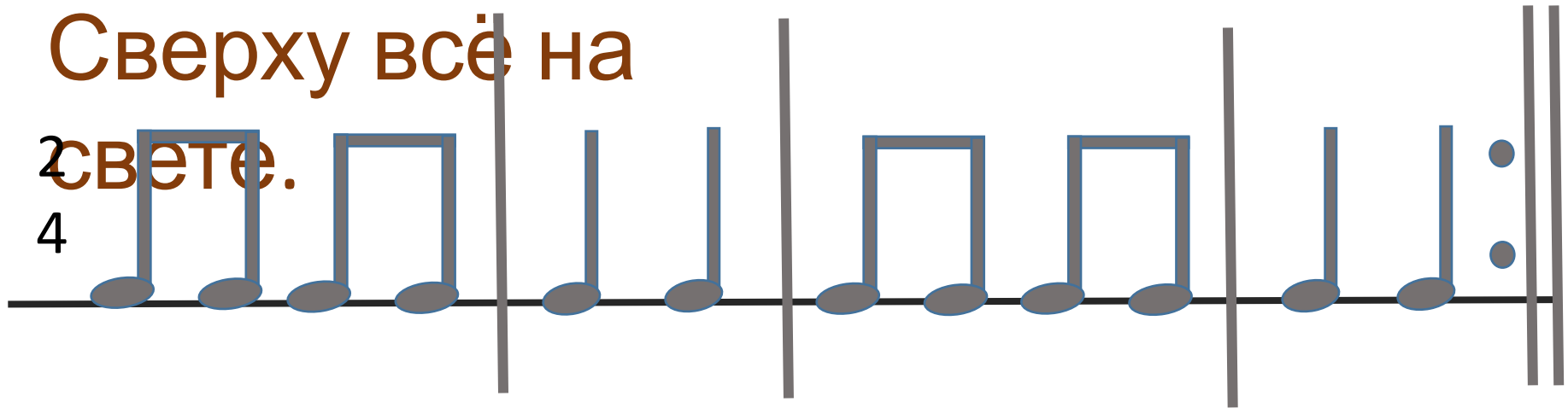


Едет, едет солнце
В золотой карете.
Видит, видит
солнце
Сверху всё на



2 свете.

4



Едет, едет солнце
В золотой карете.
Видит, видит
солнце
Сверху всё на

