

База данных «Музыкальный магазин»

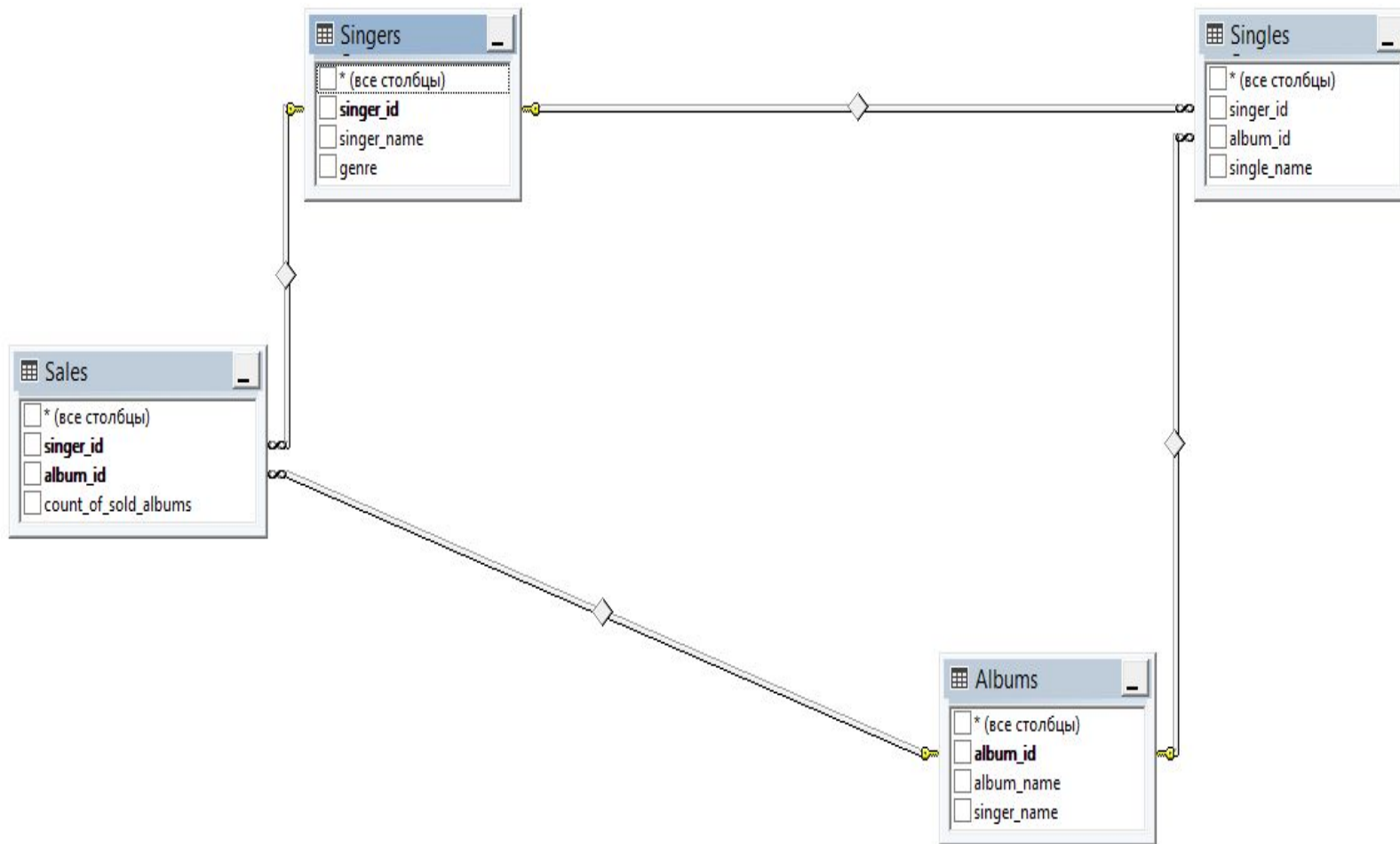
Существующие таблицы

- create table Albums(album_id int, album_name varchar(20), singer_name varchar(20), primary key(album_id))
- create table Singers(singer_id int, singer_name varchar(20), genre varchar(20), primary key(singer_id))
- create table Sales(singer_id int, album_id int, primary key(singer_id, album_id), foreign key(album_id) references Albums, foreign key(singer_id) references Singers)
- alter table Sales add count_of_sold_albums int
- create table Shop(singer_id int, album_id int, available int, primary key(album_id), foreign key(album_id) references Albums)
- create table Studios(singer_id int, album_id int, label_name varchar(20), primary key(album_id), foreign key(album_id) references Albums)
- create table Singles(singer_id int, album_id int, single_name varchar(20), foreign key(singer_id) references Singers, foreign key(album_id) references Albums)

Существующие отношения

- 1:1
- 1:M
- M:M

M:M



M:M

- insert into Albums values(0011, 'Parachutes', 'Coldplay')
- insert into Albums values(0018, 'Ghost Stories', 'Coldplay')
- insert into Albums values(0022, 'Songs About Jane', 'Maroon 5')
- insert into Albums values(0027, 'Red Pill Blues', 'Maroon 5')
- insert into Albums values(0033, 'ANTI', 'Rihanna')
- insert into Albums values(0036, 'Loud', 'Rihanna')

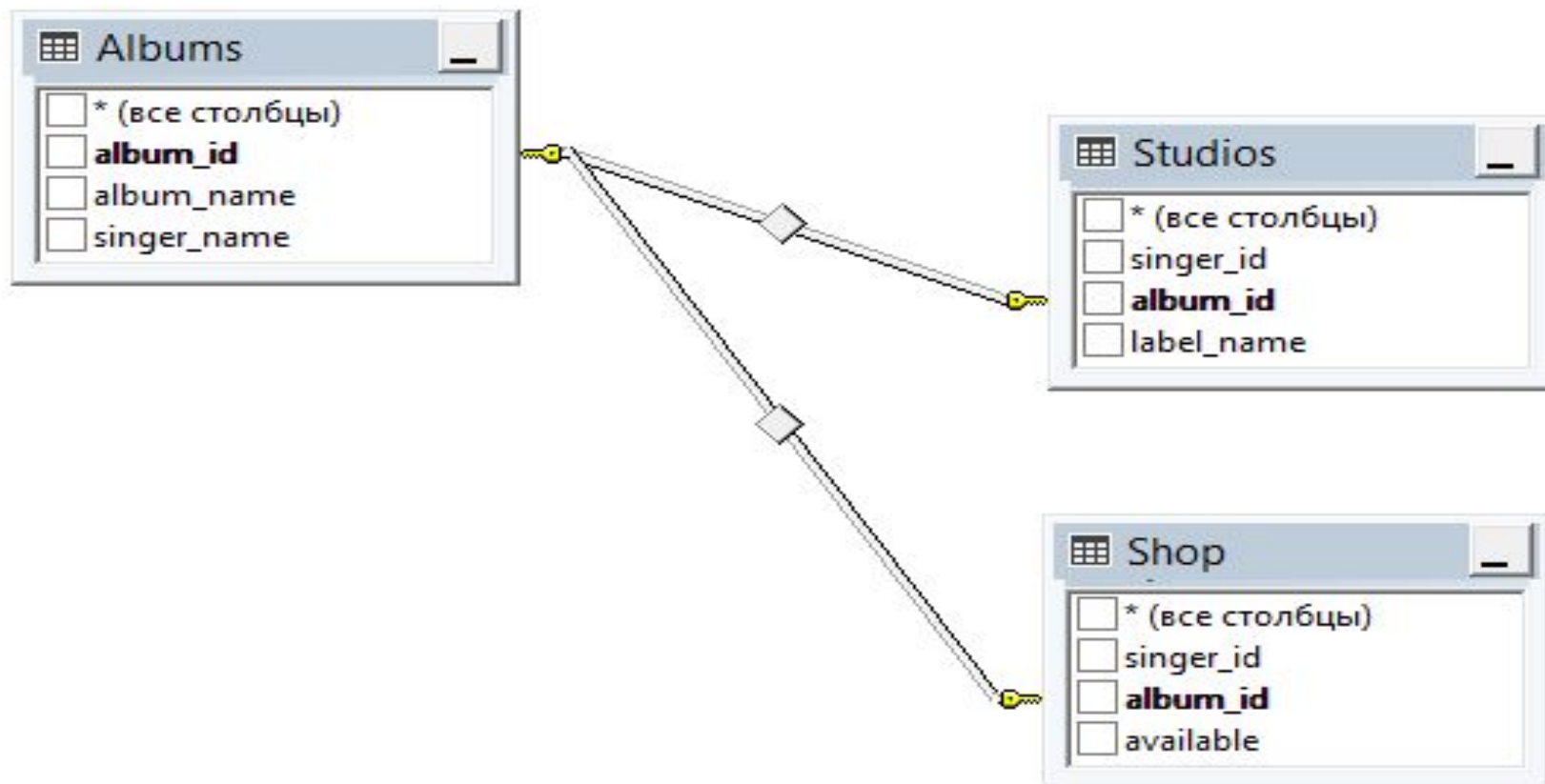
- insert into Singers values(1100, 'Coldplay', 'Britpop-Rock')
- insert into Singers values(2200, 'Maroon 5', 'Pop-Rock')
- insert into Singers values(3300, 'Rihanna', 'R 'n' B')

- insert into Sales values(1100, 0011, 100)
- insert into Sales values(1100, 0018, 80)
- insert into Sales values(2200, 0022, 200)
- insert into Sales values(2200, 0027, 180)
- insert into Sales values(3300, 0033, 230)
- insert into Sales values(3300, 0036, 210)

M:M

	singer_id	album_id	count_of_sold_albums
1	1100	11	100
2	1100	18	80
3	2200	22	200
4	2200	27	180
5	3300	33	230
6	3300	36	210

1:1



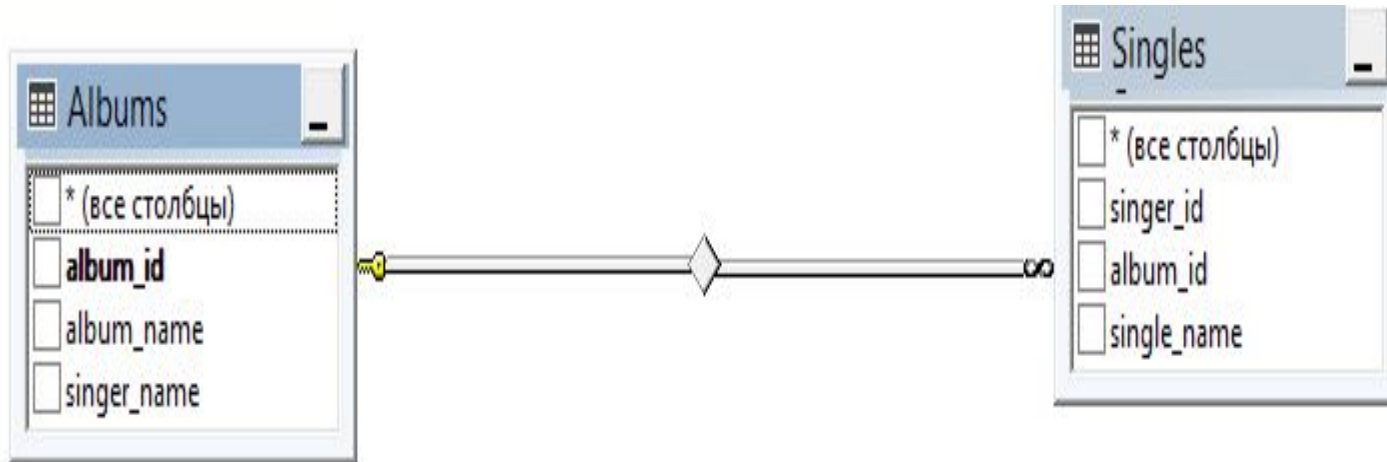
1:1

- insert into Shop values(1100, 0011, 0)
 - insert into Shop values(1100, 0018, 1)
 - insert into Shop values(2200, 0022, 1)
 - insert into Shop values(2200, 0027, 1)
 - insert into Shop values(3300, 0033, 0)
 - insert into Shop values(3300, 0036, 0)
-
- insert into Studios values(1100, 0011, 'Parlaphone')
 - insert into Studios values(1100, 0018, 'Parlaphone')
 - insert into Studios values(2200, 0022, 'Rumbo Recorders')
 - insert into Studios values(2200, 0027, 'Conway Recording')
 - insert into Studios values(3300, 0033, 'Conway Recording')
 - insert into Studios values(3300, 0036, 'Parlaphone')

1:1

	singer_id	album_id	label_name
1	1100	11	Parlaphone
2	1100	18	Parlaphone
3	2200	22	Rumbo Recorders
4	2200	27	Conway Recording
5	3300	33	Conway Recording
6	3300	36	Parlaphone

1:M



1:M

- insert into Singles values(1100, 0011, 'Yellow')
- insert into Singles values(1100, 0011, 'Sparks')
- insert into Singles values(2200, 0027, 'Girls Like You')
- insert into Singles values(2200, 0027, 'Wait')
- insert into Singles values(3300, 0033, 'Kiss it Better')
- insert into Singles values(3300, 0033, 'Love on The Brain')

1:M

	singer_id	album_id	single_name
1	1100	11	Yellow
2	1100	11	Sparks
3	2200	27	Girls Like You
4	2200	27	Wait
5	3300	33	Kiss it Better
6	3300	33	Love on The Brain

