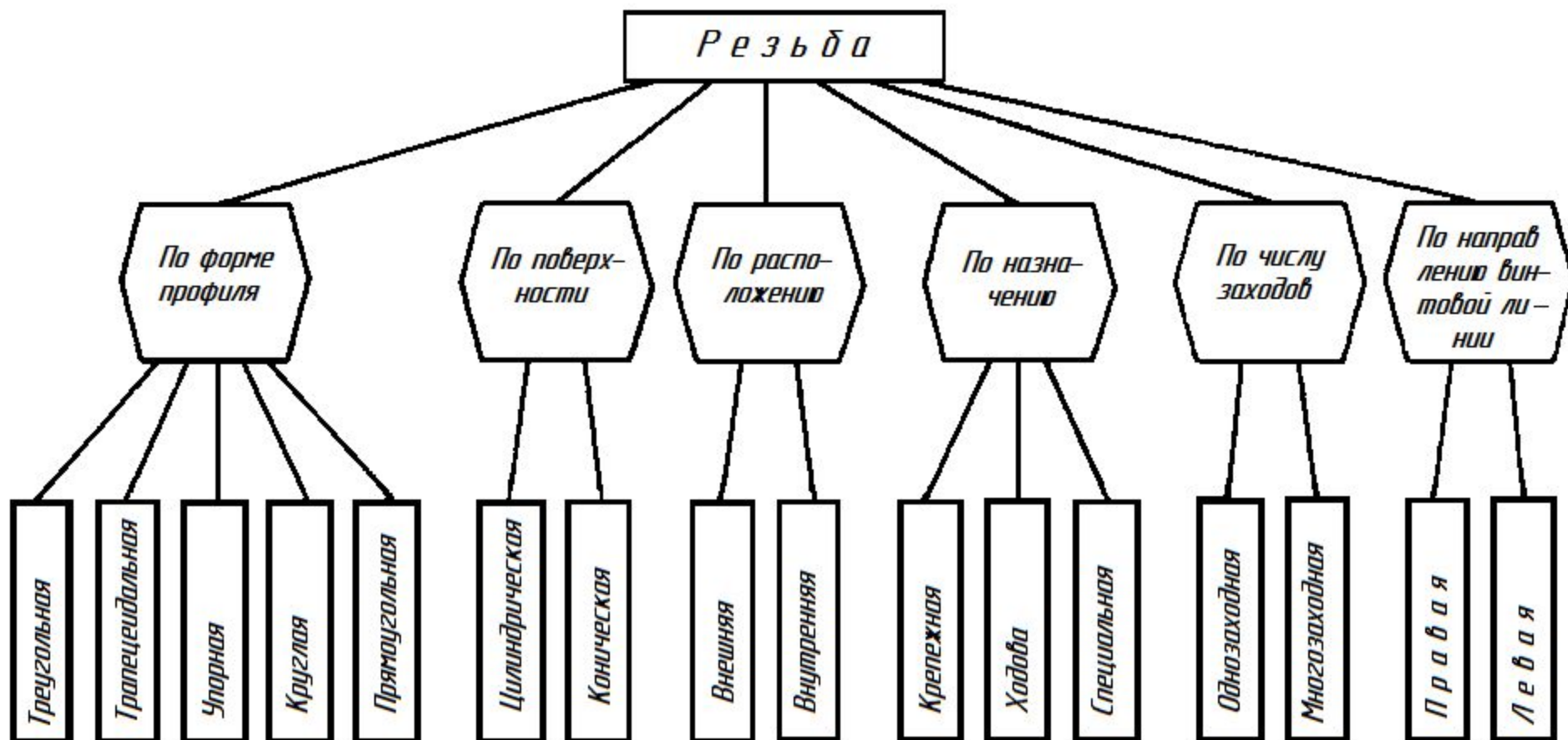
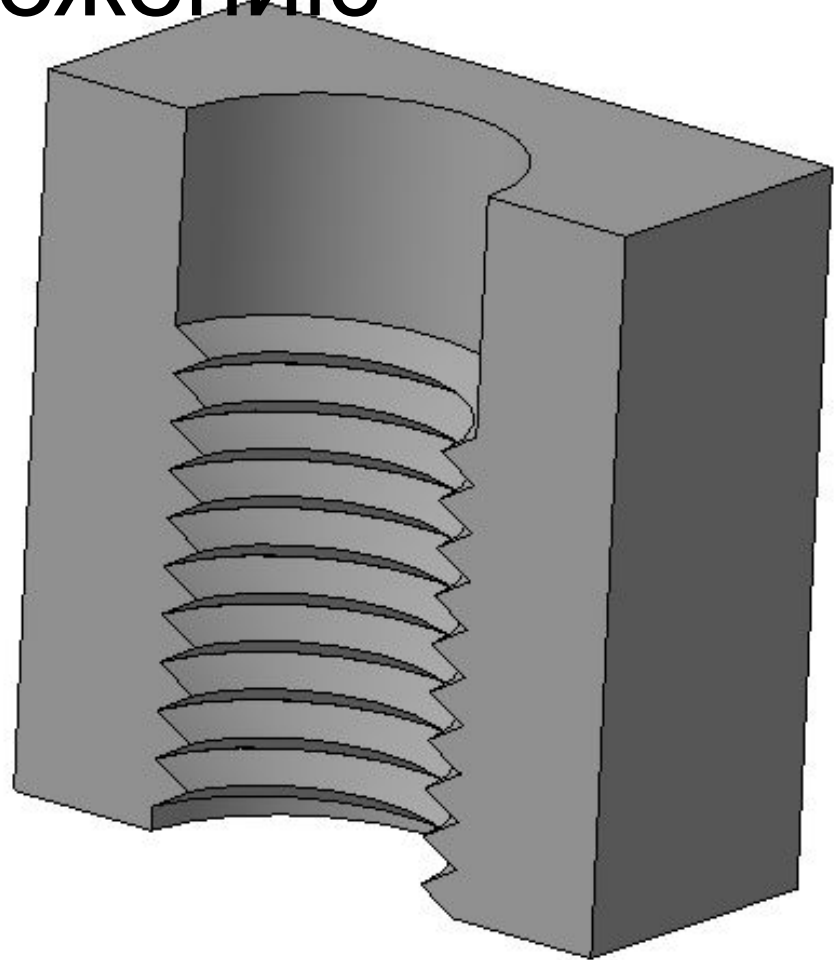
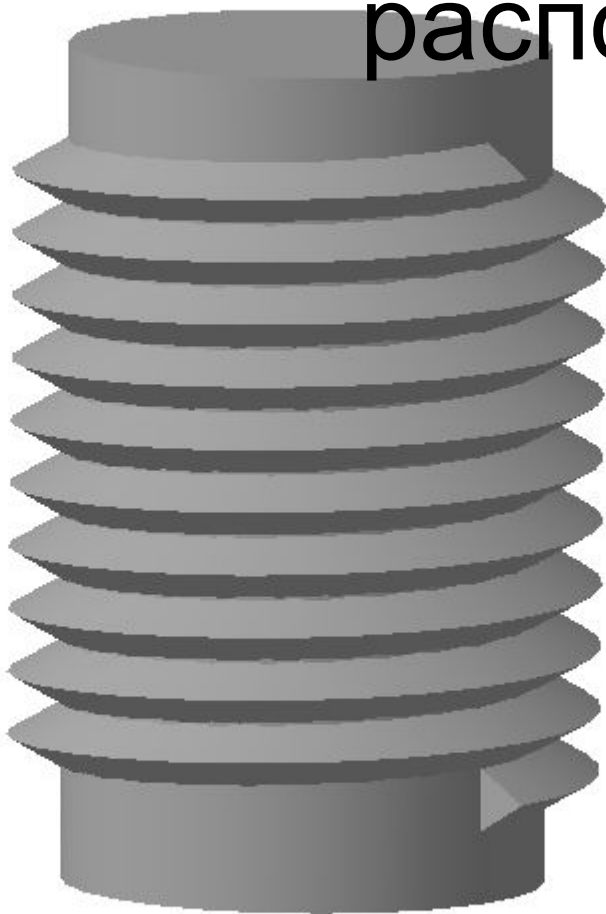


РЕЗЬБЫ

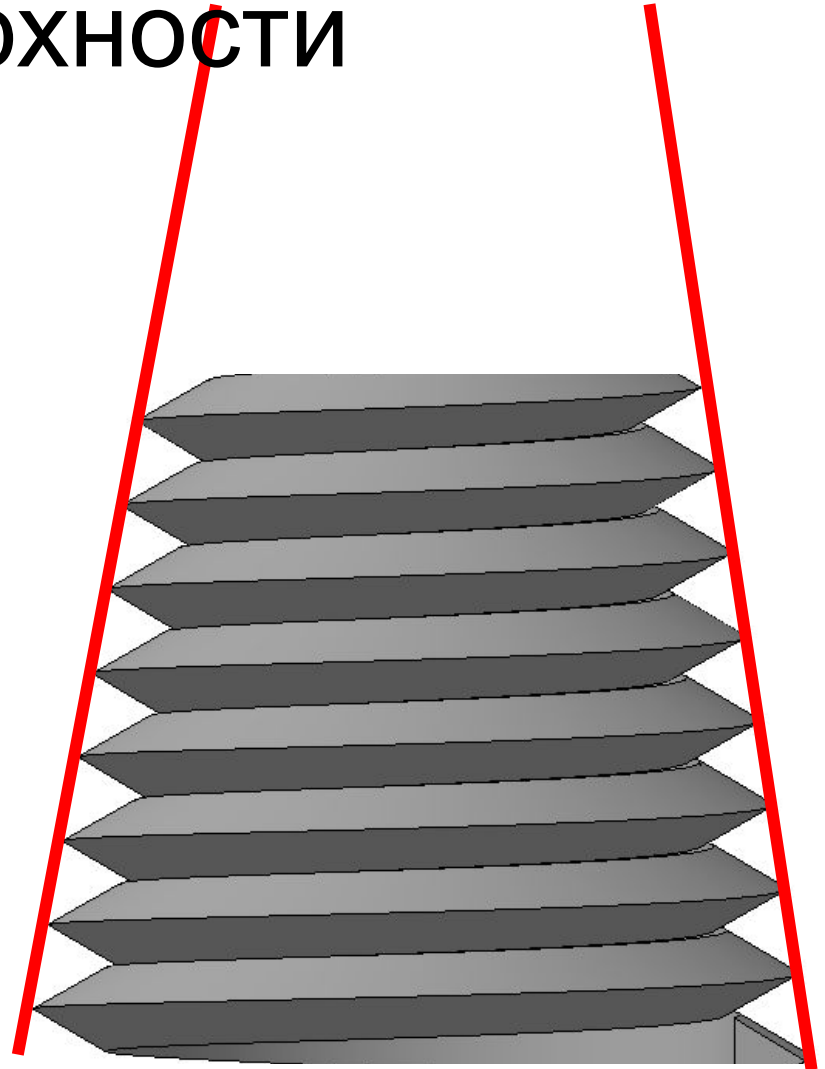
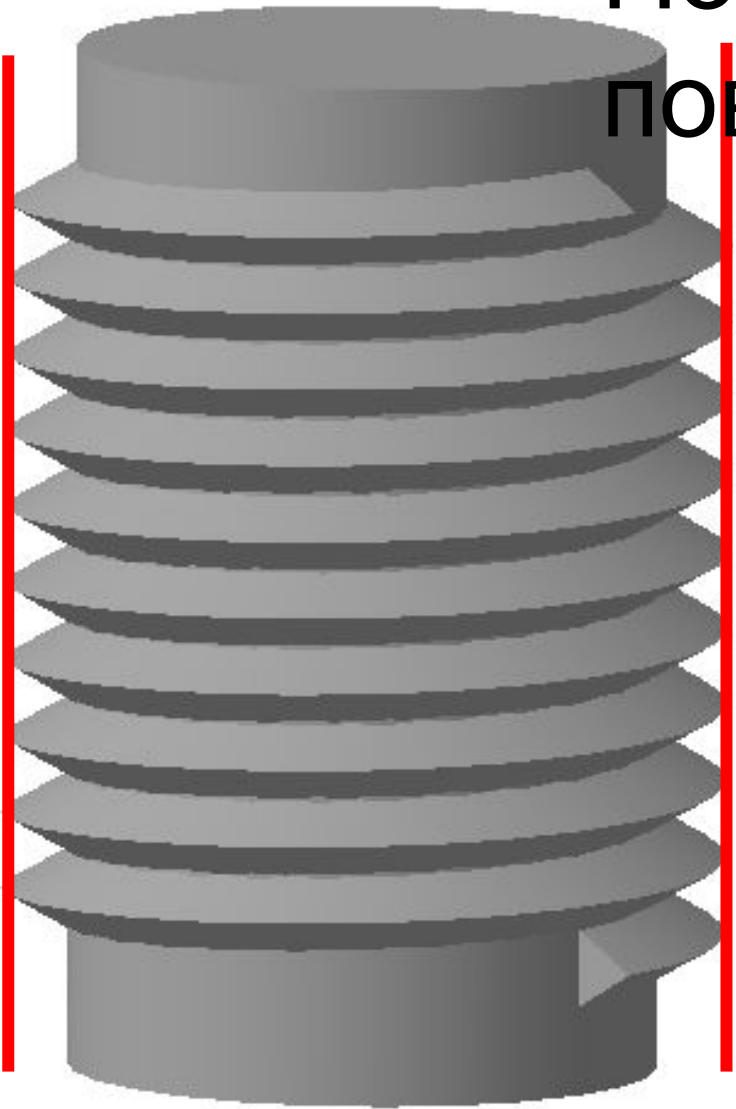
КЛАССИФИКАЦИЯ



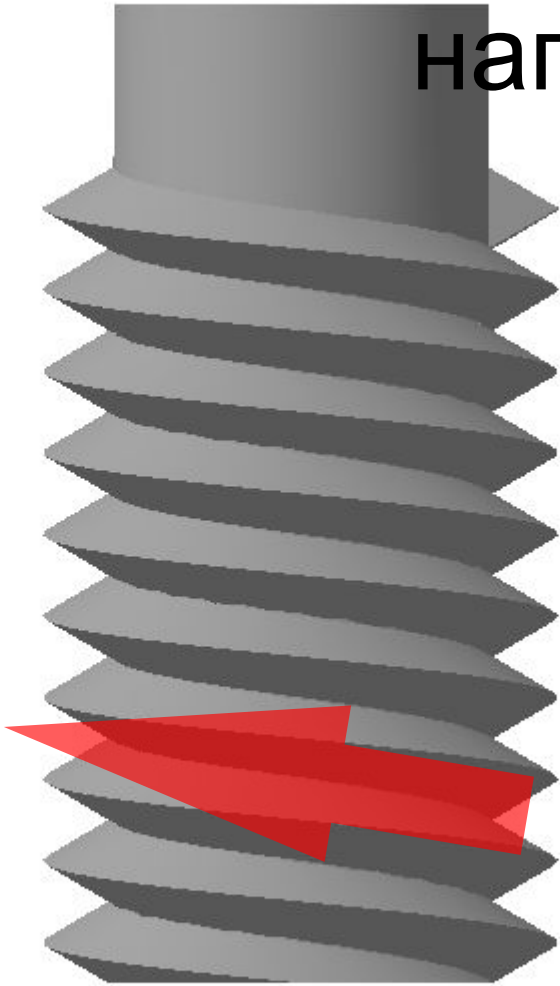
По расположению



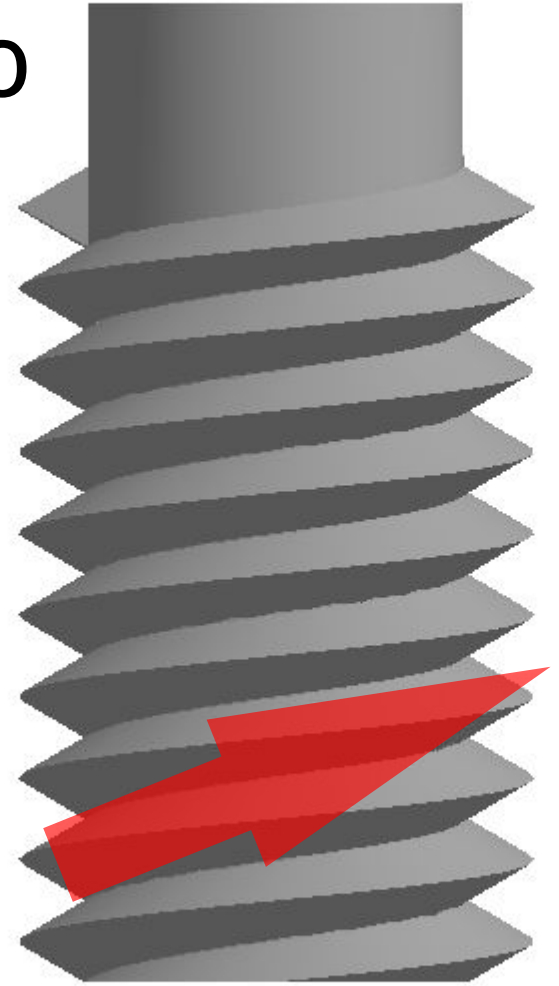
По поверхности



По
направлению

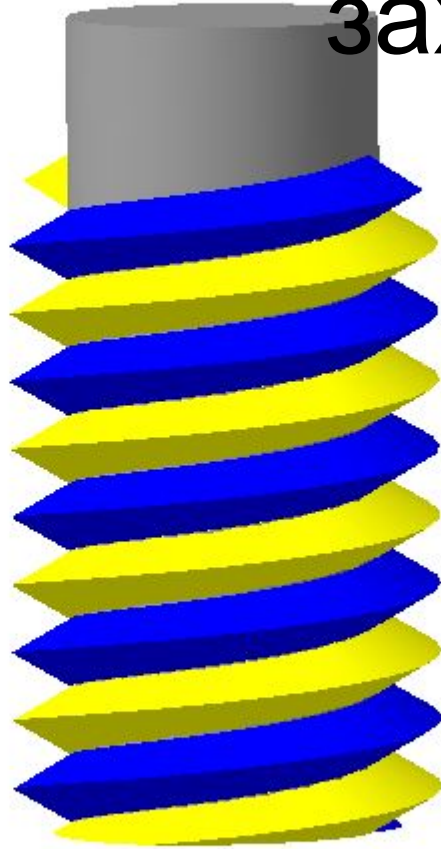


Левая

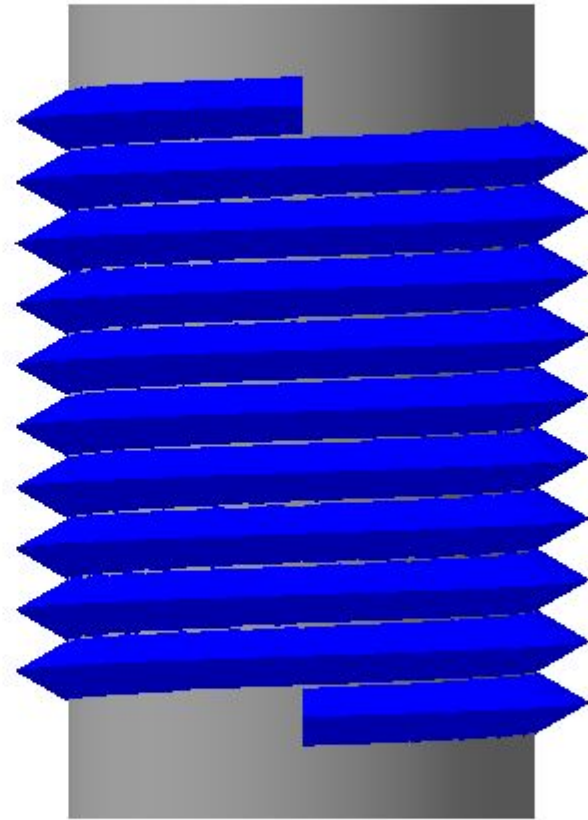


Правая

По числу
заходов

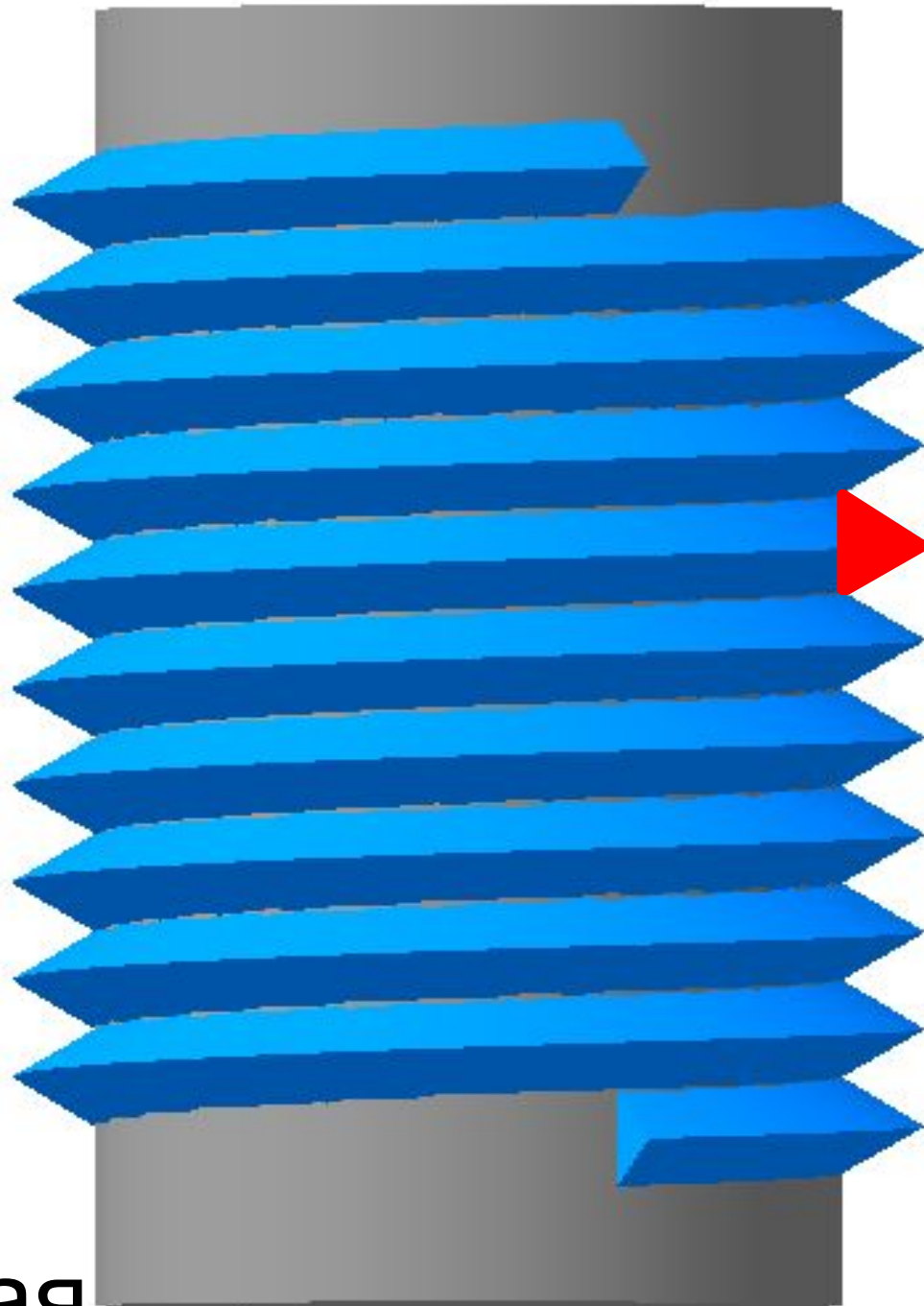


Двухзаходная



Однозаходная

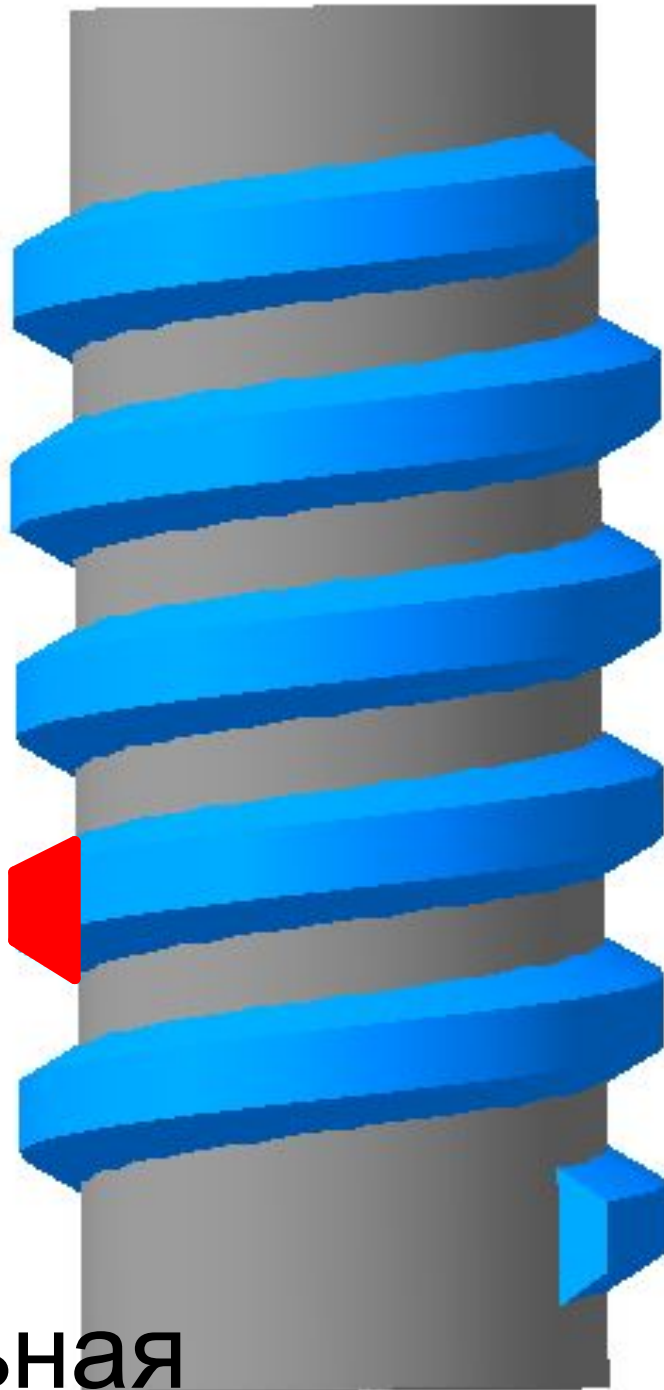
По
профилю



M

Метрическая

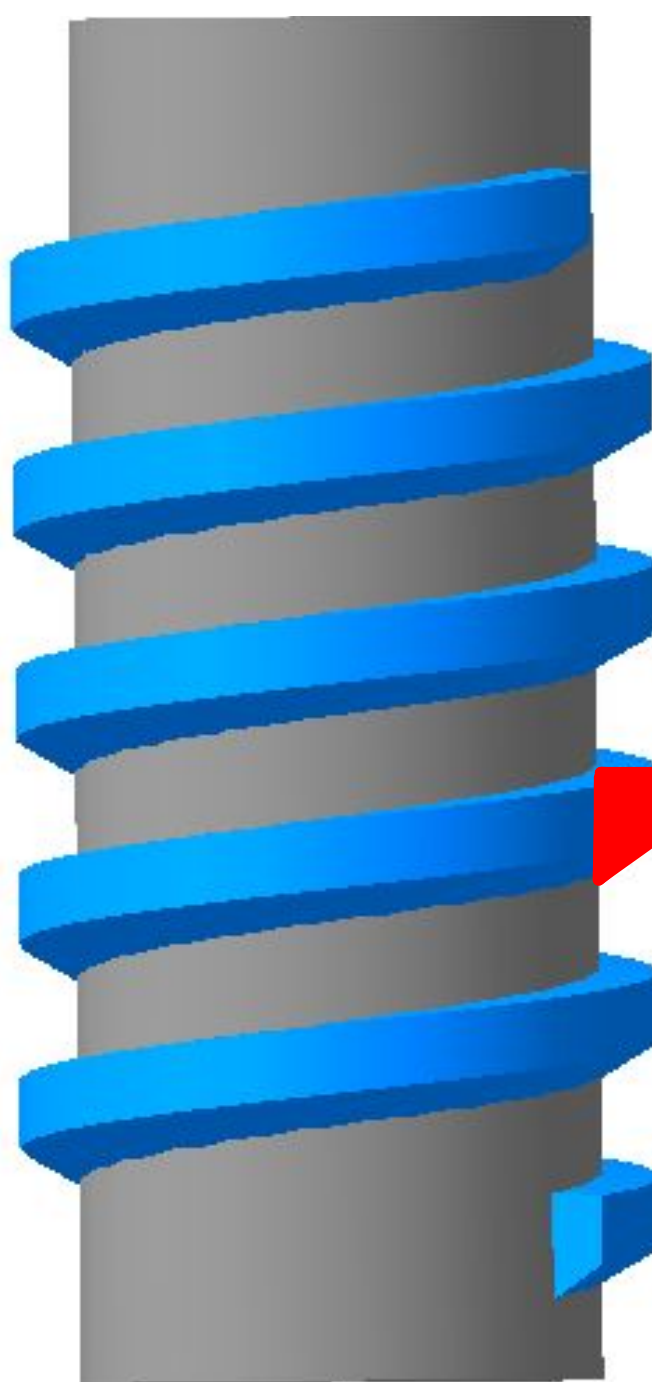
По
профилю



Tr

Трапецеидальная

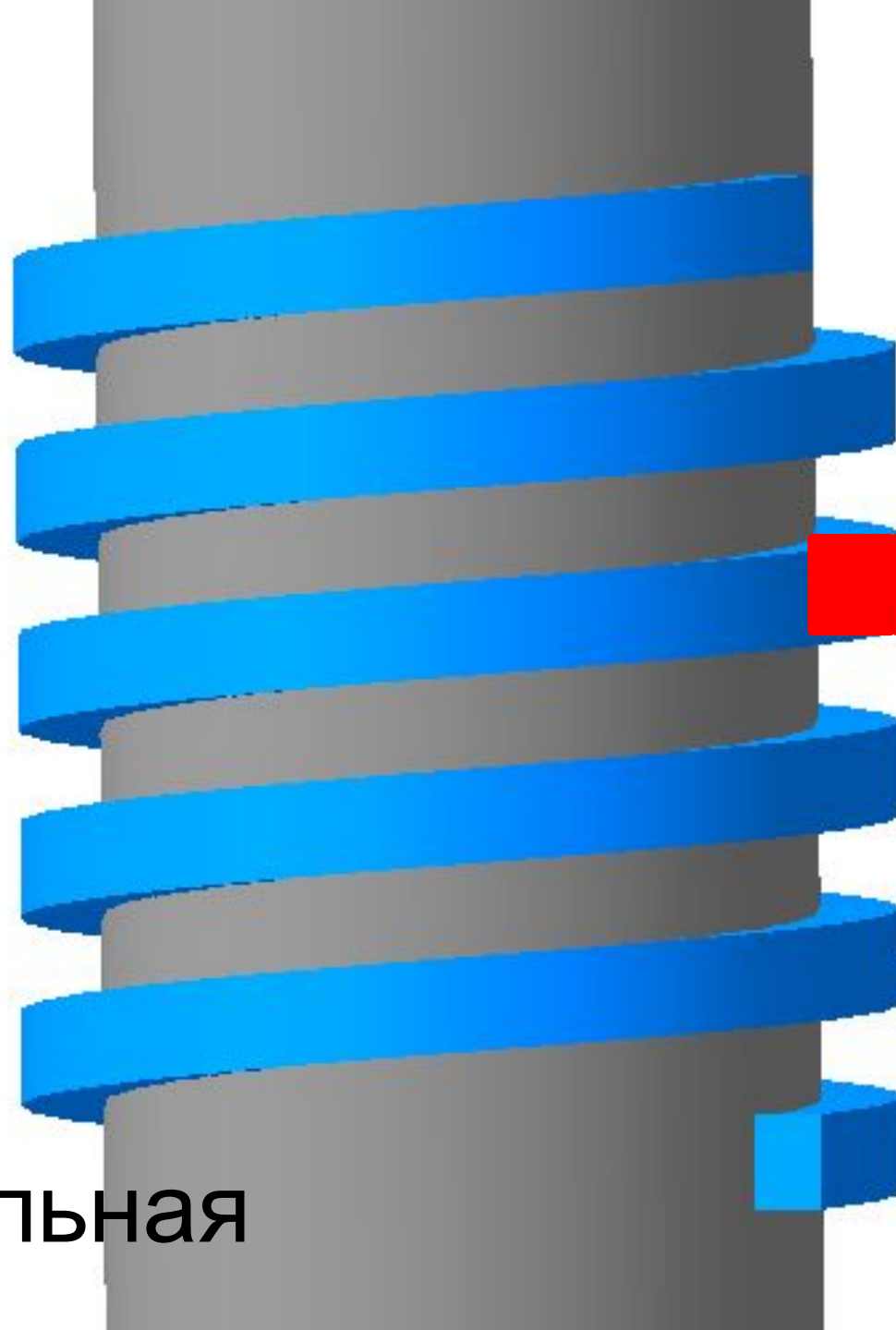
По
профилю



s

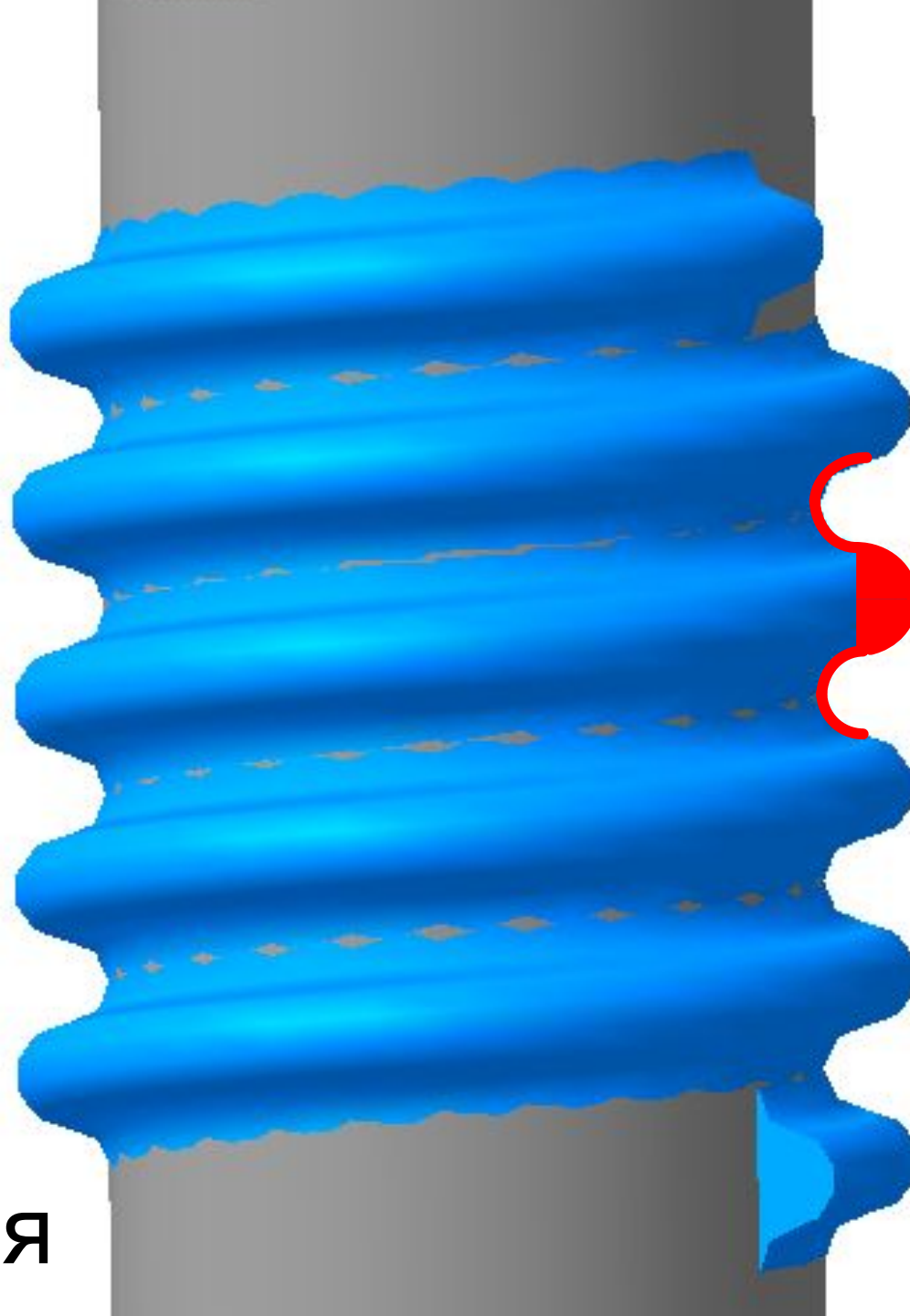
Упорная

По
профилю



Прямоугольная

По
профилю



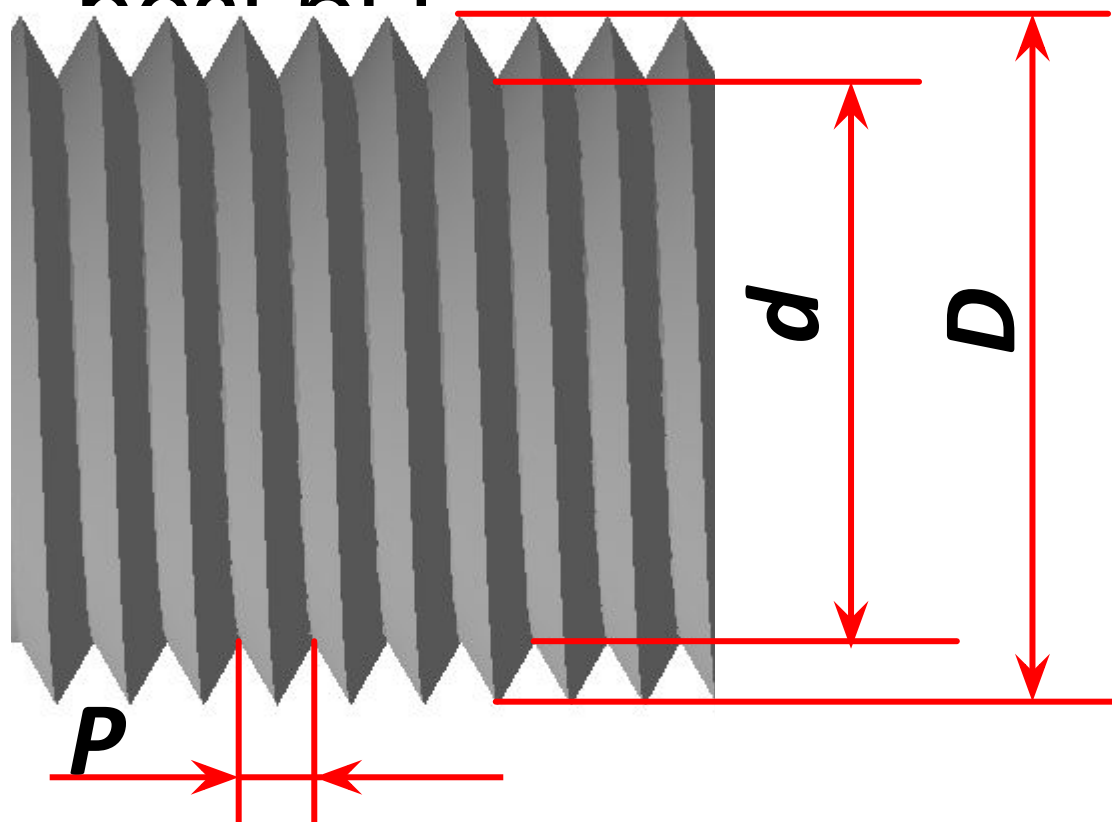
Kp

Круглая

Параметры резьбы

Параметры

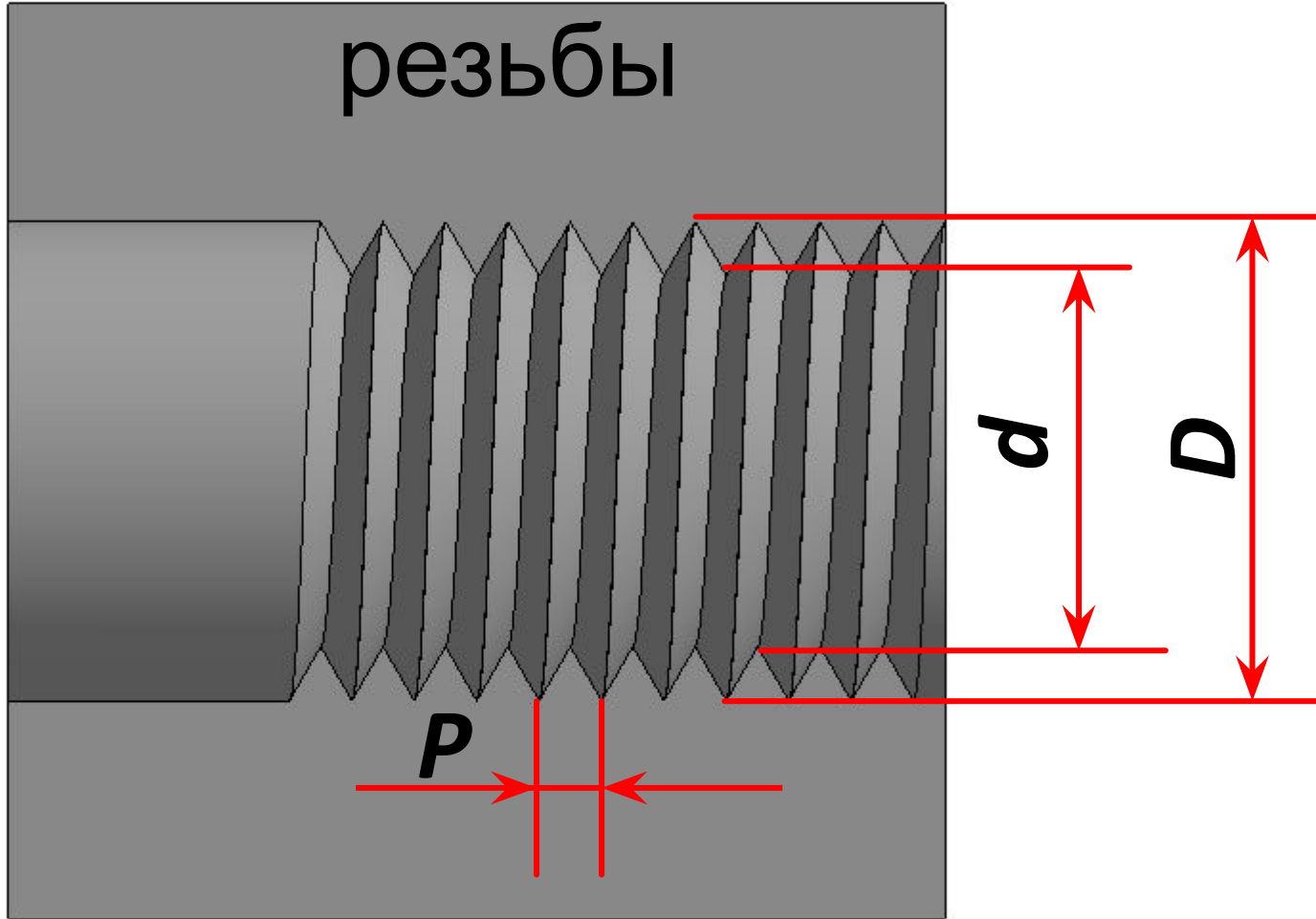
резьбы



D – наружный диаметр;
 d – внутренний диаметр;
 P – шаг;

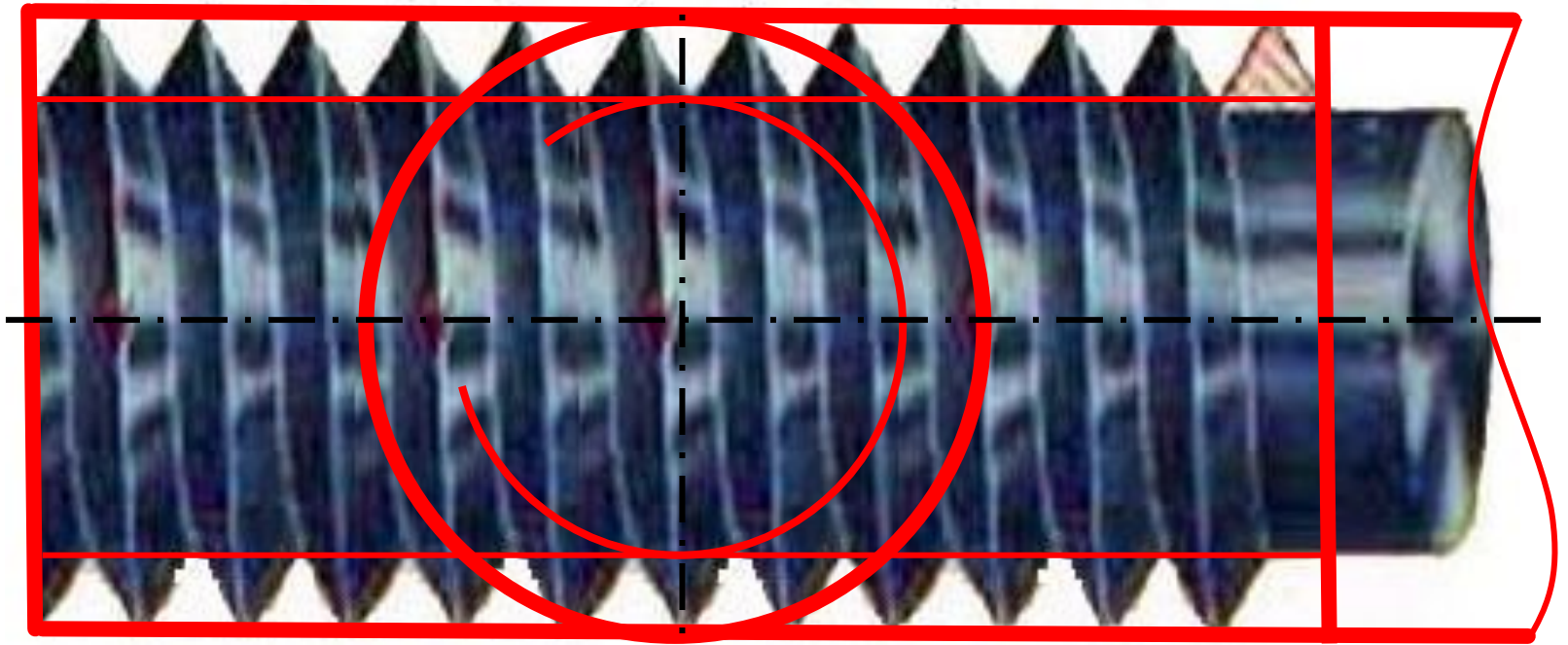
Параметры

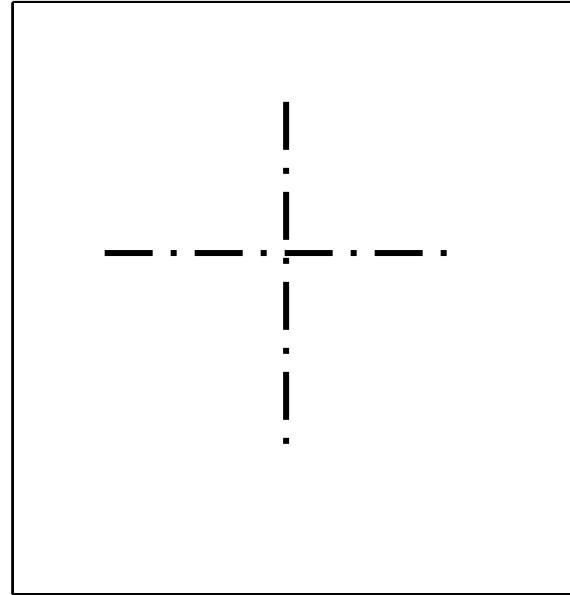
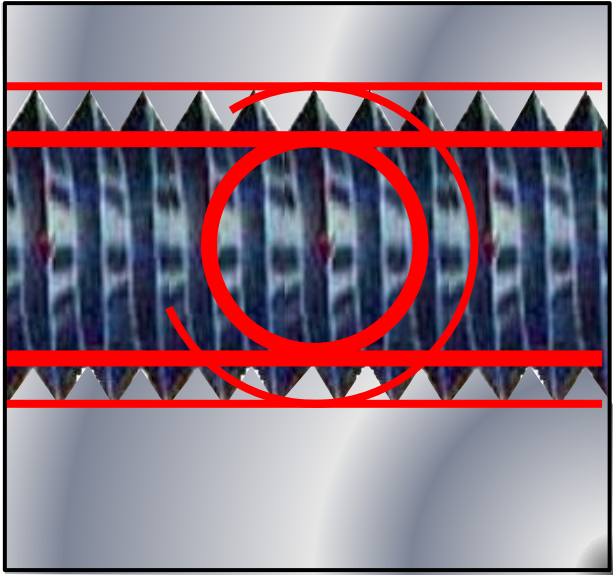
резьбы

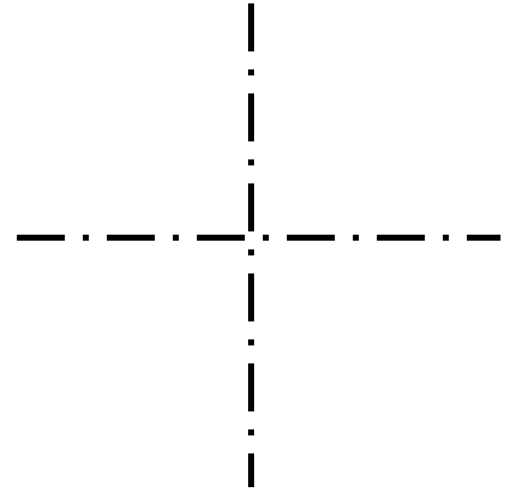
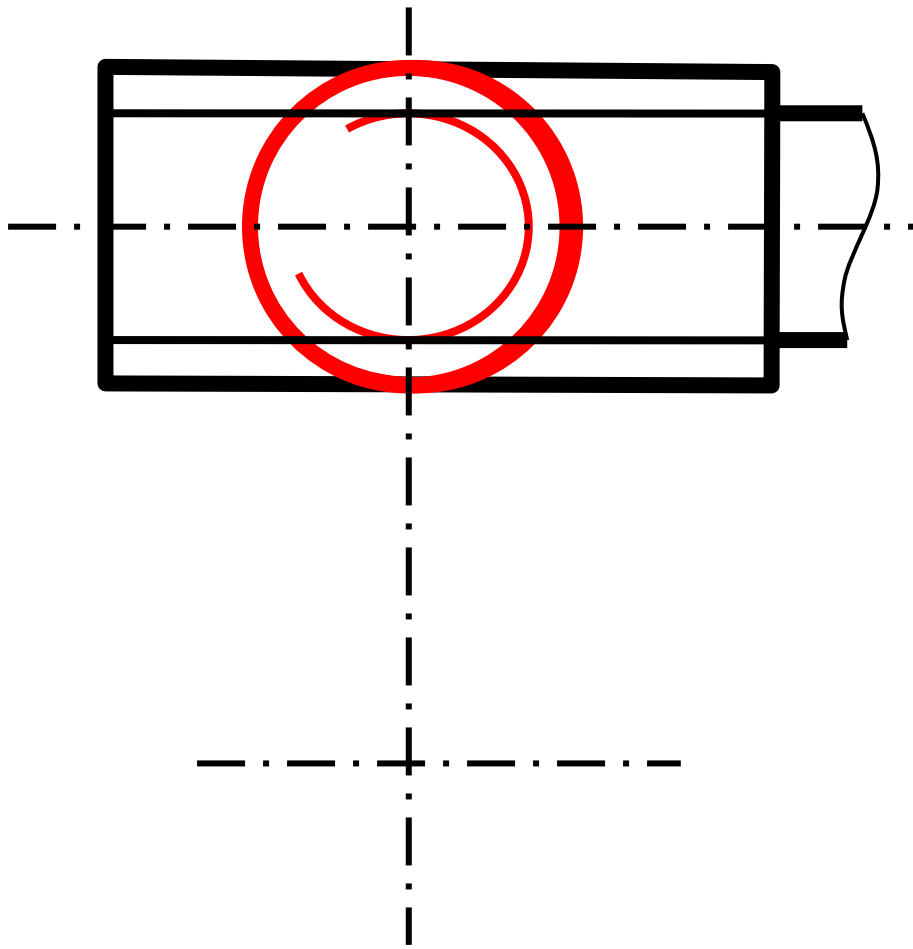


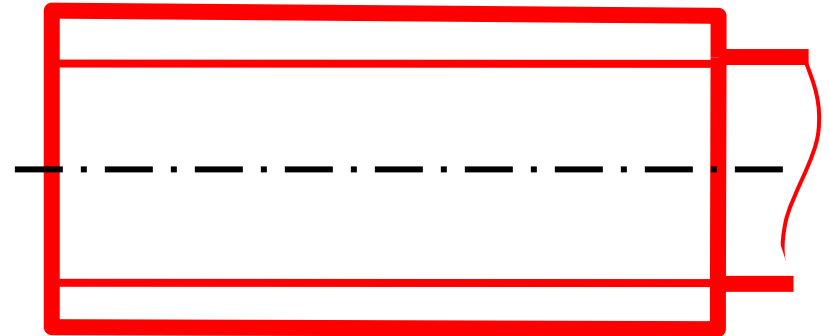
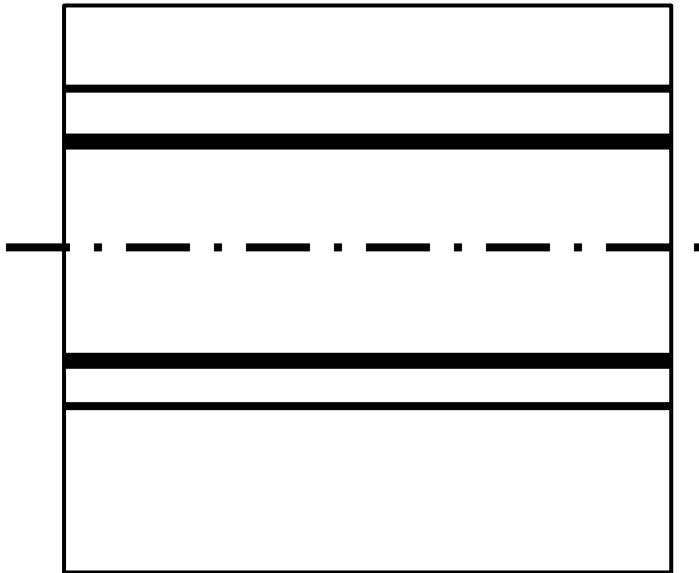
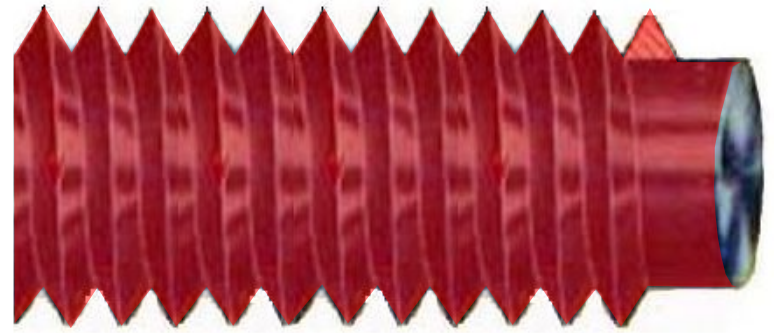
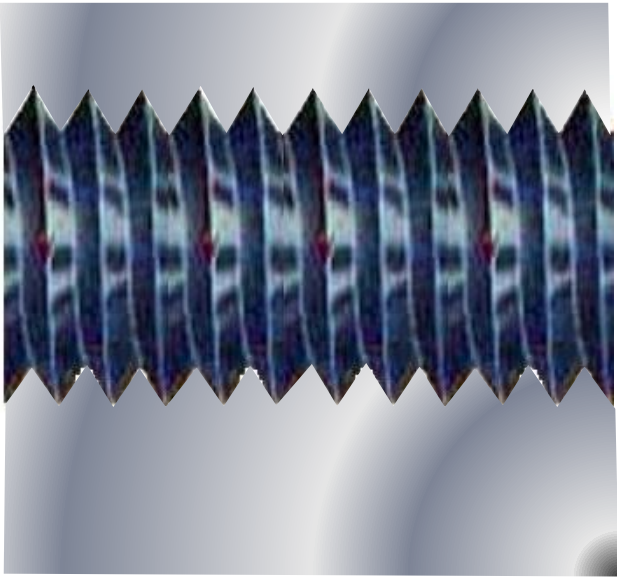
D – наружный диаметр;
 d – внутренний диаметр;
 P – шаг;

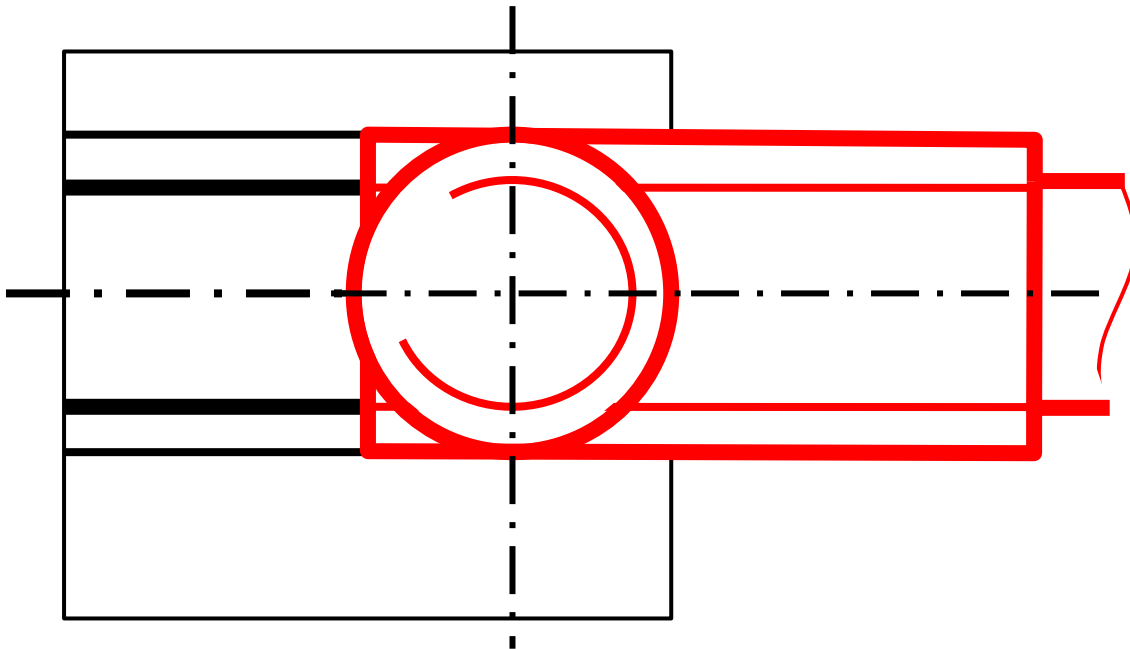
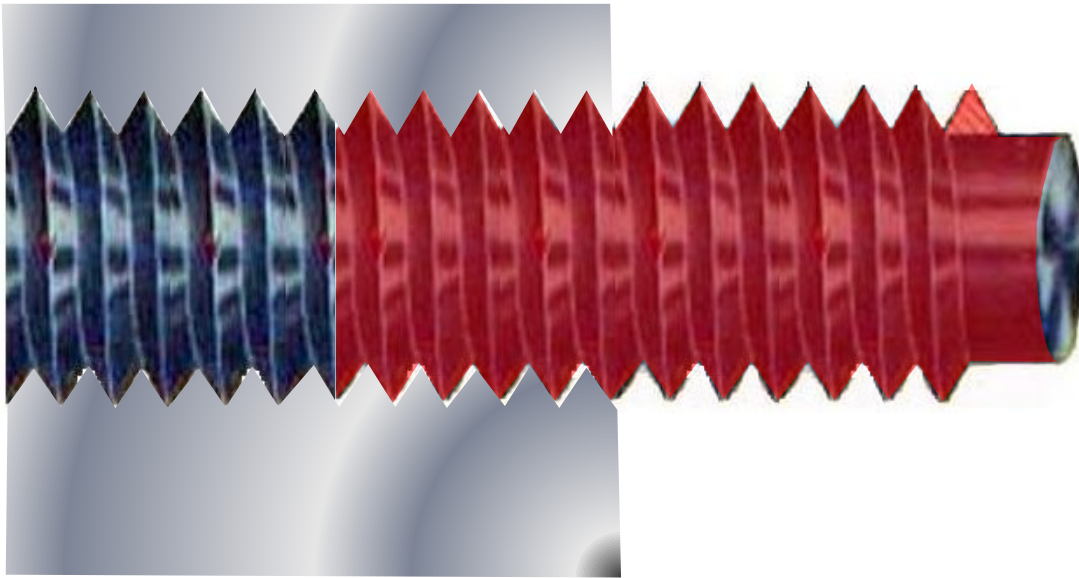
Изображение резьбы



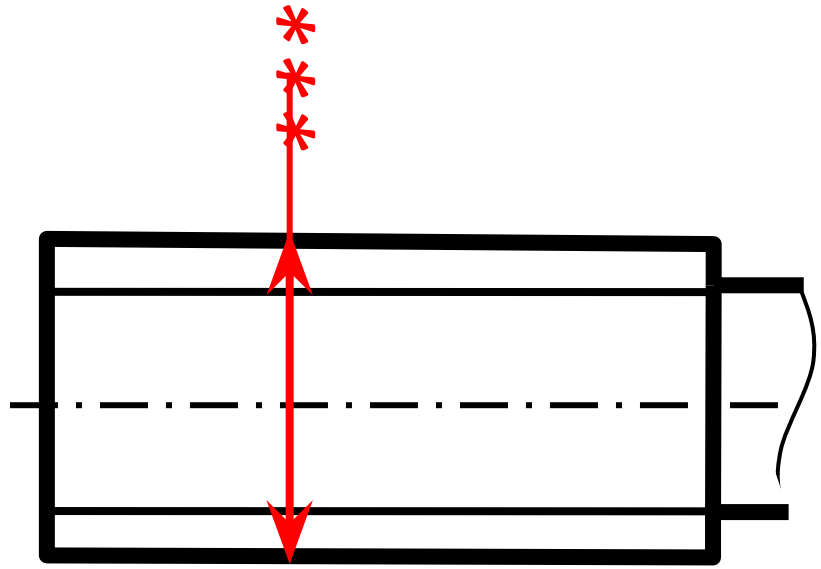
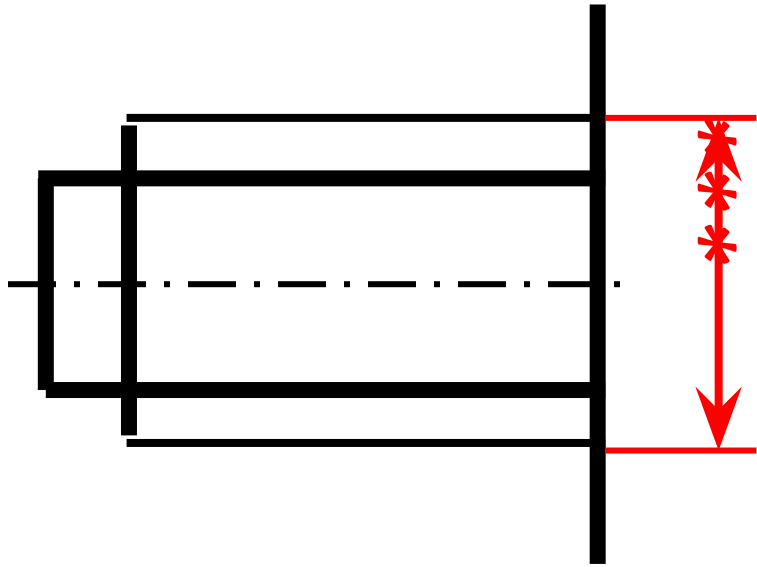








Обозначение резьбы



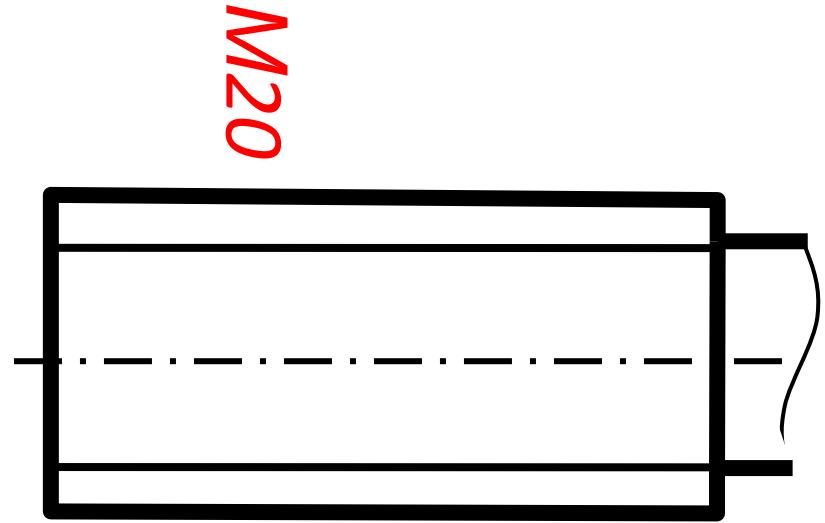
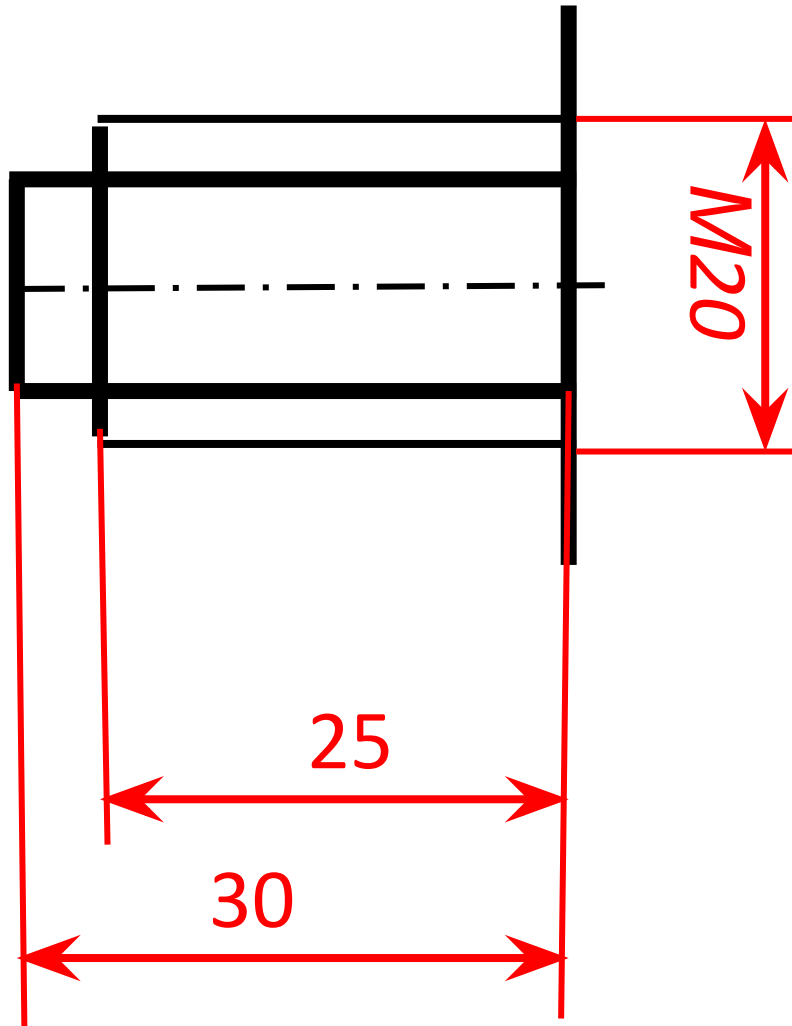
M20 × 3(B 1,5) LH

Метрическая;

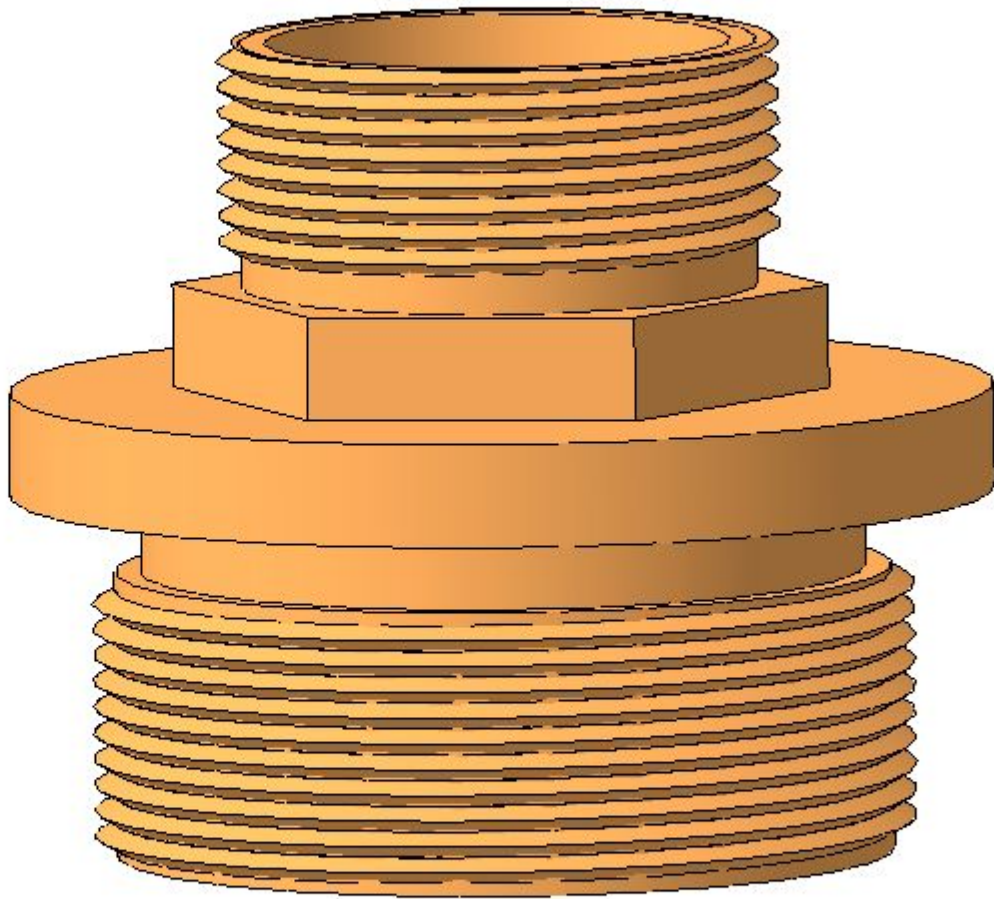
Номинальный диаметр 20мм;

~~Шаг резьбы 1,5мм (шаг 1,5мм) однозаходная;~~²³

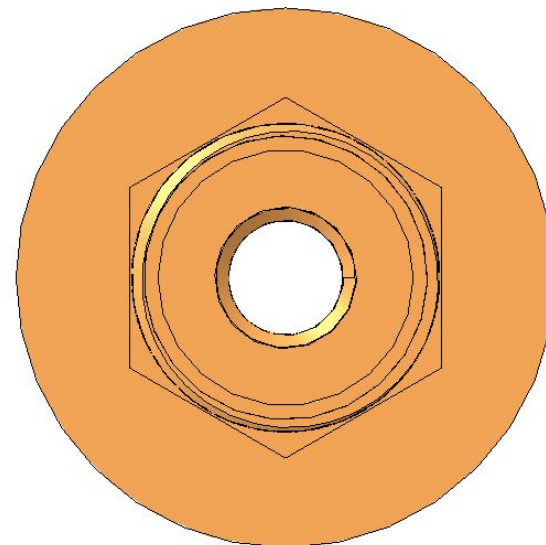
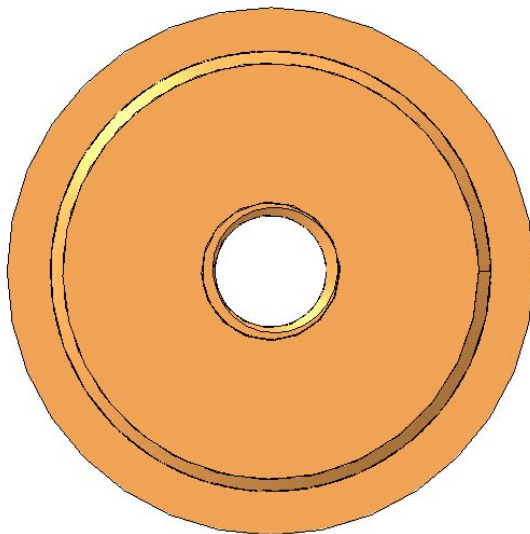
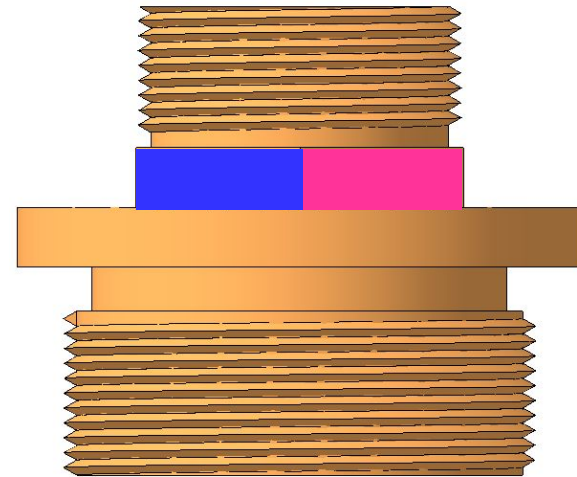
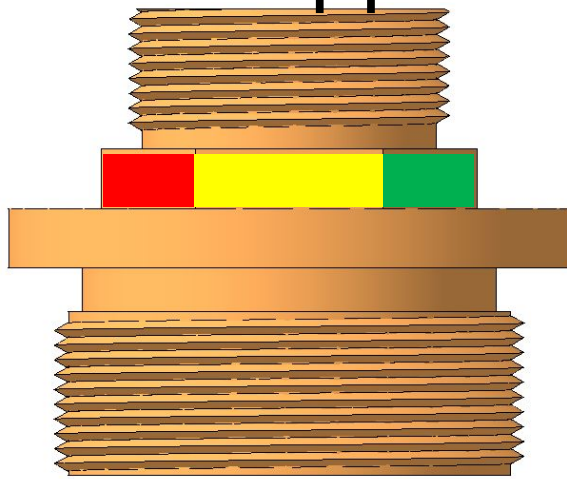
Направление – левая.

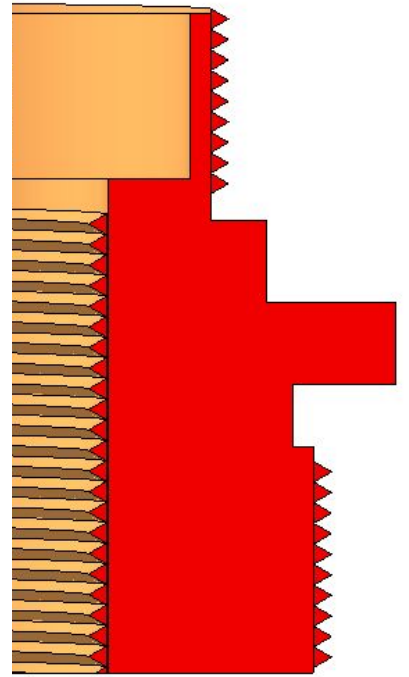
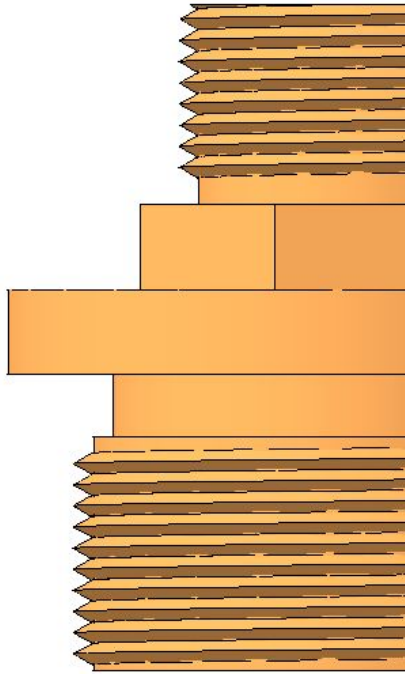


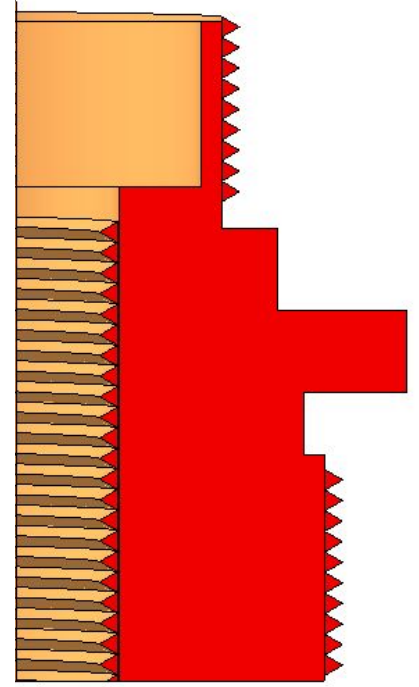
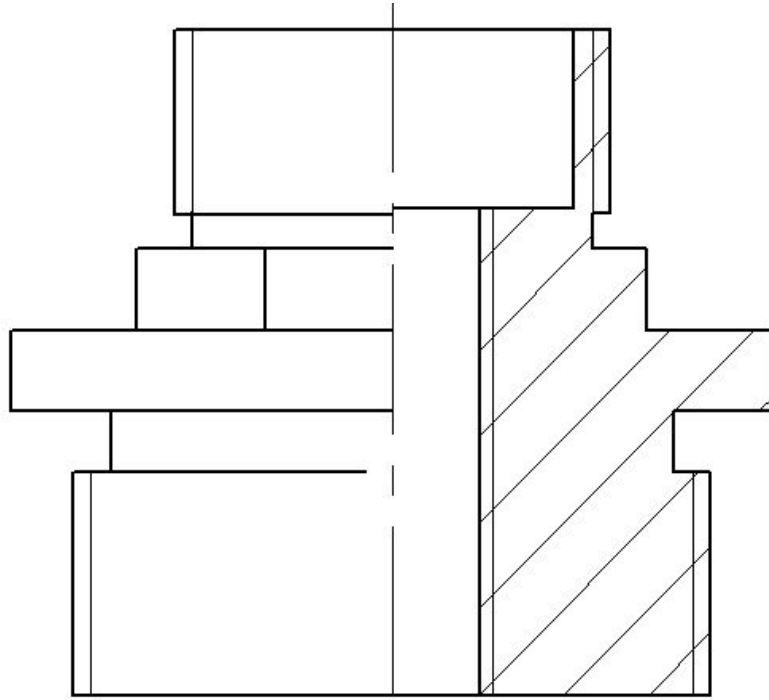
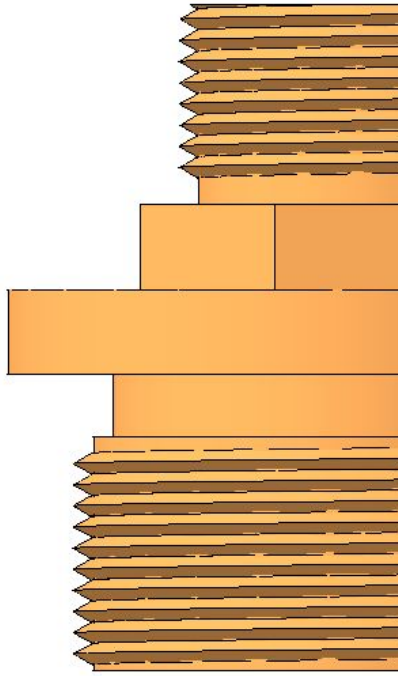
ЭСКИЗ ДЕТАЛИ

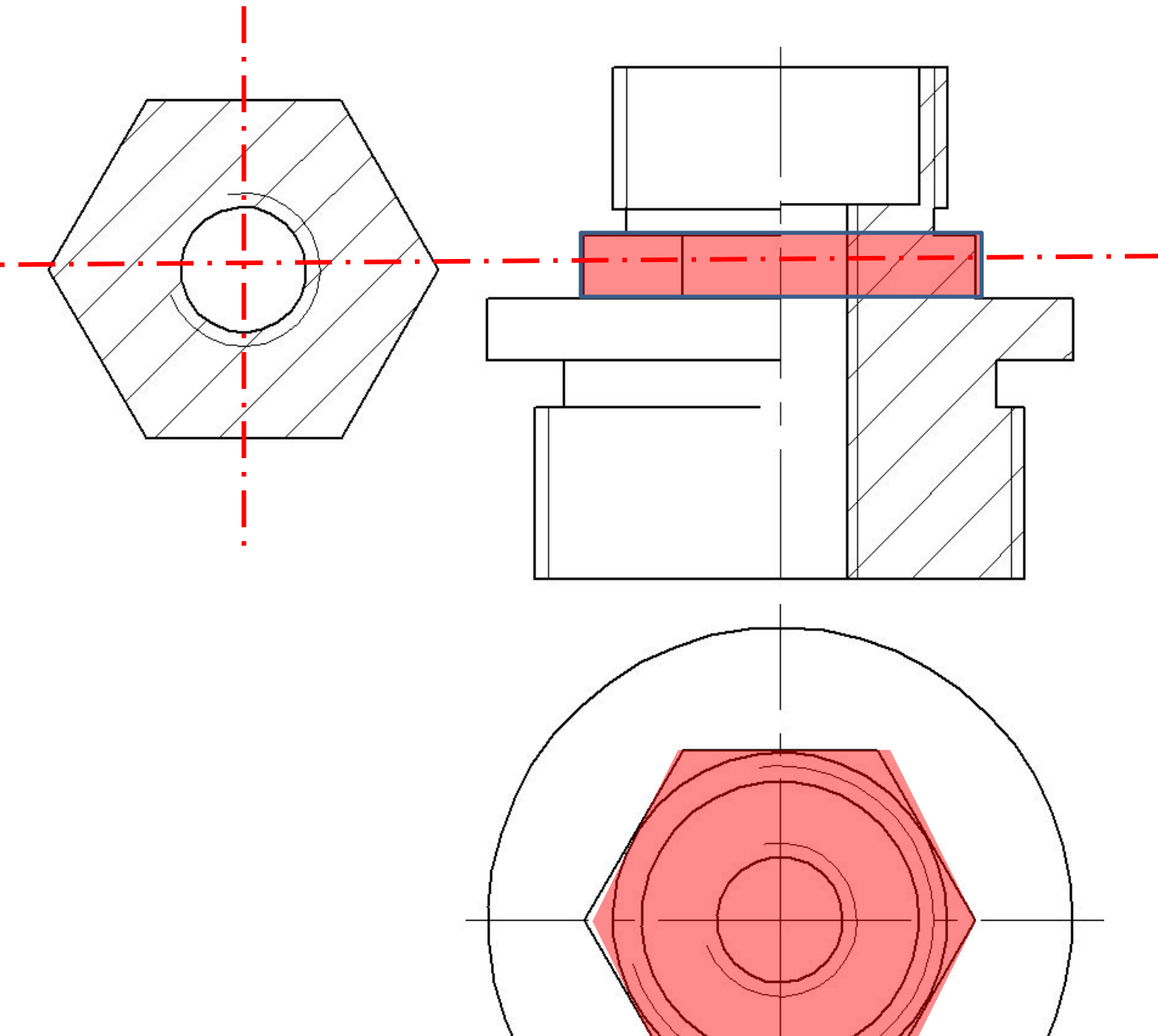


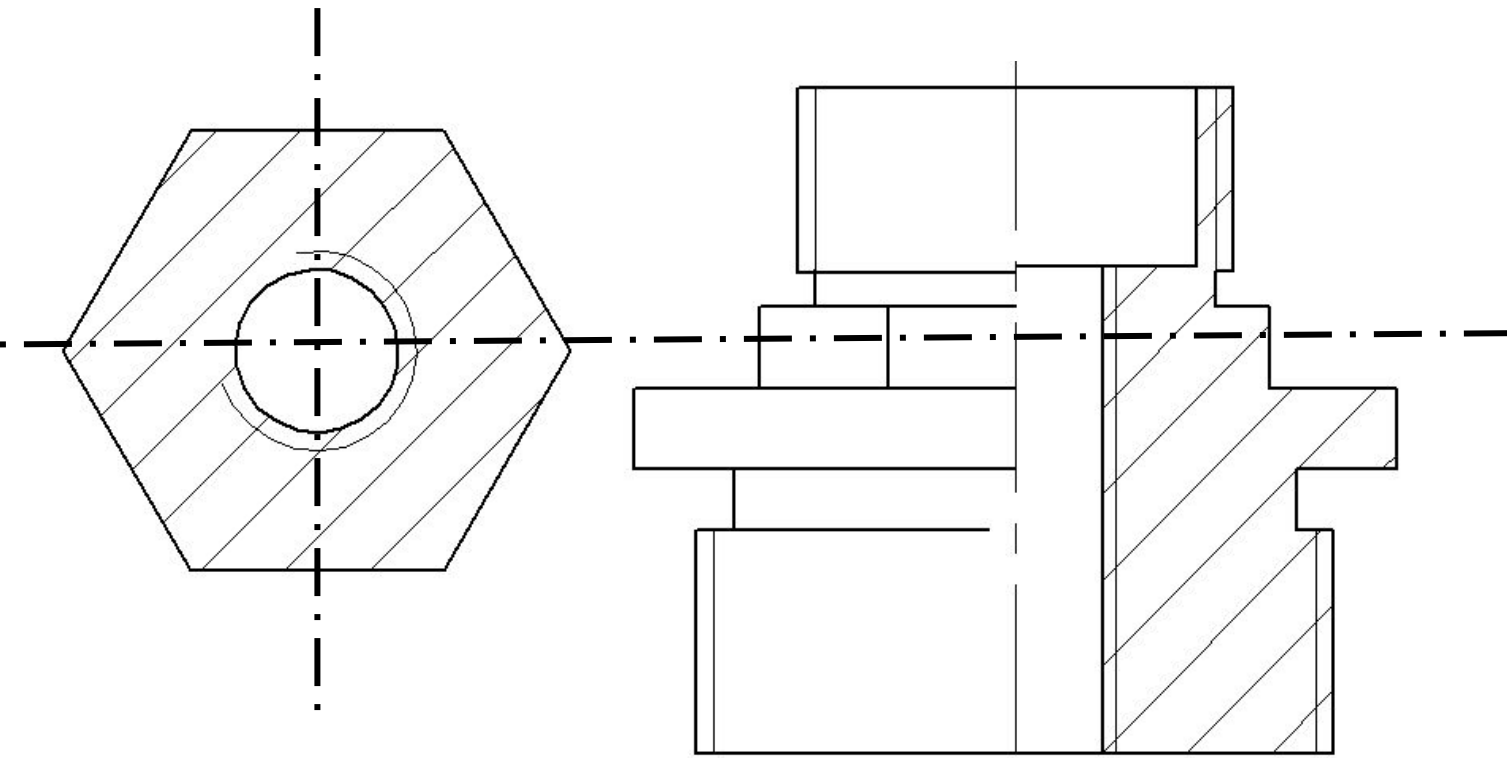
Выбор главного вида

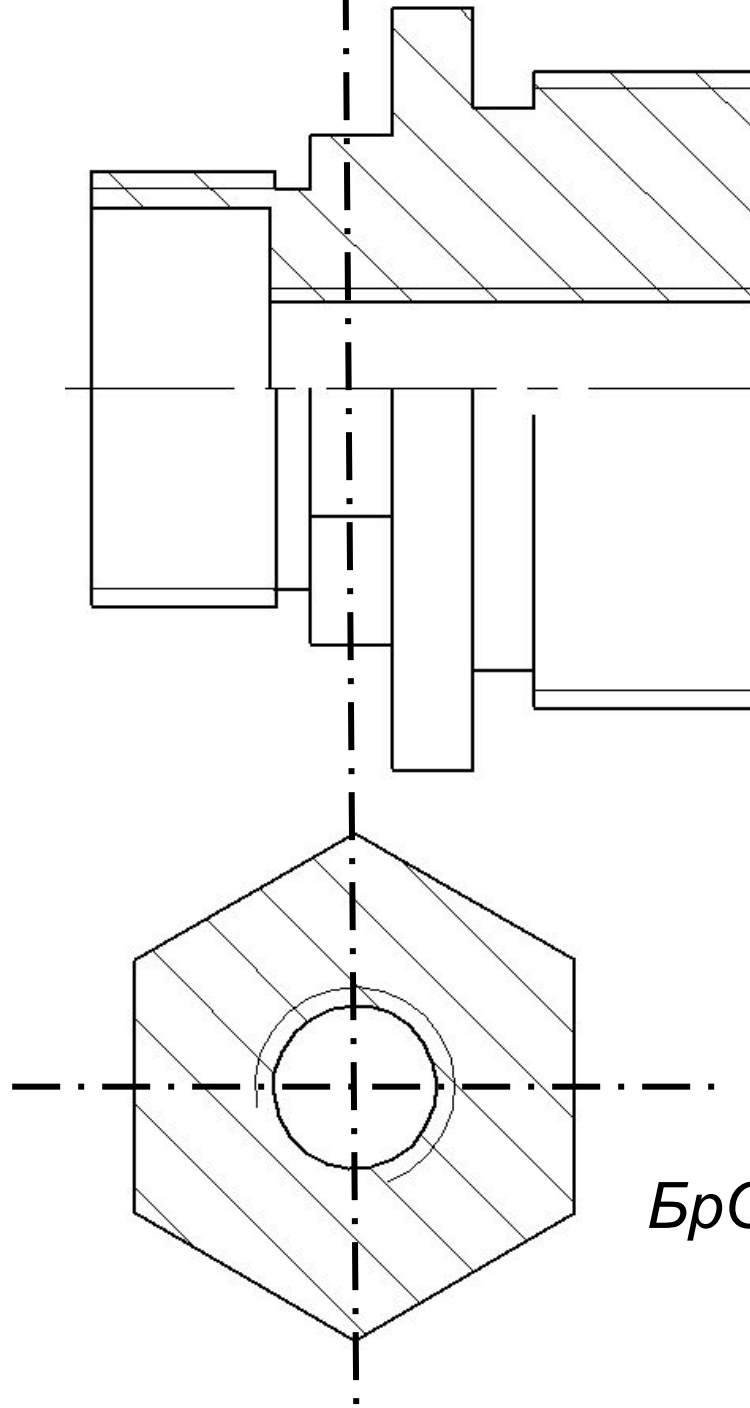










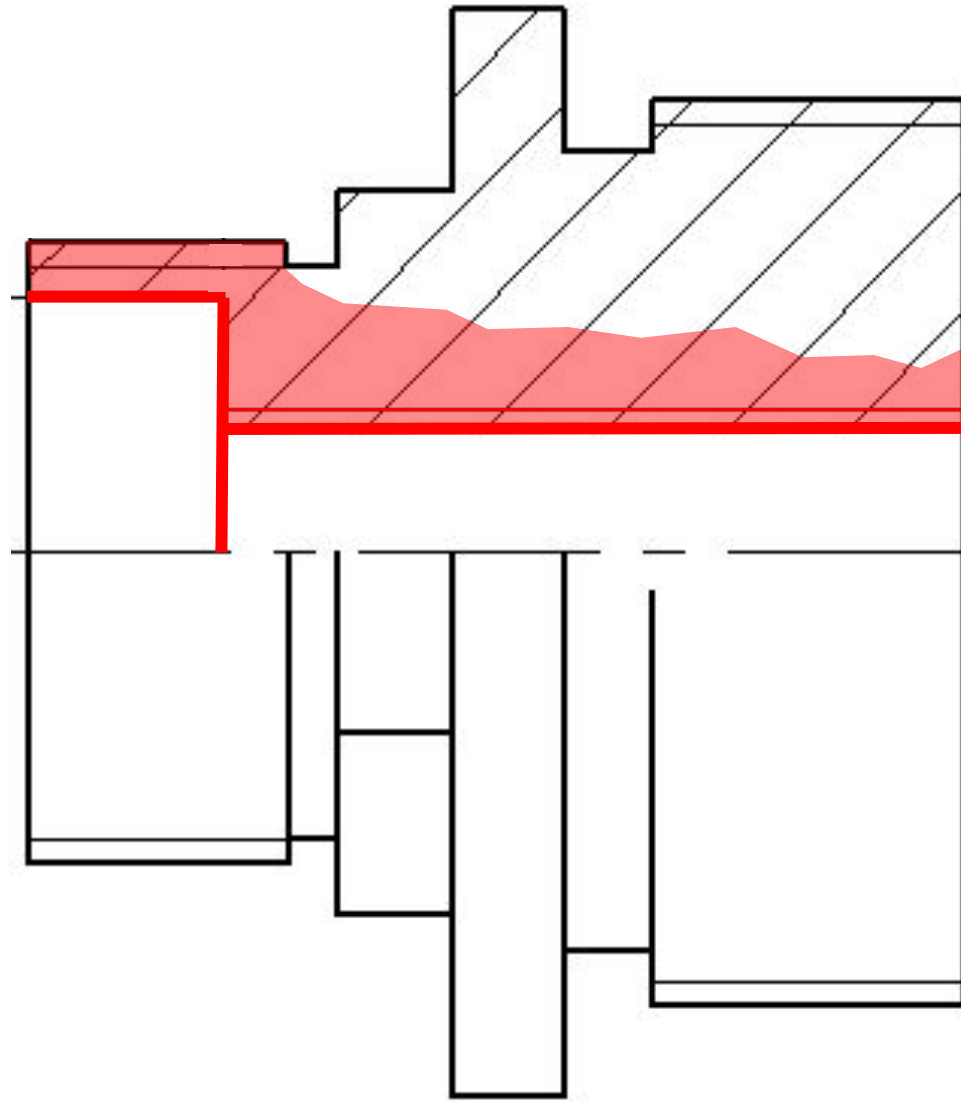


Крышка

БрО5Ц5С5 ГОСТ 613-88

Простановка размеров

Размеры внутренней формы



Простановка размеров

Размеры наружной формы

