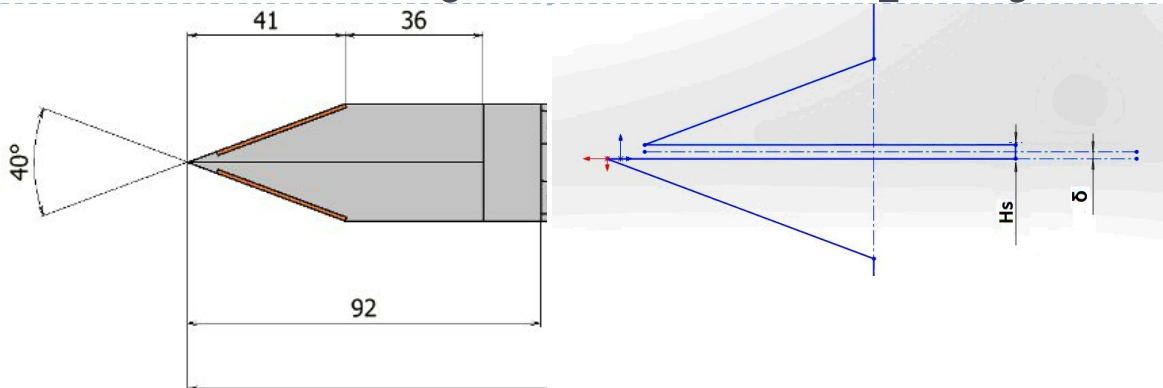


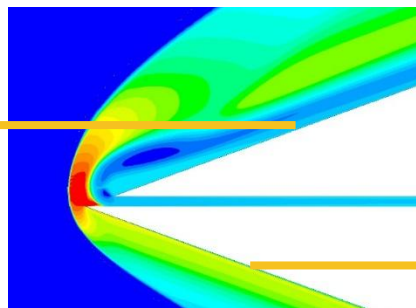
# Клин с выдувом навстречу потоку



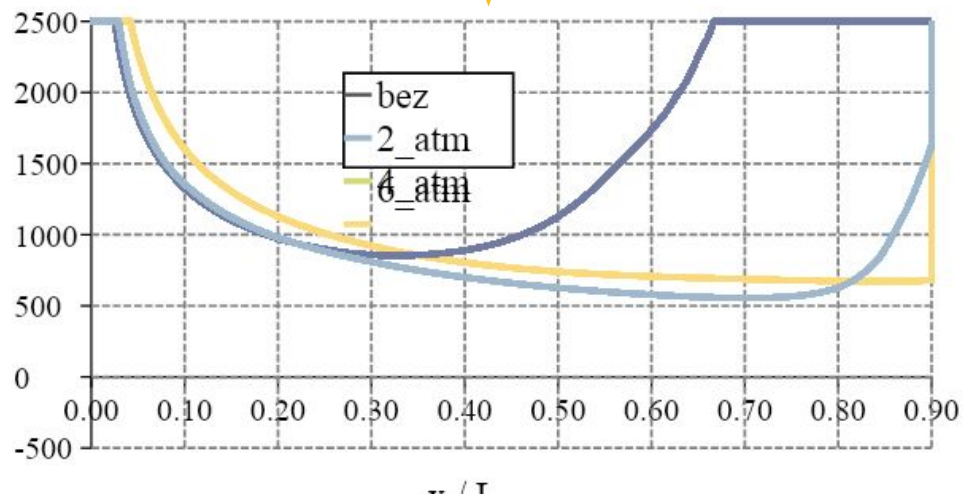
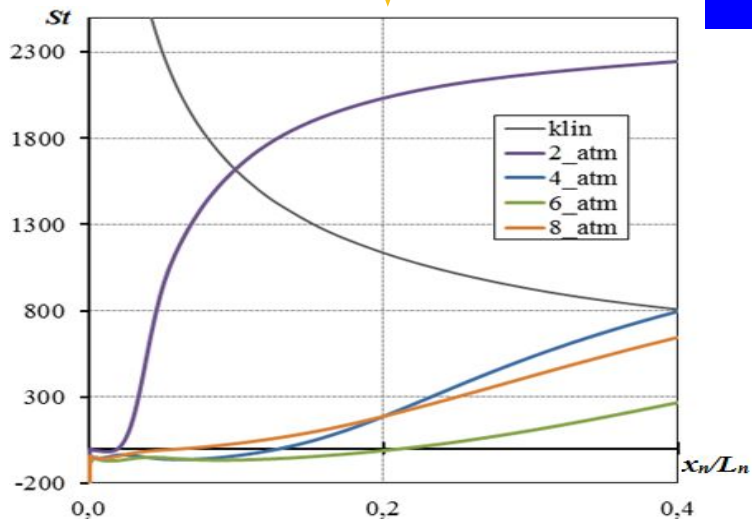
$M_\infty = 5$   
 $T_0 = 500 \text{ K}$   
 $T_\infty = 133.3 \text{ K}$   
 $p_0 = 50 \text{ атм}$   
 $T_w = 288 \text{ K}$   
 $\gamma = 1.4; \text{Pr} = 0.72$   
 $Tu = 1\%$

2D постановка

Расчётная сетка: 0.25 млн



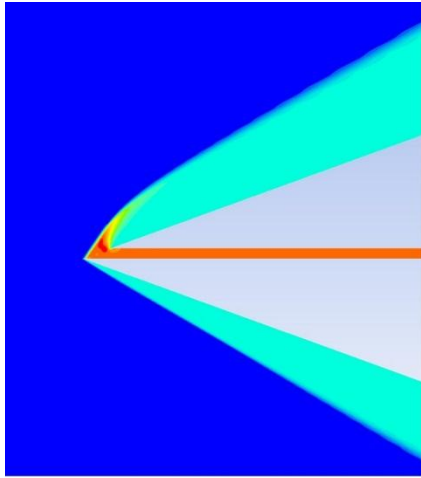
**Выдув**  
 $H_s = 0.2 \text{ мм}; \delta = 0.5H_s$   
 $p_{0,inj} = 2; 4; 6; 8 \text{ атм}$   
 $T_{0,inj} = 290 \text{ K}$



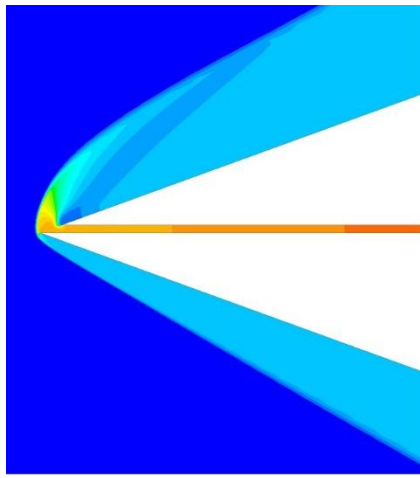
|

# Поля обтекания клина с выдувом

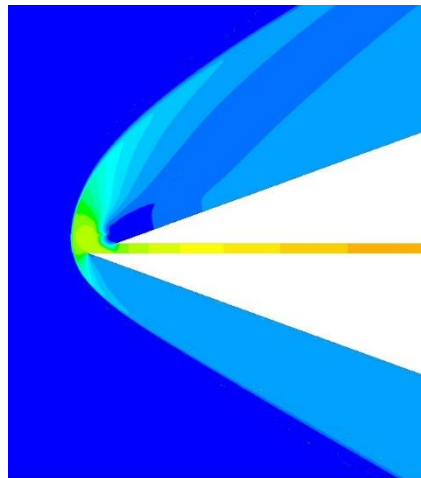
P



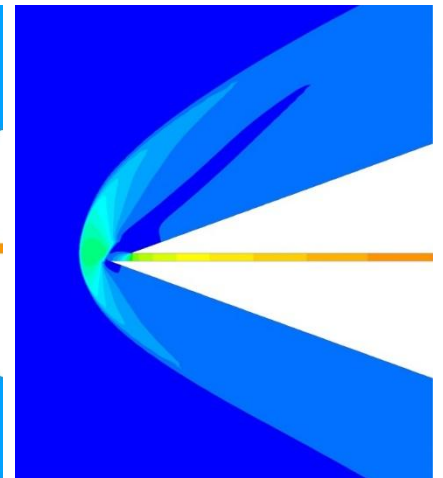
$P_0 = 2$  атм



$P_0 = 4$  атм



$P_0 = 6$  атм



$P_0 = 8$  атм

T

