

Mike Shinoda Art's

By Katty Shinoda





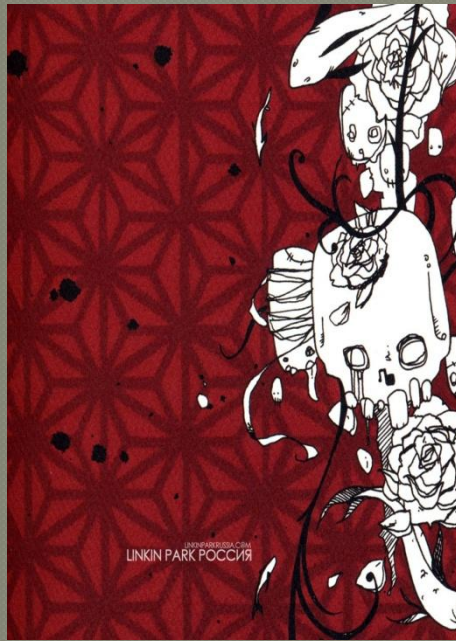
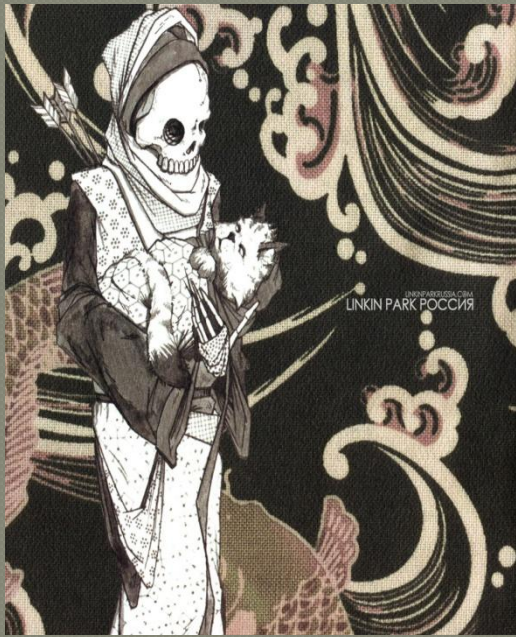
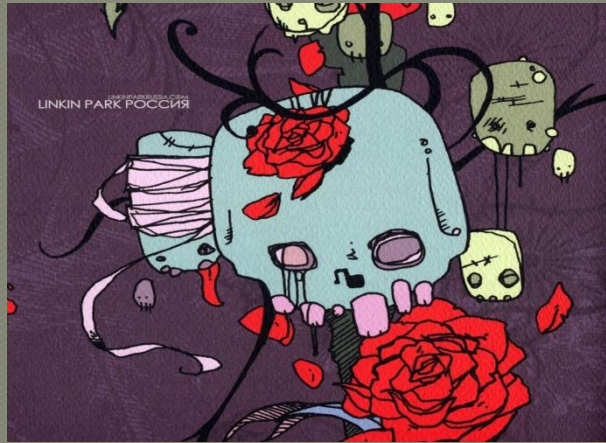


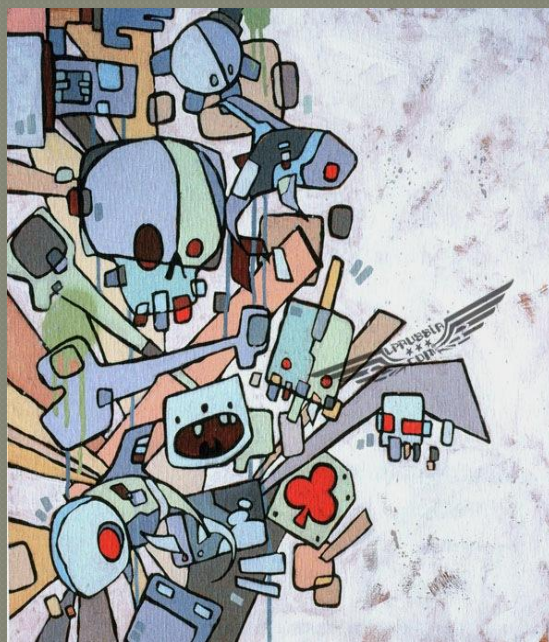
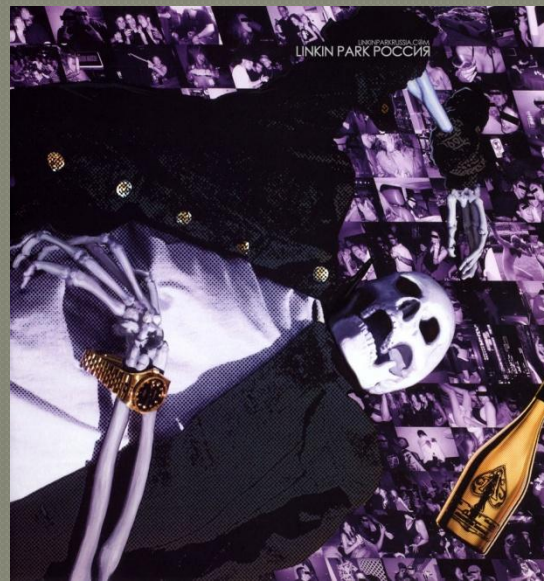


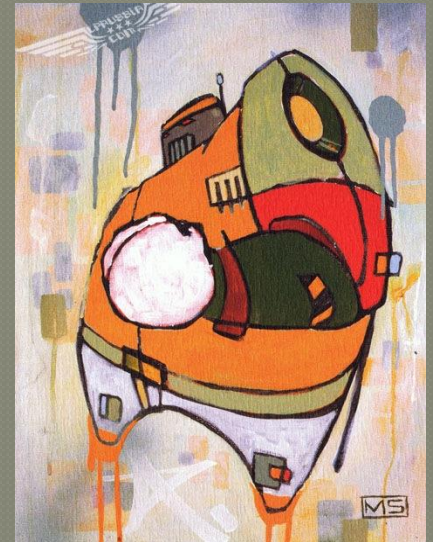
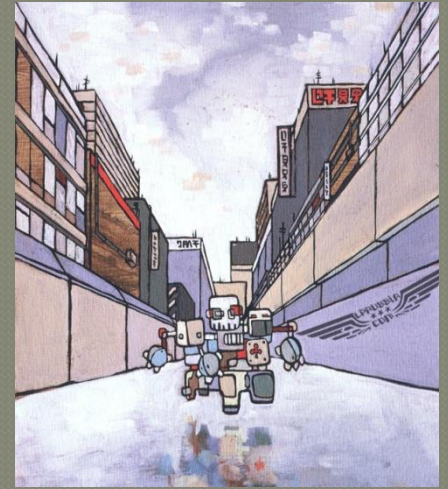


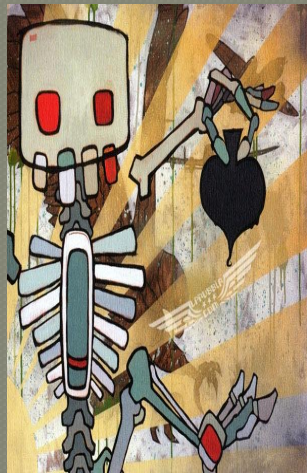
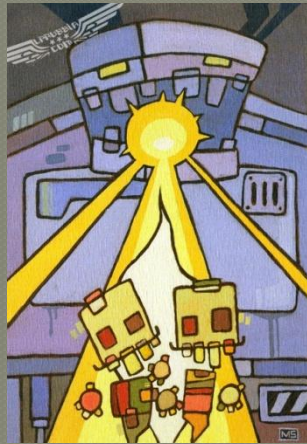
RAFU SHIMPO

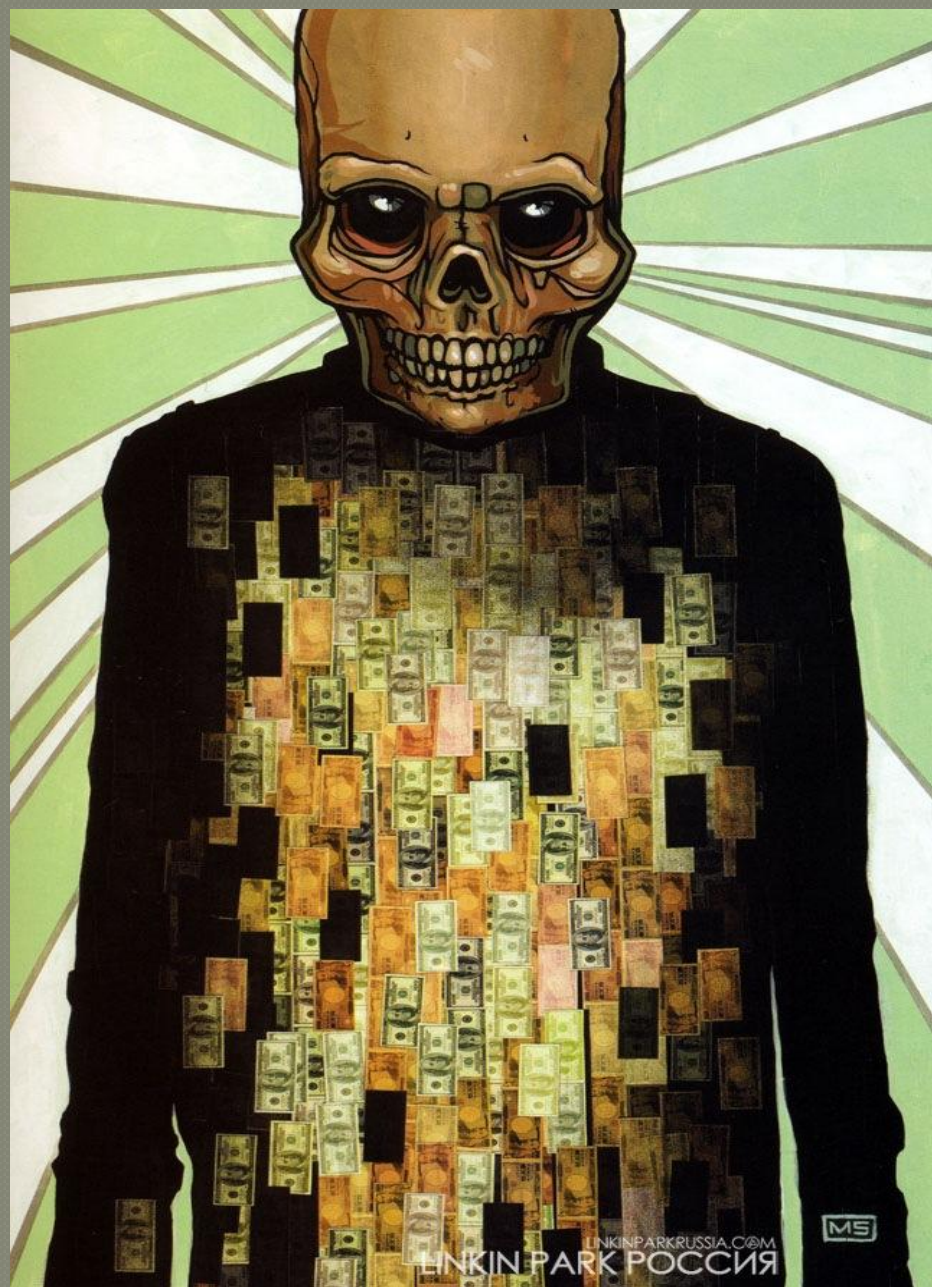










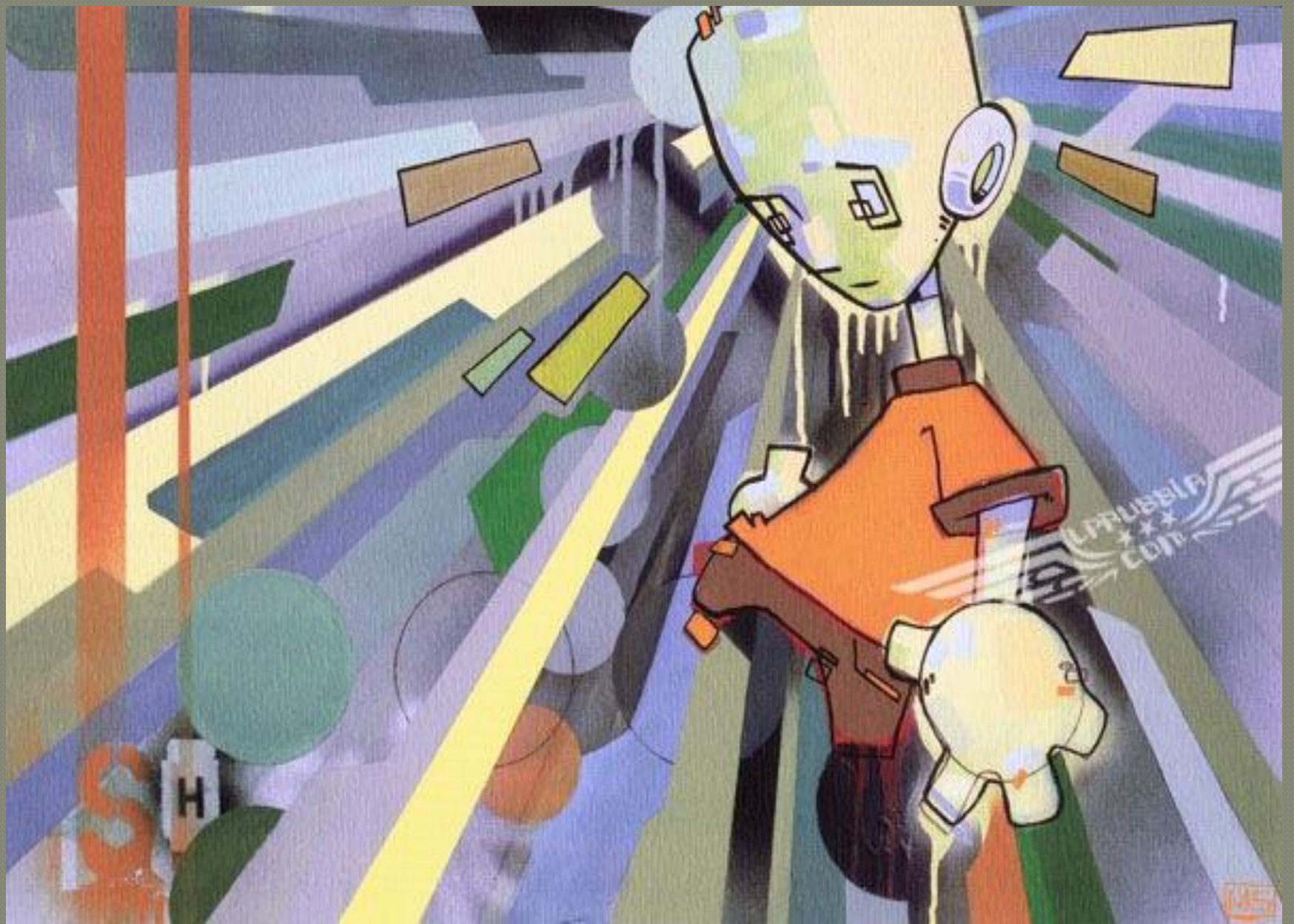




LINKINPARKRUSSIA.COM
LINKIN PARK РОССИЯ









Mike Stroud, March 2014. After exclusively for *Forbes*!



ART THERAPY
MIKE opens up about POST-TRAUMATIC'S video series

"I wanted the videos to have visuals that were close to personal as they could be... I didn't want anyone else working there; I didn't want anyone else holding a camera. So I shot stuff on my phone and edited it in Post-Cin."

"I wanted to be like when you're frustrated or angry or on a line at work and you have the other person in on the other end of the line with you, when they're making you very aware of, sometimes they're being mean, but there are other times when it's the ugliness that makes them powerful."



Mike Stroud, March 2014. After exclusively for *Forbes*!

