





John Heyduk, Jan Palach Memorial, 1981/2016



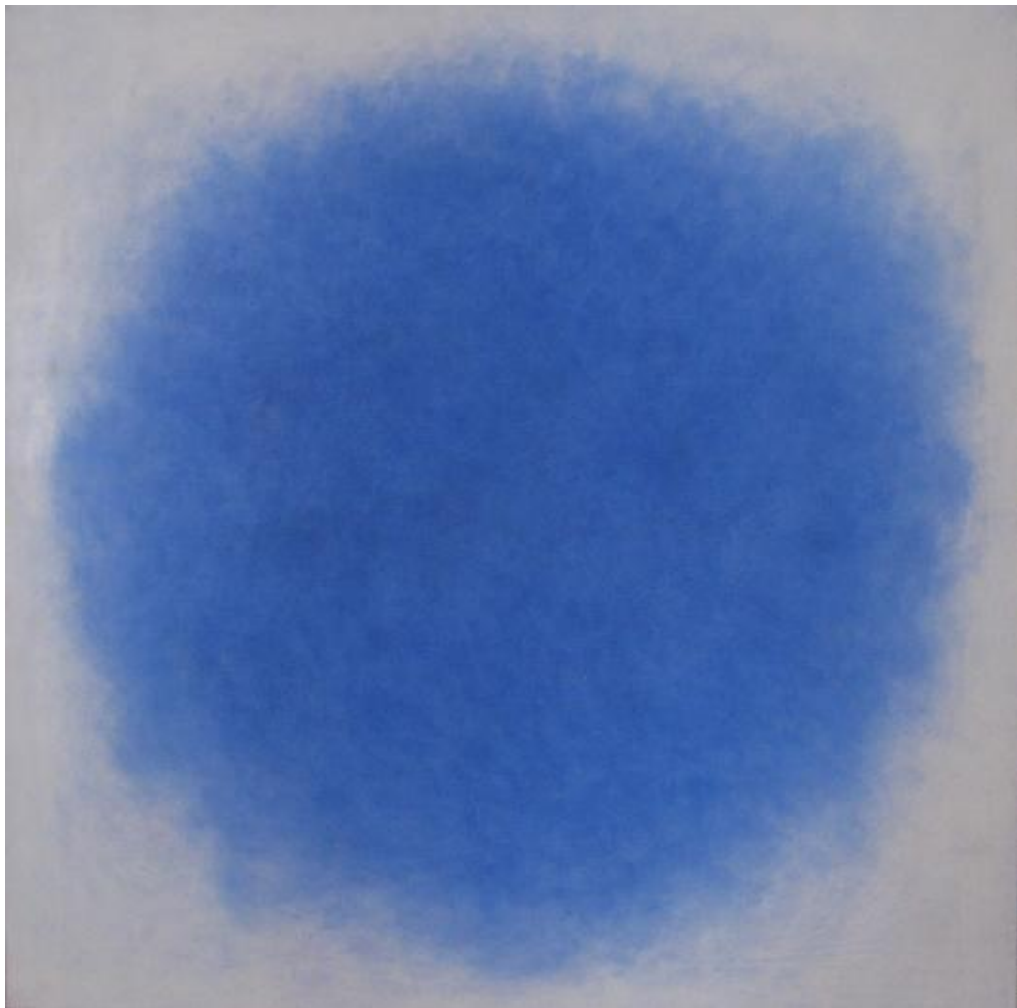




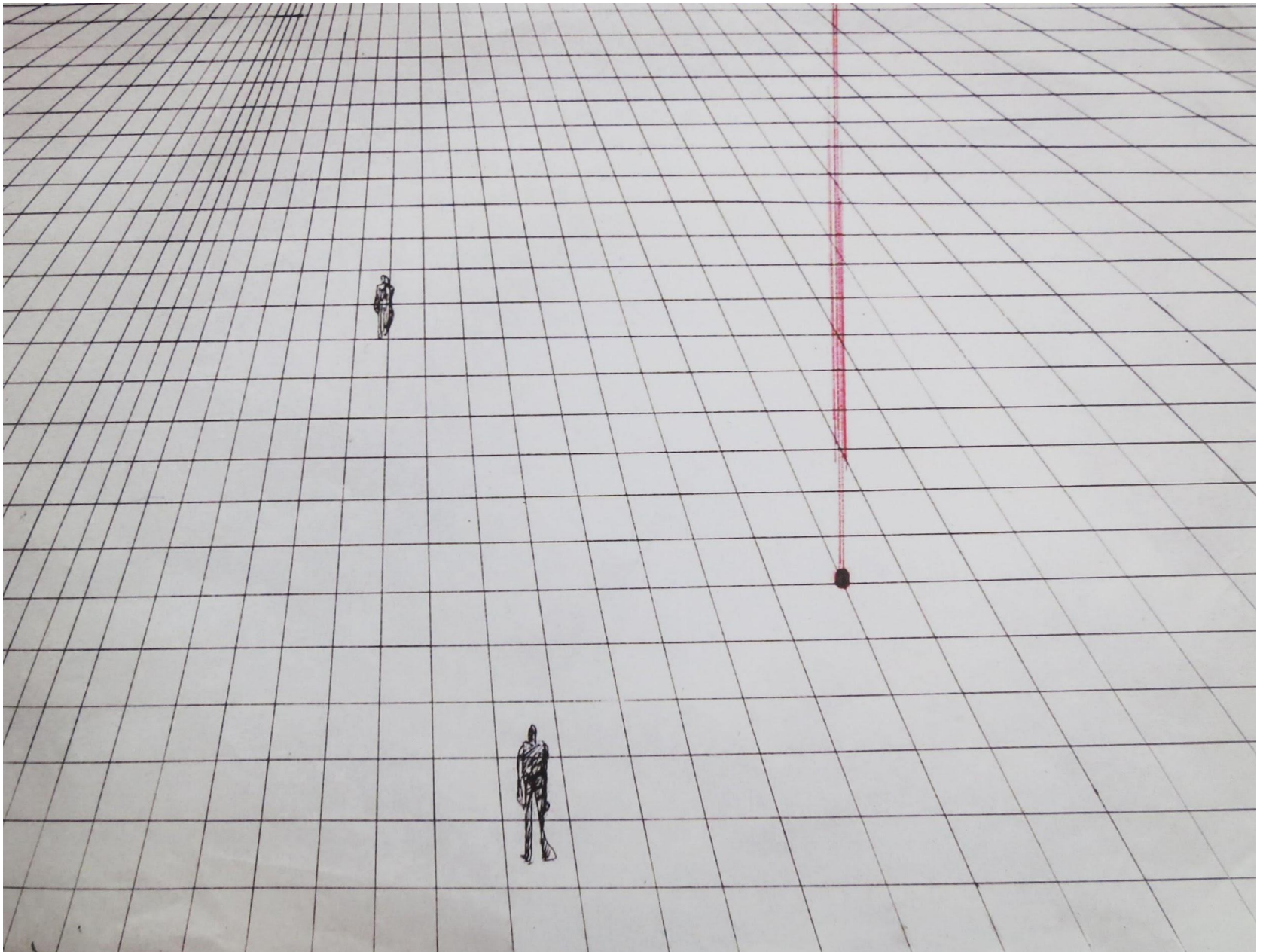
Miroslav Hucek, Burial of Jan Palach, 1969



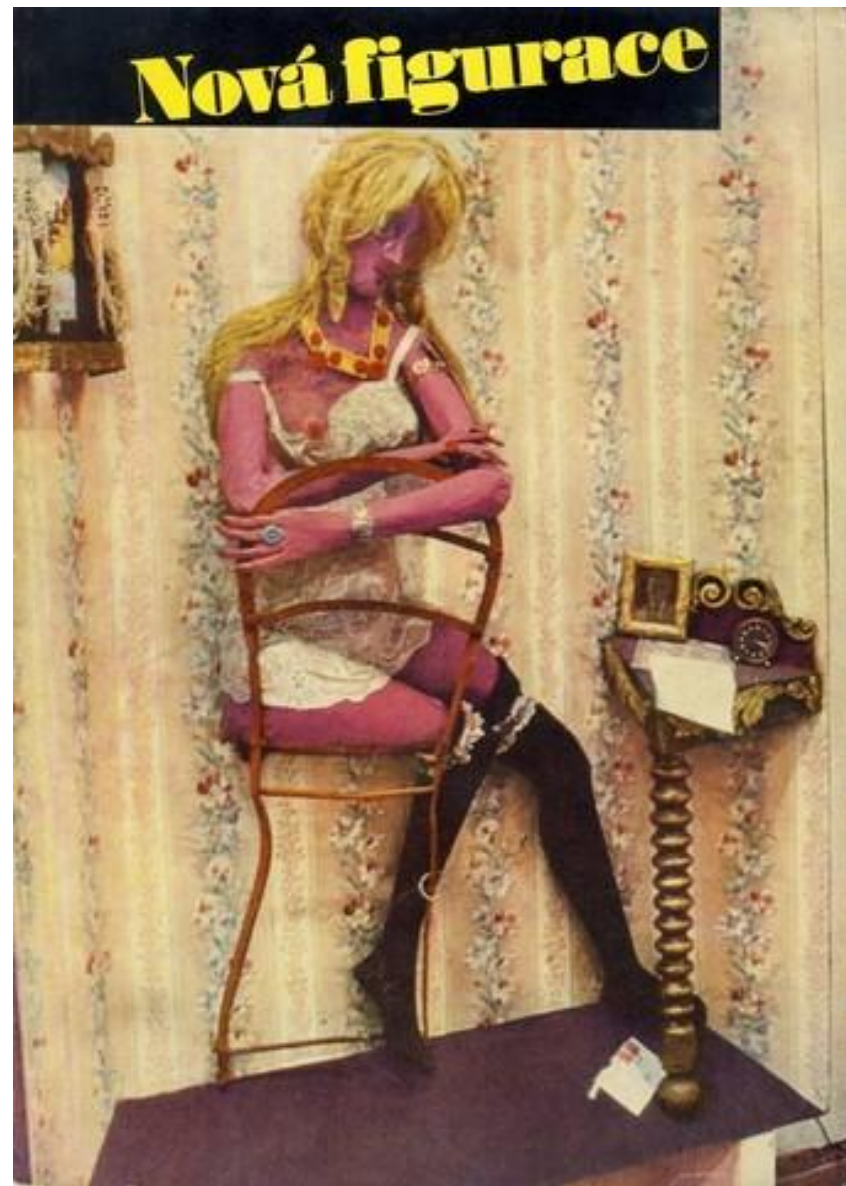
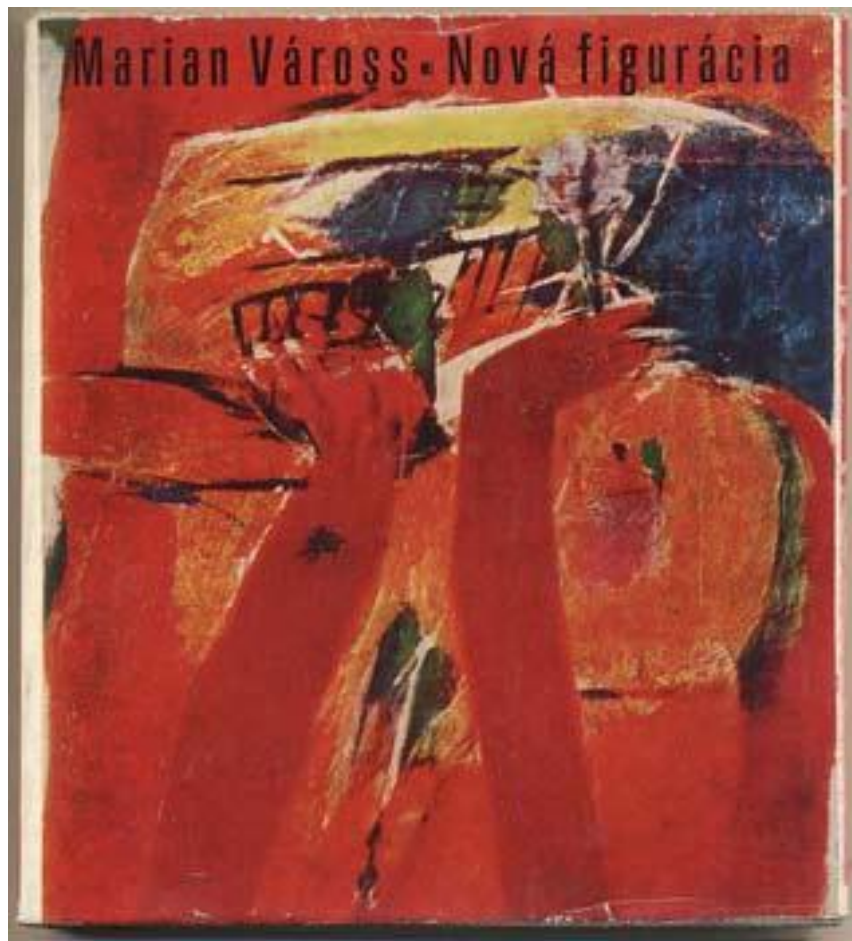
Olbram Zoubek, Golden Jan, 1969



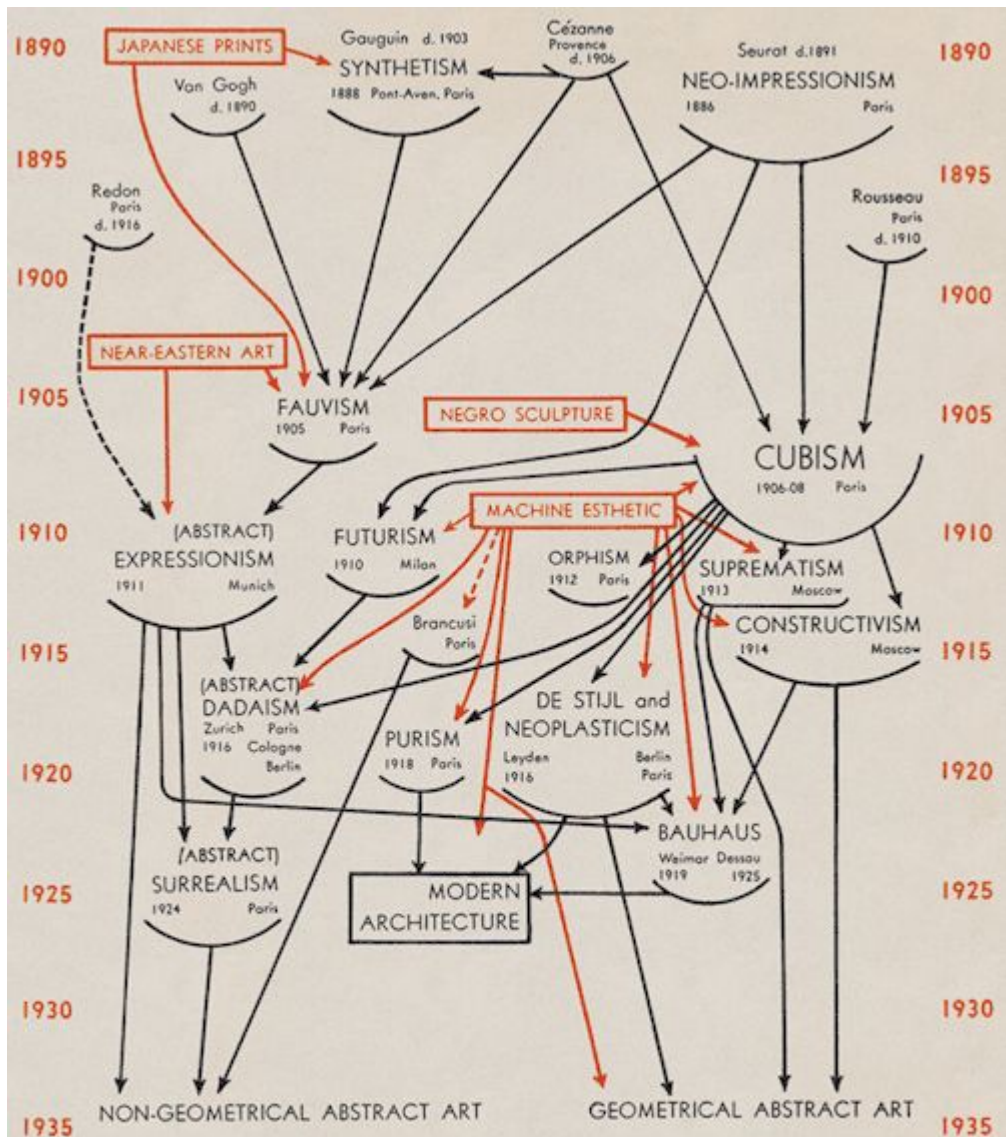
Václav Boštík, Blue for Palach, 1969



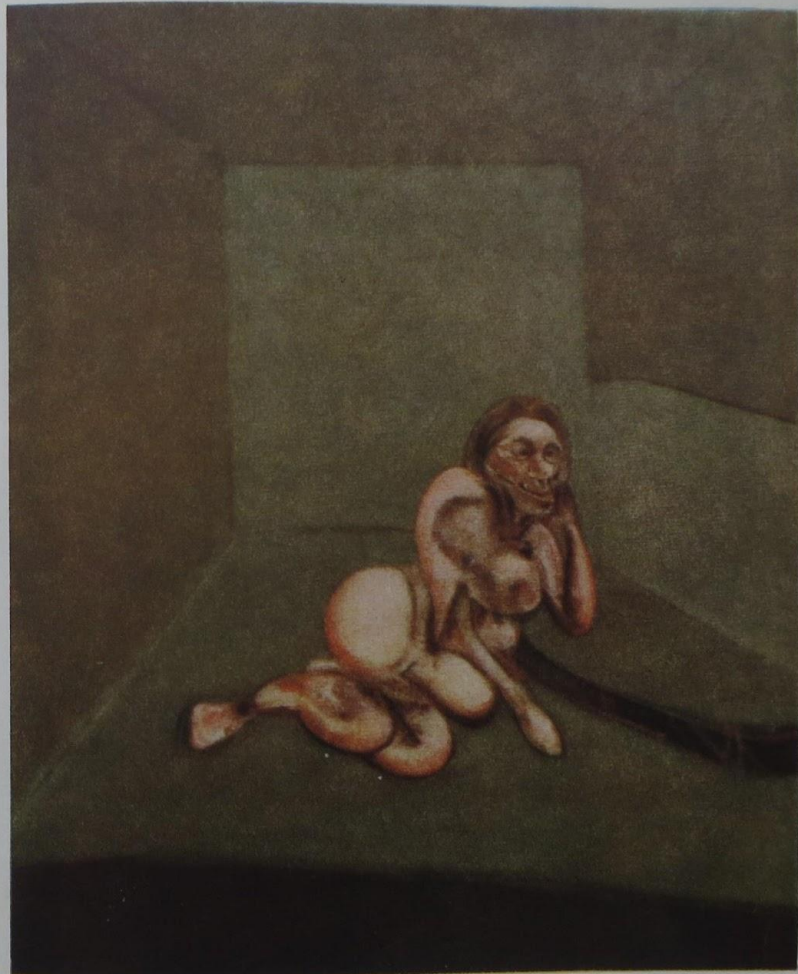
Václav Cigler, Design for a landmark commemorating Jan Palach, 1969



M. Várošs, New Figuration, 1968 – L. Novák, New Figuration, 1968



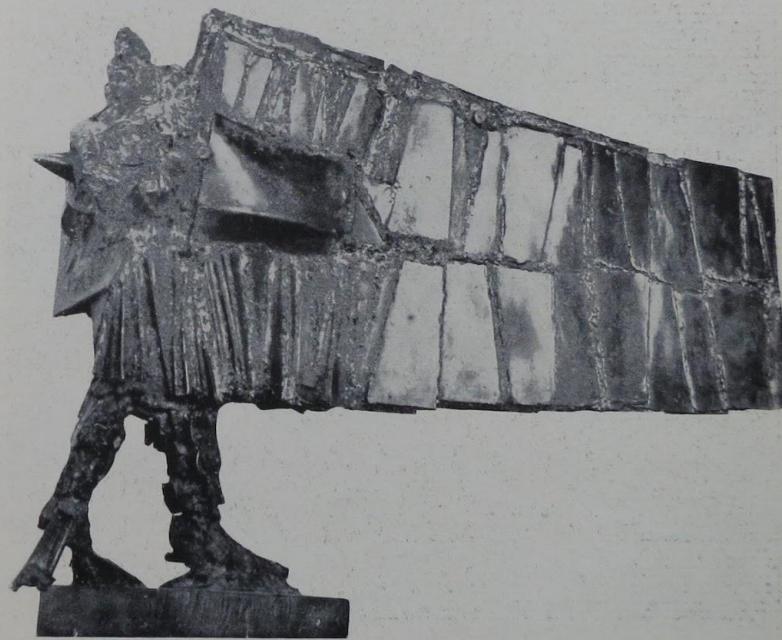
CUBISM AND ABSTRACT ART



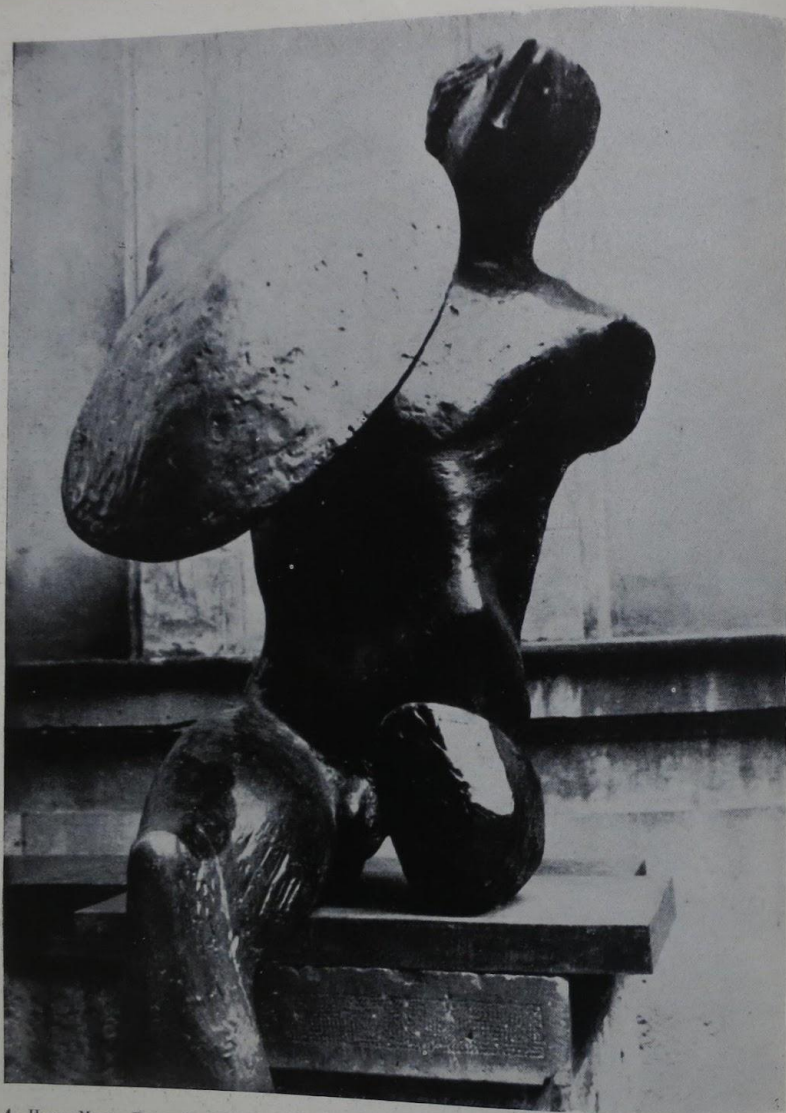
1 Francis Bacon, Ležící akt, 1961



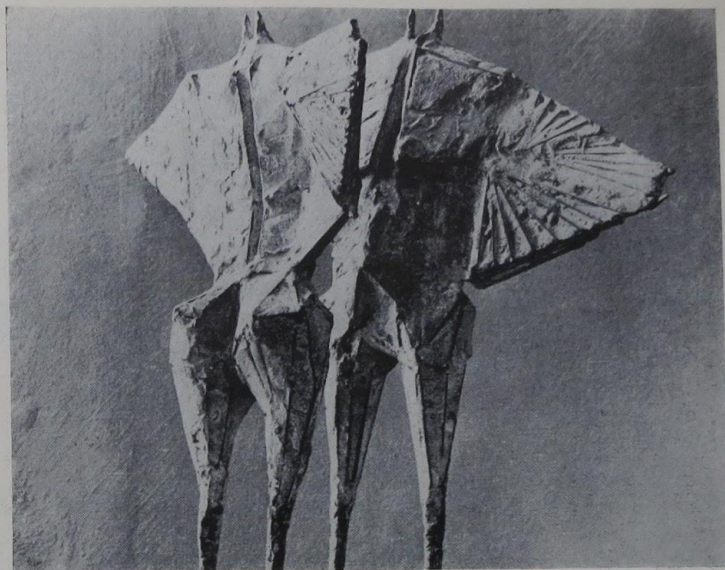
2 Alberto Giacometti, Tři postavy, asi 1960



3 César Baldaccini, Kráčející člověk, asi 1960



4 Henry Moore, Bojovník, asi 1953-4



5 Lynn Chadwick, Postavy ve větru, asi 1955
6 Marcello Mascherini, Odpočívající bojovník, 1961

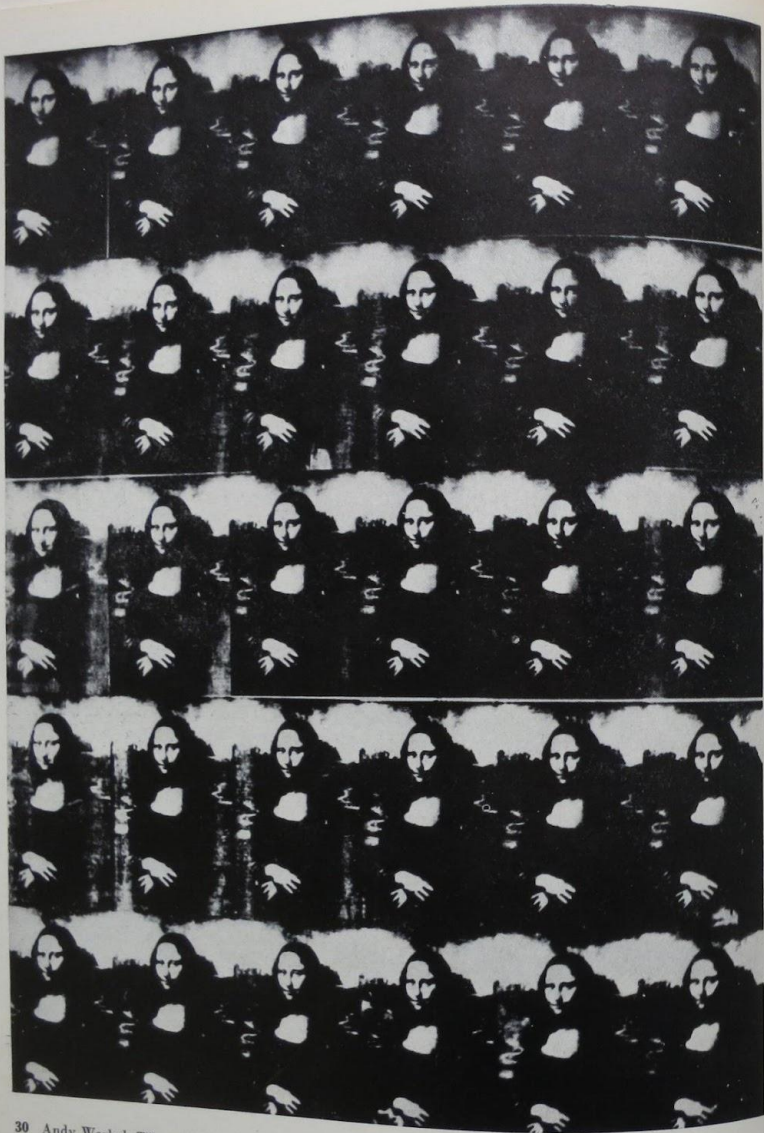




26 Martial Raysse. Obraz ve francouzském stylu, asi 1966



27 Jacques Monory, Ariane, pocta Gesaldovi, asi 1966

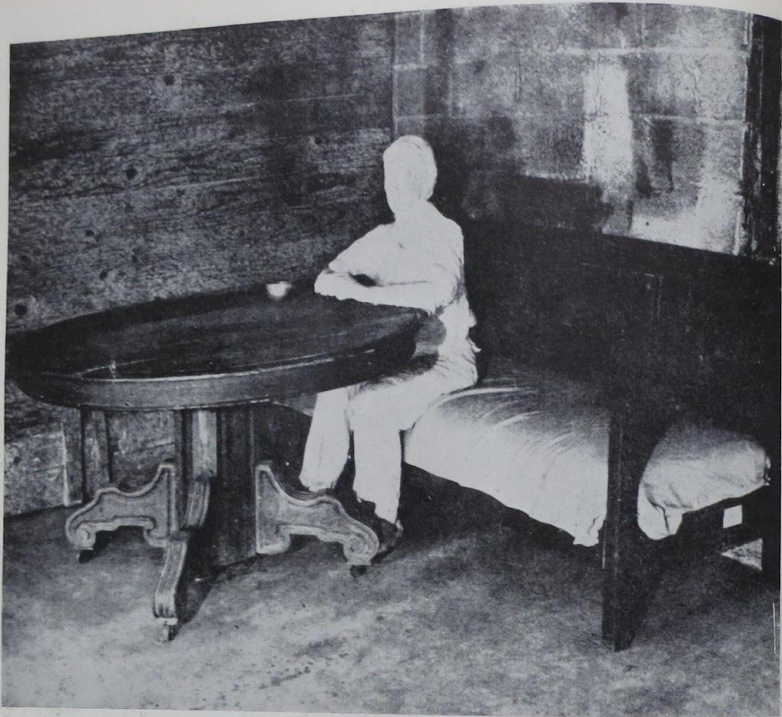


21

30 Andy Warhol, Třicet je lepší než jedna, 1963



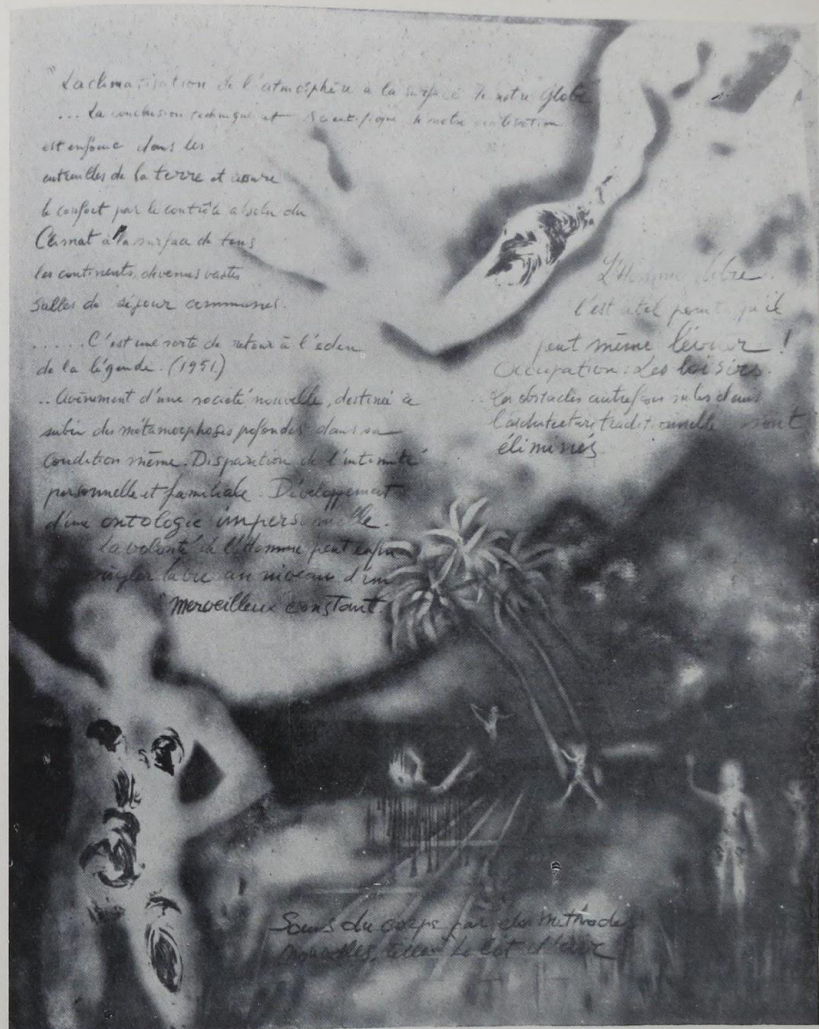
31 Lary Rivers, Francouzské peníze, 1966



33 George Segal, Žena v kuchyni, 1964



32 George Segal, Žena, myjící si nohu v umyvadle, asi 1965



34 Yves Klein, Ant 102, vzdušná architektura, 1961

"La climatization de l'atmosphère à la surface de notre globe
 ... la conclusion redoublée et sans cesse renouvelée
 est enfouie dans les
 entrailles de la terre et assure
 le confort par le contrôle absolu du
 climat à la surface de tous
 les continents, chémas vastes
 Salles de séjour communes.

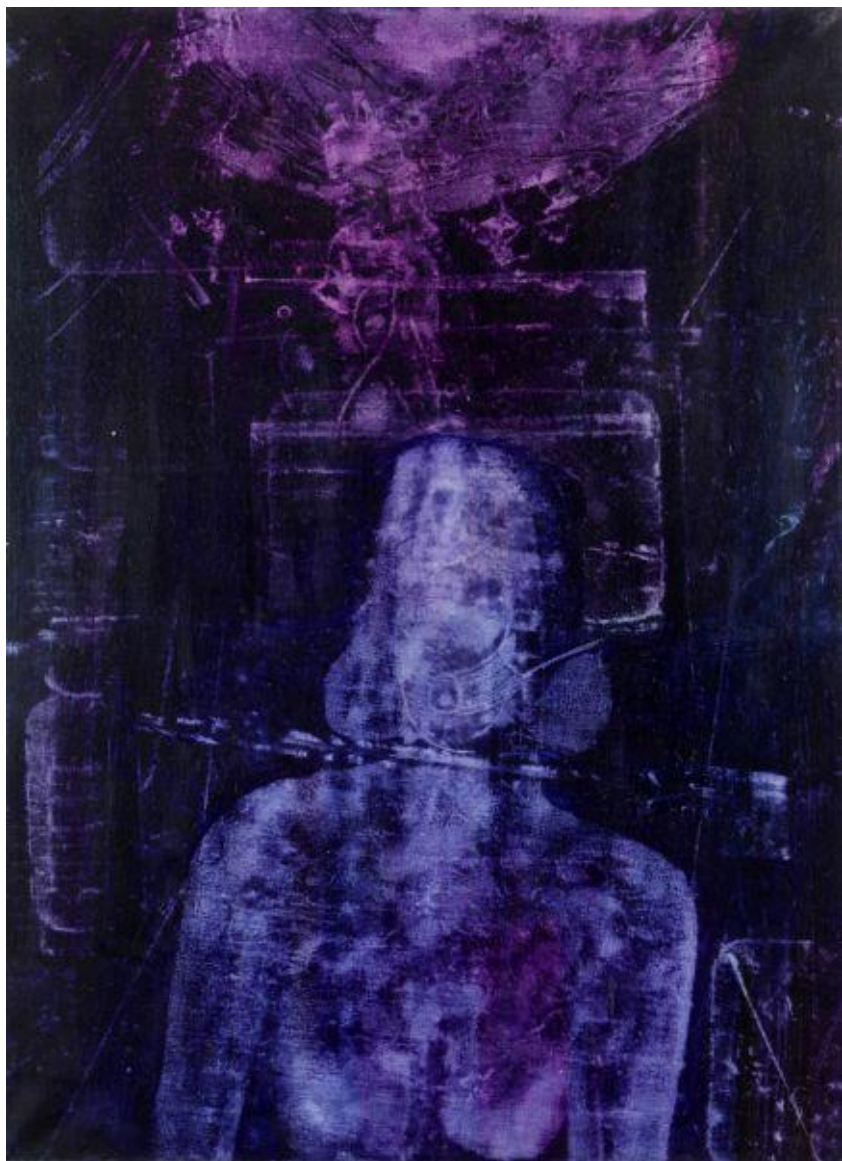
... C'est une sorte de retour à l'édén
 de la légende. (1951)
 ... Vivement d'une société nouvelle, destinée à
 subir des métamorphoses profondes dans sa
 condition même. Disparition de l'intimité
 personnelle et familiale. Développement
 d'une ontologie impériale.
 La volonté de l'homme peut enfin
 s'exprimer au milieu d'un
 merveilleux constant.

L'homme libre.
 C'est ainsi peut-être qu'il
 peut même léguer!
 Occupation: Les bois secs.
 Les obstacles culturels ou intellectuels
 L'architecture tendit à elle-même
 éliminer.

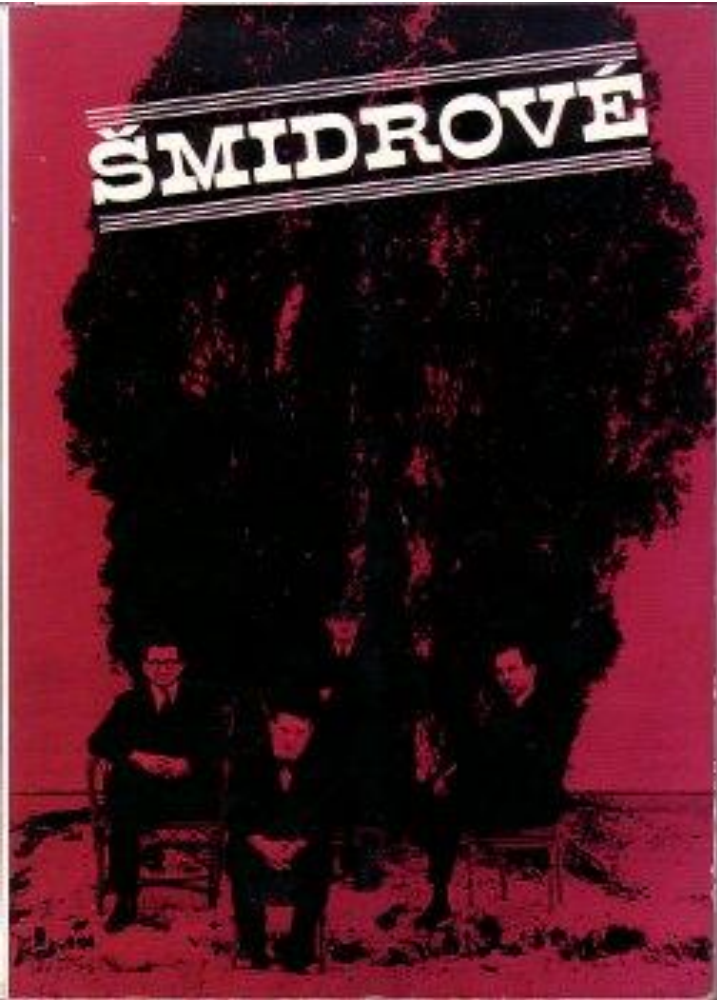
Scènes du corps par des méthodes
 nouvelles, telles le jet et l'air.



J. Načeradský, Young Francis Bacon, 1967



R. Němec, Blue Event, 1972



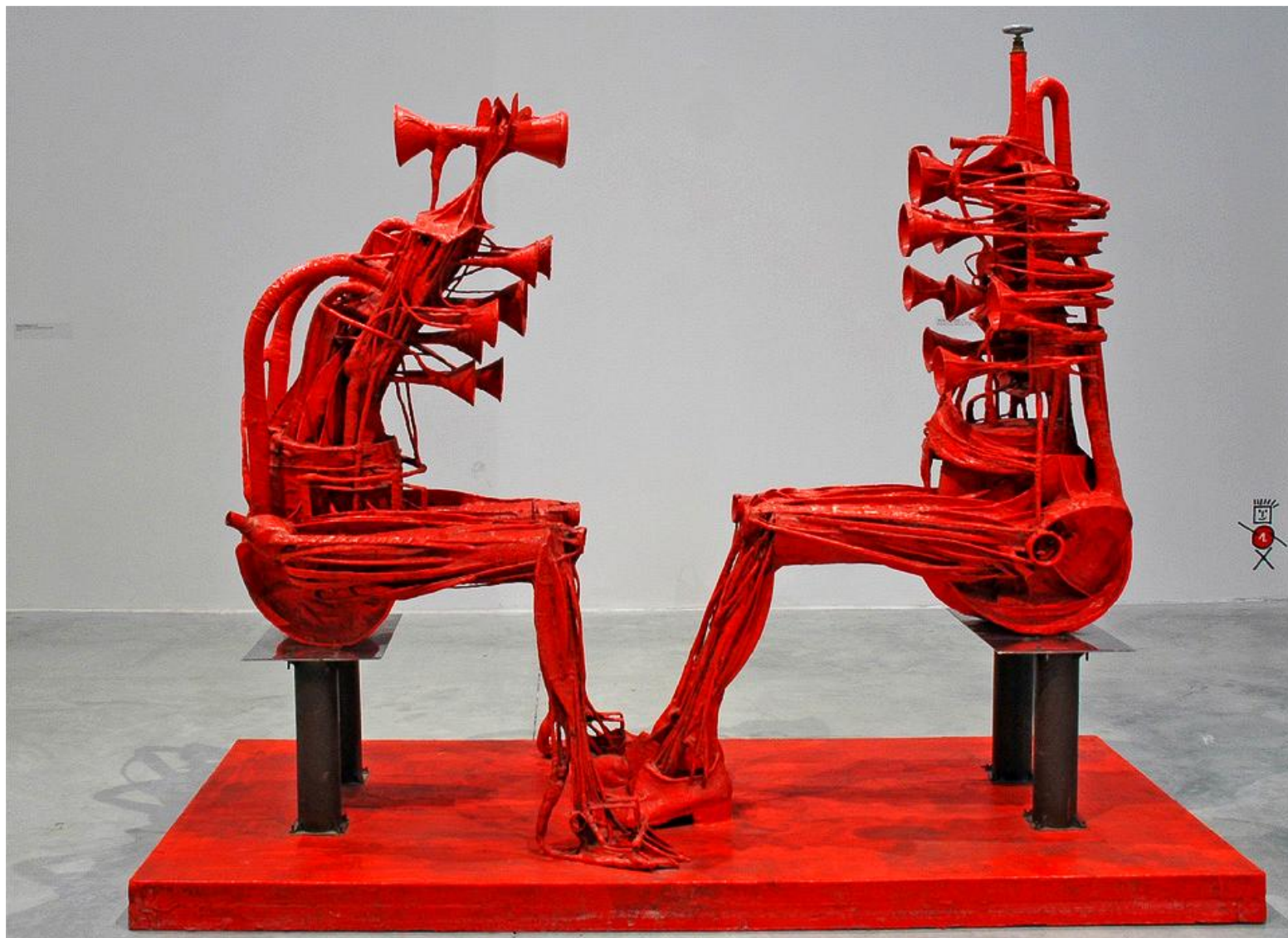
The "Šmidras"



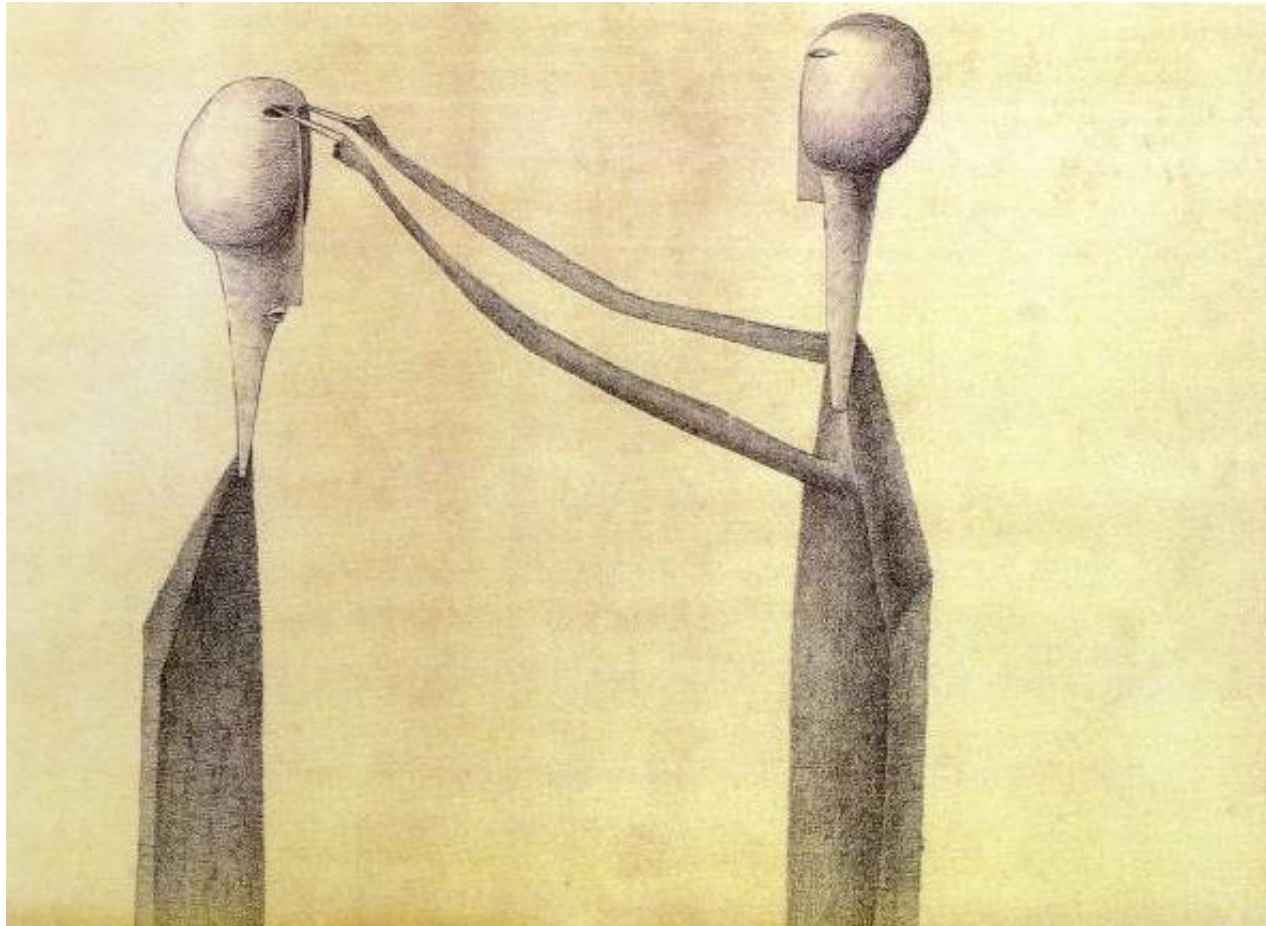
The "Šmidras", 1960



K. Nepraš, Hyena, 1964



K. Nepraš, Big Dialogue, 1966



K. Nepraš, Small Brutality, 1959



Karel Nepraš, Let's Turn



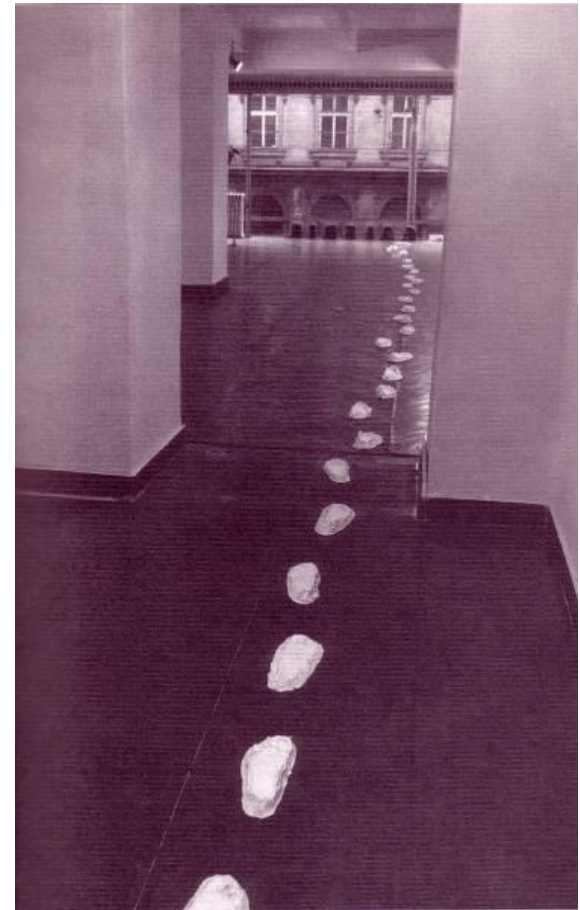
Jan Hendrych, Benedikt Rejt Gallerz, Louny, 2009



O. Zoubek, Prague Castle Exhibition Hall, 2015



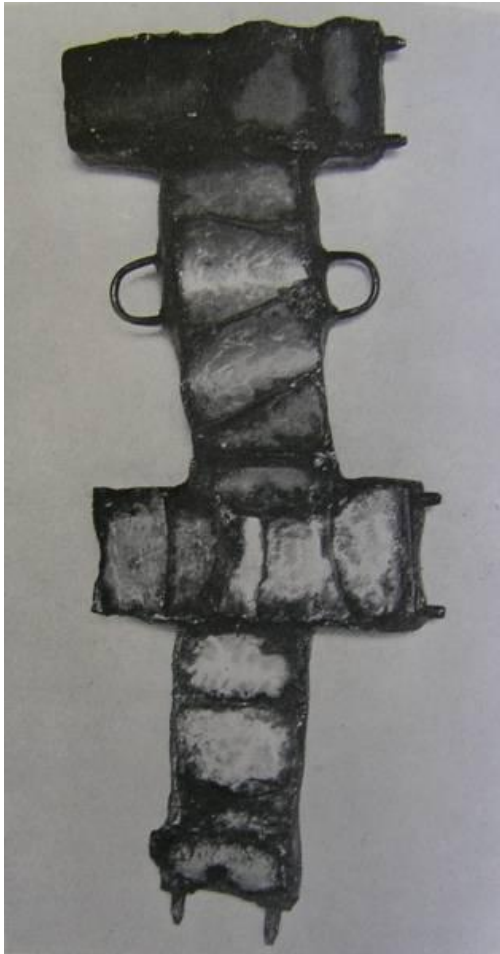
E. Kmentová, Human Egg, 1968



Eva Kmentová, Target, 1968 – Footprints, 1970

ŠPÁLOVA GALERIE • PROSINEC 1965

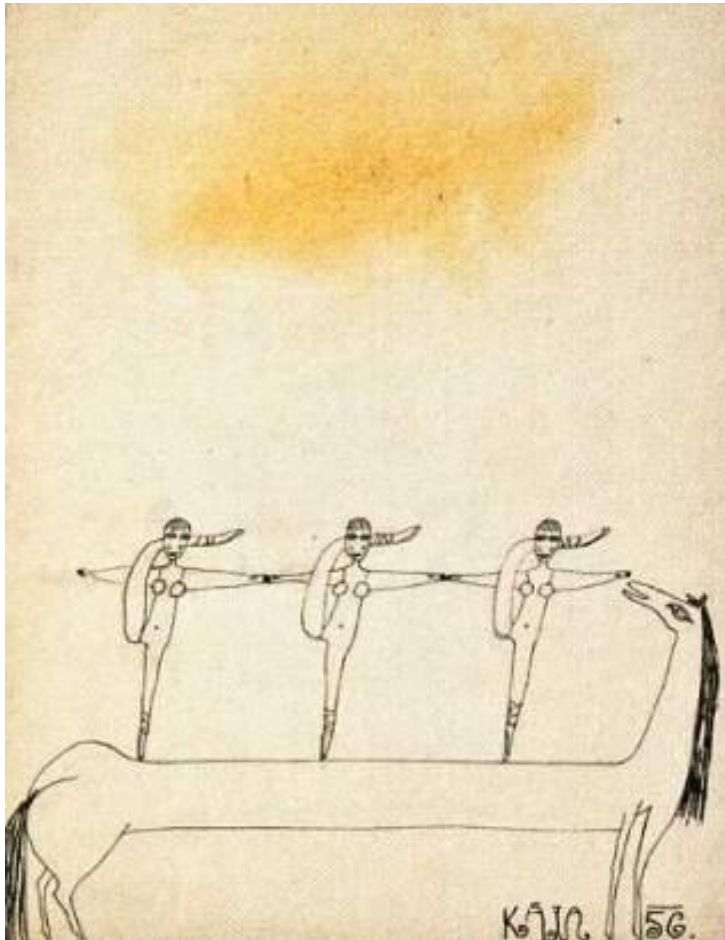




Věra Janoušková



Adriana Šimotová, Mirror, 1958



K. Nepraš, Cirkus, 1956

