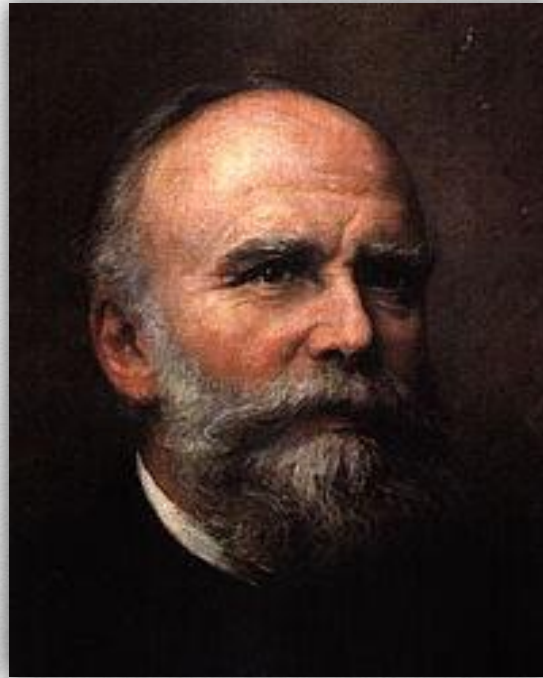


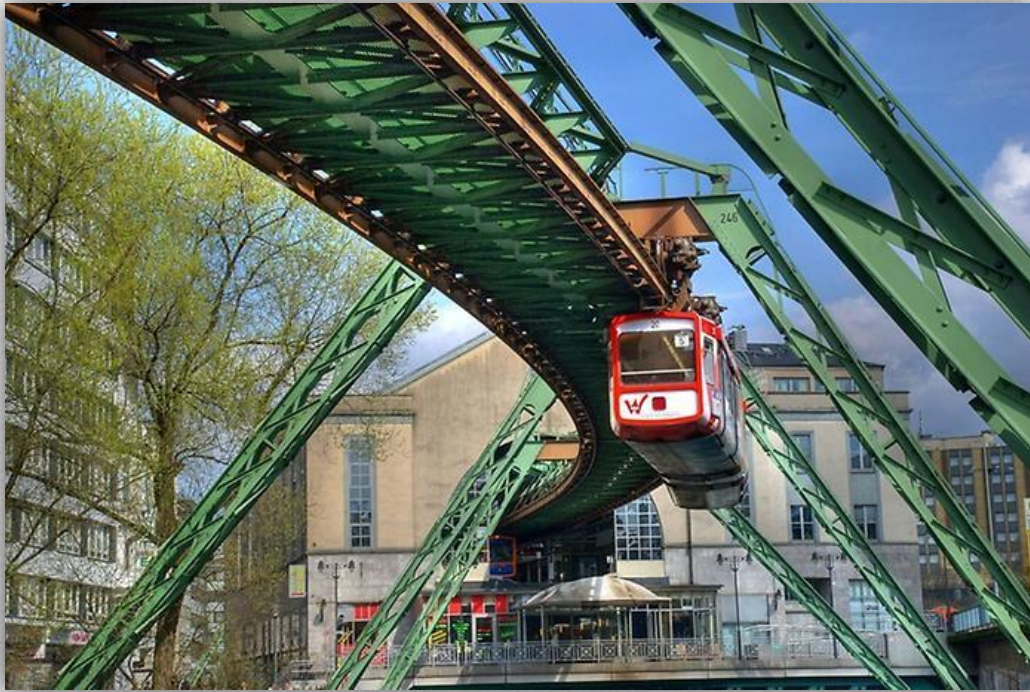
Wuppertal Suspension Railway



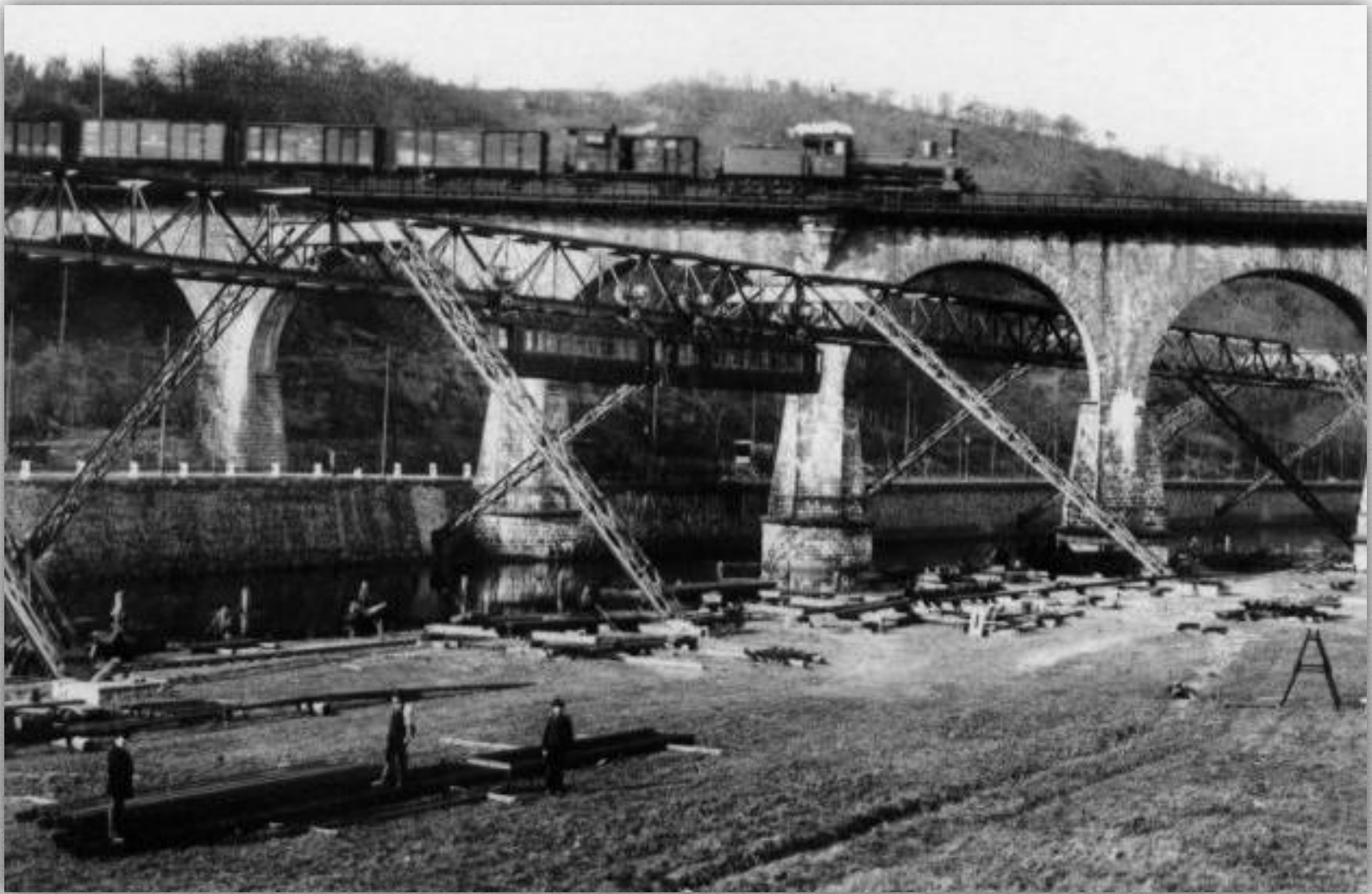
is a suspension railway in Wuppertal, Germany



Its full name is "Electric Elevated Railway (Suspension Railway) Installation, Eugen Langen System". It is the oldest electric elevated railway with hanging cars in the world and is a unique system. Designed by **Eugen Langen** to sell to the city of Berlin, the installation with elevated stations was built in Barmen, Elberfeld and Vohwinkel between 1897 and 1903; the first track opened in 1901. The Schwebebahn is still in use today as a normal means of local public transport, moving 25 million passengers annually (2008).



The suspension railway runs along a route of 13.3 kilometres , at a height of about 12 metres above the river Wupper between Oberbarmen and Sonnborner Straße (10 kilometres) and about 8 metres above the valley road between Sonnborner Straße and Vohwinkel (3.3 kilometres).At one point the railway crosses the A46 motorway. The entire trip takes about 30 minutes.The Wuppertal Suspension Railway operates within the VRR transport association and accepts tickets issued by the VRR companies.



Construction of Wuppertal Suspension Railway, 1900



Werther Brücke station in 1913



A 1977 train crossing an intersection



A train in Wuppertal in 2010



The Wuppertal Suspension Railway nowadays carries approximately 80,000 passengers per weekday through the city. Since 1997, the supporting frame has been largely modernised, and many stations have been reconstructed and brought technically up to date. Kluse station, at the theatre in Elberfeld, had been destroyed during the Second World War. This too was reconstructed during the modernisation.



Work was planned to be completed in 2001; however a serious accident took place in 1999 which left five people dead and 47 injured. This, along with delivery problems, delayed completion. In recent years (2004), the cost of the reconstruction work has increased from €380 million to €480 million.

A small number of accidents makes this transport the one of the safest in the world.