

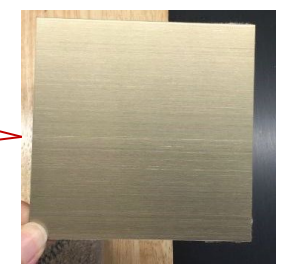


View and angle to follow as per sketch up!
Rendered view needed to comment further.
To have day sun light.





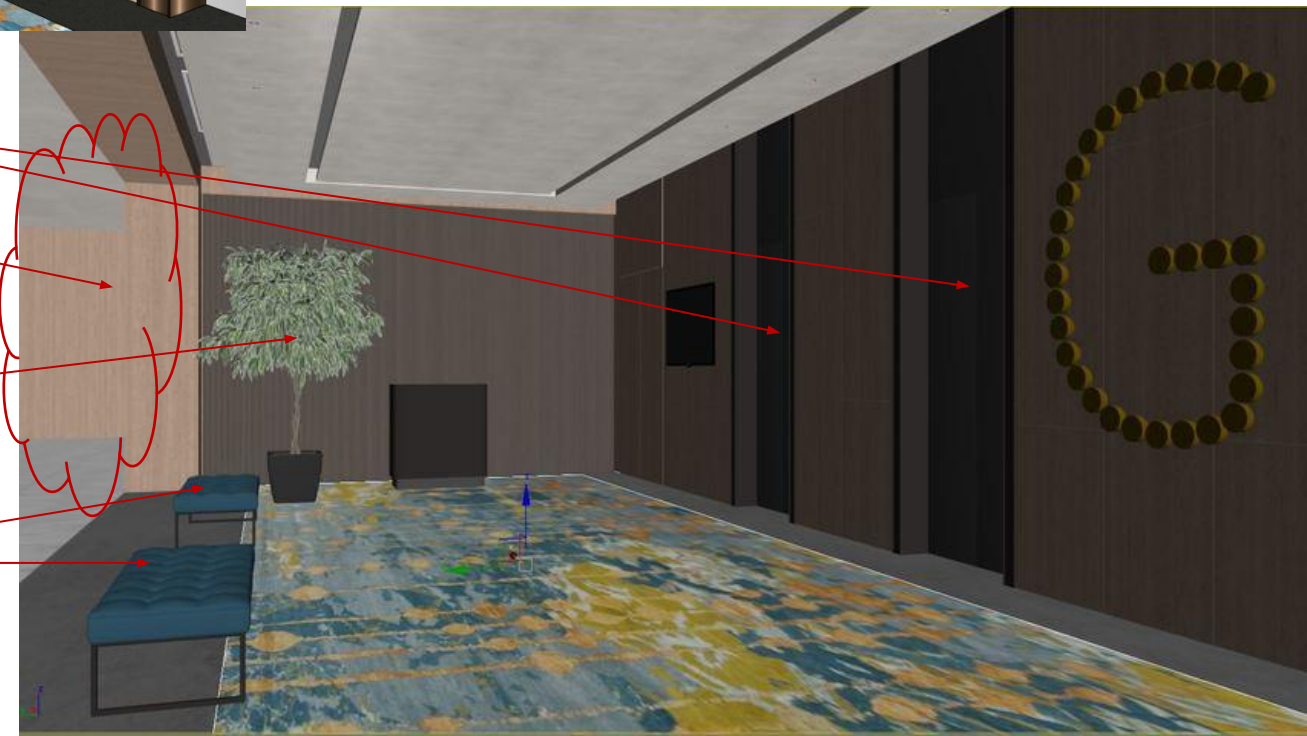
Perimeter Cove light around recess ceiling

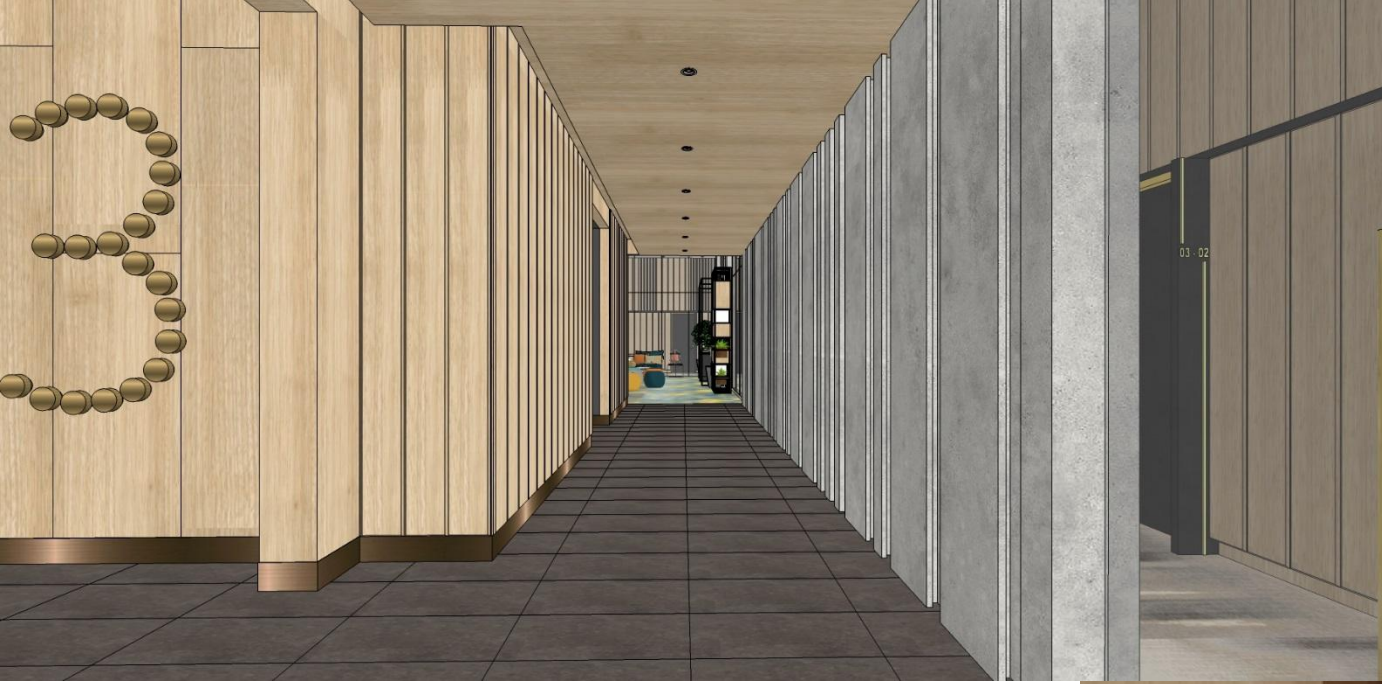


lift car frame in s/steel hairline finish

View and angle to follow as per sketch up!
Rendered view needed to comment further.

- Lift car in s/steel hairline finish
- Glass door to add as per sketch up
- Plant to follow as per sketch up
- Furniture arrangement to follow as per sketch up





Too yellowish, less down exterior sunlight!
To show more interior lighting

Light cove at the recess area





Deco panel to extend.
Please refer as per sketch up



Reference light source to archive



lift car frame in
s/steel hairline finish



Arch opening height @ 2400mm &
Grove line required as per sketch up

Recess area with indirect light

Lighting temperature to make sure is
consistent with others area.
Less down exterior sunlight.

Puff stool material and color
to follow as per sketch up



Rolled carpet and furniture material changed. Kindly follow as per sketch up



To show the laminated glass pattern in the 3D. Less down exterior light



All plants kindly follow as per sketch up

More free flow as per photo reference





Air-con liner added in sketch up file



To show the laminated glass pattern in the 3D. Less down exterior light

View and angle to follow as per sketch up!
Rendered view needed to comment further.

All plants kindly follow as per sketch up

Furniture arrangement and skill to adjust as per sketch up

Rolled carpet and furniture material changed. Kindly follow as per sketch up



To show the laminated glass pattern in the 3D. Less down exterior light



Air-con liner added in sketch up file



Additional views for resident lounge

More free flow as per photo reference



Indirect lighting @ corridor

Glass in light charcoal grey tinted

Apply to all unit entrance doors design
As per sketch up

View and angle to follow as per sketch up!
Rendered view needed to comment further.





Recess ceiling missing.
To follow as per sketch up

Garden with sky view.
This resident corridor same
level as per lift lobby

Acrylic finish c/w light.
Apply to all unit entrance doors

Apply to all unit entrance doors design
As per sketch up



View and angle to follow as per sketch up!
Rendered view needed to comment further.



Full piece of mirror
As per sketch up



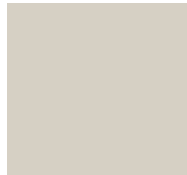
Door frame too thick.
30mm will do.

Deco follow to follow
type A1 bath





Tv to turn on
as per sketch up



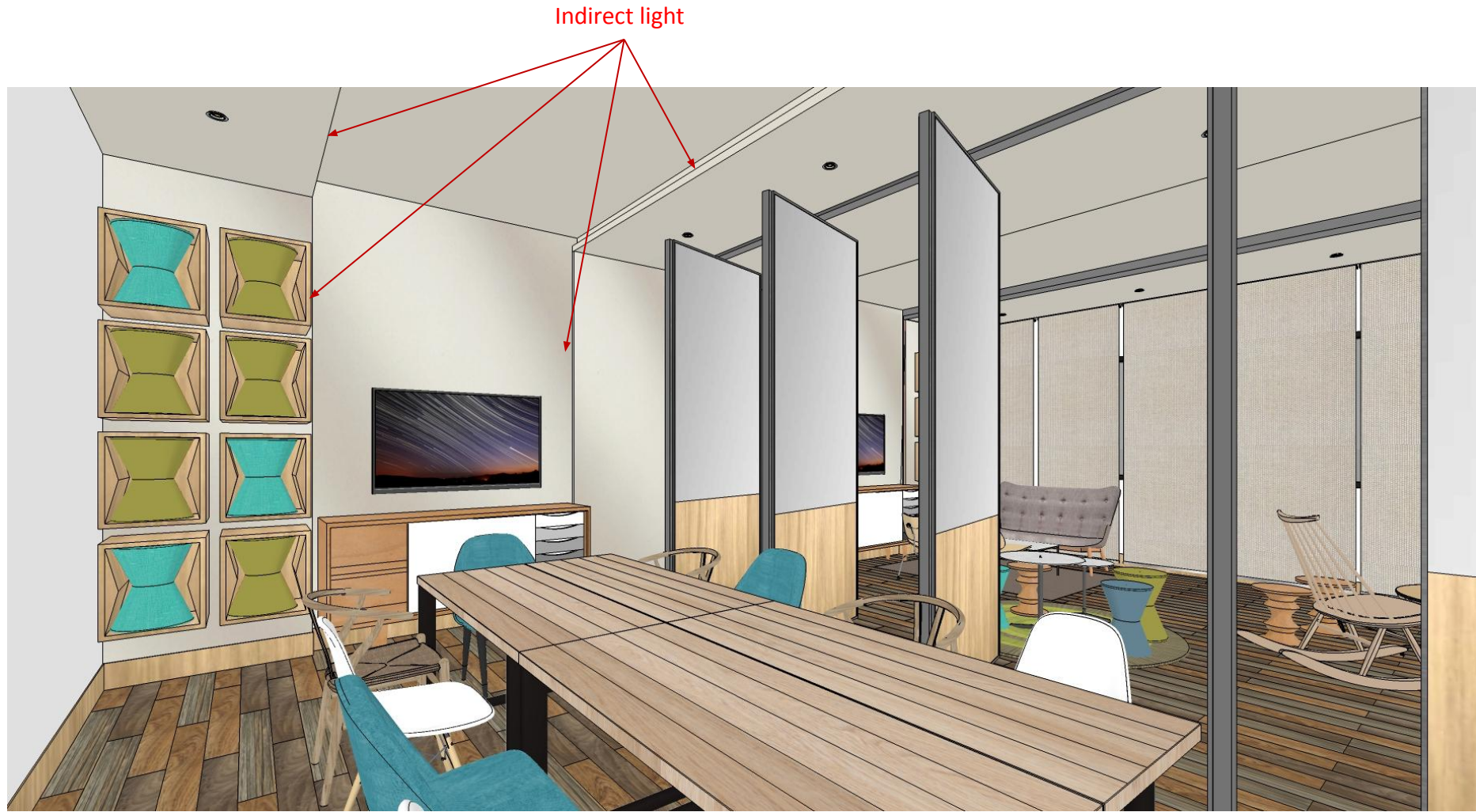
Moveable panel top part in
colour glass finish.

Light up the next room

10mm Groove line required
between colour glass and laminate



Less down exterior lighting.
More on interior lighting & to make sure
light temperature is consistently with others area



Additional views for meeting room.
Less down exterior lighting.
More on interior lighting & to make sure
light temperature is consistently with others area



Not door! Is window

Basin selection to follow as per sketch up

Wall feature mix and match with plants and mirror finish. To follow as per sketch up.





To add gym ball rack.
To follow as per sketch up

Revised gym floor material to
carpet tile as per client's comment

No plants at this area

Floor pattern and material changes.
Pls follow as per sketch up

View to follow as per sketch up. More close up.
Less down exterior lighting.
More on interior lighting & to make sure
light temperature is consistently with others area

All recessed area
with indirect light

Plants to make it higher

