

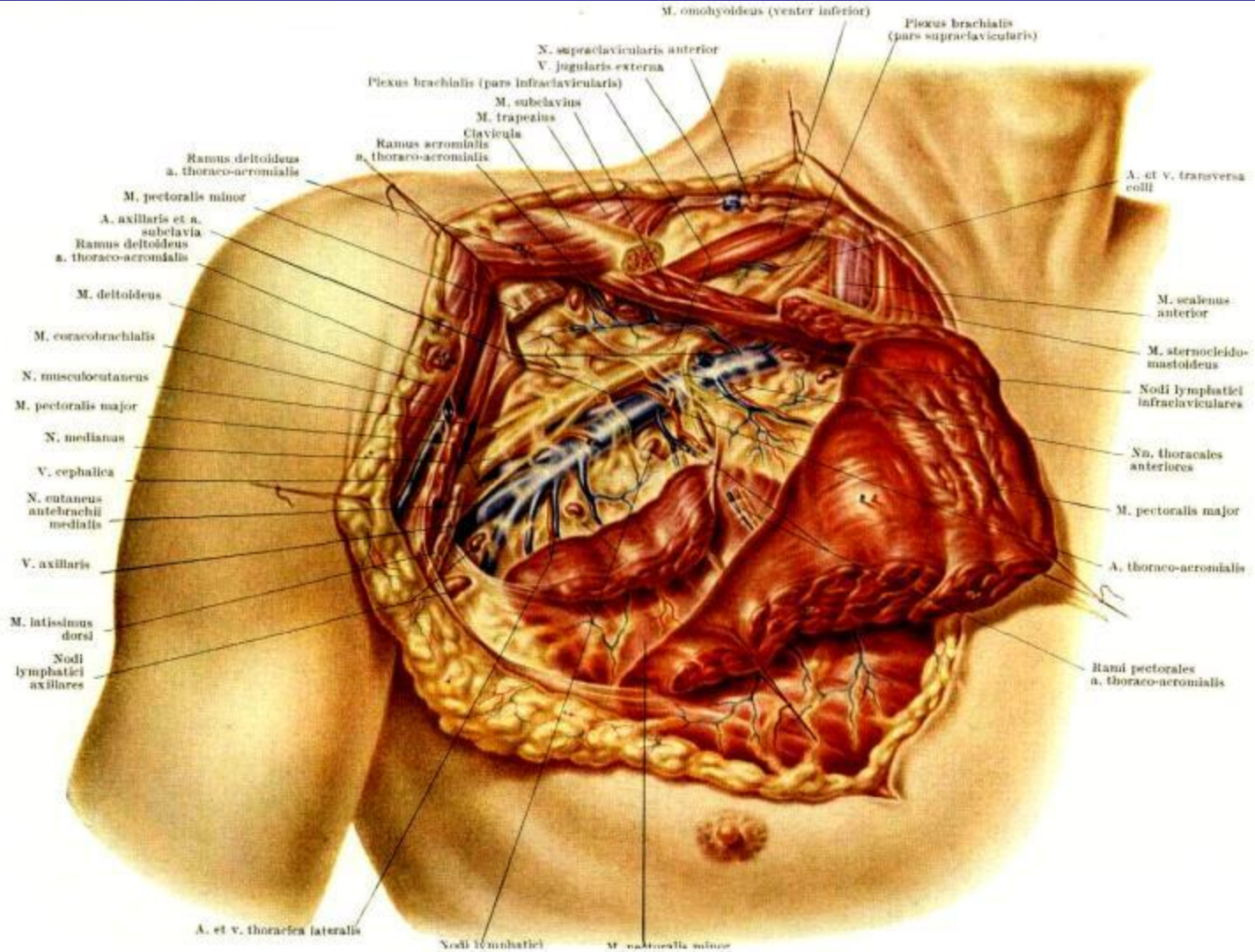
**Хирургическая
анатомия
периферических
сосудов**

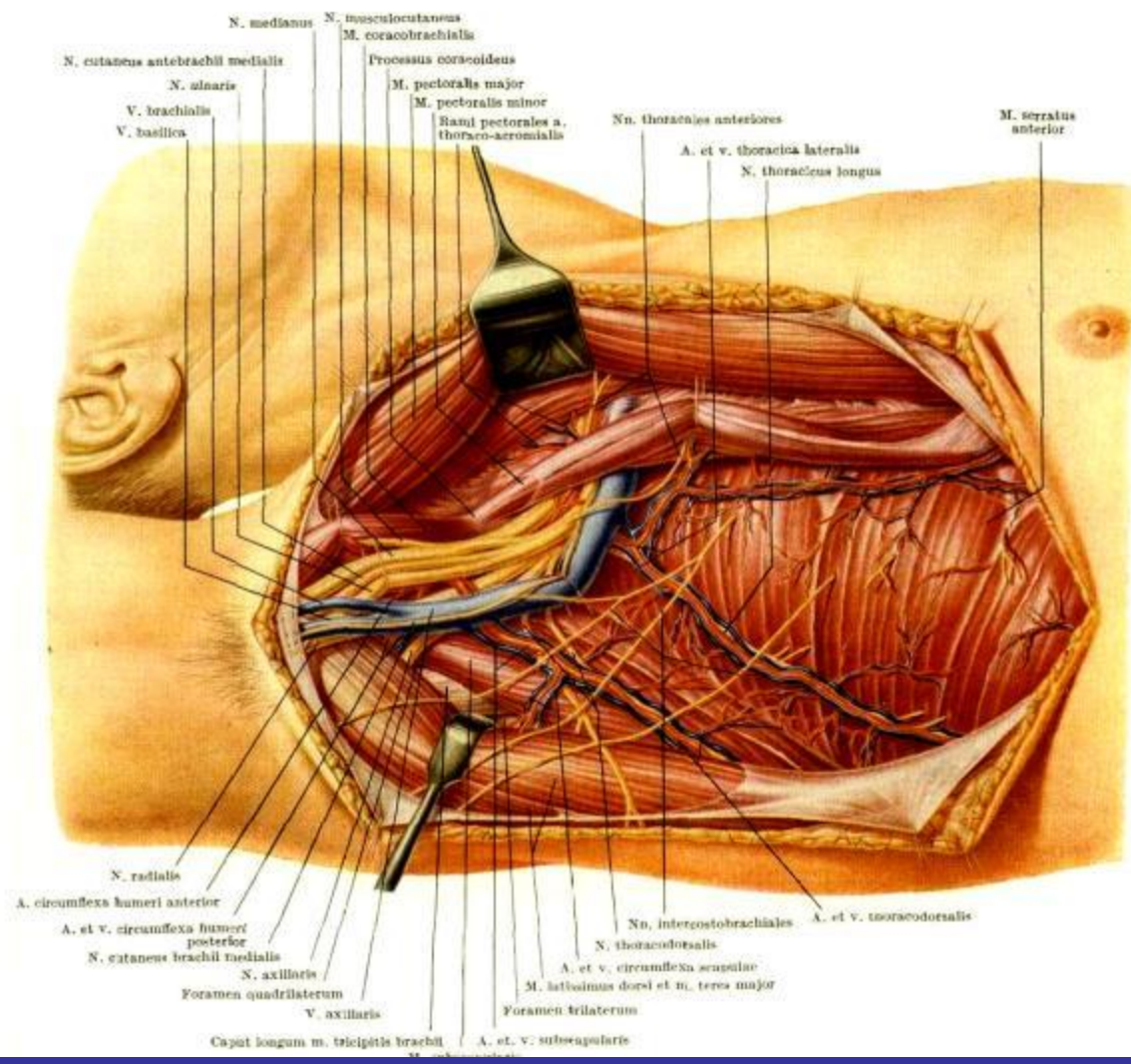
1. Хирургическая анатомия сосудов верхней и нижней конечностей.

2. Проекция сосудисто-нервных пучков конечностей

3. Доступы к сосудисто-нервным пучкам конечностей

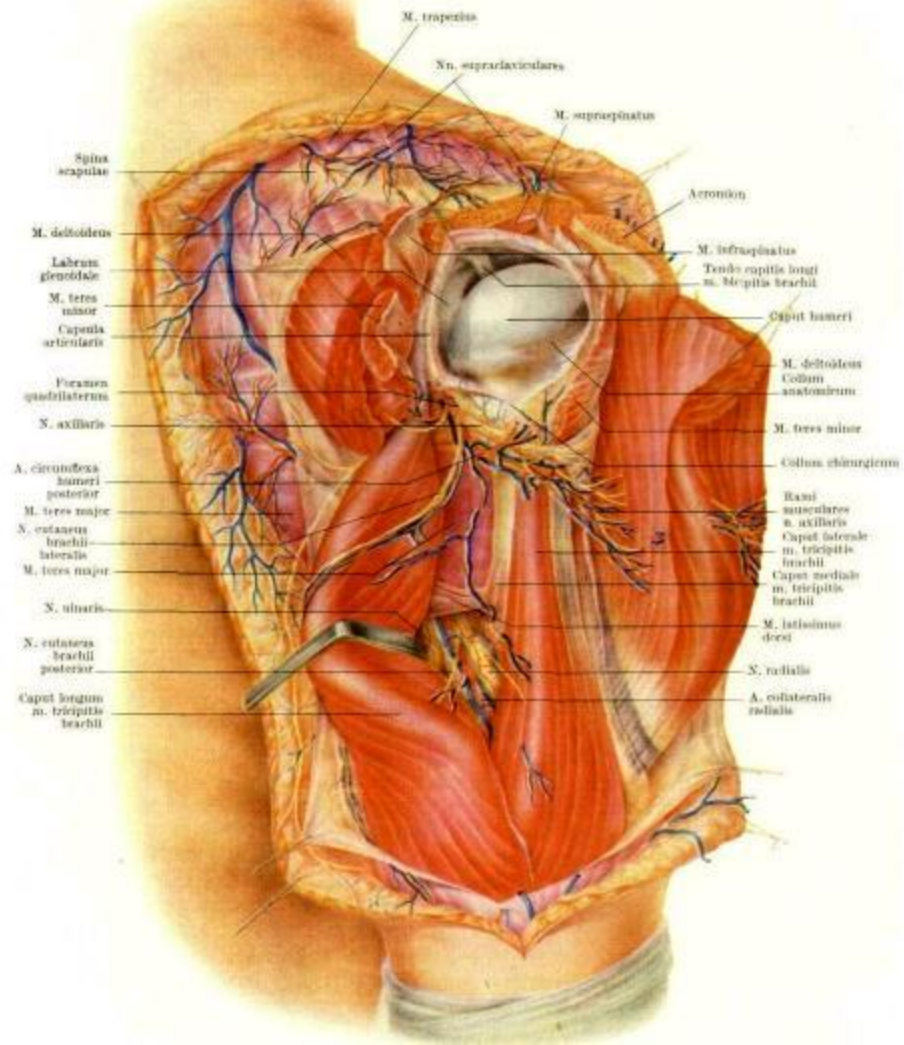
4. Операции на сосудах.

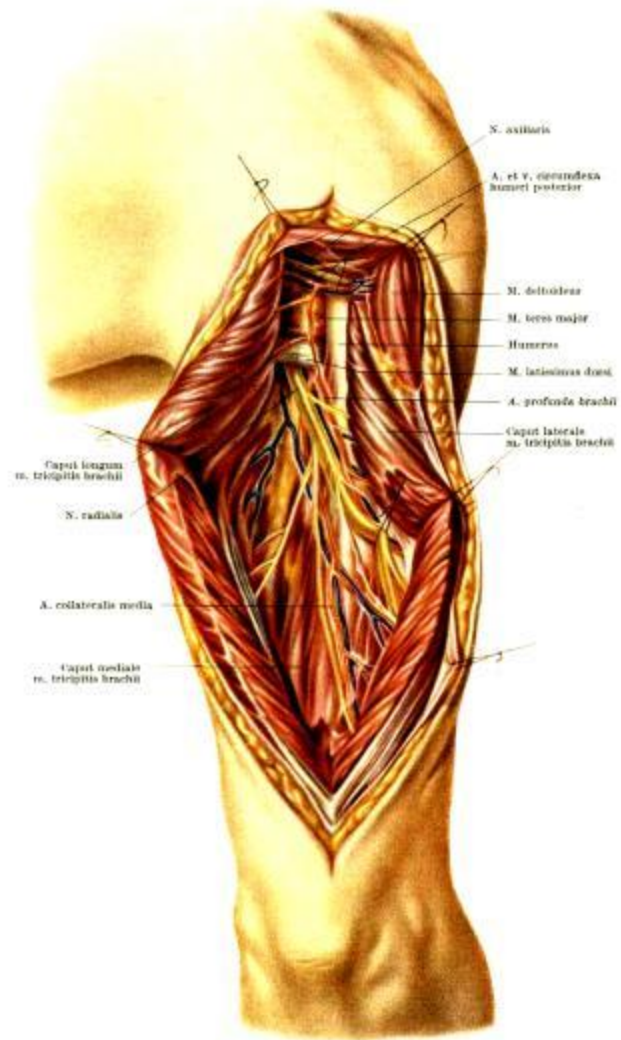


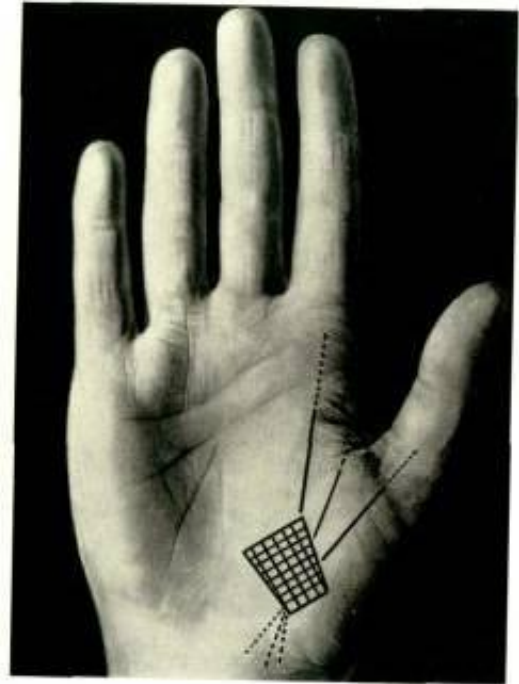
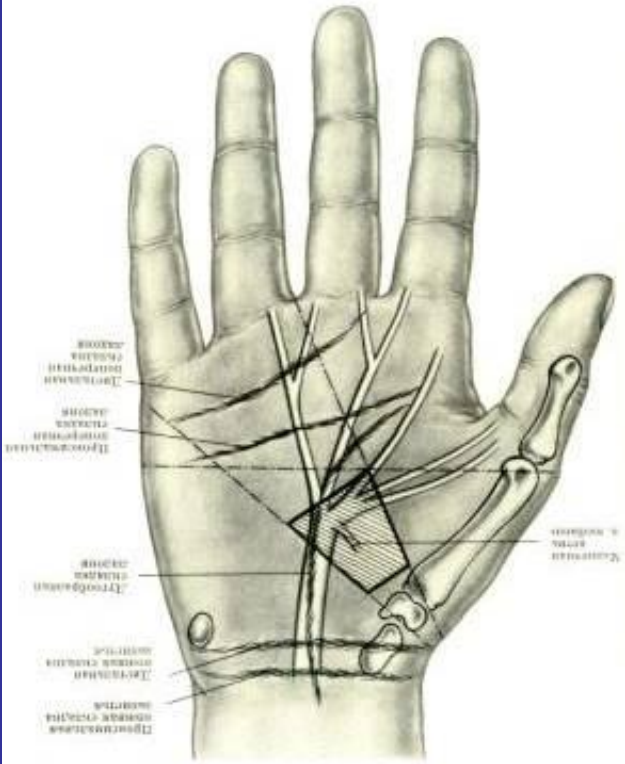


N. medianus N. musculocutaneus
 M. coracobrachialis
 N. cutaneus antebrachii medialis
 N. ulnaris
 V. brachialis
 V. basilica
 Processus coracoideus
 M. pectoralis major
 M. pectoralis minor
 Rami pectorales a. thoraco-acromialis
 Nn. thoracici anteriores
 A. et v. thoracica lateralis
 N. thoracicus longus
 M. serratus anterior

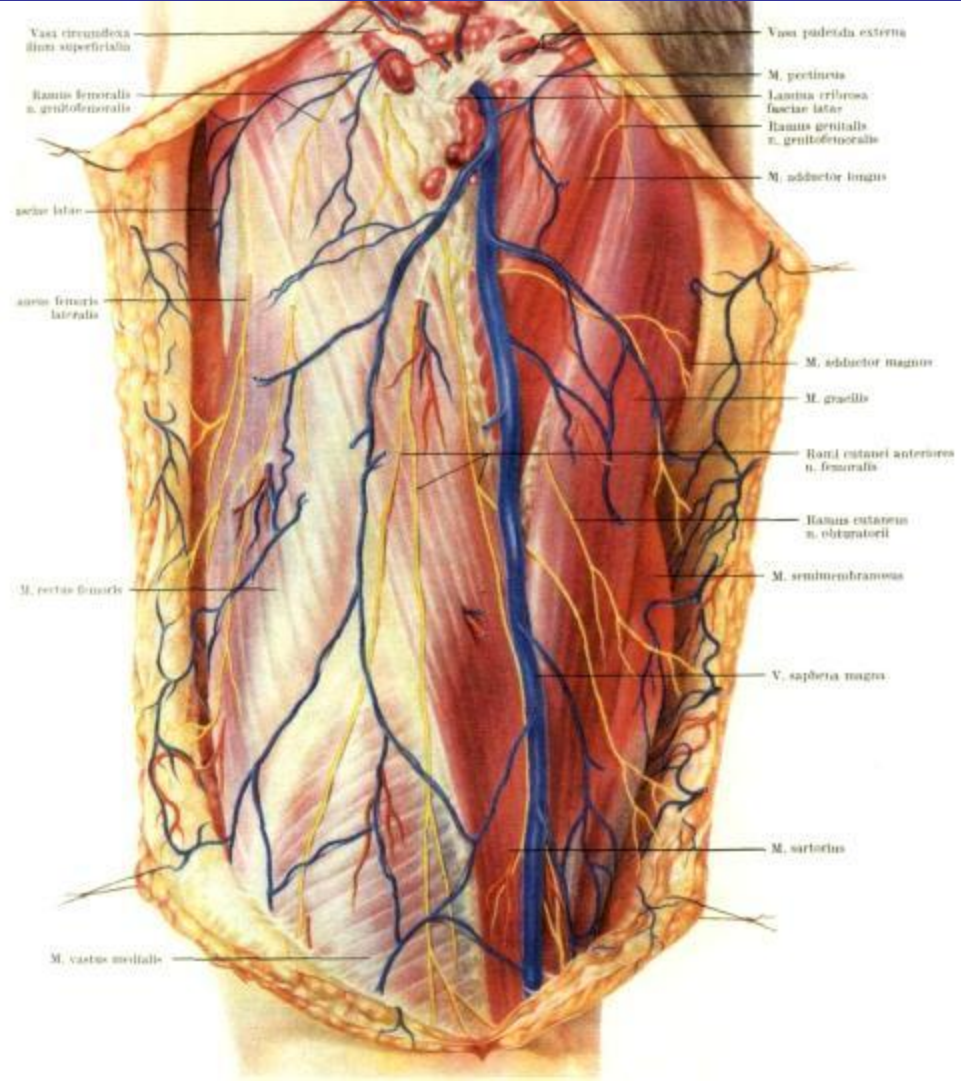
N. radialis
 A. circumflexa humeri anterior
 A. et v. circumflexa humeri posterior
 N. cutaneus brachii medialis
 N. axillaris
 Foramen quadrilaterum
 V. axillaris
 Caput longum m. tricipitis brachii
 Nn. intercostobrachiales
 A. et v. thoracodorsalis
 N. thoracodorsalis
 A. et v. circumflexa scapularis
 M. latissimus dorsi et m. teres major
 Foramen trilaterum
 A. et v. subscapularis

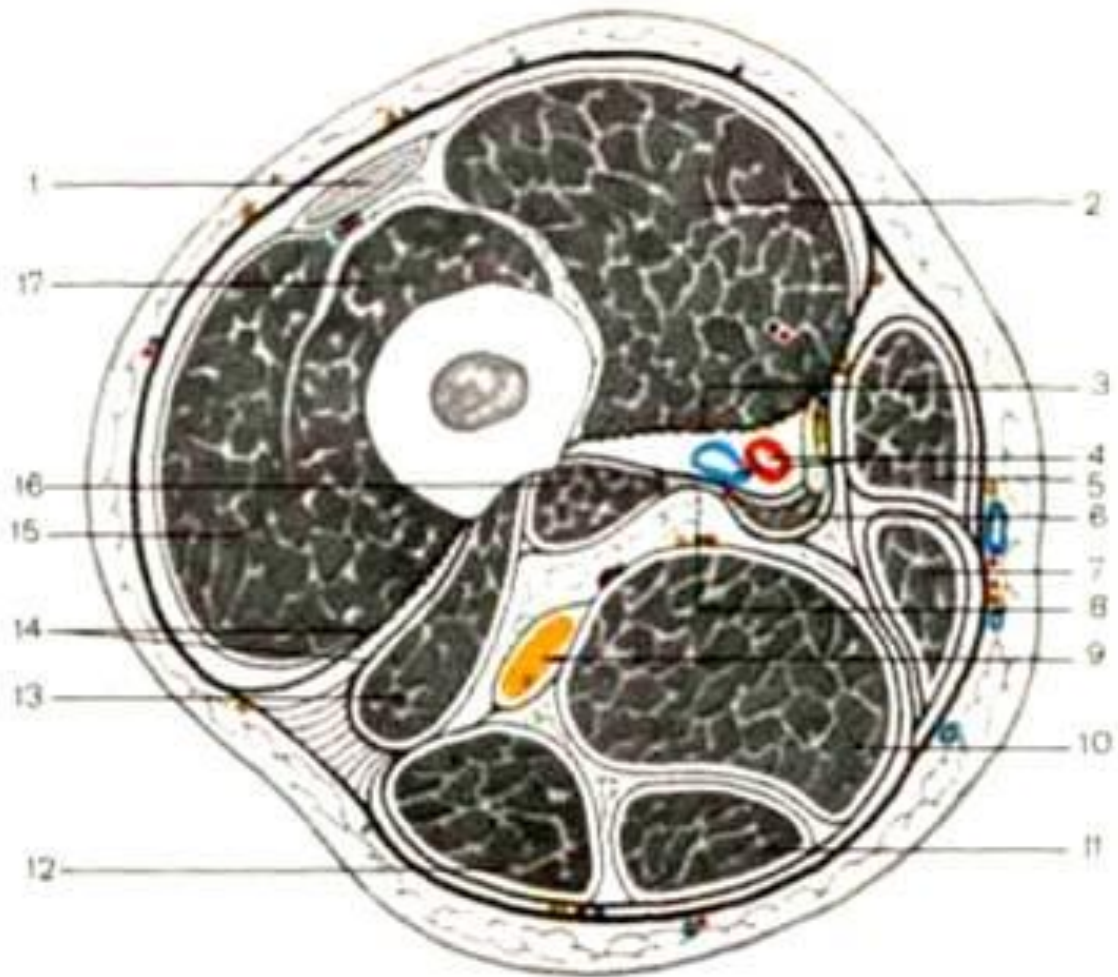


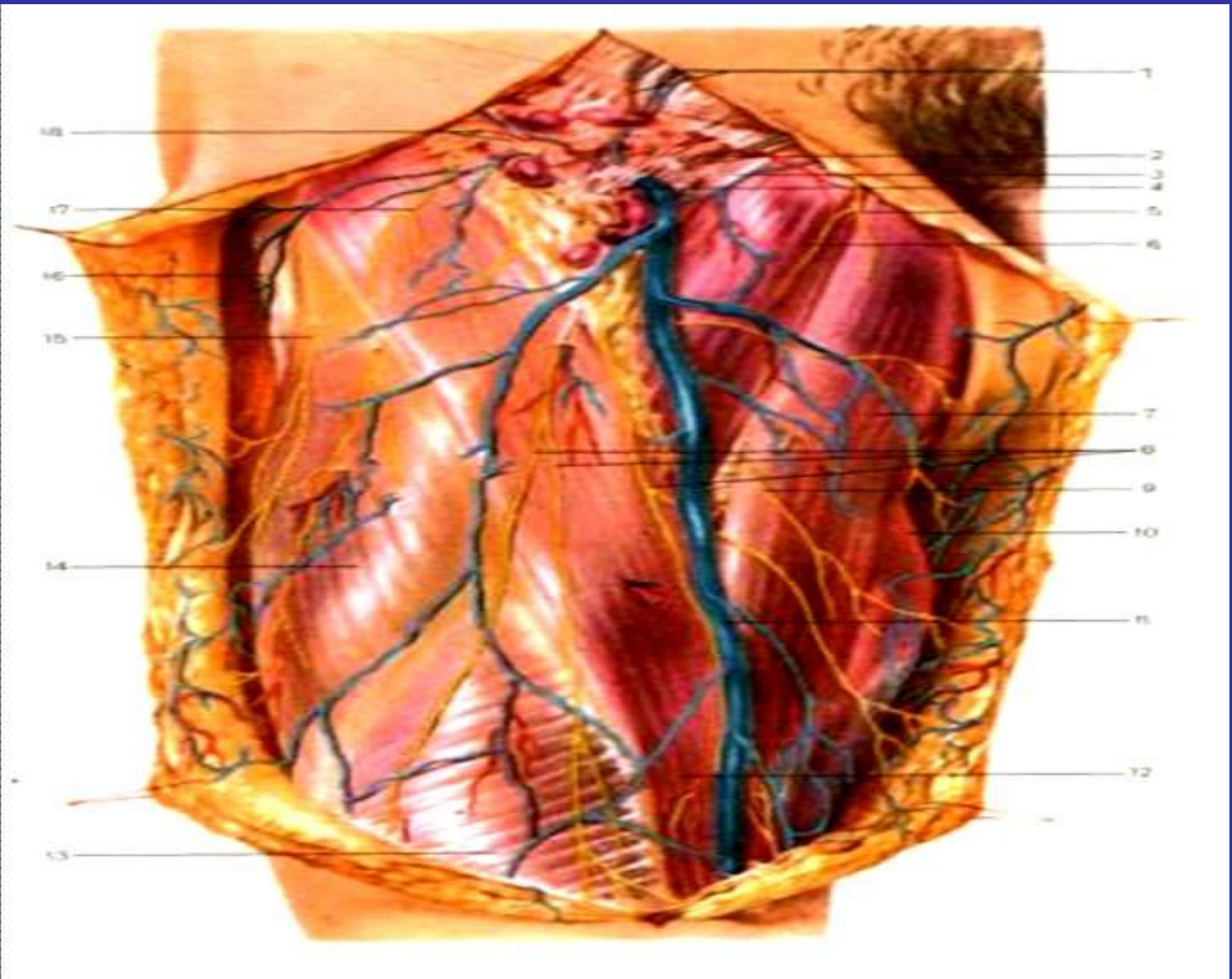


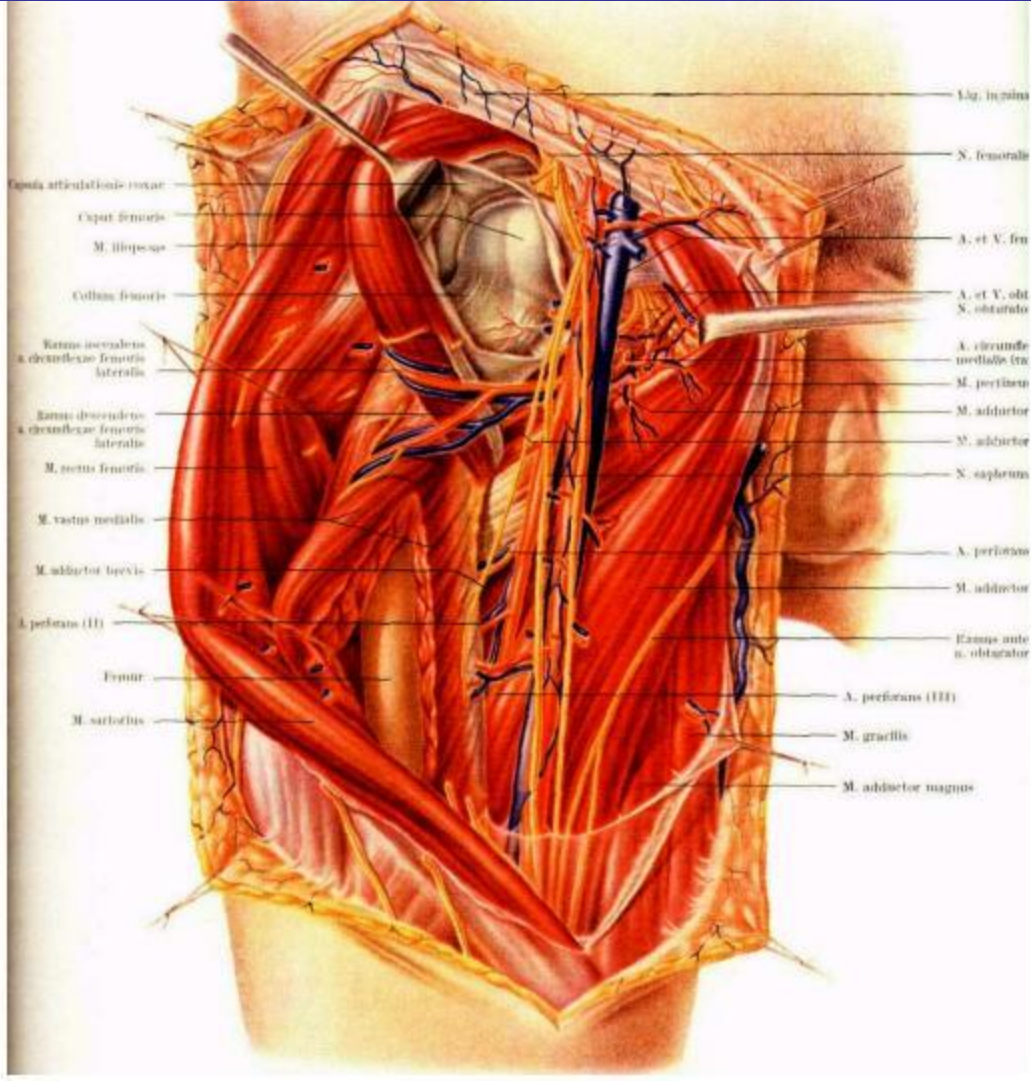


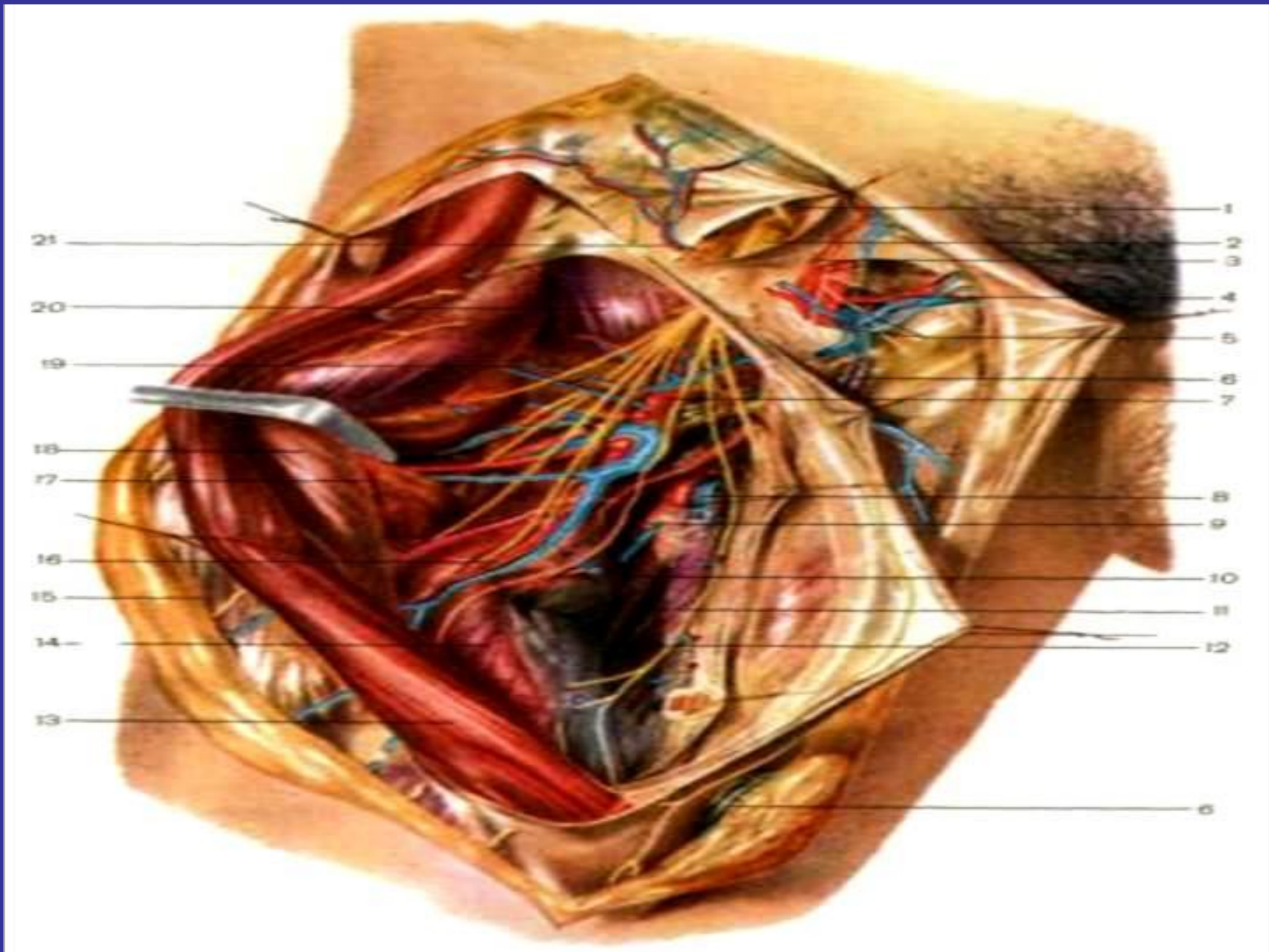


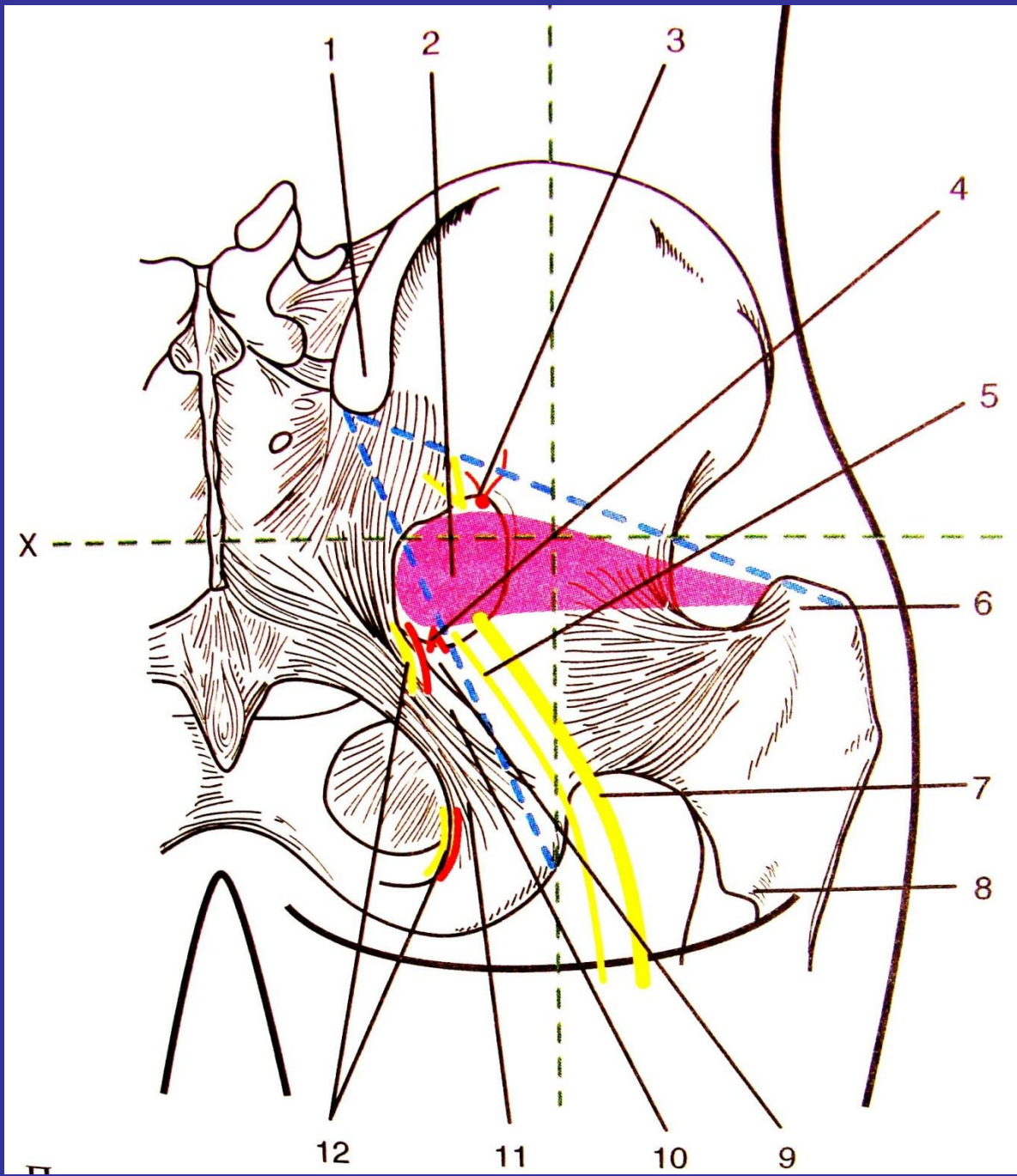


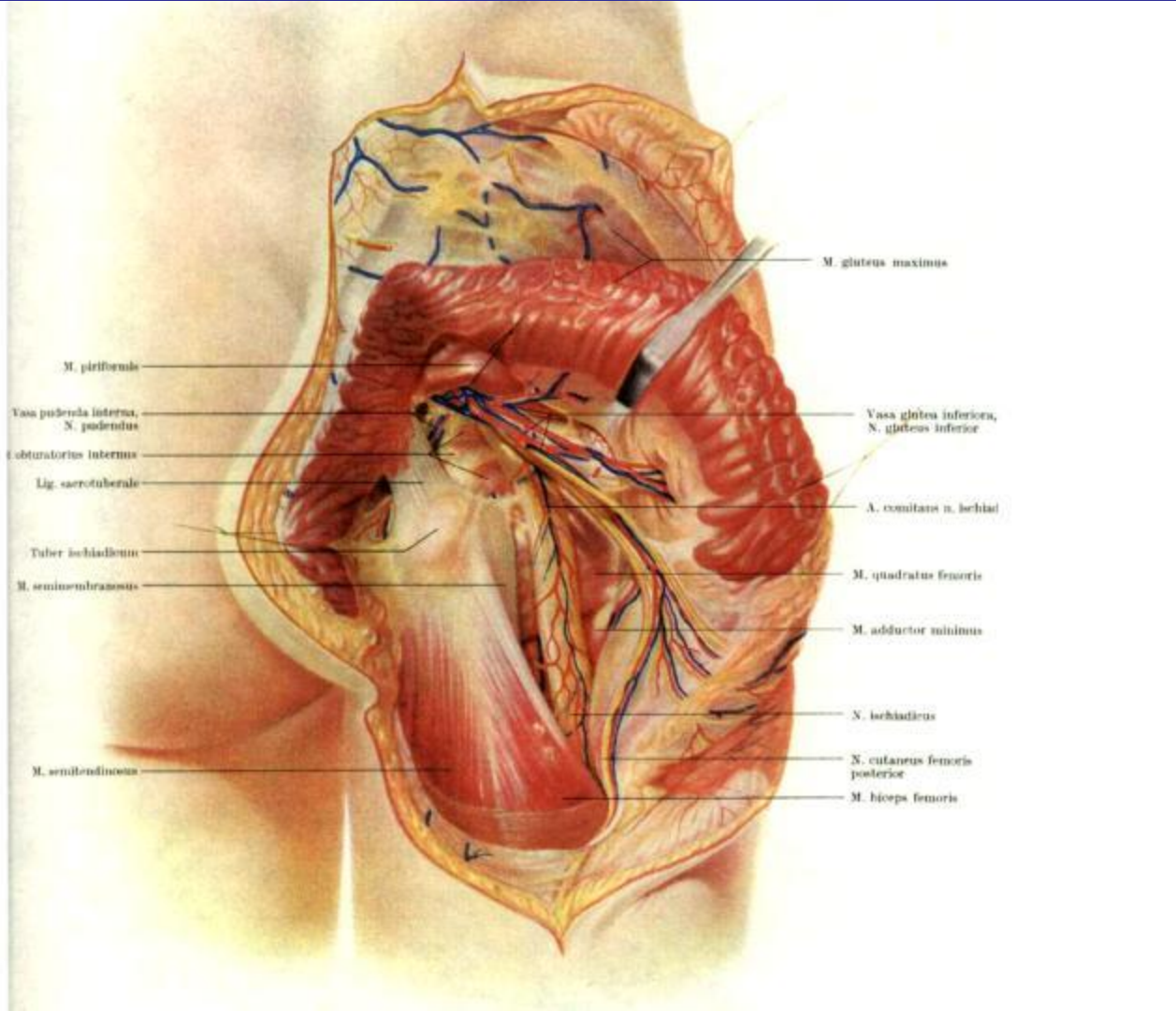


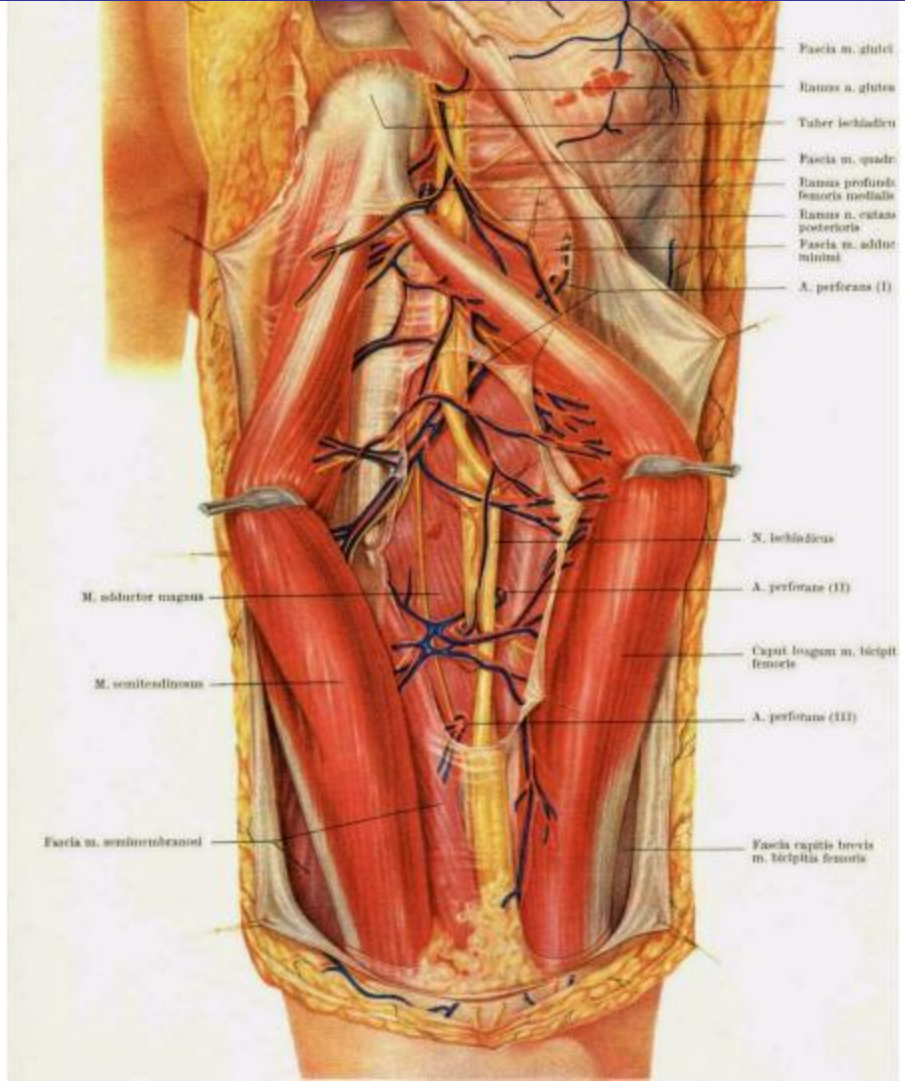












Fascia m. glutei
Foramen a. glutei
Tuber ischiadicum
Fascia m. quadr.
Ramus profundus
femoris medialis
Ramus n. cutaneus
posterioris
Fascia m. adduc.
minimi
A. perforans (I)

N. ischiadicus

A. perforans (II)

Caput longum m. bicipit.
femoris

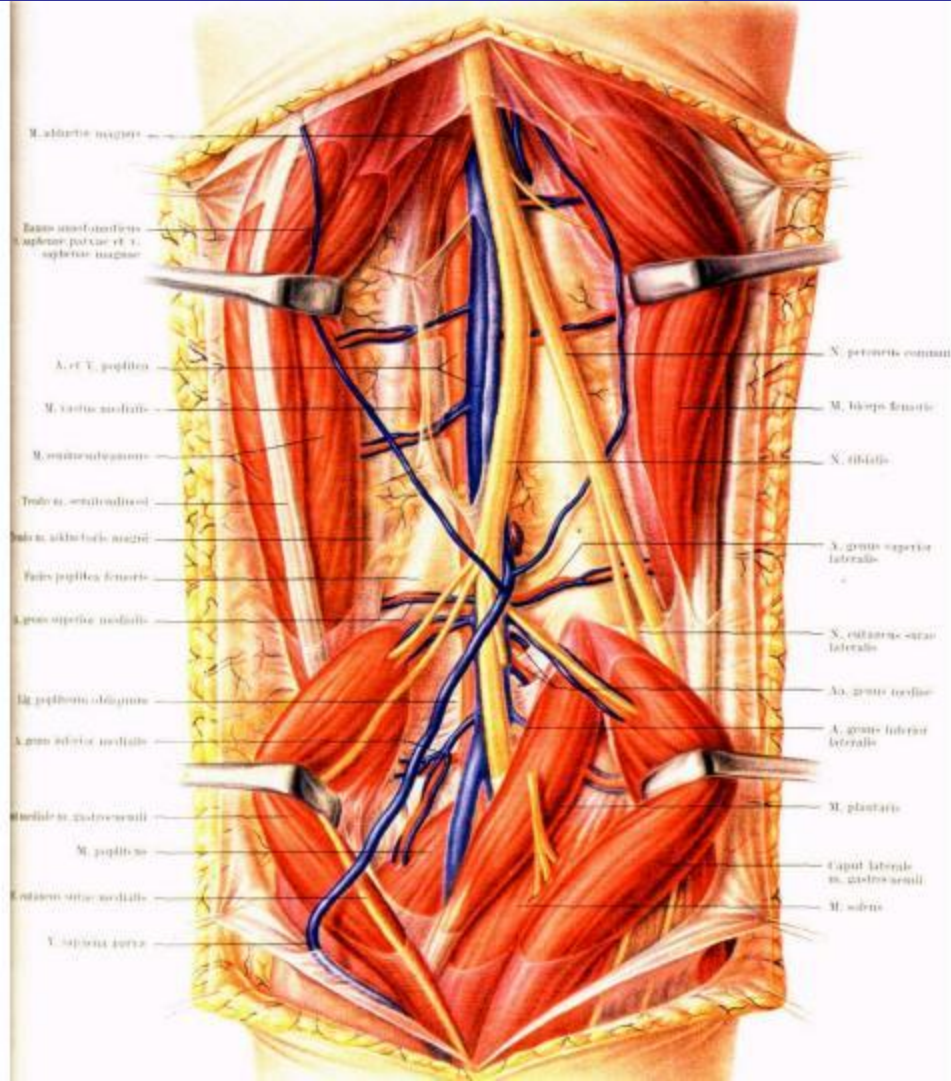
A. perforans (III)

Fascia capitis brevis
m. bicipitis femoris

M. adductor magnus

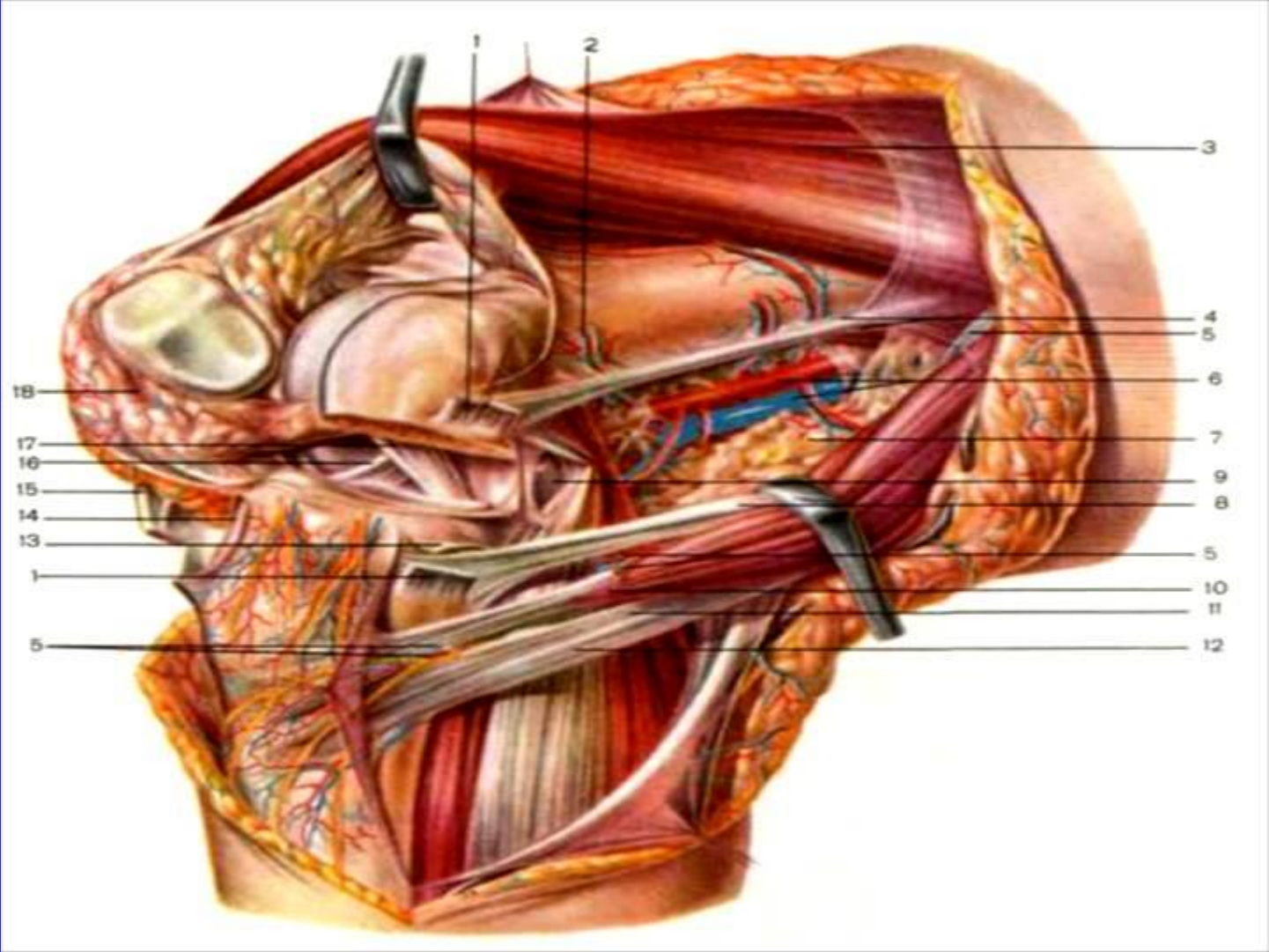
M. semitendinosus

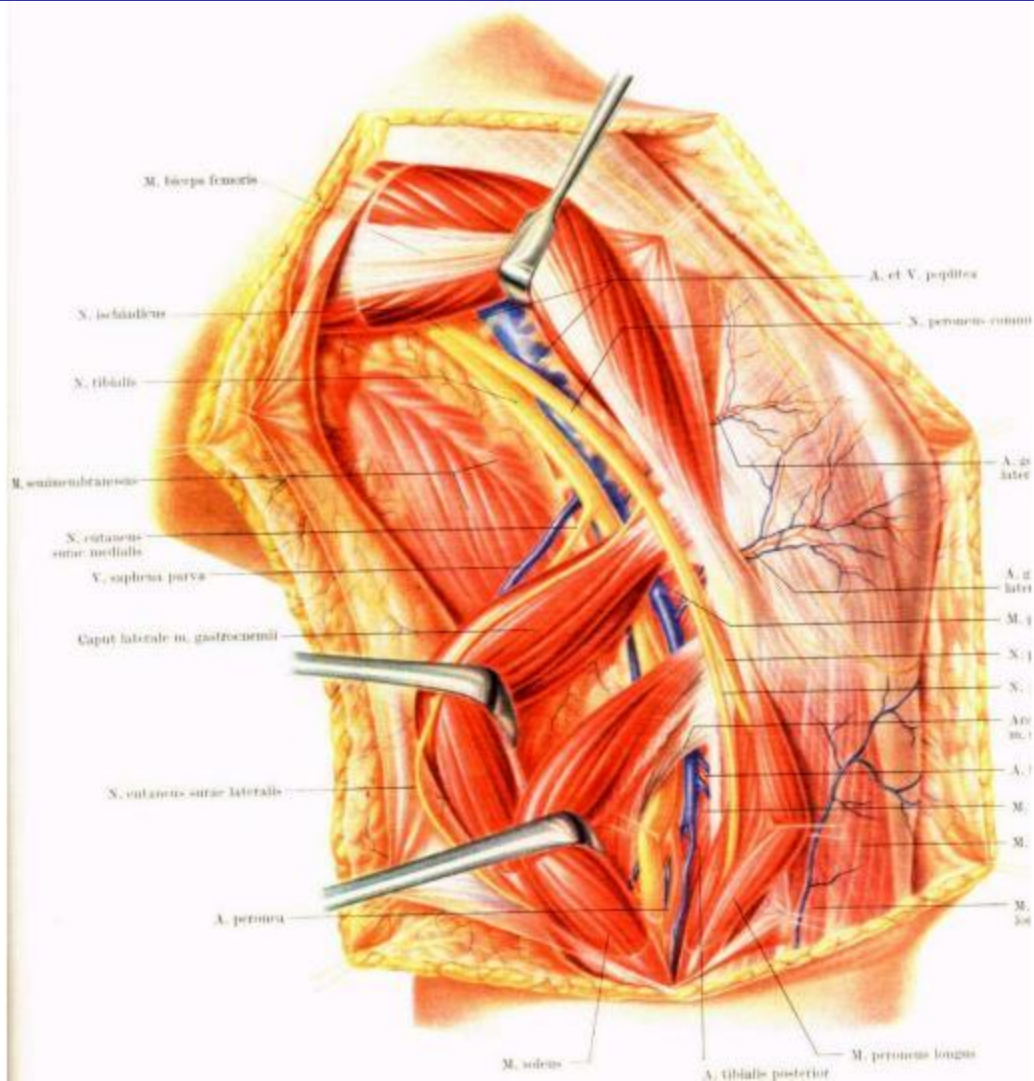
Fascia m. semitendinosi

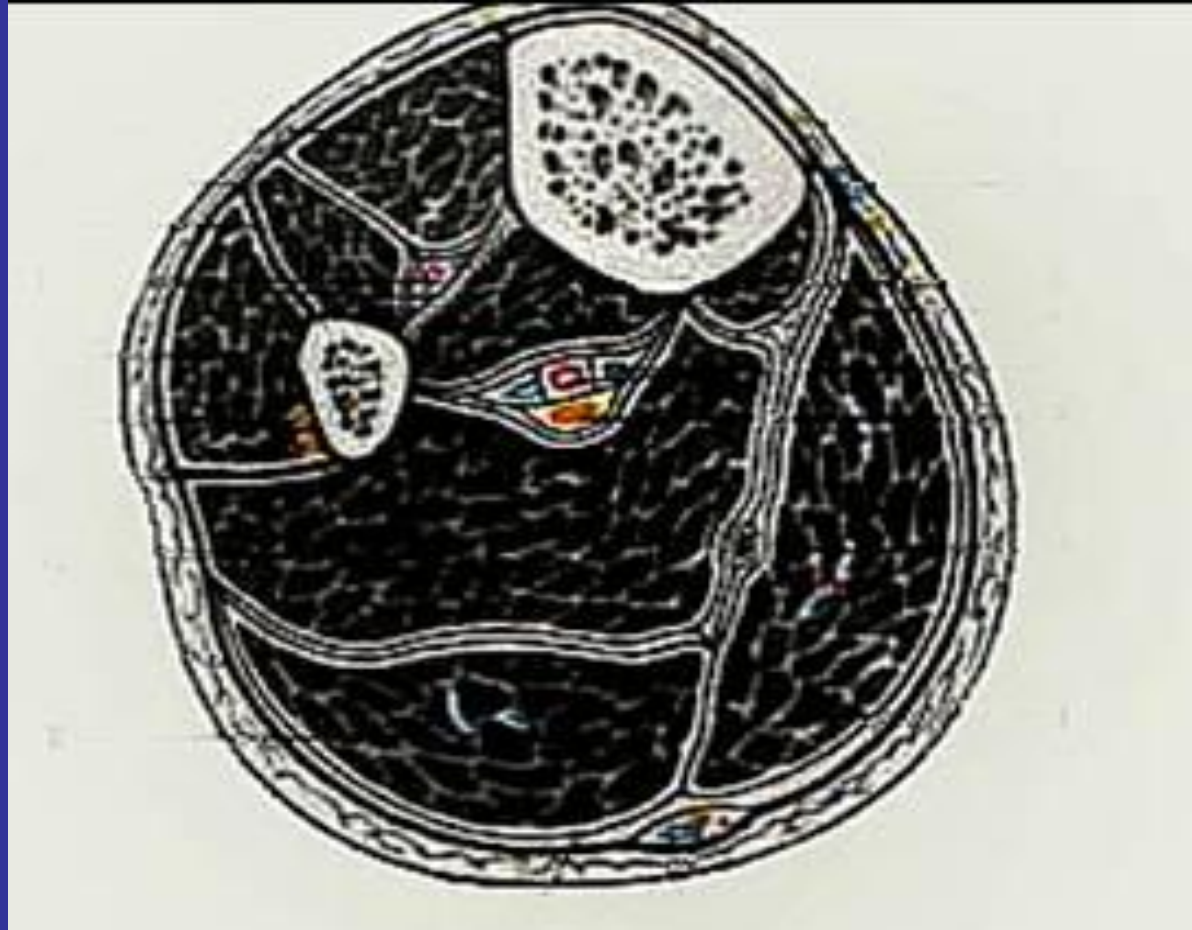


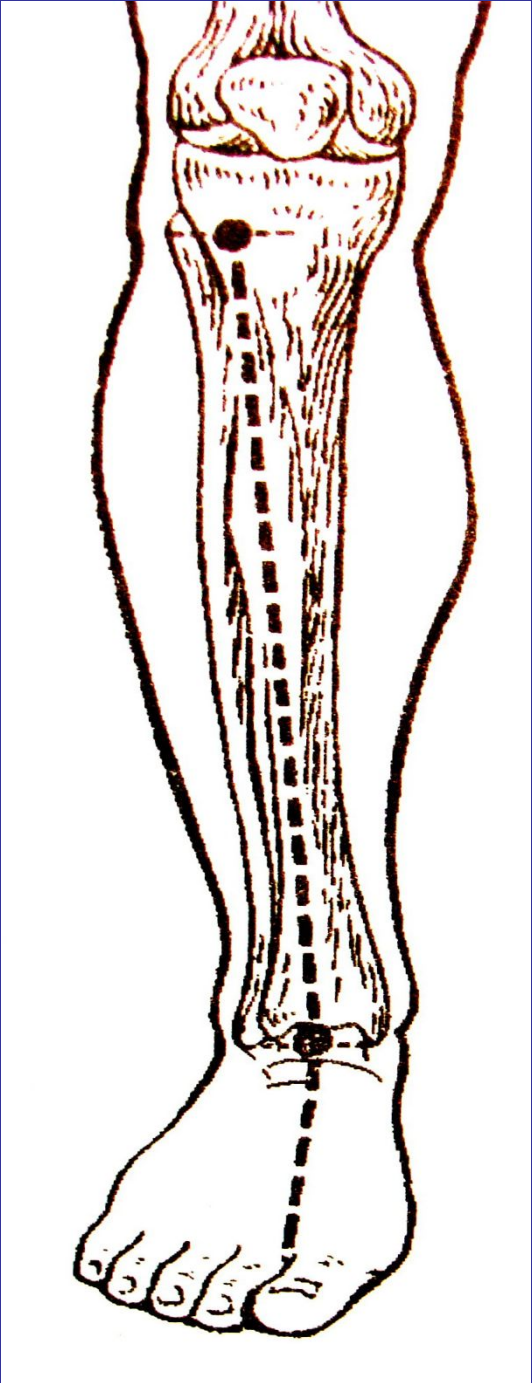
M. abductor digiti
 Tendo musculorum
 apud pedem et i.
 superior magis
 A. et V. poplitea
 M. vastus medialis
 M. semitendinosus
 Tendo. semitendinosi
 Tendo. alibi tibi. crurali
 Pars poplitea femoris
 A. pars superior medialis
 V. poplitea obliqua
 A. pars inferior medialis
 Tendo. m. gastrocnemii
 M. popliteus
 Tendo. m. solei medialis
 V. sapientia tibia

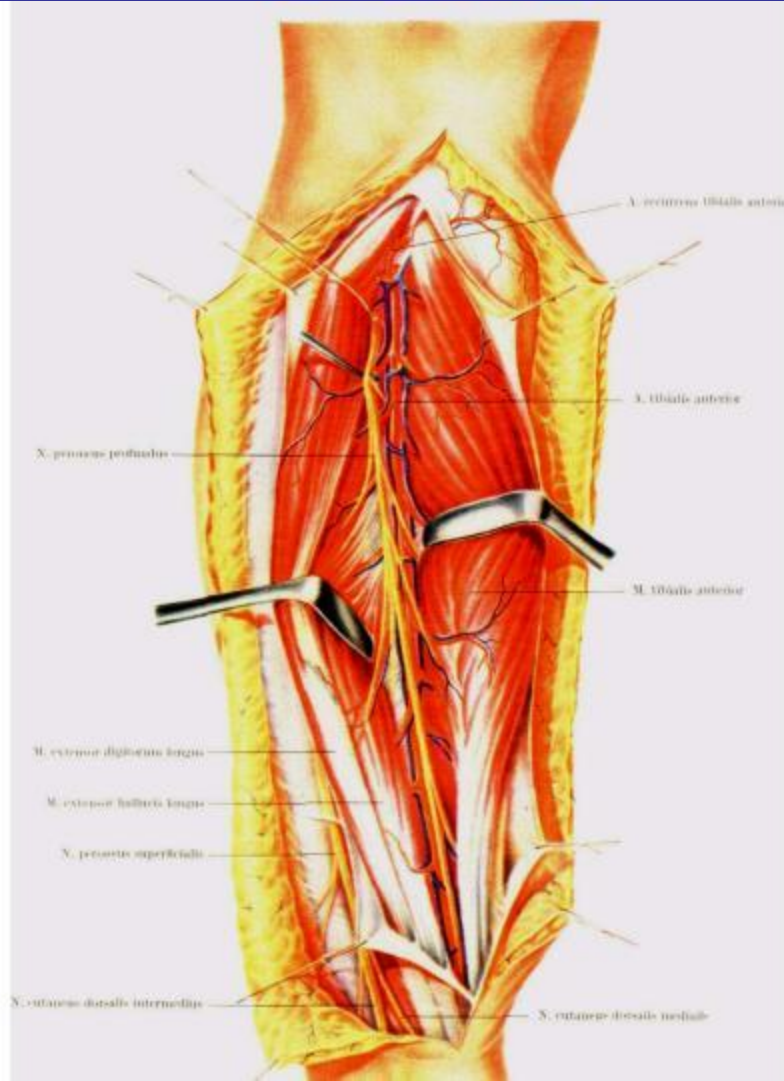
N. peroneus communis
 M. biceps femoris
 N. tibialis
 N. cruris superior
 lateralis
 N. cruris inferior
 lateralis
 A. cruris medialis
 A. cruris lateralis
 lateralis
 M. plantaris
 Caput laterale
 m. gastrocnemii
 M. soleus

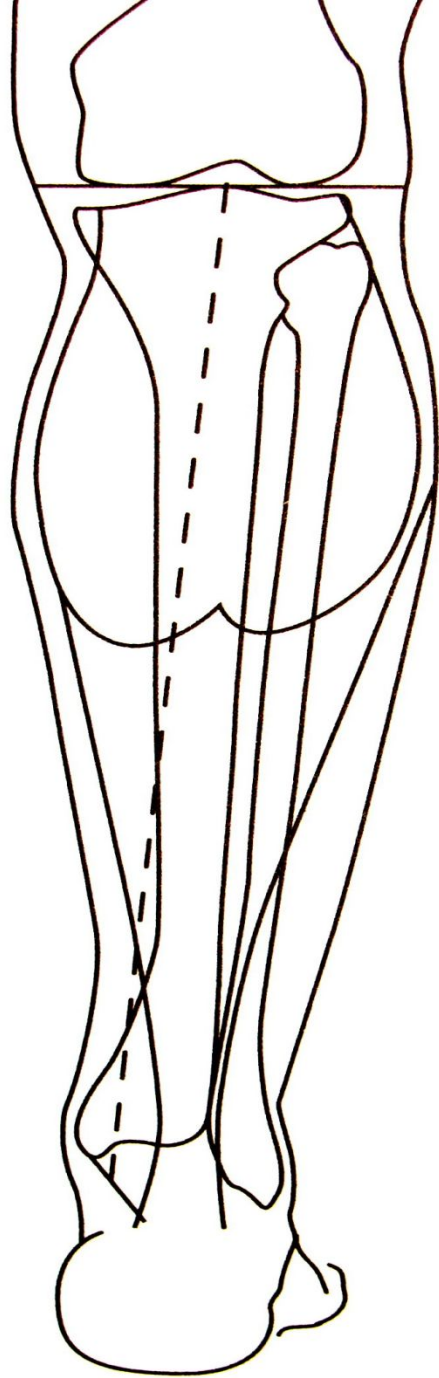


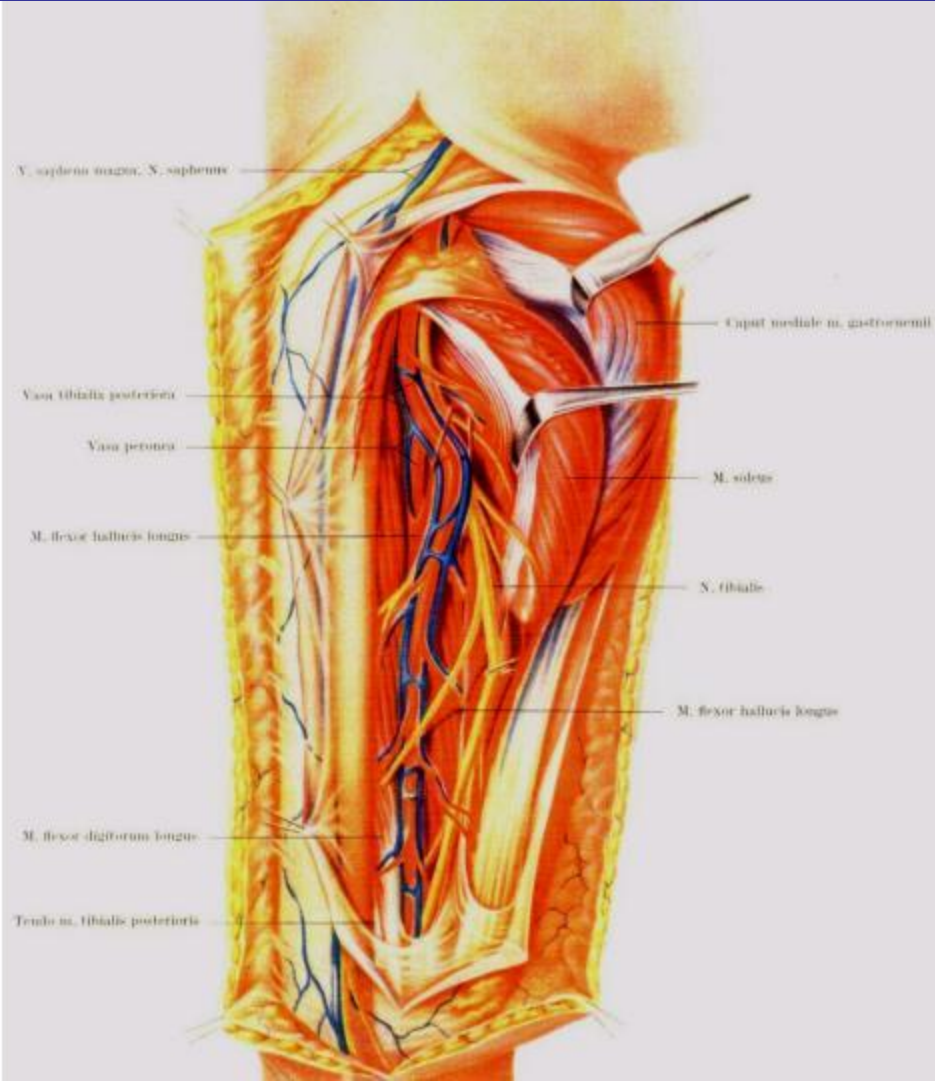


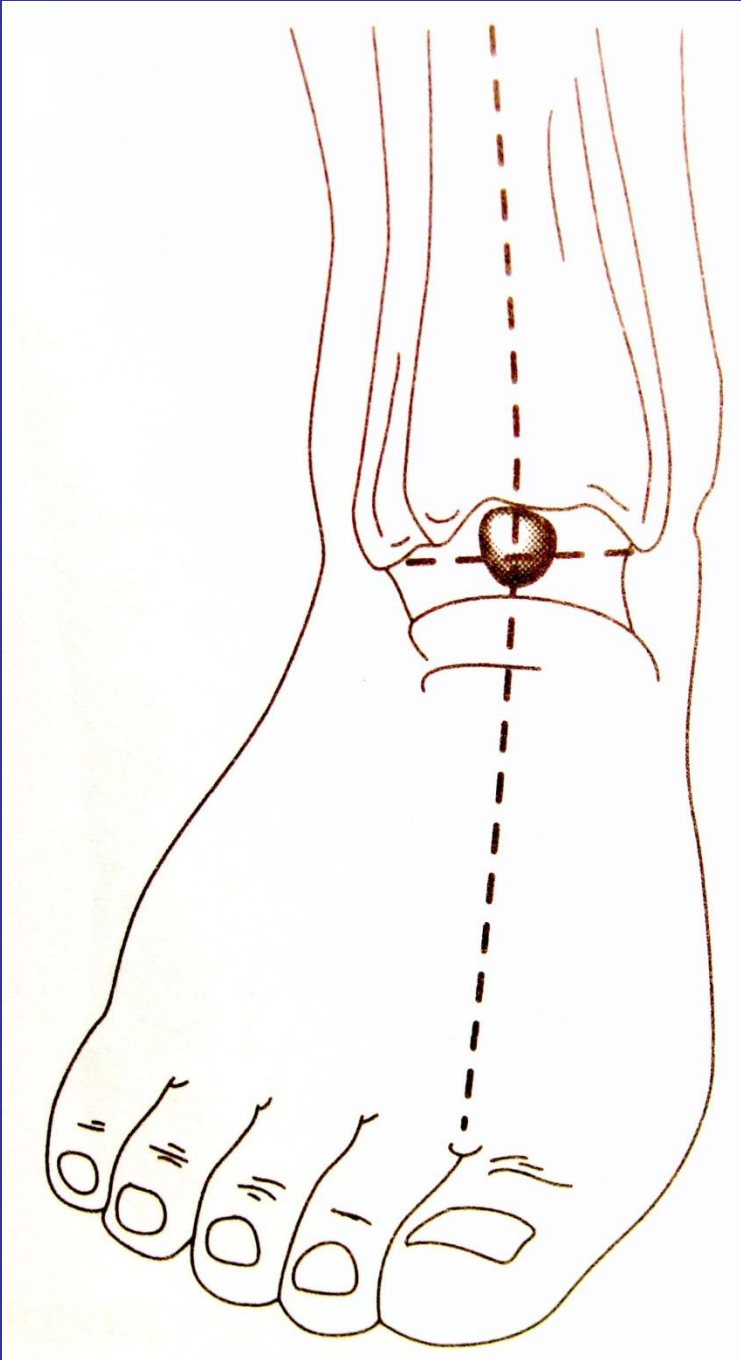


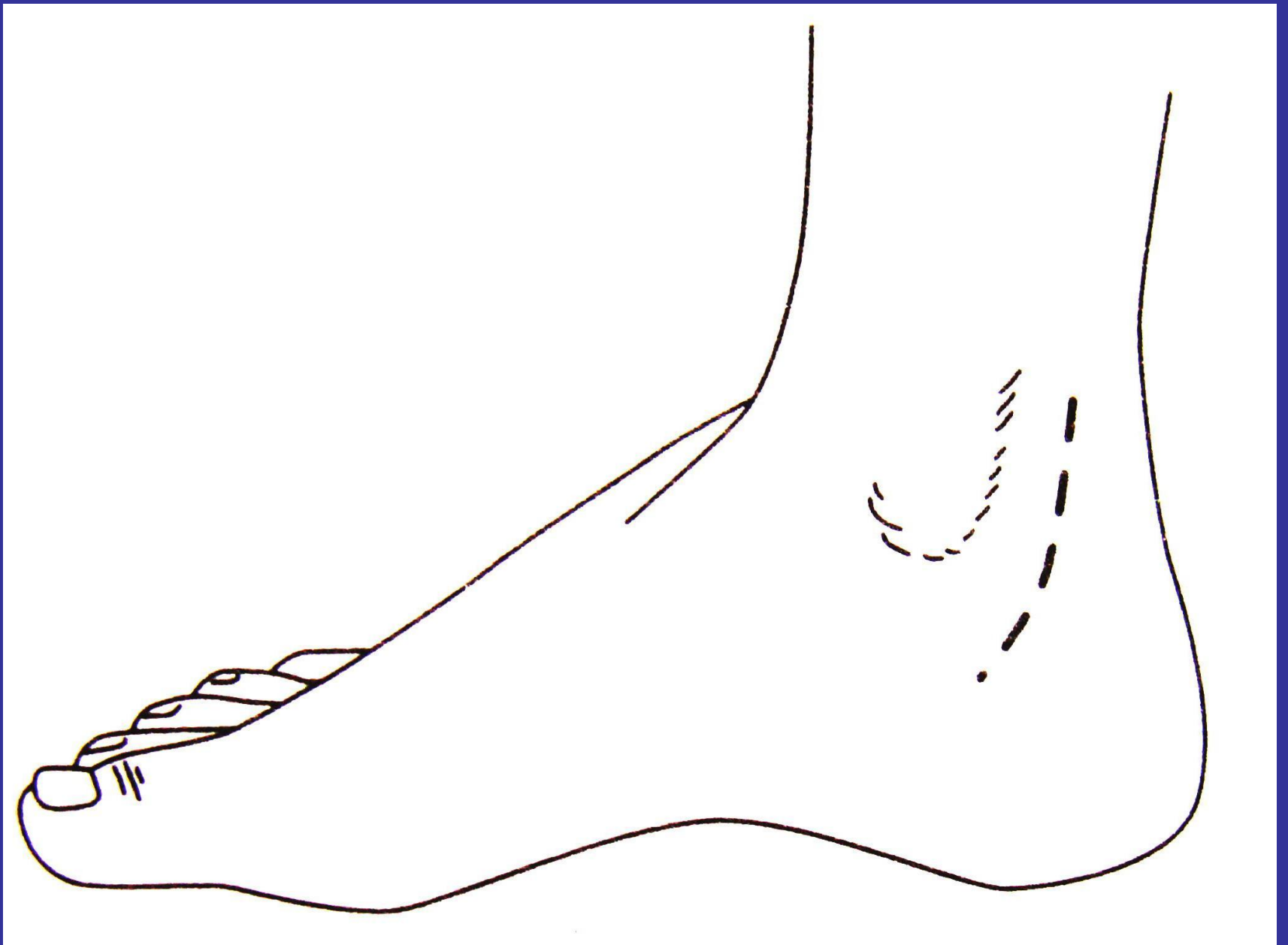


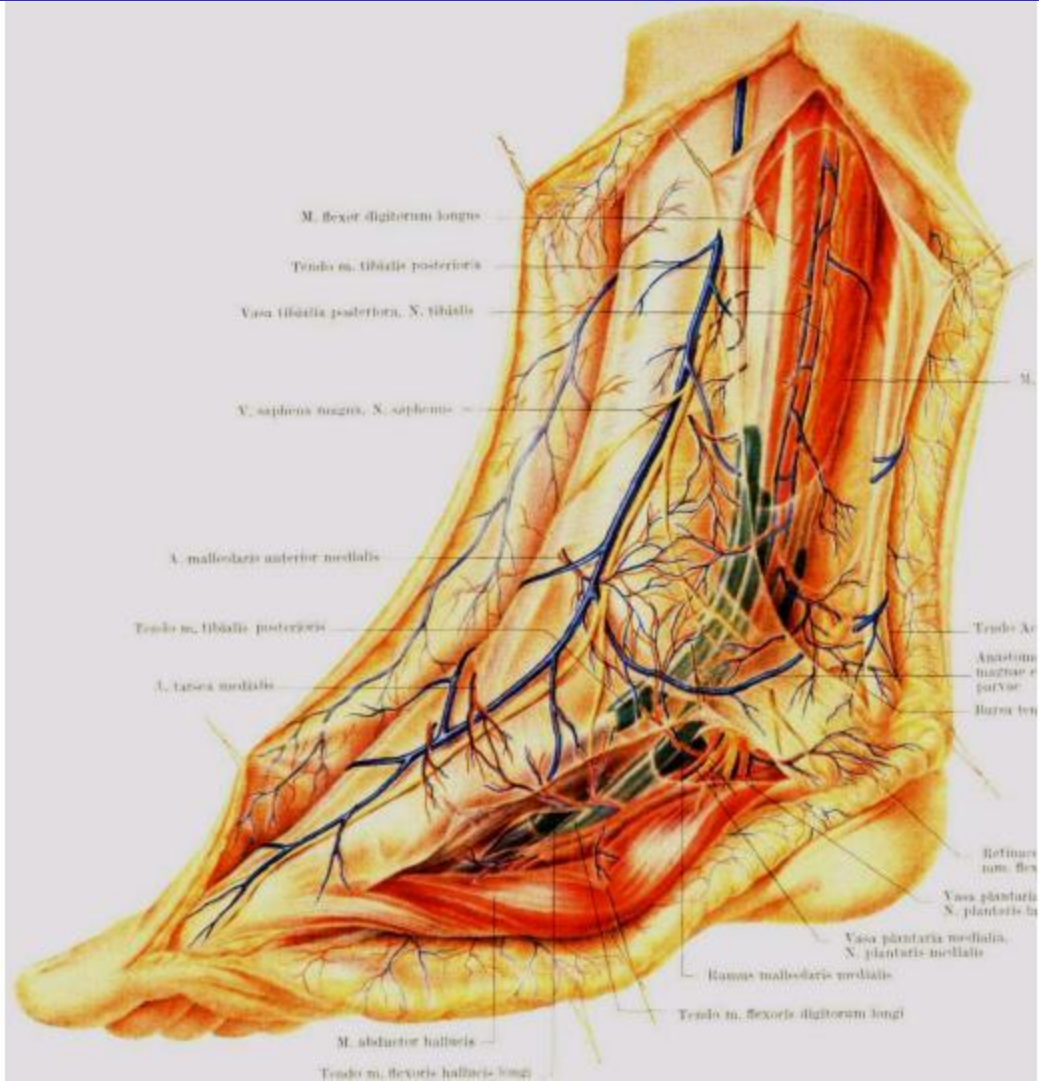














10.04.201