The background of the image is an underwater scene. The top half shows the surface of the water with ripples and light reflections. The bottom half shows a sandy or silty seabed with a bright light source, likely the sun, creating a lens flare effect and illuminating the water from below. The overall color palette is dominated by blues and greens in the upper portion, transitioning to yellows and browns in the lower portion.

**И СНОВА О ВОДЕ**





O

H

H







**ОБЛАДАЕТ ПАМЯТЬЮ** **ТЯЖЕЛА**  
**Я**

**ЖИВАЯ** **ИМЕЕТ СТРУКТУРУ**

**ОБЛАДАЕТ ЭНЕРГЕТИКОЙ**

**МЕРТВА**  
**Я**

**ПОЛИМЕРНАЯ** **СЛЫШИТ**  
**МУЗЫКУ**



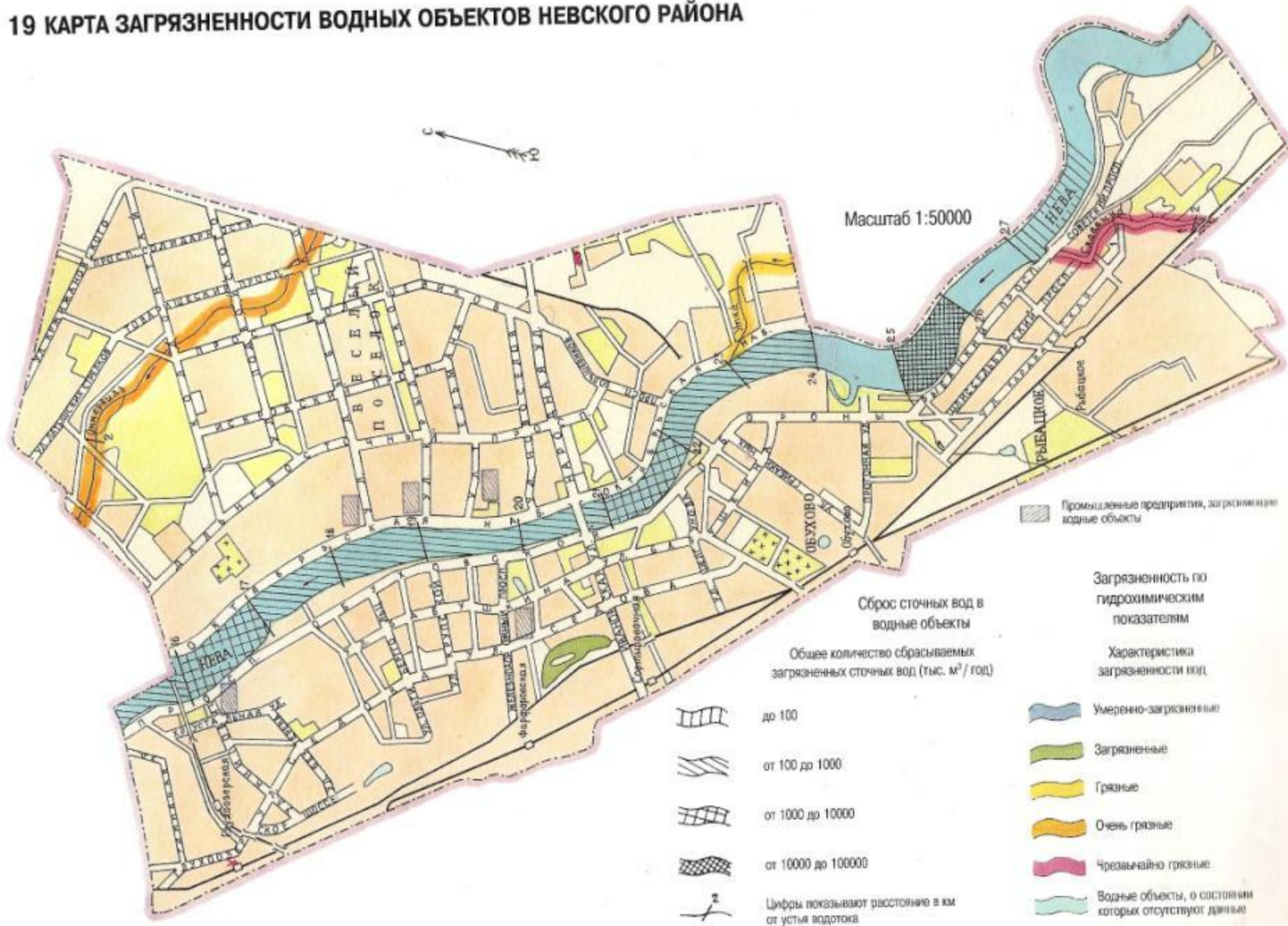




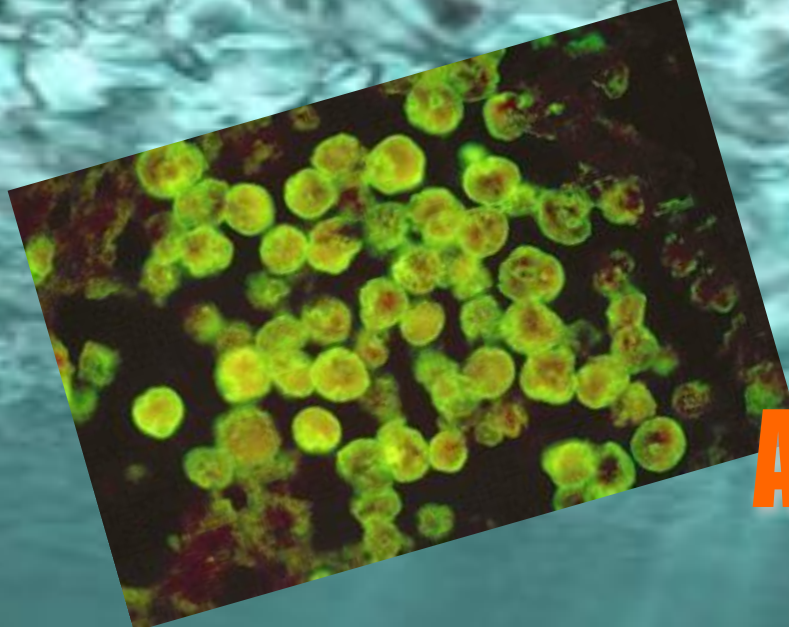




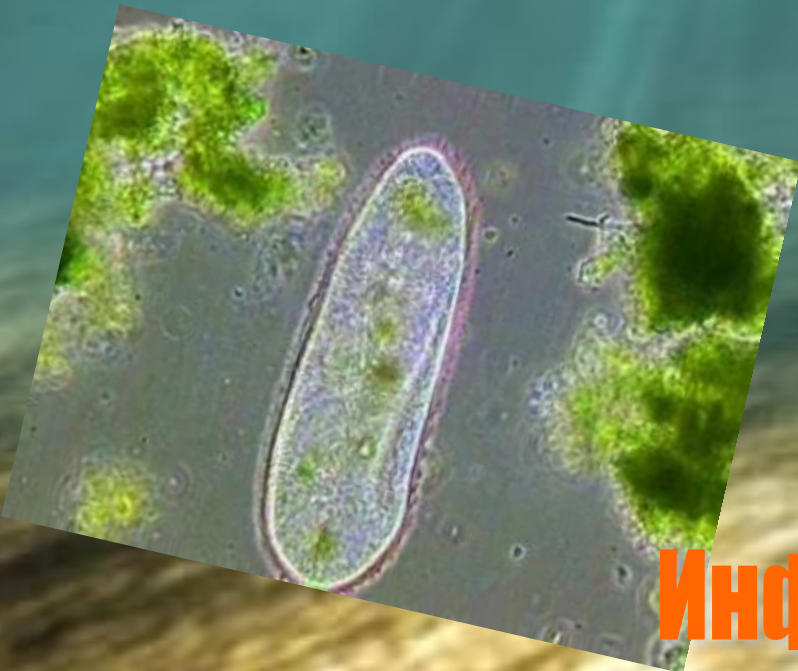
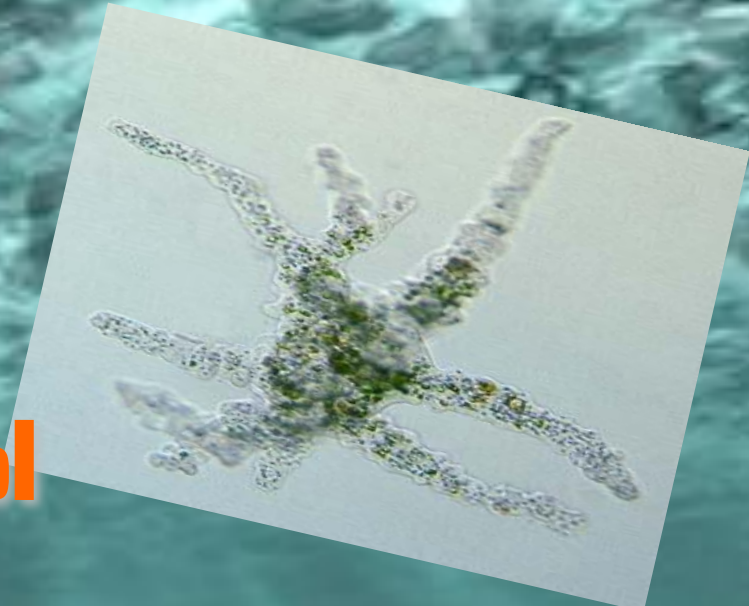
# 19 КАРТА ЗАГРЯЗНЕННОСТИ ВОДНЫХ ОБЪЕКТОВ НЕВСКОГО РАЙОНА



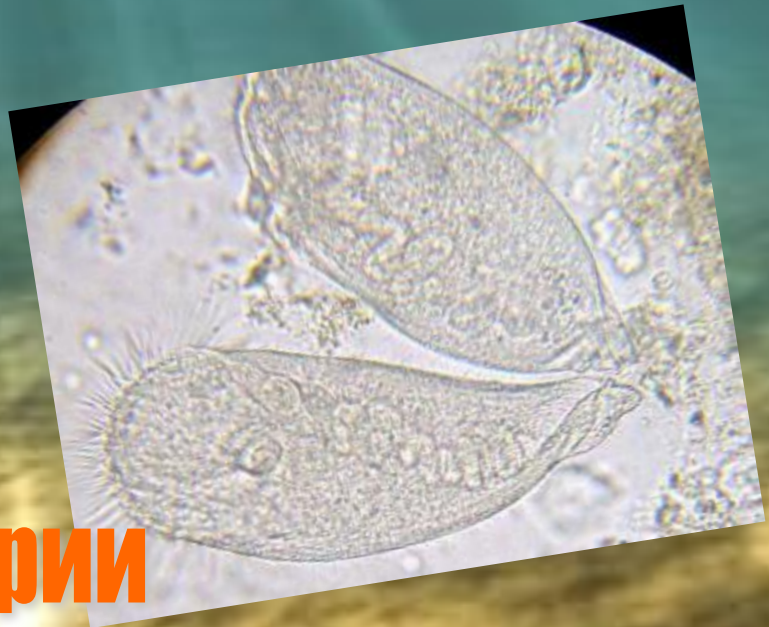




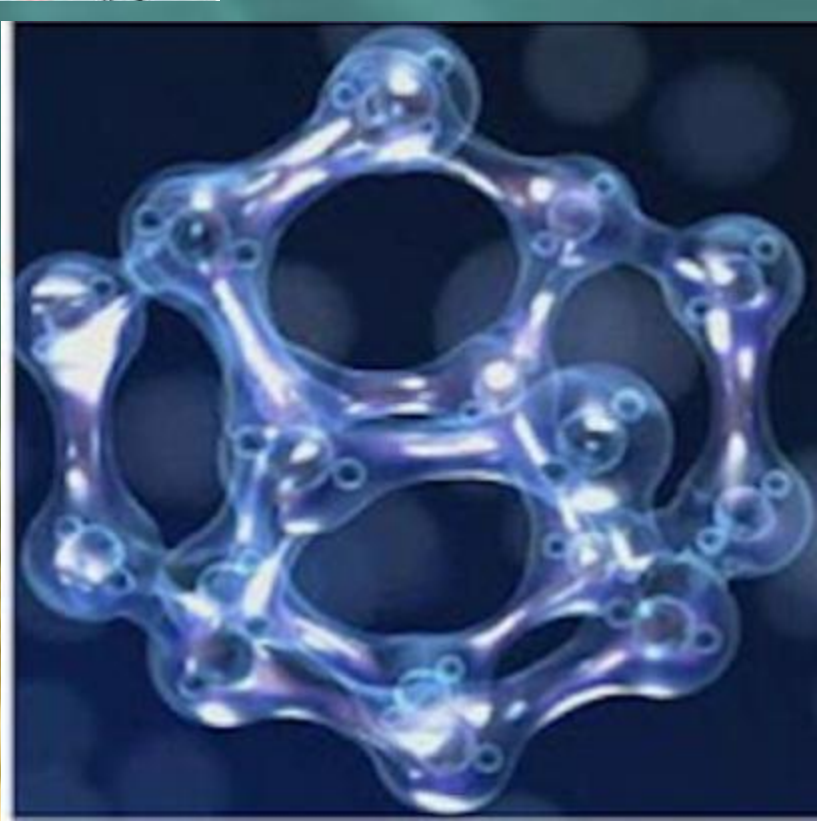
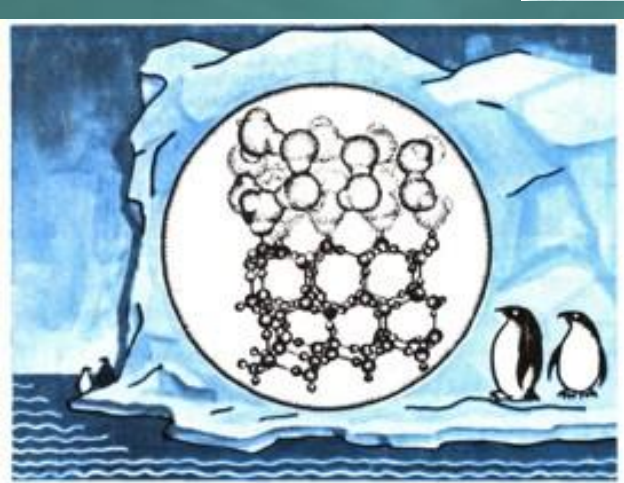
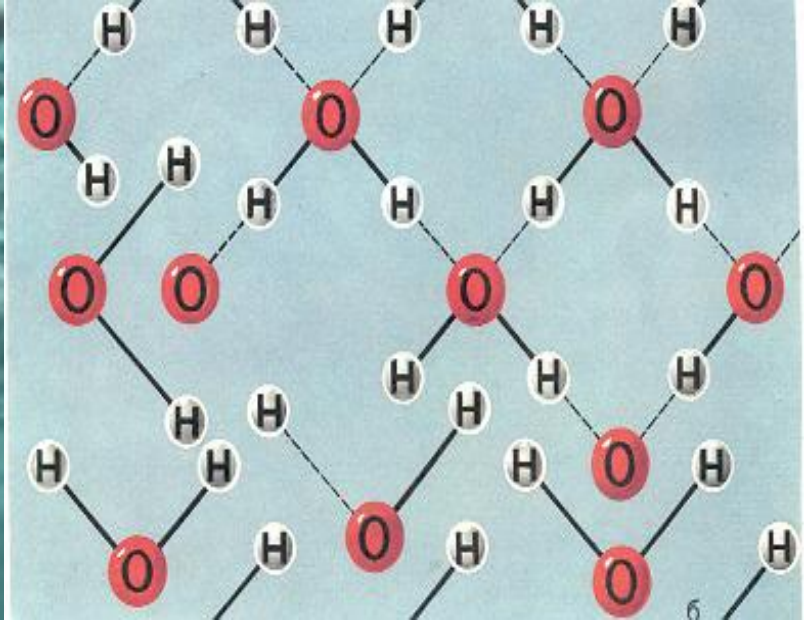
**Амёбы**



**Инфузории**









107,8

Ag

47

Argentum





# Гималаи







# озеро Манасаровар







# озеро Ракшас

[WWW.TIBET.RU](http://WWW.TIBET.RU)















**Живая**

**X=3**



**X=3**

**Мертвая**

**X>20**











the Zodiac

art by KAGAYA

© 2011 KAGAYA / © 2011 BETHINKERS / CD-ROM 51-008