

National Park «Elk Island»

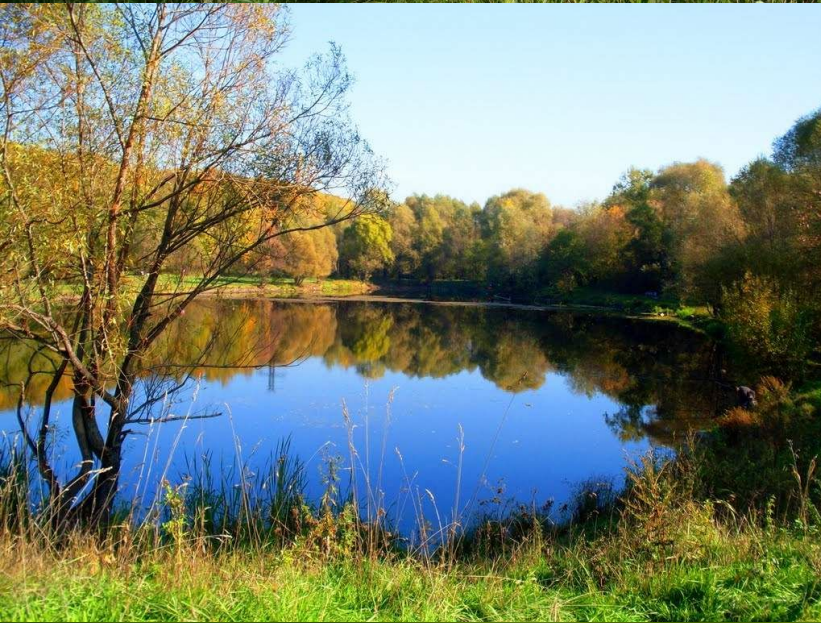


Presentation by: Sofia Malinina
School: MBOU School №10, Vladimir
Teacher: I. V. Nazarkina

As you know, there are a lot of great reserved places in Russia but I would like to tell you about National Park «Elk Island». It is situated to the north-east of Moscow. Actually, it is the ideal place for lovers of forests, fresh air and wild animals. Visiting this park is a wonderful opportunity to relax and to be alone with nature.



Flora of The «Elk Island»



The large area of the national Park is a vast coniferous, birch and deciduous forests, meadows and marshes. This primordial nature is complemented by trees and ponds. The most unique object on the territory of the «Elk Island» is Alekseevskaya Roshcha. It is a part of the forest, in which most of the coniferous trees are more than 250 years.

In «Elk Island» grows the lily of the valley, the globe, one can meet the corydalis dense, the wolf bark, the iris yellow, the orchid Fuchs and other specially protected plants in the area of Moscow and Moscow region.



Fauna of The «Elk Island»

The natural conditions of the upper reaches of the Yauza river are a great habitat of wild animals. Spotted deer, beavers live here, muskrats build their huts, you can often see the original inhabitants of the Park – elk and wild boars. Common species are foxes, hares, minks, squirrels, often snakes, vipers, lizards, amphibians - frogs, toads are found.



Spring forests are full of birds: warblers, tits, thrushes, buntings, redstarts, and many other small birds.



One of the main tasks assigned to the national Park is a preservation of the natural complexes. The State Inspectorate and hunter service are created in the National Park «The Elk island» . The State Inspectorate monitor protection of the Park and respect the visitors of the regime. The hunter service has a base in the Central part of the Park and is engaged in anti-poaching, wildlife conservation, feeding animals in the winter.





THANKS FOR YOUR ATTENTION!

Sources

<http://elkiland.ru>

https://ru.wikipedia.org/wiki/%D0%9B%D0%BE%D1%81%D0%B8%D0%BD%D1%8B%D0%B9_%D0%9E%D1%81%D1%82%D1%80%D0%BE%D0%B2

<http://sergei2904.narod.ru/los/priroda/fauna.htm>