


Passive Voice

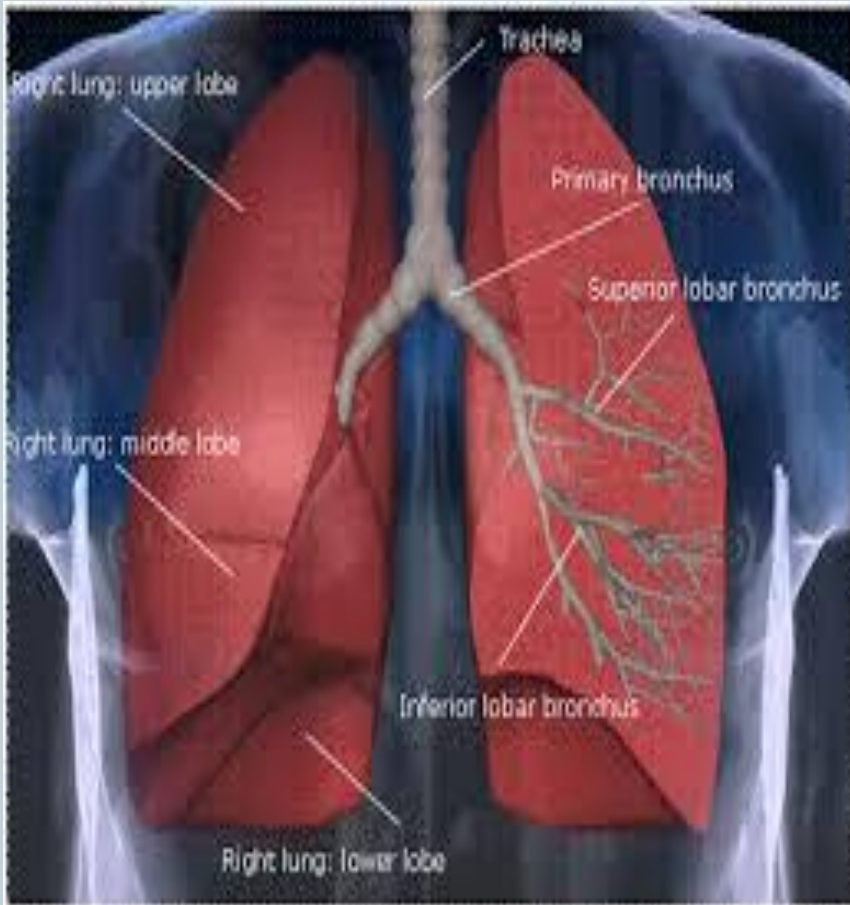
Modal verbs

Lobular pneumonia



Выполнил студент 2-0650М Кымбатов
Рашид
Проверила: Дашкина Т.Г.

● Lobular pneumonia



Lobar pneumonia usually has an acute progression. Classically, the disease has four stages. Congestion in the first 24 hours: This stage is characterized histologically by vascular engorgement, intra-alveolar fluid, small numbers of neutrophils, often numerous bacteria.

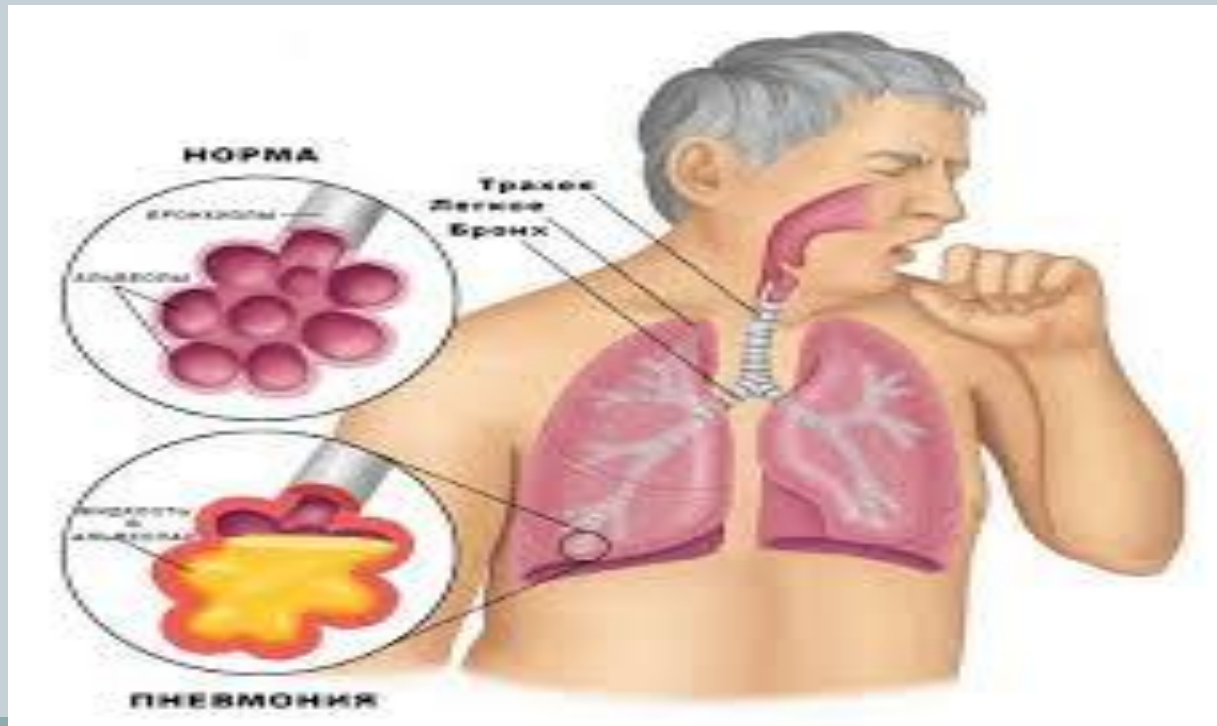


- Red hepatization or consolidation : Vascular congestion persists, with extravasation of red cells into alveolar spaces, along with increased numbers of neutrophils and fibrin. The filling of airspaces by the exudate leads to a gross appearance of solidification, or consolidation, of the alveolar parenchyma. This appearance has been likened to that of the liver, hence the term "hepatization".

- Grey hepatization : Red cells disintegrate, with persistence of the neutrophils and fibrin. The alveoli still appear consolidated, but grossly the color is paler and the cut surface is drier.

- **Lobular pneumonia** is an acute exudative suppurative inflammation of the lungs characterized by foci of consolidation surrounded by normal parenchyma.

Generally, it is produced by bacteria : staphylococcus, streptococcus, Haemophilus influenzae, proteus, Escherichia coli.



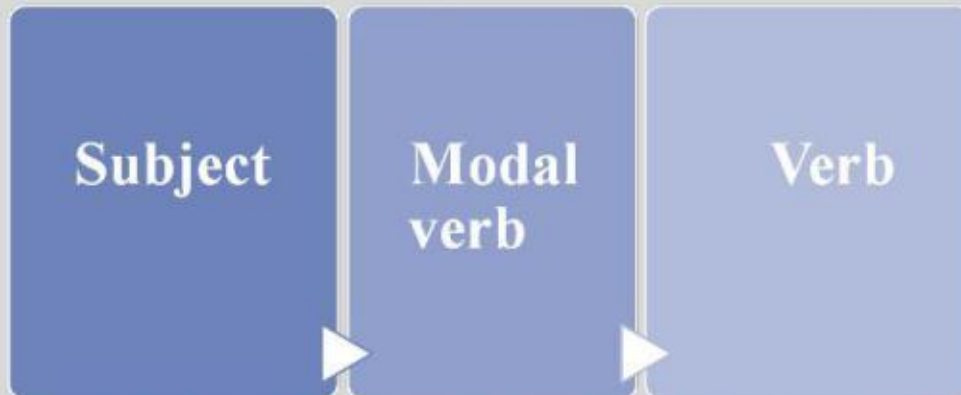


Modal verbs

What are modal verbs?

*Модальные глаголы выражают не действие,
а отношение к действию.*

*Они придают дополнительное, специфическое
значение главному глаголу предложения.*





Модальные глаголы (Vmodal)

► К группе модальных глаголов относятся следующие глаголы:

- 1) **can (could)** – могу, умею
- 2) **must** – должен, обязан
- 3) **should** – следует (сделать)
- 4) **may** – можно
- 5) конструкция “**be able to**” – могу, умею



Passive Voice

- Употребляется обычно когда неизвестно, кто выполняет действие
- В английском языке употребляется чаще, чем в русском.
- Подлежащее в таких предложениях пассивно, на него направлено действие.



Examples

- Dry rales were heard by the doctor.
- The blood analysis were made by doctor Belova.
- Abnormal respiration, dullness in the left lung, numerous rales were revealed by physical.
- The tablets were administered by doctor Belova.