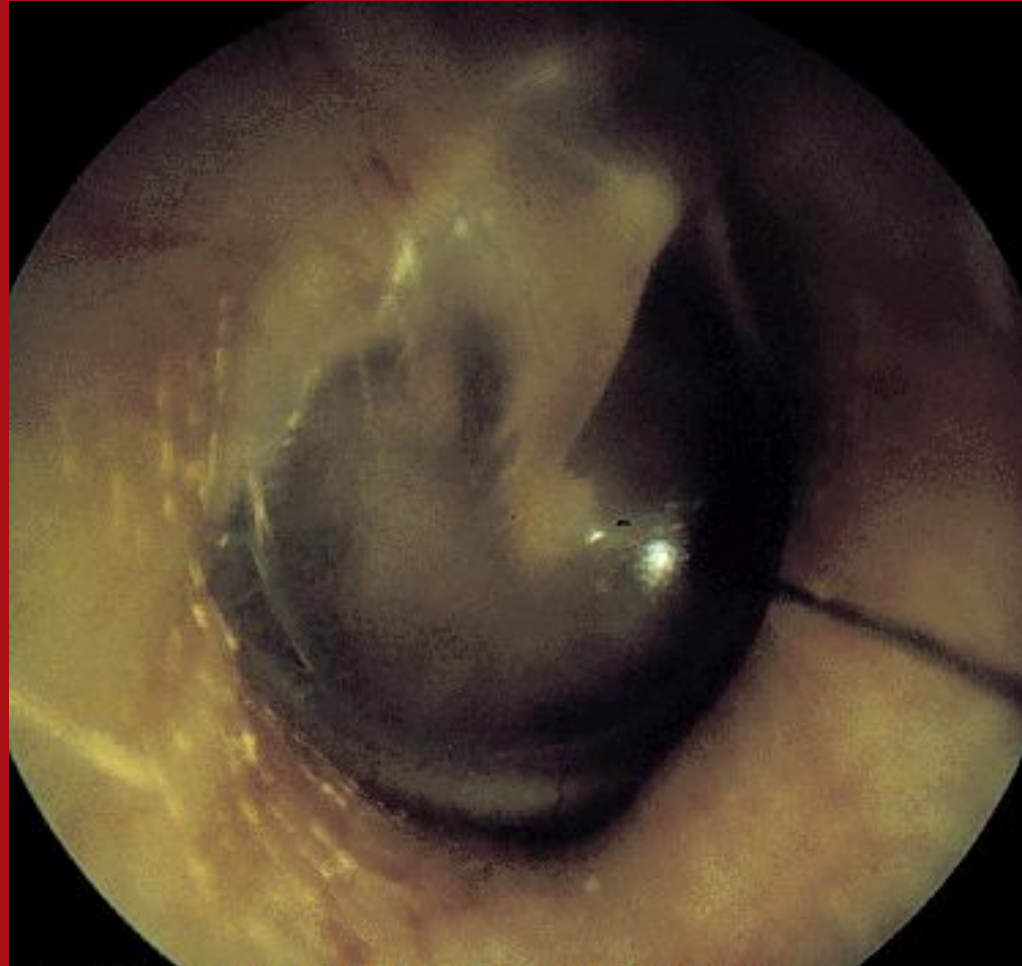


Physical Diagnosis in Otolaryngology

Department of Otolaryngology, Head & Neck Surgery
Loyola University Medical Center
Maywood, Illinois

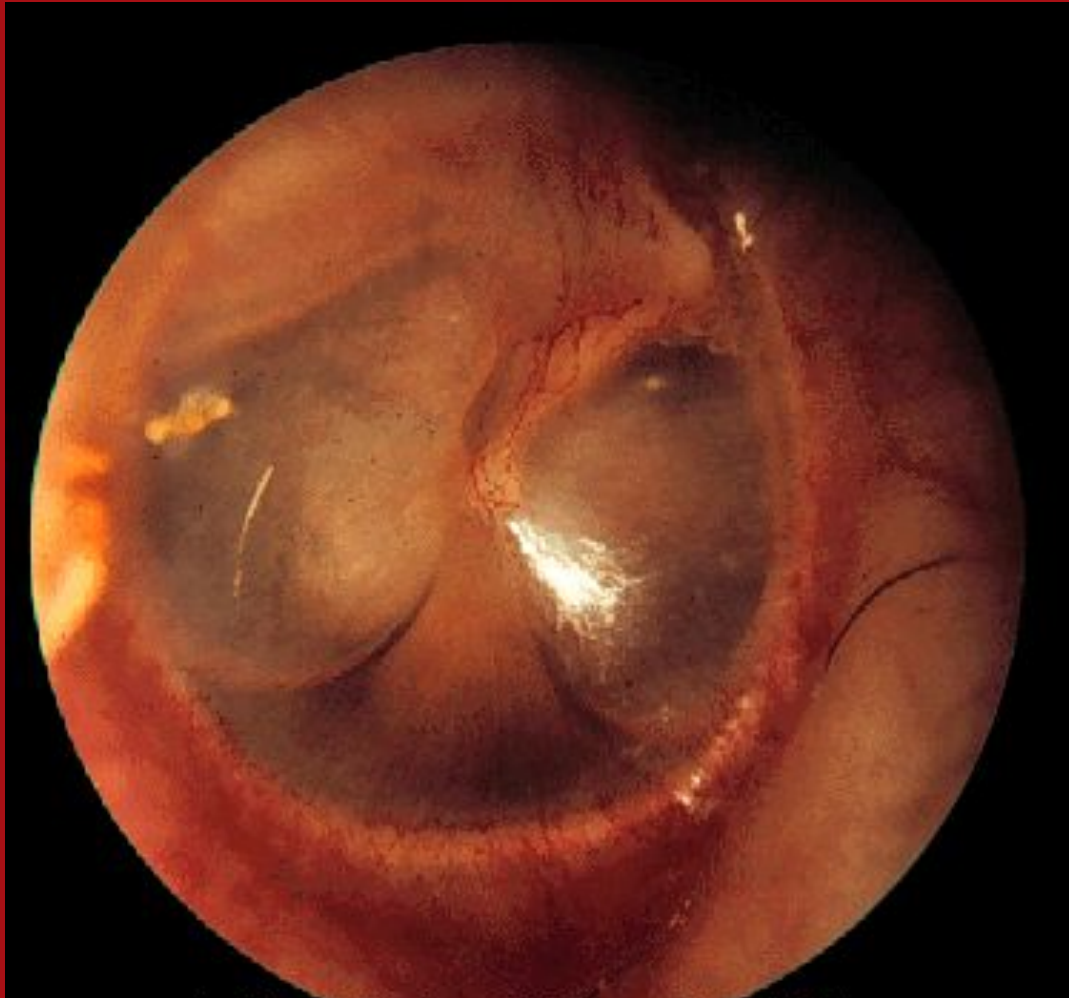
Normal Tympanic Membrane



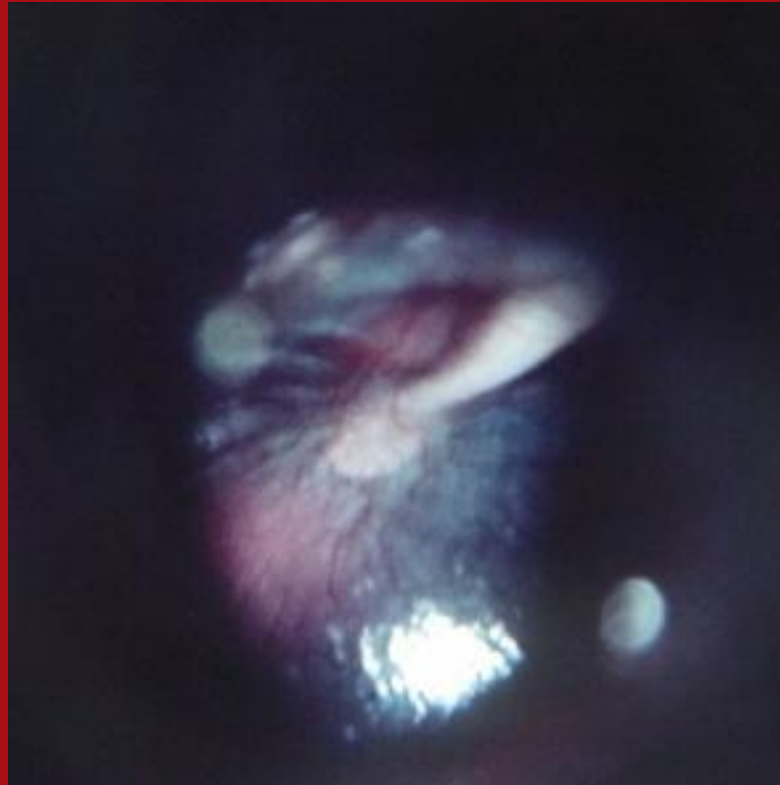
Acute Otitis Media



Serous Otitis Media



Hemotympanum



P.E. Tube



copyright Michael Hawke MD

Tympanic Membrane Perforation Partial



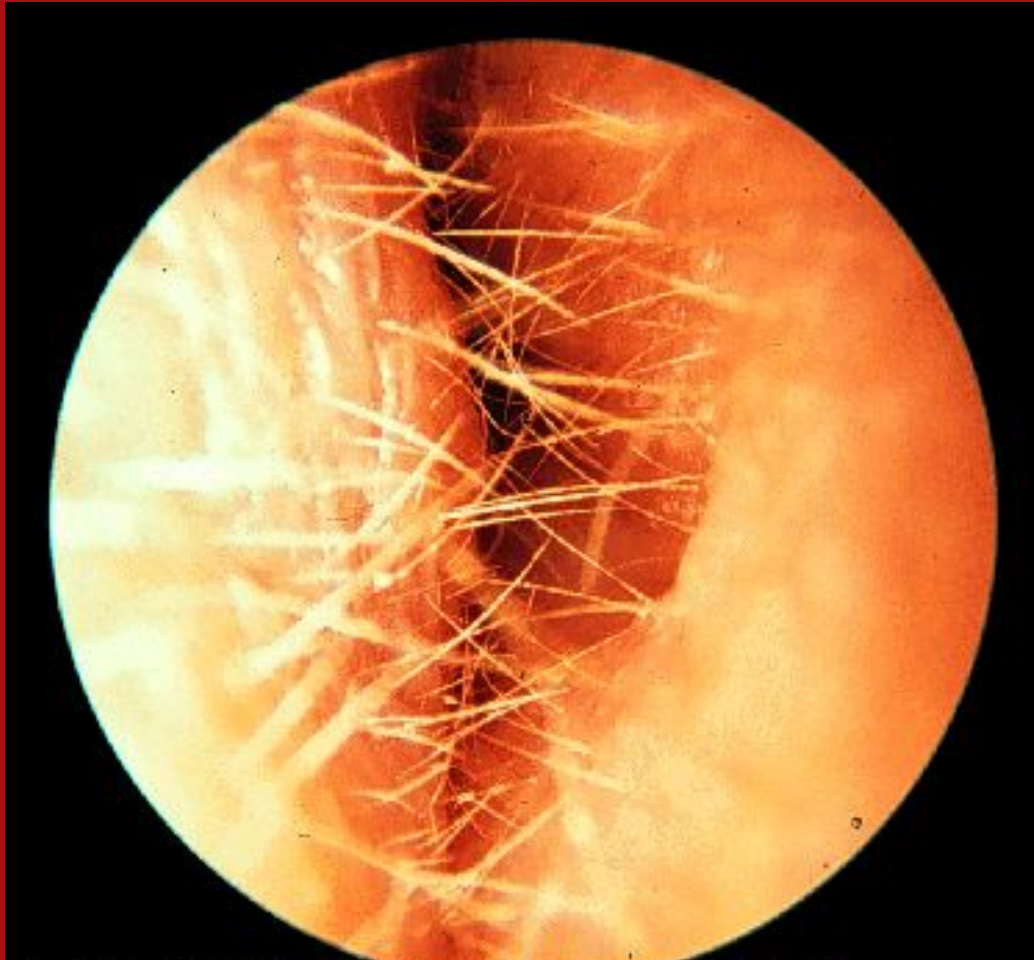
Tympanic Membrane Perforation Near Total



External Auditory Canal Foreign Body



Otitis Externa



Otowick in EAC



Nasal Polyp



Middle Turbinate Adhesions



Middle Meatus- Maxillary Sinus Ostium



Normal

Purulent Drainage



CT Scan - Sinusitis



Allergic Rhinitis



Nasal Septal Perforation



Nasal Bone Fracture



Septal Hematoma



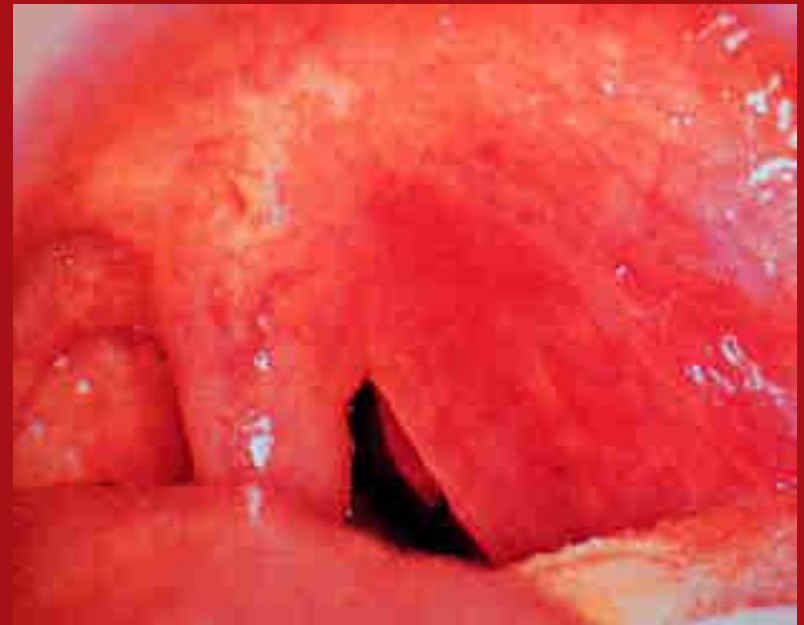
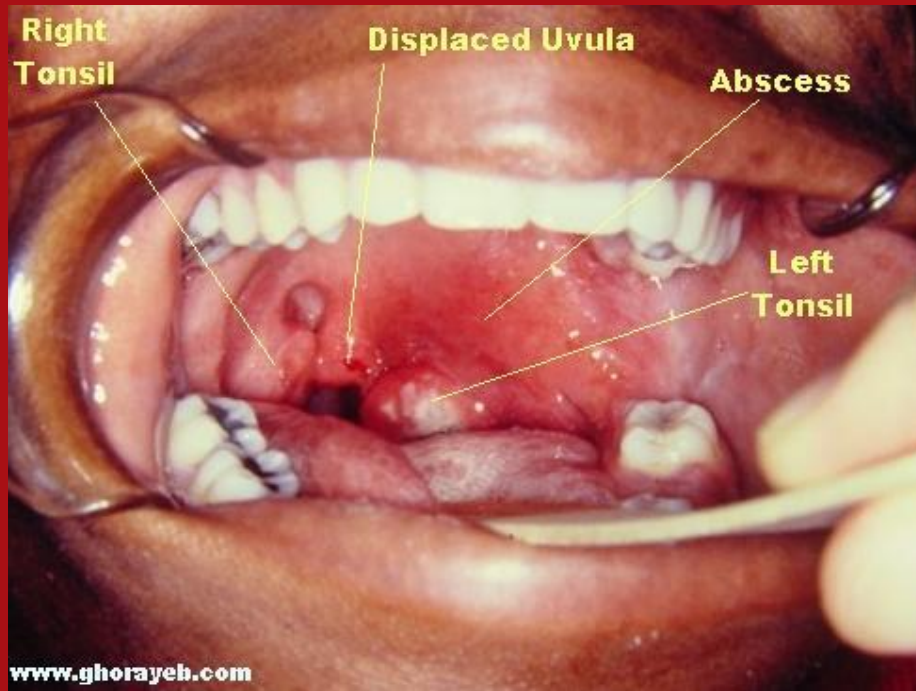
Acute Tonsillitis



Post-tonsillectomy



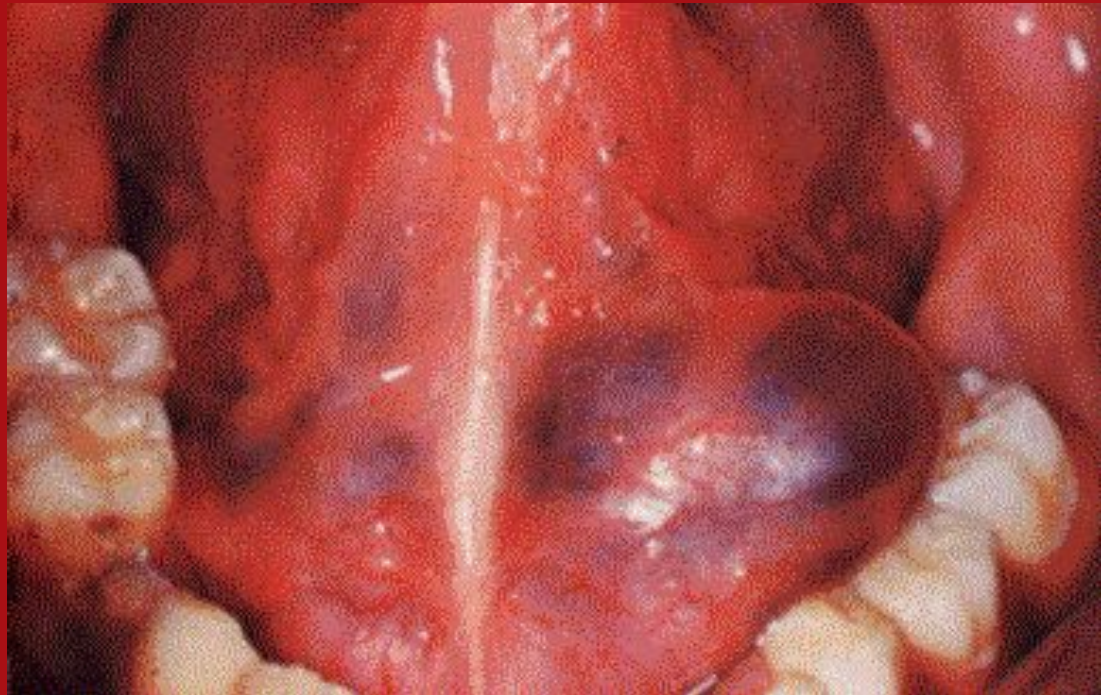
Peritonsillar Abscess



Cleft Palate - Bifid Uvula



Ranula



Squamous Cell Carcinoma of Tongue



Ulcerative

Exophytic



Minor Salivary Gland Tumor



Parotitis



Pleomorphic Adenoma-Parotid



Thyroglossal Duct Cyst



Branchial Cleft Cyst



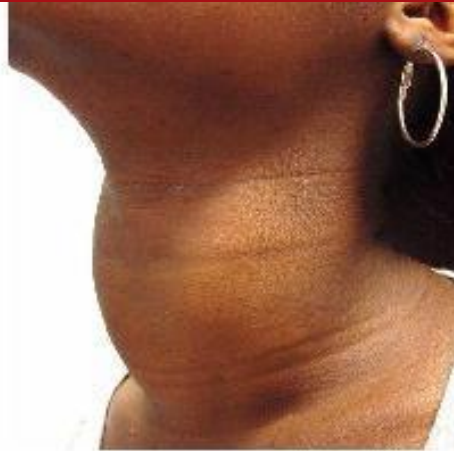
Enlarged Thyroid



Neck Masses



Branchial Cleft Cyst



Goiter



Infected Cyst



Submental Cyst



**Lymph Node
Metastasis**



**Submandibular
Abscess**