

+ 1111

**A place in the country side
when you can catch a fish,
swim and spend time with your friends**

? = CHILL OUT

THIS THING HELPS TO GET A PERFECT

■ ■ ■ ■ ■



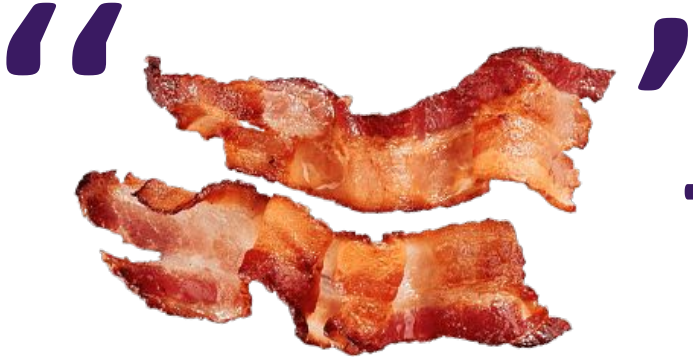
TRY TO GUESS: WHAT IS IT?



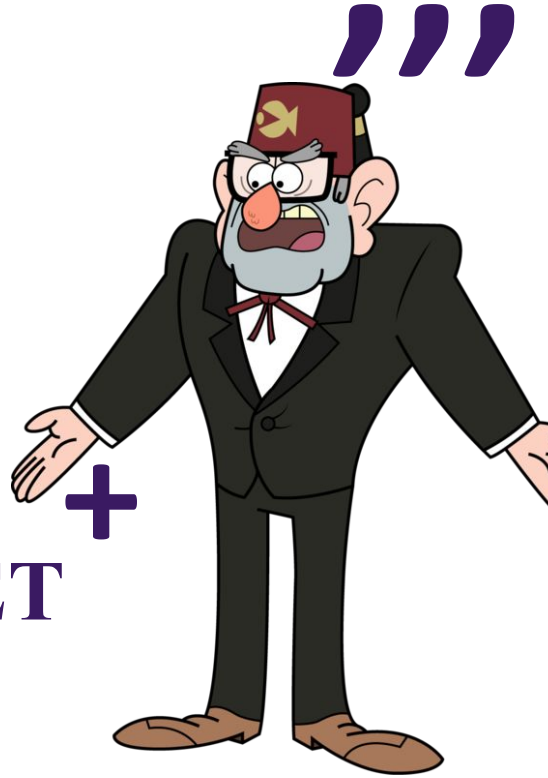
g	h	d	s	y	n
b	e	z	r	t	u
f	w	g	e	m	i
e	e	e	k	e	d
h	h	k	l	n	l
a	n	e	m	r	u
c	d	k	e	k	m
w	p	o	g	h	o

**WHAT DOES THE SINGER
WANT TO TAKE WITH HIM?**





THE FIRST
+ LETTER OF +
THE ALPHABET



**A PLACE BORDERING WATER
WHICH YOU VISIT WITH
YOUR PARENTS EVERY SUMMER**

**THIS HOTEL IS SO...
WE CAN'T AFFORD IT BECAUSE
WE DON'T HAVE ENOUGH MONEY
IN OUR PURSE**