



**EXXA**

ENGAGE • X'CHANGE • X'PEND • ACHIEVE

Your One-Stop Blockchain

**Wealth Management Platform**



SQ2 Fintech Pte Ltd



Share Holders  
25%

Share Holders  
Danny Pang (20%)  
Frankie Lee (20%)  
Michael Chia (28%)  
Gregory Ang (7%)  
SQ2 Fintech (25%)





**AARON LOO**  
Managing Director



# Partners



**FRANCIS AW**  
Chief Operations Officer

# Customers



**ANTHONY LAU**  
Chief Executive Officer



## Danny K. Pang Chief Executive Officer

Danny K. Pang is the CEO of AXXA Global with more than 26 years of experience in this industry. He is widely known for his proven sales-driven leadership and team-building Abilities

He developed into a global network spanning across 22 countries with more than 300,000 members

His drive for jump-starting business inspires the team along with his unparalleled industry experience and leadership. Danny's network marketing career started in the United States of America twenty four years ago where it developed into a global network spanning across

Danny is also co-founder of Rain International (circa 2010)

**Hong Kong Office**  
13/F, Unit 1308, Mirror Tower,61  
Mody Road, Tsim Sha Tsui

**Singapore Office**  
17, changi South St 1  
Singapore 4867814

**Taipei Office**  
2/F, 16<sup>th</sup> Floor, No 163  
Keelung Road, Xinyi District,  
Taipei City

**Thailand Office**  
120/31 Moo 12 Soi Kingkaew  
21/2, Kingkaew Rd, Rachathewa  
Bangplee, Samutprakarn 10540  
Thailand

**Hungary Office**  
1092 Budapest, Raday Utca  
19

**Kaohsiung Branch Office**  
6<sup>th</sup> Floor, 30<sup>th</sup> Floor, No 3  
Ziqiang 3 Road, Yuya district, Kaohsiung  
City



**Kuala Lumpur Office**  
7-10, The Boulevard Mid Valley  
City  
Lingkaran syed Putra 59200  
Kuala Lumpur, Malaysia

**Kuching Branch Office**  
254, Ground Floor, Teck Guan  
Building  
Jalan Padungan, Guching Sarawak  
Malaysia

**Indonesia Office SOHO CA**  
PITAL, Podomoro City, 26<sup>th</sup> Floor  
Suite SC-2609, Jl Let Jend S Parman  
Kav 28, Tanjung Duren Selatan,  
Grogol  
Petamburan, Jakarta Barat – 11470  
Indonesia

**Taichung Office**  
403, 31<sup>st</sup> Floor, No 16, Section 2  
Taiwan Avenue, West District  
Taichung City





## Frankie Lee (Founded) CEO & Chairman of BNF Group

Frankie Lee with a team of highly qualified management team and functional group personnel, BNF has expanded into an existing 350 workforce, whom are highly motivated and focused

BNF Group core competency resides in being able to respond to the needs of the market. This enables us to capitalize on good business opportunities by responding flexibly to a continually changing business environment. By doing so, we are able to sharpen our existing strengths and establish a platform for future new business initiatives Our ability to do that stems from our foresight and culture of collaborating with our strategic business partners in diverse industries. The result of such practice has led to BNF Group being a convergence of diverse businesses today.







St. John's Island

BNF Engineering is a multi disciplinary company that engages in M&E and A&A fitting works to help our clients optimise the potential of their existing infrastructures.

Our fully integrated building solution enables us to understand to develop a method to maximise efficiency yet bring you the best value possible. Over the years we have covered projects of all sizes.

St. John Island

## National Park HQ

One of the isles situated around Singapore, this place is a delight to visit. BNF does construction as well as M&E for this small island.

National Parks Board HQ

The dedicated body providing and enhancing the greenery in Singapore with the aim to become a city within a garden with their Headquarters in Singapore Botanical Gardens. BNF has done A&A and M&E work to improve the interior.

## Botanical Garden

The Halia @ Singapore Botanical Garden

Nestled in the Ginger garden within Singapore Botanical Gardens serving impeccable food. BNF was appointed to improve the space by building the



National Parks Board (NParks) HQ



The Halia @ Singapore Botanical Garden



**Singapore (Headquarters)**  
**BNF Engineering (S) Pte Ltd**  
No. 17, Changi South Street 1,  
Singapore 486781

**Indonesia**  
**PT BNF Solusi Integrasi**  
Wisma Slipi, 15th Floor, Suite 1508  
Jl. Let. Jend. S. Parman Kav. 12  
Jakarta 11480



Lorong G, G Residence

## Lorong G. G Residence

Lorong G, G Residence

BNF designed and built a modern living space in the bustling Joo Chiat area that still blends in with the atmosphere to create a homely environment. Spacious living area with a modern touch.

Changi Village Mechanised Carpark



Changi Village Mechanised Carpark

## Changi Village Mechanised Carpark

BNF was tasked with building the first HDB Mechanised Parking System (MPS) in Singapore where we also developed the software and application of the parking system. The project helped to solve a parking constraint issue in the area, increasing the number of spaces by two fold.

**Malaysia**  
**BNF Control Sdn Bhd**  
No. 25 Jalan TPP 5/13  
Taman Perindustrian Puchong  
Seksyen 5, Batu 12, Jalan Puchong  
47100 Selangor, Malaysia

**Thailand**  
**BNF Corporation Co., Ltd**  
120/30 Moo 12 Soi Kingkaew 21/2,  
Kingkaew Rd., Rachathewa, Bangplee,  
Samutprakarn 10540  
Thailand

RECENTLY VIEWED COMPANIES

**UNITED MOTOR WORKS PTE LTD**  
Private Company

**APPLE INC**  
223.59  
▲ +6.89

**FANNIE MAE**  
3.18  
▲ +0.21

**MARK ANTHONY BRANDS INC**  
Private Company

**AT&T INC**  
38.74

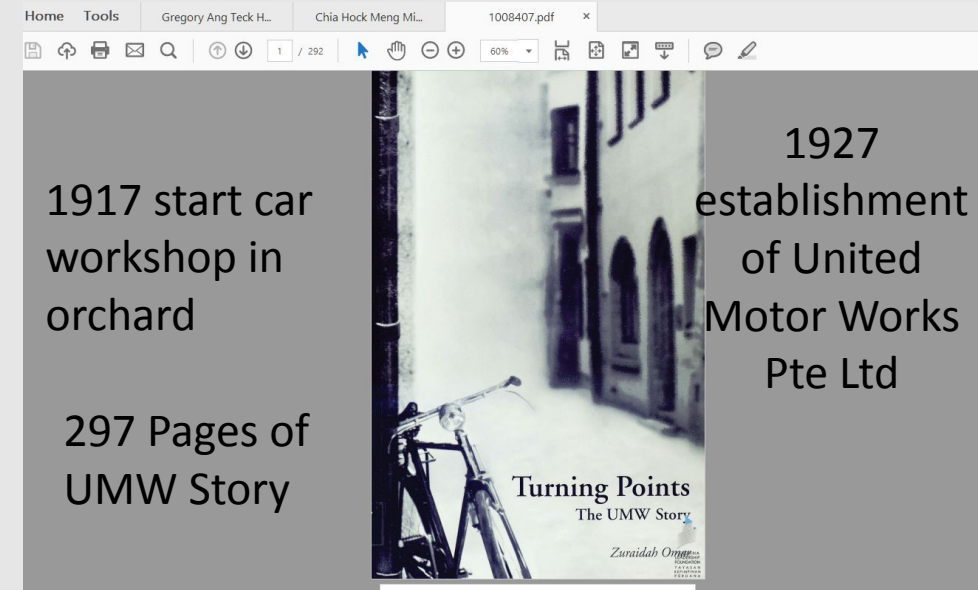
## United Motor Works Pte Ltd

United Motor Works Pte Ltd is headquartered in Singapore. The Company's line of business includes providing business services such as bondspersons, drafting services, lecture bureaus, and notaries.

SECTOR Consumer Discretionary	INDUSTRY Distributors - Discretionary	SUB-INDUSTRY Other Wholesalers	FOUNDED --
ADDRESS 60 Kaki Bukit Place, # 10-01/0 Eunos Techpark Singapore, 415979 Singapore	PHONE --	WEBSITE --	NO. OF EMPLOYEES --

Chia Hock Meng Michael

## Founder of UMW Holding



Chia Yee Soh's

1902 Start with a bicycle shop

### Our History | UMW Holdings

[www.umw.com.my](http://www.umw.com.my) › [index.php](#) › [our-company](#) › [our-history](#) ▼

His business thrived to a point where it became necessary to consolidate it through the establishment of **United Motor Works Pte Ltd** in 1927, a predecessor ...

### United Motor Works (1927) Pte Ltd | Contact Us

<https://www.streetdirectory.com> › [businessfinder](#) › [email](#) ▼

For enquiries & feedback, kindly contact **United Motor Works (1927) Pte Ltd** at 6291 0811 or simply fill up this form.

### United Motor Works (1927) Pte Ltd @ Eunos Techpark 2

<https://www.streetdirectory.com> › [businessfinder](#) › [company\\_detail](#)

**United Motor Works (1927) Pte Ltd** is located at Eunos Techpark 2, 60 Kaki Bukit Place, Tel 6291 0811, view **United Motor Works (1927) Pte Ltd** location, ...



## People Profile

### Current & Past Position(s) Held

Position	Date of Appointment	Date of Cessation	ShareHolding
SHAREHOLDER	13/01/2016		10000

NRIC/FIN/Passport No. : S1450024C  
Name : GREGORY ANG TECK HUAT  
Nationality : SINGAPORE CITIZEN  
Address : 50 MONK'S HILL ROAD  
#03-52  
MONKS HILL FLAT  
SINGAPORE (228576)

UEN : 199401371W  
Company Name : BARCELONA MOTORS PTE LTD  
Registration Date : 26/02/1994  
Company Type : PRIVATE COMPANY LIMITED BY SHARES  
Company Status : Struck Off

**16 Company In  
Singapore**

### Officer / Shareholder / Member of the following Companies

UEN : 198800515G  
Company Name : SHOWTIME PRODUCTIONS PTE LTD  
Registration Date : 16/02/1988  
Company Type : PRIVATE COMPANY LIMITED BY SHARES  
Company Status : Live Company  
Status Date : 16/02/1988  
Company Address : 156 MACPHERSON ROAD  
#09-01  
PSL INDUSTRIAL BUILDING  
SINGAPORE (348528)

Activity (I) : EXHIBITION ORGANISERS (82301)  
Description : THEATRICAL PRODUCERS & ENTERTAINMENT SERVICES NEC  
Activity (II) : RENTING AND LEASING OF OTHER PERSONAL AND HOUSEHOLD GOODS N.E.C. (EG BOOKS, MUSIC INSTRUMENTS) (77299)  
Description :



## Gregory Ang Co-Founder

As the founder of GangTV, Greg has been instrumental in planning the business operations, marketing initiatives, delivery, and distribution of channels across the region. His natural trailblazing style saw him launching Asia's first suite of HD channels in 2006 via Voom HD.

Since then, he has been integral in bringing Discovery Channel, ESPN, Hallmark Channel, The Food Network HD, Sundance Channel, WE tv, KMTV, AMC Networks International, Fashion One TV, Fashion 4K, and Videofashion News 4K to millions of living rooms in Asia Pacific.





# EXXA Token Digital Assets Wallet

The Most Powerful wealth-Building Secret in  
New Era of Digital Asset

# The EXXA Platform

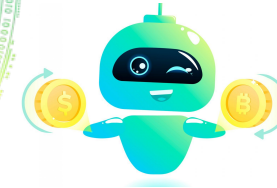
Travel Network



Mobile Wallet



Crypto Exchange



AI Trading Bot



Digital Lifestyle



Digital Academy



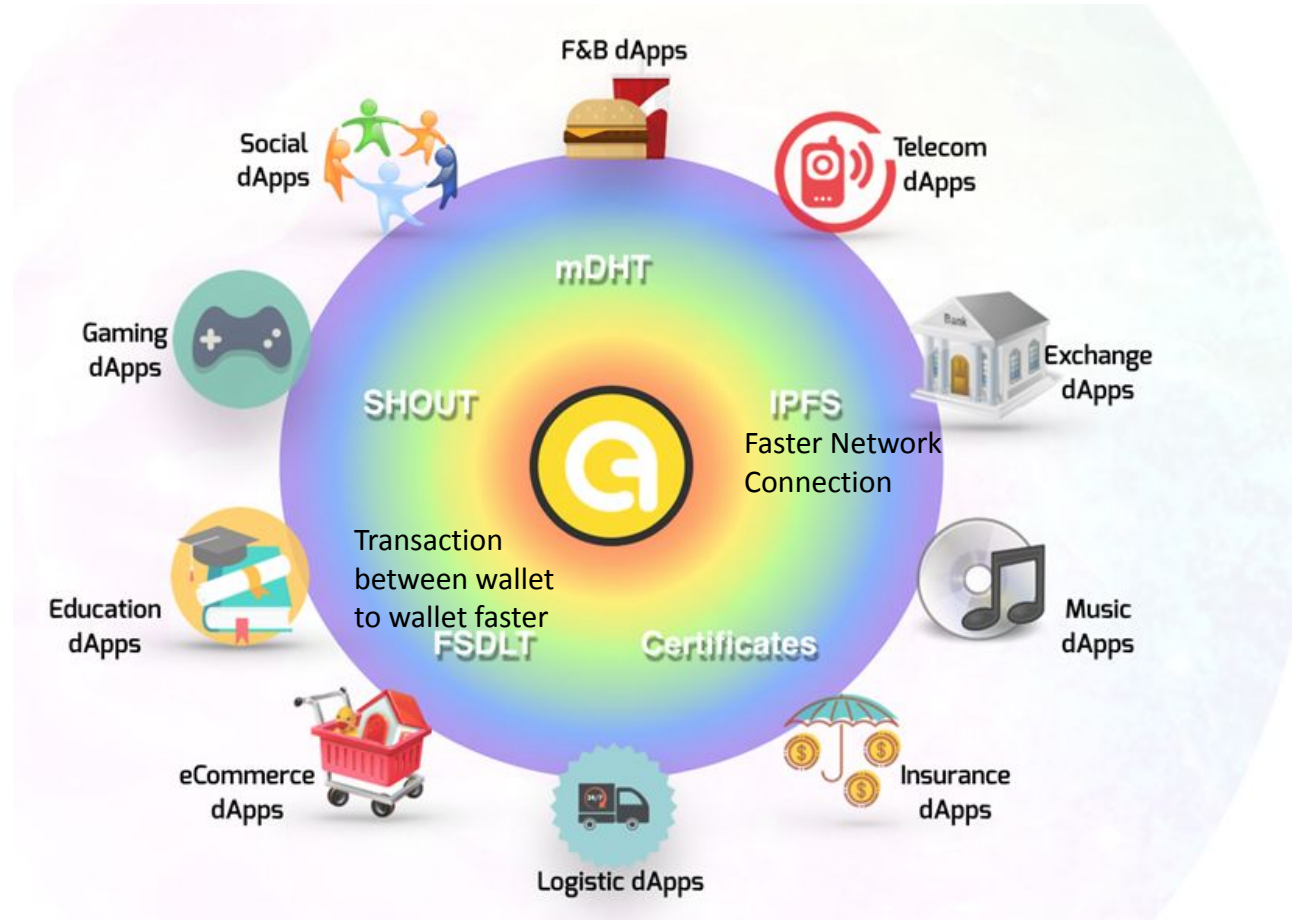


# The EXXA Platform

**BUILD**  
fully decentralize apps

**TRANSACTION**  
At high speed

**ACCESSIBLE**  
Android, iOS, Windows  
Embedded



**CREATE**  
your own tokens and assets

**SAFEGUARD**  
Trusted certificates

**Distributed**  
Fully distributed  
Trustless ledger



## One-Stop Blockchain Wealth Management Platform



**EXXA  
ACADEMY**



**EXXA  
TRAVEL**



# AI – Intelligent Airdrop Earning

## How to earn Airdrop?

Step 1: Download and register EXXA Wallet to become the user, and then store your digital assets into the platform, the platform currently supports BTC, ETH, LTC, USDT, EXXA (Token)

Step 2: Transfer the digital asset in your wallet to “EXXA Wallet” with capital of \$10 - \$299, activate \$300 “Airdrop” (Master Staking) to become the Ranking of “Fans”, starts to earn 0.2% – 0.6% daily airdrop earning as passive income, 3% - 9% monthly passive income.







# How to earn Group Reward?

Requirement	Group Reward			
	Level 1	Level 2	Level 3 - 15	Level 16 - 21
Sponsor 1 pax	Daily Personal Airdrop Earning x 100%			
Sponsor 2 pax	Daily Personal Airdrop Earning x 100%	Daily Personal Airdrop Earning x 50%		
Sponsor 3-15 pax	Daily Personal Airdrop Earning x 100%	Daily Personal Airdrop Earning x 50%	Daily Personal Airdrop Earning x 5%	
Sponsor 16 pax	Daily Personal Airdrop Earning x 100%	Daily Personal Airdrop Earning x 50%	Daily Personal Airdrop Earning x 5%	Daily Personal Airdrop Earning x 5%

# Community Reward

Ranking	Requirements	Rewards	Estimated Income
X1	200K	5%	20K – 60K
X2	3 X1	10%	60K – 160K
X3	3 X2	15%	160K – 500K
X4	3 X3	20%	500K – 1 Million
X5	3 X4	25%	3 Million – 5 Million