

LCD Video Wall User Instruction

Part 1 : Function Indicators

Input	1ch CVBS	BNC Interface ,Support PAL/NTSC ,1ch loop out
	1 ch VGA	Support VGA signal ,1920X1080 60Hz
	1ch DVI	Support DVI signal ,1920X1080 60Hz
	1 ch HDMI	Support HDMI Signal ,1080P 60Hz
Output	Backlight	2ch 13pin backlight DC power and backlight control signal output .
	LVDS	Support Single or double LVDS, Support WUXGA (1920X1080) screen at most .
Engineering System Software	Video Wall control software V14.4.4.0, RS232 interface control (1ch in and 1ch loop out)	
Work Temperature	0~70℃	
Work Humidity	5~95%RH	
Power AC Voltage	100-240V/50,60Hz	
Power Consumption	300W most,different according to different screen model.	
Size	280×269×54.1 (mm)	



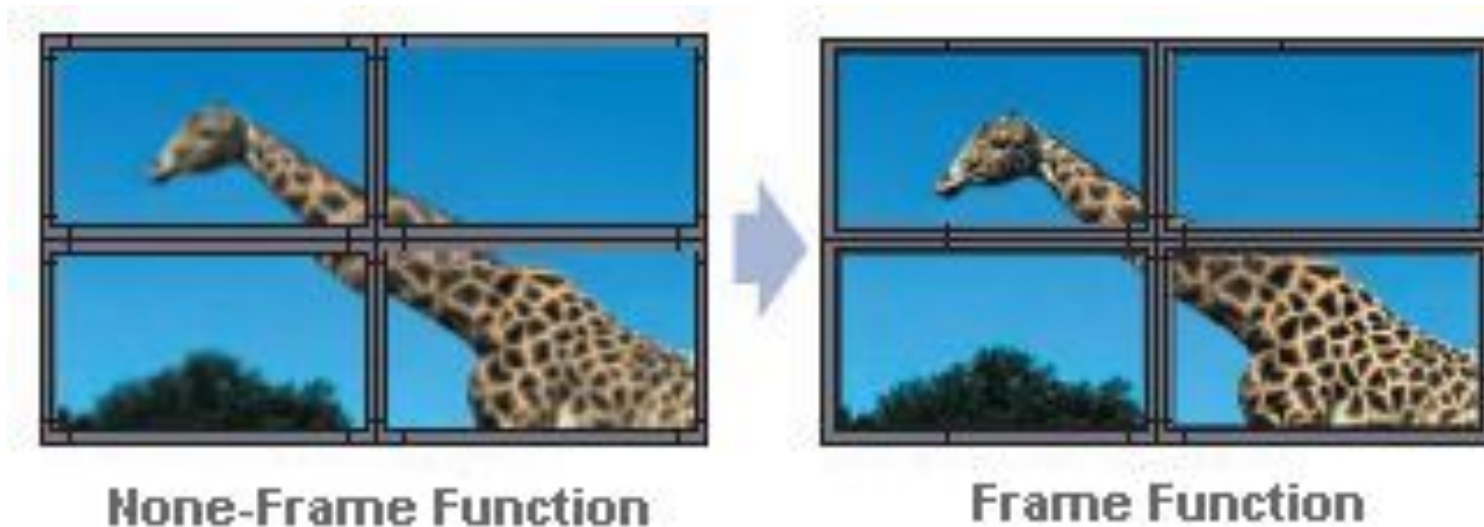
Function :

- Full hardware architecture, Without CPU and Operation system;
- Start-upTime less than 6ms;
- No risk of virus infection,good safety;
- Integrated multi-channel video signal source types : Composite video, VGA, DVI, HDMI;
- Composite video can loop out ;
- With USB updating interface, quick and simple update;
- Embedded 3D Video Light separation circuit unit
- Embedded 3D progressive normalization process and frame rate conversion circuit unit;
- Embedded 3D digital signal noise reduction unit;
- supports drive to 1920X1080 LCD screen;
- RS232 Serial Remote Control; each unit support 1ch in and 1ch out ;
- Can continue to work 24 hours a day;
- Easy operation with controller software

Features:

- **Support Frame compensation function**

Embedded Frame compensation function, can adjust all the picture to a window to display.



- **Thermostatically controlled fan**

Embedded Thermostatically controlled fan,can adjust the fan's operation according to the actual temperature to make sure the long life of usage .

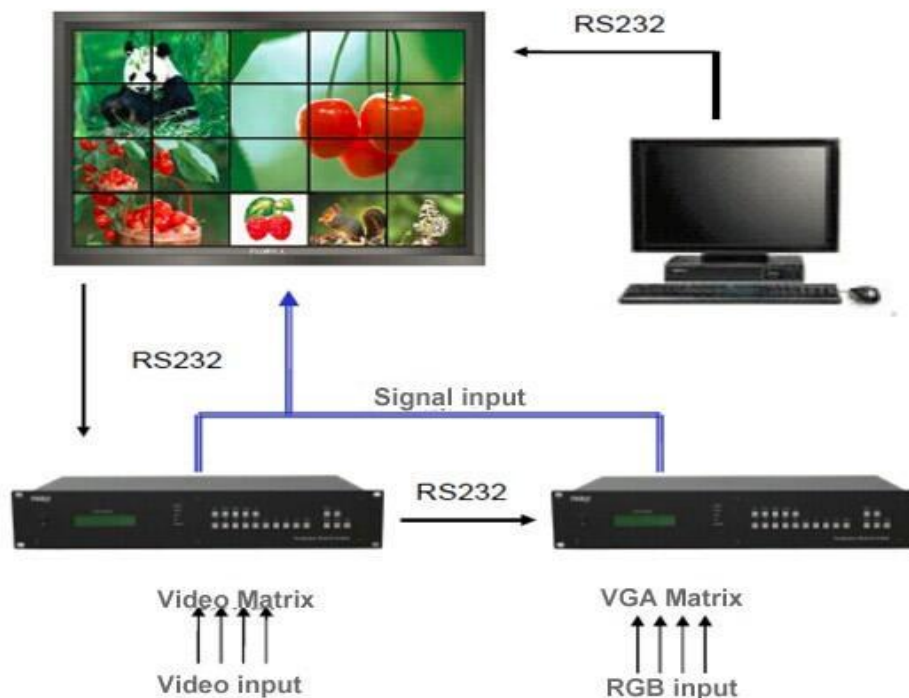
- **Word-Editing Function**

This special word-editing function,have single screen,splicing screen display,the Word size, Color,Play speed、 Play/Stop and etc.function can be changed according to your application.

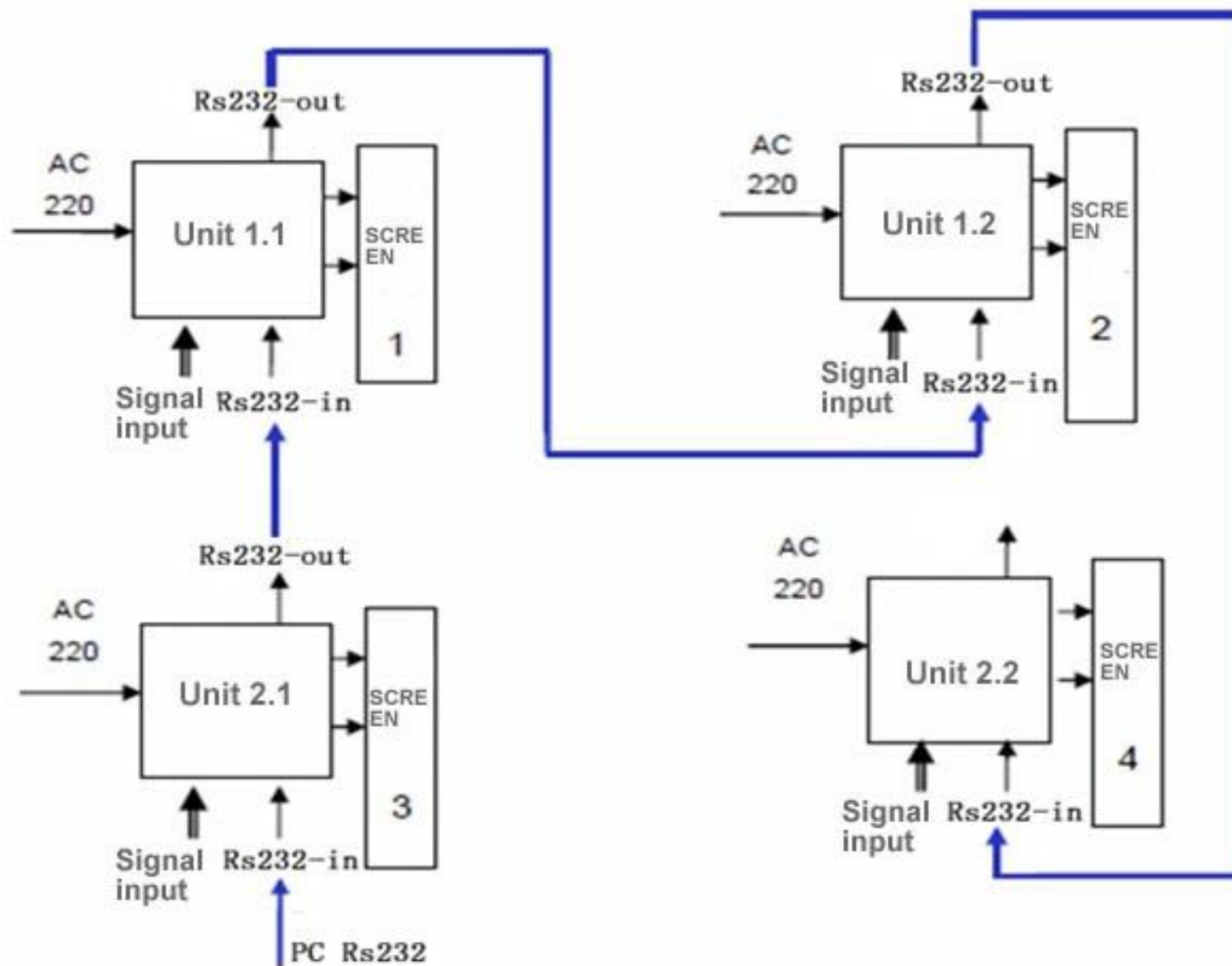
- **Software updated automatically via USB**

With a USB Interface,You can update the software via USB.Only save the updated software to the USB and insert to the USB interface,After Re-AC,the controller will check the software and updated automatically.

System structure:



System Connection(2X2):



Part 2 : Intergrated Controller Interface



No.	Definition
1	Power Led , Orange -standby , Green-working
2	HDMI signal input
3	DVI Signal input
4	VGA signal input
5	CVBS/ Composite Video Input (BNC)
6	CVBS/Composite Video signal loop out (BNC)

7	RS232 Control signal input (RJ45)
8	ISP Upstae ,Infrared Access Conversion (RJ45)
9	RS232 Control signal output (RJ45)
10	RS232 Control signal output (RJ45)
11	USB update interface
12	AC power input , Built-in 3A fuse。
13	Power switch.

Part 3:Control Software Instruction

Software Operating Environment

Operation system: Windows 98/2000/ NT/XP/WIN7/ WIN8/WIN8.1/WIN10/Vista,

Minimum CPU :Pentium 133Mhz

RAM: 128MB

Graphics Card :Standard VGA, More than 256 color display mode

Hard disk: 10M typical installation

Serial communication port: Standard RS232 communication interface or compatible models.

Other equipment: mouse

The steps of running the software :

1,Open the the power switch , the power LED is on :

Green color : system is on ; Orange : system is standby

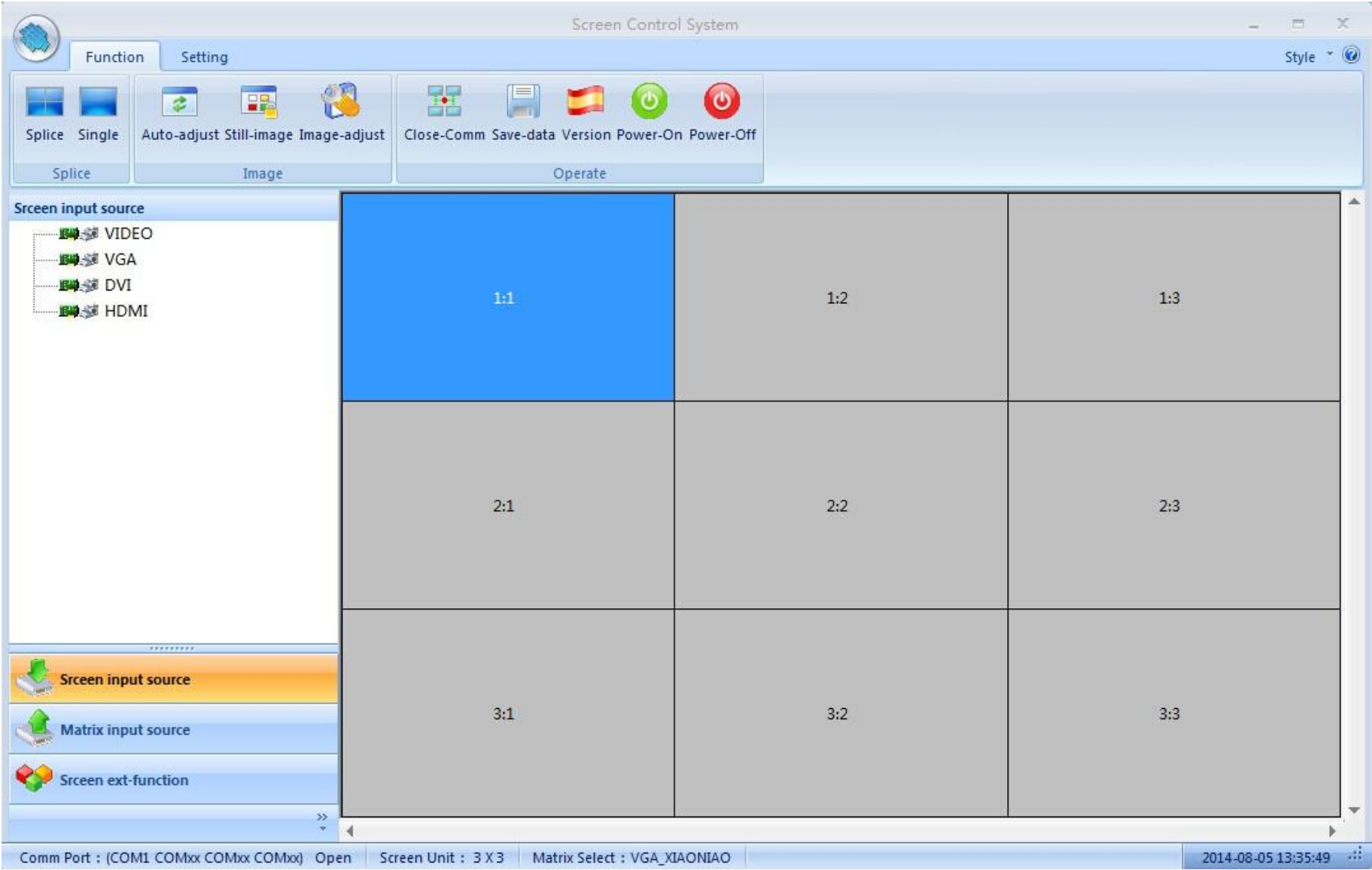
2,Find the software , click LCD_CONTROL.exe , Software login window appears:



Input the user password and click login , the default password is : 2076



3,Software Interface



HDMI cable connection for matrix device

all the monitor's HDMI port should connected with the HDMI output port on the matrix device, and there is a order

1:1 connect to HDMI output 1

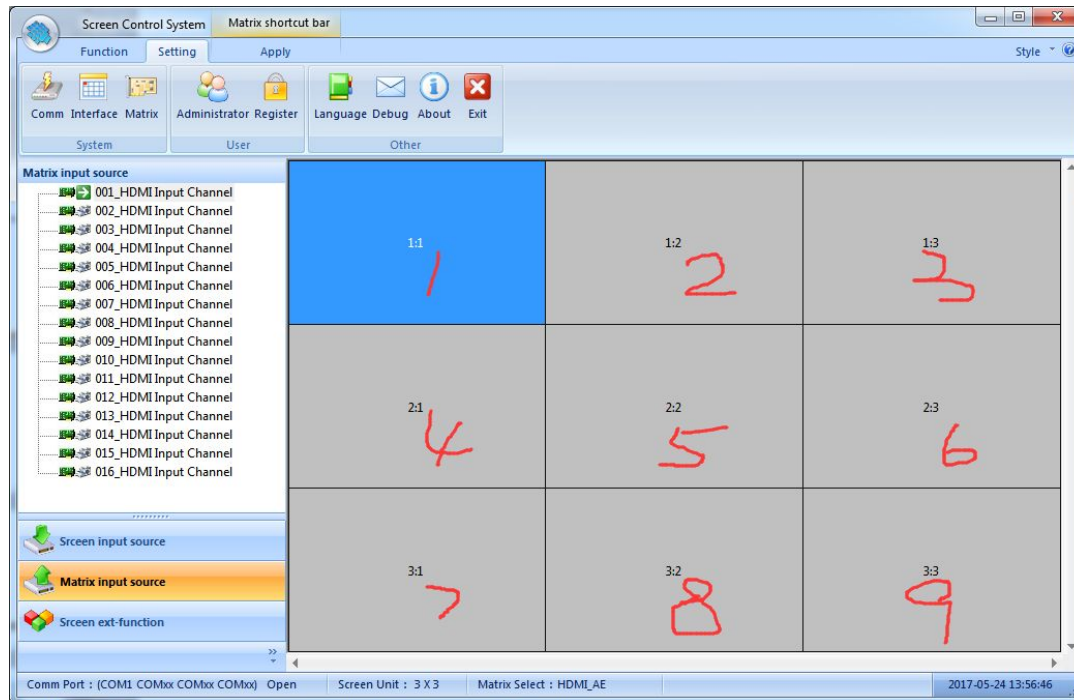
1:2 connect to HDMI output 2

1:3 connect to HDMI output 3

2:1 connect to HDMI output 4

2:2 connect to HDMI output 5

.....



COM port Settings

Click " Setting " - "Comm "

The image shows a 'Comm Config (COM3)' dialog box with four sections for different COM setups. Each section has checkboxes for 'On/Off' and 'Auto Open', and dropdown menus for 'Port' and 'Baudrate'. The 'Lcd Com Setup' section has 'On/Off' and 'Auto Open' checked, with 'Port' set to 'COM1' and 'Baudrate' set to '9600'. The 'AV Matrix Com Setup', 'VGA Matrix Com Setup', and 'HDMI Matrix Com Setup' sections have 'On/Off' and 'Auto Open' unchecked, with 'Port' set to 'COM1' and 'Baudrate' set to '9600'. At the bottom, there are 'Check Port' and 'Enter' buttons, and an 'Open LAN server' checkbox with the IP address '192.168.1.105'.

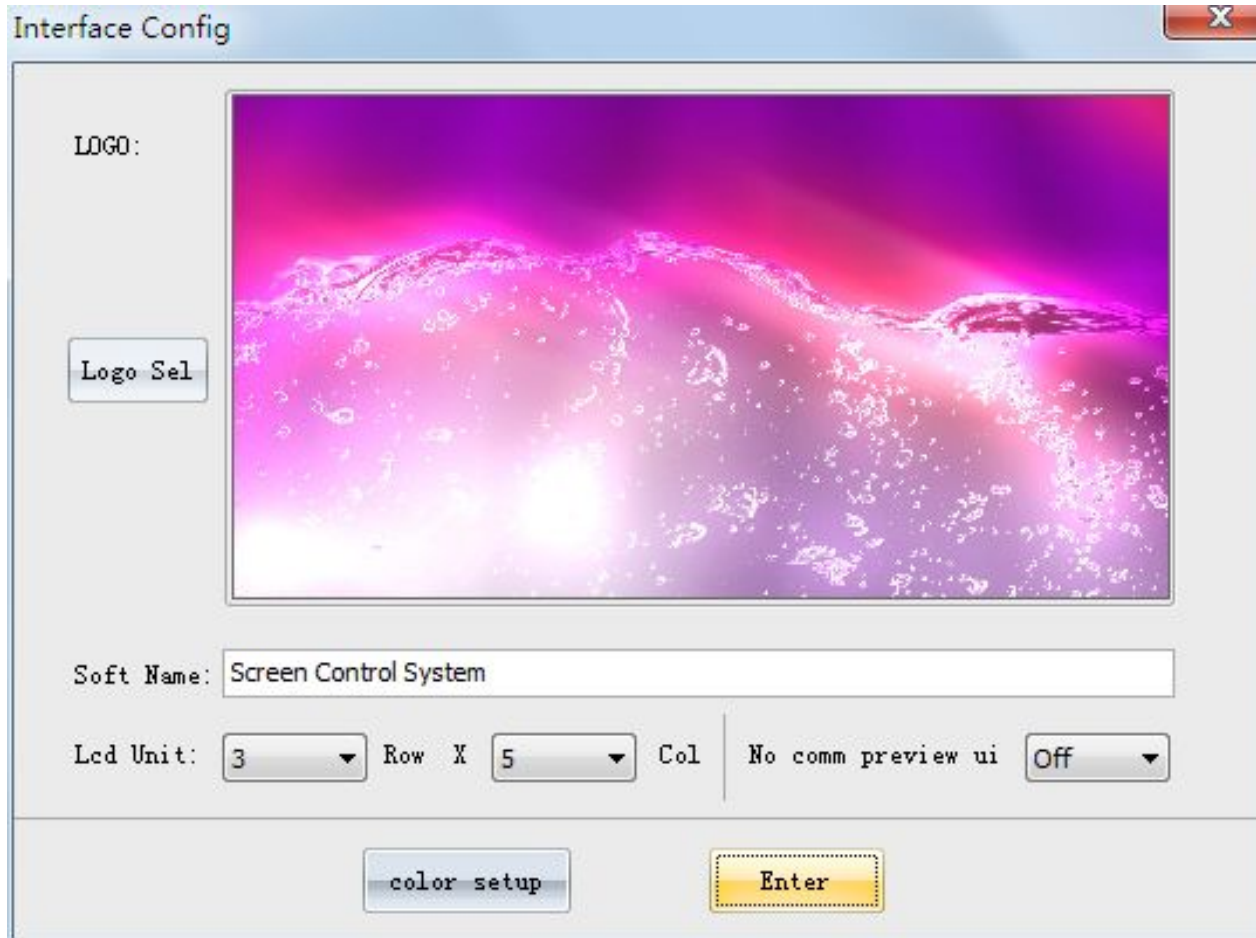
Section	On/Off	Auto Open	Port	Baudrate
Lcd Com Setup	<input checked="" type="checkbox"/>	<input checked="" type="checkbox"/>	COM1	9600
AV Matrix Com Setup	<input type="checkbox"/>	<input type="checkbox"/>	COM1	9600
VGA Matrix Com Setup	<input type="checkbox"/>	<input type="checkbox"/>	COM1	9600
HDMI Matrix Com Setup	<input type="checkbox"/>	<input type="checkbox"/>	COM1	9600

Buttons: Check Port, Enter, Open LAN server (192.168.1.105)

- 1) Choose the correct COM port ,System to work properly
- 2) Can set Com port auto connection when running the software

Interface Config

Click " setting " -- "Interface "



Interface Config

LOGO:

Logo Sel

Soft Name: Screen Control System

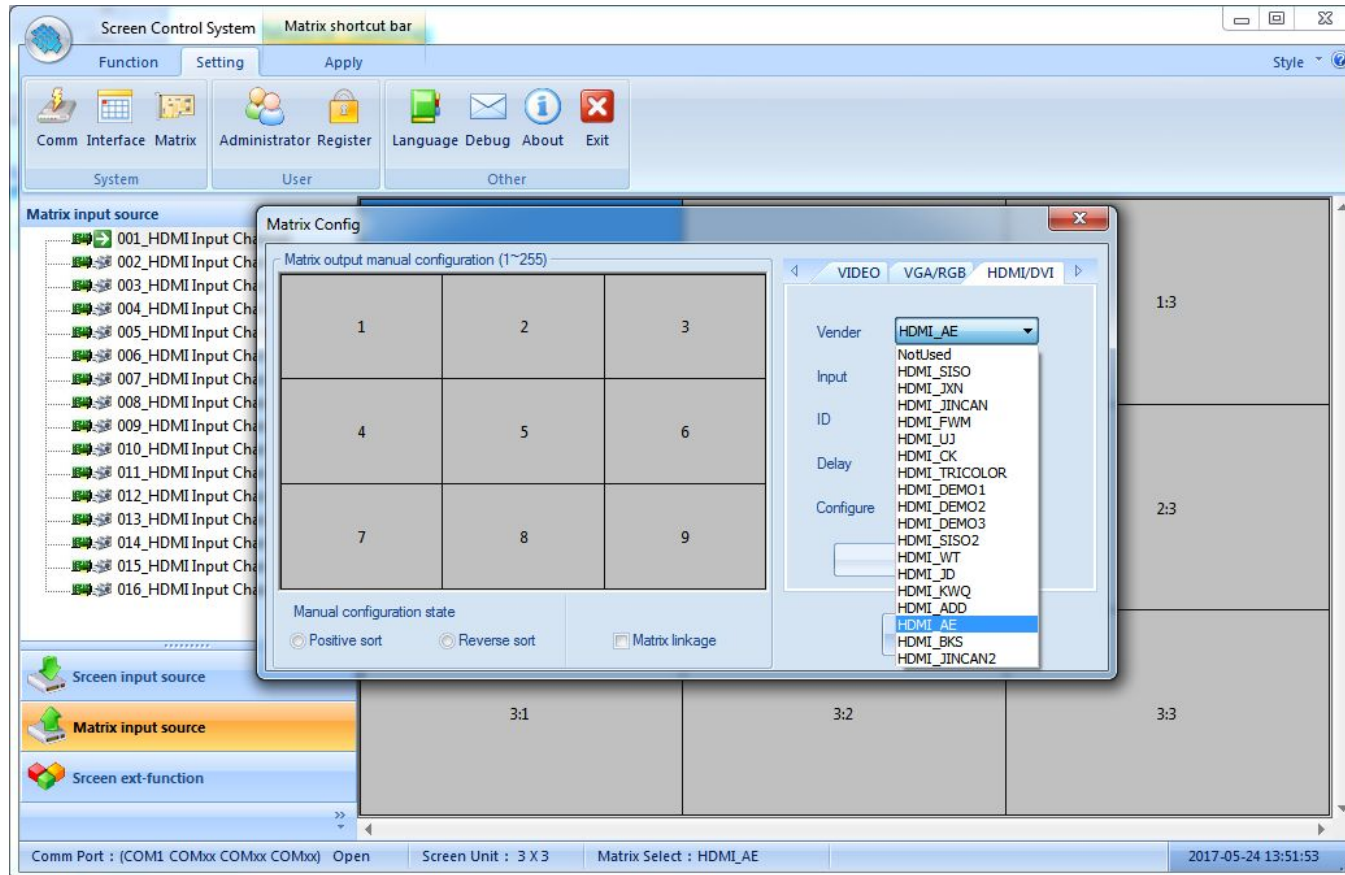
Lcd Unit: 3 Row X 5 Col No comm preview ui Off

color setup Enter

- 1) User name: Set the title of operator interface name, you can change according to demand freedom
- 2) LCD unit: Select your screen splicing unit corresponding number, like 2x2, 2x3, 3x3 and etc.
- 3) Logo : Set the Log in picture ,you can change freedom
- 4) after setting, click "Enter"

Matrix Setting

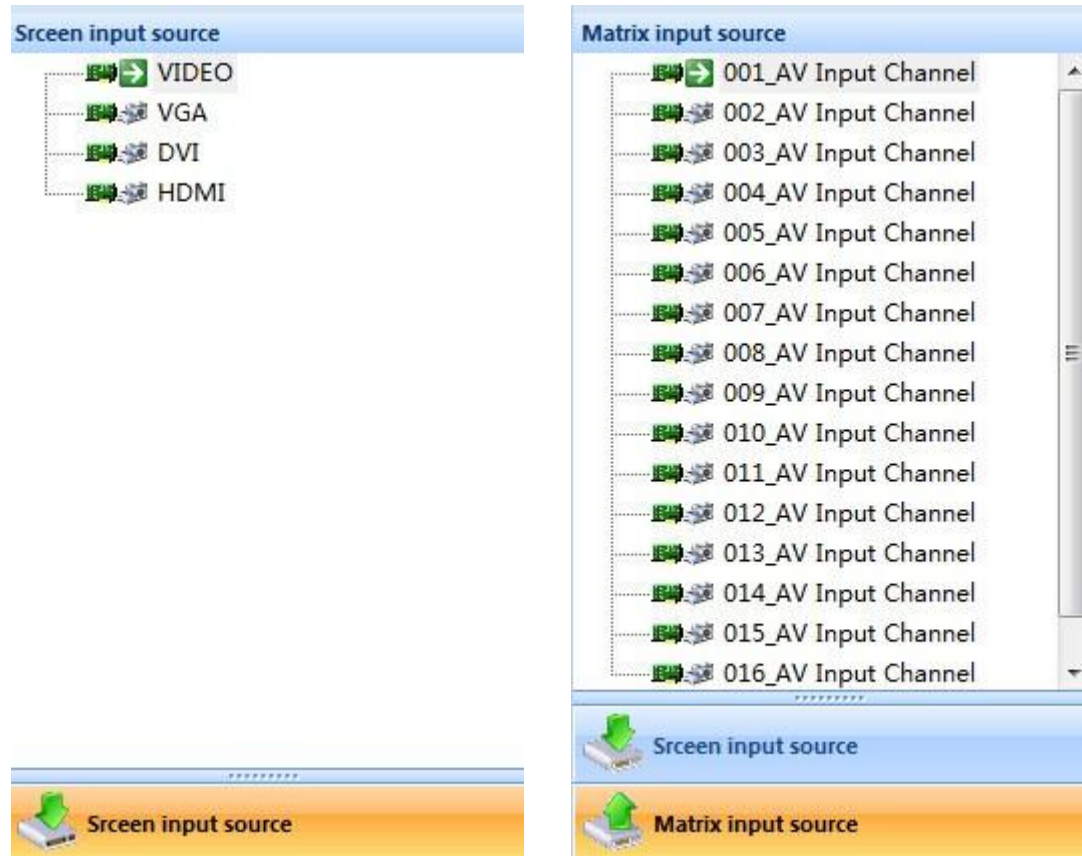
Click " Setting" --" Matrix "



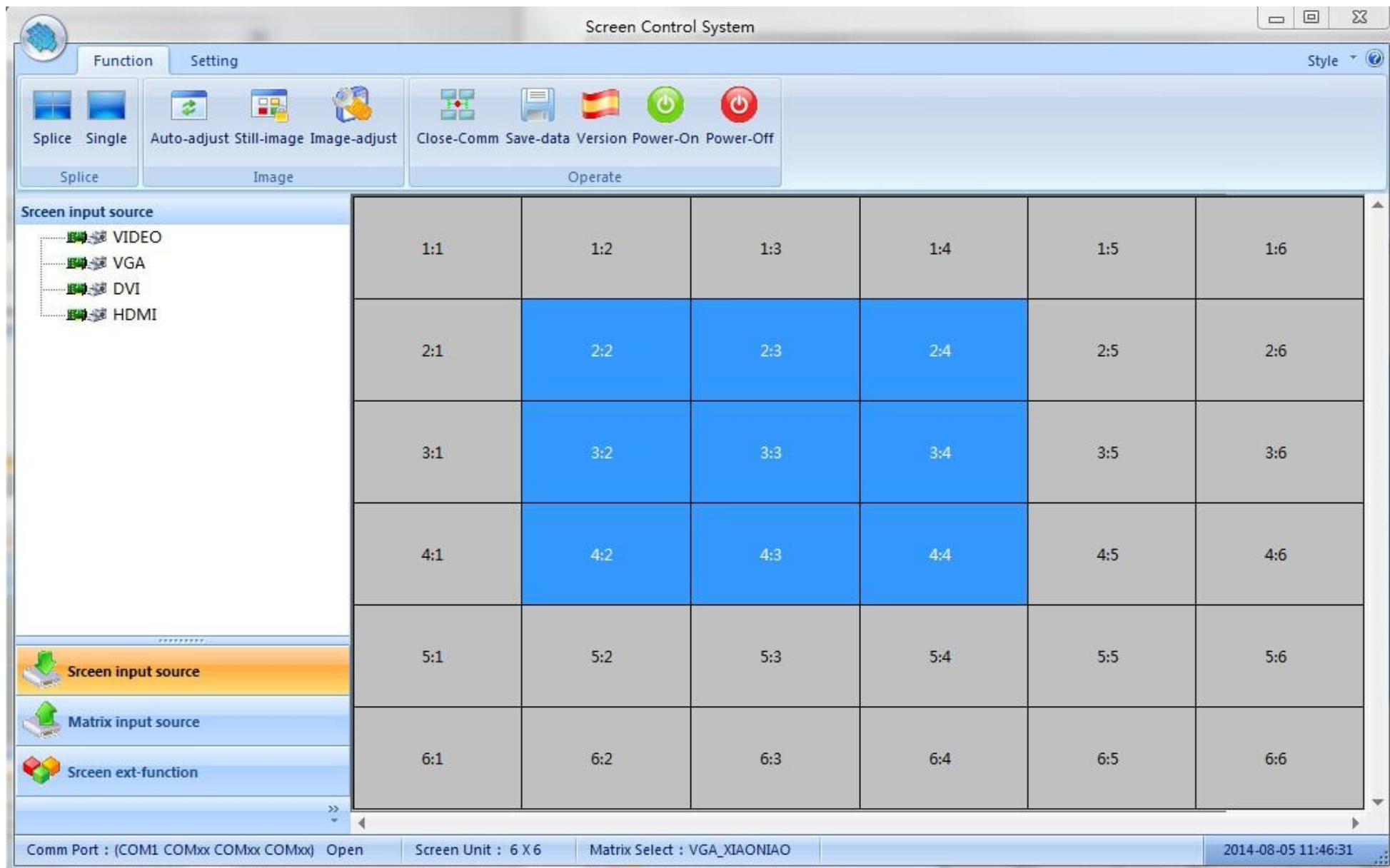
- 1) According to the Original Matrix setting : AV Matrix , VGA Matrix、DVI\HDMI Matrix
- 2) The matrix have to be compatible with our software protocol
- 3) Input channels, device address, command delay ,different set with different matrix command.
- 4) the matrix and monitor configuring relations can be changed when Configuring relations is manual
- 5) Linkage control、Rename matrix can be set freedom

Splicing Operation

- 1、Make sure COM port already open, can check Status bar or shortcut function area " open/close COM"
- 2、Make sure the signal type according to the inputted equipment signal origin



- 3、If have matrix , then you need to click the Matrix Linkage with √
- 4、Choose Splicing screen, take the following 6x6 video wall for example ,need to splice (2,2)-(4,4) area to a 3x3 big screen displayed .



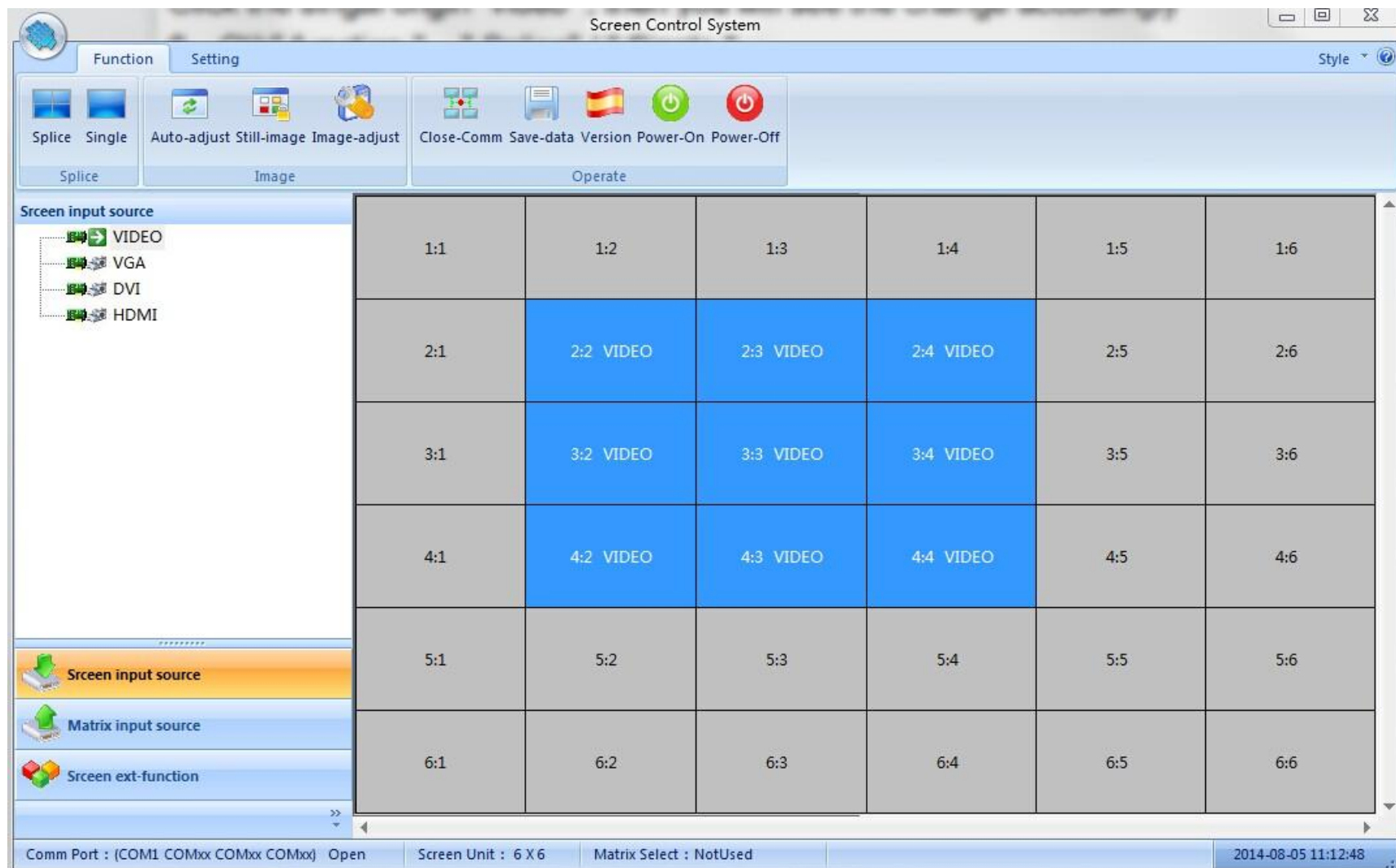
返回目
录

5、 Select the correct signal input type and Matrix input channel , like: VIDEO,001_AV matrix input channel

Click the singal origin "video ", then you will see the change accordingly

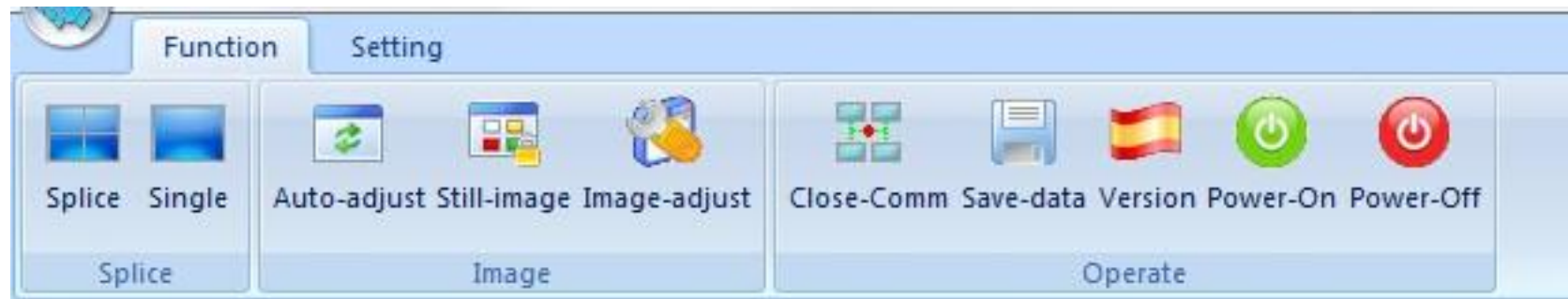
6、 Klik" function " - " Splice" / " Single "

7、 The system will be saved automatically for all your operation

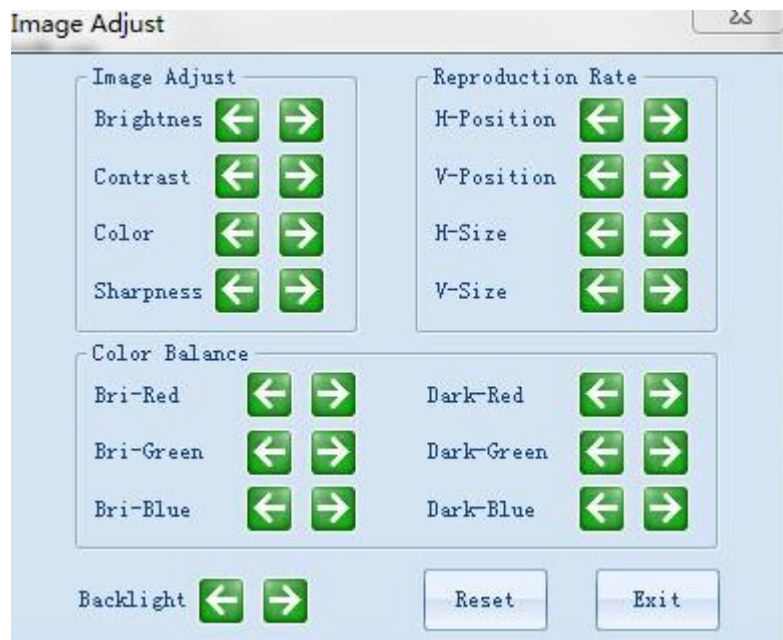


Other Function

- “ Function ”



- 1、Splice ,Single : Quick set the video wall status
- 2、Auto-adjust : On VGA Signal , Auto adjust the image position,remove black-edged
- 3、Still-image : Can make the moving image static
- 4、Image-adjust: Only valid on the "Administrator " mode



(1),Subtitle Function (Word-editing)

① Select one line to be showed the words , take the first line for example (3x3)

1:1 VIDEO	1:2 VIDEO	1:3 VIDEO
2:1 VIDEO	2:2 VIDEO	2:3 VIDEO
3:1 VIDEO	3:2 VIDEO	3:3 VIDEO

②Click "subtitle" ,if shows failed, then check the cable damaged or not ,if successful , then go to next step

③Set word : size ,speed, color, position and etc.

④Click 'open", there will be belt light words appears

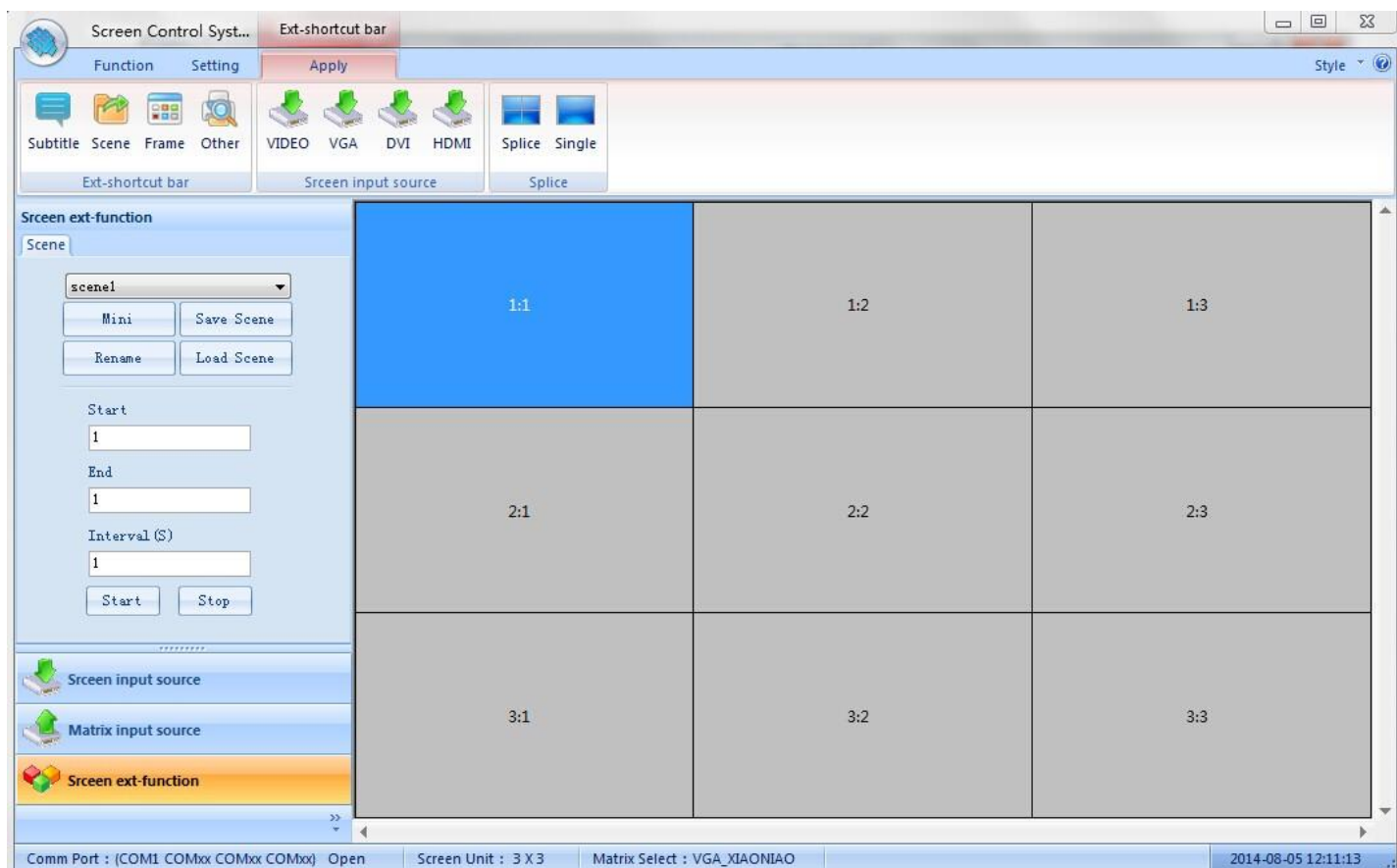
⑤Can set single screen to show the words, but the whole video wall only show one word



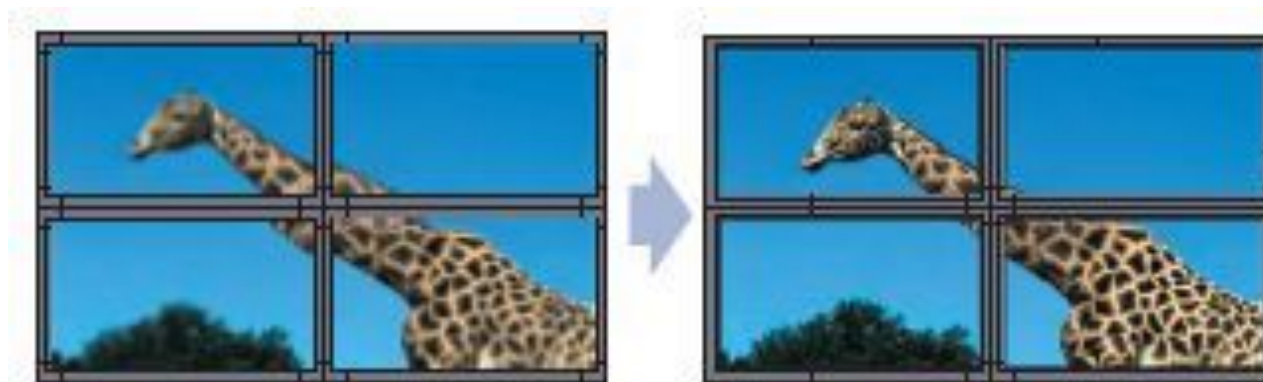
- ⑥、Close-Comm: On the case of the correct set of Com port ,can click this to open/close Com port quickly
- ⑦、Save Data: if the system cannot auto-save data, use this function to save
- ⑧、Version: show the version information on the bottom of the software
- ⑨、Power-on/Power-off: control the video wall standby or open/off situation

Screen Ext- Function

Click " Screen Ext-Function"



(2)Frame function



None-Frame Function

Frame Function

(3)Soft DIP Setting (Dial)



First ,the software interface H/V is the same with the actual video wall H/V (for example ,3x3) , then select the screen to be dialed, Click "Read Code" or " Create Code", A new ID-Code will be showed on the video wall, just input this ID-code on the software "ID-Code " area , Then Click " Apply " to finish this selected screen DIP setting .The same way to set other screens' address ID.

Note: if you find the same ID code , pls re-creat code to choose the different one instead . Continus input ID Code way : select the first screen-> input the first id code -> "Enter" --> input the second screen's id code--> "Enter" --> Input the third screen's id code --> " Enter".....



Part 4, Troubleshooting

When the product is faulty, please turn off the power immediately, Please do not attempt to disassemble the unit for repair ,this may cause further damage to the product .According to the following steps to exclude .if still problem, pls contact us .It is not in our warranty area if the product is repaired by users personally

Situation	Method
Cannot open the machine (Power indicator off)	1、 Check the power cord for damage 2、 whether access to electricity supply 3、 Make sure the power is on 4、 the power switch is not damaged 5、 Whether the fuse is blown
Cannot control all the screen unit	1、 Check the software COM port setting is right 2、 Check Serial cable is damaged or not , good contact between product and PC interface 3、 Check the PC interface, or change another PC to test 4、 DIP Switching is correct ?
cannot control some of the screen unit	1、 Check the DIP setting is correct ? 2、 Is it ok to control the single screen ?
Single or multi signal not input	1、Check screen board and signal origin interface to be connected well ? 2、Change a VGA cable or DVI cable for testing 3、Check the Input status ,you choose the correct signal input ? 4、Input Signal exceed the input area of this equipment ?



Part 5: Performance

Work Temperature : -15°C-65°C

Work Humidity : Relative humidity less than 95%

Power consumption : ≤300W, Depends on the screen model and size

Supply Voltage : 95V AC-250V AC

Composite video format : PAL、NTSC、SECAM

Composite Video Peak : 1Vp-p

Control way : RS-232 (RJ45)

VGA input : WUXGA (1920*1080)

DVI input : WUXGA (1920*1080)

Screen resolution support : WUXGA (1920*1080), Dual: 10bit

Thermostatically controlled fan : Automatic control

Part 6: Safety Precautions

- 1, Please read this manual carefully
- 2, Keep this manual for future use
- 3, Make sure the supply voltage is 220V before using
- 4, Don't cover or step on the power cord
- 5, Pls power off before make some changes for this controller
- 6, Pls ask the maintainer to check for the following situation:
 - a, power line or switch is broken
 - b, the system cannot work properly
 - c, the equipment is broken。
 - d, the equipment has obvious cracks

