

Training Manual

For LED TV UK5170
Series




UE32K5170SSXZ
G

Contents

- I . Specification
- II . Design
- III . Inner Feature
- IV . Disassembly
- V . Troubleshooting

I . Specification – For 32K5170



	Inch		UK5170											
Front View	All													
Detail View	All													
	All													
Front Color	All		Black (panel)											
Dimensions W x H x D	32K5100	Without Stand	28.4	x	18.3	x	3.1	(inches)/	721.4	x	464.6	x	78.0	(mm)
		With Stand	28.4	x	20.4	x	7.2	(inches)/	721.4	x	519.1	x	183.0	(mm)
Weight (lbs)	32K5100	Without Stand	11.5 (lbs) / 5.20 (kg)											
		With Stand	11.7 (lbs) / 5.30 (kg)											
Panel Type	All		Slim LED											

I . Specification – For 32K5170

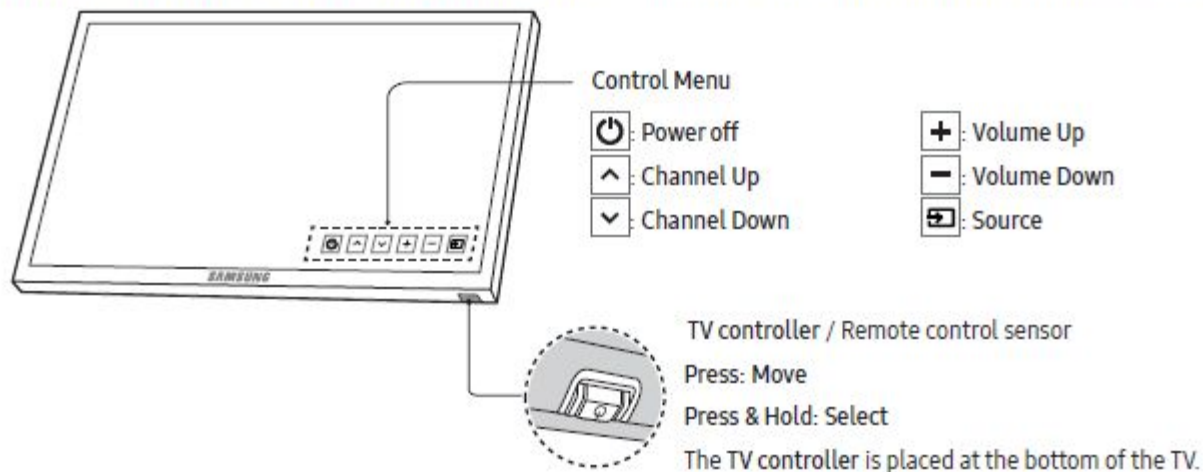


Model	UK5170 32inch
Feature	
<ul style="list-style-type: none"> ▶ Digital-TV, RF, 2-HDMI, 1-USB , 1-Component, 1-AV, Digital Audio Out(Optical), CI Slot: (for EU&CIS) ▶ Brightness : 250 cd/m2 ▶ Dynamic Contrast Ratio : Mega Contrast ▶ Motion Rate : 50 ▶ PQI (Picture Quality Index) : 200 	
Specifications	
Item	Description
Screen Size (Diagonal)	32 inches (Real Inch: 31.5)
LCD Panel	FHD 60Hz
Display Colors	16.7M color
Display Resolution	1920x1080
Input Signal	Analog 0.7 Vp-p \pm 5% positive at 75 Ω \pm 5 %, internally terminated
Input Sync Signal	H/V Separate, TTL, P. or N.
Environmental Considerations	Operating Temperature: 50°F ~ 104°F (10°C ~ 40°C) Operating Humidity: 10% ~ 80%, non-condensing Storage Temperature: -4°F ~ 113°F (-20°C ~ 45°C) Storage Humidity: 5% ~ 95%, non-condensing
Sound (Output)	20W (10W X 2)

TV Controller

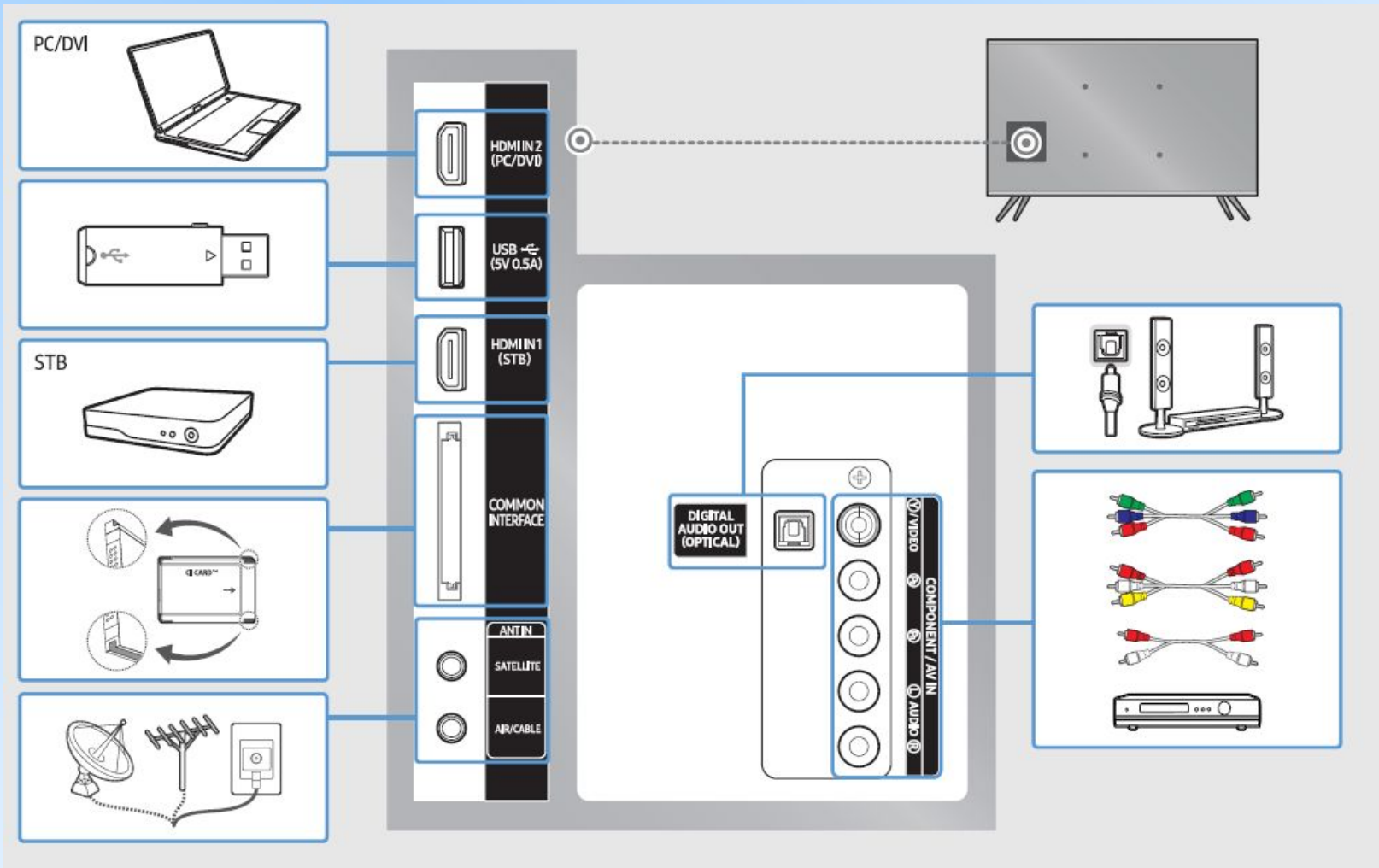
Using the TV Controller

You can turn on the TV with the TV controller button at the bottom of the TV, and then use the Control Menu. The Control Menu appears when the button is pressed while the TV is On. For more information about its usage, refer to the figure below.



II. Design

● Making Connections



○ Changing the Input Source

Changing the Input Source

Source

Use to select TV or other external input sources such as DVD / Blu-ray players / cable box / STB satellite receiver connected to the TV.

1. Press the SOURCE button on your remote.
2. Select a desired external input source.
 - TV / HDMI1 / HDMI2/DVI / AV / Component
 - In the Source, connected inputs will be highlighted.
 - PC(D-Sub) input is not supported. If you want to connect PC to the TV, you can connect the HDMI to DVI cable with the HDMI IN 2(DVI) port on the TV.

How to use Edit Name

In the Source, press the TOOLS button, and then you can set an external input sources name you want.

- When connecting a PC to the HDMI IN 2(DVI) port with HDMI cable, you should set the TV to PC mode under Edit Name.
- When connecting a PC to the HDMI IN 2(DVI) port with HDMI to DVI cable, you should set the TV to DVI PC mode under Edit Name.
- When connecting an AV devices to the HDMI IN 2(DVI) port with HDMI to DVI cable, you should set the TV to DVI Devices mode under Edit Name.

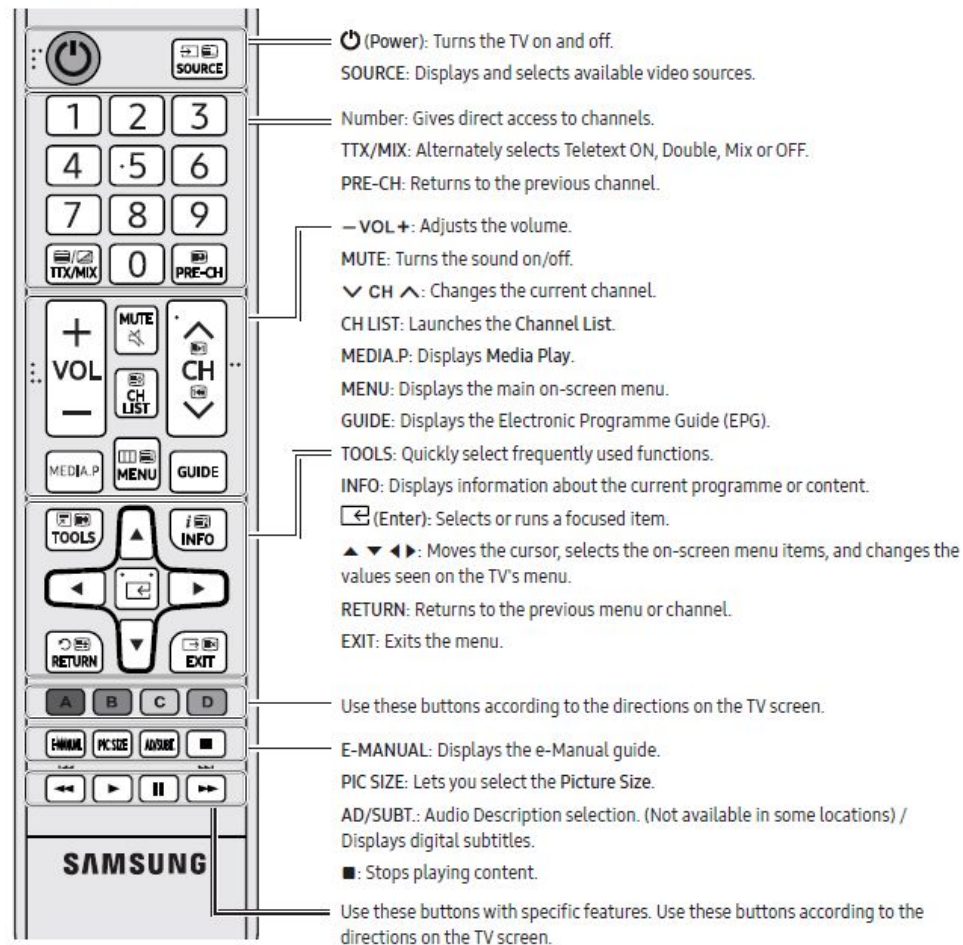
Information

You can see detailed information about the connected external device.

Remote Control

The Remote Control

- This remote control has Braille points on the Power, Channel, Volume and Enter buttons and can be used by visually impaired persons.



- The button names above may differ from the actual names.

II. Design



○ Viewing Front



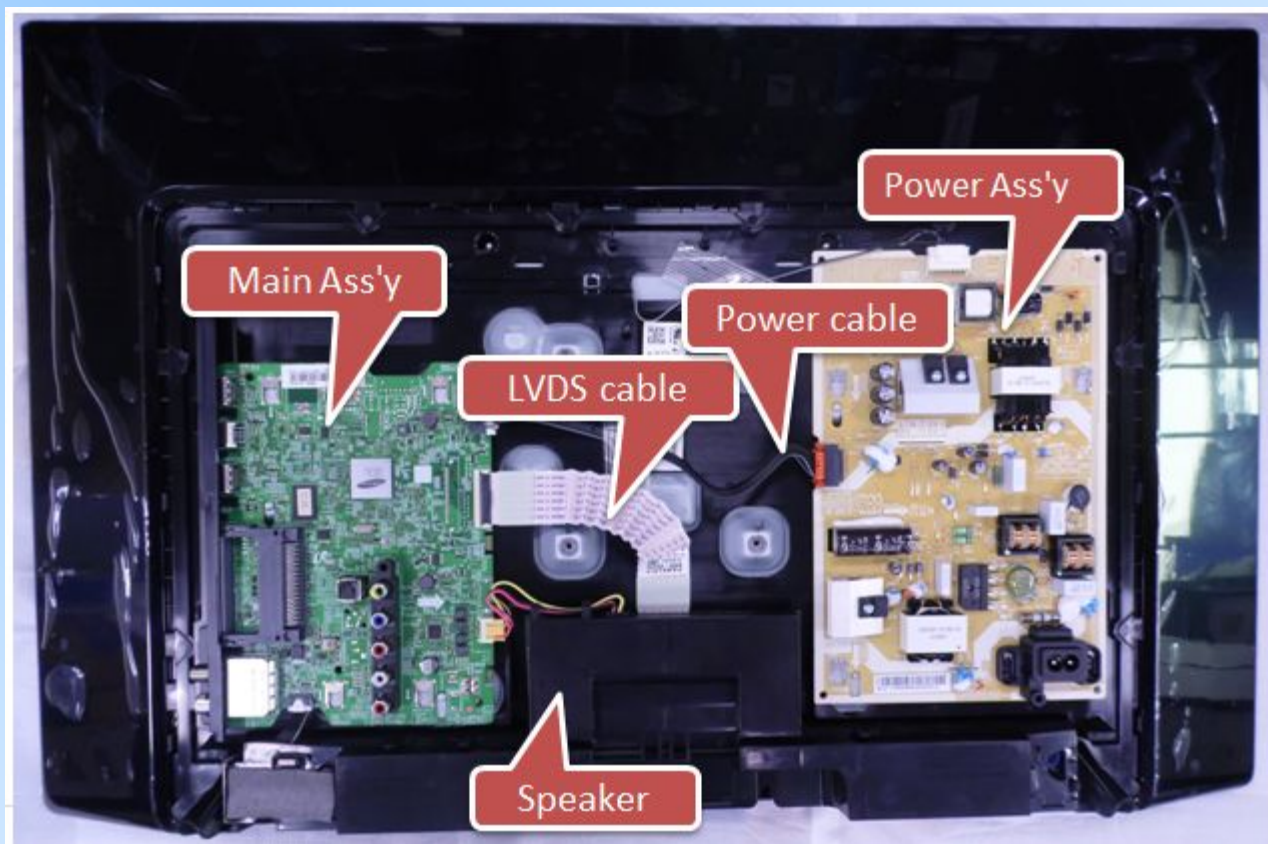
- Speakers

- Remote Control Sensor
- TV Controller

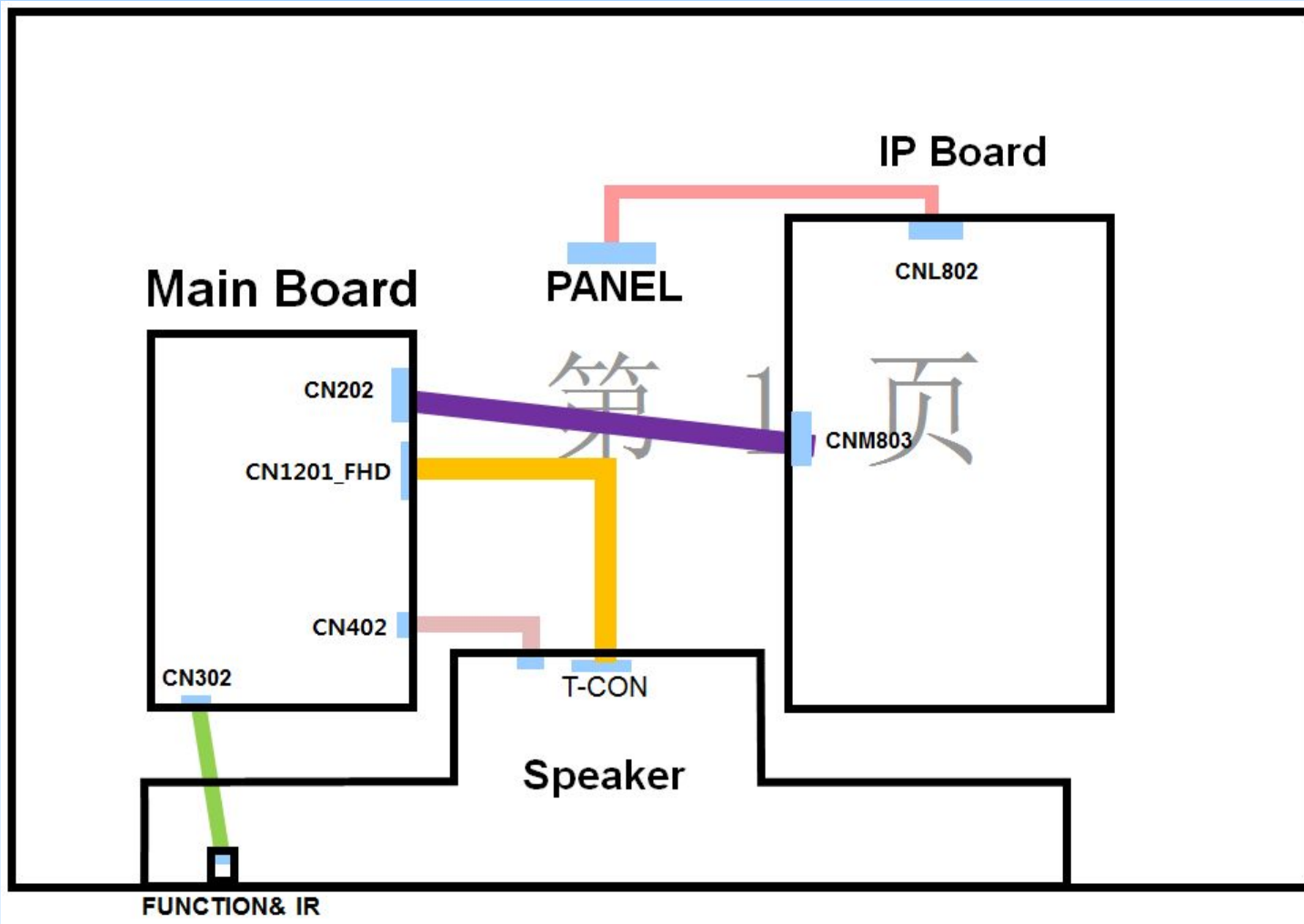
III. Inner Feature



LAY OUT







III. Inner Feature



IV. Disassembly

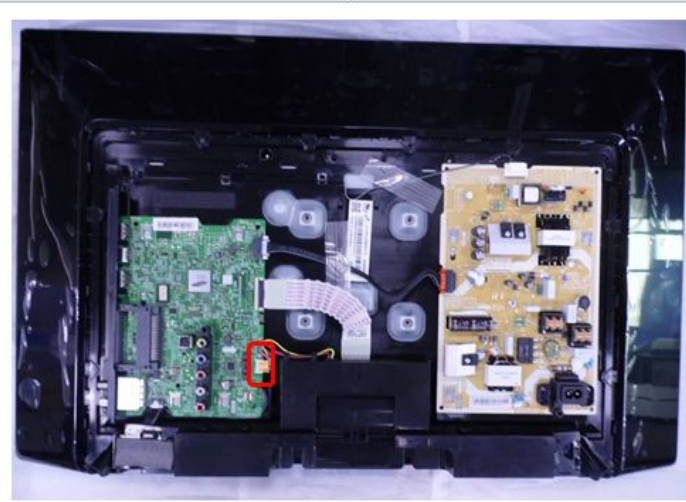


UE32K5170SS***		
Description		Picture Description
<p>1. Place TV facing down on the table with cushion.</p>		
<p>2. Remove the cover real. Remove the screw of rear-cover.</p> <p> 6003-001782</p> <p>Locking Part Top : Each 6 point L/R : Each 3 point Bottom : Each 4 point</p>		

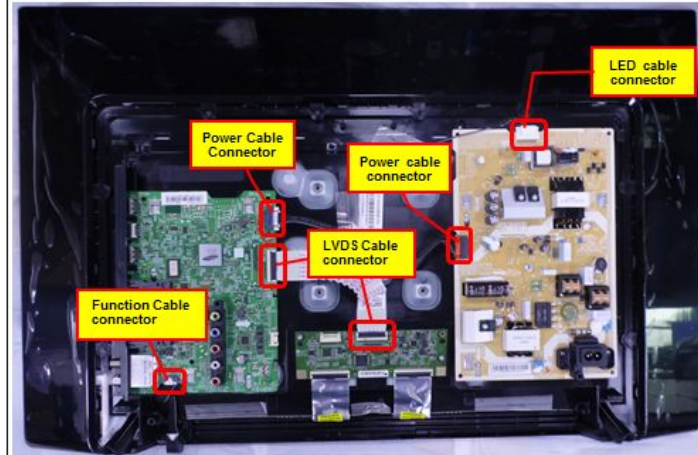
IV. Disassembly



3. Remove the speakers.

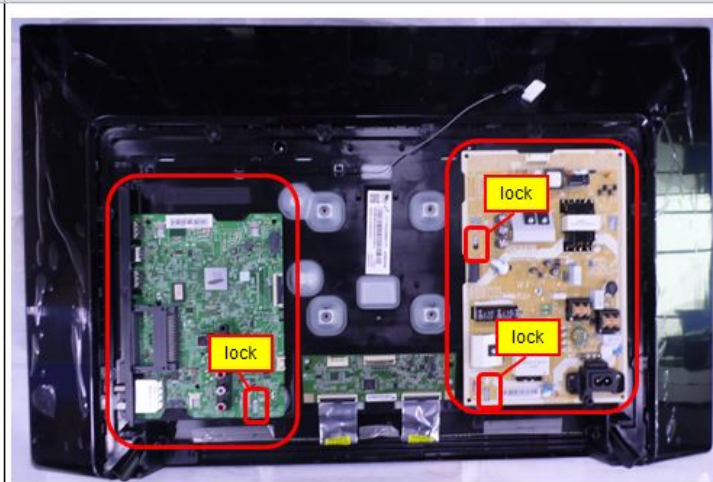


4. Remove the Power cables, LVDS cable, Function cable, LED cable.

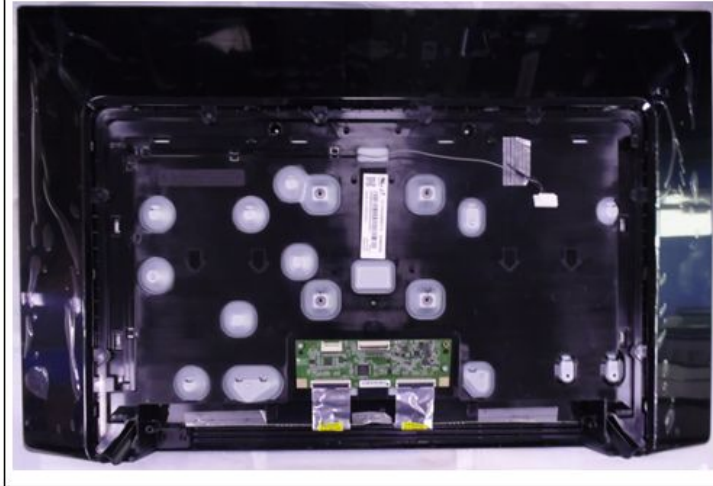


IV. Disassembly

5. Remove the SMPS board and Main board
- Gently lift up to release the lock
 - Use both hands to hold the board and slide UP to release the board



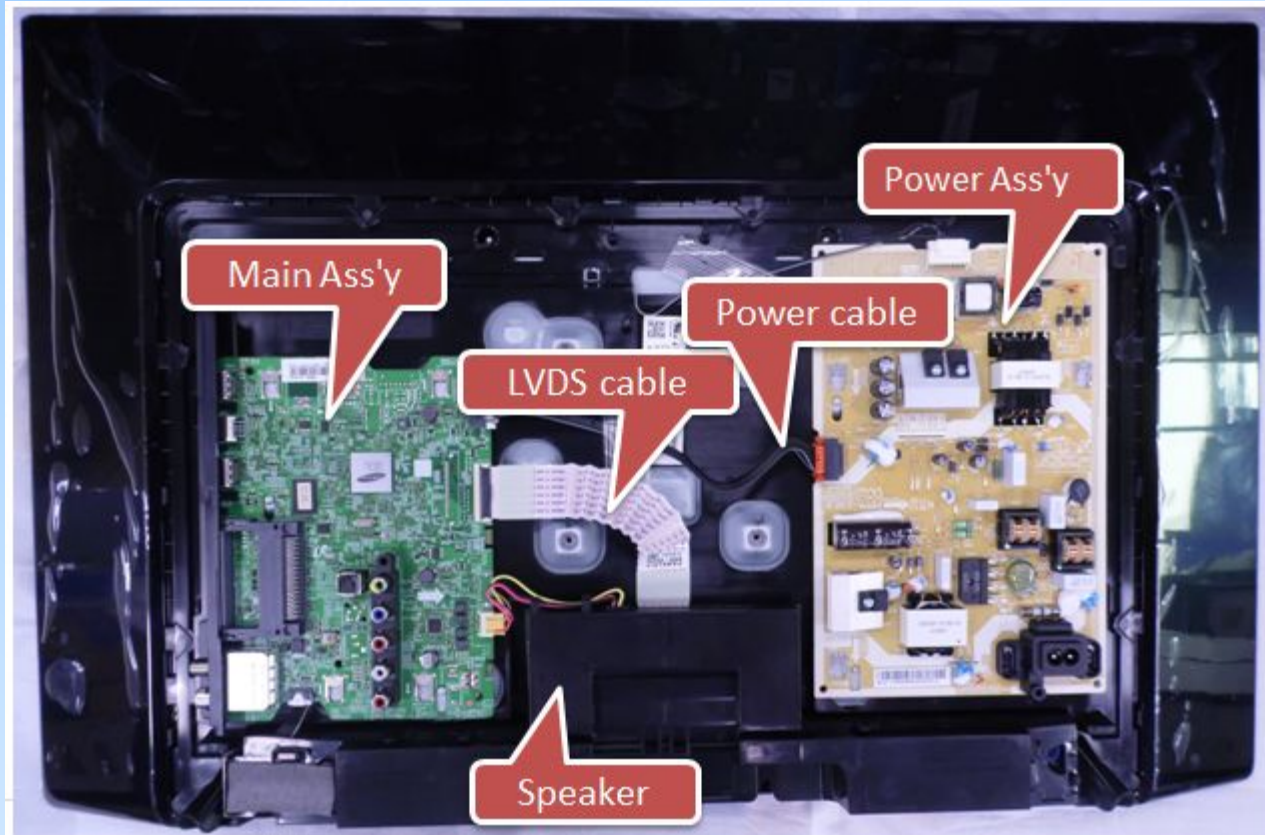
6. Completed disassembly



V . Trouble Shooting



- Check List for Initial operation



V. Trouble Shooting



How to Check Fault Symptom

Power cord on

Check 'Stand-By A13V'
13V appear at BD207?
0V to A13V (CN202 #3)

NO

Cause : There did not supply the power from SMPS
measure : Change 10p power cable or SMPS

YES

Set On

Check 'SW_POWER'
more than B3.3V appear at CN202(#6)
0V to B3.3V ↑ (CN202 #6)

NO

Cause : Main IC(NT16L) did not control the SW_Power
measure : Change the Main Assy

YES

Check 'Power of main IC(B1.15V)' appear at
BD917
Check 'Power of DDR IC(B1.5V)' appear at
BD911

NO

Cause : There is problem at DCDC(IC201)/LDO(IC204)
measure : Change the Assy

YES

Check 'Power of LVDS (13V)'
appear at PANEL_VCC?
0V to 13V (PANEL_VCC)

NO

Cause : There is proble at FET(Q202) or
Main IC(NT16L) did not control the SW_PVCC
measure : Change the Assy

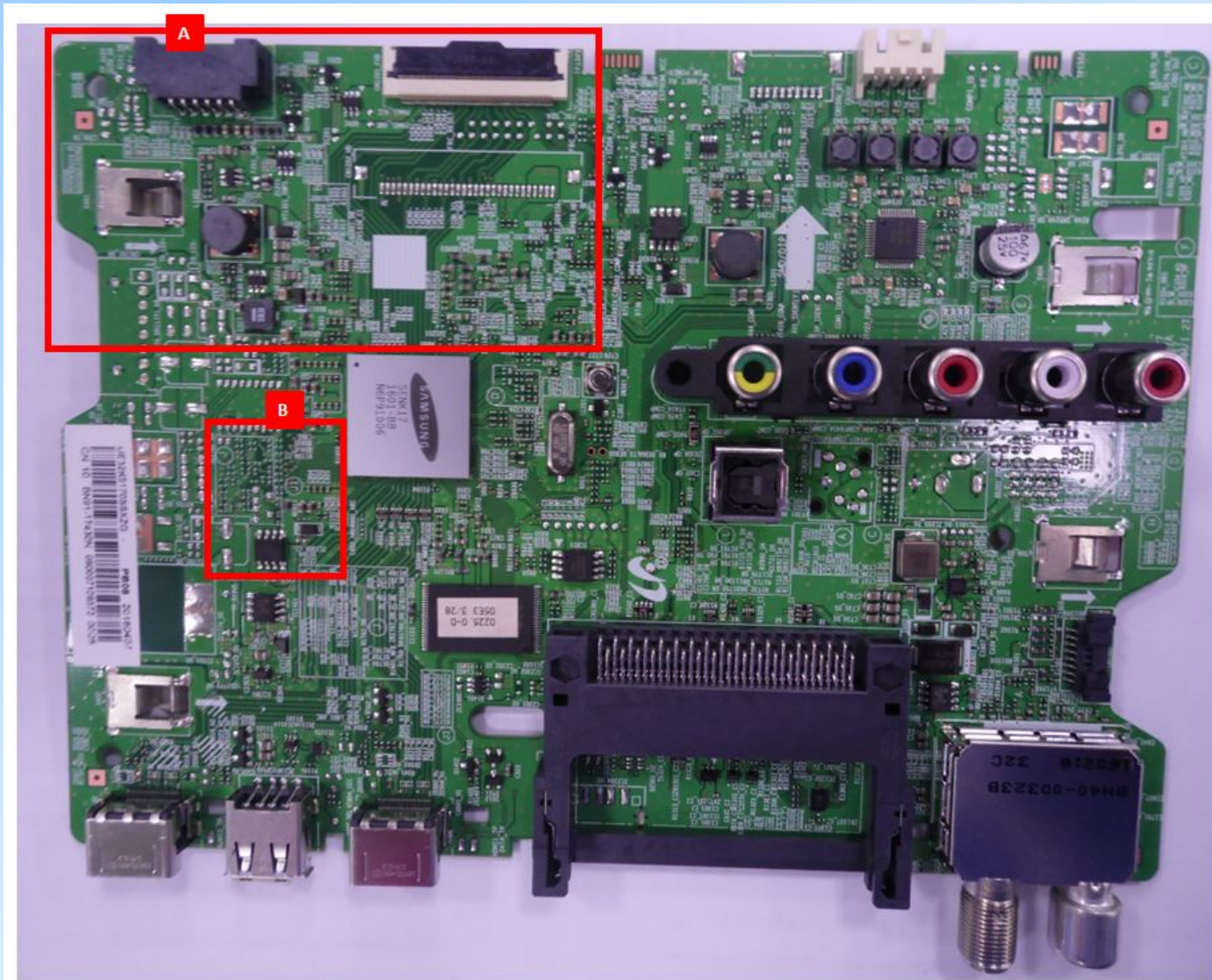
YES

Change the LVDS cable

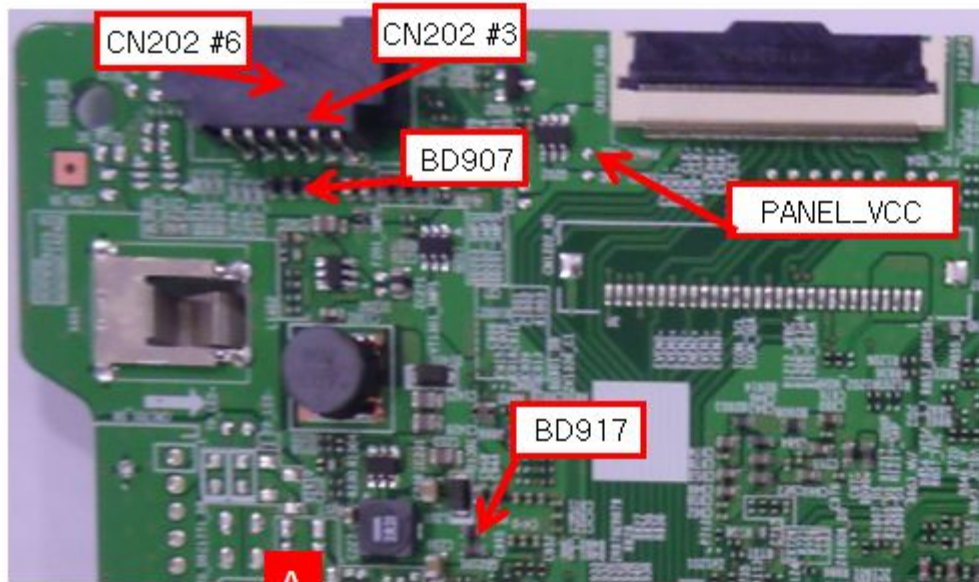
NO

Change the Panel

V. Trouble Shooting



V. Trouble Shooting



V. Trouble Shooting



○ How to check the SW version

■ Use the Main Menu

1. Click the "MENU" key in remote controller.
2. Select "Support" menu.
3. Locate the menu cursor "Software Upgrade" menu.
4. Click the "INFO" key.
 - Check the Main SW and Micom version.



V. Trouble Shooting



How to check the SW version

(2) use the factory mode

- access the factory mode

Option
Control
Debug
SVC
ADC/WB
Advanced
T-N16LDEUC-xxxx.x T-N16LDEUS-xxxx E-Manual : NLDVBEU1H-xxxx E-POP:SUCCESS EDID SUCCESS HDCP SUCCESS CALIB : AV/COMP/PC/HDMI/ Option : 32B6AF0FK,EU_GER,5170,NONE Factory Reset In Production:0 NSP-SDAL-NT16L-xxxx-xxxx RFS:"NT16L xxxx" K/ 20xx-xx-xx KERNEL:xxx.xxxx,/Onboot: xxx TCON Version:---- NSP-DTVTD-xxxx Model: UE32K5170 CIP SUCCESS Factory Data Ver:xxx EERC Version: xxx NSP-BP-HAL-xxxx NSP-AP-CNC-xxxx NSP-AP-MM-xxxx NSP-BP-MW-xxxx NSP-BP-APP-xxxx NSP-PNG-xx-xxxx Date of purchase: -/-/----

V. Trouble Shooting



○ How to Upgrade Software

Insert a USB drive containing the firmware upgrade downloaded from samsung.com into the TV. Please be careful not to disconnect the power or remove the USB drive while upgrades are being applied. The TV will turn off and turn on automatically after completing the firmware upgrade. Please check the firmware version after the upgrades are complete (the new version will have a higher number than the older version). When software is upgraded, video and audio settings you have made will return to their default (factory) settings. We recommend you write down your settings before beginning firmware update. After update is completed, restore your previous settings.

V. Trouble Shooting



● How to Upgrade Software

- store the sw program named **"T-NT16LDEUC"** in USB memory stick
- connect the USB

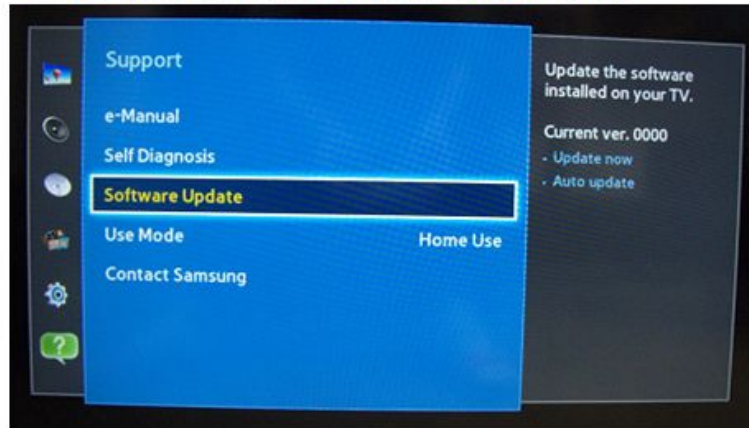


V. Trouble Shooting

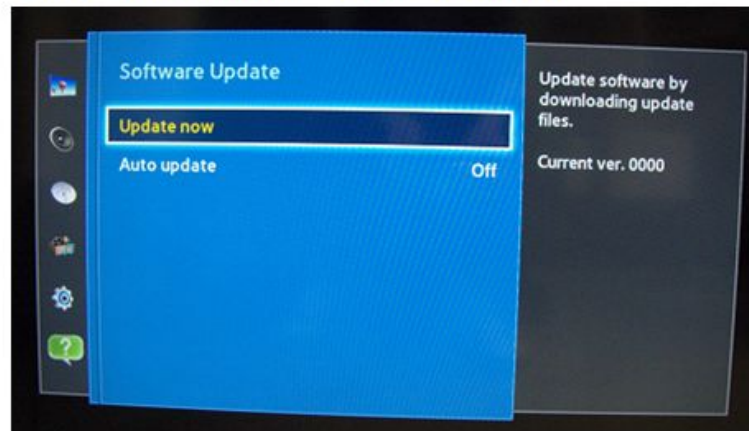


How to Upgrade Software

- click the "menu" key in remote controller
- select Support menu
- locate the menu cursor "Software Update" menu



- locate the menu cursor "Update now" menu



V. Trouble Shooting



How to Upgrade Software

- click the "enter" key



- click the "enter" key



- wait for upgrade complete
- Check the SW version