

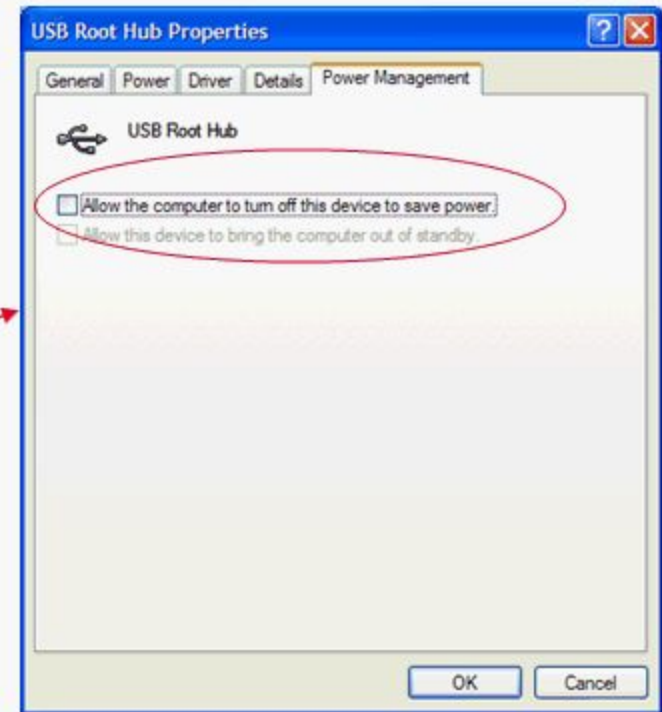
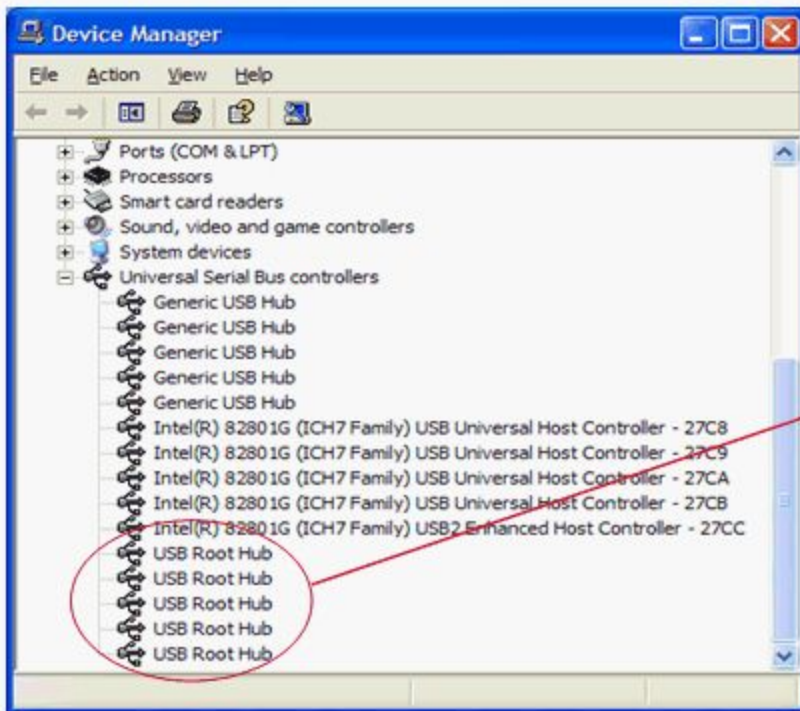
# Madras download R6

SangKyu Yu  
S/W R&D Group – Europe  
SAMSUNG electronics  
2010. 02. 08

---

# Before installing Infineon USB driver

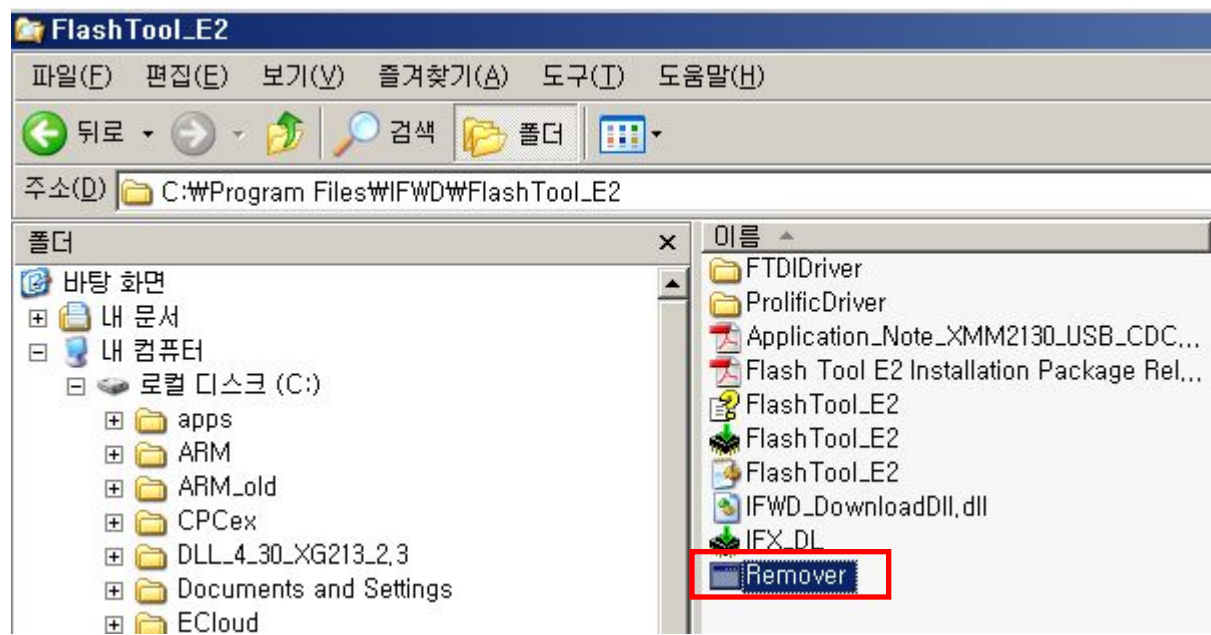
- \* We highly recommend the changing of USB Root Hub properties in Power Management
  - Uncheck** "Allow the computer to turn off this device to save power"



# Driver Installation Guide[1]

## Step1. Remove previous USB driver

- Run Remover.exe.



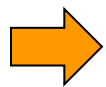
# Driver Installation Guide[2]

## Step2. Install Flash Loader utility USB Driver

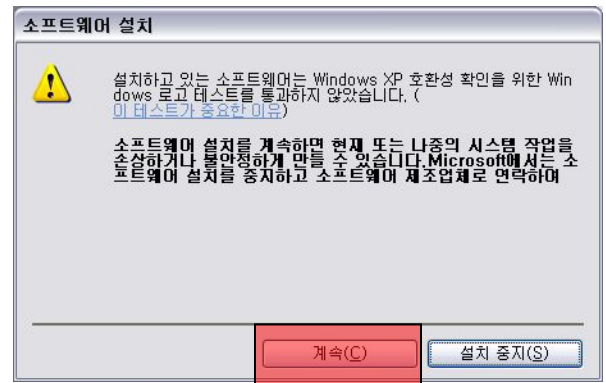
- Unzip **FlashTool\_E2\_R6.zip**
- Run FlashTool\_E2\_R6\FlashUSB\Setup.exe.
- Press 'Exit' to complete the Installation of 'Flash Loader utility driver'



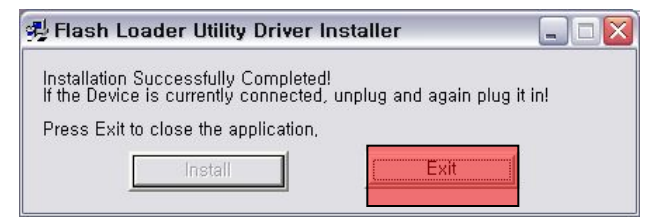
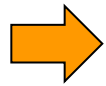
[ Click install button ]



[ Click OK button ]



[ Click continue button ]

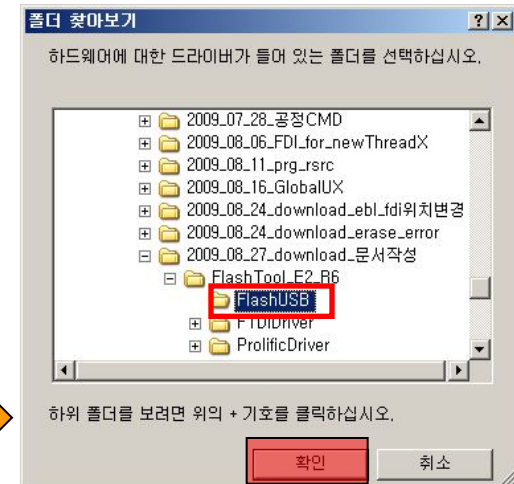
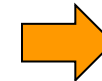
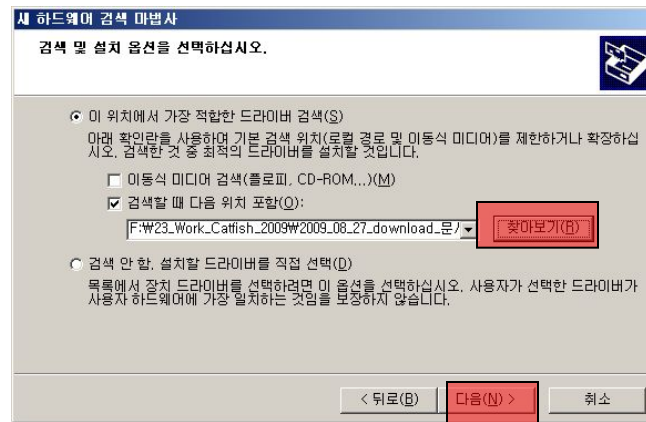
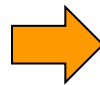
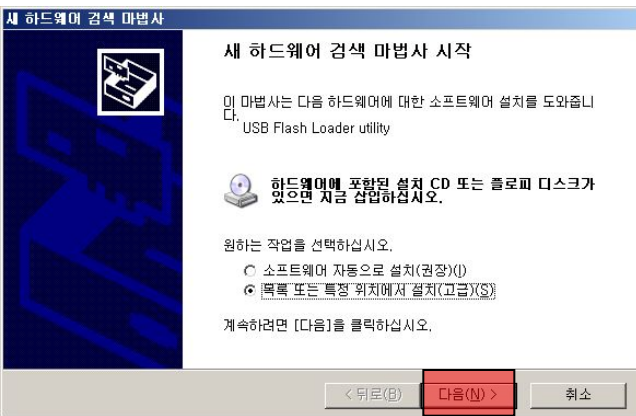


[ Click Exit button ]

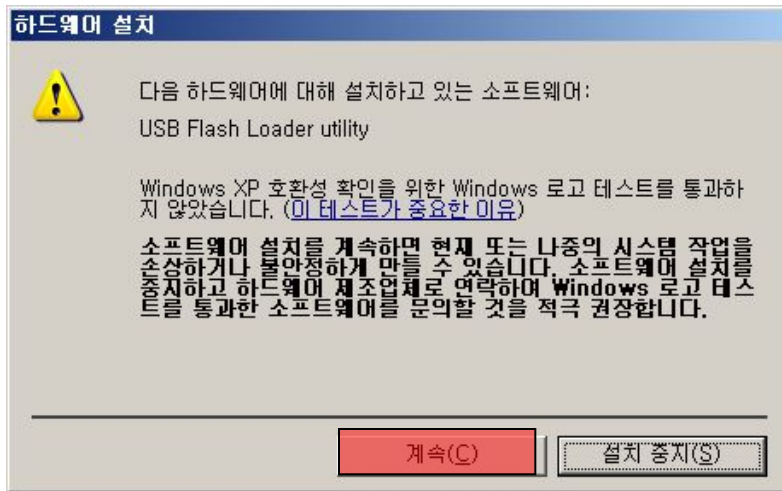
# Driver Installation Guide[3]

## Step3.

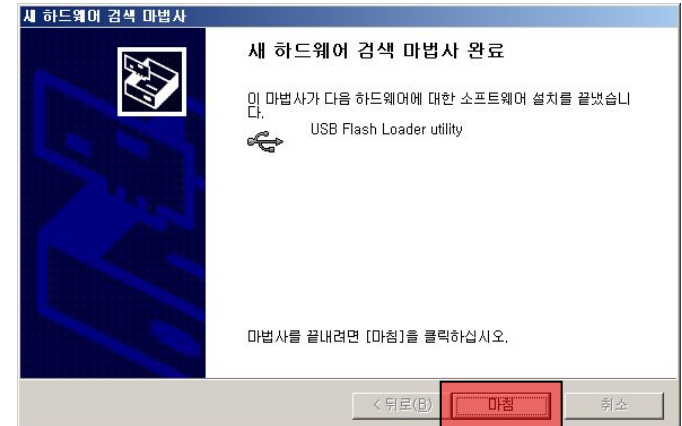
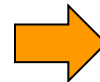
- Connecting target without battery and PC via USB cable
- PC executes the Hardware searching wizard automatically
- Please set the path as "FlashTool\_E2\_R6\FlashUSB"
- "USB flash loader utility" will be installed successfully.



# Driver Installation Guide[4]



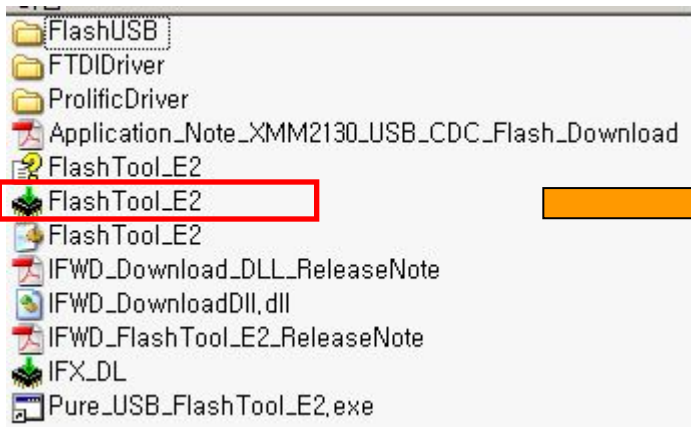
[ Click continue button ]



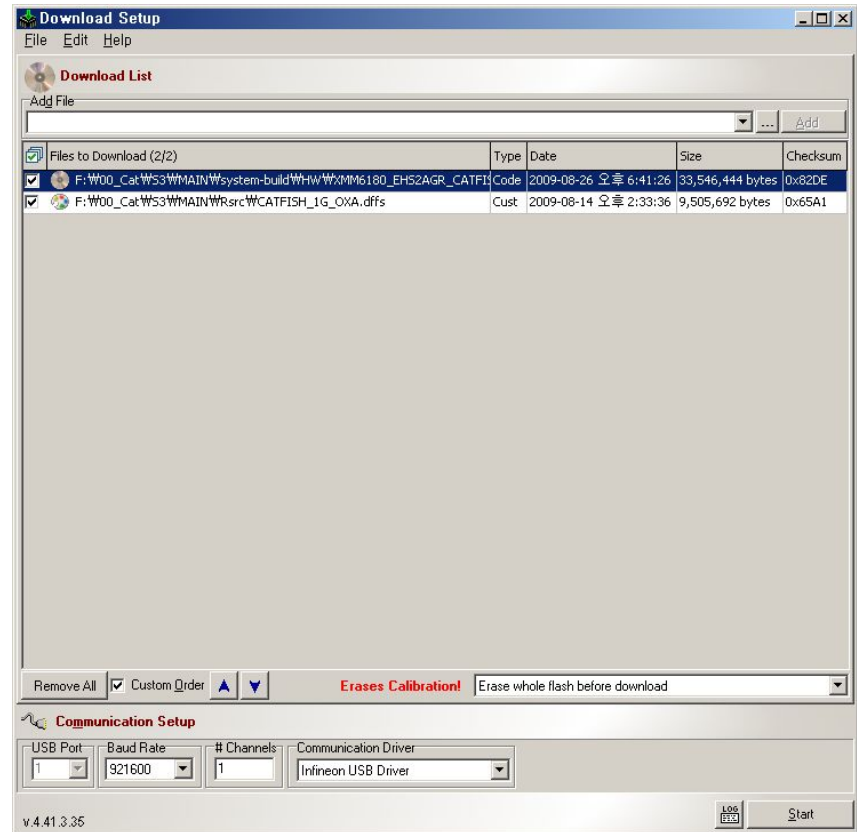
[ Click finish button ]

# Flash Tool Usage Guide[1]

- Execute FlashTool\_E2\_R6\FlashTool\_E2.exe
- Check the version **v.4.41.3.35**



[ FlashTool\_E2\_R6.zip ]



[ FlashTool\_E2.exe ]

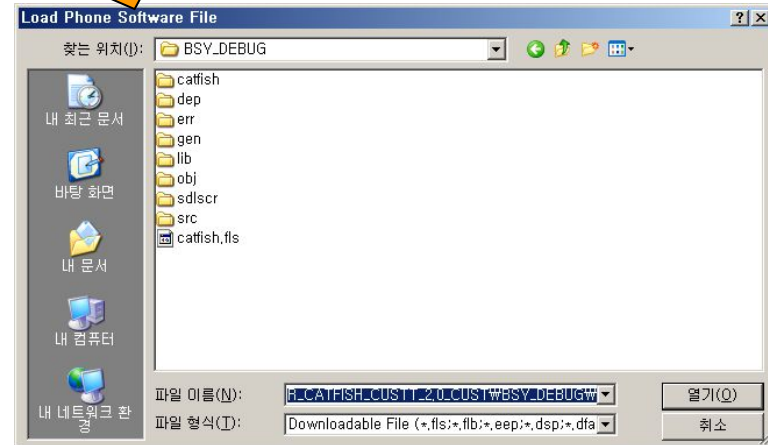
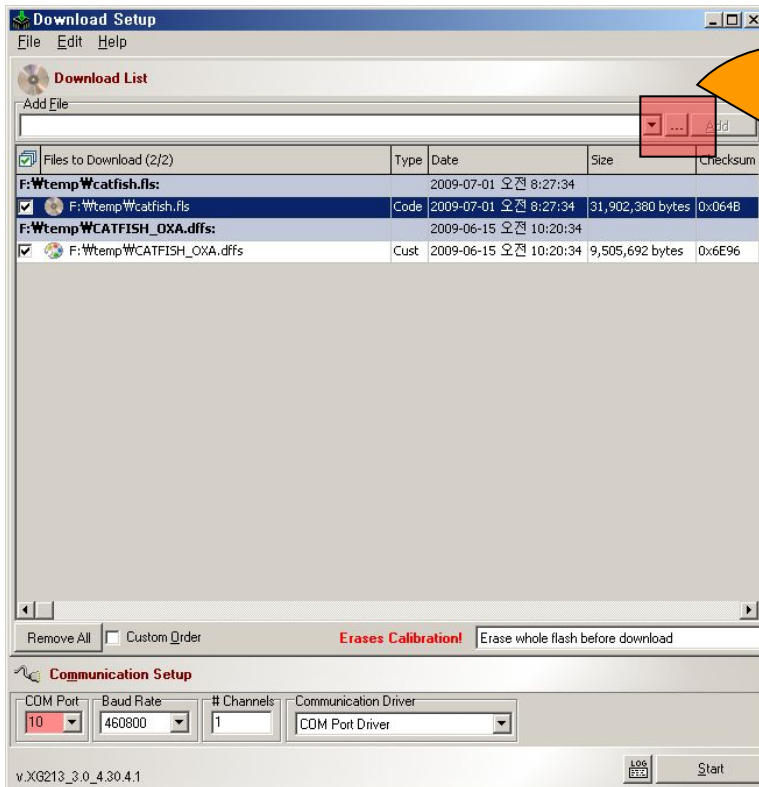
**Flashtool version :  
v.4.41.3.35**



# Flash Tool Usage Guide[2]

## a. Add binary files

Browser for file



**\* These can be added via "Drag & Drop"**



# Flash Tool Usage Guide[3]

## \* Download file list.

### [ Target Software ]

- C3200XXXXX\_bin.flc
- C3200XXXXX\_cds.flc

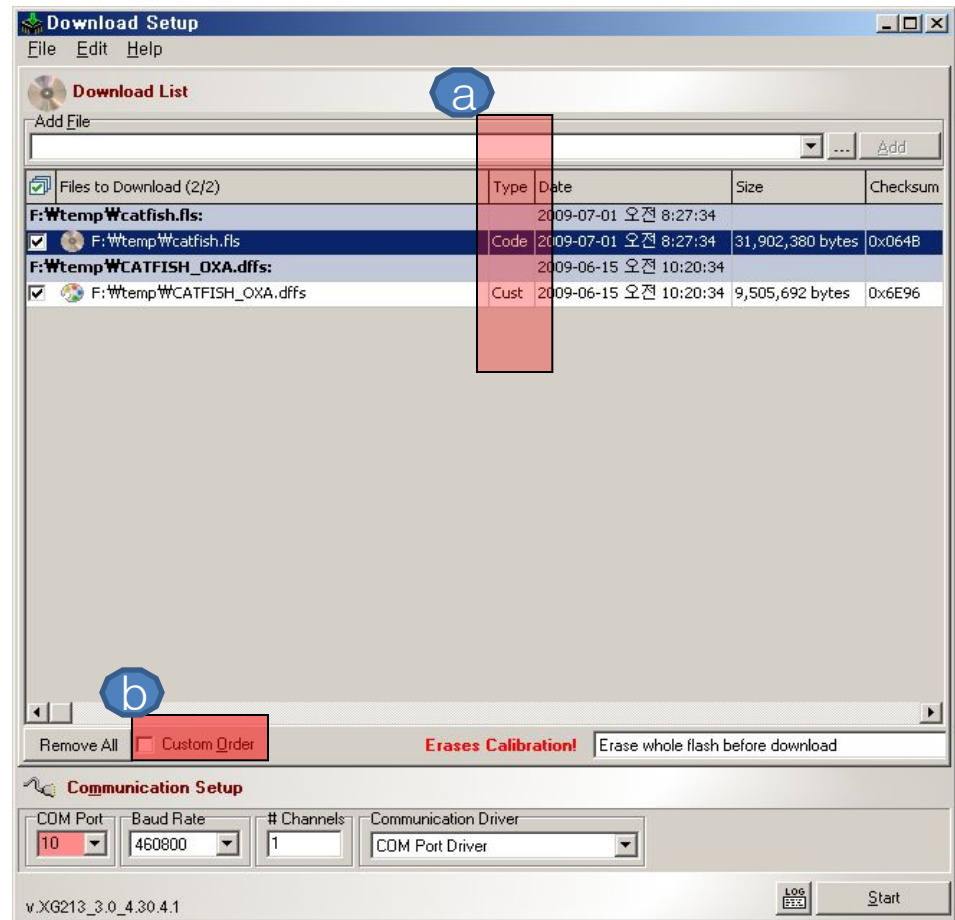
### [ Resource File ]

- C3200XXXXX.dffs

a. Binary sequence should be set as

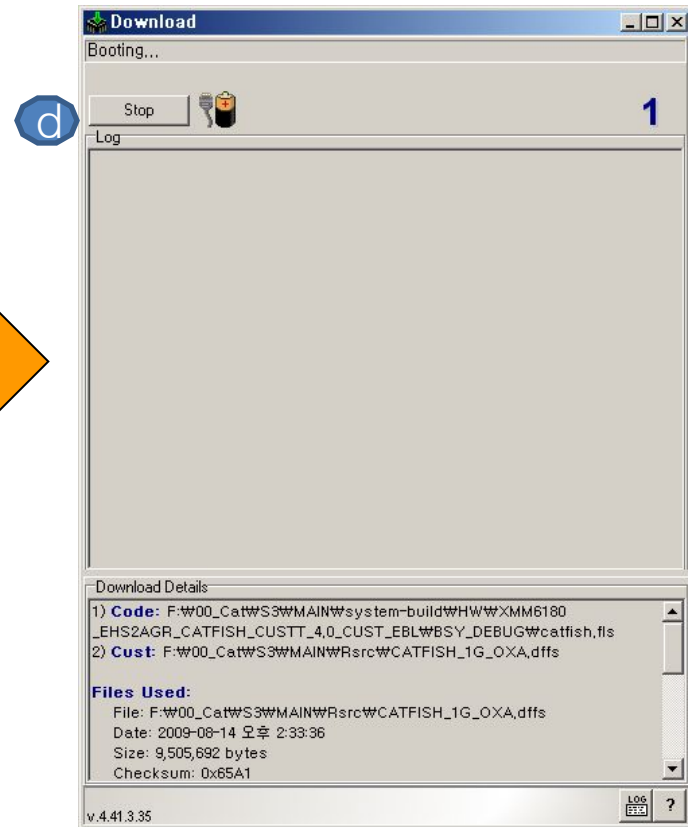
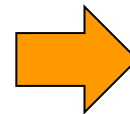
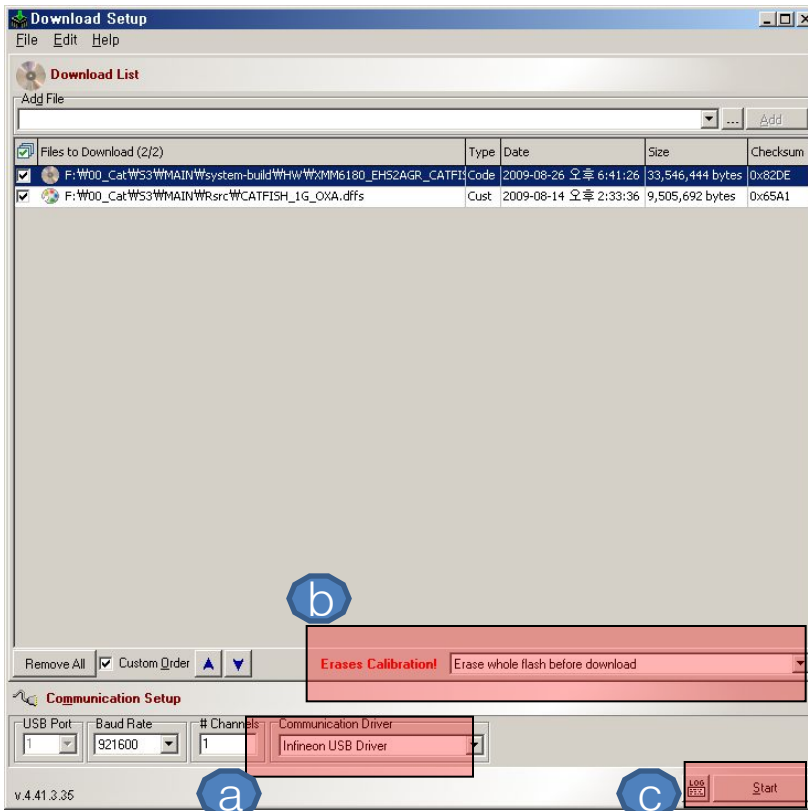
**a->b->c.**

b. This can be done automatically by checking '**Customer Order**'



# Flash Tool Usage Guide[4]

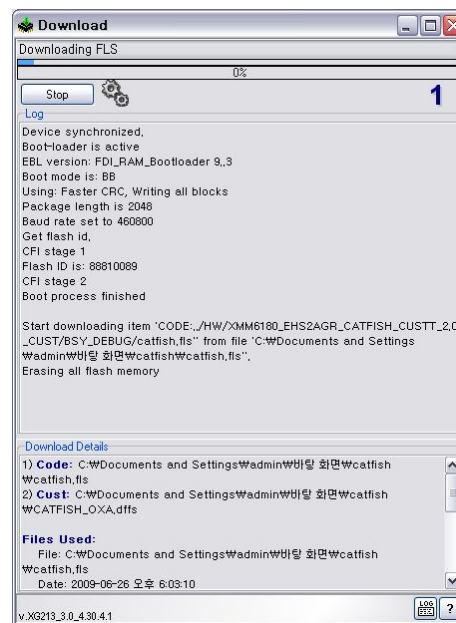
- a. Communication Driver should be set as **Infineon USB Driver**
- b. Choose the '**Erase whole flash before download**'
- c. Click [Start] Button.
- d. Click [Start USB1] Button.



# Flash Tool Usage Guide[5]

## a. Connect the power-off target with battery via USB cable

- The download will start automatically.



Thank You

---