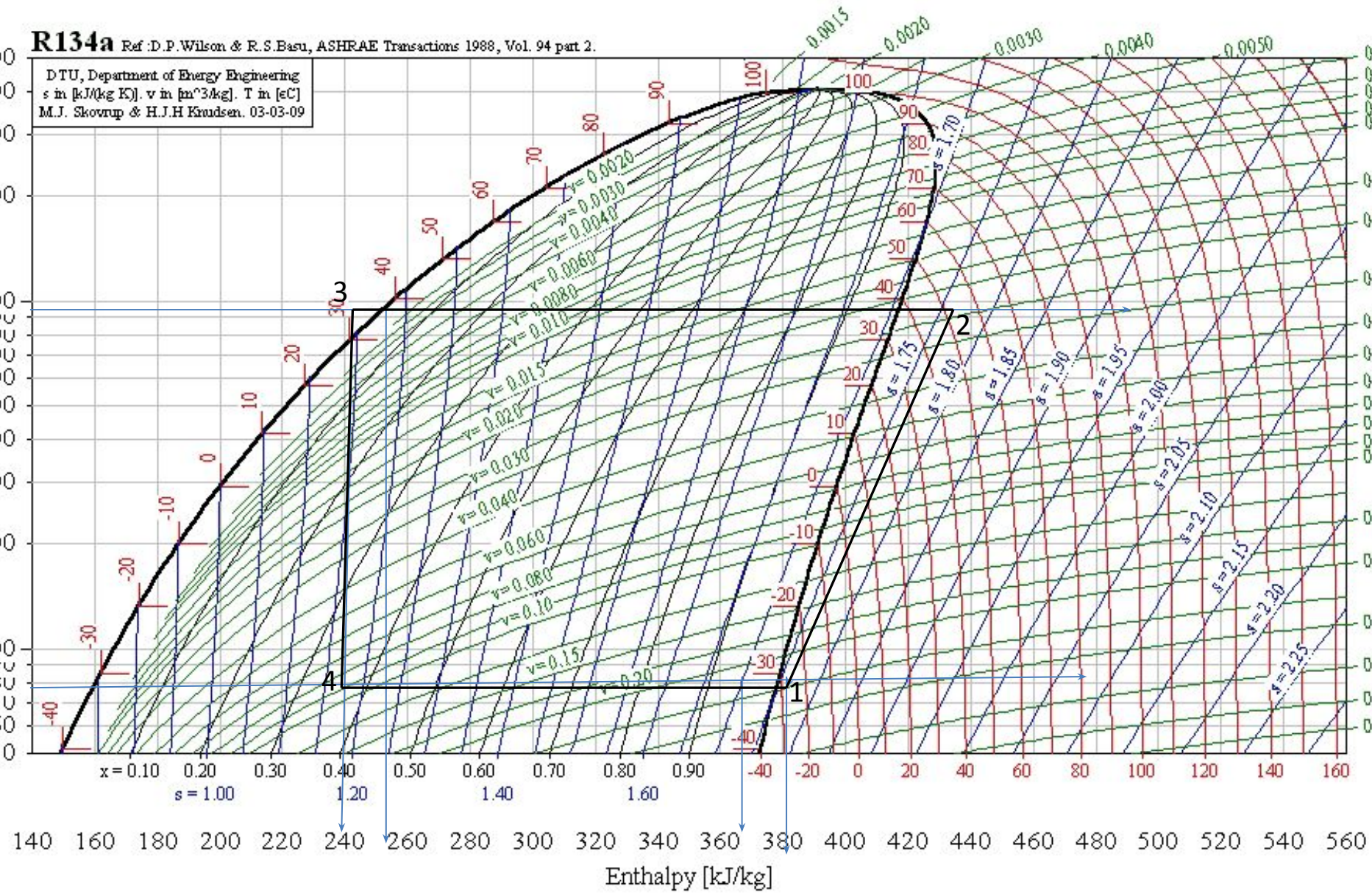
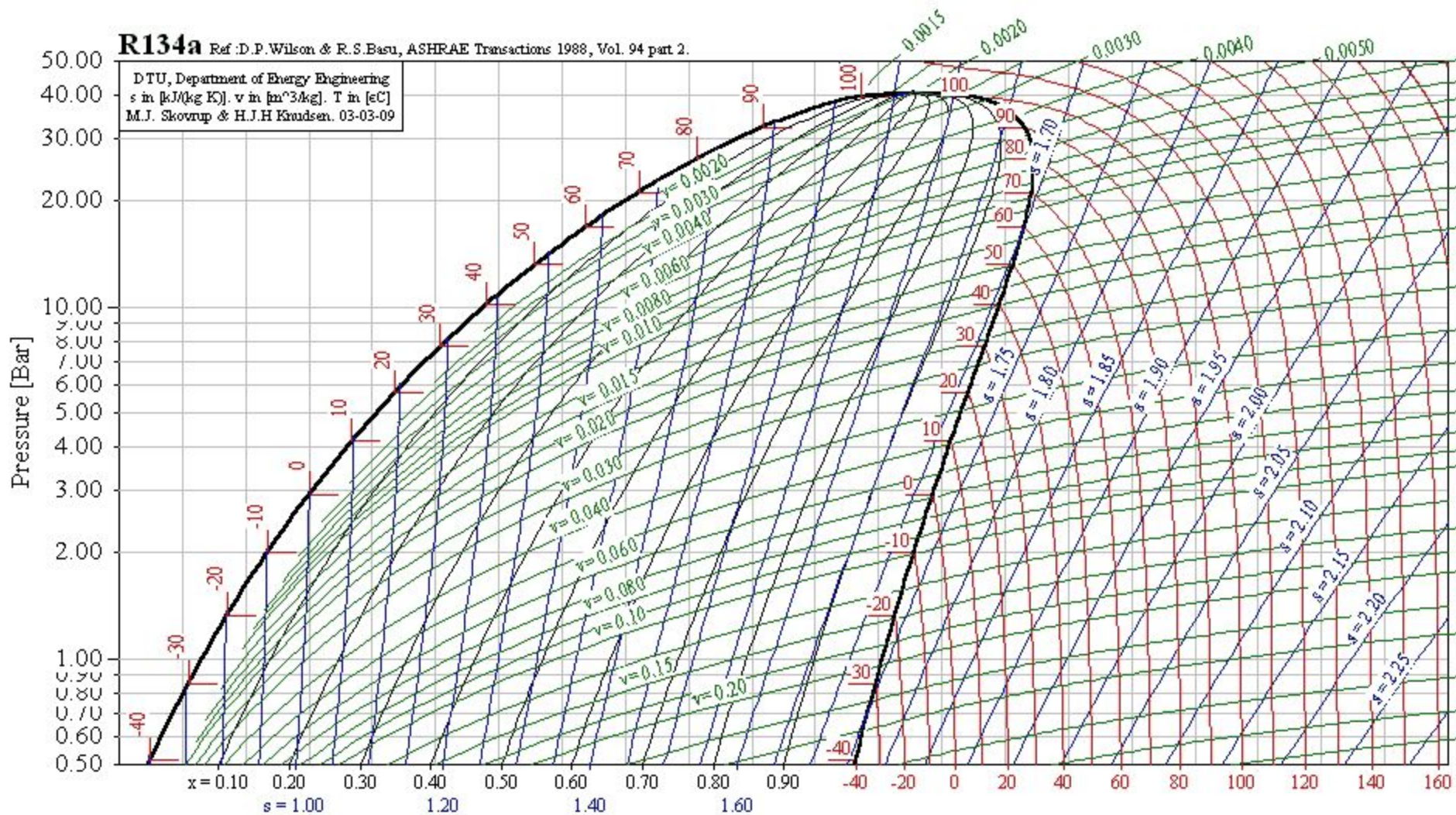


DTU, Department of Energy Engineering
 s in [kJ/kg K], v in [m³/kg], T in [°C]
 M.J. Skovrup & H.J.H Knudsen. 03-03-09



R134a Ref :D.P.Wilson & R.S.Basu, ASHRAE Transactions 1988, Vol. 94 part 2.

DTU, Department of Energy Engineering
 s in [kJ/kg K], v in [m³/kg], T in [°C]
 M.J. Skovrup & H.J.H Knudsen. 03-03-09



140 160 180 200 220 240 260 280 300 320 340 360 380 400 420 440 460 480 500 520 540 560

i_1, i_4 - удельная хладопроизводительность Enthalpy [kJ/kg]

i_2, i_3 - теплоотвод в конденсаторе

$i_2 - i_1$ - работа процесса сжатия компрессора