

POLO

Maintenance Instruction

TABLE OF CONTENTS

1 about POLO

2 Distribution of the main board components

2.1 TOP

2.2 BOTTOM

3 Baseband

3.1 System block Diagram

3.2 Power management

3.2.1 Block Diagram

3.2.2 Power list

4 Reference for maintenance

4.1 No power on

4.2 Download fail

4.3 Audio

4.3.1 No ring

4.3.2 No receiving voice

4.3.3 Speaker echo

4.3.4 No sending voice

4.3.5 Earphone detect fail

4.3.6 Earphone inefficacy

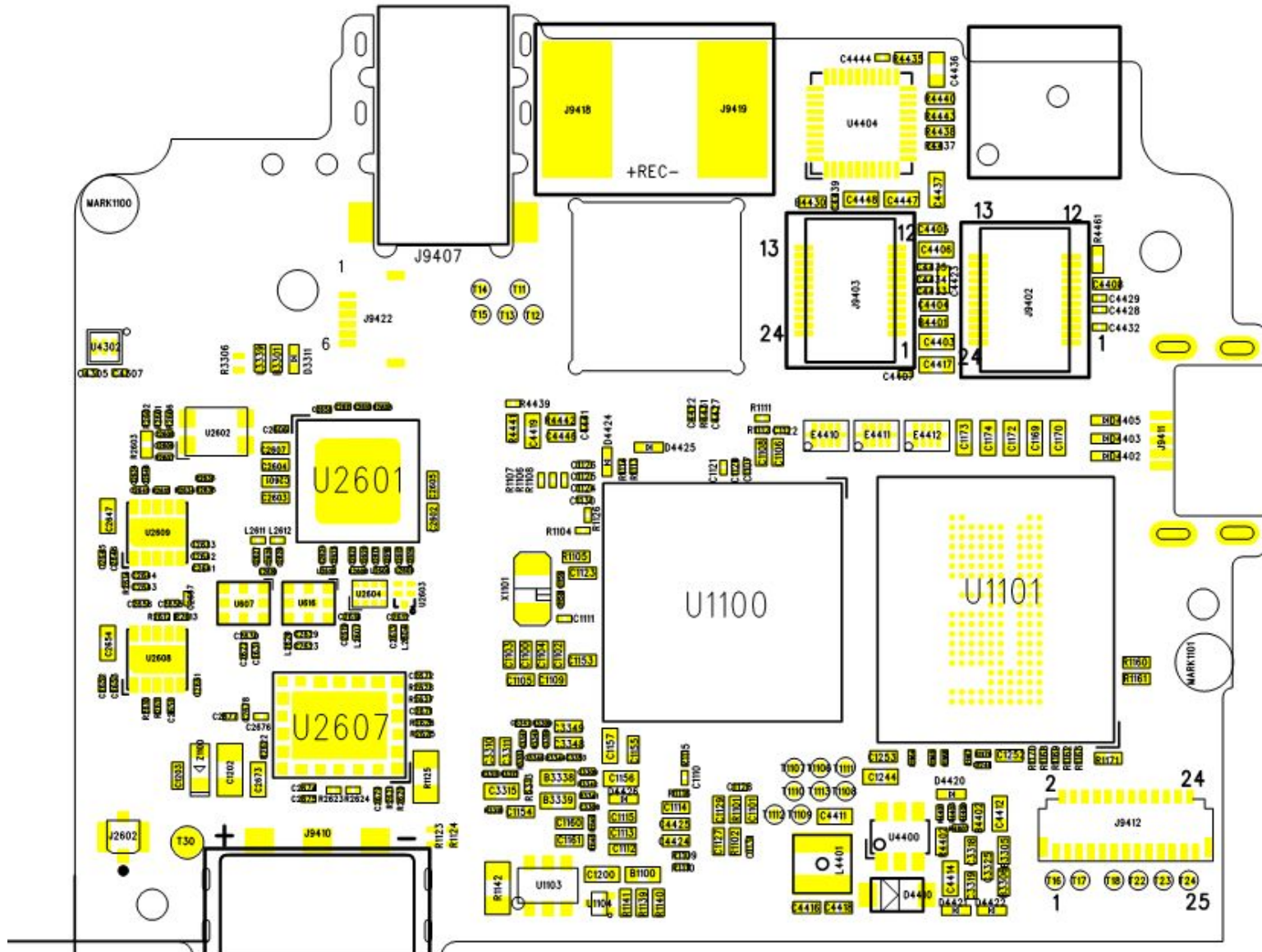
- 4.4 No vibration
- 4.5 No charge
- 4.6 Camera inefficacy
- 4.7 LCD
 - 4.7.1 LCD display wrong
 - 4.7.2 LCD backlight inefficacy
- 4.8 Bluetooth
 - 4.8.1 power on fail
 - 4.8.2 Connect fail/bad voice
- 4.9 WIFI inefficacy
- 4.10 FM inefficacy
- 4.11 Key NG
- 4.12 KEY LED NG
- 4.13 Sensor
 - 4.13.1 proximity sensor NG
 - 4.13.2 Gsensor NG
- 4.14 SIM card inefficacy
- 4.15 TF card inefficacy
- 4.16 GPS inefficacy
- 4.17 TP inefficacy

1 . About POLO

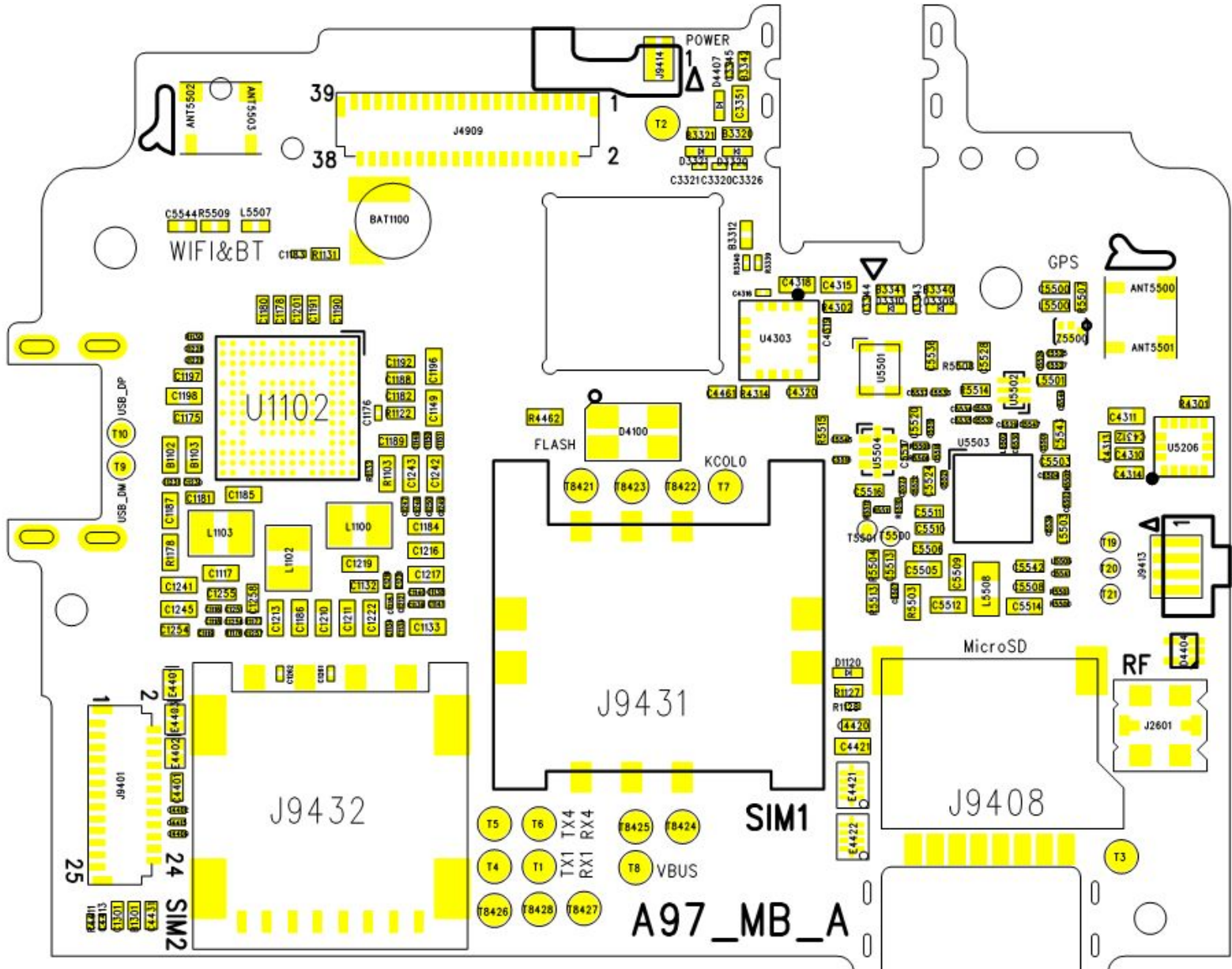
POLO is based on MTK MT6577 platform designed Smartphone.
Support all main functions like WIFI/GPS/BT/FM/CTP and so on.

2 Distribution of the mainboard components

2.1 TOP

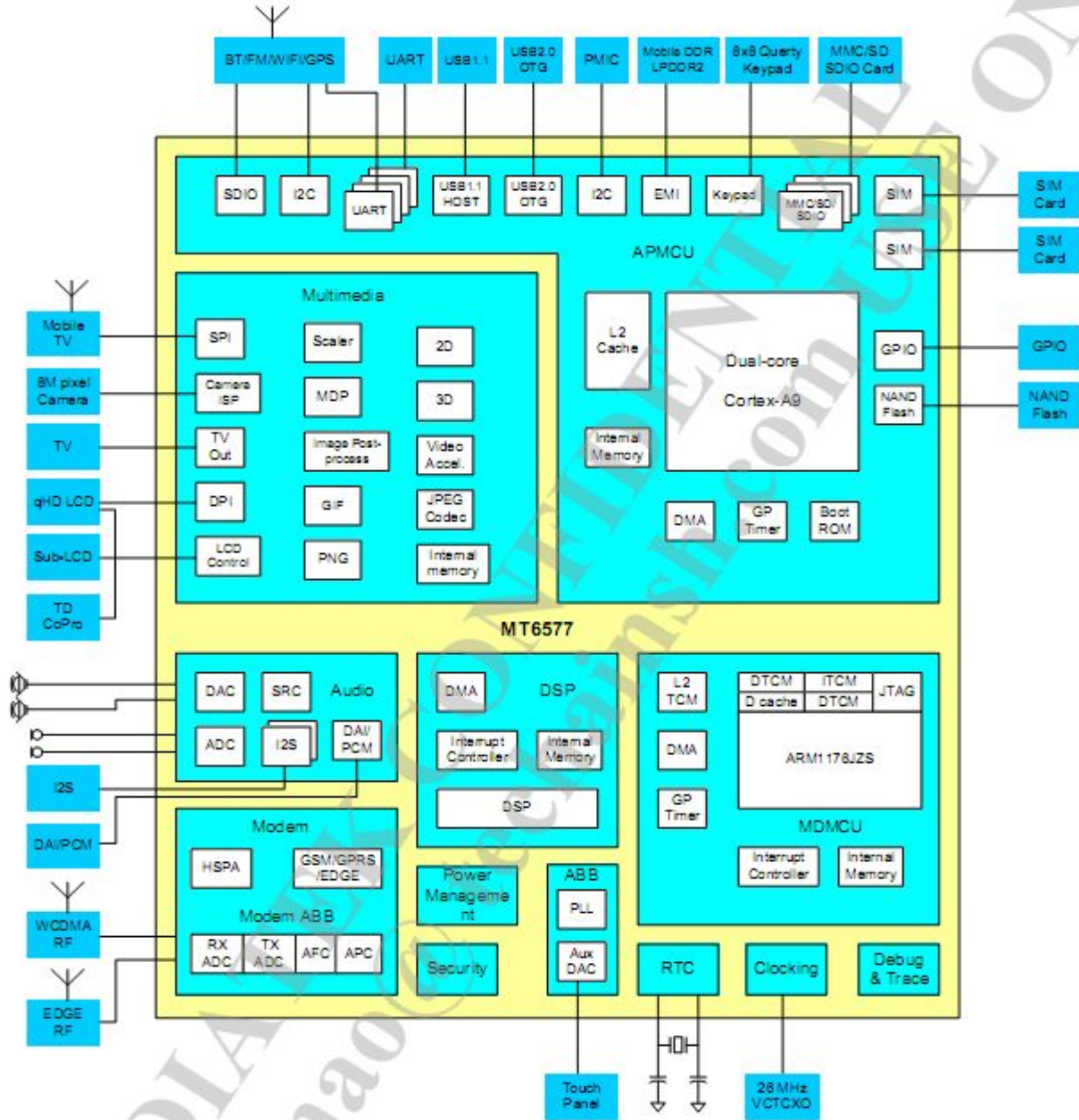


2.2 BOTTOM



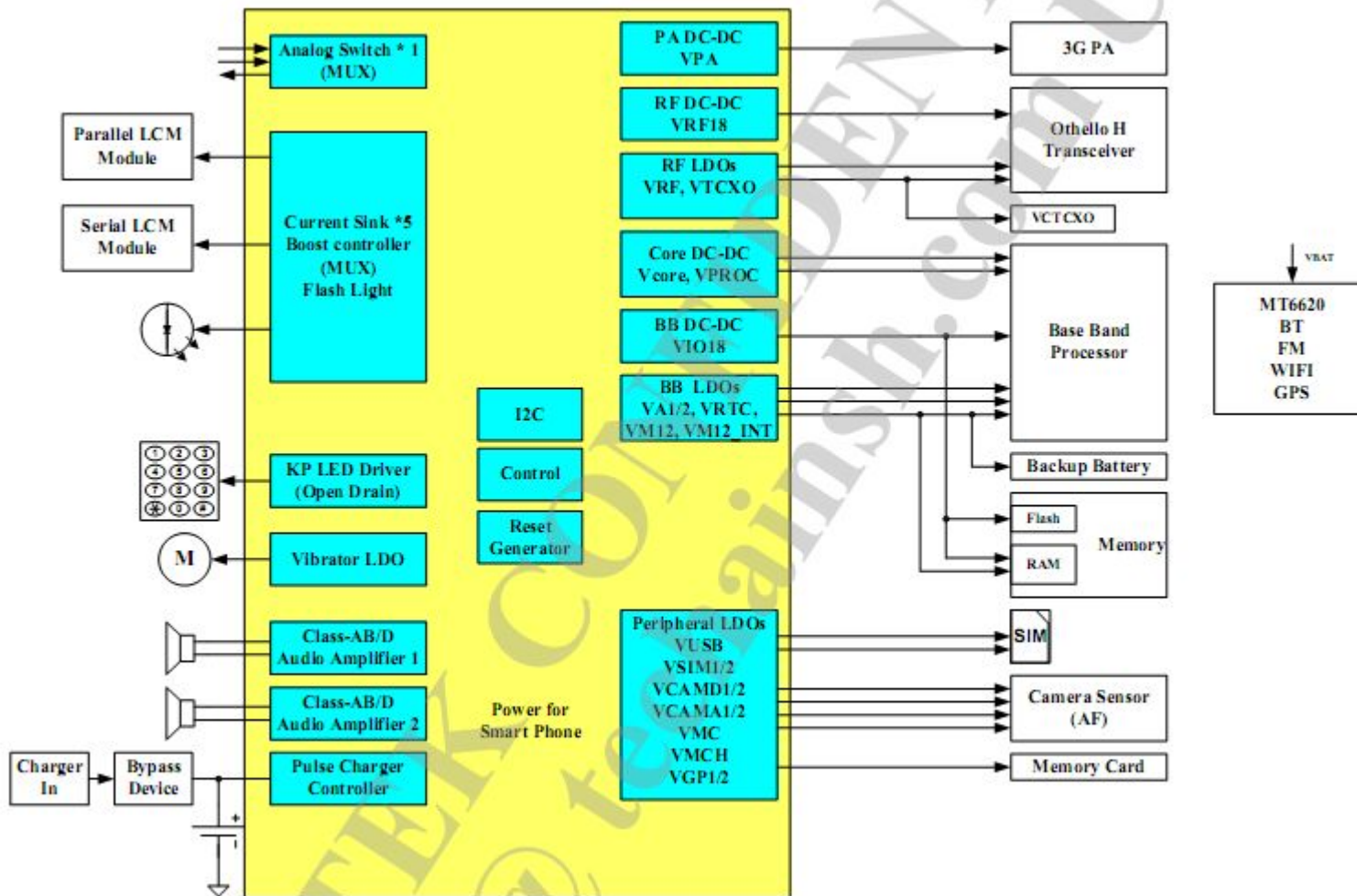
3 Baseband

3.1 System block Diagram



3.2 Power management

3.2.1 power management Block Diagram

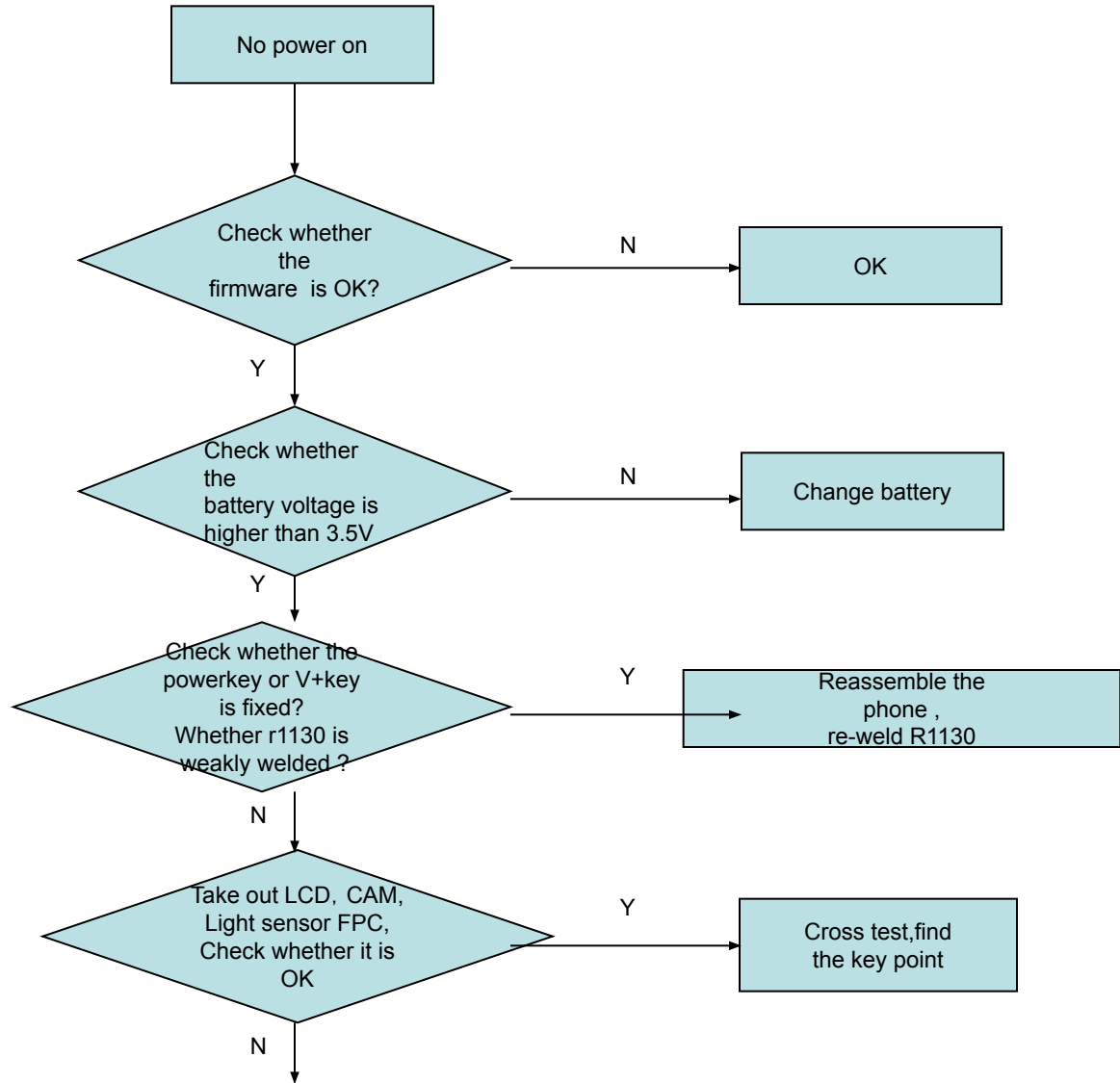


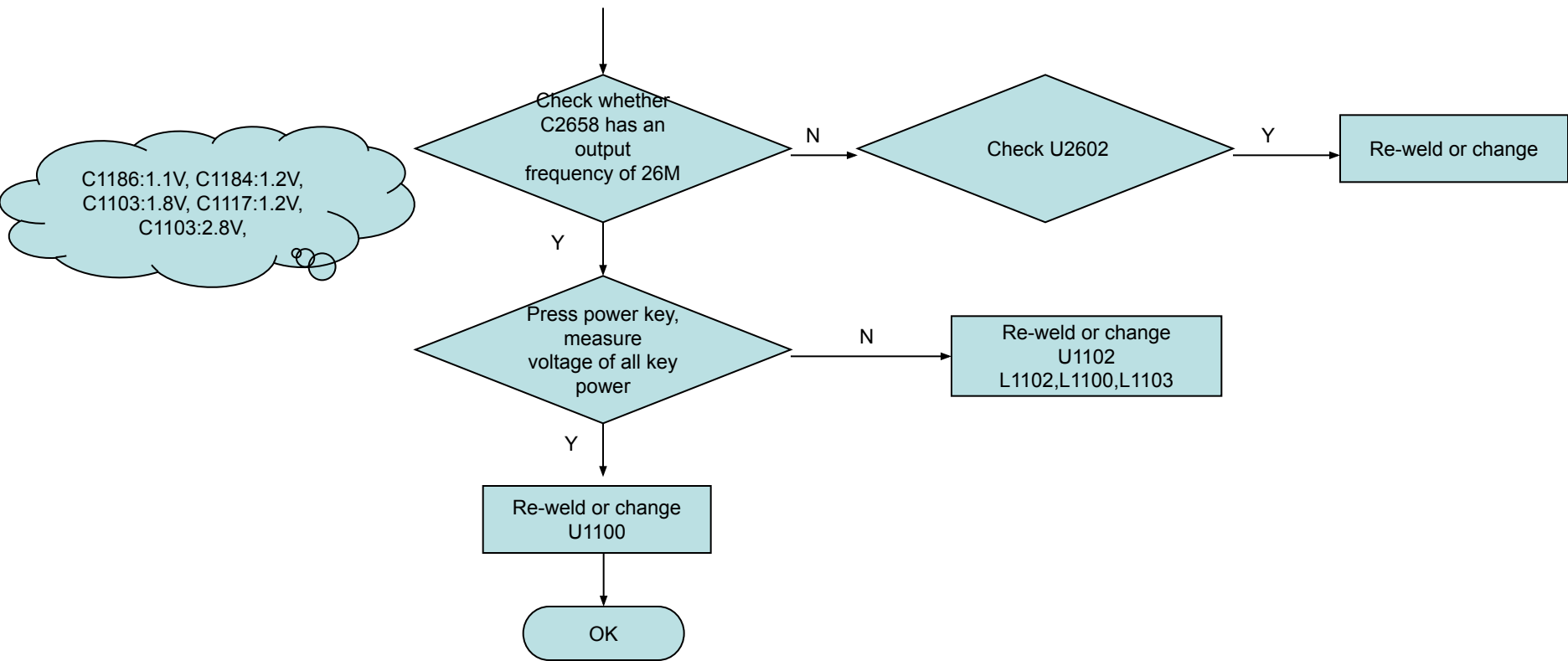
MT6329 Power List

	Symbol	V _{out} (V)	I _{out} (mA)	
Buck	VPA	0.9 ~ 3.4 (100mV/step)	800	
	VPROC	0.75 ~ 1.3 (25mV/step)	1500	
	VRF1B	1.825	250	
	VCDRE	0.75 ~ 1.3 (25mV/step)	1000	
	VIO1B	1.8	1000	
Analog LDO	VRF2B	2.85	200	
	VTCXO	2.8	40	
	VCAMA	1.5/1.6/2.5/2.8	200	
Digital LDO	VA1	1.8/2.0/2.1/2.5	100	
	VA2	2.5/2.8	100	
	VM12_1	1.2	300	
	VM12_2	1.2	300	
	VM12_INT	1.2	300	
	VIO2B	2.8	100	
	VSIM1	1.8/3.0	100	
	VSIM2	1.3/1.5/1.8/2.5/2.8/3.0/3.3	100	
	VUSB	3.3	100	
	VCAMD	1.2/1.3/1.5/1.8/2.5/2.8/3.0/3.3	300	
	VCAM_IO	1.3/1.5/1.8/2.5/2.8/3.0/3.3	100	
	VCAM_AF	1.3/1.5/1.8/2.5/2.8/3.0/3.3	200	
	VMC	1.3/1.5/1.8/2.5/2.8/3.0/3.3	200	
	VMCH	1.3/1.5/1.8/2.5/2.8/3.0/3.3	400	
	VGP	1.3/1.5/1.8/2.5/2.8/3.0/3.3	100	
	VGP2	1.3/1.5/1.8/2.5/2.8/3.0/3.3	100	
	Vibrator	VIBR	1.3/1.5/1.8/2.5/2.8/3.0/3.3	200
	RTC	VRTC	1.8/2.0/2.1/2.8	2

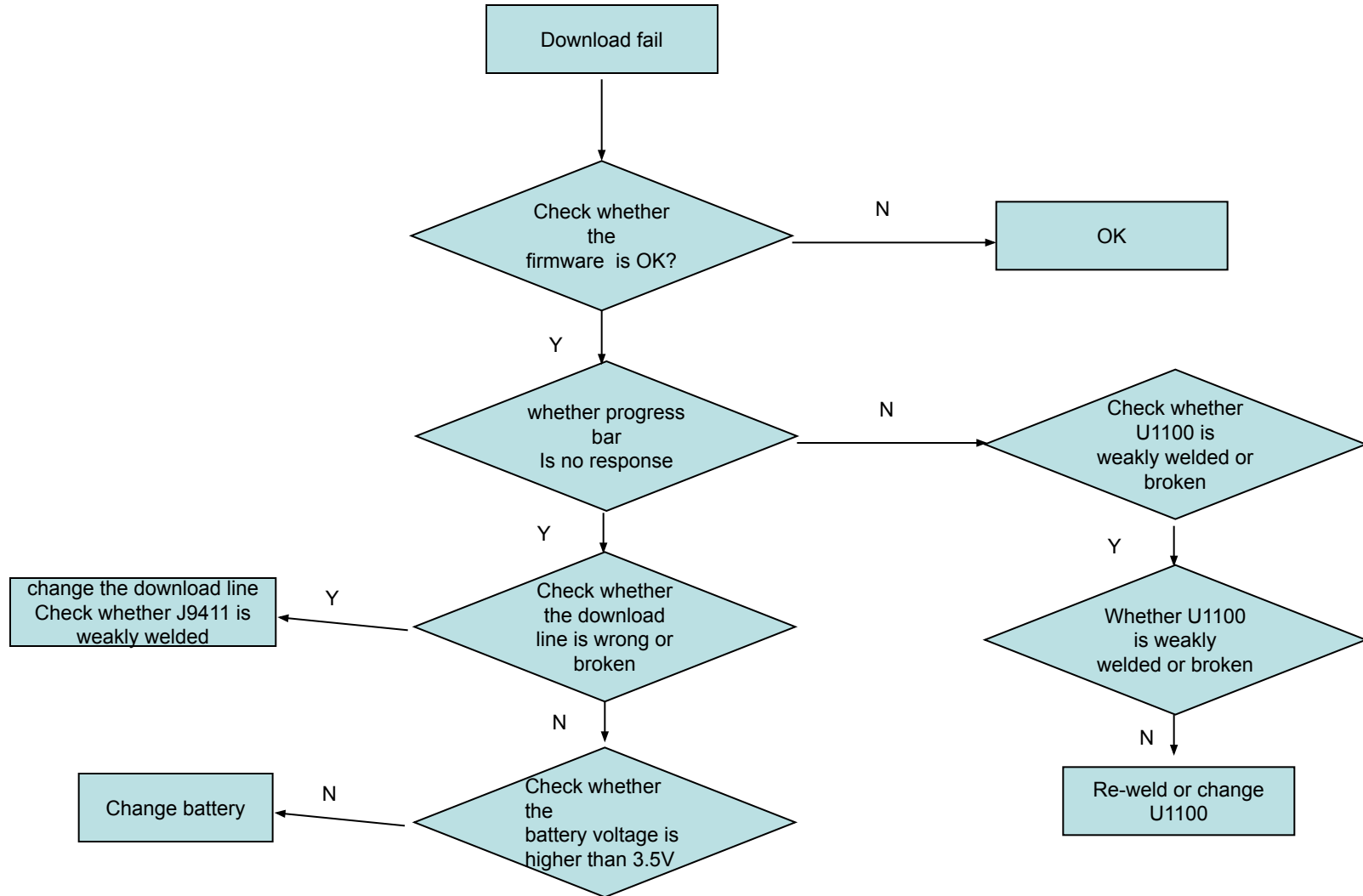
4 Reference for maintenance

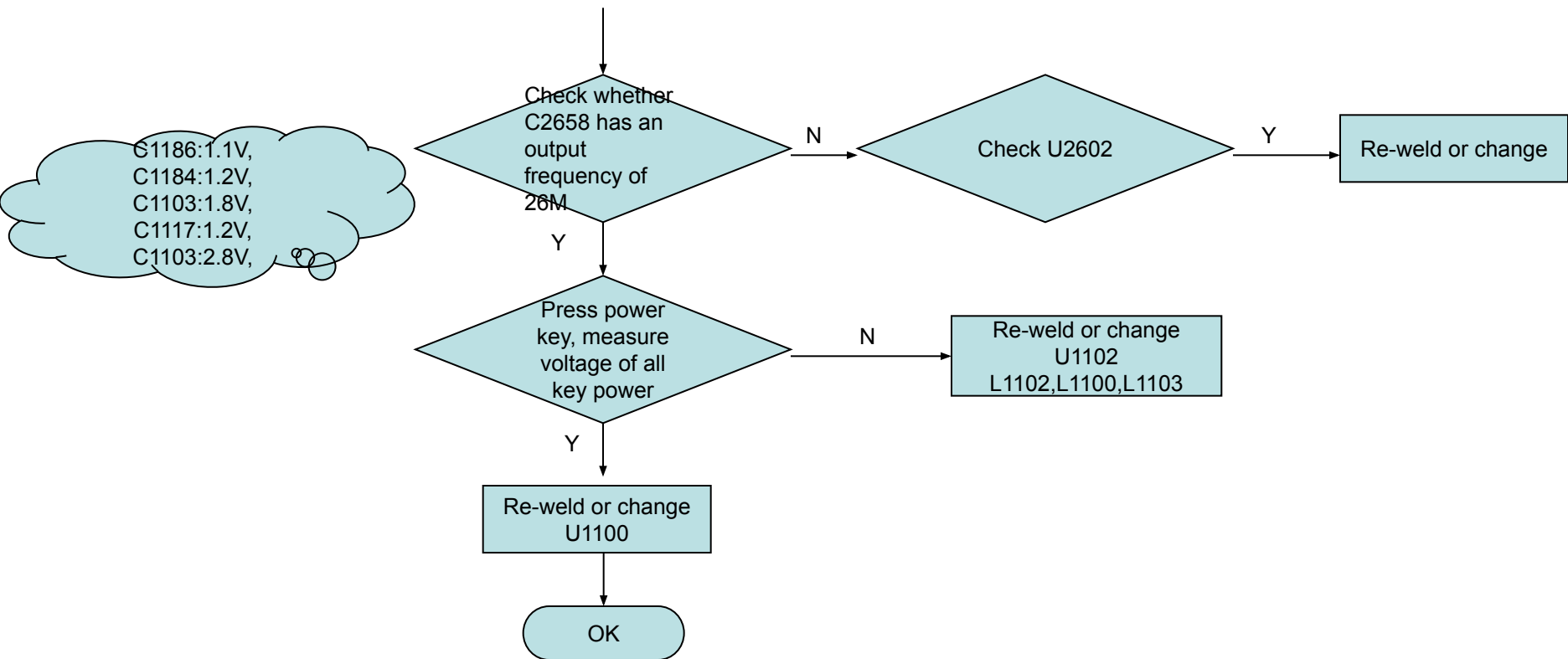
4.1 No power on



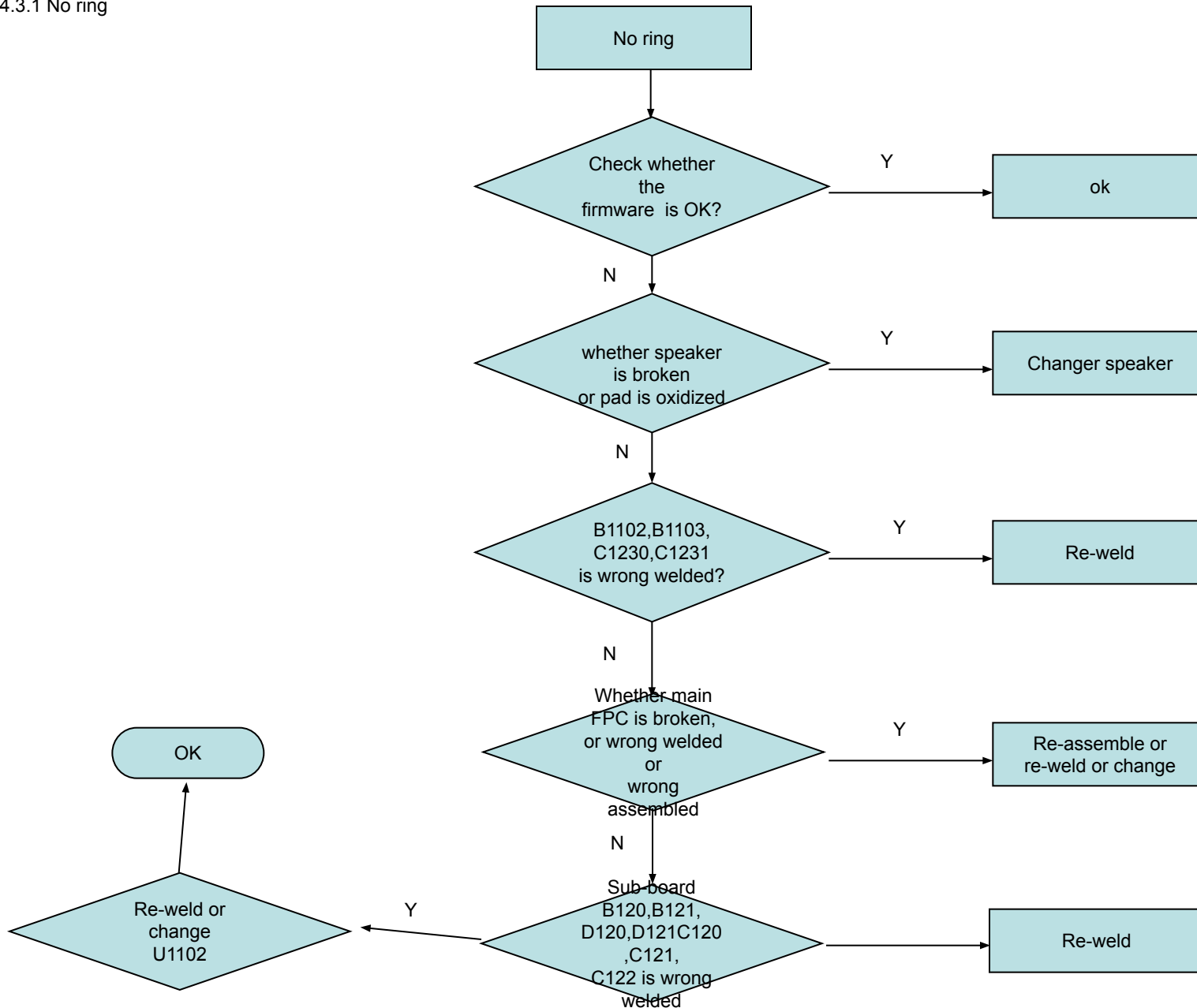


4.2 Download fail

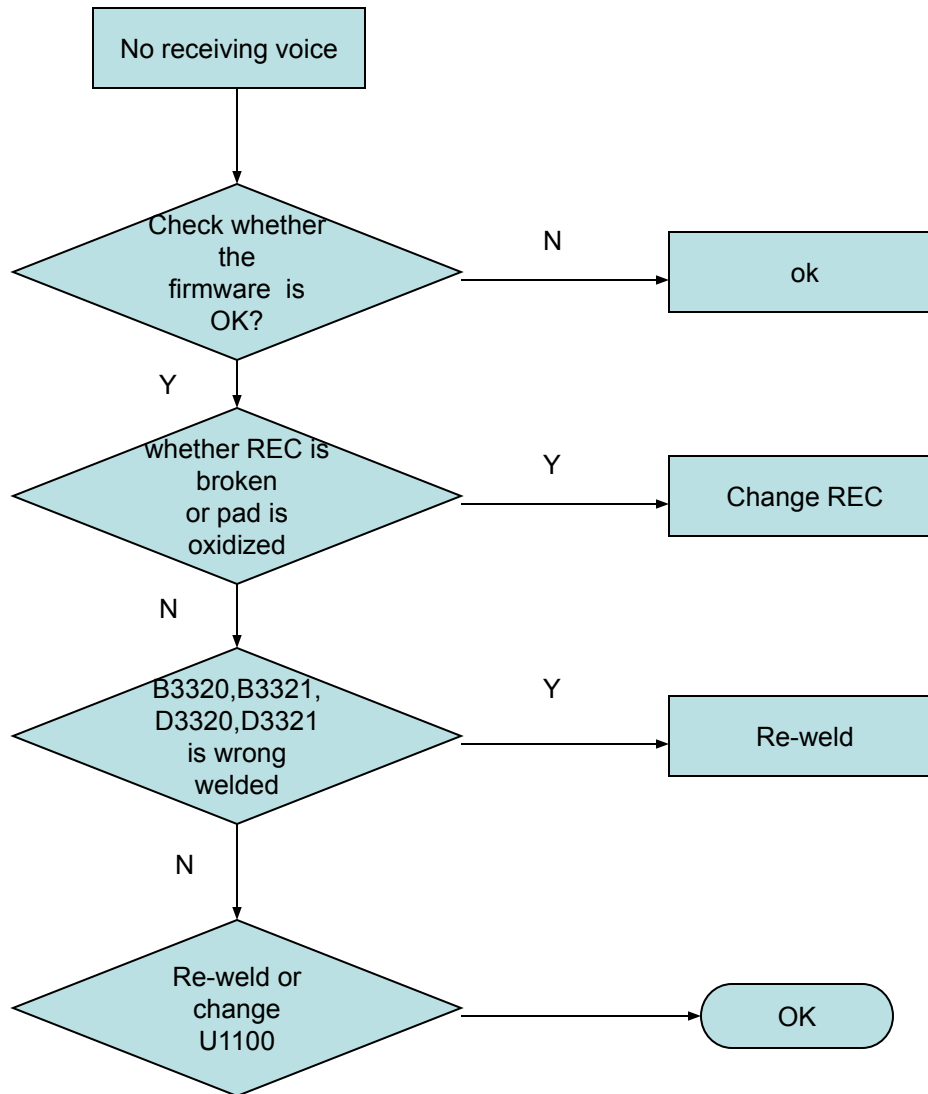




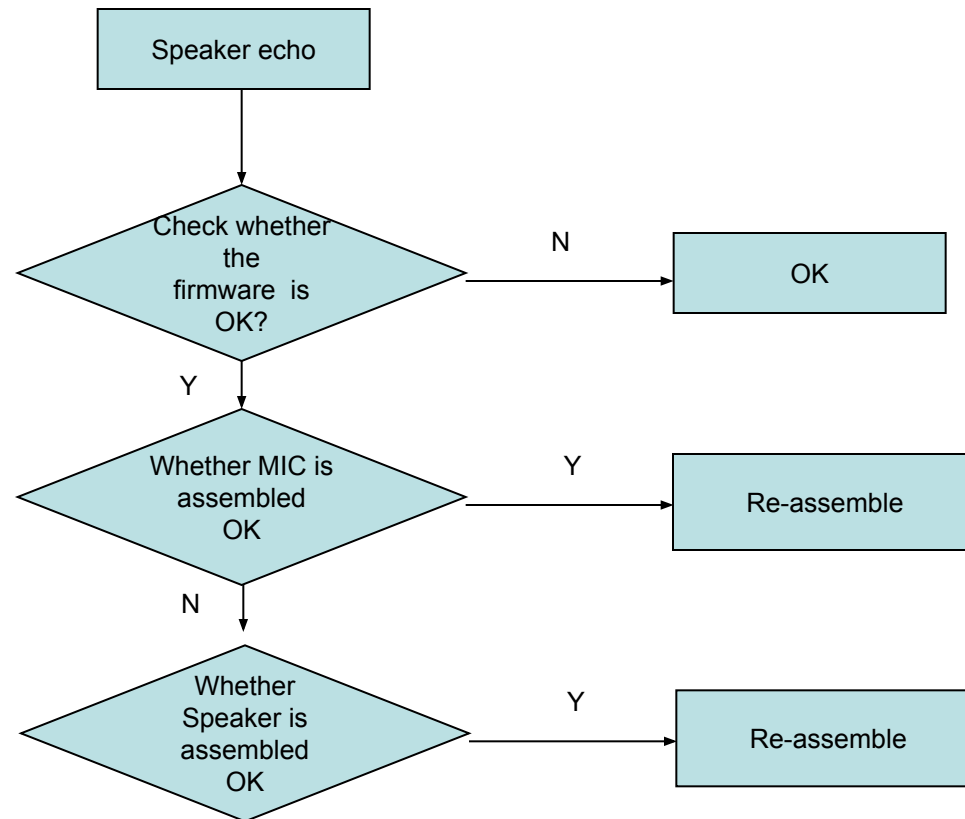
4.3.1 No ring



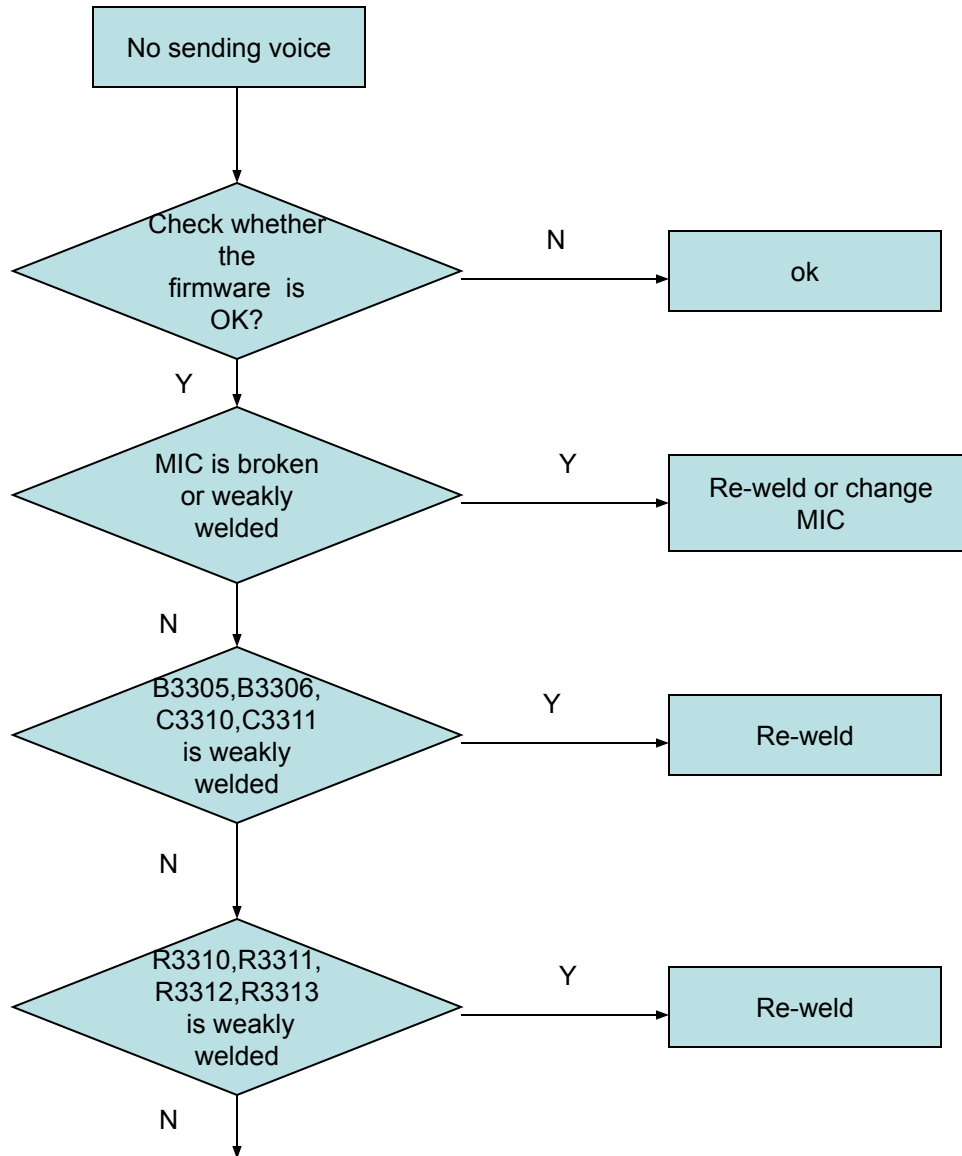
4.3.2 No receiving voice

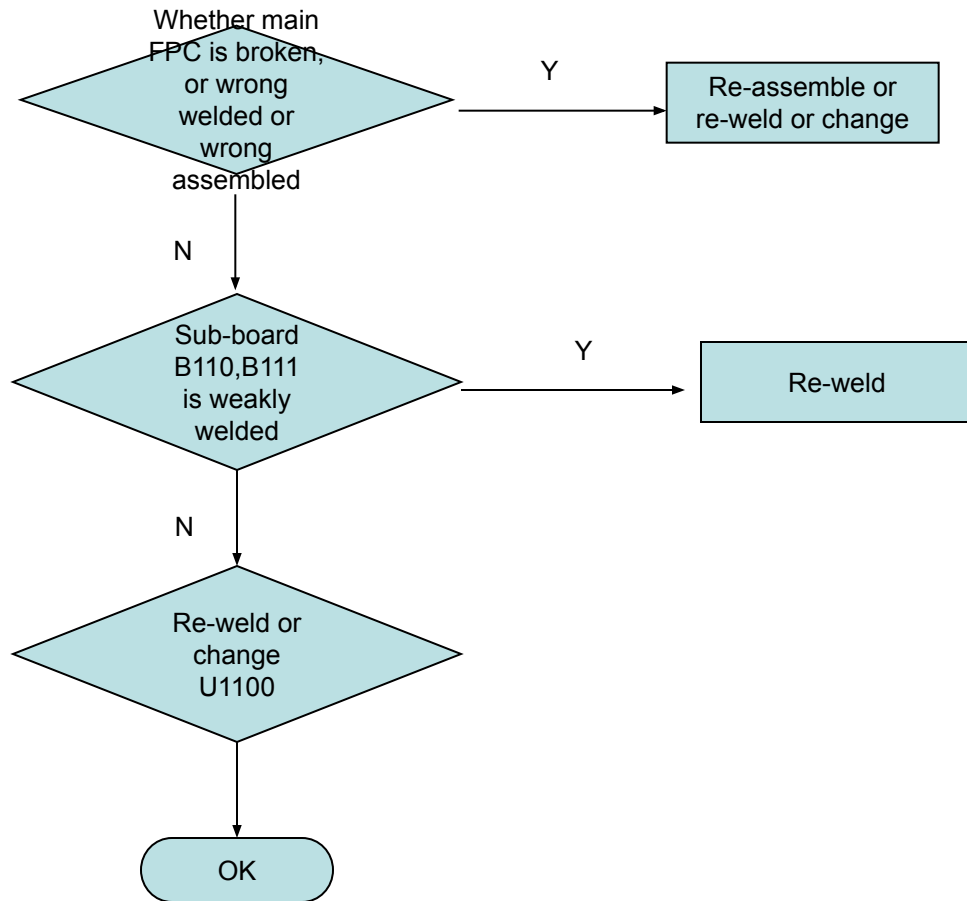


4.3.3 Speaker echo

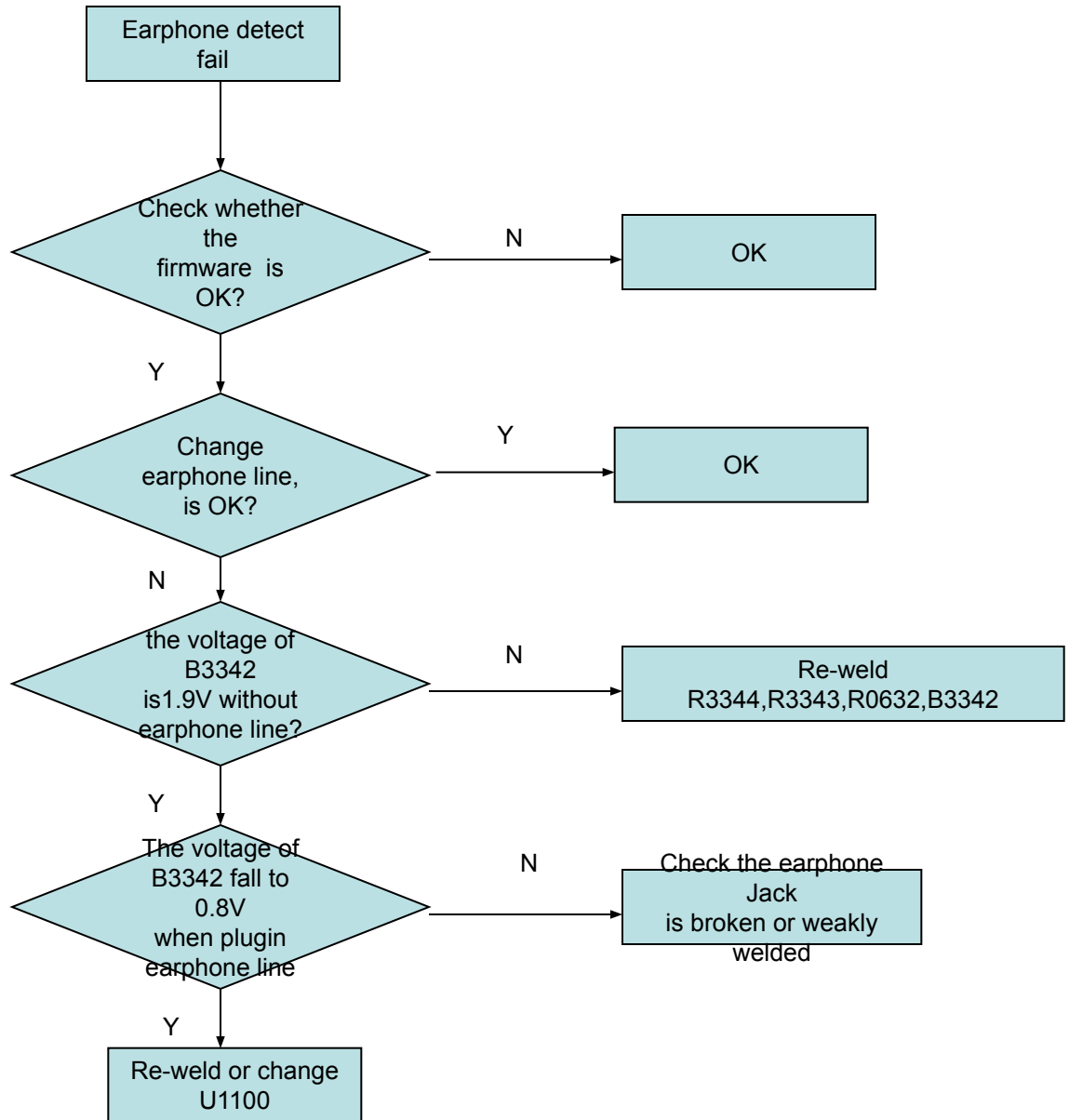


4.3.4 No sending voice

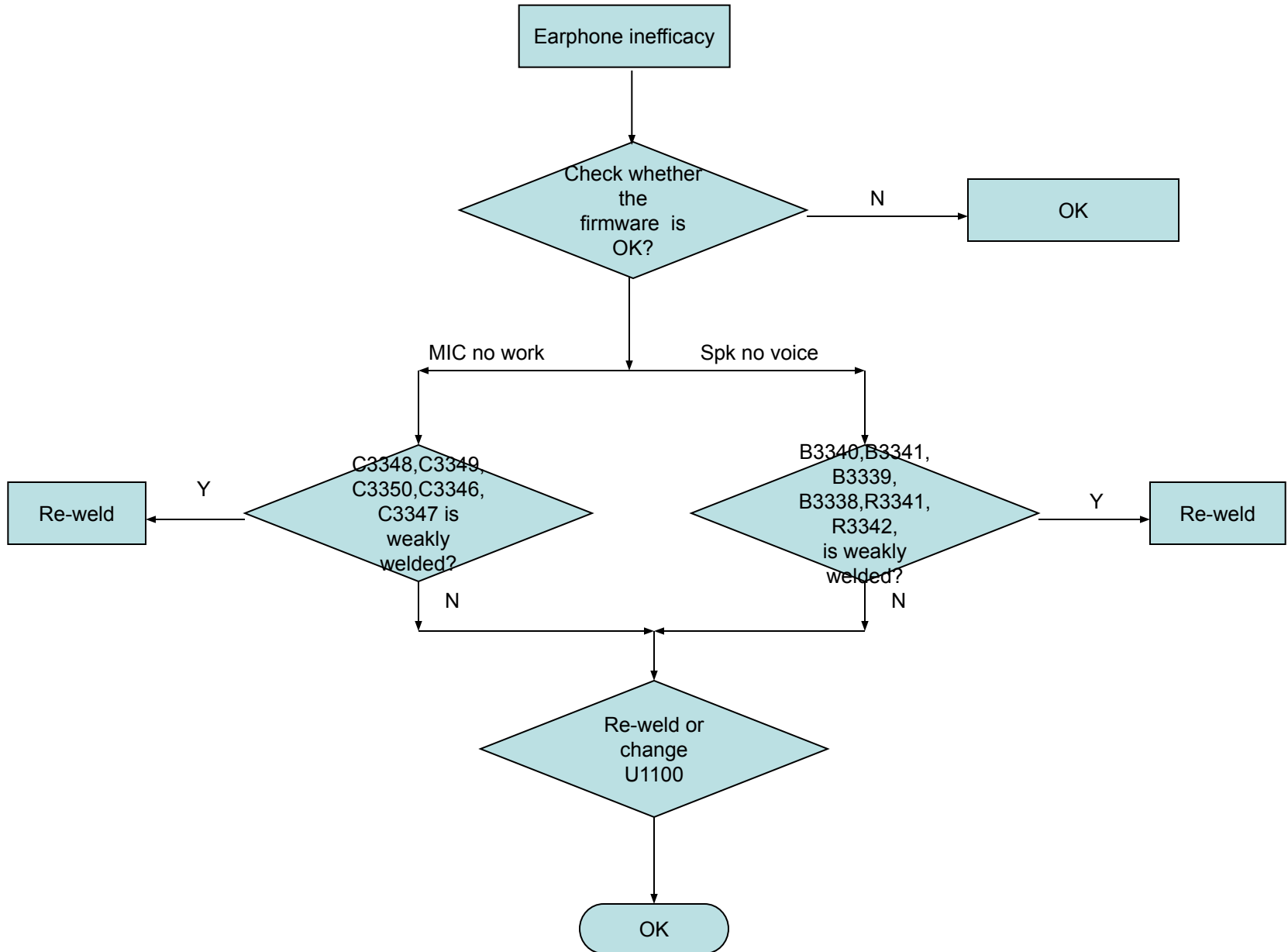




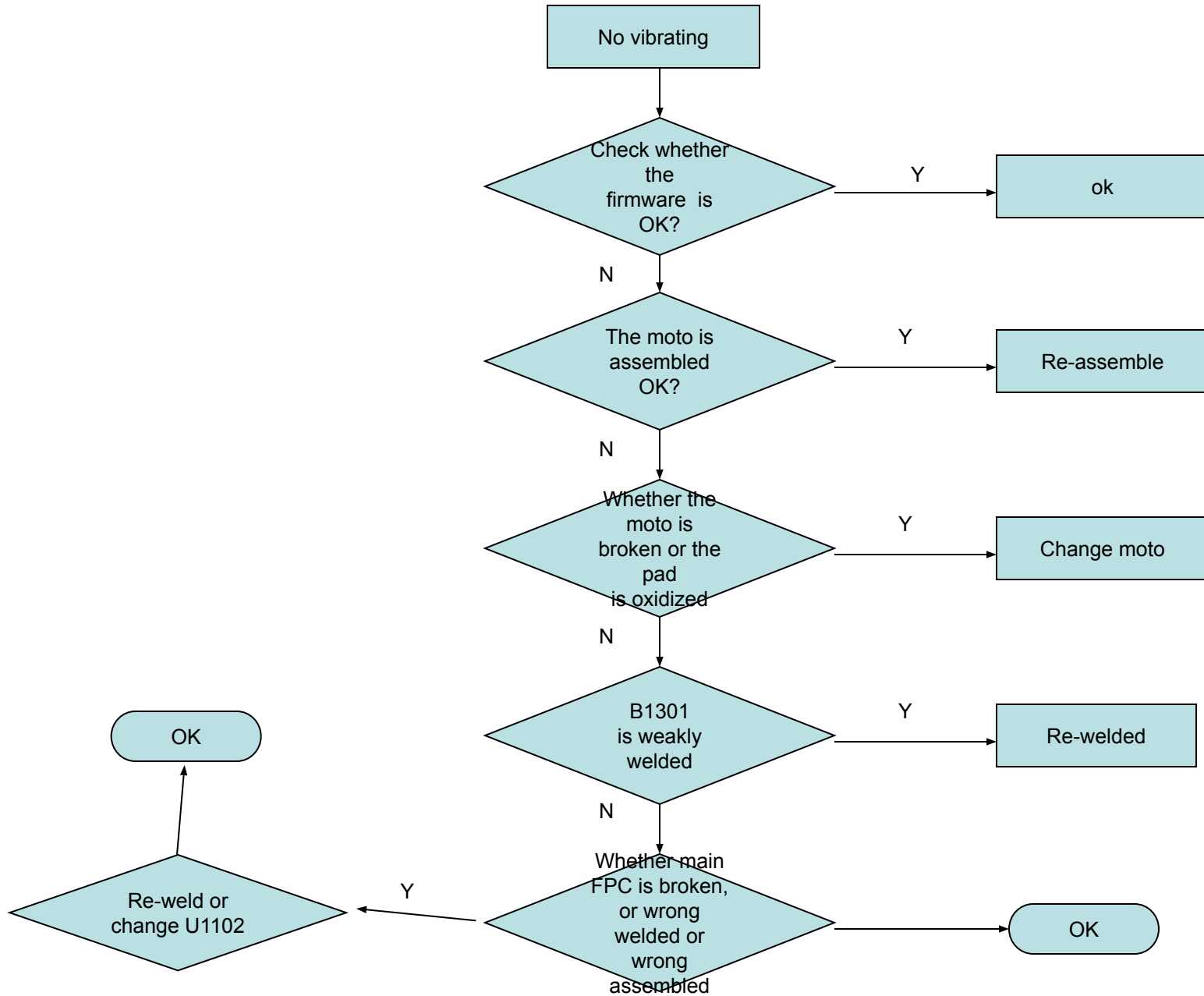
4.3.5 Earphone detect fail



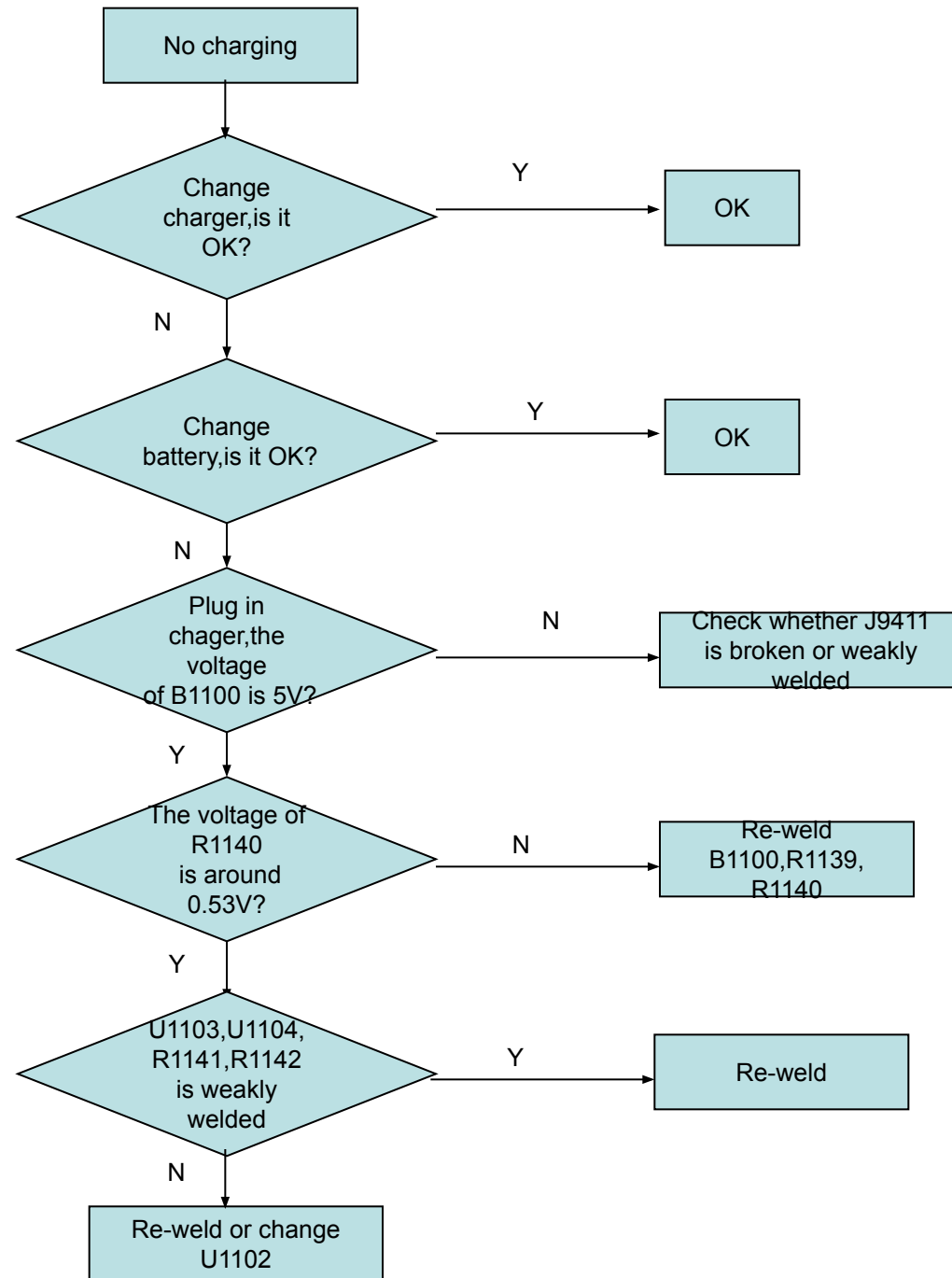
4.3.6 Earphone inefficacy



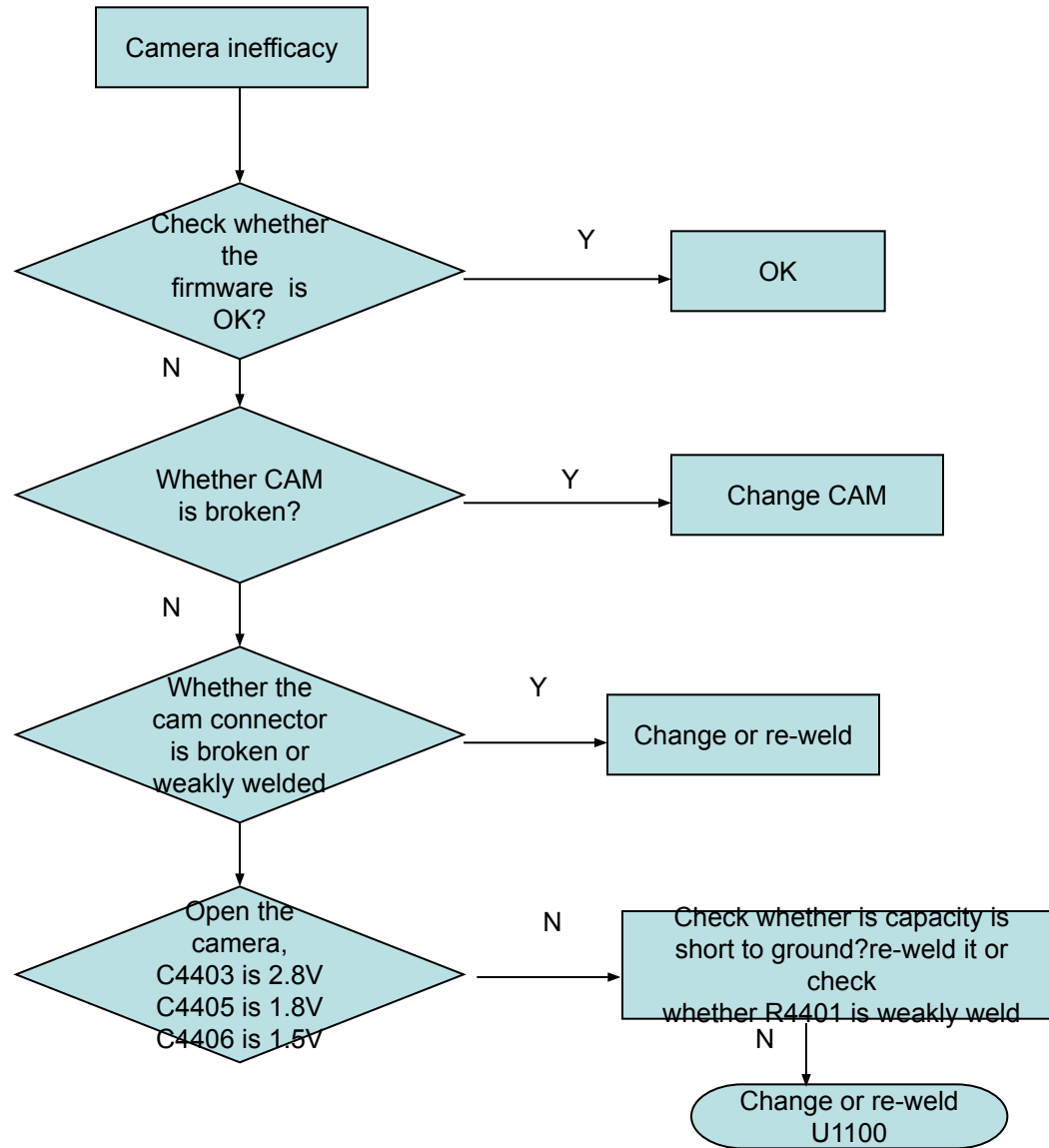
4.4 No vibrating

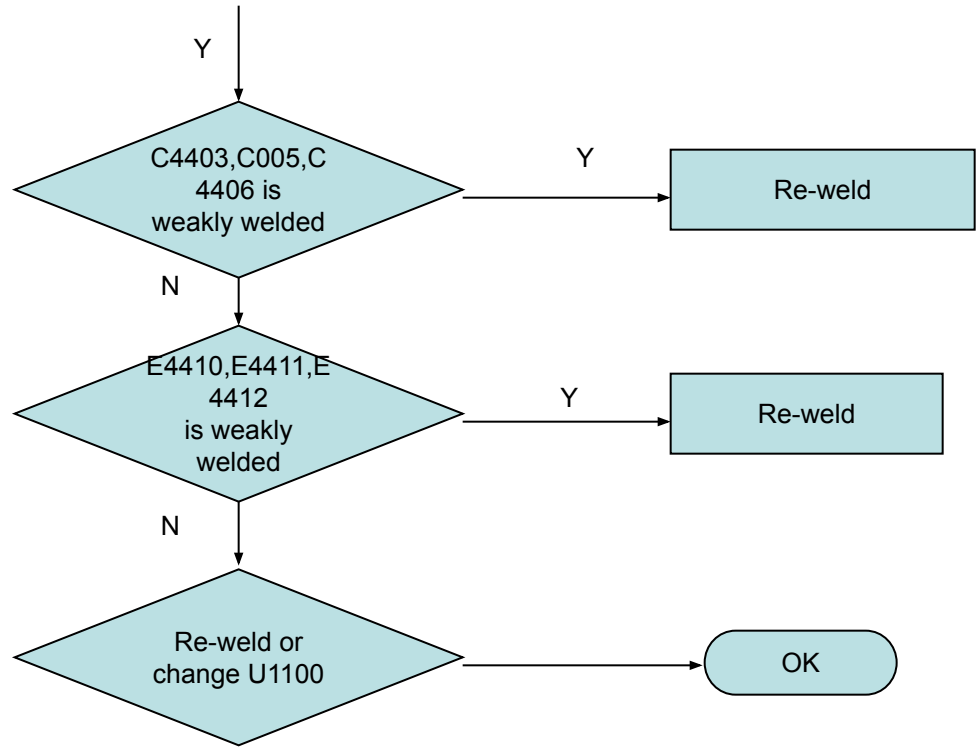


4.5 No charging

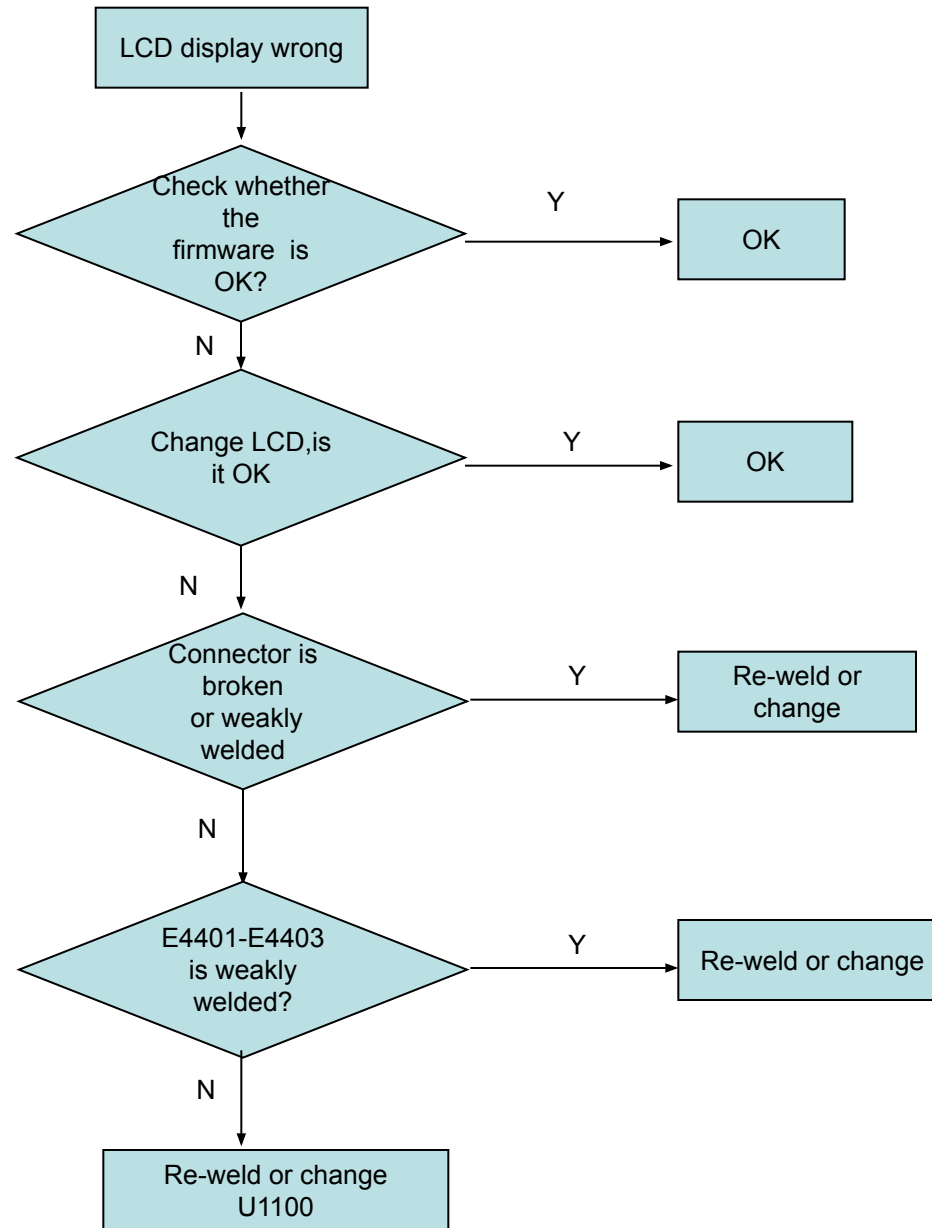


4.6 Camera inefficacy

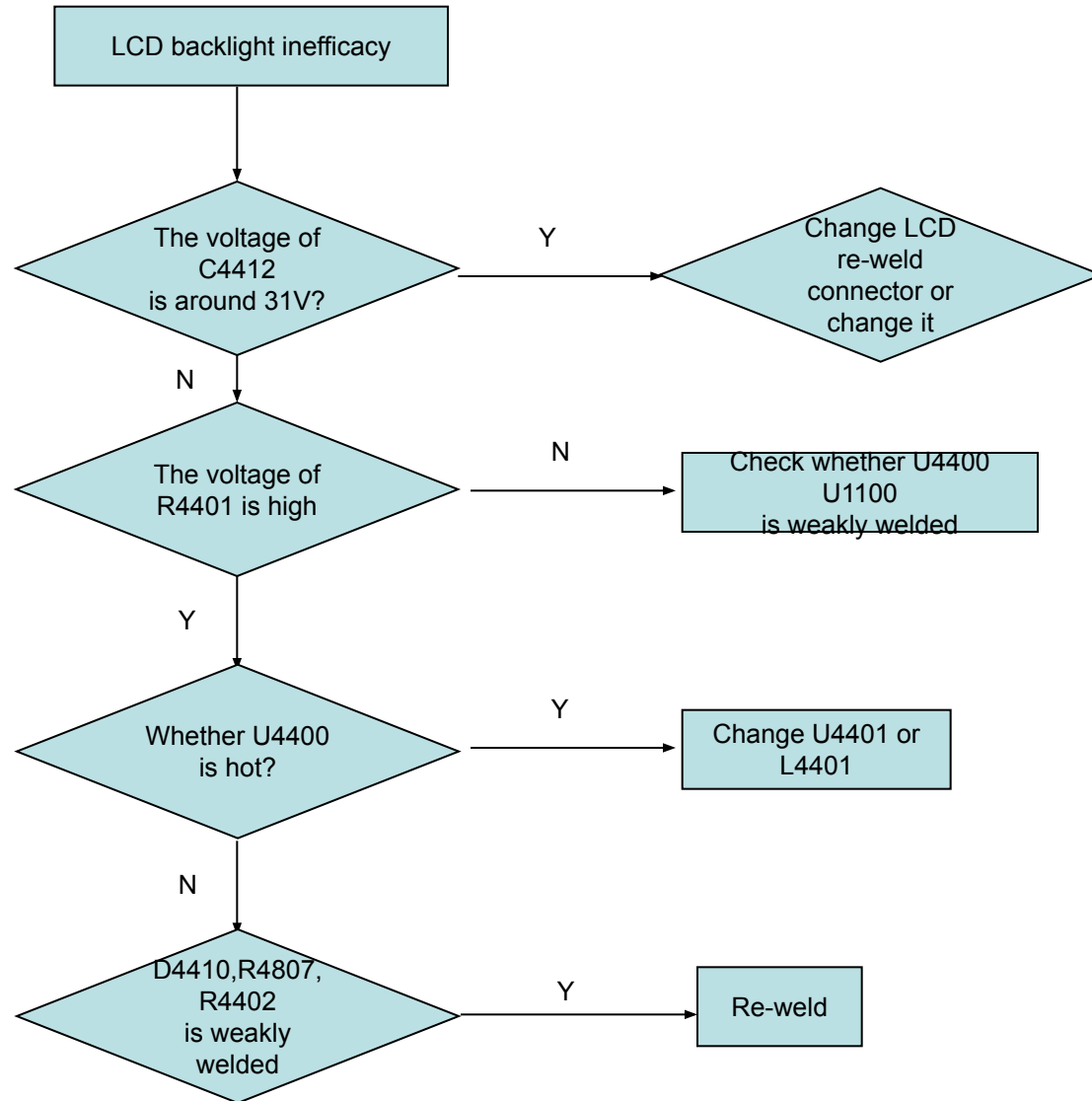




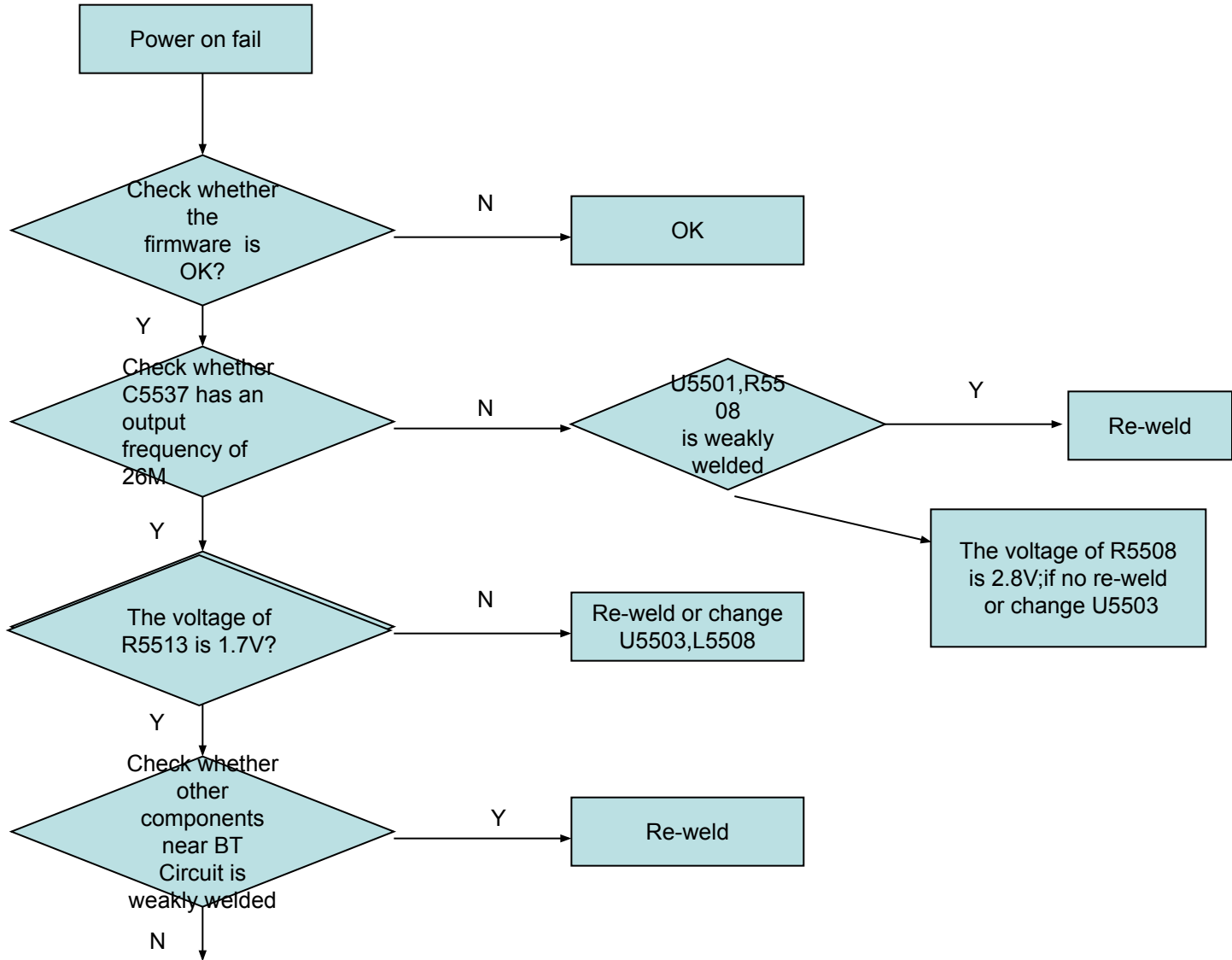
4.7.1 LCD display wrong

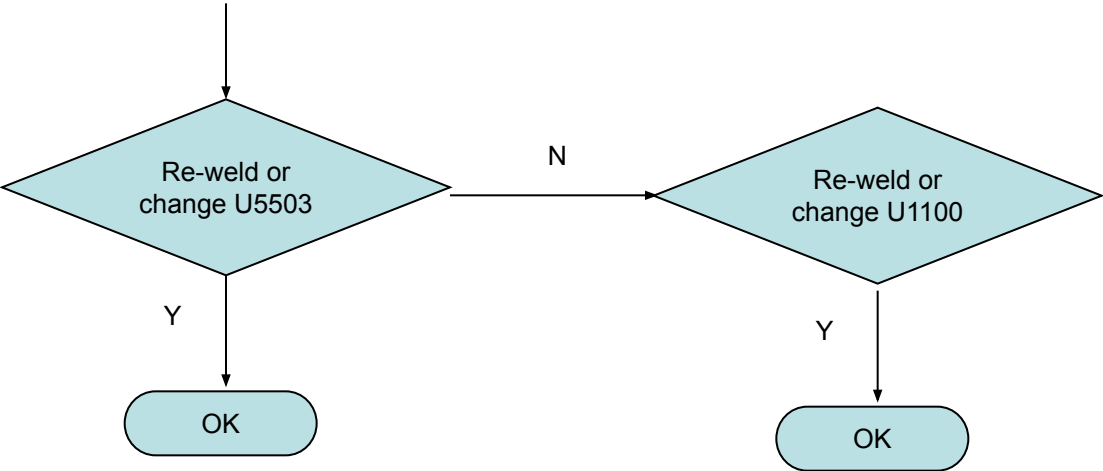


4.7.2 LCD backlight inefficacy

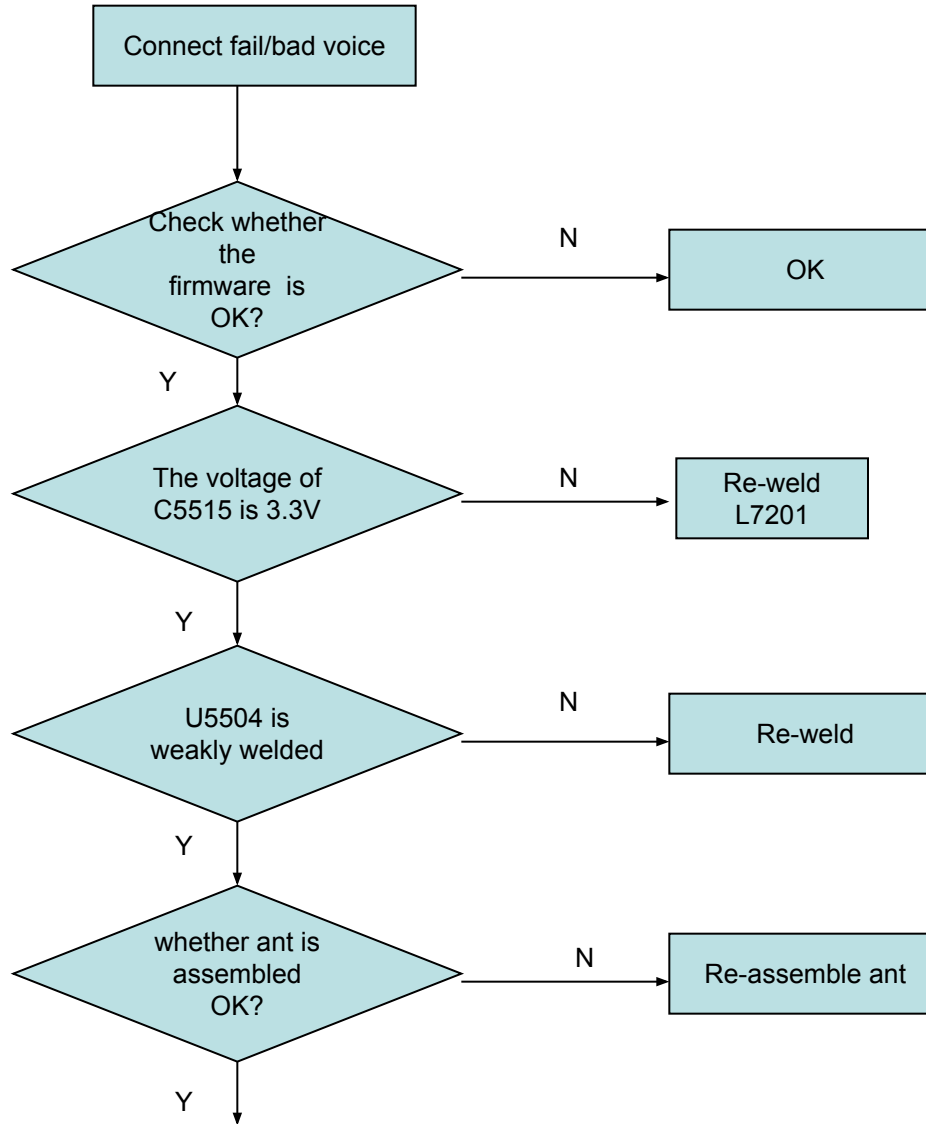


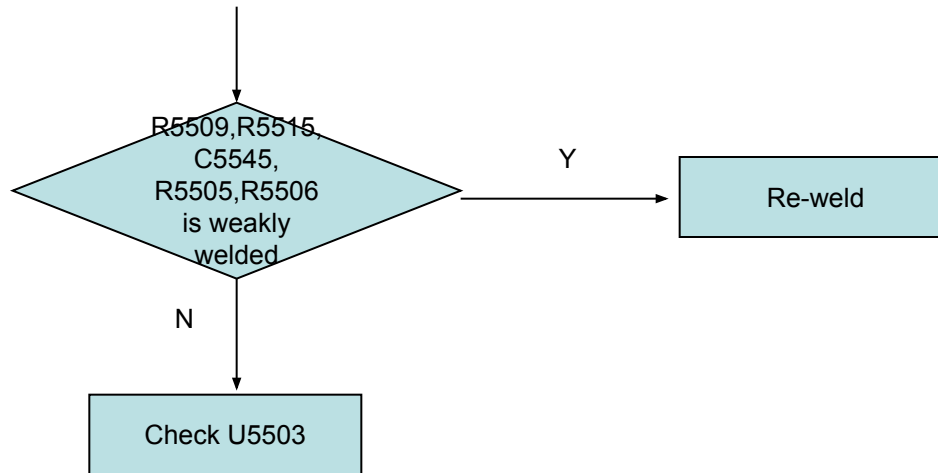
4.8.1 Power on fail



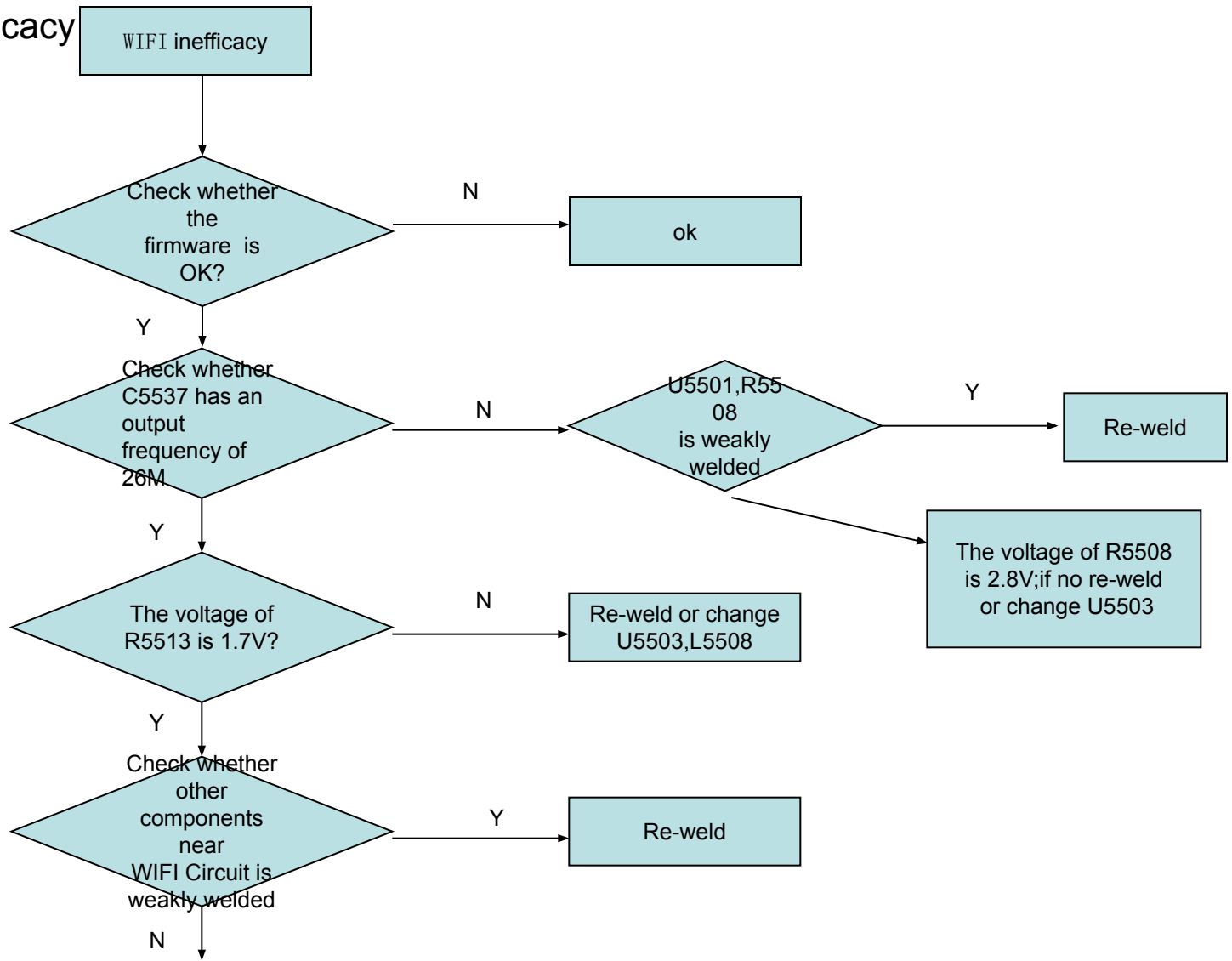


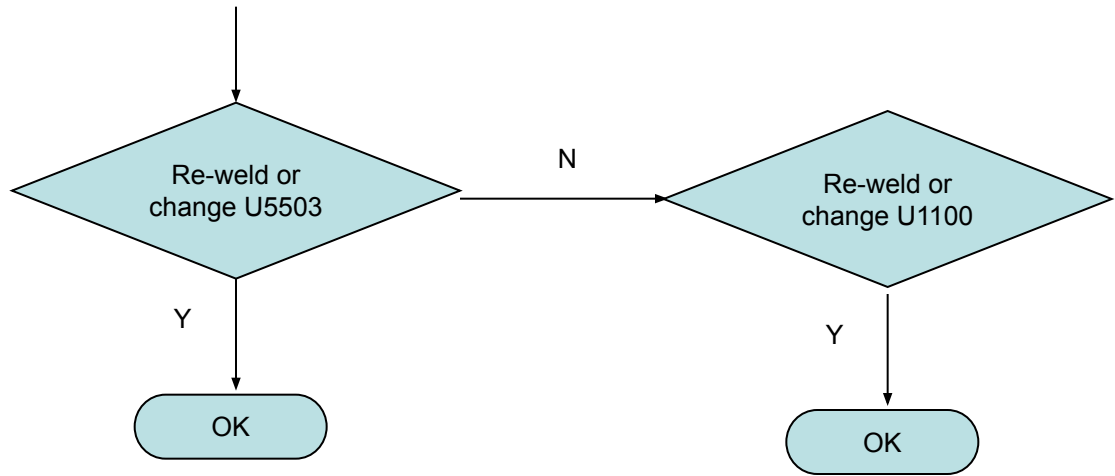
4.8.2 Connect fail/bad voice



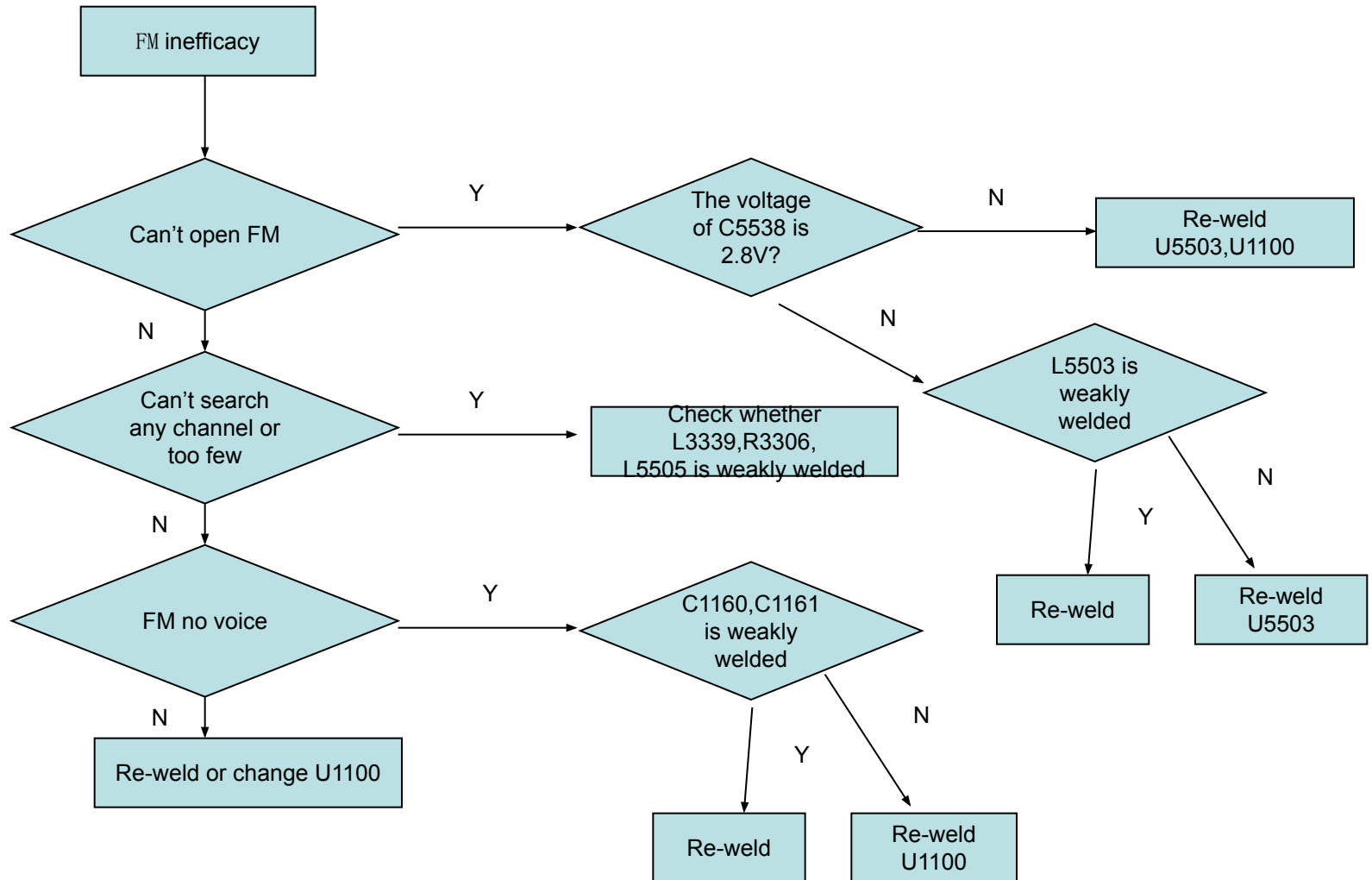


4.9 WIFI Inefficacy

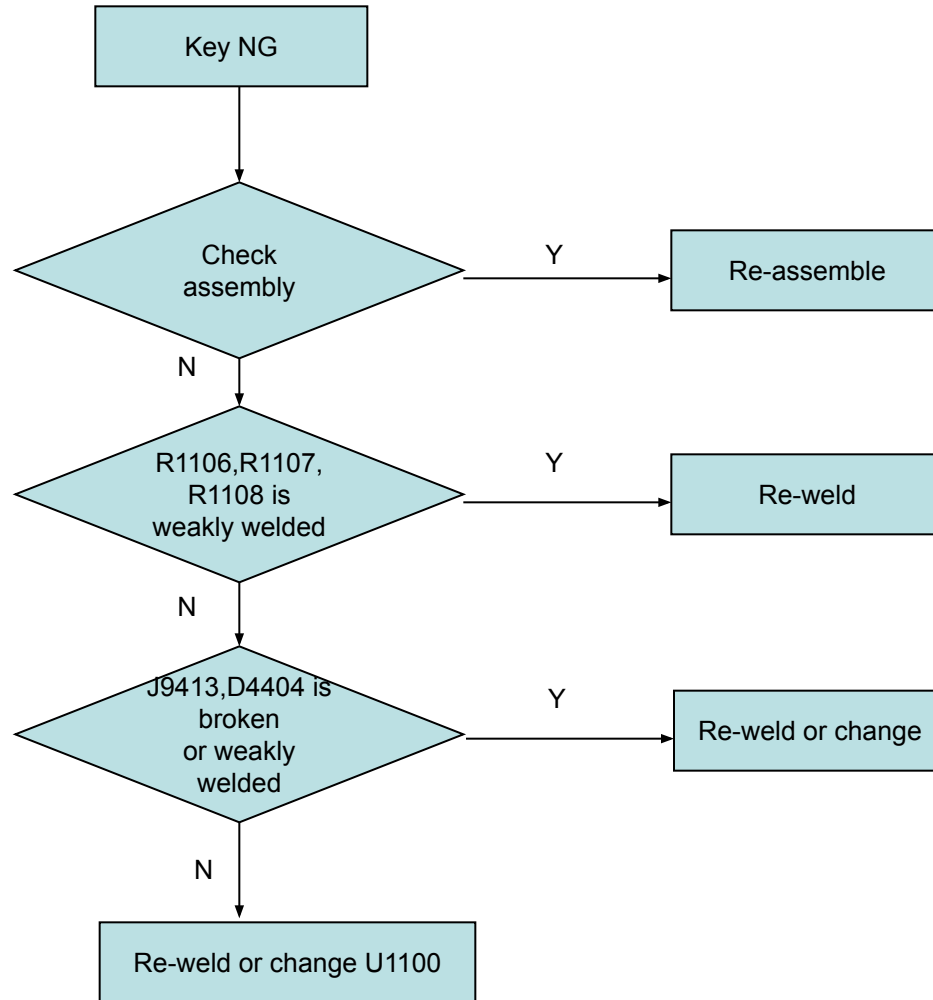




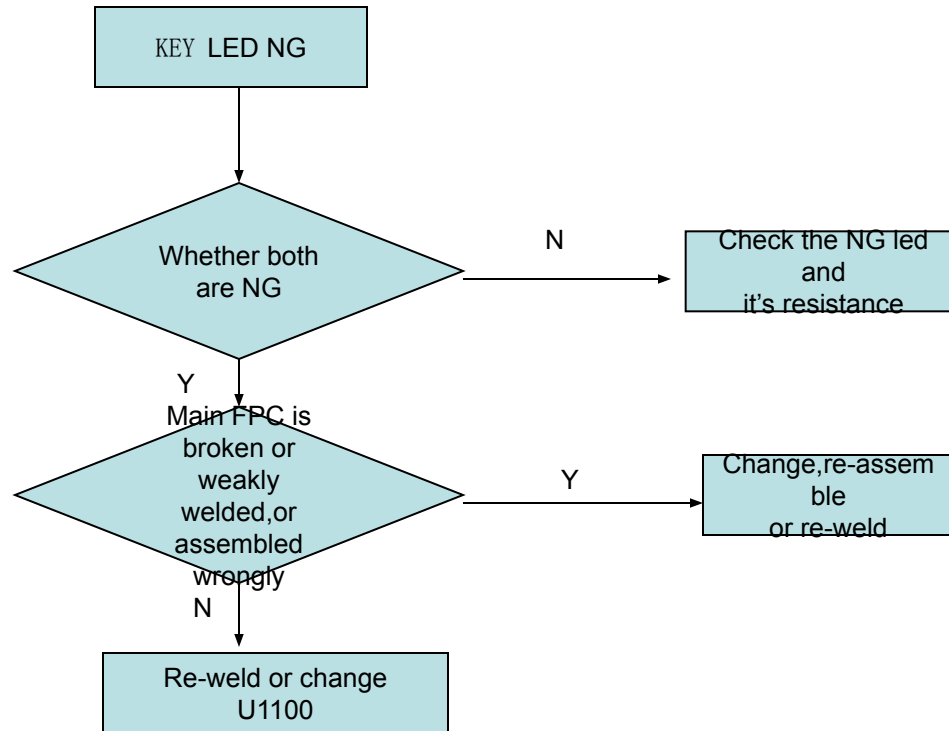
4.10 FM inefficacy



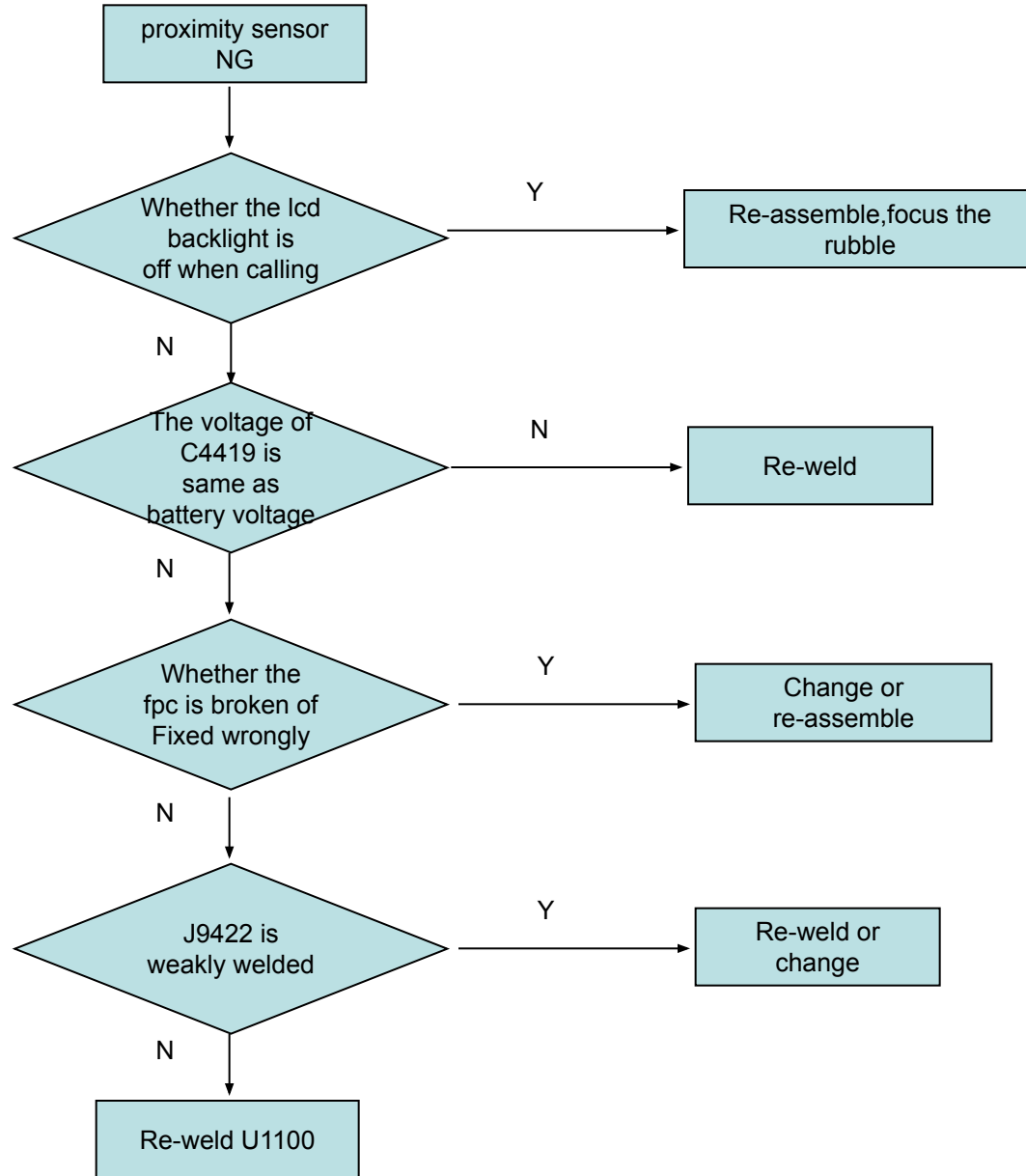
4.11 Key NG



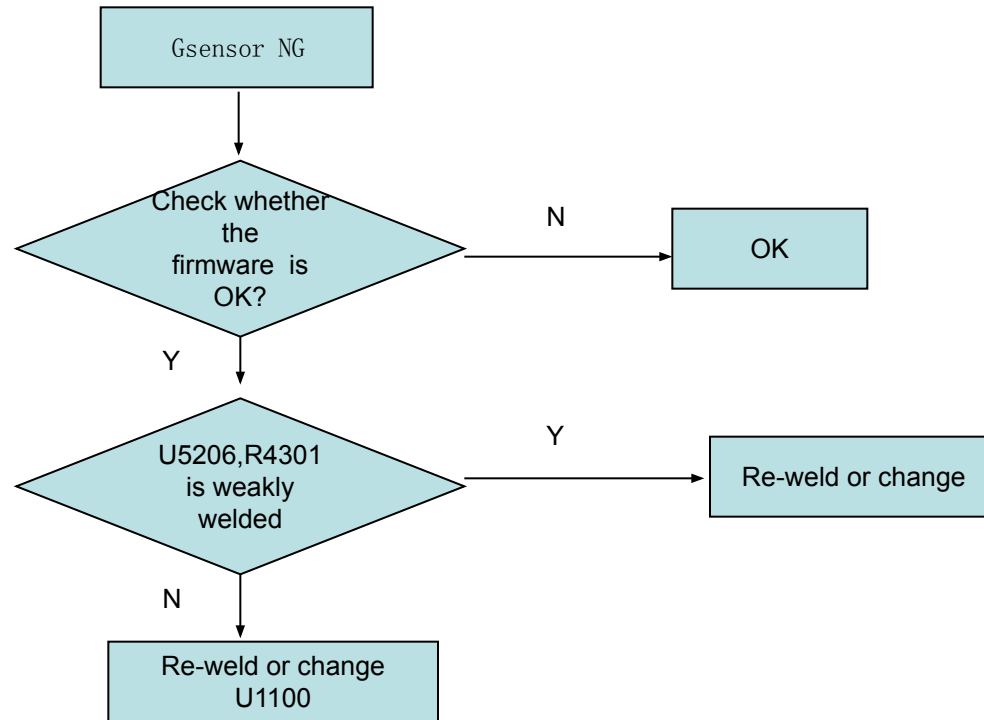
4.12 KEY LED NG



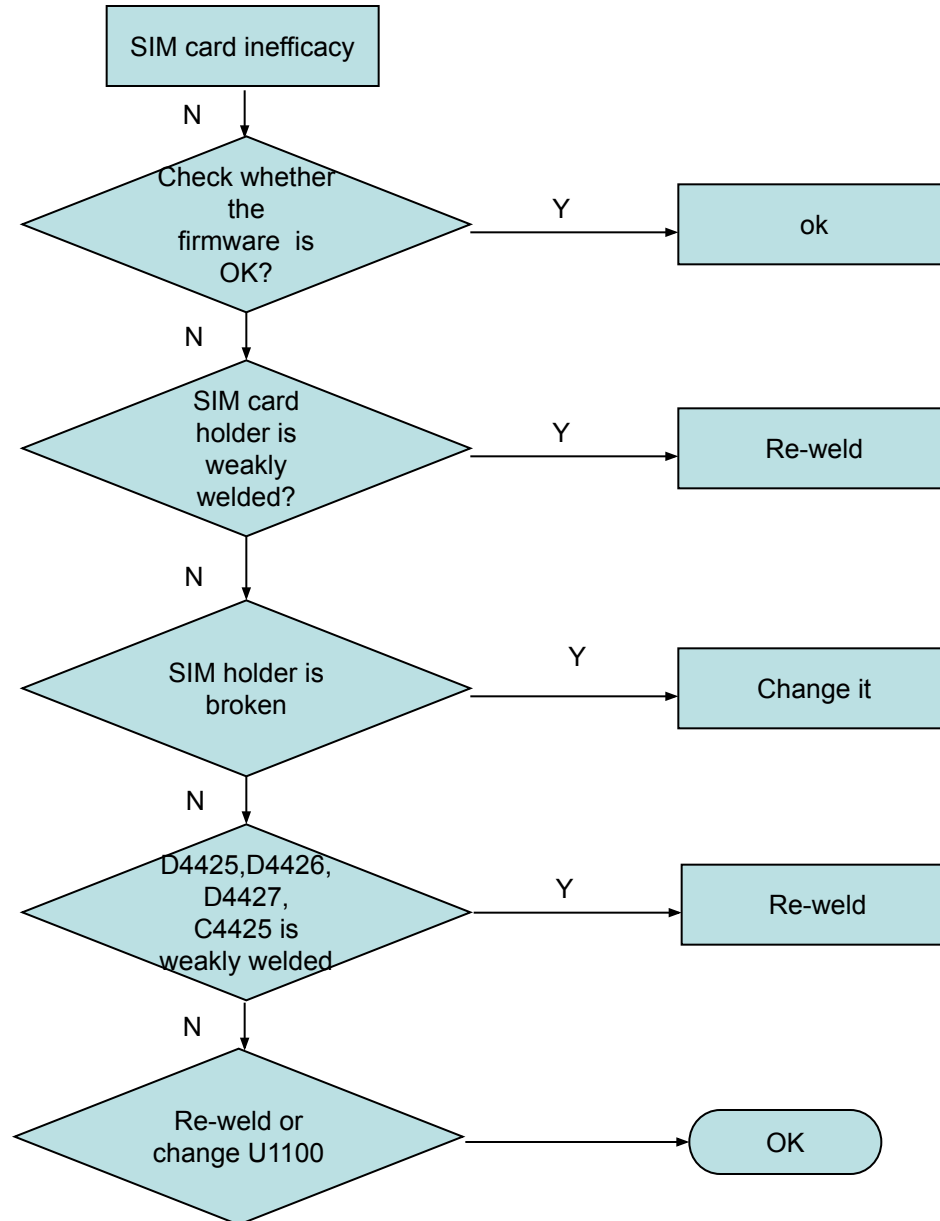
4.13.1 Proximity sensor NG



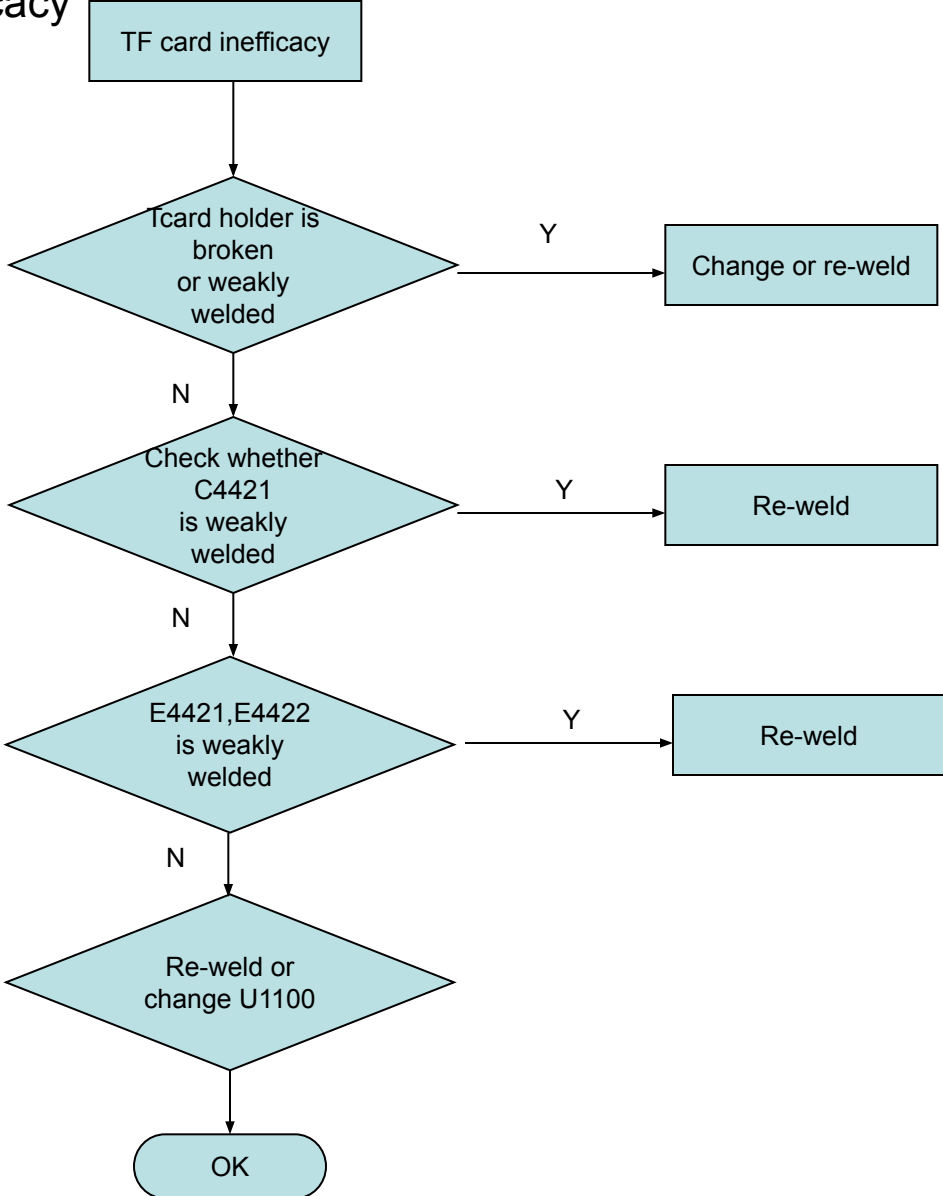
4.13.2 Gsensor NG



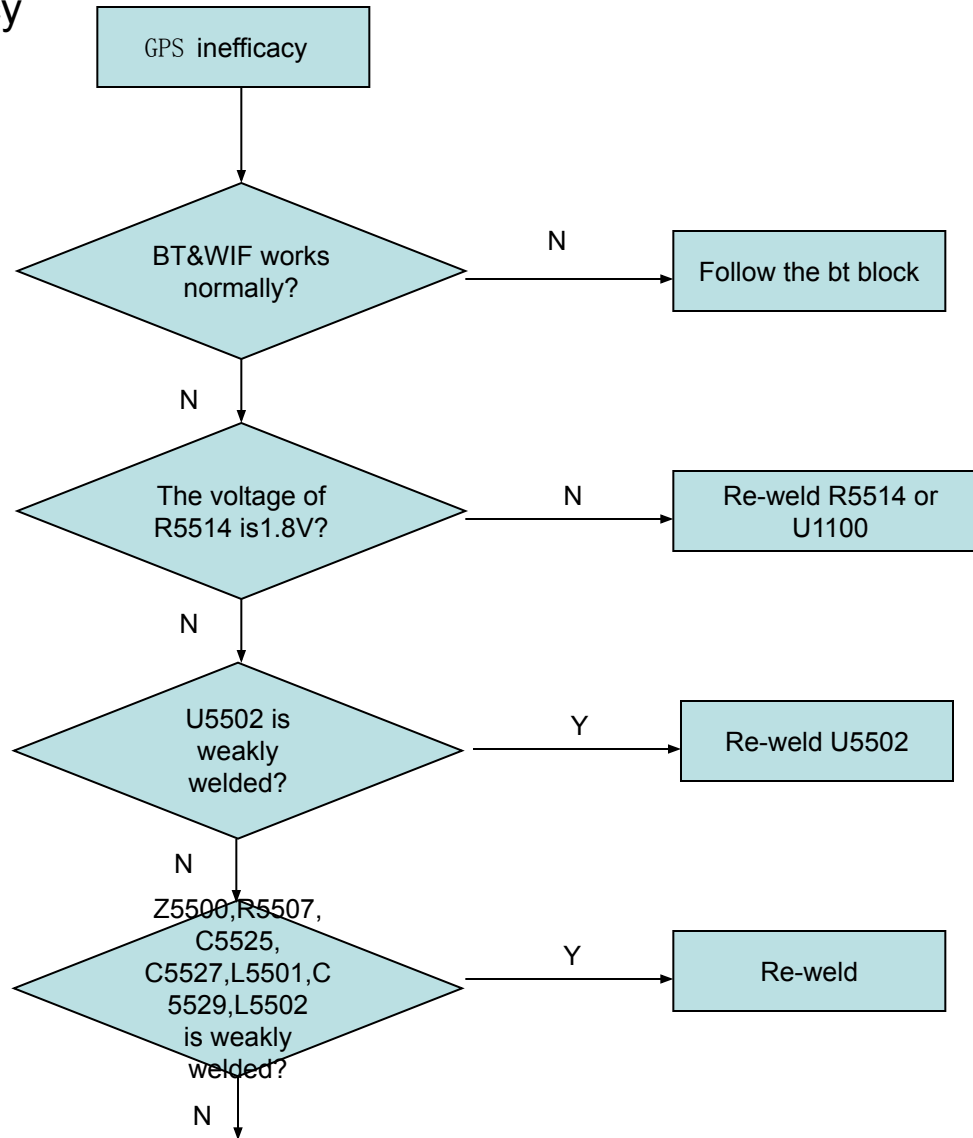
4.14 SIM card inefficacy



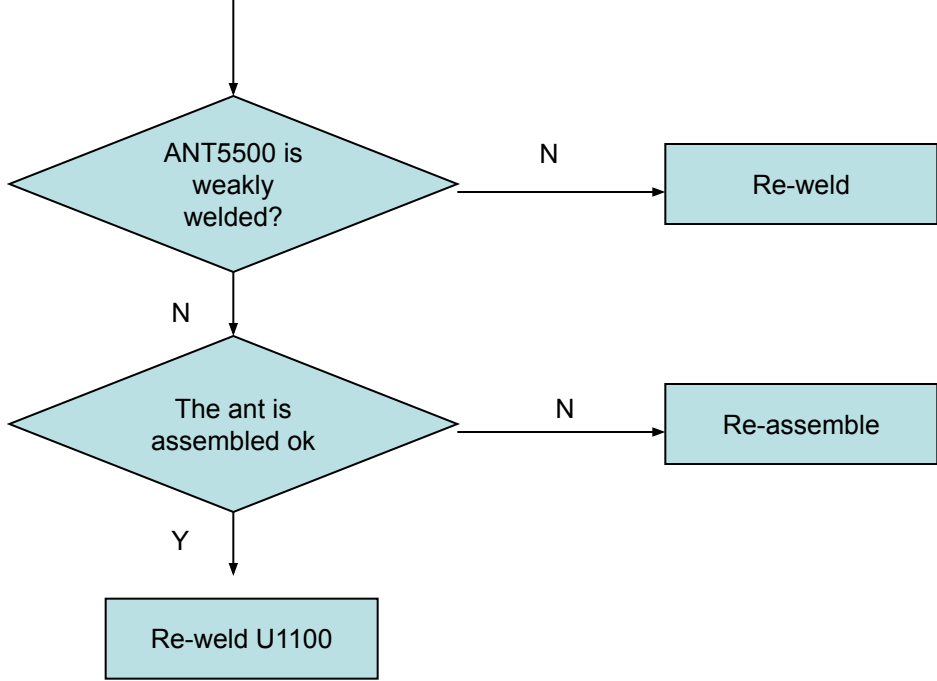
4.15 TF card inefficacy



4.16 GPS inefficacy



4.16 GPS inefficacy



4.17 TP inefficacy

