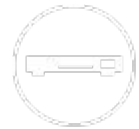


SN Writer v2.1052.0 Set Clean Boot SOP



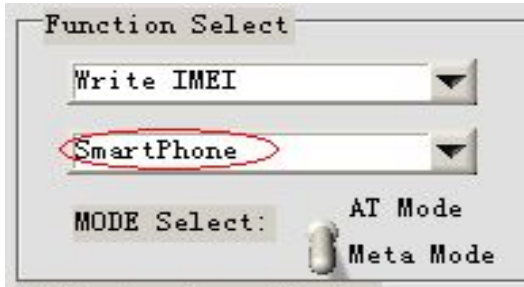
Pre-conditions

- **Set clean boot only can be used with following conditions**
 - Sw load is 1048MP or later (For Yusu)
 - Sn writer is v2.1052.0 or later

Steps to set clean boot

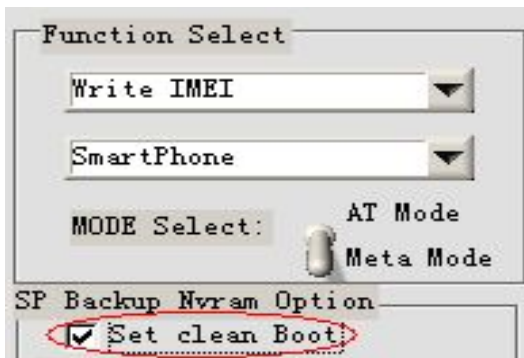
- **Step1:**

- Open Sn Write tool, select Smart phone in “Function Select” item



- **Step2:**

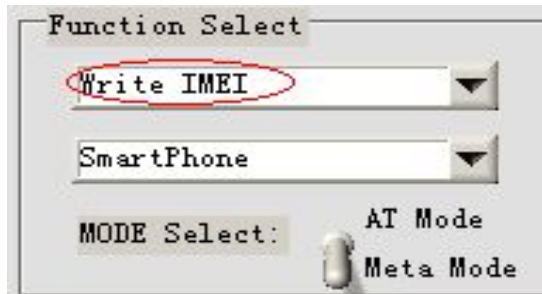
- Select Set clean boot in “SP Backup Nvram Option” which just under “Function Select”



Steps to set clean boot

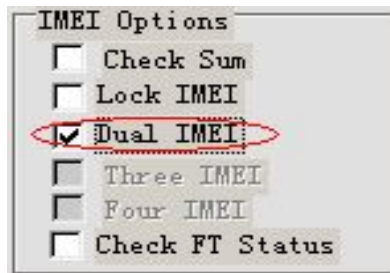
■ Step3:

- Adjust write options, available options for set clean boot are “Write Barcode”, “Write IMEI”, “Write BT Address”, “Write WIFI MAC Address”, “Four In One”, we take “Write IMEI” as a example.



■ Step4:

- You should select “Dual IMEI” option if you want to set clean boot in “Write IMEI”, because SW can’t support Dual IMEI is 1032MP.



Steps to set clean boot

- **Step5:**

- Select Com port and Modem database and AP database

Function Select

Write IMEI

SmartPhone

MODE Select: AT Mode
Meta Mode

Connection Setting

BaudRate: 115200

COM PORT: COM20

PowerON Delay Time(s): 5000

IMEI Options

Check Sum

Lock IMEI

Dual IMEI

Three IMEI

Four IMEI

Check FT Status

SP Backup Nvram Option

Set clean Boot

MAC Addr Option

SP NVRAM To File Enable MAC Header

NVRAM Database File

Modem Database

d:\customer\ds269_48mp\BPLGUIInfoCustomApp_MT6516_S01_MAUI_10A_W10_4E

Modem Database

AP Database

d:\customer\MTK\20101116-1_zte73v1\APDB_MT6573_S01_MAIN2.1_W10.24

AP Database

- **Step6:**

- Click “start” button

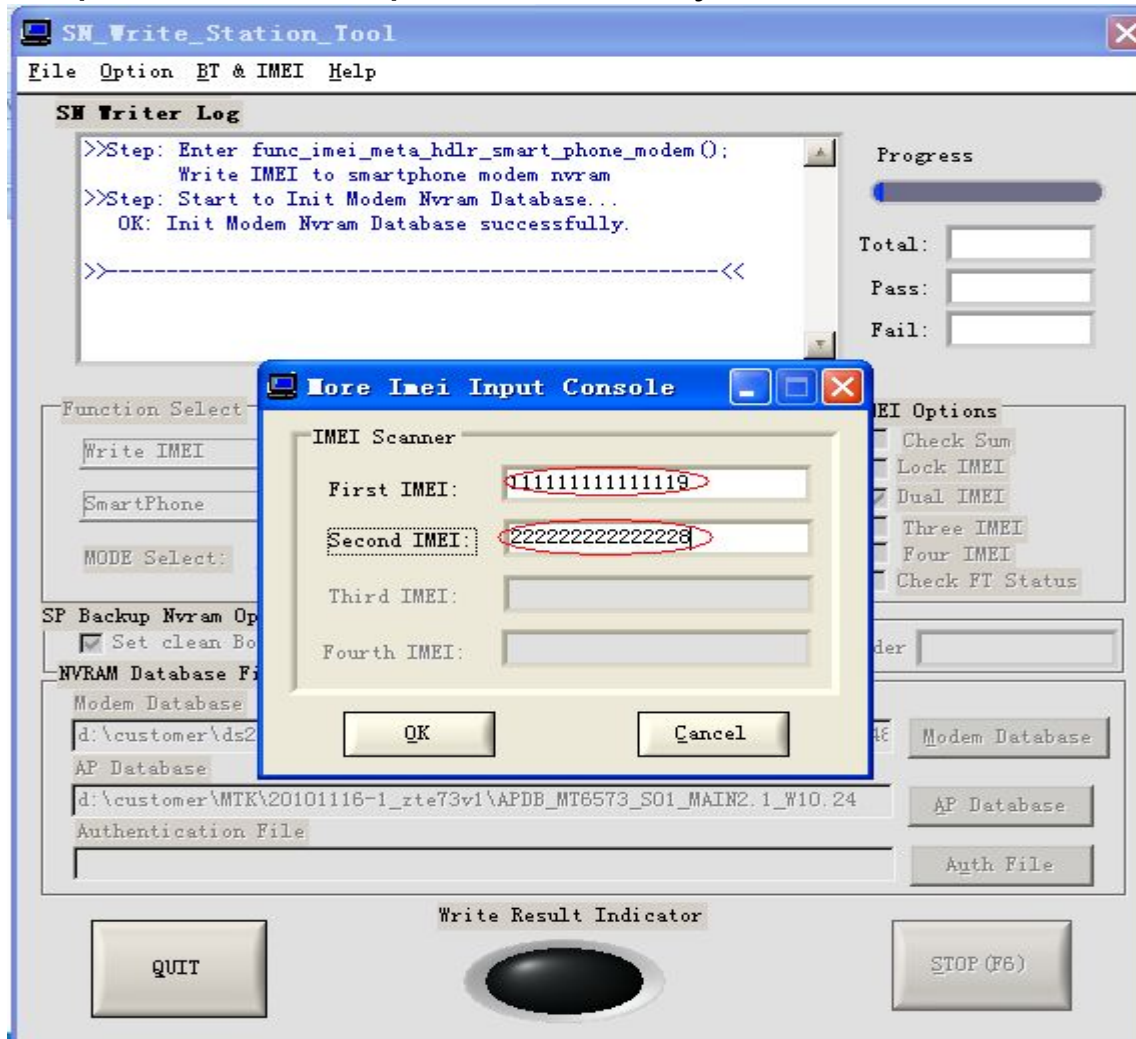
Write Result Indicator

QUIT

START (F6)

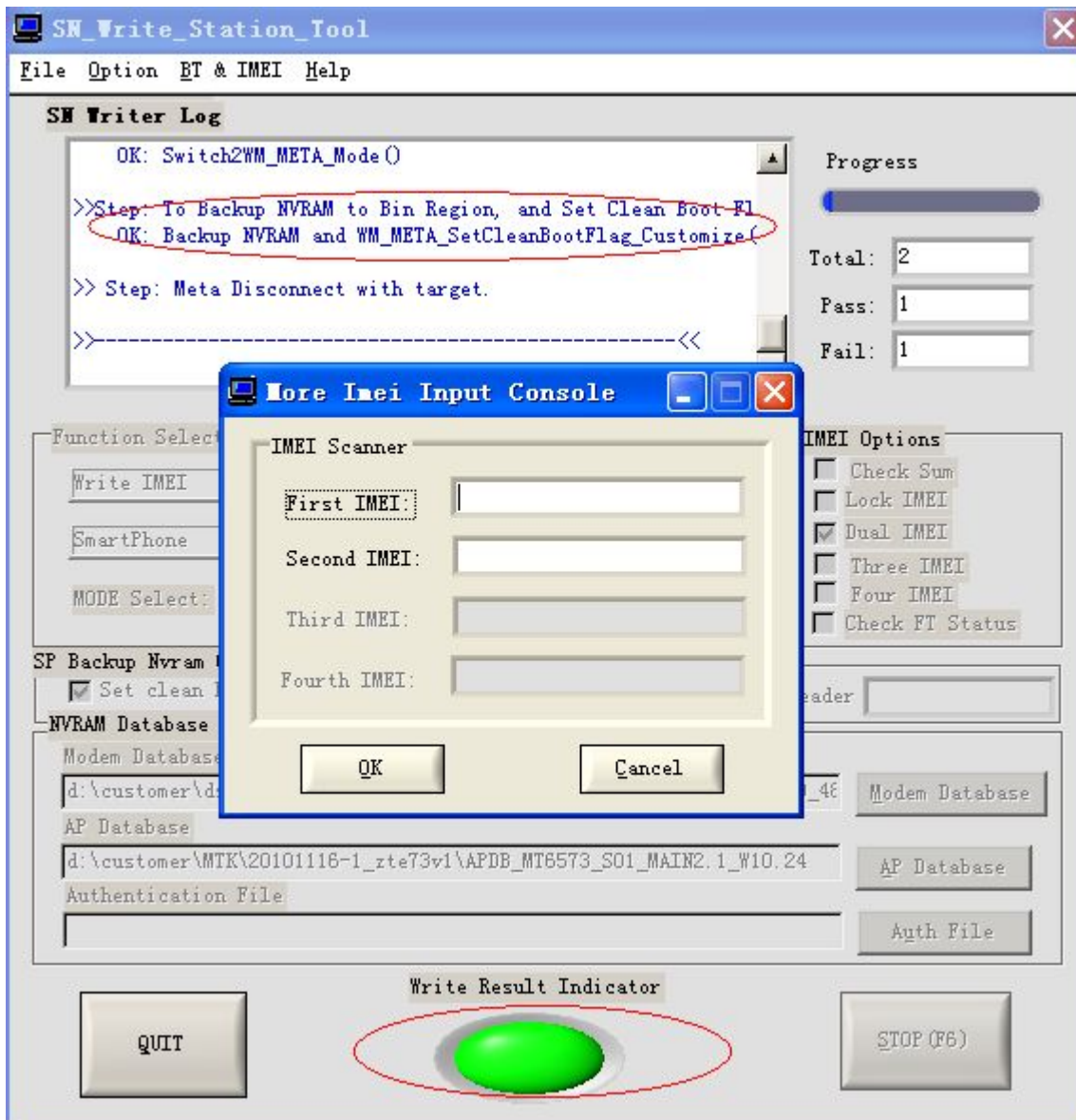
Steps to set clean boot

- Step7
 - Input IMEI, then press enter key or click "OK" button in input console.



Steps to set clean boot

- **Step8:**
 - Power on your phone to enter META mode do the required operations
- **Step9:**
 - When write log shows backup ok and “write Result Indicator” turns green means Write IMEI and set clean boot OK. IMEI input console will pop up allows you do same operation in next phone. See next page for detail information.



Thanks

