

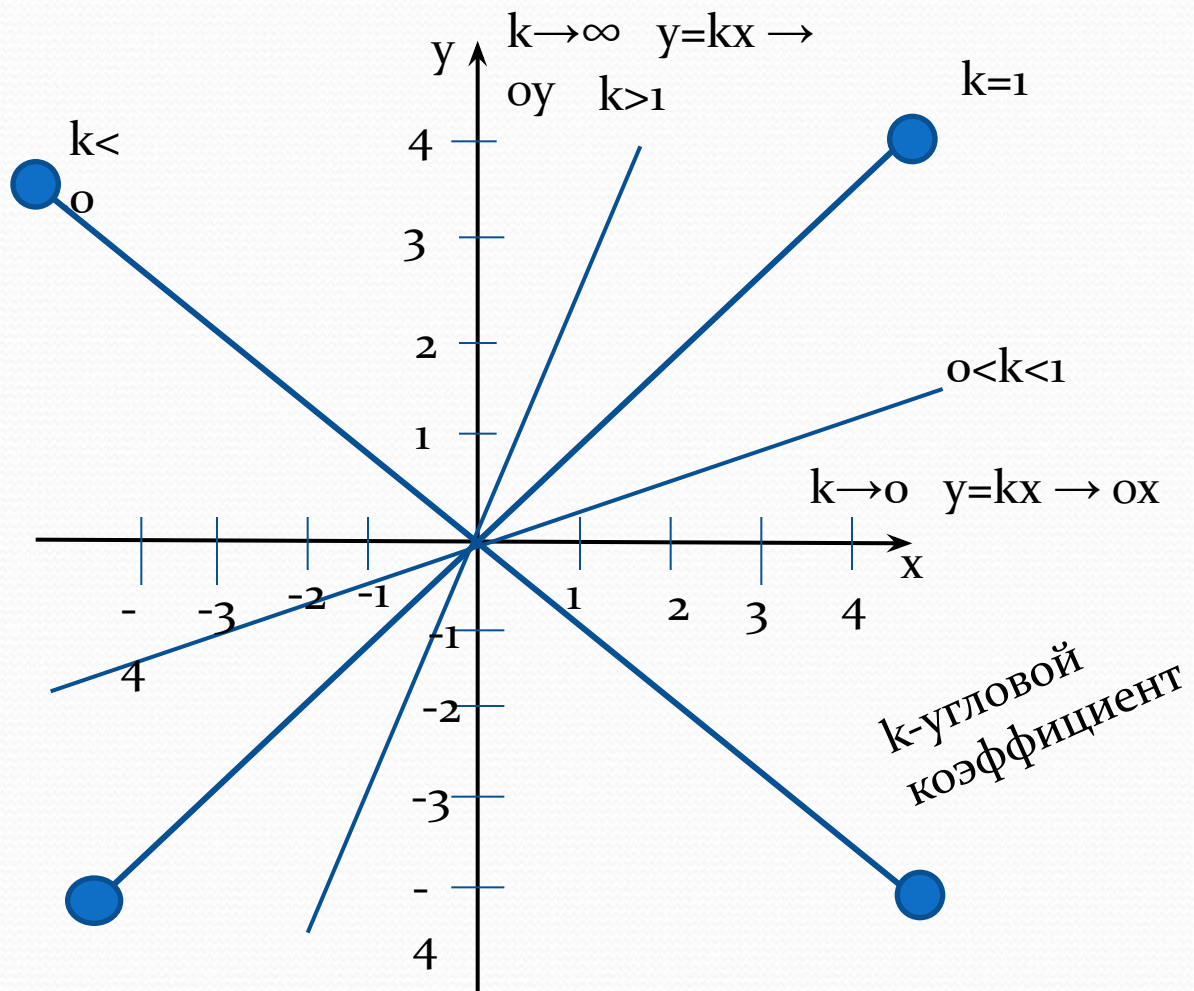
Прямая пропорциональная зависимость

Прямая пропорциональная зависимость

$$y=kx$$

$$k \neq 0$$

0

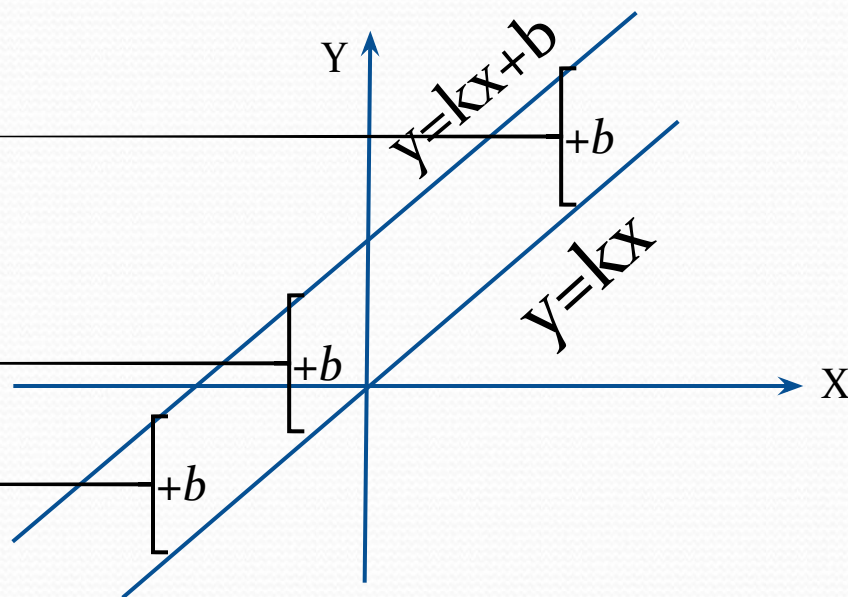


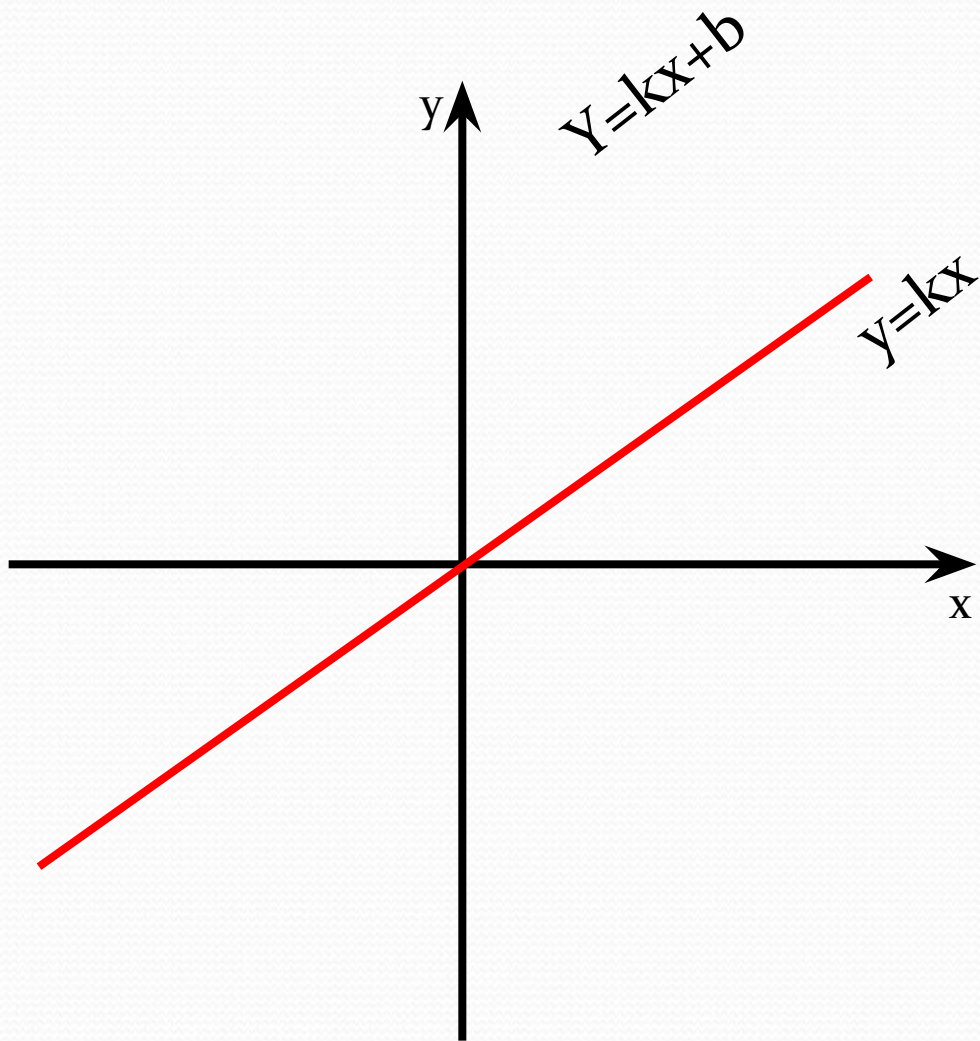
Линейная функция

ЛОВИ ОШИБКУ!!!

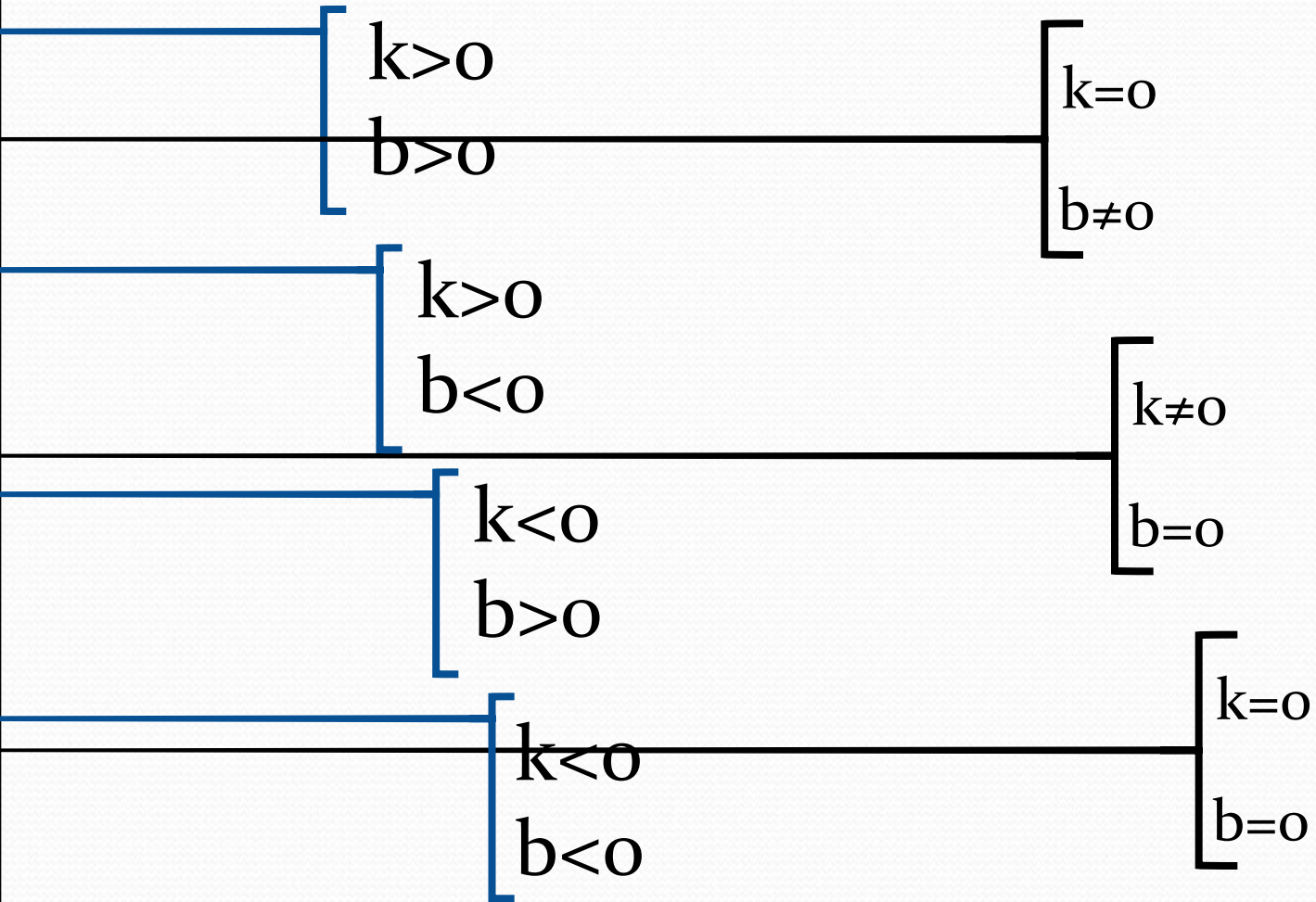
ЛИНЕЙНАЯ ФУНКЦИЯ

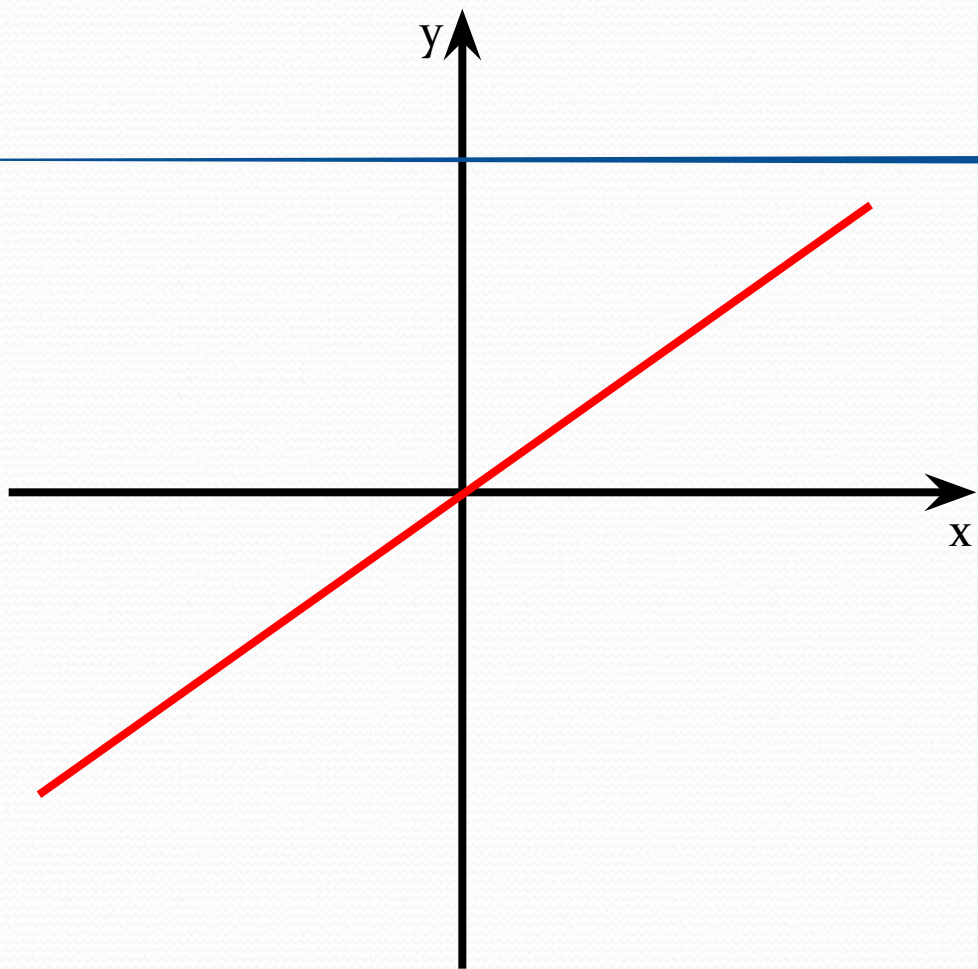
$$y=kx+b$$



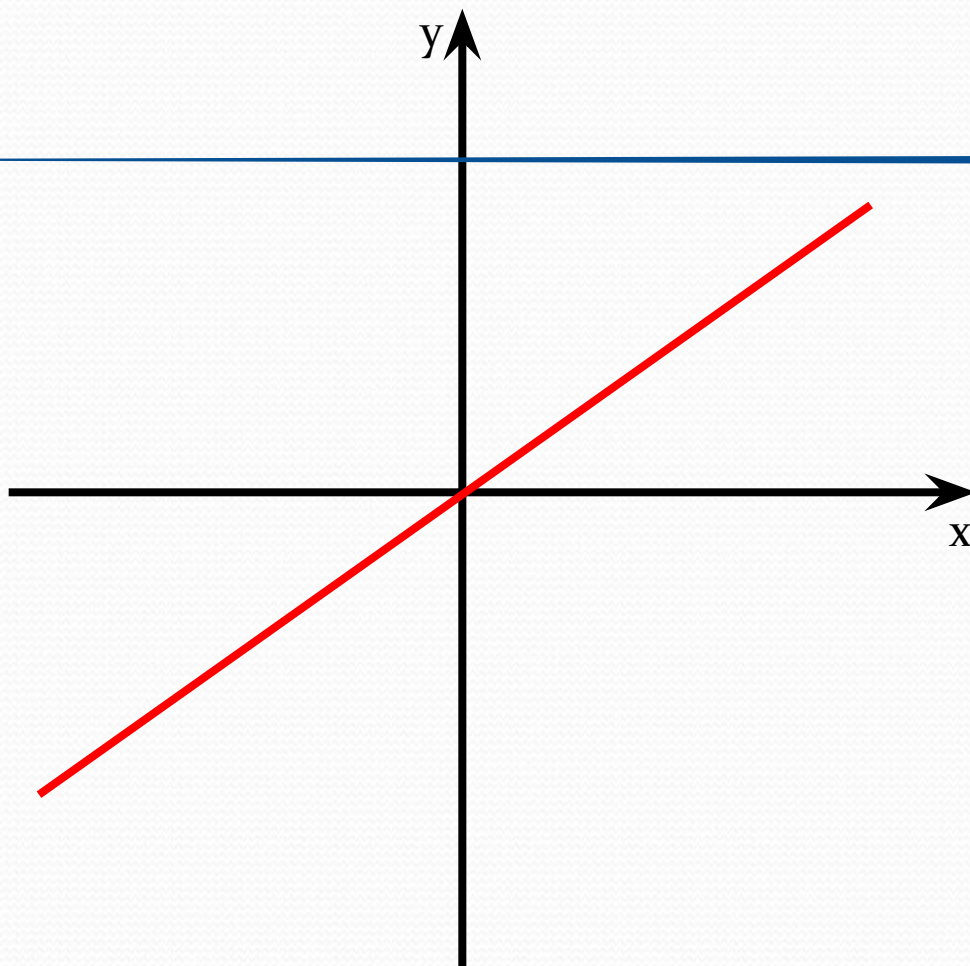


$$y=kx+b$$

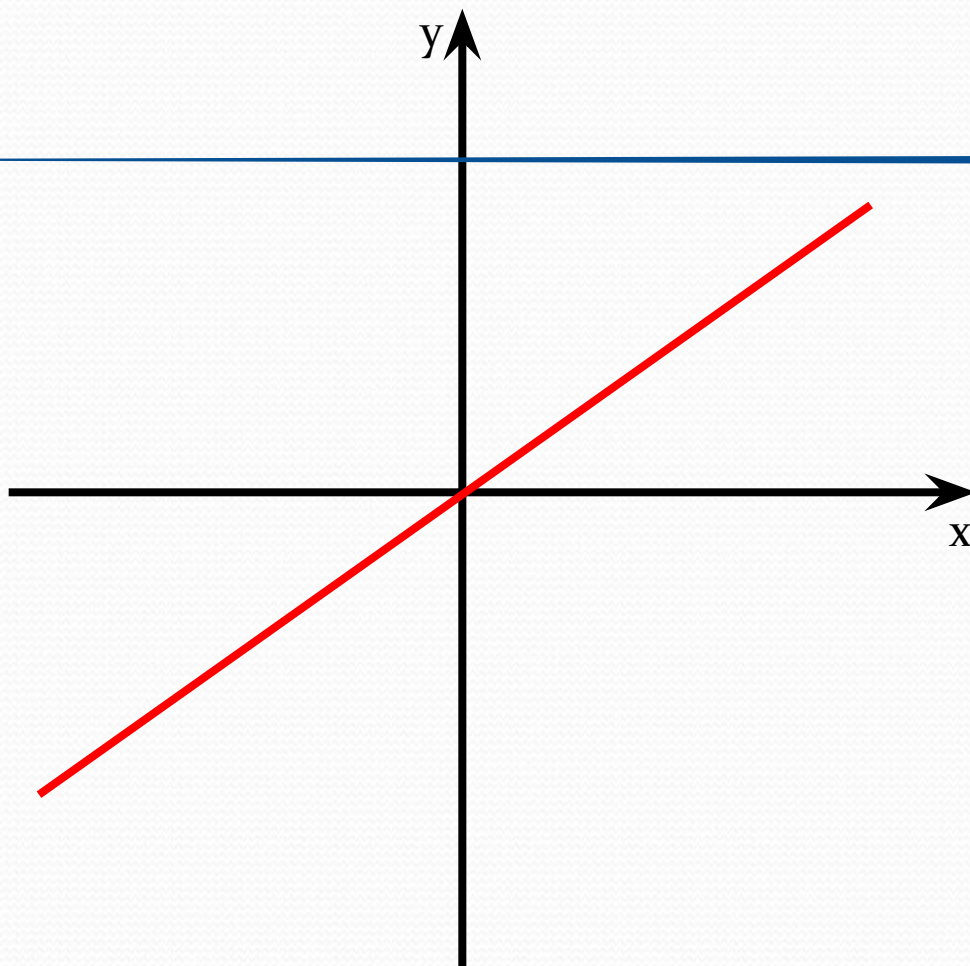




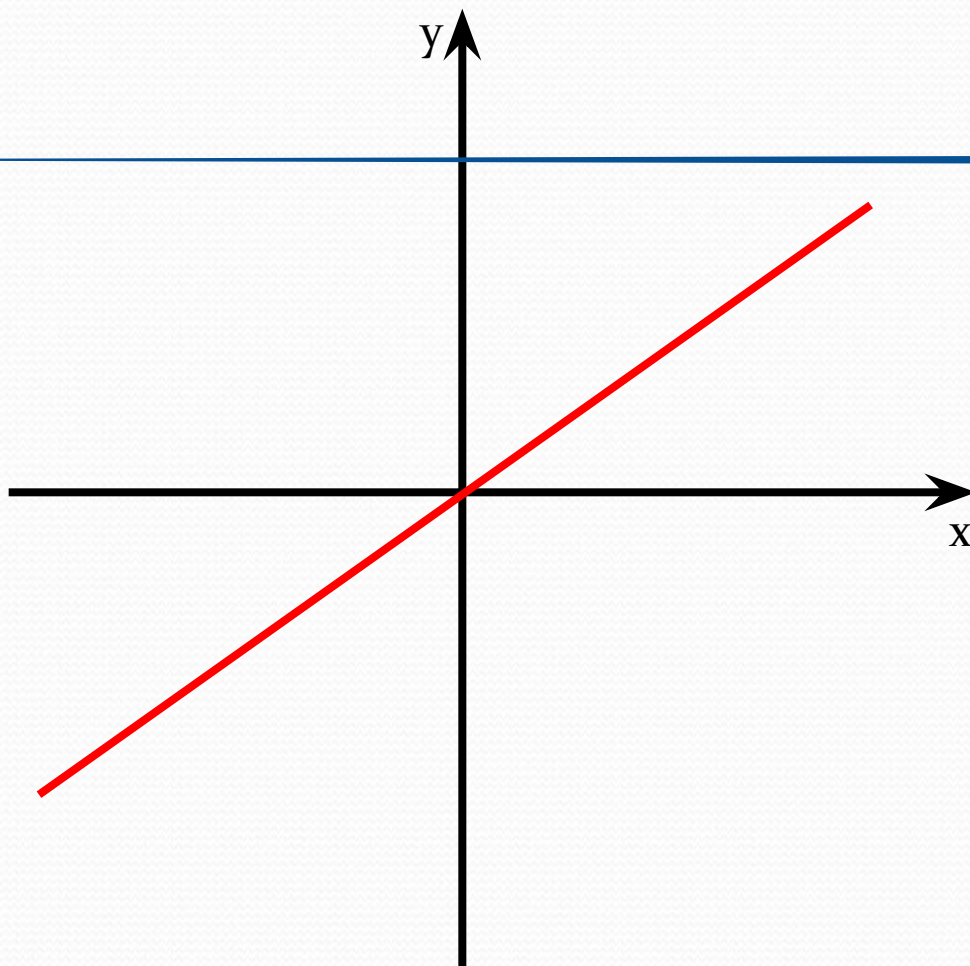
$k > 0$
 $b > 0$



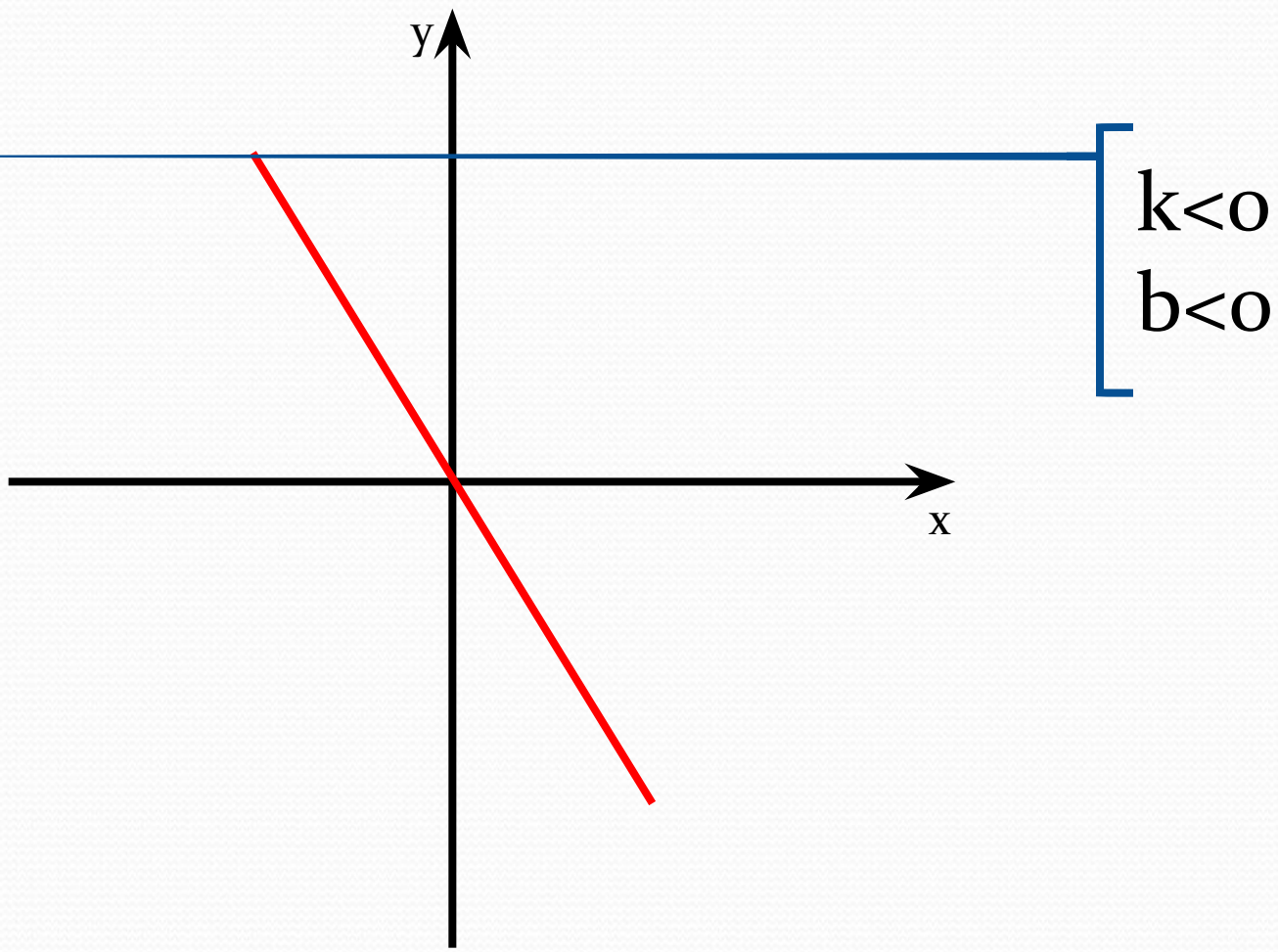
$k > 0$
 $b < 0$

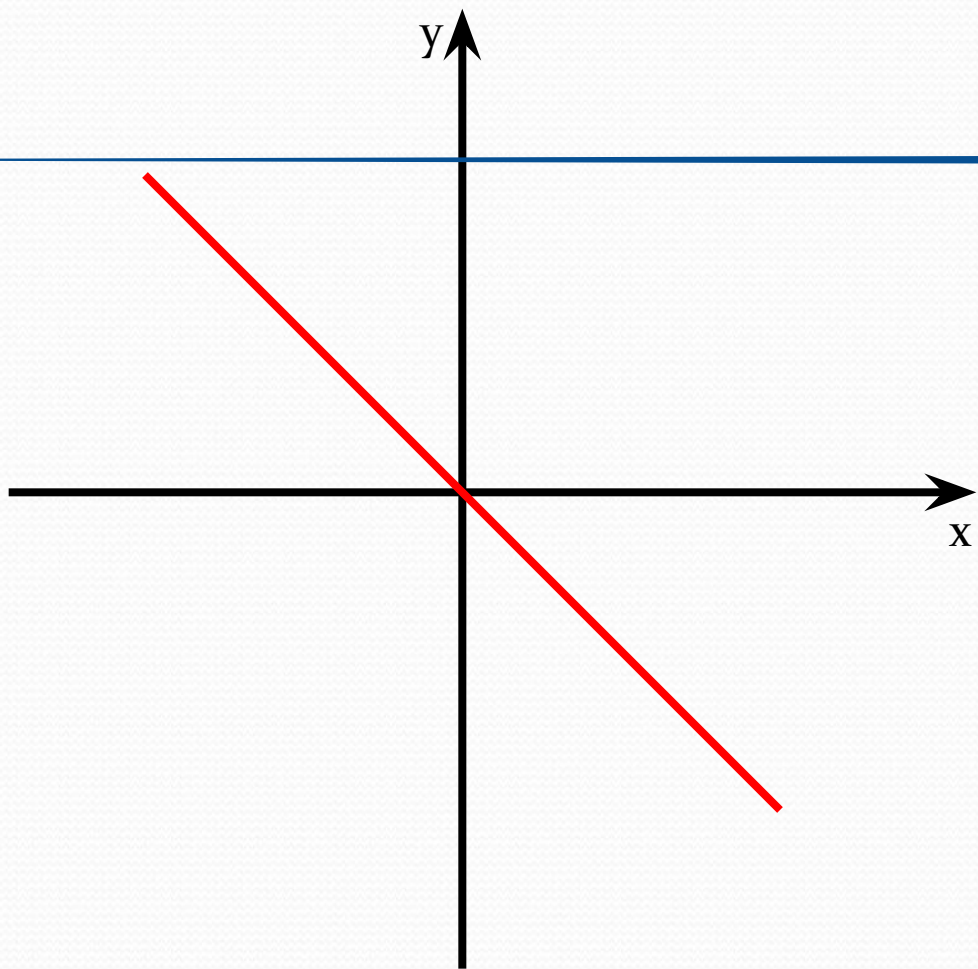


$k > 0$
 $b < 0$



$k < 0$
 $b < 0$





$k < 0$
 $b > 0$

