

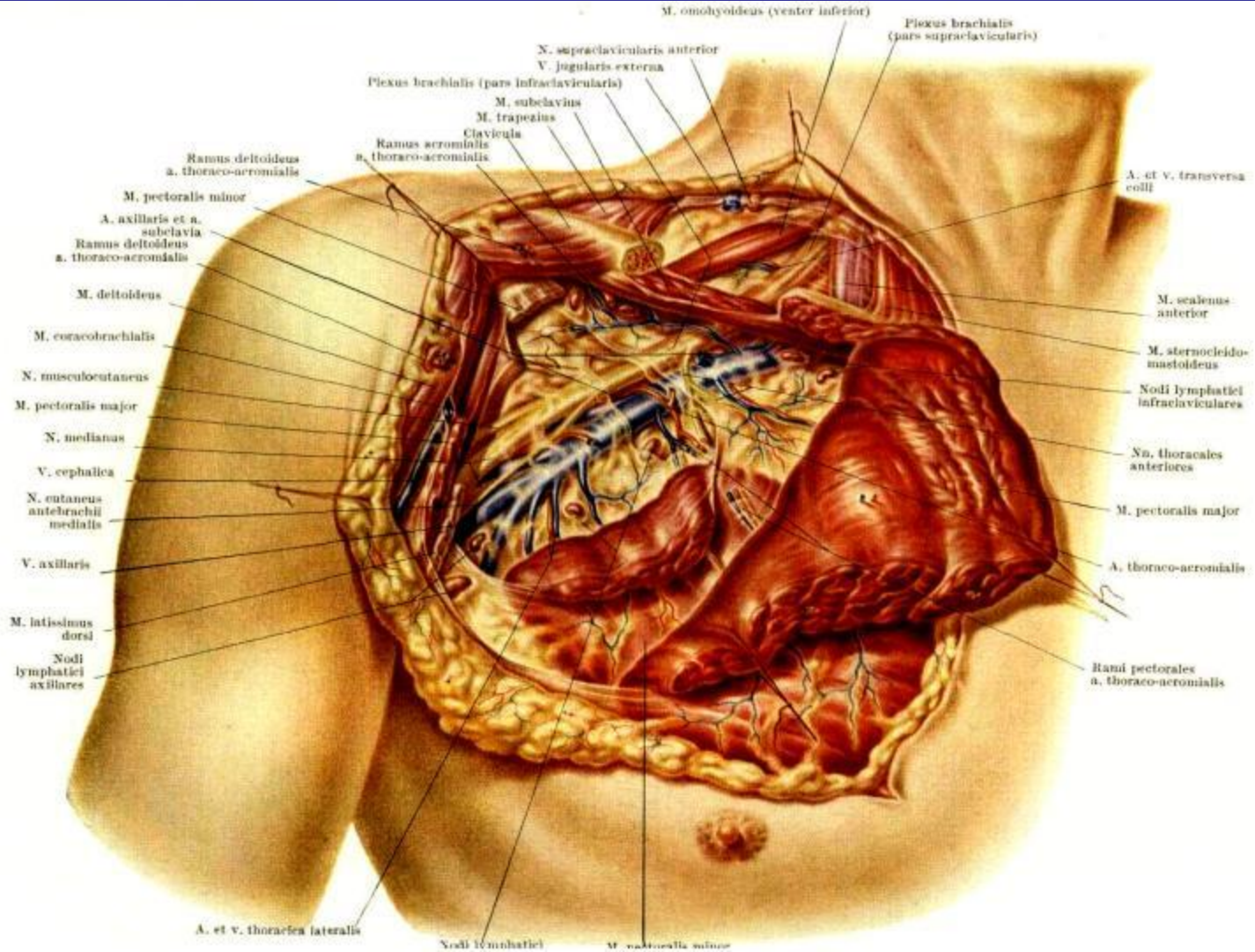
**Хирургическая
анатомия
периферических
сосудов**

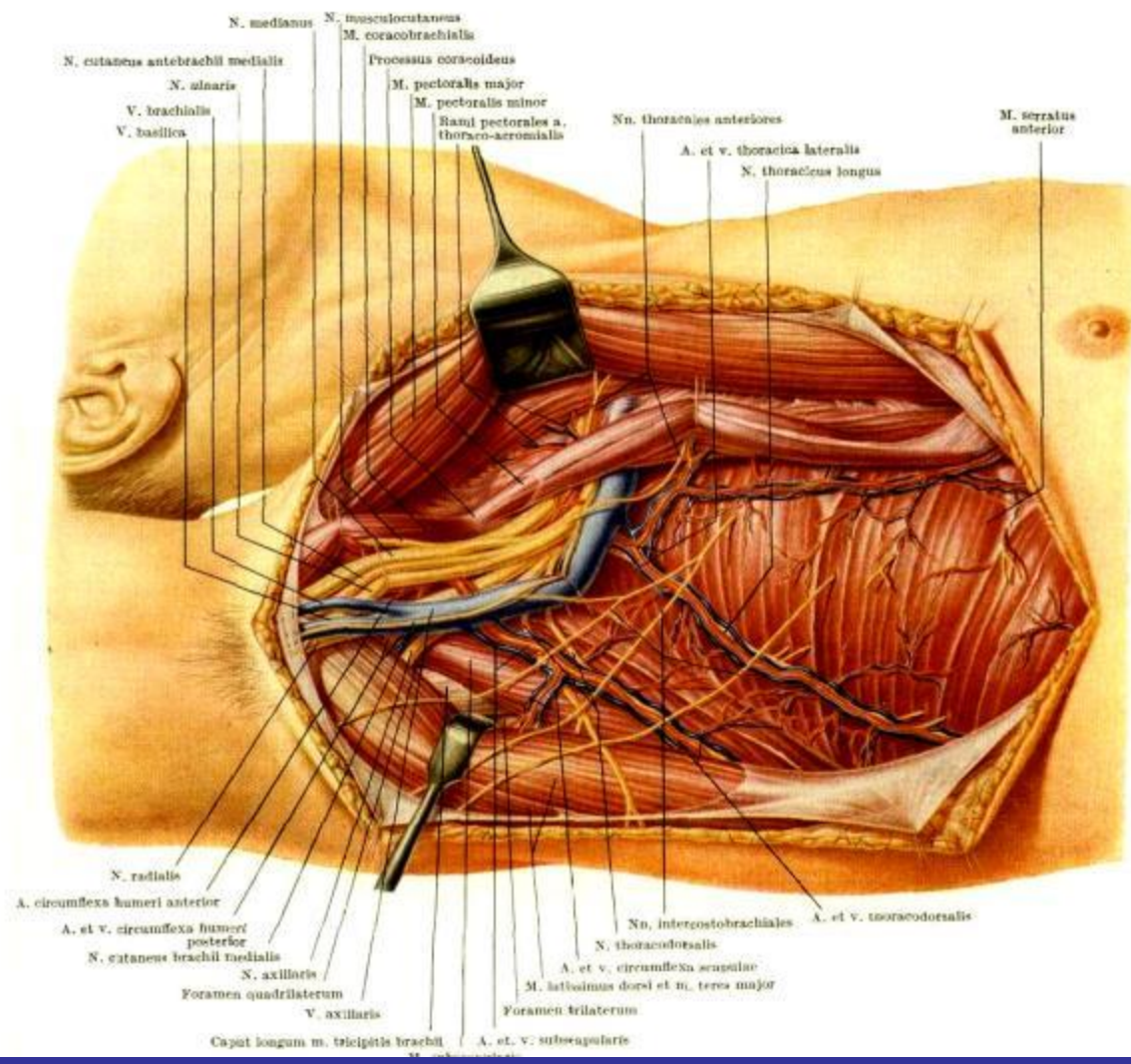
1. Хирургическая анатомия сосудов верхней и нижней конечностей.

2. Проекция сосудисто-нервных пучков конечностей

3. Доступы к сосудисто-нервным пучкам конечностей

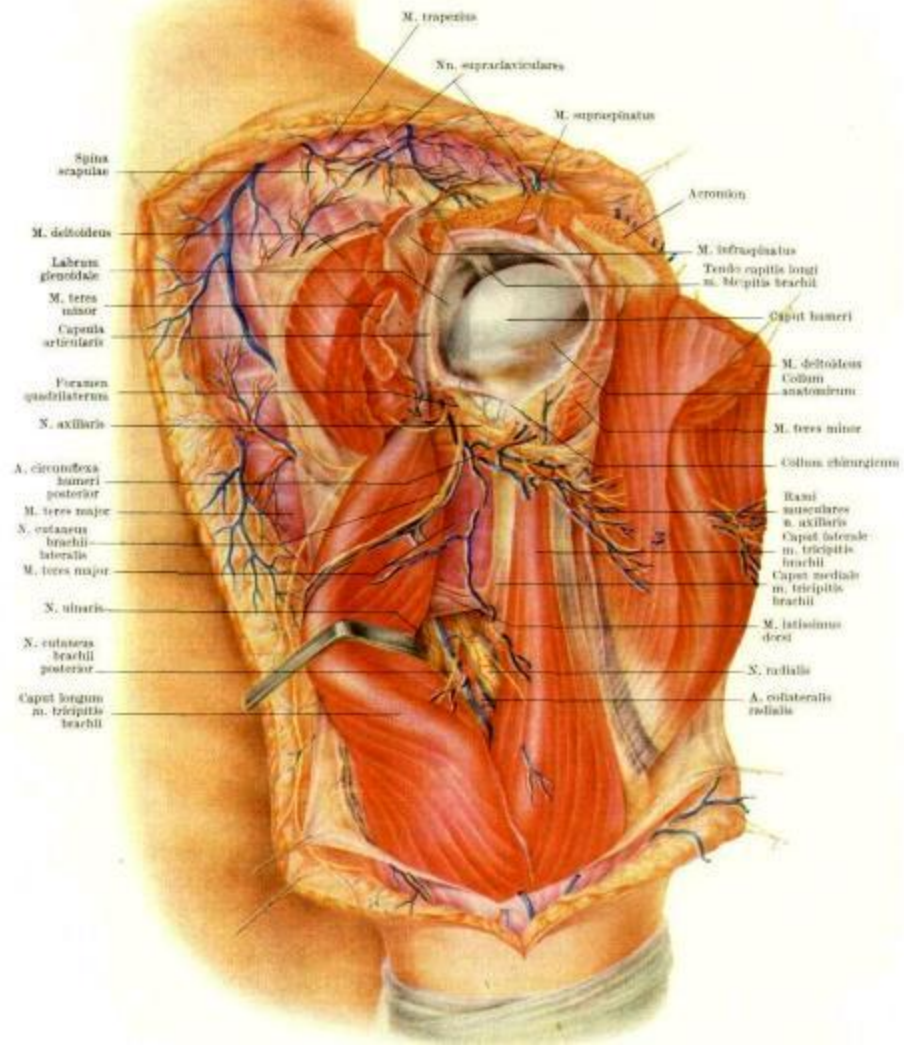
4. Операции на сосудах.

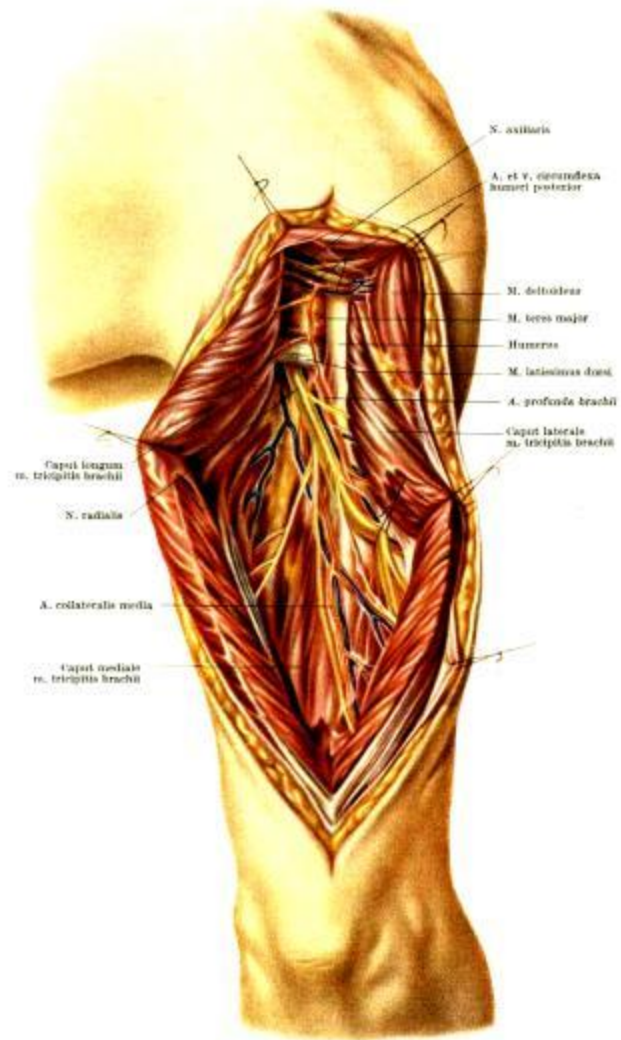




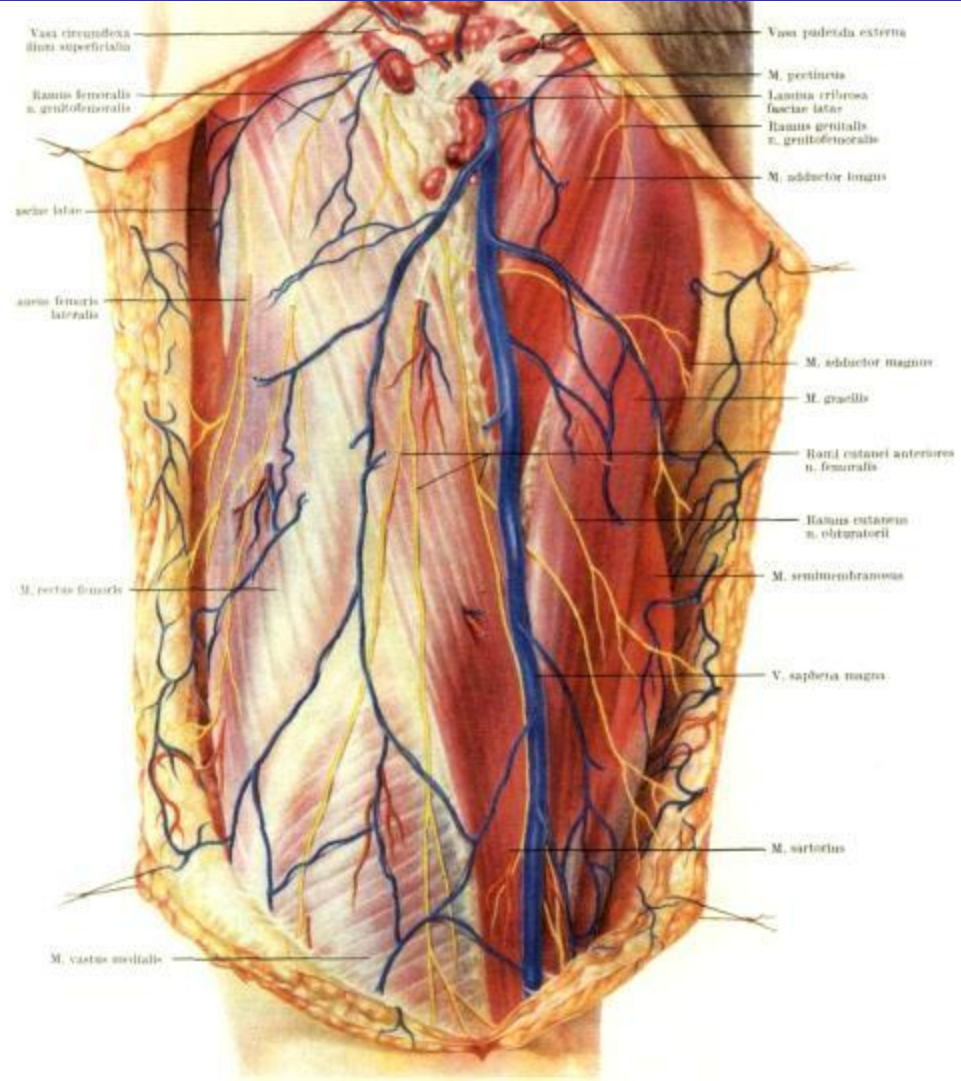
N. medianus N. musculocutaneus
 M. coracobrachialis
 N. cutaneus antebrachii medialis
 N. ulnaris
 V. brachialis
 V. basilica
 Processus coracoideus
 M. pectoralis major
 M. pectoralis minor
 Rami pectorales a. thoraco-acromialis
 Nn. thoracales anteriores
 A. et v. thoracica lateralis
 N. thoracicus longus
 M. serratus anterior

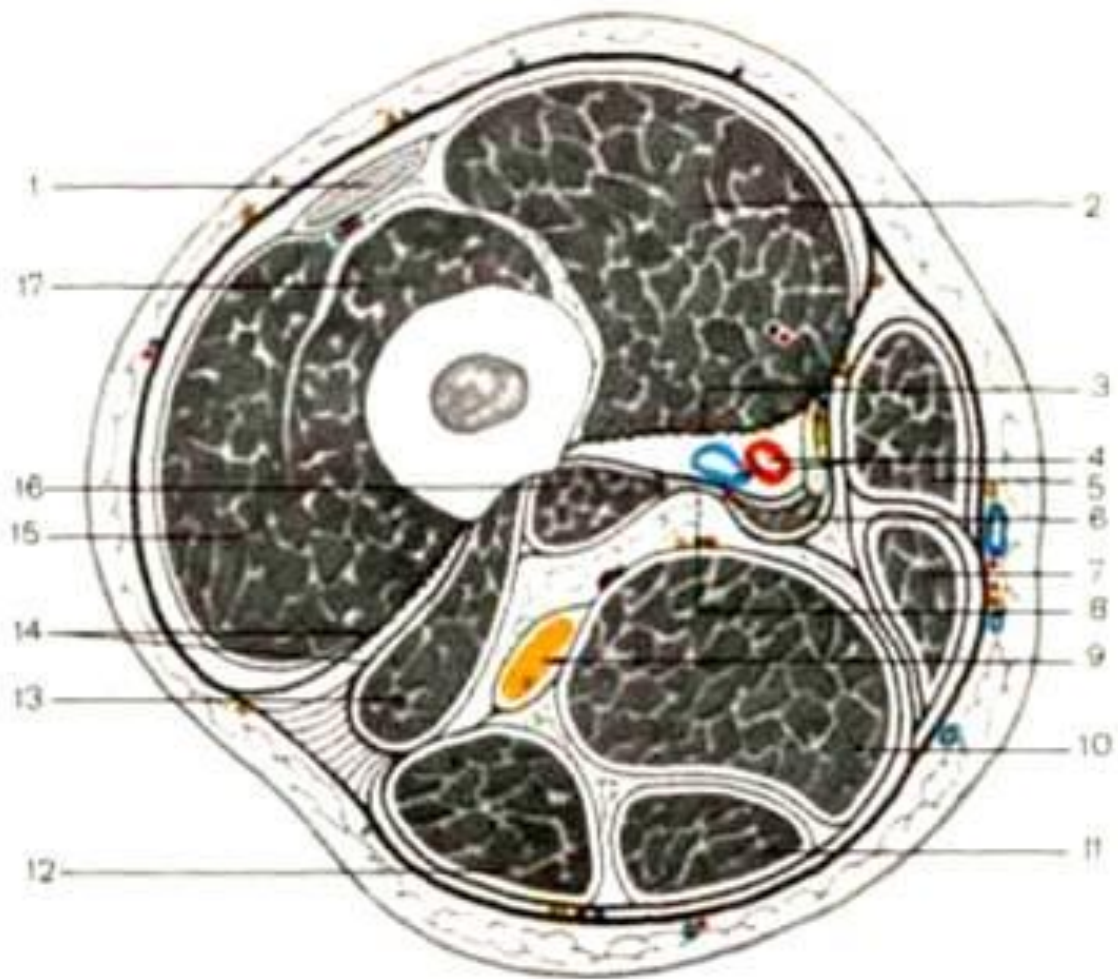
N. radialis
 A. circumflexa humeri anterior
 A. et v. circumflexa humeri posterior
 N. cutaneus brachii medialis
 N. axillaris
 Foramen quadrilaterum
 V. axillaris
 Caput longum m. tricipitis brachii
 Nn. intercostobrachiales
 N. thoracodorsalis
 A. et v. circumflexa scapularis
 M. latissimus dorsi et m. teres major
 Foramen triaterum
 A. et v. subscapularis

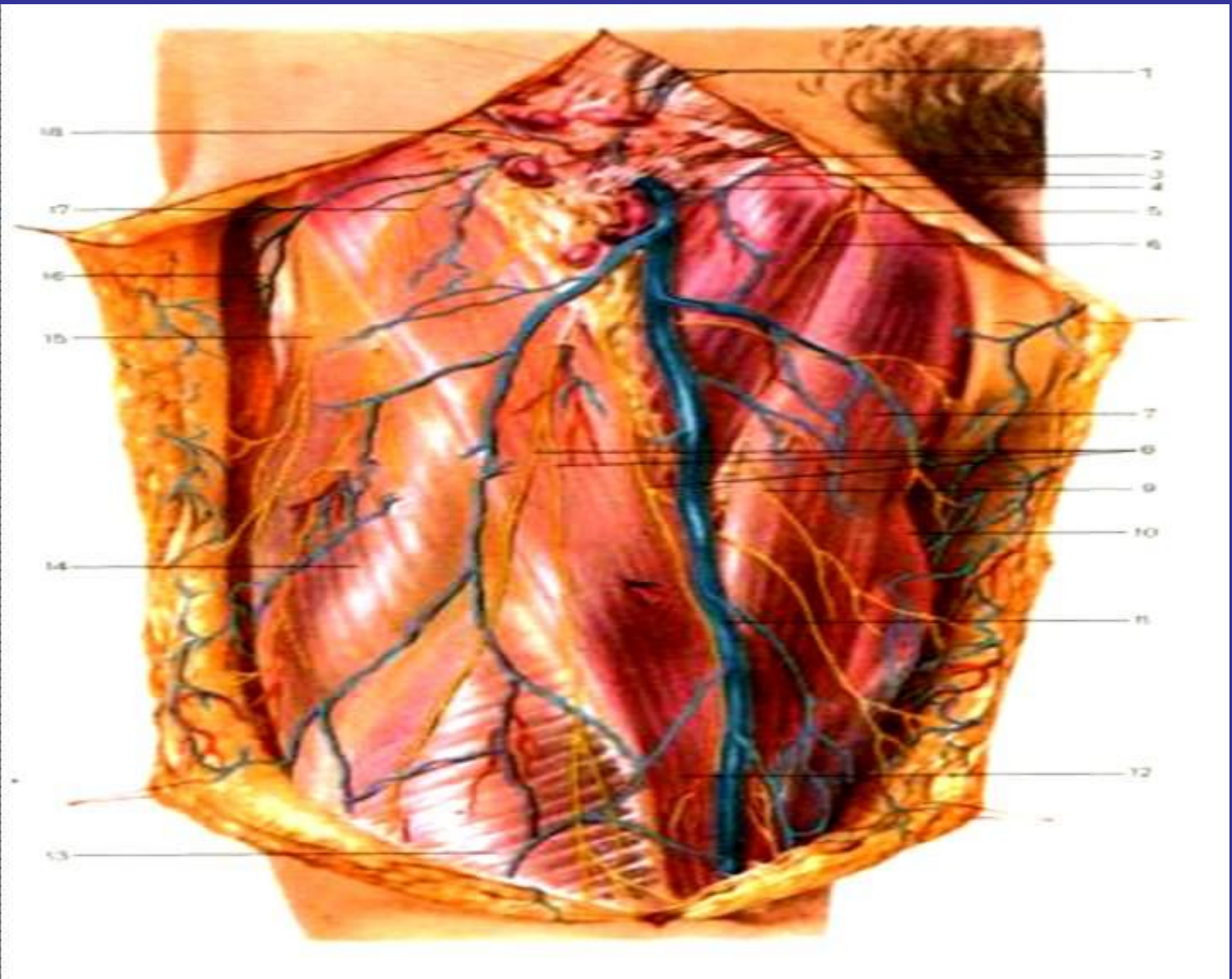


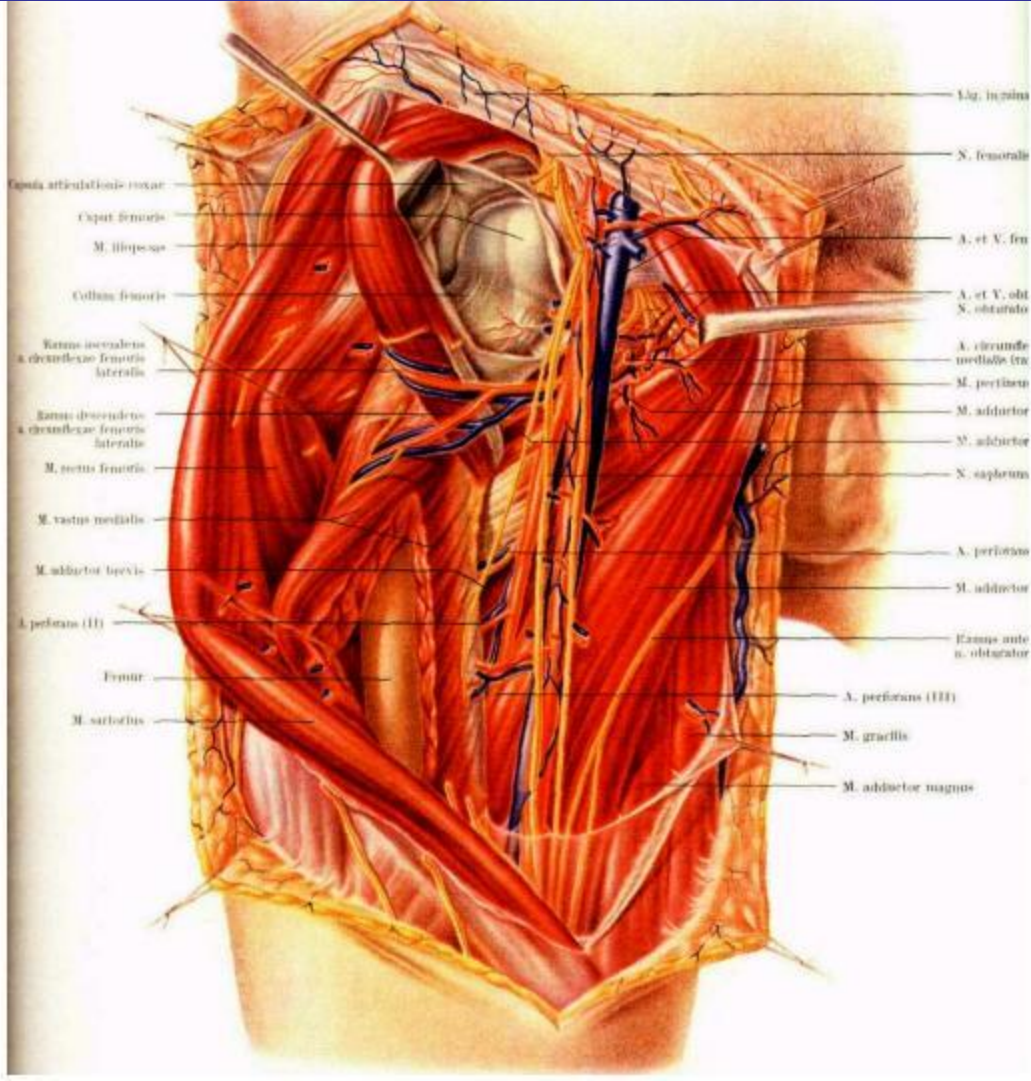


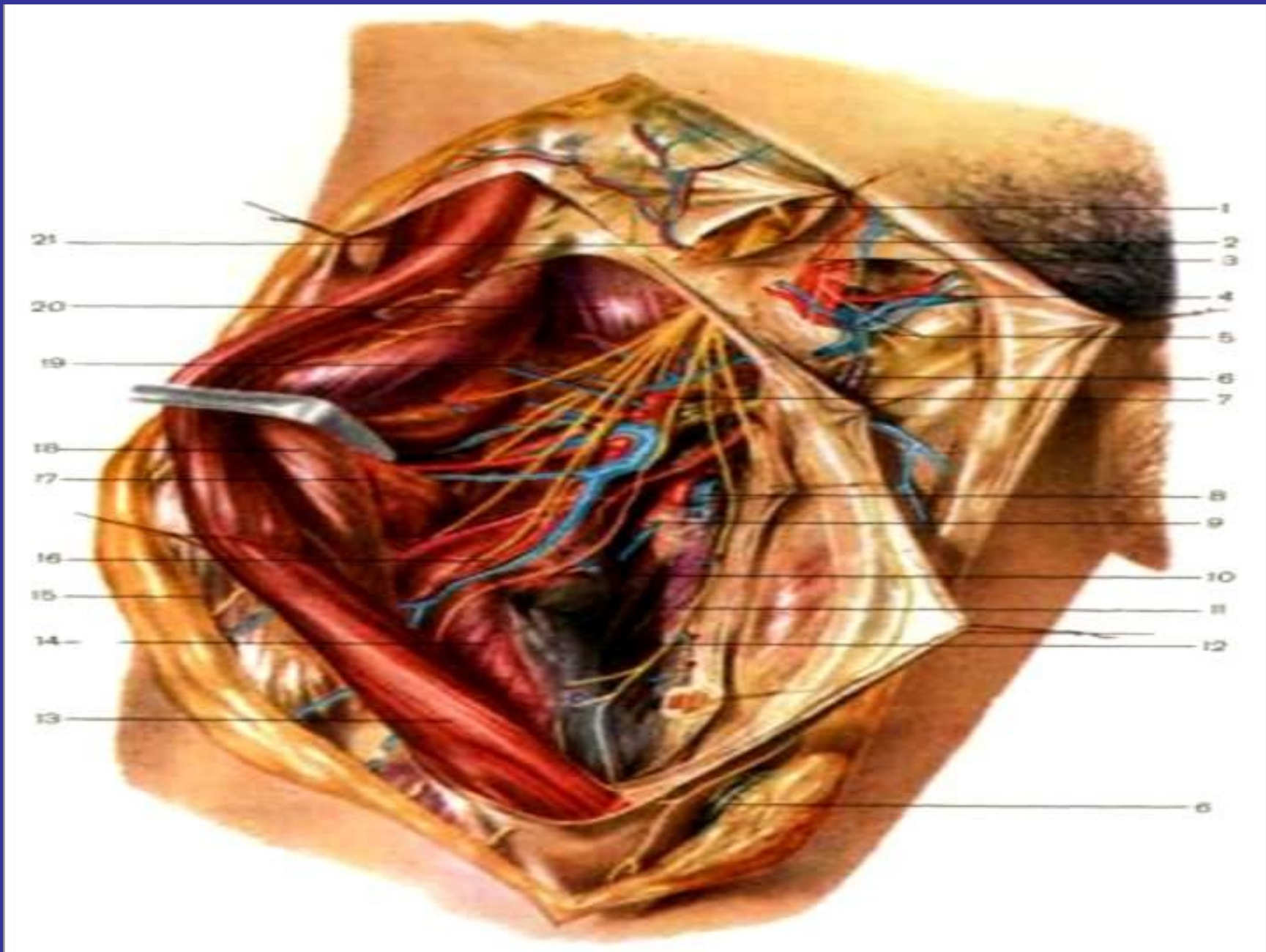


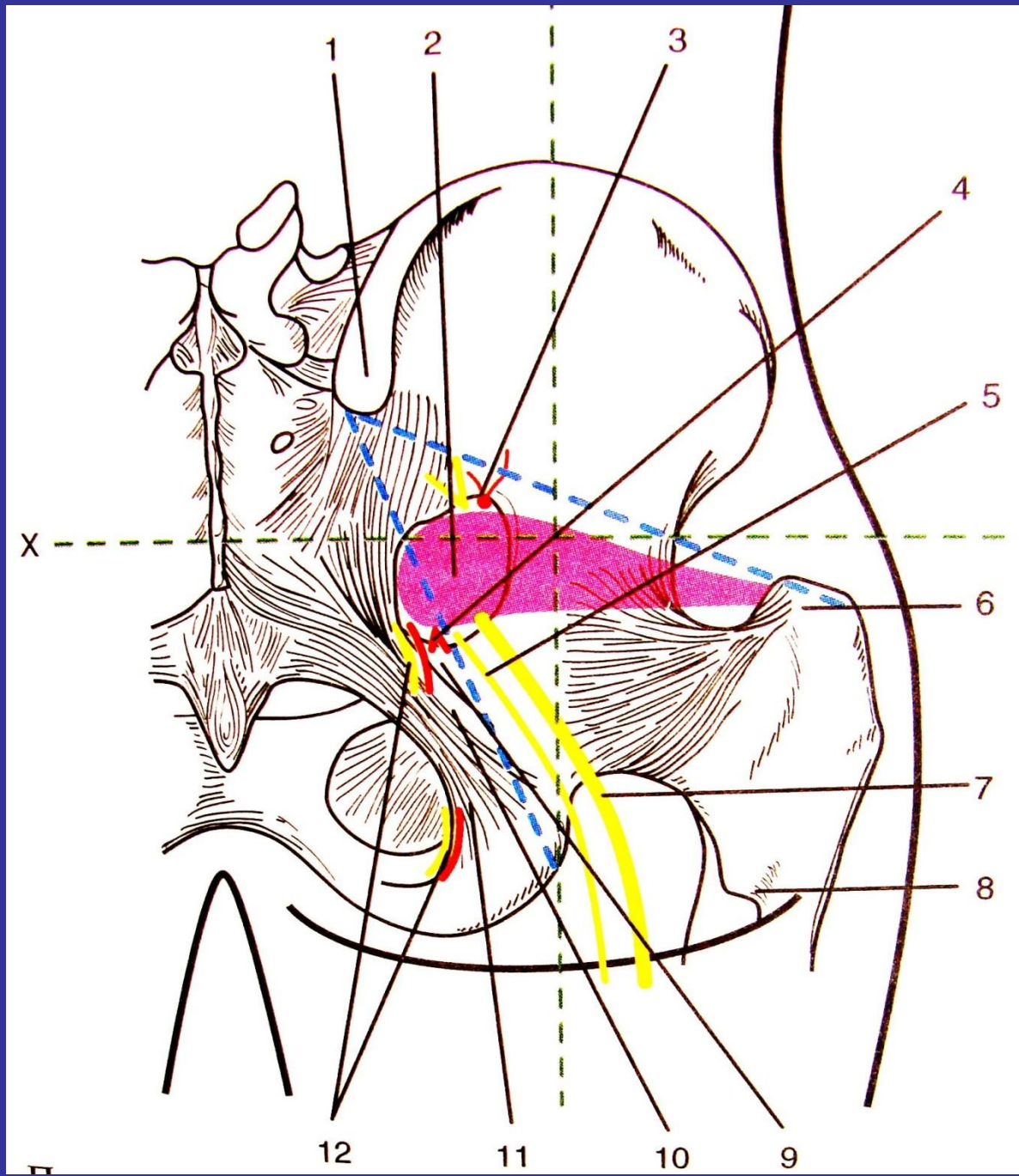


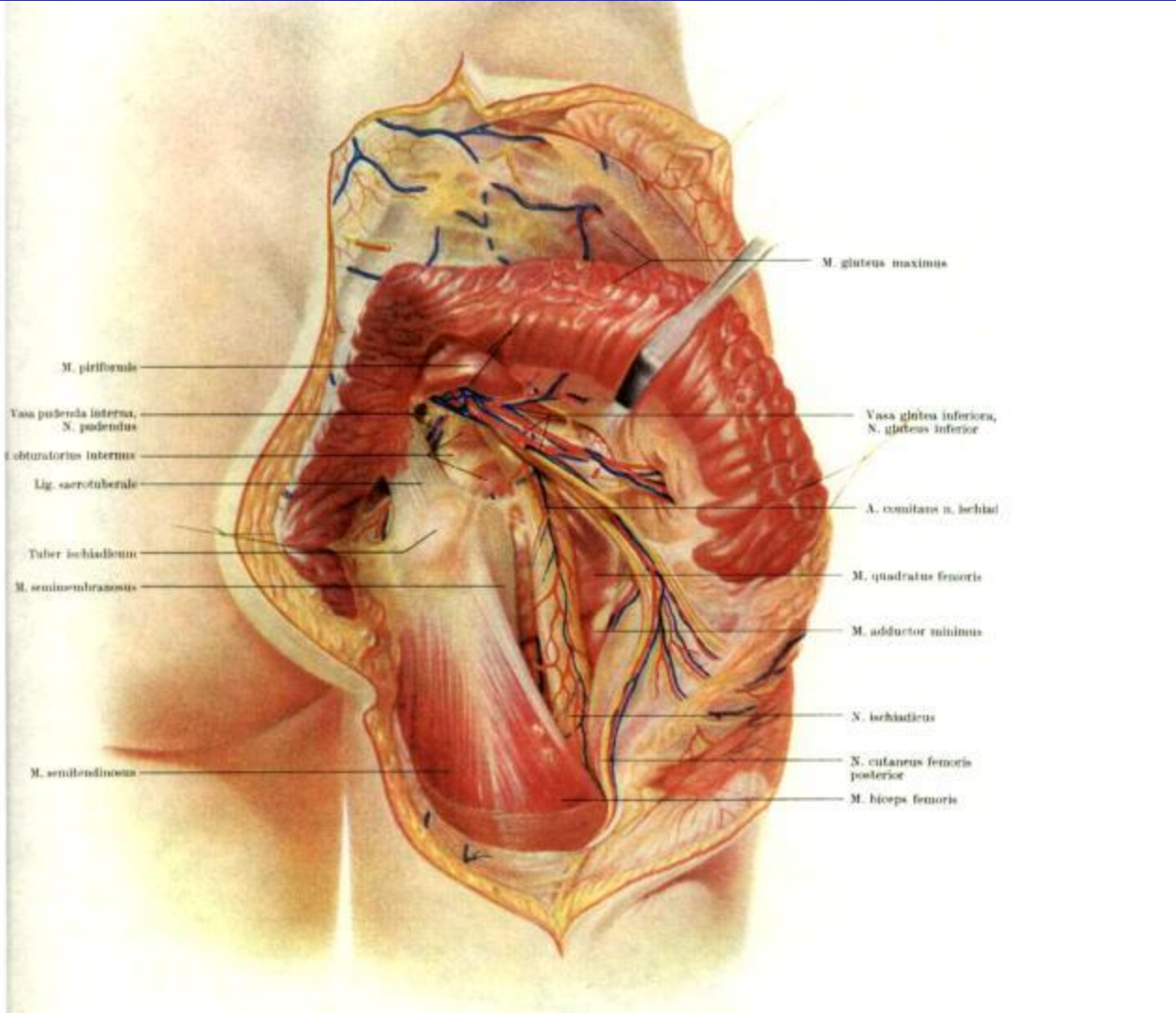


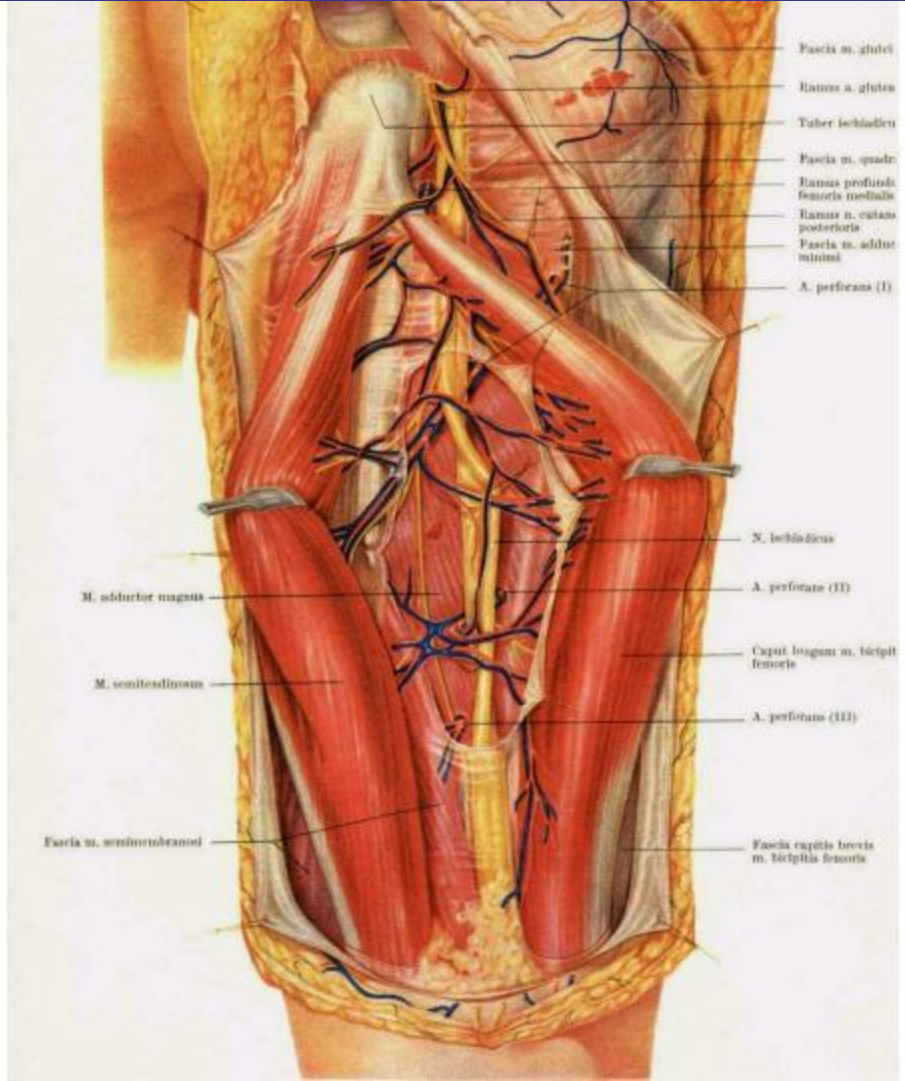












Fascia m. glutei

Emus a. glutei

Tuber ischiadicu

Fascia m. quadr

Emus profunde

femoris mediale

Emus n. cutane

posterioris

Fascia m. adduc

minimi

A. perforans (I)

N. ischiadicus

A. perforans (II)

Caput longum m. bicipit

femoris

A. perforans (III)

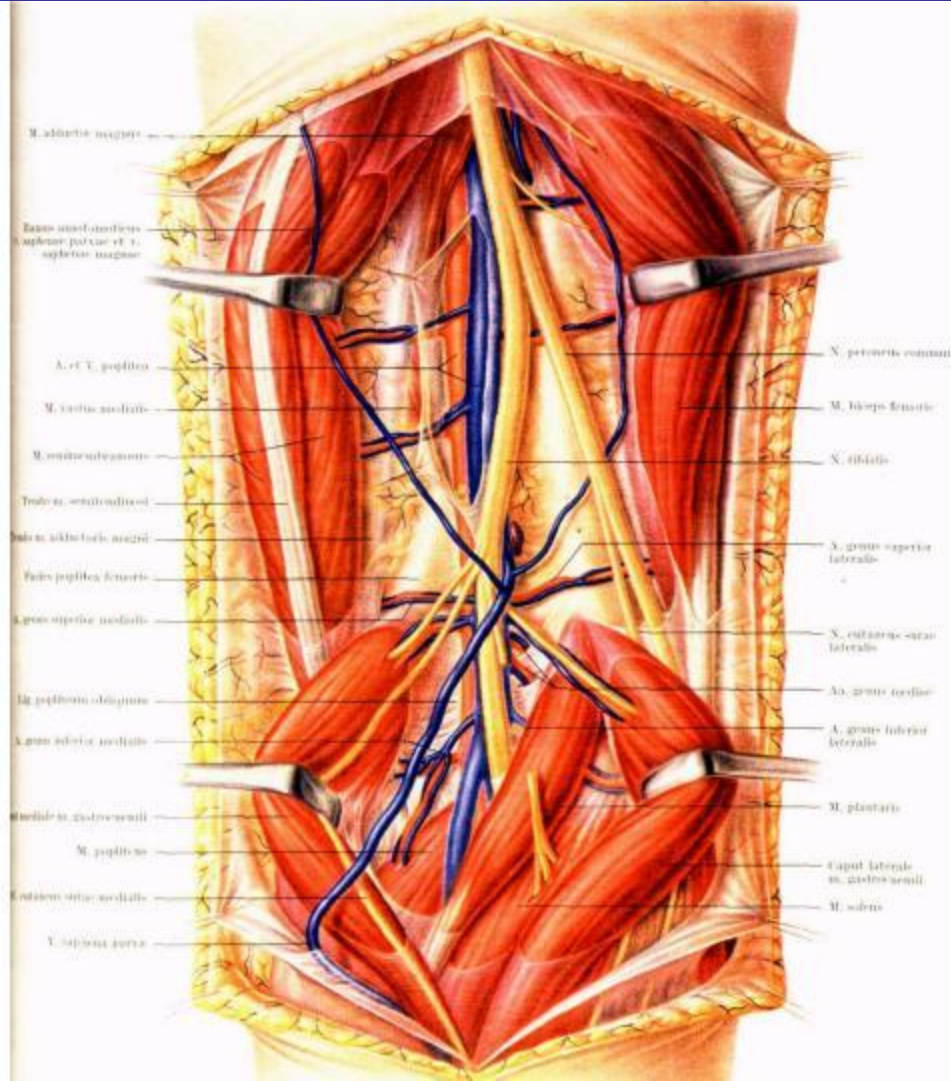
Fascia capitis brevis

m. bicipitis femoris

M. abductor magnus

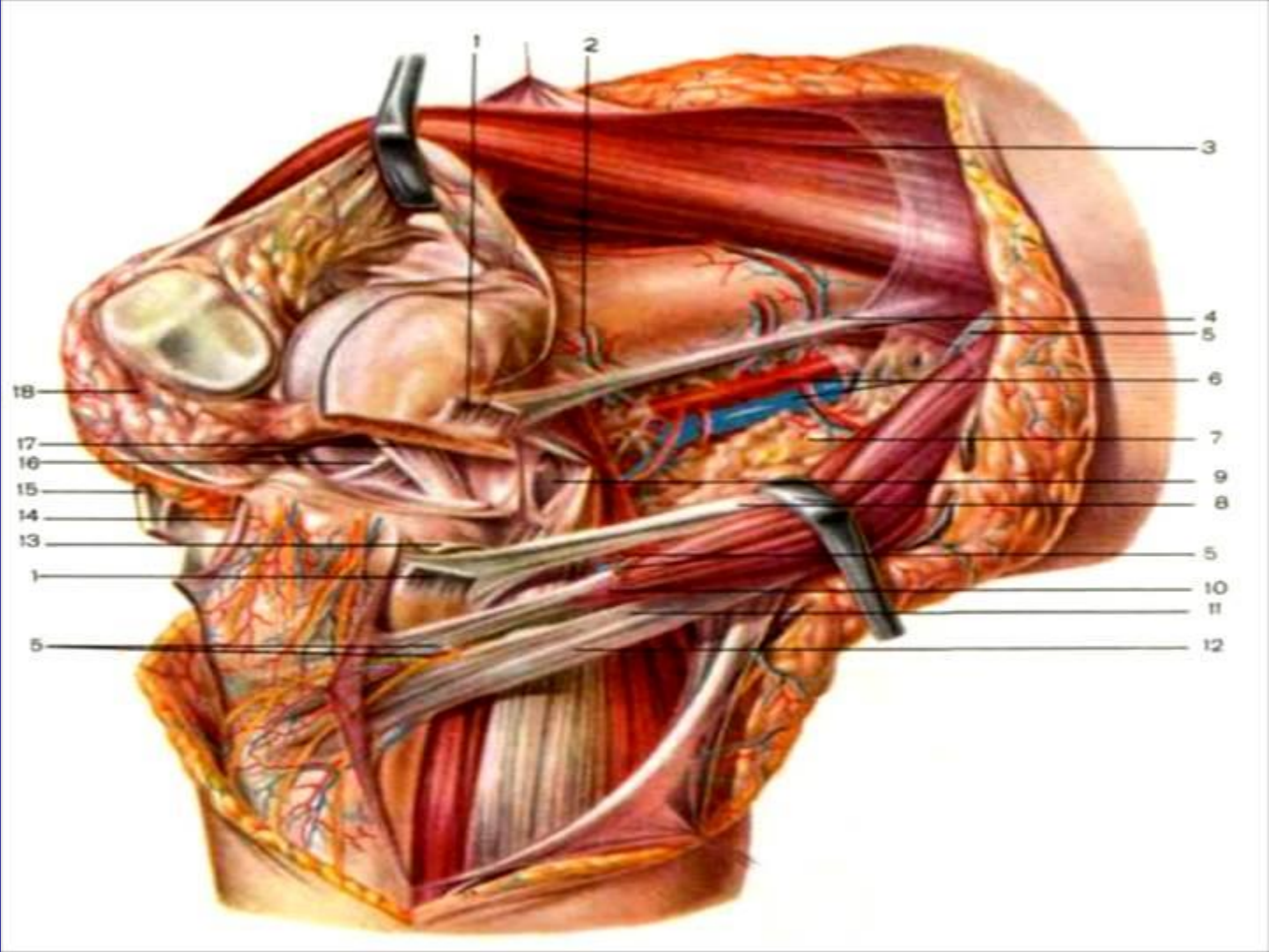
M. semitendinosus

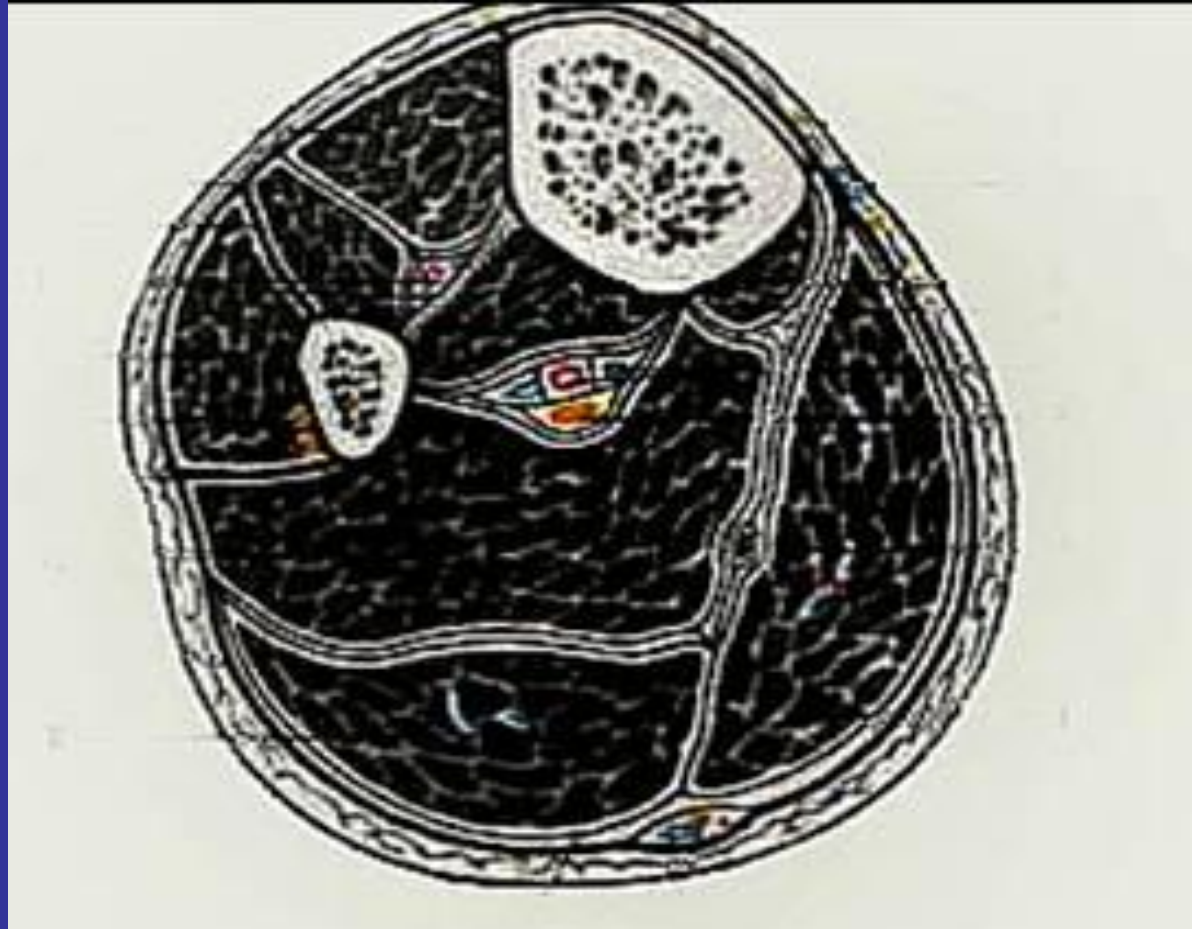
Fascia m. semitendinosi

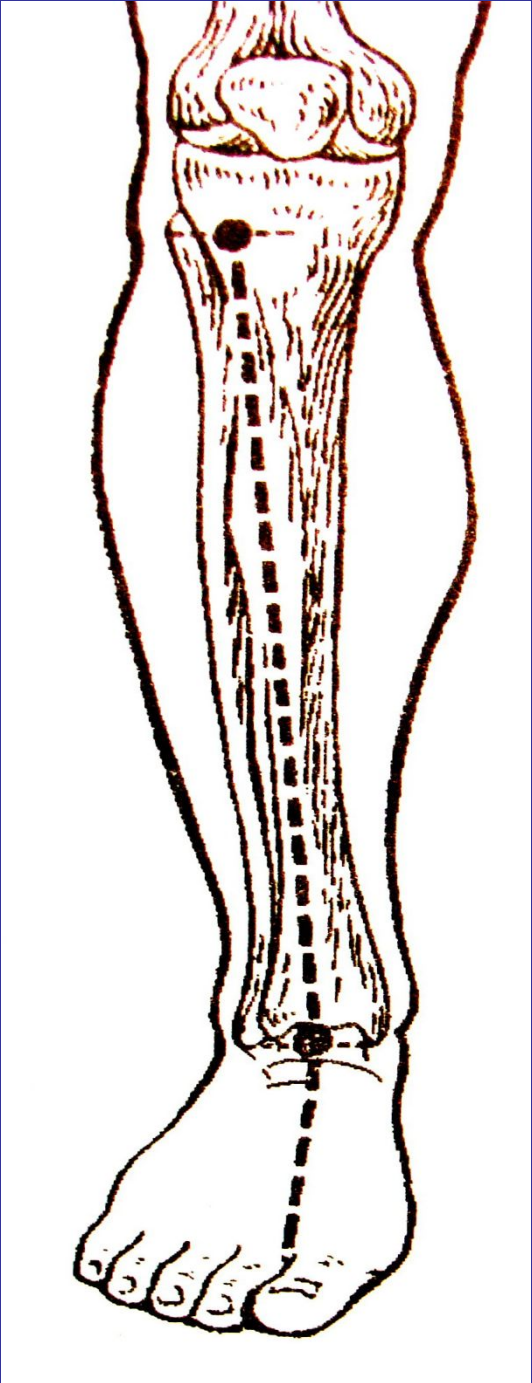


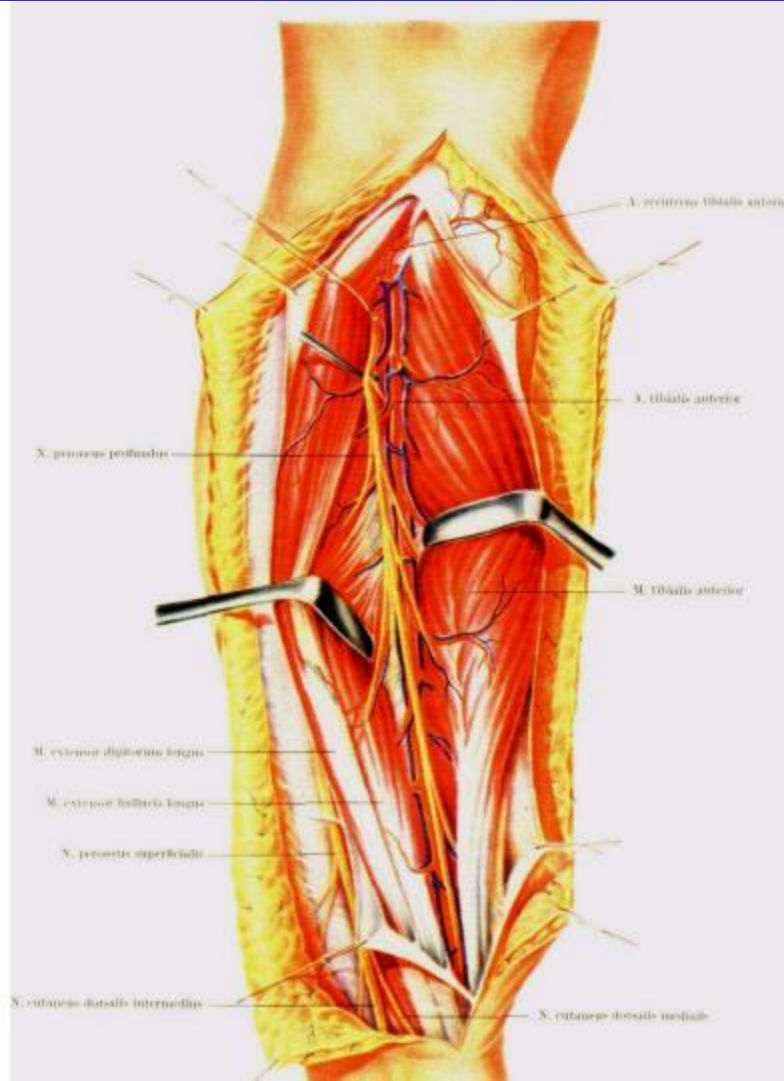
M. abductor digiti
 Tendo musculorum
 abductor pollicis et
 supinator longus
 A. et V. poplitea
 M. vastus medialis
 M. semitendinosus
 Tendo. semitendinosi
 Tendo. adductoris acrii
 Pars poplitea femoris
 A. pons superior medialis
 D. popliteus obliquus
 A. pons inferior medialis
 Tendo. gastrocnemii
 M. popliteus
 Tendo. sive medialis
 V. sapientia tertia

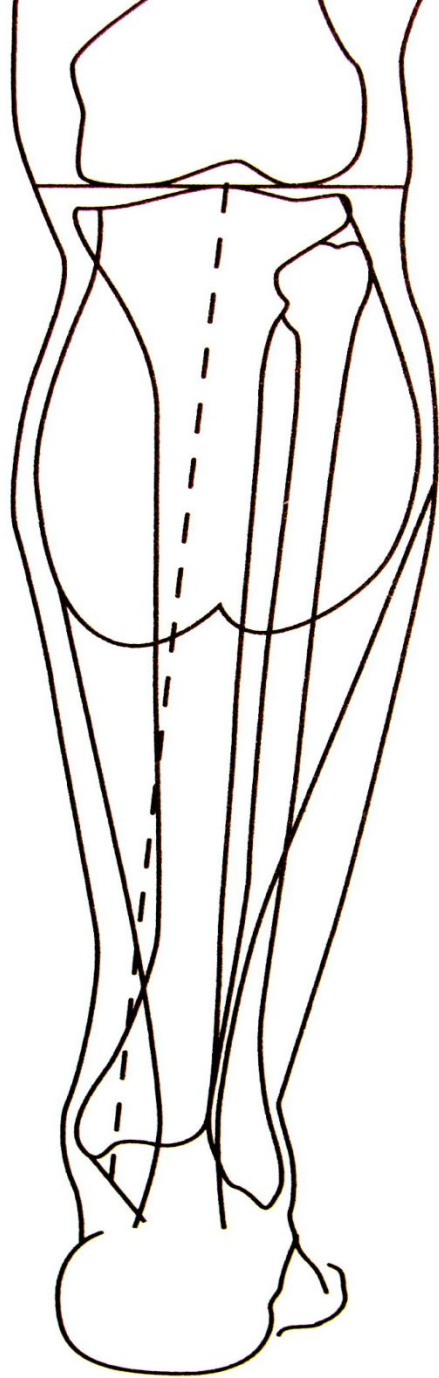
N. peroneus communis
 M. biceps femoris
 N. tibialis
 N. pons superior
 lateralis
 N. cutaneus surae
 lateralis
 A. pons medialis
 A. pons inferior
 lateralis
 M. plantaris
 Caput laterale
 m. gastrocnemii
 M. soleus

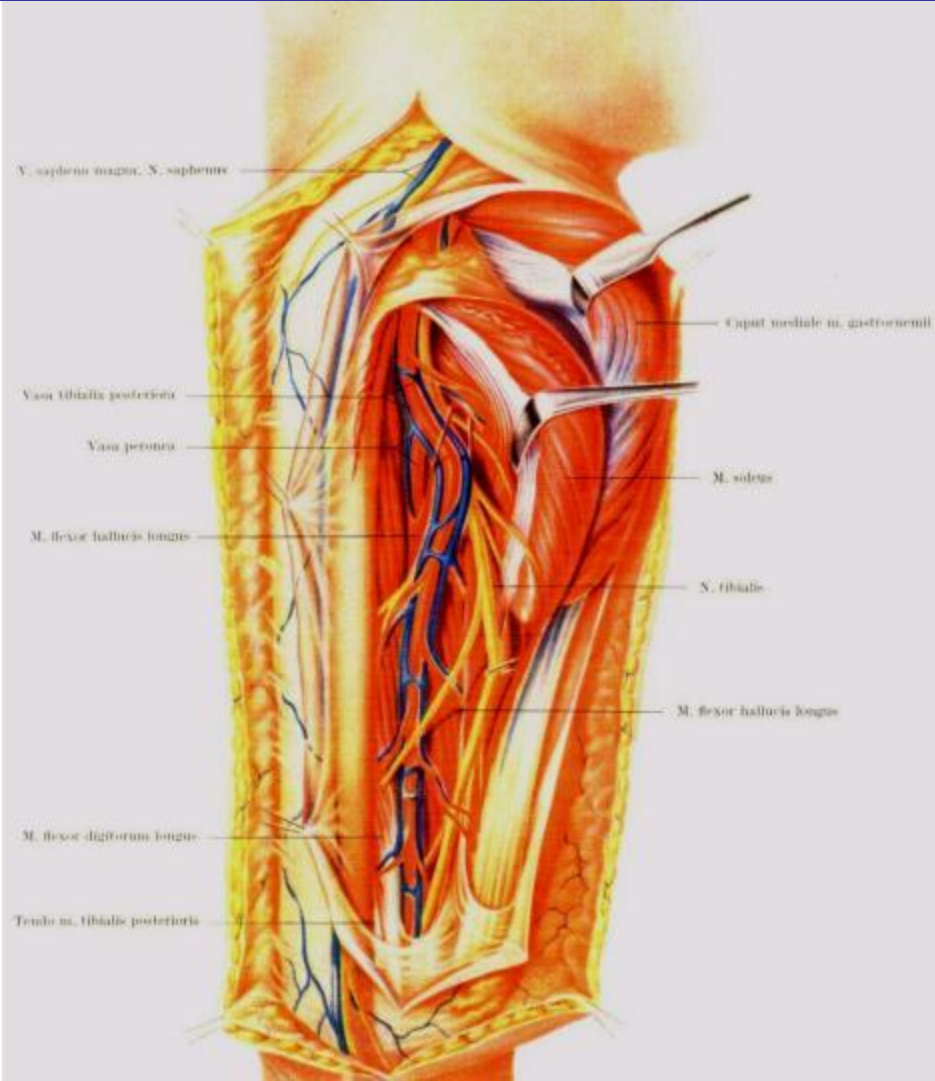


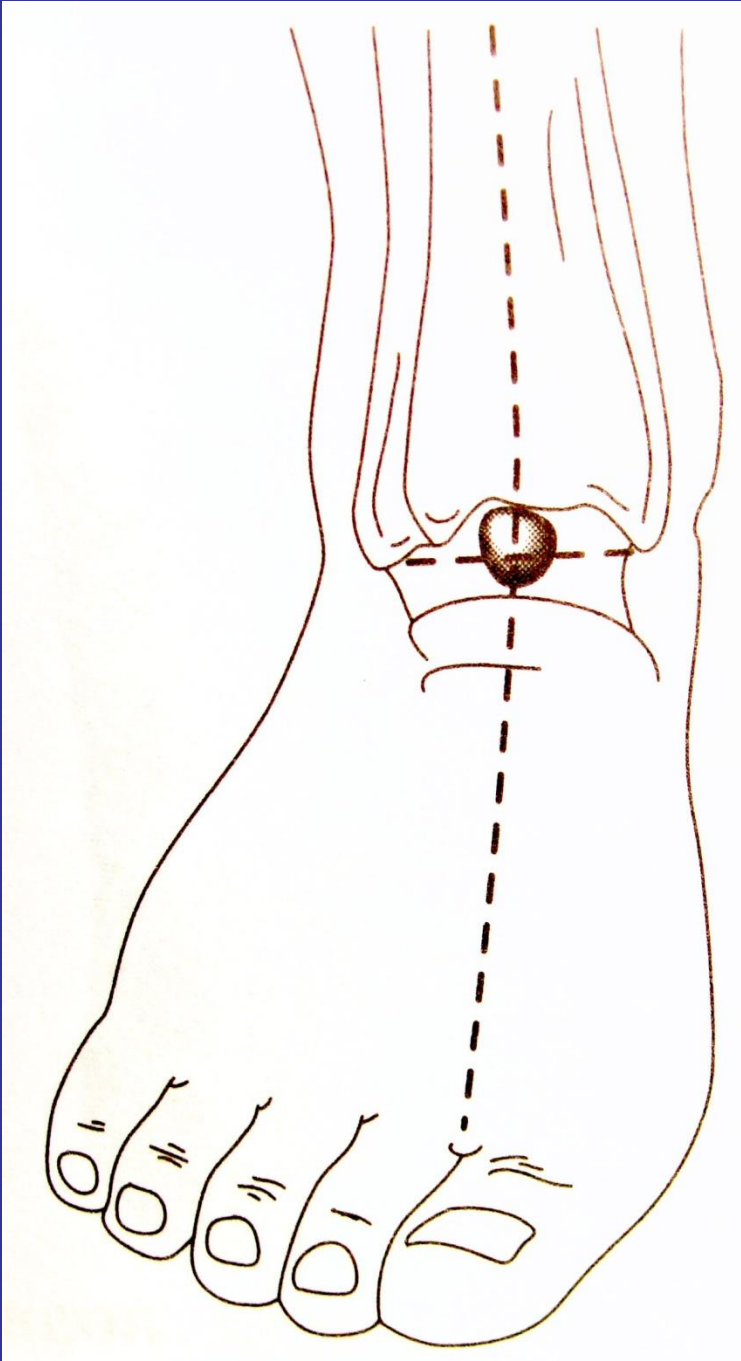


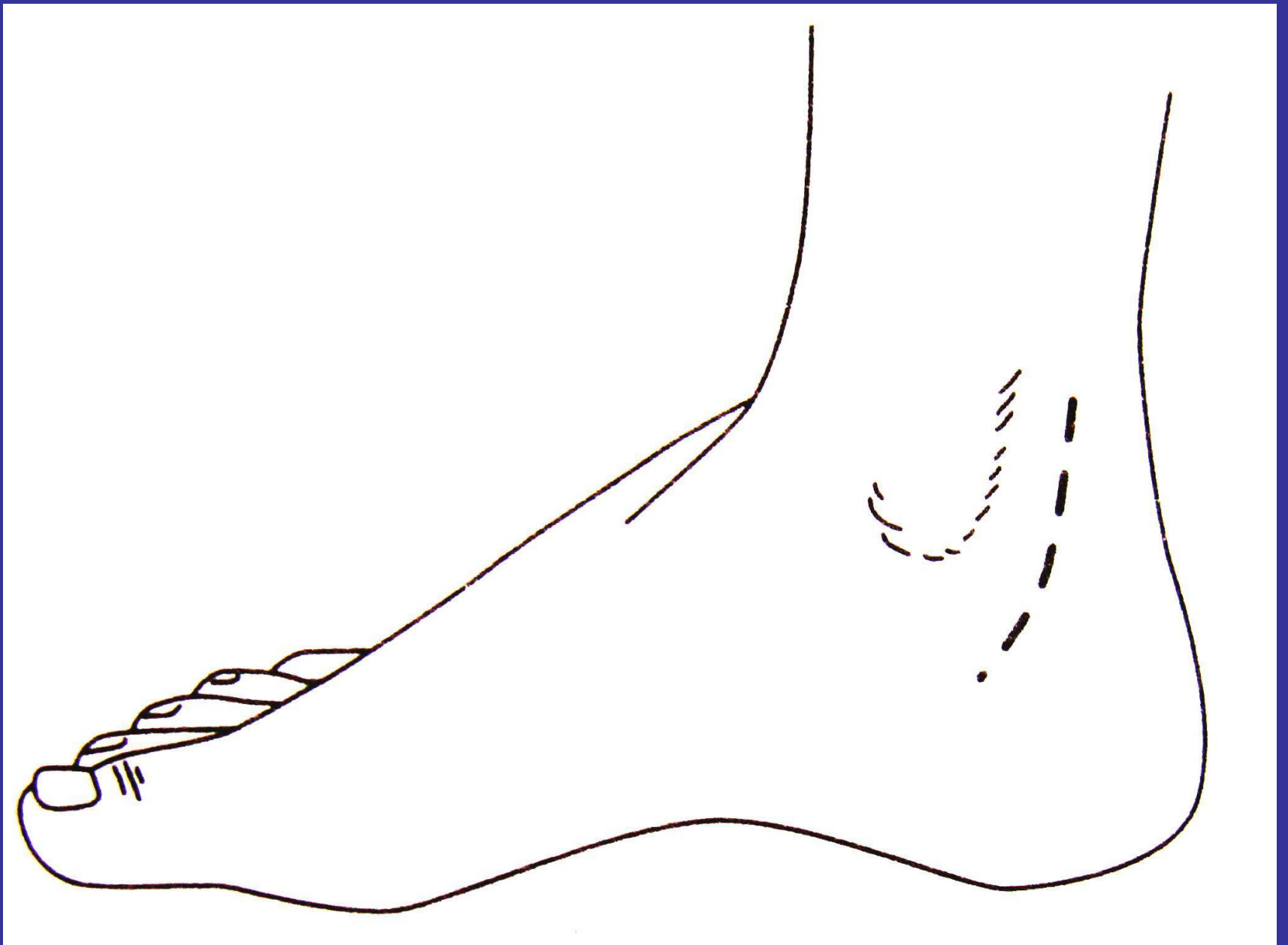


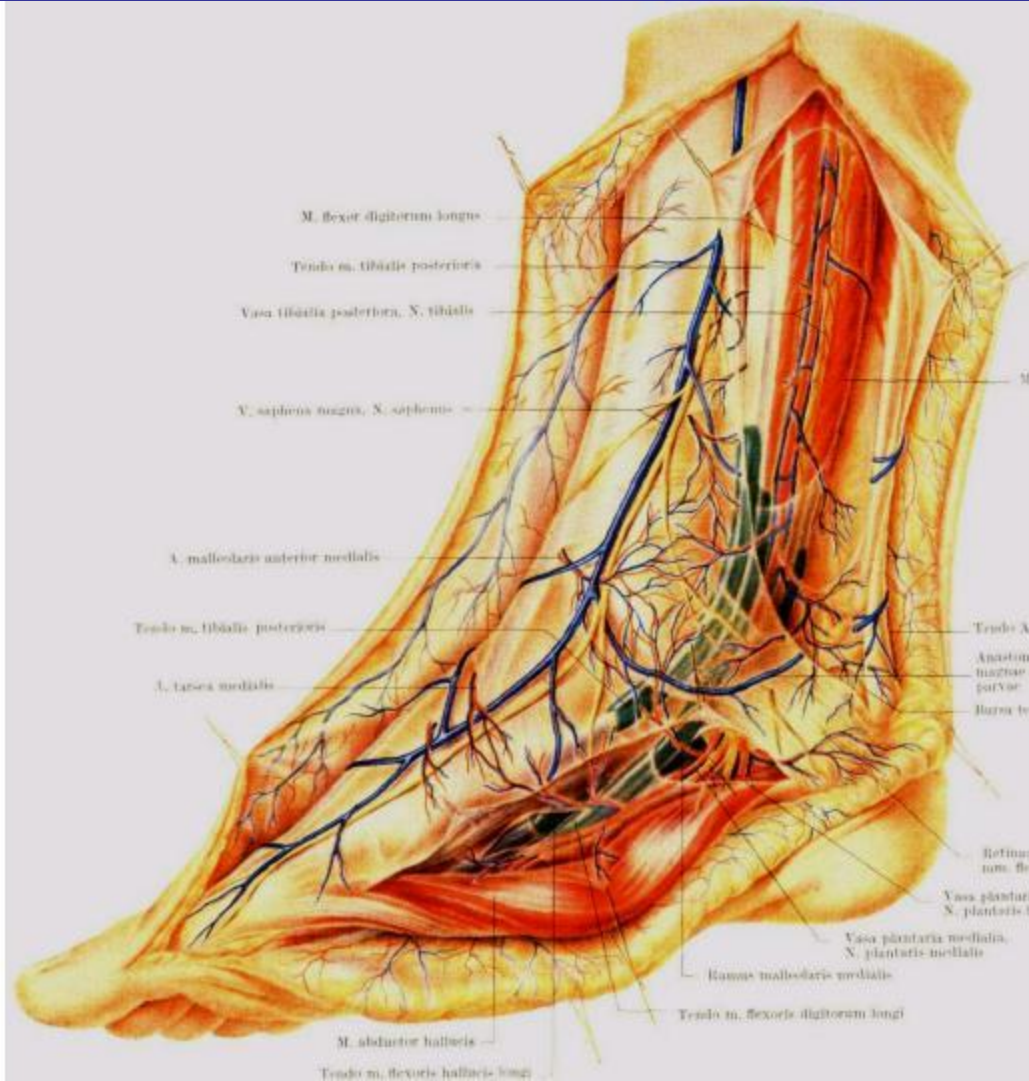














3008-11
1 TI-CROWN®
14 Metric Thread for 4/2 Polyester Film
DOR
DOR Surgical Instruments Co. Inc. Wallingford, CT 06495