

User name – cpeadmin
Password - cpeadmin



A screenshot of a Windows-style login dialog box. The title bar is blue and contains the text "Login" and a close button (X). The dialog has a light gray background. It contains two input fields: "User name:" with the text "cpeadmin" and "Password:" with a masked password of "*****". At the bottom, there are two buttons: "OK" and "Cancel".

Network Settings

- Network Settings
- Ntp Config
- Ftp Server

Check box Network Settings Profile > Insert

The screenshot displays the CPE Management application interface. On the left, a tree view shows the 'Network Settings' folder expanded, with 'Network Settings Profile' selected. The main window shows a table for 'Network Settings Profile' with columns: Name, Subnet Mask, Default Gateway, and Bootfile Name (not for Titans). The table is currently empty. A modal dialog titled 'Network Settings Profile - Insert' is open, containing input fields for Name, Subnet Mask, Default Gateway, and Bootfile Name (not for Titans). Below these fields are icons for Ntp Config and Ftp Server (not for Titans), each with a magnifying glass and a trash icon. At the bottom of the dialog are 'OK' and 'Cancel' buttons. The main window also has 'Insert', 'Modify', and 'Delete' buttons at the bottom. A status bar at the very bottom shows a log of messages: '05:17:07 No records found.', '05:43:13 No records found.', '05:43:13 No records found.', and '05:50:23 No records found.'

CPE Management

File Actions Help

CPE

- Device Settings
 - Device
 - Device Status
 - Port Profile
 - Service Profile
 - QoS Group
 - Ldap Server
 - Terminal Type
- Interface Profile
- Line Profile
- Audio Profile
- Network Settings
 - Network Settings Profile
 - Ntp Config
 - Ftp Server
- FXO Profile
- MN Settings
- SMG User

Name	Subnet Mask	Default Gateway	Bootfile Name (not for Titans)
------	-------------	-----------------	--------------------------------

Network Settings Profile - Insert

Name

Subnet Mask

Default Gateway

Bootfile Name (not for Titans)

Ntp Config

Ftp Server (not for Titans)

OK Cancel



Show search form

Device Settings Network Settings

Insert Modify Delete

05:17:07 No records found.
05:43:13 No records found.
05:43:13 No records found.
05:50:23 No records found.

Network Settings Profile - Modify [X]

Name	<input type="text" value="My network profile"/>
Subnet Mask	<input type="text" value="255.255.255.192"/>
Default Gateway	<input type="text" value="010.013.006.067"/>
Bootfile Name (not for Titans)	<input type="text" value="bootrom.ld"/>
Ntp Config	
Ftp Server (not for Titans)	

Audio Profile

- Audio Profile >Insert
- Codec List
- Tones

Audio Profile - Insert

Name: My Audio Profile

Tone Generation: Adaptive

Bearer Capability: Speech

Codec List: [Icons: Glasses, Magnifying Glass, Trash]

Tone: [Empty List Box]

Buttons: Add..., View..., Remove

Buttons: OK, Cancel

CPE Management

File Actions Help

CPE Codecs Tones Codec List Audio Profile

Name	Default Tone ...	Number of Re...	Tone Signal
Def Dial	Dial	0	Tone Signal
Def Alert	Alert	0	Tone Signal
Def Busy	Busy	0	Tone Signal
Def Congestion	Congestion	0	Tone Signal
Def SIT	Special infor...	0	Tone Signal
Def Howler	Howler	0	Tone Signal
Def Beep	Beep	0	Tone Signal
Def SBT	Special busy t...	0	Tone Signal
Def SDT	Special dial t...	0	Tone Signal
Def CT	Confirmation ...	0	Tone Signal
Def RT	Rejection tone	0	Tone Signal

Row 1/11 11 Selected Show search form

Insert OK Cancel

Tone Generati... Bearer Capab... Codec List Tone

Adaptive Speech Codec List Tone

My Audio Profile

Adaptive

Speech

Add... View... Remove




OK Cancel

Audio Profile - Insert [X]




Name

Tone Generation

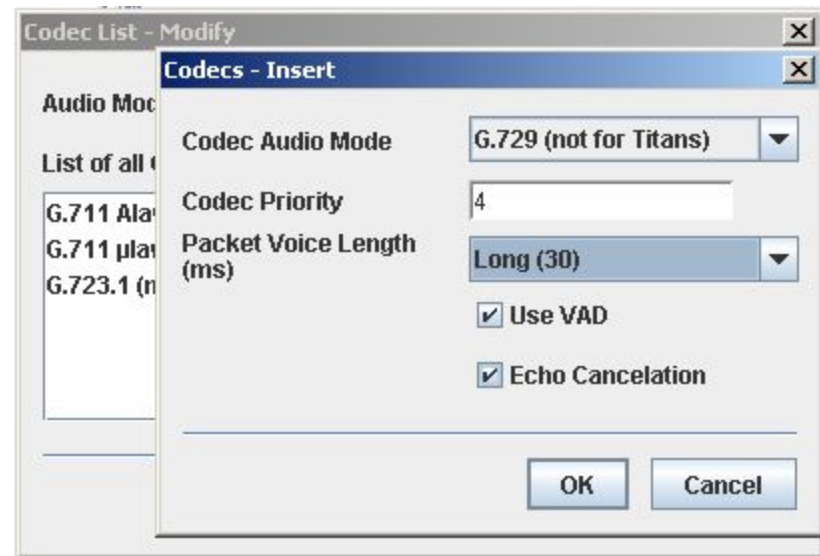
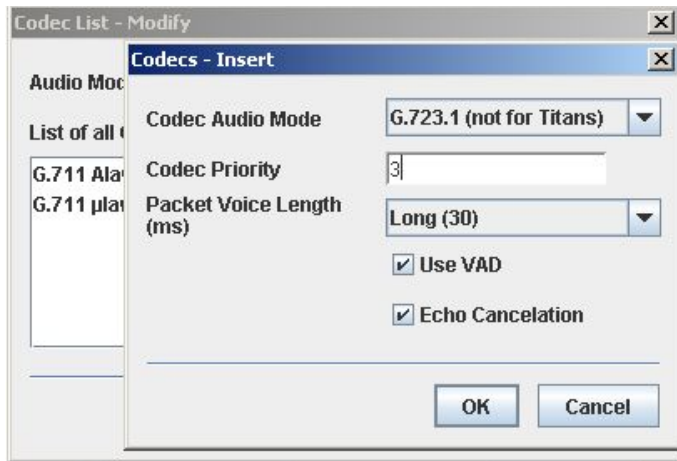
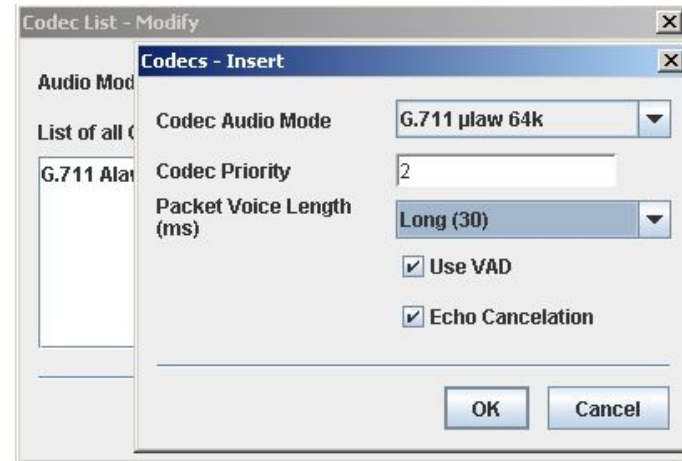
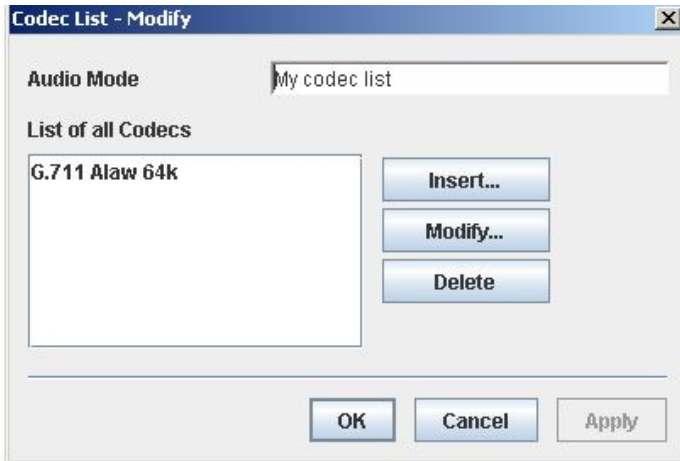
Bearer Capability

Codec List Def Audio Mode   

Tone

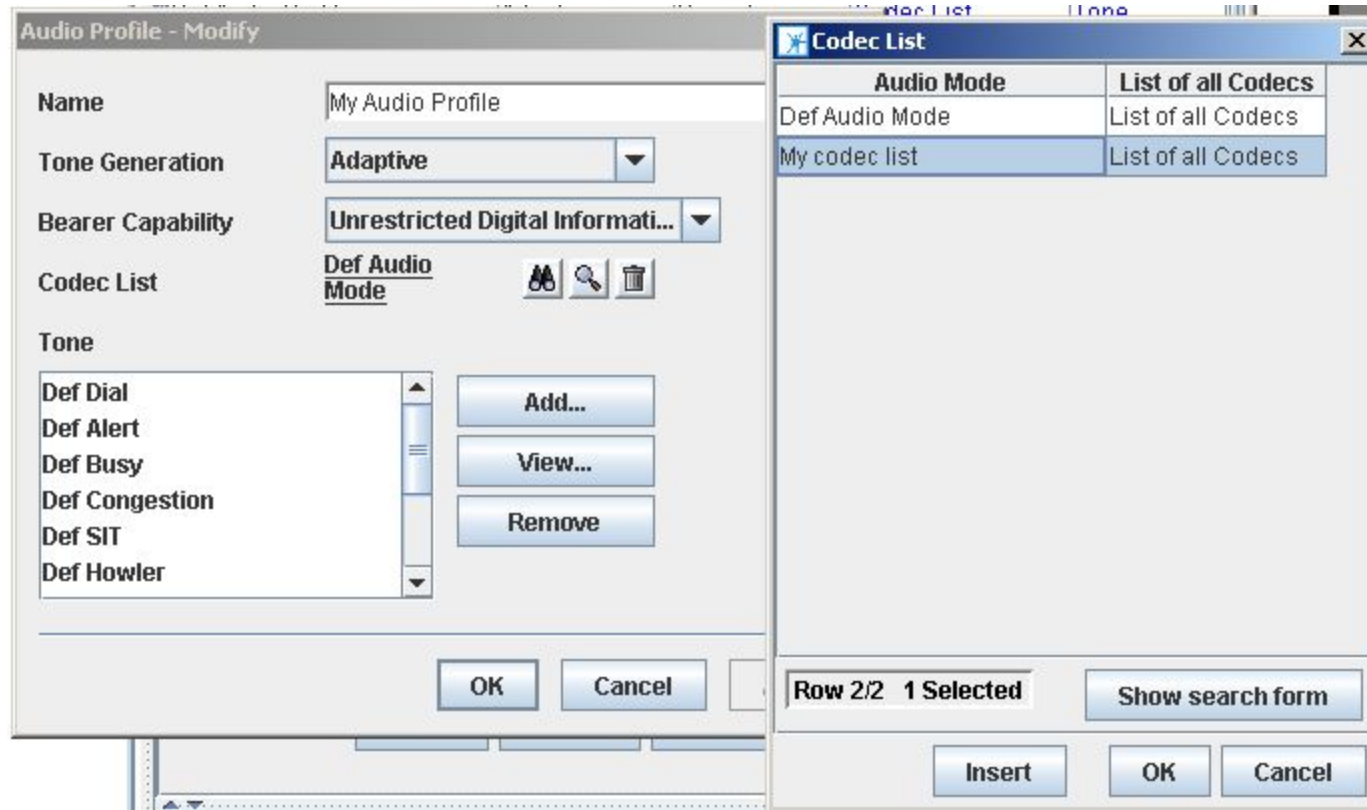
Def Dial	  
Def Alert	
Def Busy	
Def Congestion	
Def SIT	
Def Howler	

•Codec List > Insert



Audio Profile > Modify > My audio profile

Codec List > My codec list



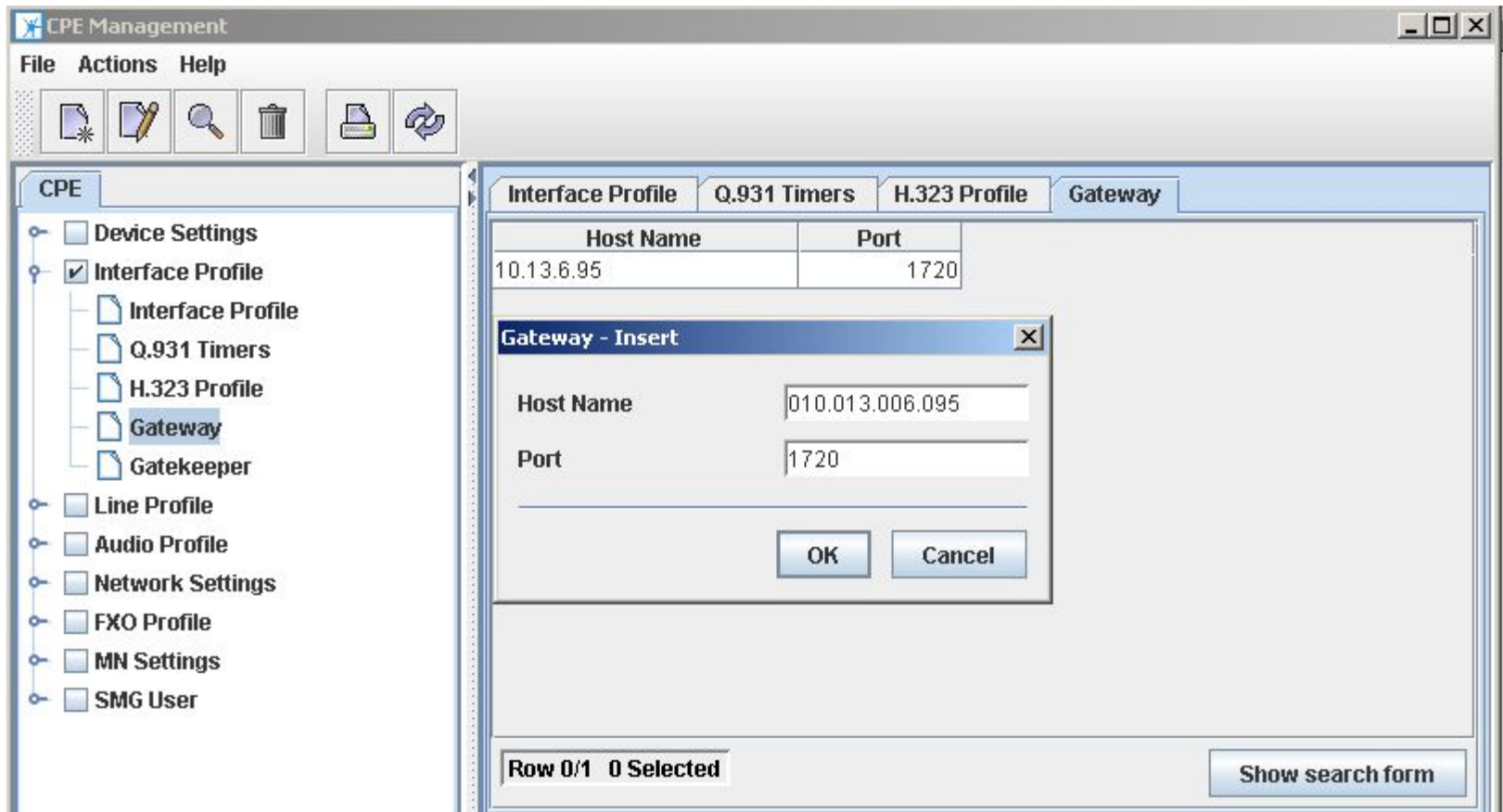
Line Profile

- Line Profile
- Ring Mode
- Analog Line

Interface Profile

- Interface Profile
- Signalling Profile
- Q931 Timers
- H.323
- Gateway
- Gatekeeper

- Gateway > Insert



- H.323 Profile > Insert

The screenshot shows the CPE Management application interface. The main window is titled "H.323 Profile - Insert". The left sidebar shows a tree view with "Interface Profile" selected, and "H.323 Profile" highlighted. The main area contains the following settings:

- Name: My H.323 profile
- Faststart (not for Titans)
- Gatekeeper section:
 - Gatekeeper: [empty]
 - Alternative Gatekeeper: [empty]
 - Retransmission Timer (s): 30
 - Number of Retransmissions: 5
 - Time to Live (s): 30
 - Register As Gateway
 - H.235 Security (not for Tita...)
 - Time Window (s): 10
- Gateway section:
 - Gateway: [empty]
 - Alternative Gateway: [empty]

Overlaid on the main window is a "Gateway" table with the following data:

Host Name	Port
10.13.6.95	1720
10.13.6.95	1720

At the bottom of the Gateway table, it says "Row 2/2 1 Selected" and "Show search form". The "Insert" button is highlighted.

H.323 Profile - Insert



Name

My H.323 profile

Faststart (not for Titans)

Gatekeeper

Gatekeeper



Alternative Gatekeeper



Retransmission Timer (s)

30

Number of Retransmissions

5

Time to Live (s)

30

Register As Gateway

H.235 Security (not for Tita...

Time Window (s)

10

Gateway

Gateway

10.13.6.95



Alternative Gateway



OK


Cancel




•Interface Profile > Insert

Interface Profile - Insert

Name: My Interface Profile

DSS1 Tunneling (not for Titan...

Q.931 Timer Group:   

H.323 Profile:   

OK Cancel

Q.931 Timers

Variant Name	T301	T303
Def Q931 Timer	180	4

H.323 Profile

Name	Faststa...	Retransmissi...N
h.323	true	30
h.323 new	false	30
My H.323 profile	true	30

Row 0/3 0 Selected

Interface Profile - Insert

Name: My Interface Profile

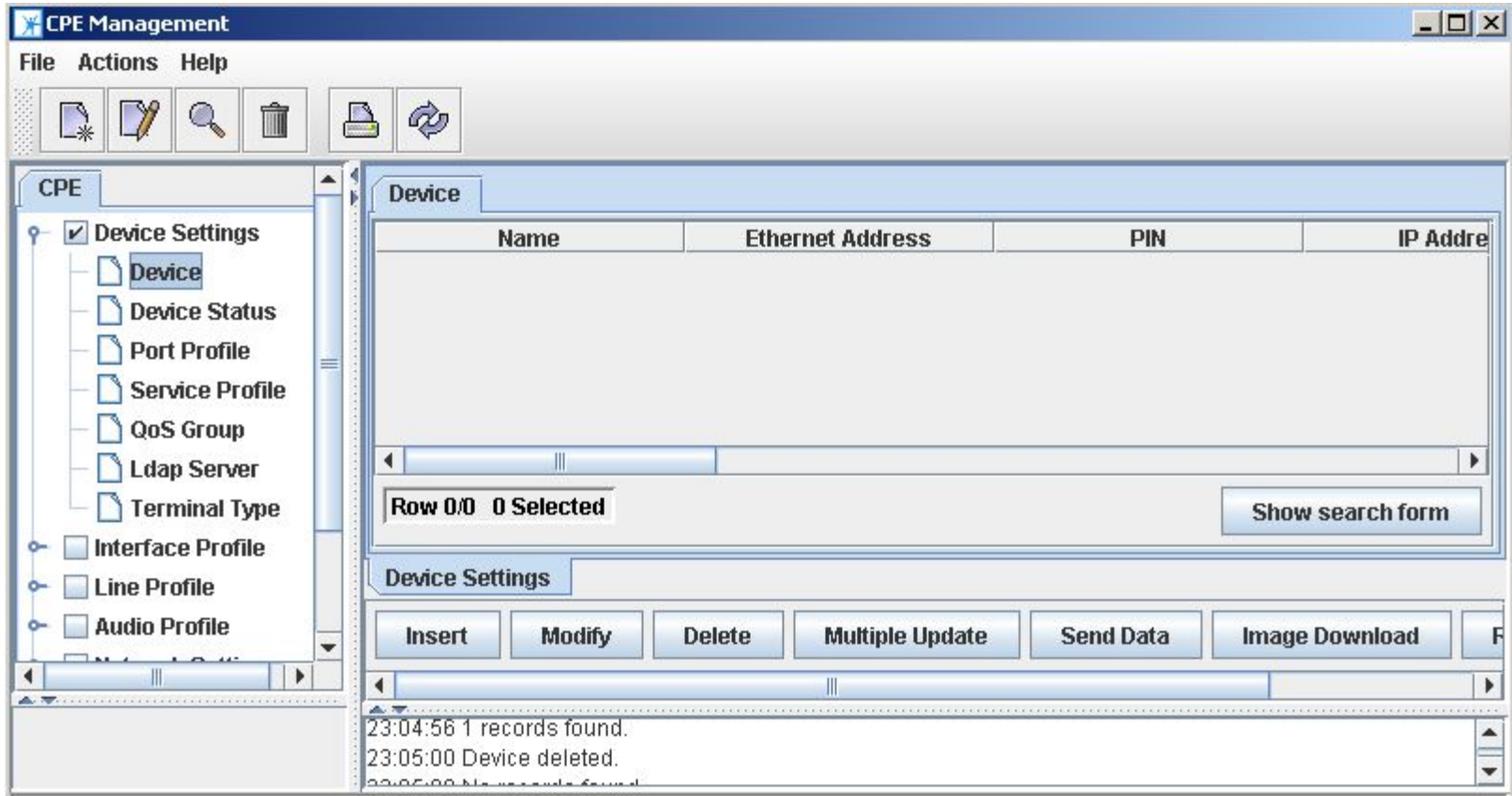
DSS1 Tunneling (not for Titan...

Q.931 Timer Group: Def Q931 Timer   

H.323 Profile: My H.323 profile   

OK Cancel

Check box Device Settings->Device->Insert



Device - Insert X

Device **Registration**

Name

Ethernet Address

PIN

Image Name

Device Type TA102

IP Address

Admin Password

Network Settings Profile

Service Profile

Interface Profile

External Line Profile

Port Profile

Device - Insert X

Device **Registration**

Name

Ethernet Address

PIN

Image Name

Device Type




IP Address

Admin Password

Network Settings Profile My network profile   

Service Profile Def Overlap   

Interface Profile My interface ...   

External Line Profile   

Port Profile

Dialing Numbering Analog Ports of TA-104

Port Profile - Insert

Directory Number: 3109501

Port Number: Line 1

Equipment: Equipped

Terminal Type: Def Terminal ...

OK Cancel

Port Profile - Insert

Directory Number: 3109502

Port Number: Line 2

Equipment: Equipped

Terminal Type: Def Terminal ...

OK Cancel

Port Profile - Insert

Directory Number: 3109503

Port Number: Line 3

Equipment: Equipped

Terminal Type: Def Terminal ...

OK Cancel

Port Profile - Insert

Directory Number: 3109504

Port Number: Line 4

Equipment: Equipped

Terminal Type: Def Terminal ...

OK Cancel

Final configuring TA-104

Device - Insert

Device Registration

Name: My TA-104

Ethernet Address: 00-D0-50-20-05-74

PIN:

Image Name: ta6012.ld

Device Type: TA104

IP Address: 010.013.006.090

Admin Password:

Network Settings Profile: My network profile

Service Profile: Def Overlap

Interface Profile: My interface ...

External Line Profile:

Port Profile:

- Line 1; 3109501
- Line 2; 3109502
- Line 3; 3109503
- Line 4; 3109504

Insert...

Modify...

Delete

OK Cancel