



Network Camera

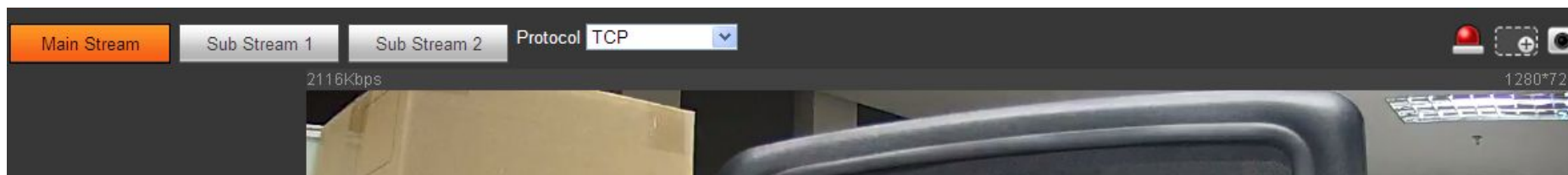
Latest Firmware feature

--
2014.2



□ Latest Version-- V2.400.0001

- Three streams, one mainstream and two substreams
- No clip between mainstream and substreams
- Multiple nonrectangular areas motion detection with different colors
- JPG playback and video cut supported
- Corridor Mode
- Illegal access supported
- NAS supported
- Multiple Browsers supported
- Onvif profile S V13.06 test tool passed
- Onvif authentication supported
- PSIA supported
- New API protocol V1.37
- Dahua Digital Signature(Dahua firmware only)
- Add location and picture overlay in Overlay



Main Stream	Sub Stream
Code-Stream Type: General	<input checked="" type="checkbox"/> Enable
Encode Mode: H.264	Code-Stream Type: Sub Stream 1
Resolution: 720P (1280*720)	Code-Stream Type: Sub Stream 2
Frame rate(FPS): 25	Encode Mode: H.264
Bit Rate Type: CBR	Resolution: CIF (352*288)
Reference Bit Rate: 448-8192Kb/S	Frame rate(FPS): 25
Bit Rate: 2048	Bit Rate Type: CBR
	Reference Bit Rate: 56-1024Kb/S
	Bit Rate: Customized

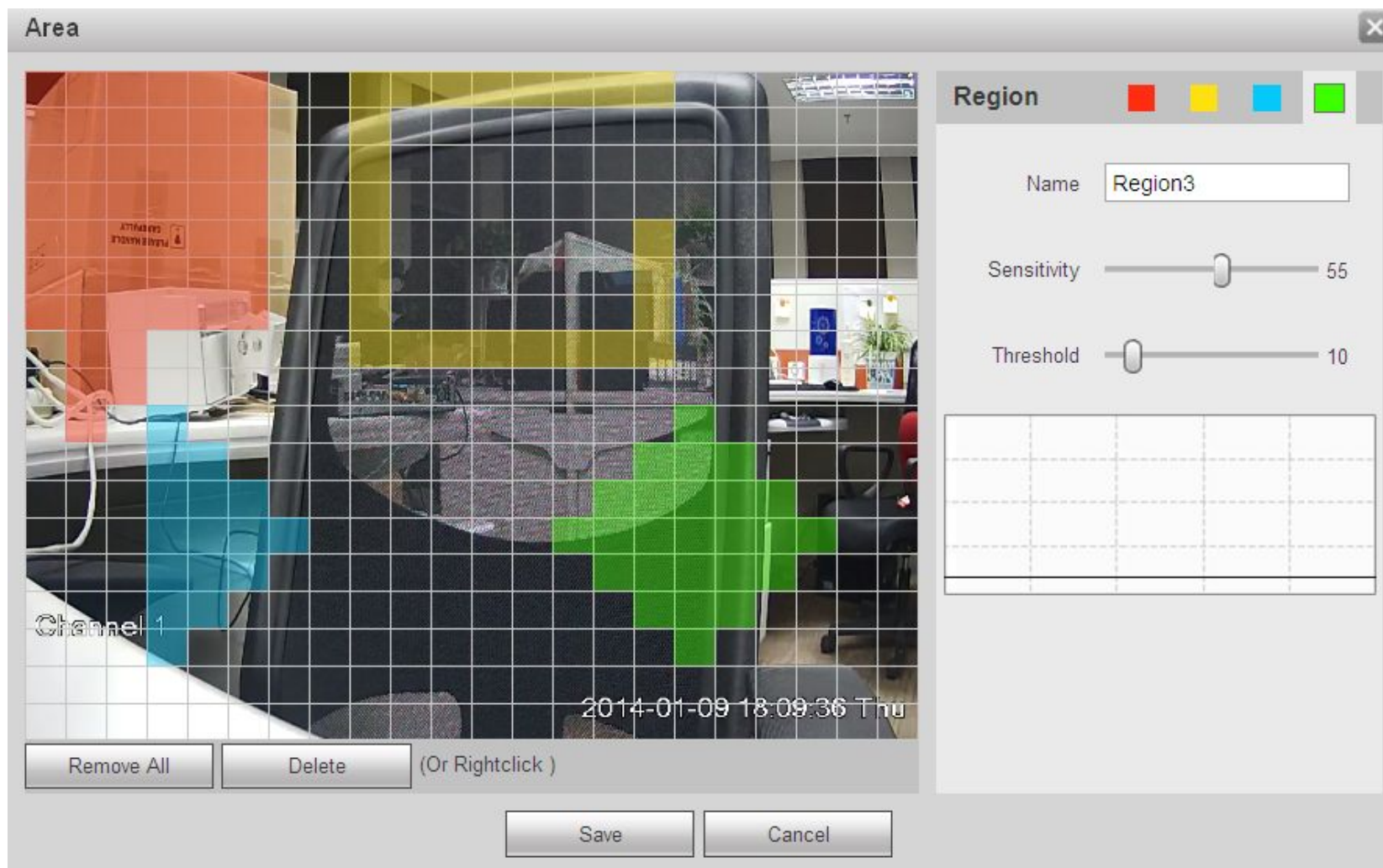
- One mainstream and two substreams can be chosen at live page
- Set different resolution, frame rate, encode mode at setup page

1.3MP
mainst
ream

D1
substre
am1

720P
substre
am2





Area

Channel 1

2014-01-09 18:09:36 Thu

Remove All Delete (Or Rightclick)

Save Cancel

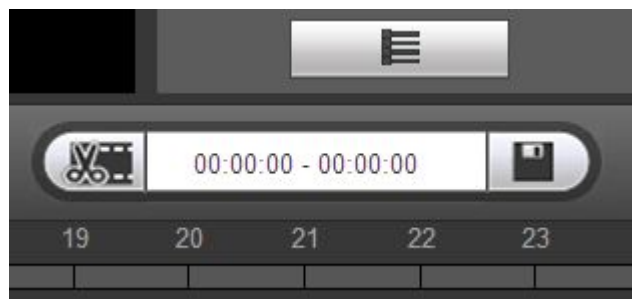
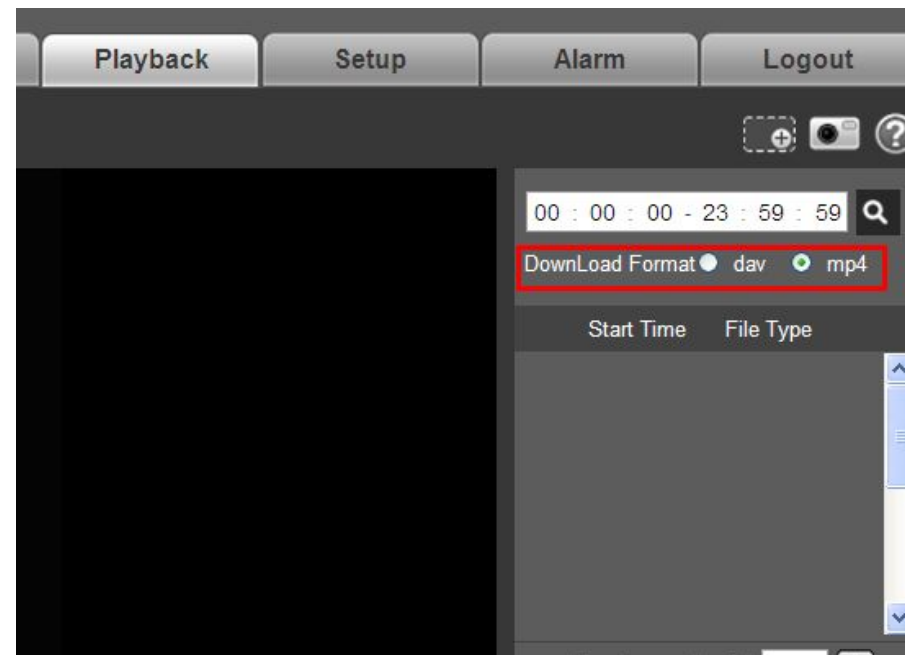
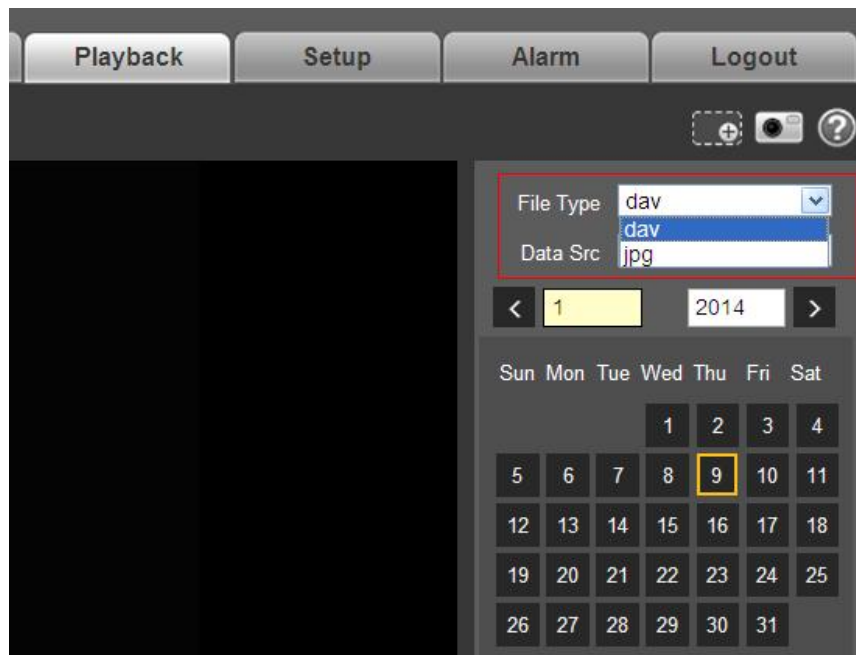
Region

Name

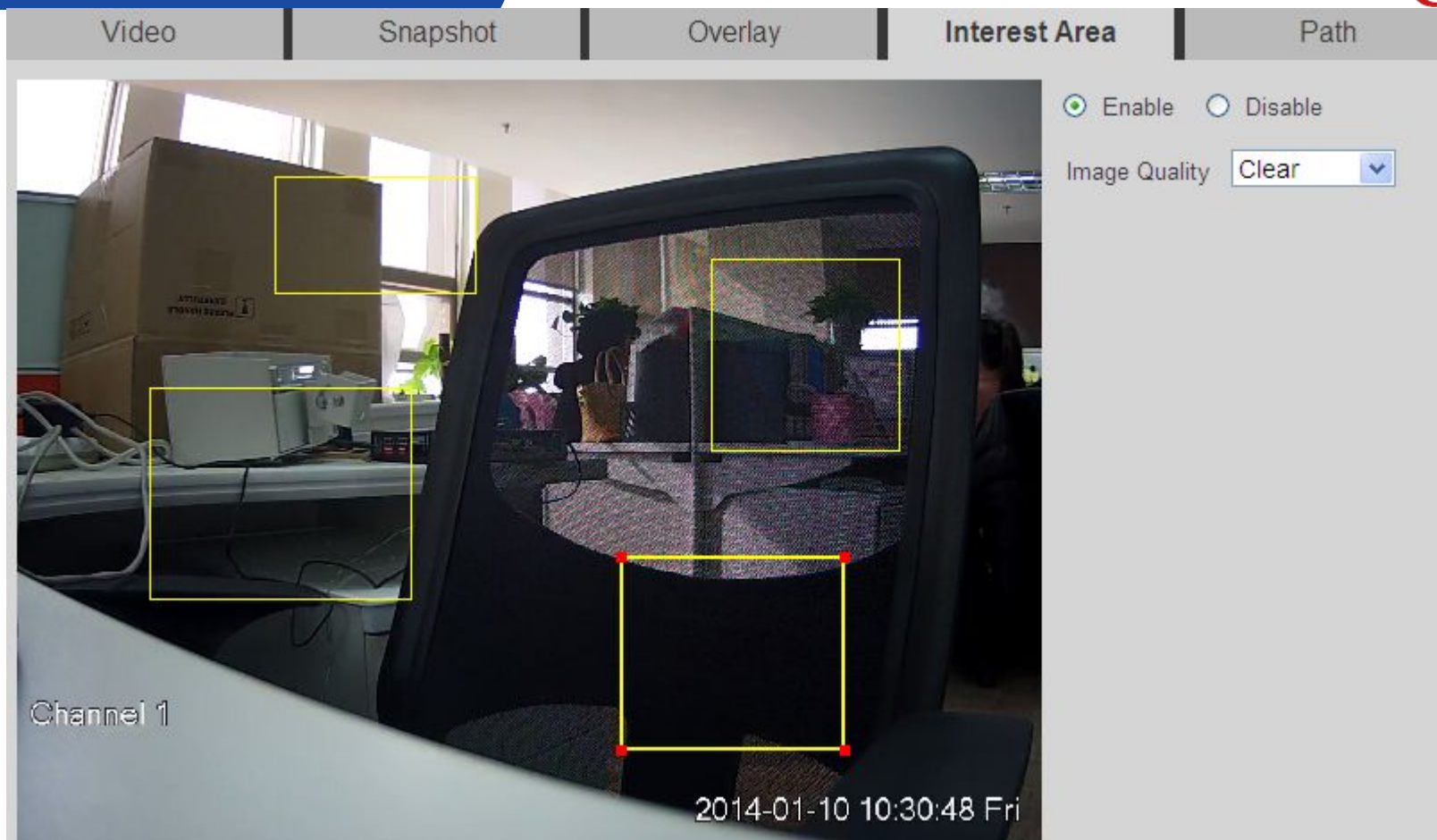
Sensitivity

Threshold

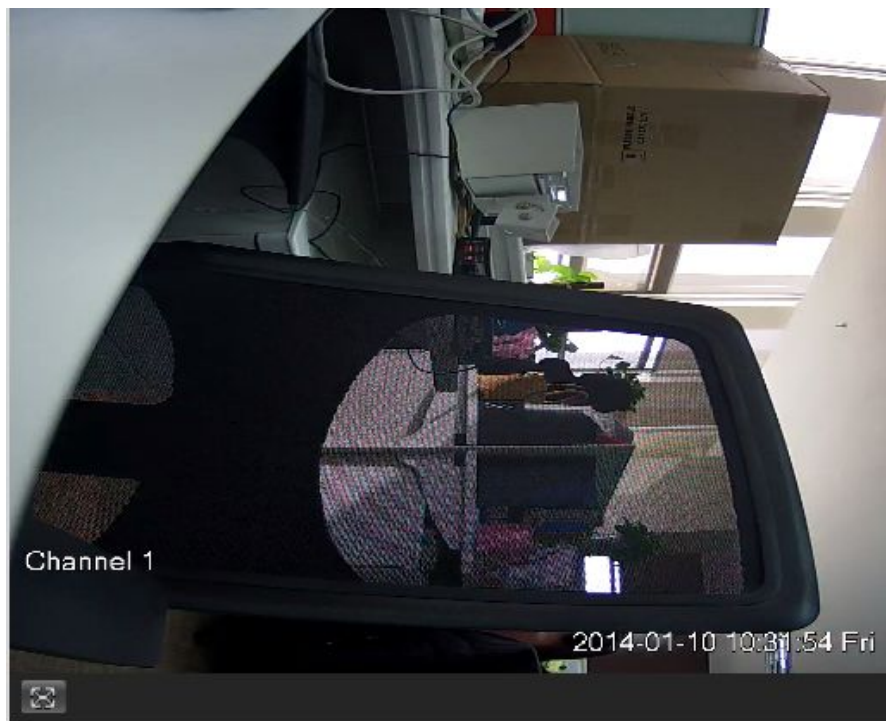
- 4 independent nonrectangular detection areas with different colors
- Each area has independent parameters, including name, sensitivity, threshold.
- Each region's name will shown in the log when motion occurs.



- Not only play the record but also the jpg on the browser from the SD card
- Download the picture from the local storage
- Choose the download format
- Support video cut
- Digital zoom in and snapshot when playback



- Set 4 regions of interest, only in the mainstream
- Choose the video in ROI fuzzy or sharp



Default Cancel Save

Profile Day

Brightness

Contrast

Saturation

Sharpness

Gamma

Anti-flicker Outdoor 50Hz 60Hz

Exposure Auto

Auto Iris ON OFF

White Balance Auto

Day & Night Auto

Sensitivity Middle

Delay

BLC Mode OFF

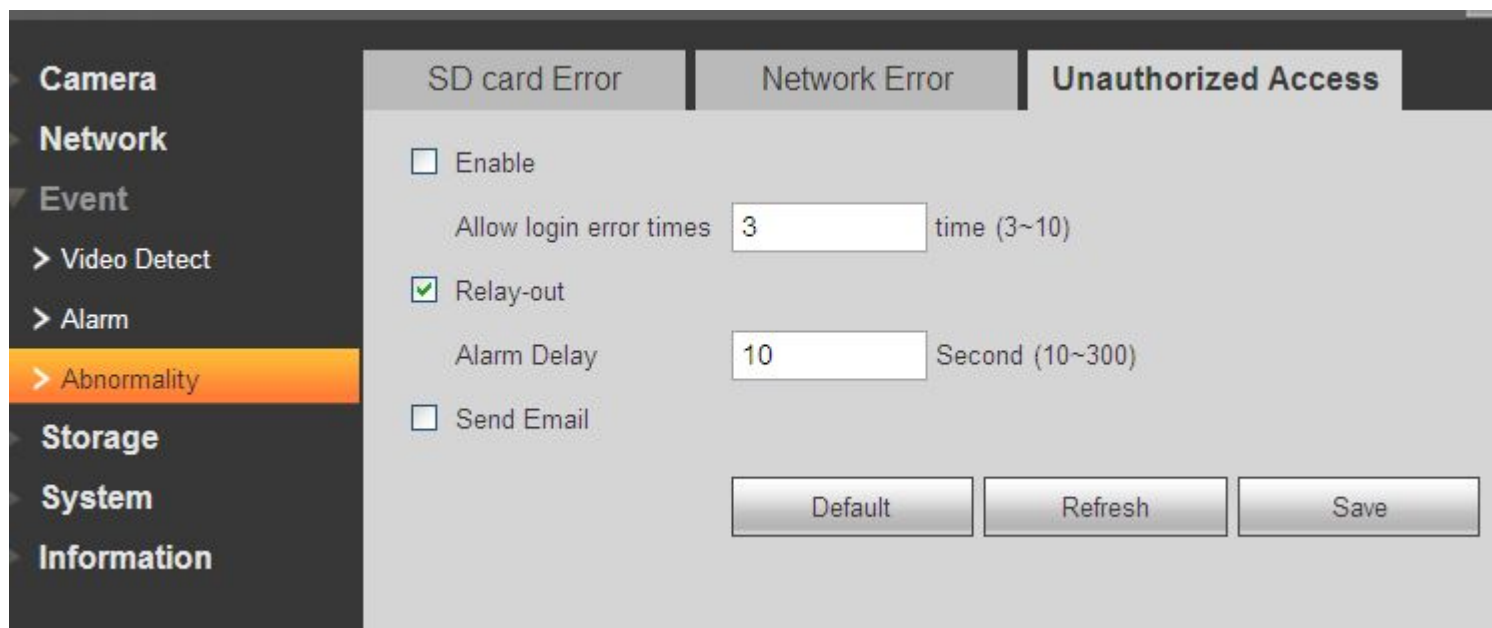
3D NR ON OFF

3D NR Level

Mirror ON OFF

Flip Clockwise 90°

- Support the corridor mode when clockwise 90°



The screenshot shows the 'Unauthorized Access' configuration page in the Dahua web interface. The left sidebar contains a navigation menu with categories: Camera, Network, Event, Video Detect, Alarm, Abnormality (highlighted), Storage, System, and Information. The main content area has three tabs: 'SD card Error', 'Network Error', and 'Unauthorized Access'. Under the 'Unauthorized Access' tab, there are several settings:

- Enable
- Allow login error times: time (3~10)
- Relay-out
- Alarm Delay: Second (10~300)
- Send Email

At the bottom of the settings area, there are three buttons: 'Default', 'Refresh', and 'Save'.

- Set the allowance times for login error
- Choose the activities when alarm occurs

Camera
Network
Event
Storage
Schedule
Destination

Path Local FTP NAS

Enable

Server Address

Remote directory

Default Refresh Save

Path Local FTP

Record

Event Type	Scheduled	Motion Detect	Alarm
Local	<input type="checkbox"/>	<input type="checkbox"/>	<input type="checkbox"/>
FTP	<input type="checkbox"/>	<input type="checkbox"/>	<input type="checkbox"/>
NAS	<input checked="" type="checkbox"/>	<input checked="" type="checkbox"/>	<input checked="" type="checkbox"/>

- Support NAS, provide the third way to storage besides SD Card and FTP
- Send record and snapshot to the NAS server

Key feature

- **Take extra-stream snapshot**
- **Holiday schedule setting**
- **NAS setting**
- **Software version query**
- **Set location in Overlay**



Onvif profile S conformance passed

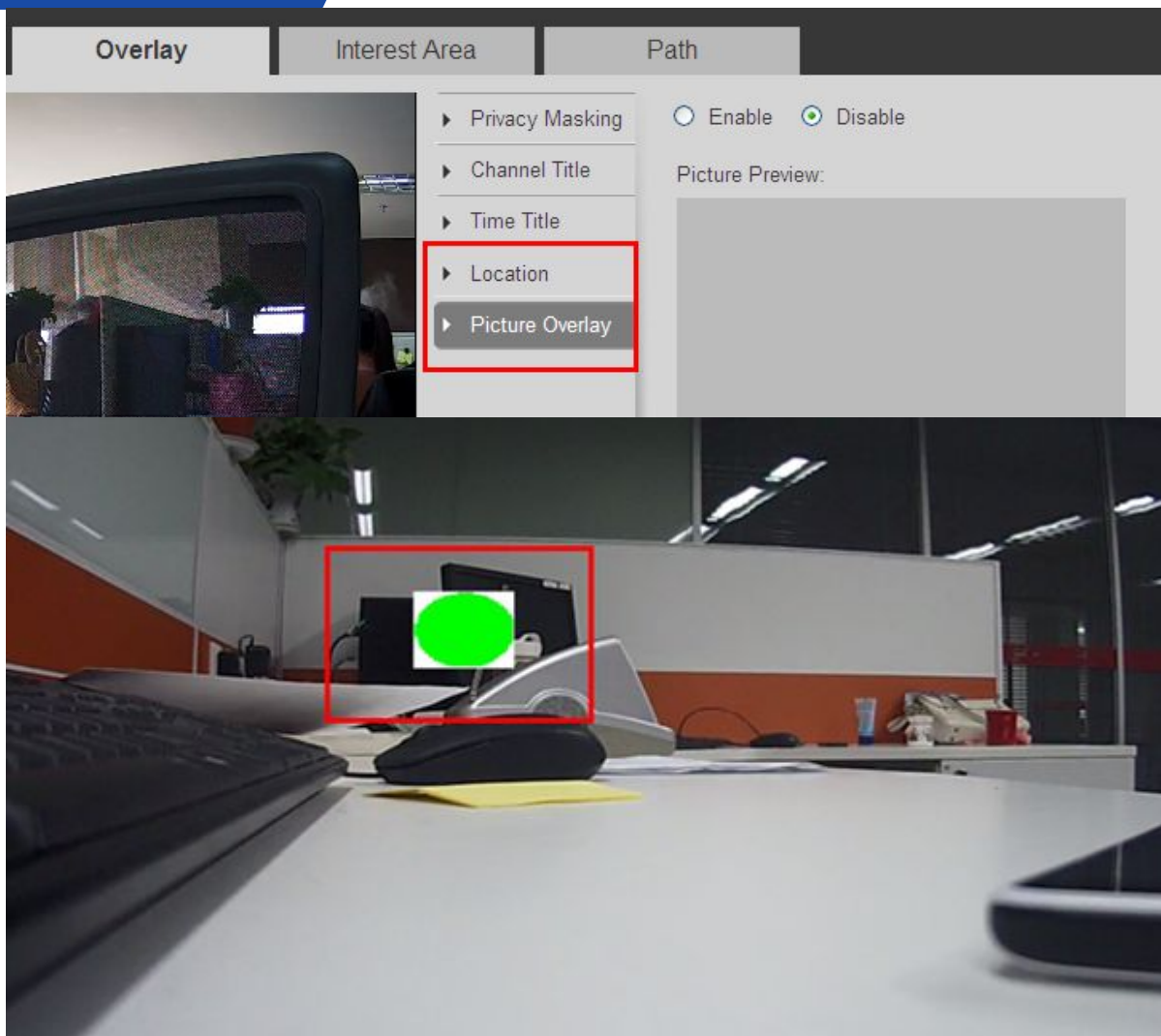
- **Support camera setting**
- **Motion detection**
- **Device capacity detection**
- **Integration with most of software platforms easier**
- **V13.06 test tool passed**
- **Onvif version 2.3**



Do not active the alarm from explorer that our firmware isn't trusted.

Support IE7, IE8, IE9, IE10 and Chrome , Firefox

Support windows 8, MAC, Linux(Linux activeX need to be updated seperately)



- Support location and picture in Overlay tab

Setup

Brightness + 50

Contrast + 50

Saturation + 50

Sharpness + 50

Gamma + 50



Brightness + 50

Contrast + 50

Saturation + 50

Sharpness + 50

Gamma + 1

Day & Night

Sensitivity

Delay + 2



Day & Night

D&N Sensitivity

D&N Delay

3D NR ON OFF

3D NR Level + 50

Mirror ON OFF

Flip



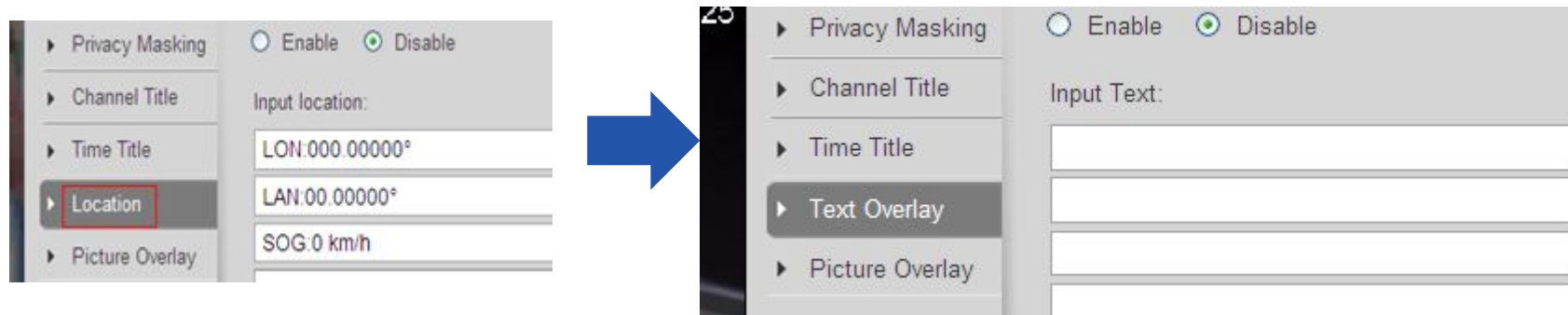
Mirror ON OFF

Flip

3D NR ON OFF

3D NR Level + 50

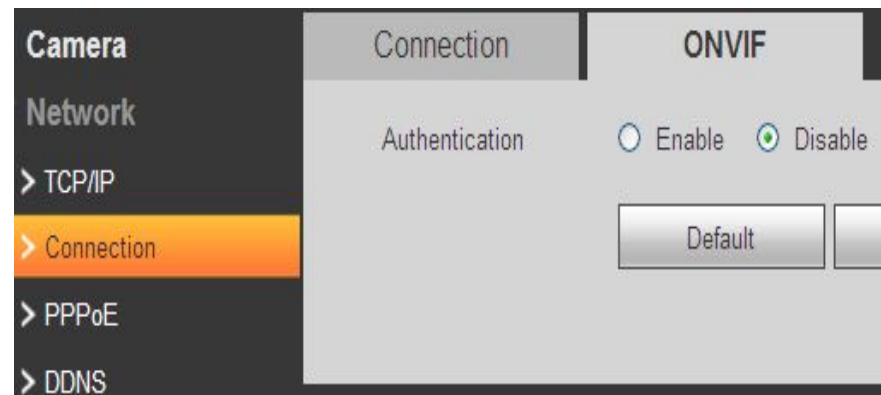
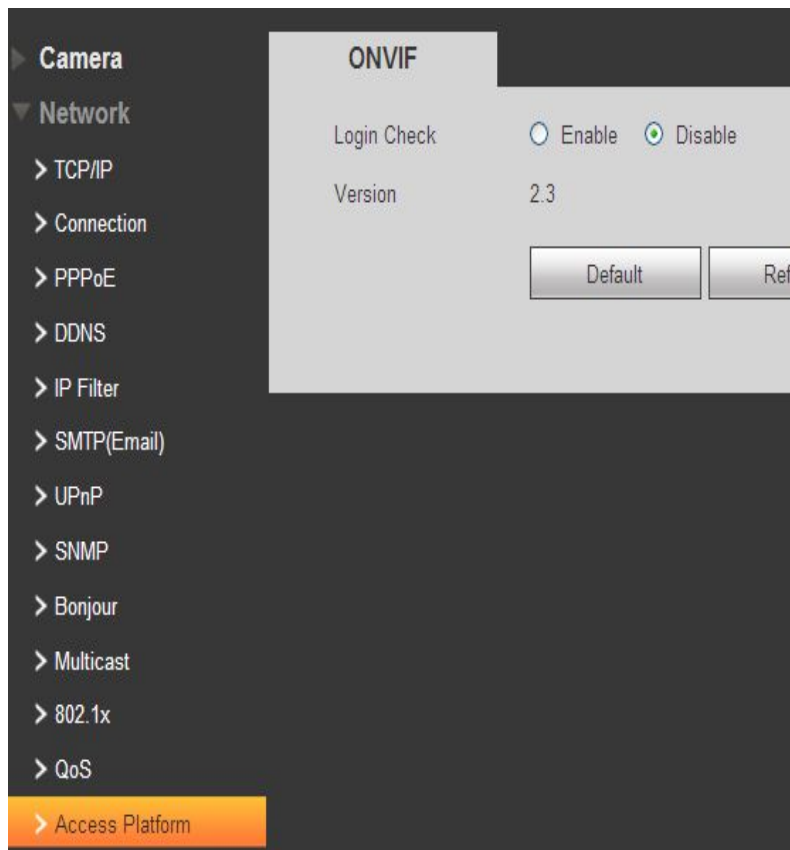
Video



Video	Snapshot	Overlay	Interest Area	Path
Monitor Snapshot	C:\Documents and Settings\21835\WebDownload	LivePicture		Browse...
Monitor Record	C:\Documents and Settings\21835\WebDownload	LiveRecord		Browse...
Playback Snapshot	C:\Documents and Settings\21835\WebDownload	PlayBackPicture		Browse...
Playback Download	C:\Documents and Settings\21835\WebDownload	PlayBackRecord		Browse...
Playback Cut	C:\Documents and Settings\21835\WebDownload	PlayBackRecordCu		Browse...

Video	Snapshot	Overlay	Path
Live Snapshot	C:\Documents and Settings\21835\WebDownload\LiveSnapshot		
Live Record	C:\Documents and Settings\21835\WebDownload\LiveRecord		
Playback Snapshot	C:\Documents and Settings\21835\WebDownload\PlaybackSnapshot		
Playback Download	C:\Documents and Settings\21835\WebDownload\PlaybackRecord		
Video Clips	C:\Documents and Settings\21835\WebDownload\VideoClips		

Network



If enable, you must type in the right username and password to connect our devices via ONVIF

Event

Region ■ ■ ■ ■

Name



Region ■ ■ ■ ■

Name

SD card Error | Network Error | Unauthorized Access

No SD Card

Enable

Relay-out

Alarm Delay Second (10~300)

Send Email

Capacity Warning

Enable

Capacity Limit %(0~99)

Relay-out

Alarm Delay Second (10~300)

Send Email

SD Card Error

Enable

Relay-out

Alarm Delay

Send Email



SD Card | Network

Event Type

Enable

Relay-out

Alarm Delay Second (10~3

Send Email

(Dropdown menu options: No SD Card, No SD Card, SD Card Error, Capacity Warning)

Event

SD card Error | **Network Error** | Unauthorized Access

Disconnection | IP Conflict

Enable Enable

Record Record

Record Delay 10 Second (10~300) Record Delay

Relay-out Relay-out

Alarm Delay 10 Second (10~300) Alarm Delay

Default Refresh Save



SD Card | **Network** | IP Conflict

Event Type Disconnection

Enable Record

Record Delay 10 Second (10~300)

Relay-out

Alarm Delay 10 Second (10~300)

SD card Error | Network Error | **Unauthorized Access**

Enable

Allow login error times 3 time (3~10)

Relay-out

Alarm Delay 10 Second (10~300)

Send Email

Default Refresh Save



SD Card | Network | **Illegal Access**

Enable

Login Error 3 time (3~10)

Relay-out

Alarm Delay 10 Second (10~300)

Send Email

Day & Night

Sensitivity

Delay 2



Day & Night

D&N Sensitivity

Privacy Masking Enable Disable

Channel Title Input location:

Time Title

Location

Picture Overlay



25

Privacy Masking Enable Disable

Channel Title Input Text:

Time Title

Text Overlay

Picture Overlay

SD card Error | Network Error | **Unauthorized Access**

Enable

Allow login error times time (3~10)

Relay-out

Alarm Delay Second (10~300)

Send Email

Default Refresh Save



SD Card | Network | **Illegal Access**

Enable

Login Error time (3~10)

Relay-out

Alarm Delay Second (10~300)

Send Email

Path	Local	FTP	NAS
<input type="checkbox"/> Enable			
Server Address	<input type="text"/>		
Remote directory	<input type="text"/>		



Path	Local	FTP	NAS
Enable			
Server Address	<input type="text"/>		
Remote Directory	<input type="text"/>		

Video	Snapshot	Overlay	Interest Area	Path
Monitor Snapshot	C:\Documents and Settings\21835\WebDownload	LivePicture		<input type="button" value="Browse..."/>
Monitor Record	C:\Documents and Settings\21835\WebDownload	LiveRecord		<input type="button" value="Browse..."/>
Playback Snapshot	C:\Documents and Settings\21835\WebDownload	PlayBackPicture		<input type="button" value="Browse..."/>
Playback Download	C:\Documents and Settings\21835\WebDownload	PlayBackRecord		<input type="button" value="Browse..."/>
Playback Cut	C:\Documents and Settings\21835\WebDownload	PlayBackRecordCu		<input type="button" value="Browse..."/>



Video	Snapshot	Overlay	Path
Live Snapshot	C:\Documents and Settings\21835\WebDownload\LiveSnapshot		
Live Record	C:\Documents and Settings\21835\WebDownload\LiveRecord		
Playback Snapshot	C:\Documents and Settings\21835\WebDownload\PlaybackSnapshot		
Playback Download	C:\Documents and Settings\21835\WebDownload\PlaybackRecord		
Video Clips	C:\Documents and Settings\21835\WebDownload\VideoClips		

- **HX5xxx series:**
HDB(W)5100、HDB(W)5200、HF5100、HF5200、HFW5100C、
HFW5200C、HFW5200-IRA、HFW5100-IRA、HFW5200D 、HFW5100D
- **HX4xxx series:**
HFW4100S、HFW4200S、HFW4300S、HDW4100S、HDW4200S、
HDW4300S、HDB4100C、HDB4200C、HDB4300C



THANK YOU!

www.dahuasecurity.com