


AVIATION COMPANY ELERON



Air Cargo Transportation

A decorative graphic consisting of numerous thin, white, curved lines that originate from the left side of the frame and fan out towards the right, creating a sense of motion and depth against the solid blue background.

This is the great honor for us to present you the air company ELERON (hereinafter referred to as the air company), which provides services in air cargo transportation.

With the wide range of products and services specially adapted to the different requirements of our customers, we can provide a high level of safety and service, while continuing to offer cost-effective solutions for the cargo freight.

Our company guarantees the safety, reliability and timely delivery of goods in CIS regions, EU and Asia.

Eleron – company you can trust in!

Historical background

Spring 2018 company start

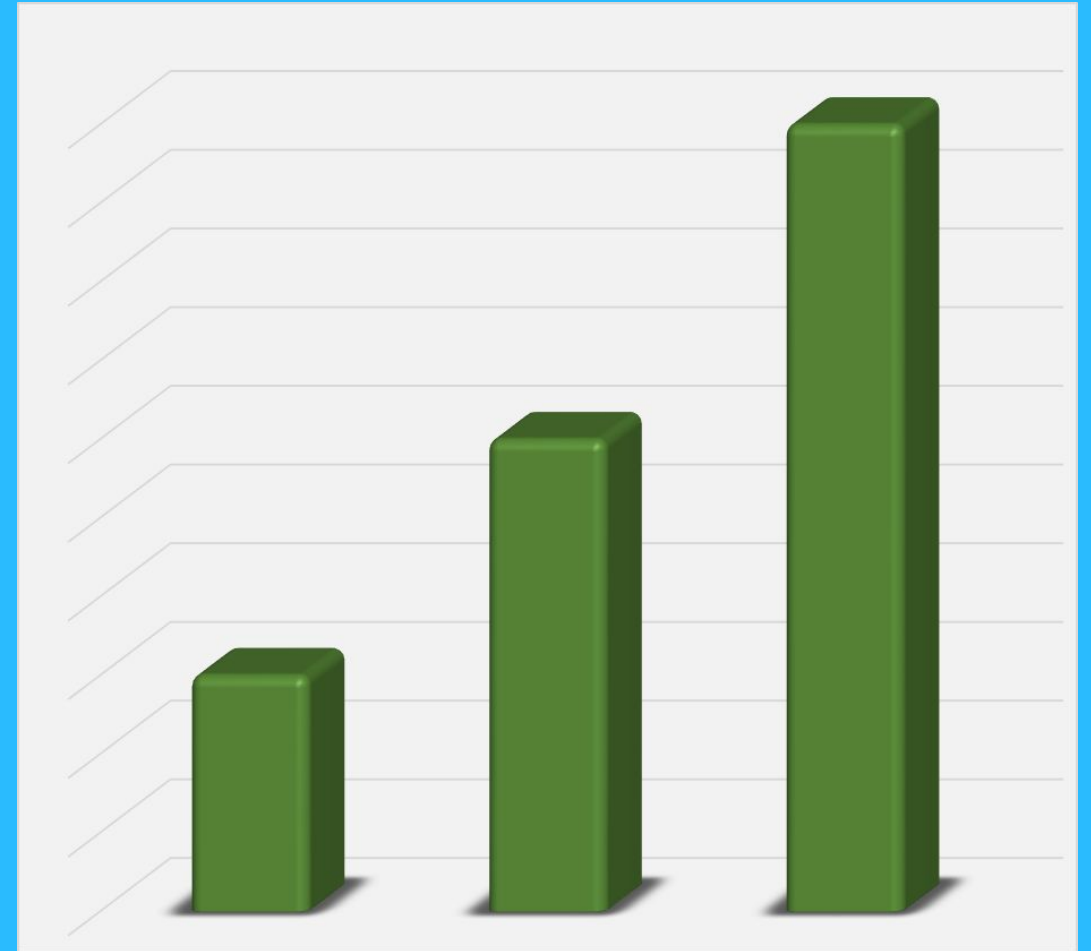
Summer 2018 Fleet start (An-26) – 2 units

Autumn 2018 AOC Certification

Summer 2019:

- ISO 9001:2015 Certification;
- Fleet upgrade with B 737-300 – 3 units

Winter 2019 fleet extension (An-26) – 6 units



Financial background

Spring 2018 company start

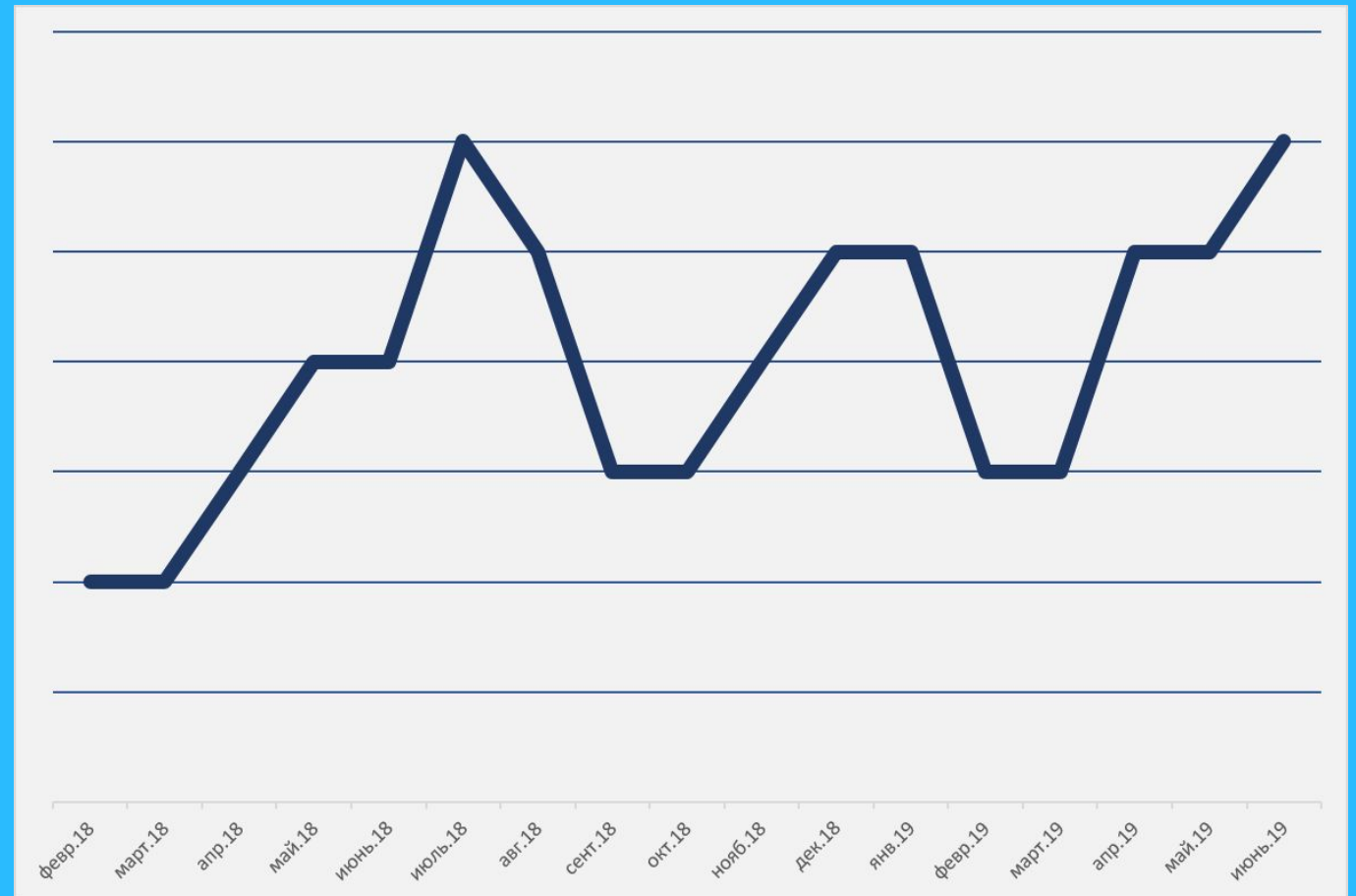
Summer 2018 Fleet start
(An-26) – 2 units

Autumn 2018 AOC Certification

Summer 2019:

- ISO 9001:2015 Certification;
- Fleet upgrade with
B 737-300 – 3 units

Winter 2019 fleet extension
(An-26) – 6 units

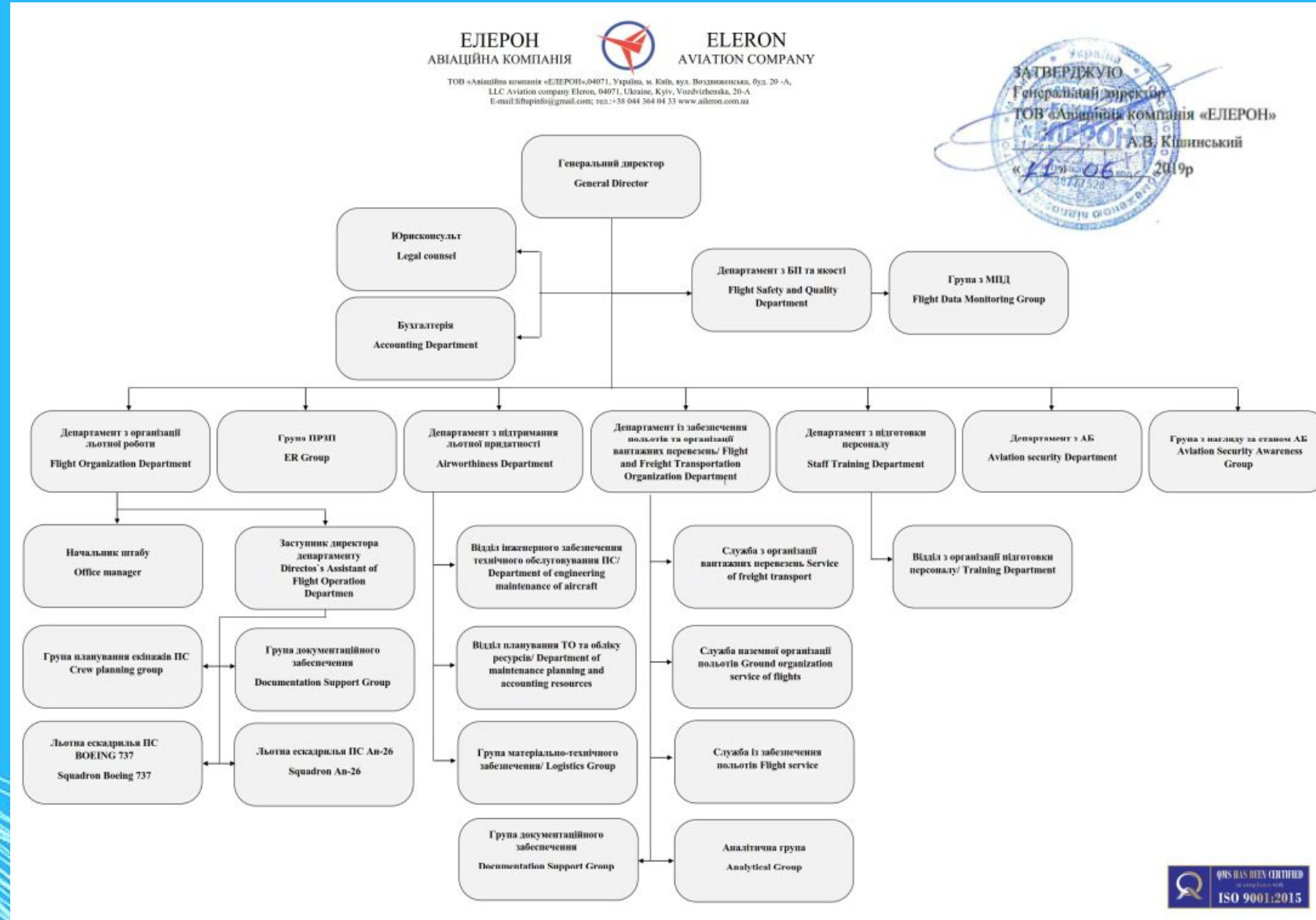


Staff background

Our team is young but experienced.

It consist of:

- 21 crew;
- 43 engineers and mechanics;
- 12 flight dispatcher;
- 11 Top managers.



Development plans

The main airport of our air company's basing is International Airport Rivne.

Our company is developing international airport Rivne with:

- Full airport infrastructure upgrade;
- MRO for An-26; B-737; A-320;
- Cargo storage (stock) for cargo transit;
- Ground handling company for An-26; B-737; A-320; B-767; B-747.



AN - 26

MTOW - 24 000 kg

Zero fuel weight 15 850 kg

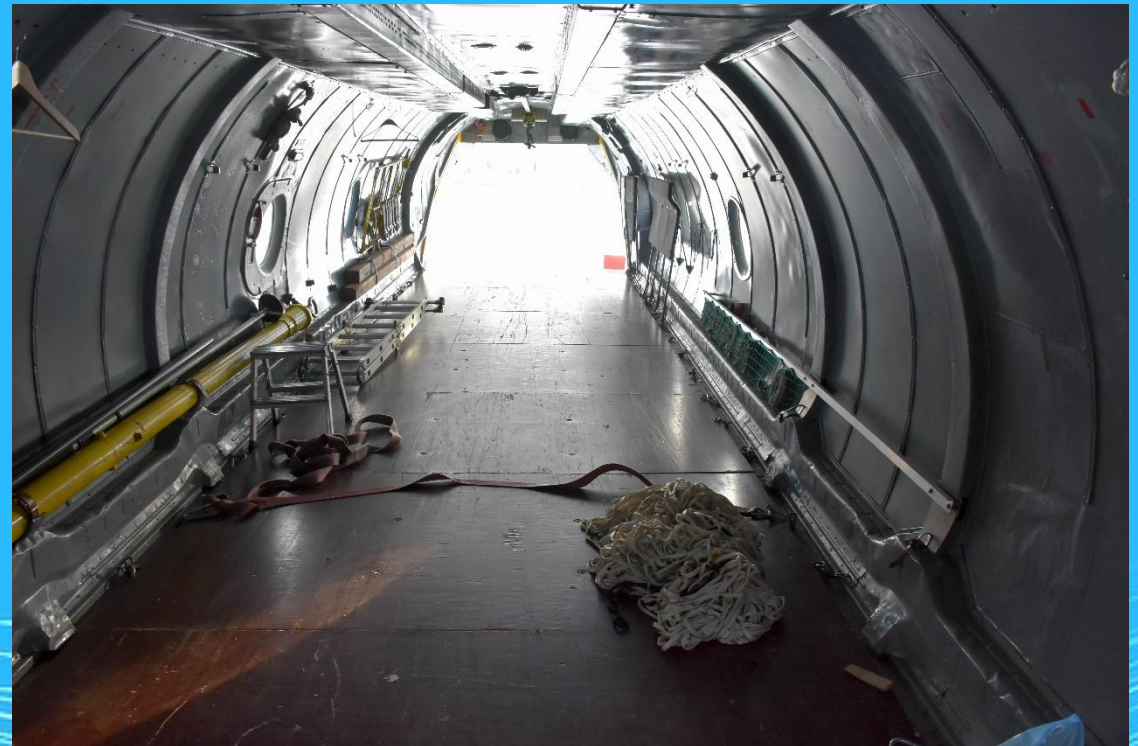
Fuel capacity - 5500 kg

Flight range - 1200 km

Overflight - 5000 km

Loading capacity 5500 kg

Dimension of ramp –
1,6m x 2,3m x 11m



Boeing 737 – 300

MTOW - 63300kg

MLW - 19000kg

Zero fuel weight 30800kg

Fuel capacity - 20 000 ltrs (16 tons)

Flight range - 3800 km

Flight overflight - 5000 km

Loading container 10+1 (dimension
96 x 125)

Dimension of Side Cargo door - 2.16 m
x 3.48m or 85x137 inch



Geographical background

Our company operates regular and charter flights in CIS, EU, ME and Asia regions.

In 2019-2020 our company plans to connect Ukraine with USA, Canada and Africa with cargo traffic.

