

◆ LIMO ◆
STRATEGIC TRADING

A decorative flourish consisting of two stylized, symmetrical scroll-like elements that meet at a central point, positioned below the main title.

UNDERSTANDING THE MARKET MOVEMENT

Advance BBMA

- Multiple Time Frame - Ema50 Re-entry situation

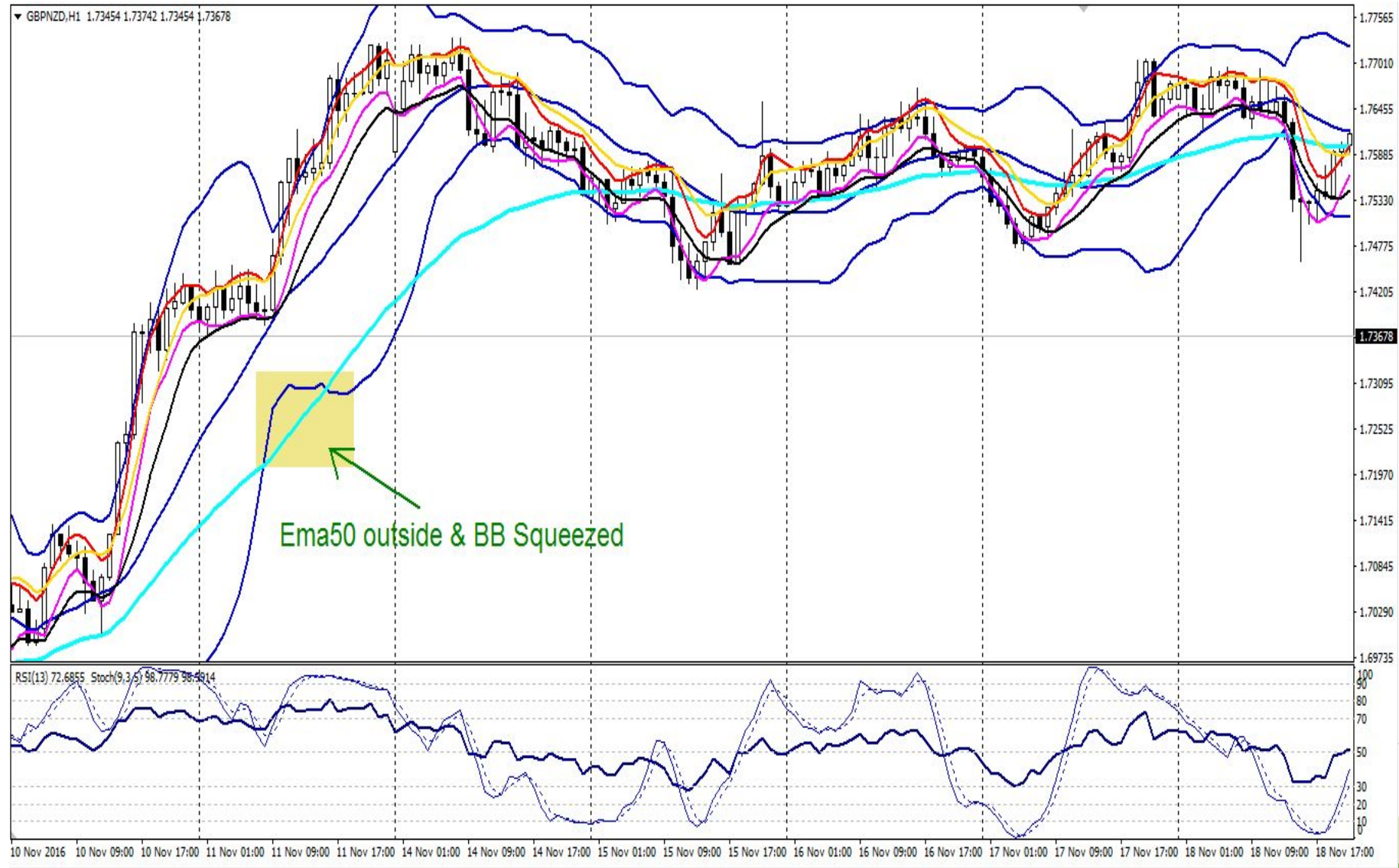
Ema50 is a strong indicator for Trend, can be down or uptrend. In advance BBMA, we can use BB and Ema50 as a Re-entry signal

- BBEMA - is a Re-entry situation, to see it, we use only TWO time frames

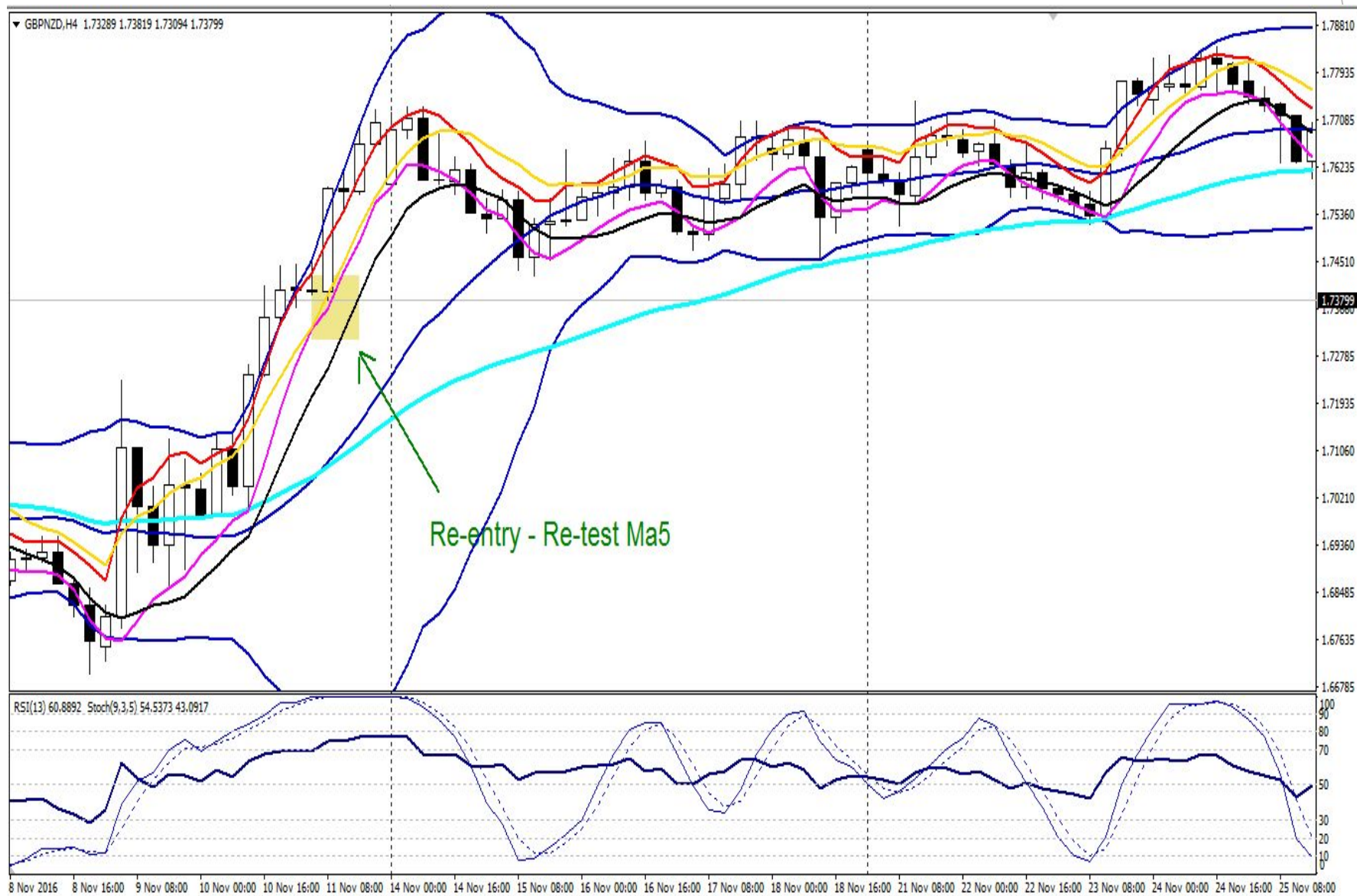
- There's 3 Re-entry BBEMA situations

1. When BB squeeze/declines and Ema50 goes completely outside the BB, it implies a Re-entry on the bigger TF
2. When BB squeeze/declines and Ema50 is closer to the BB and is inside, it implies a Re-entry on the bigger TF
3. When BB is Horizontal and Ema50 is outside and near/parallel to it, it implies a Re-entry on the bigger TF. On this one, one or two cs's Re-tests Ema50 outside
 - Ema50 above cs, Re-entry sell
 - Ema50 below cs, Re-entry buy
 - Low BB for buy Re-entry
 - High BB for Sell Re-entry

Situation 1 BBEMA - H1 TF



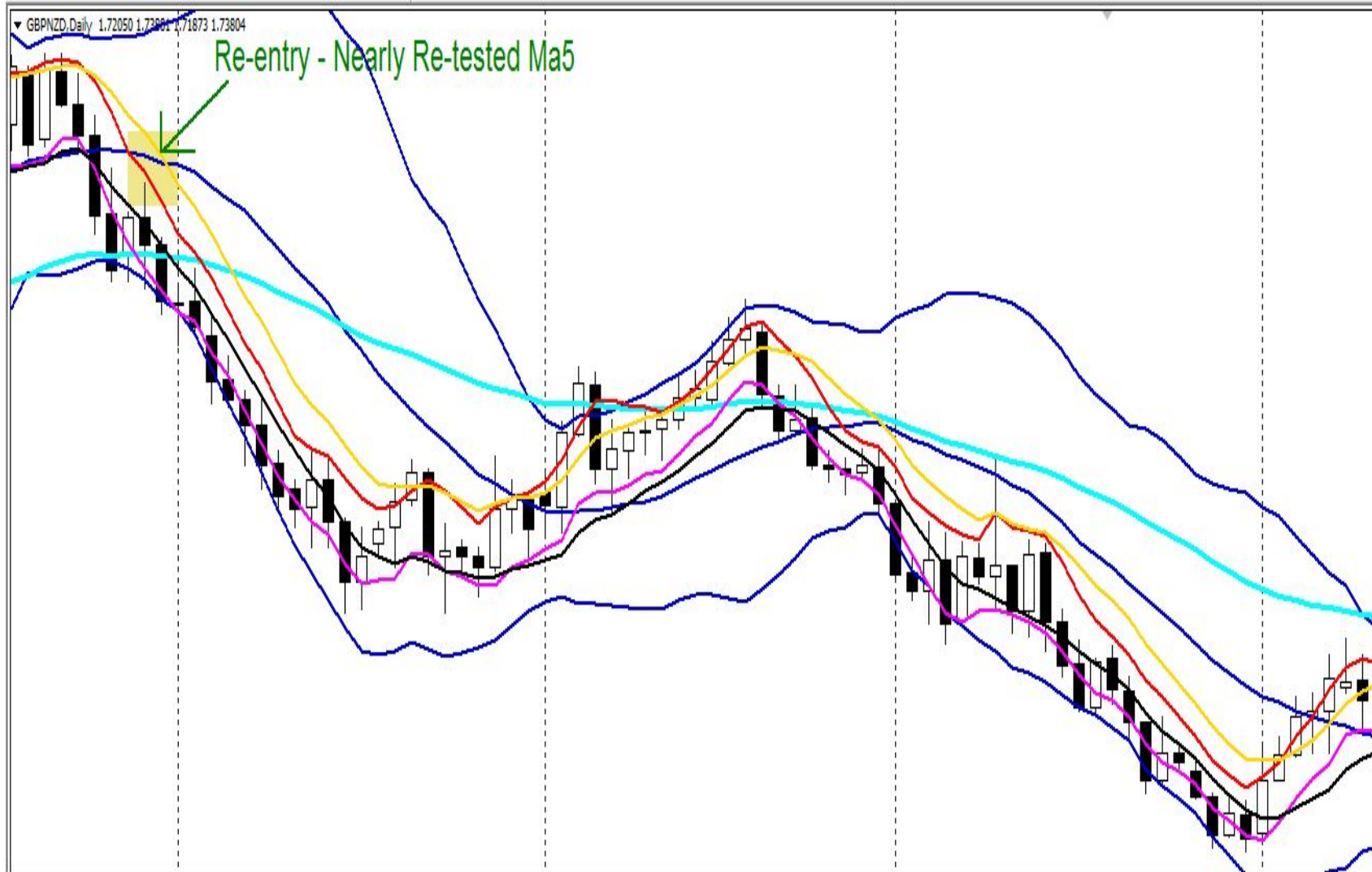
H4 - Re-entry



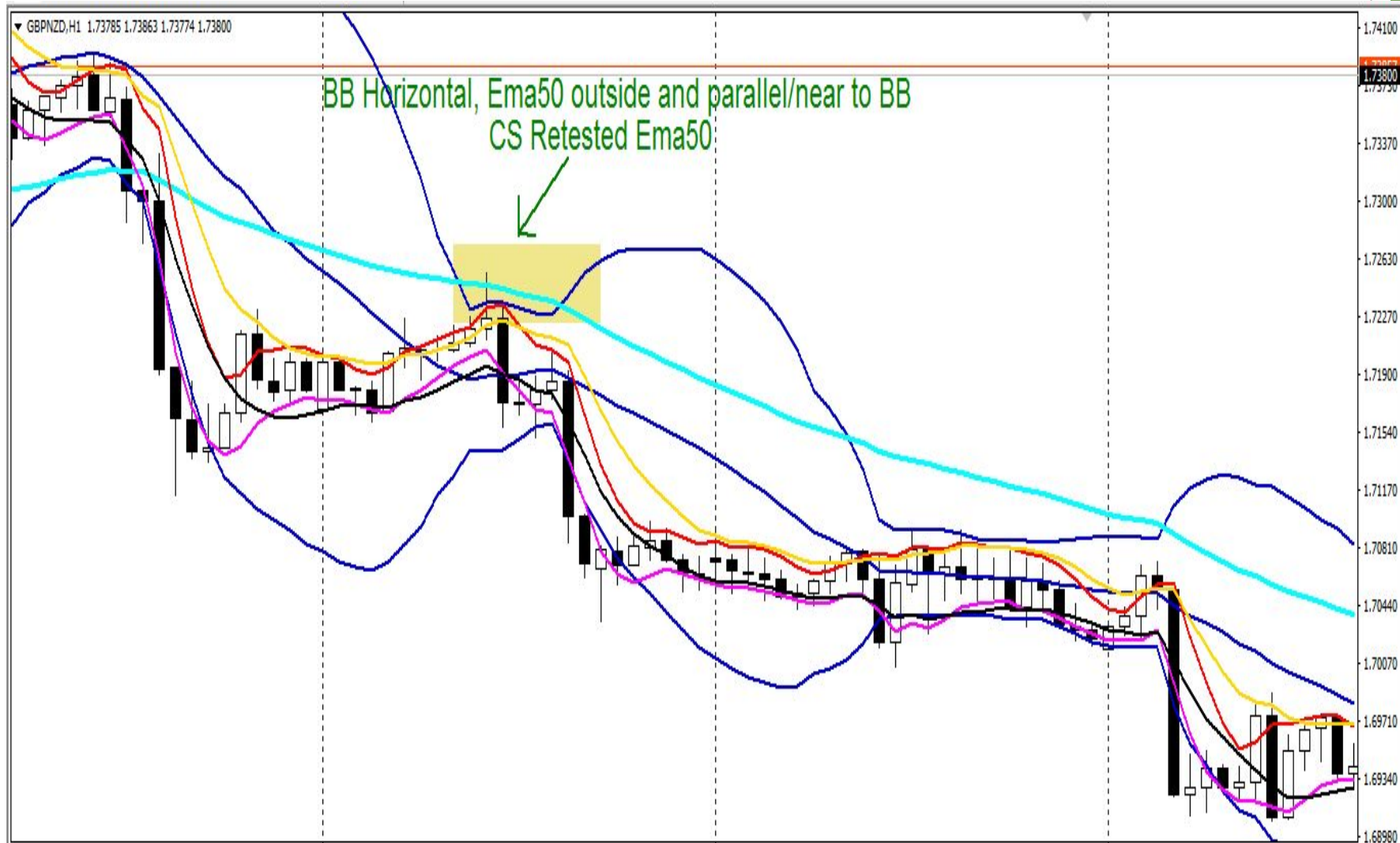
Situation 2 BBEMA - H4 TF



Daily TF - Re-entry



Situation 3 BBEMA - H1 TF



H4 - Re-entry



Multiple TF; Major and Manor Movement

This Movement is for tracking down 80-90% unfinished trend. To spot the Movement, we have Markings. There are 3 main signals/features to spot major and manor movement reversals.

1. Sideways market = BB Horizontal
2. MLV or when the market is Sideways and meet with Mid BB
3. Sideways market and gives us a Re-entry

How to see Major & Manor or SOP

- Daily - Marking, if you get any of the 3 features(sometimes the market will touch ma5/10)
 - For direction (to see trend, use Ema50 if it's a Downtrend or Uptrend)
 - For TP, when the markets touches Ma5/10
- H4 - Confirmation TF
 - also for TP
- H1 - Entry TF
 - Apply basic BBMA diagram/7 steps for entry

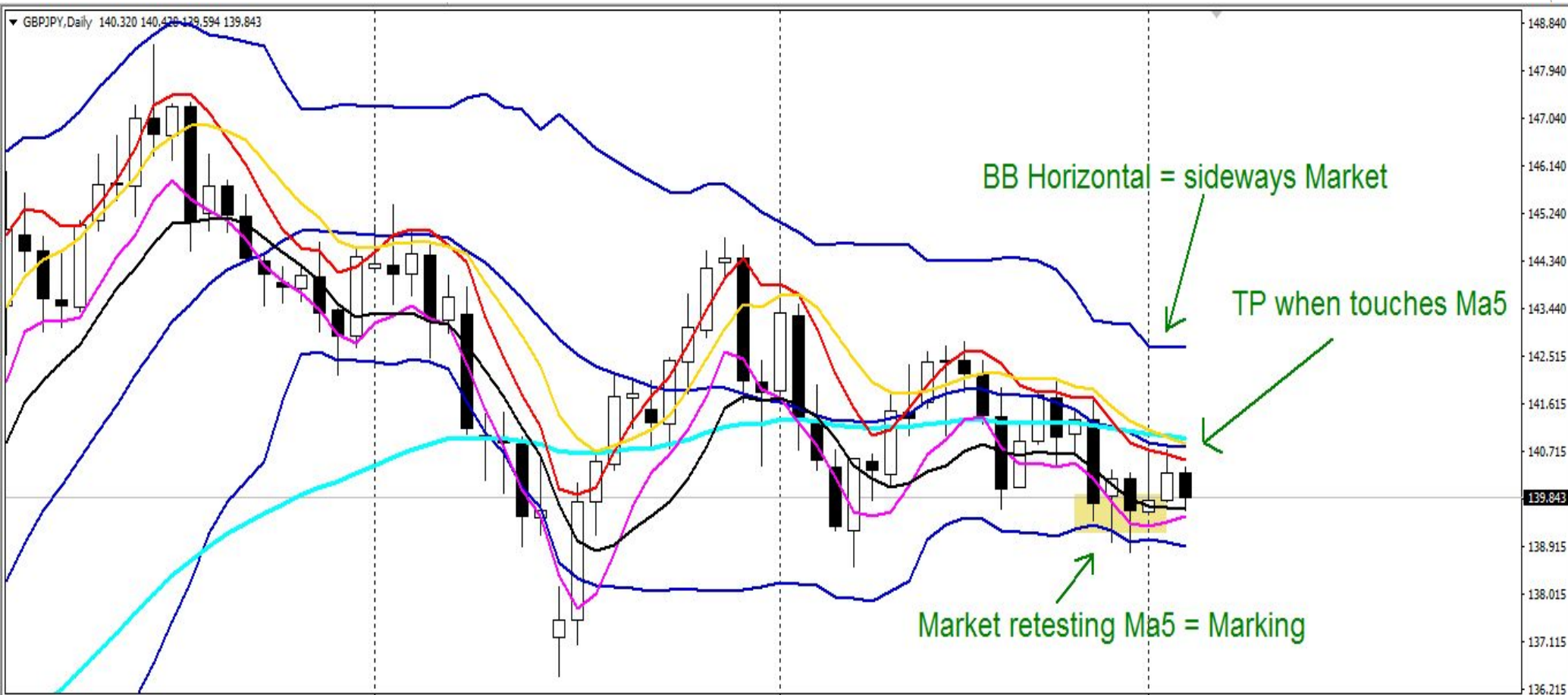
Example; Major (weekly - H1 but manor is from H1-m1)

This is the standard SOP of the Movement

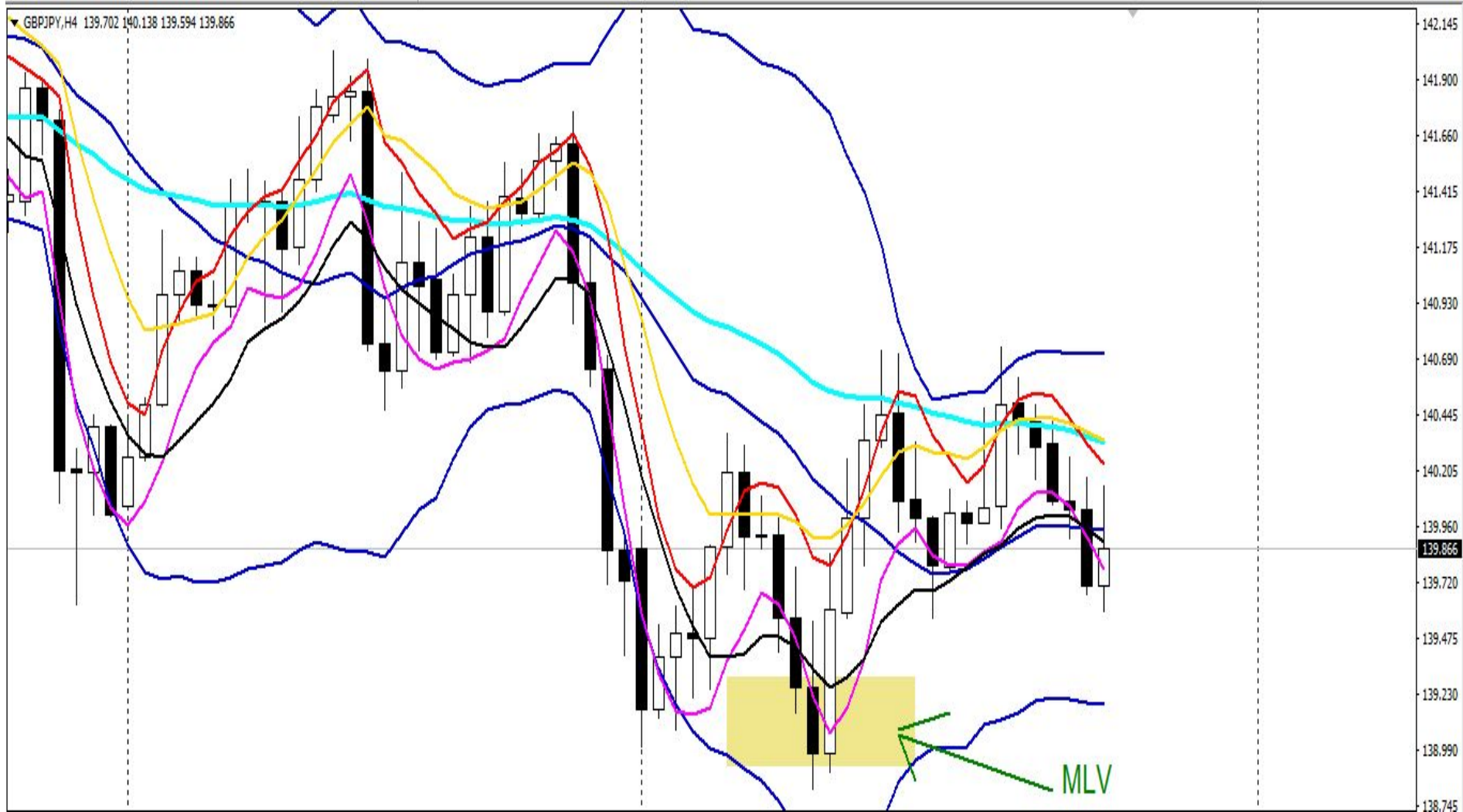
- Daily - Feature/marketing, BB horizontal = sideways market
- Tp when market touch Ma5
- H4 - Has to be an MLV
- H1 - if there's an Extreme, it's a bonus. But compulsory signal you have to see is MLV and CSD and enter on Re-entry (sometimes there won't be a R-entry, the market will retest the previous low/high or create a double top/bottom)

Illustration of Major Movement

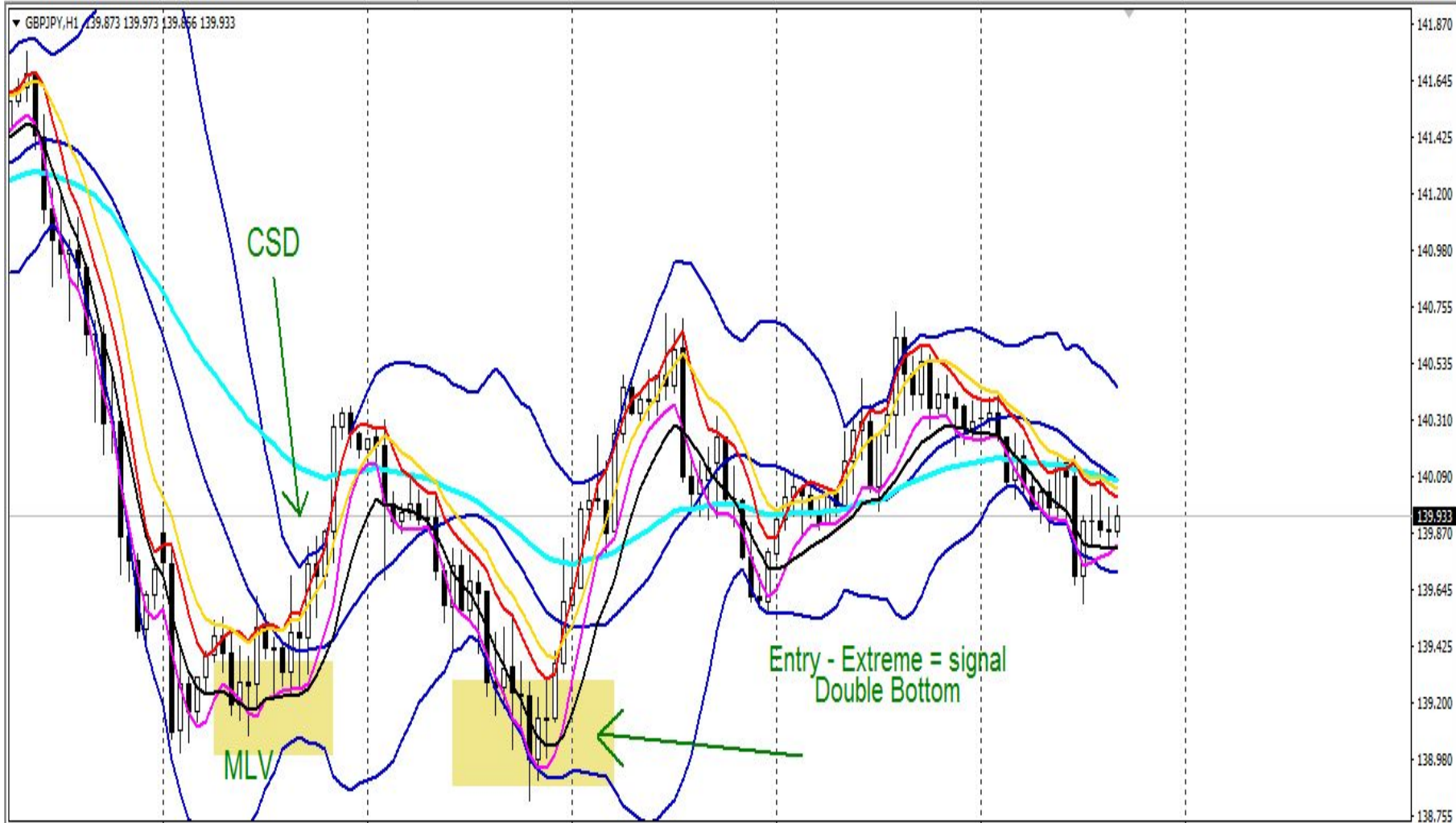
- ▶ Daily - Feature/marking, BB horizontal = sideways market
- Tp when market touch Ma5



H4 - Has to be an MLV



H1 - Extreme - Double bottom



Extreme “C” signal

- ▶ Extreme “c” is more of a hidden Re-entry
- ▶ We see it using Ma5/10, when candles sticks and close outside of it
- ▶ This helps us to see a strong Momentum in the market

- ▶ SOP of Extreme “C”
 - I. Big Tf, a candle will be outside of Ma5/10, acting as a CS Momentum
 - II. Middle Tf, we need to see a Re-entry
 - III. Smaller Tf, we have to see an Extreme C/BBEMA (Ema50 Re-entry situation)

Extreme "C" Illustration

- ▶ H4 - CS Momentum - outside Ma5



H1 - Re-entry



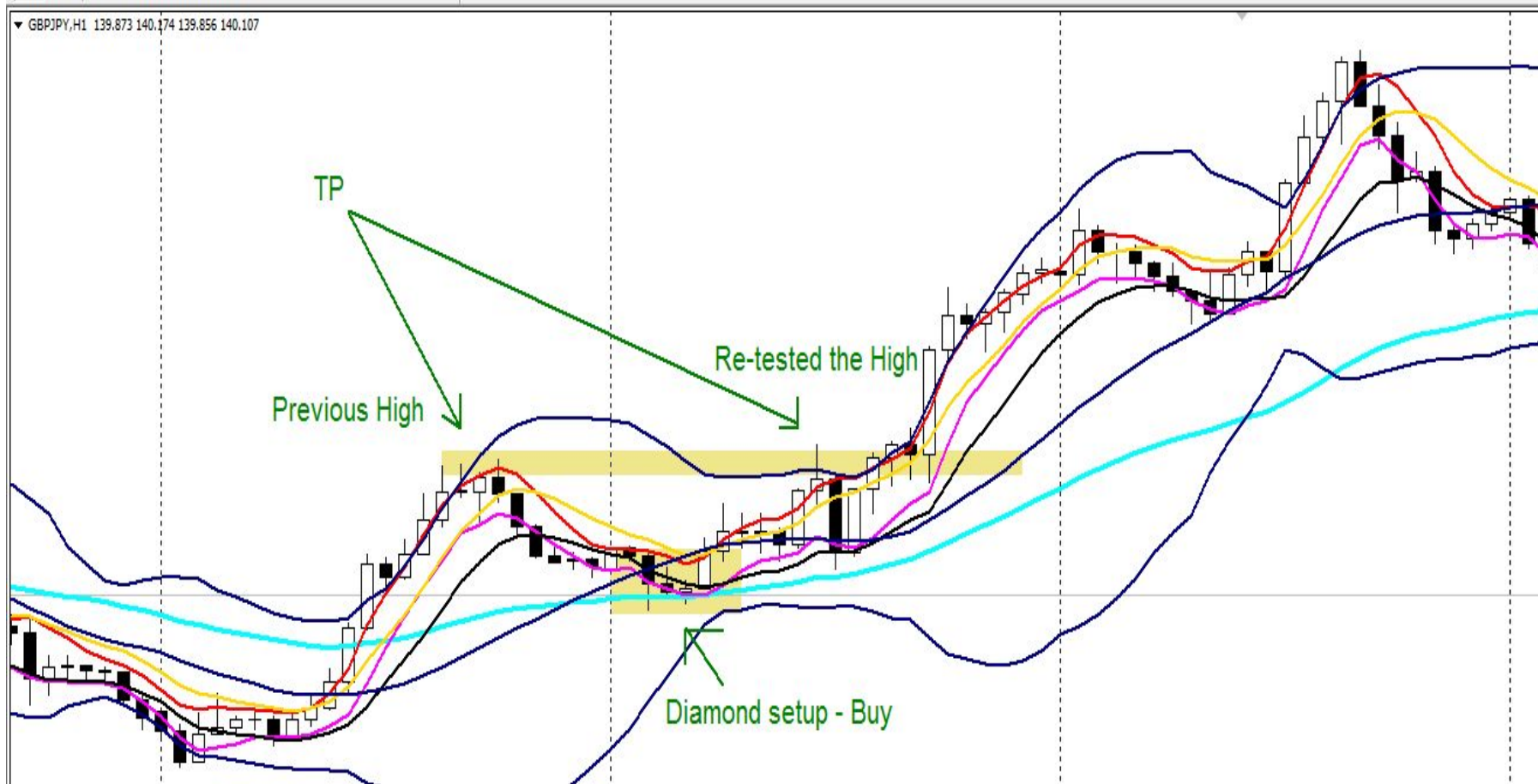
M15 - Extreme C/BBEMA



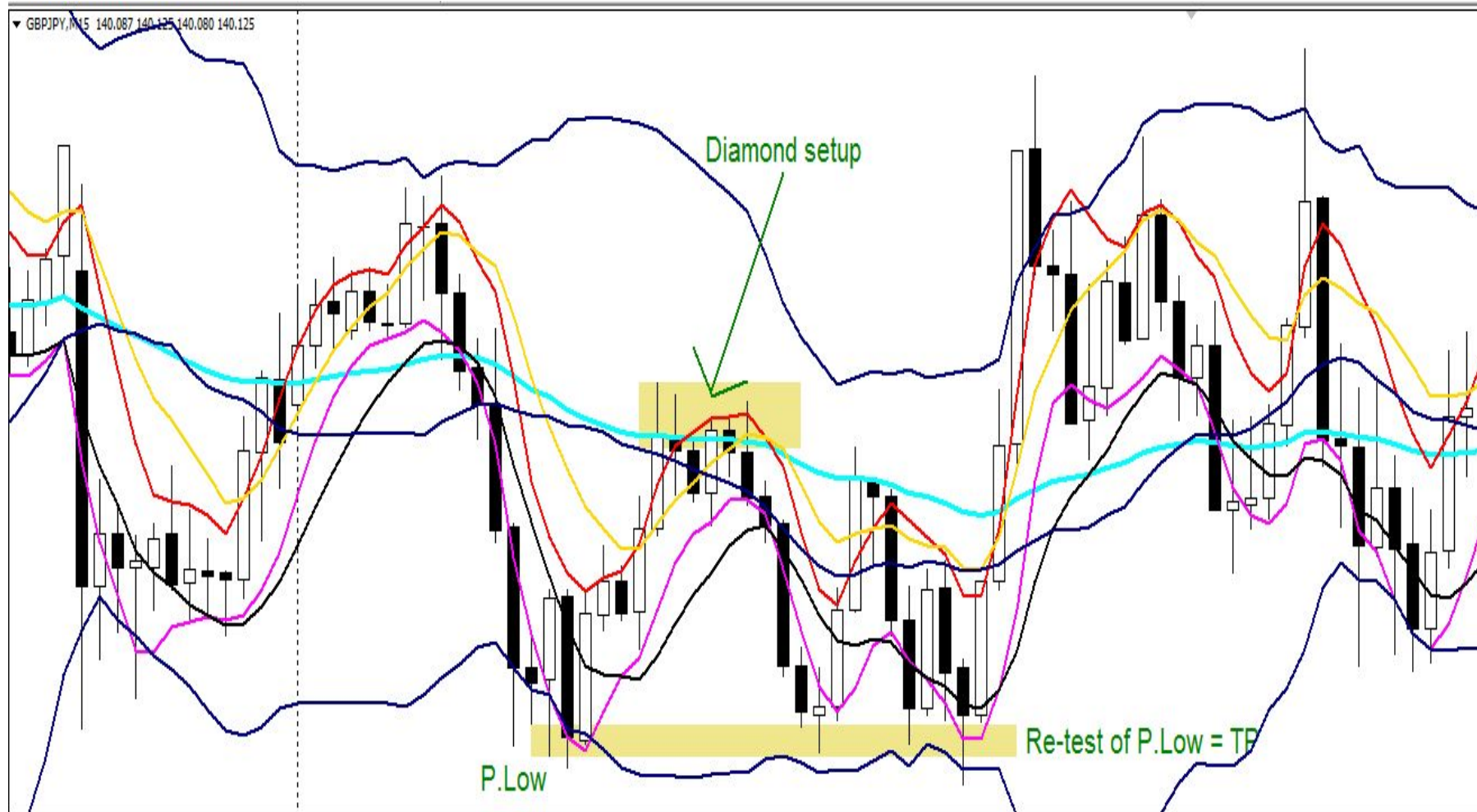
Diamond Setup

- ▶ Diamond Setup is 100% accurate.
- ▶ It happens when $Ma5/10$, $Ema50$ are parallel to Mid BB, it shouldn't be far from Mid BB
- ▶ There should be 3 cs to re-retest/reject $Ema50$ and enter on the forth one. Sometimes you get less cs retesting/rejecting
- ▶ You Tp when the market reach previous Low/High
- ▶ If there was an extreme before, the Diamond setup will be very
- ▶ SL 10 pips away
- ▶ For Buy, $Ema50$ should be below Mid BB
- ▶ For Sell, $Ema50$ should be above Mid BB

Diamond setup Illustration



Diamond Setup - Sell Illustration



Golden Setup

- ▶ Golden Setup is a powerful Re-entry situation
- ▶ There's Two kinds of Golden Setup
 - I. Golden Setup that has Extreme "C"
 - II. Golden Setup that has Ema50/BBEMA situation

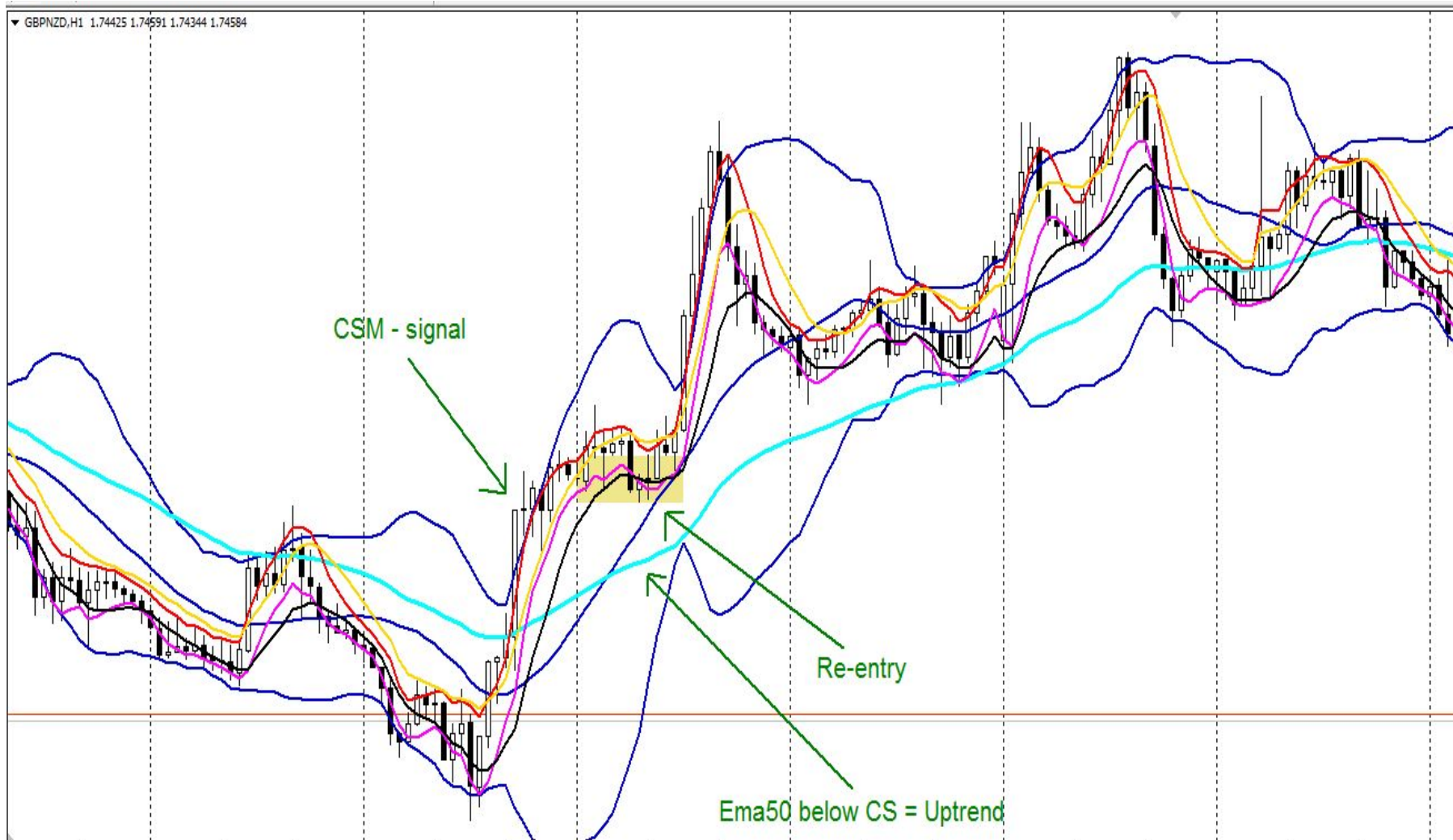
For Golden Setup, we use Four Time Frames

Extreme "C" Golden Setup Illustration

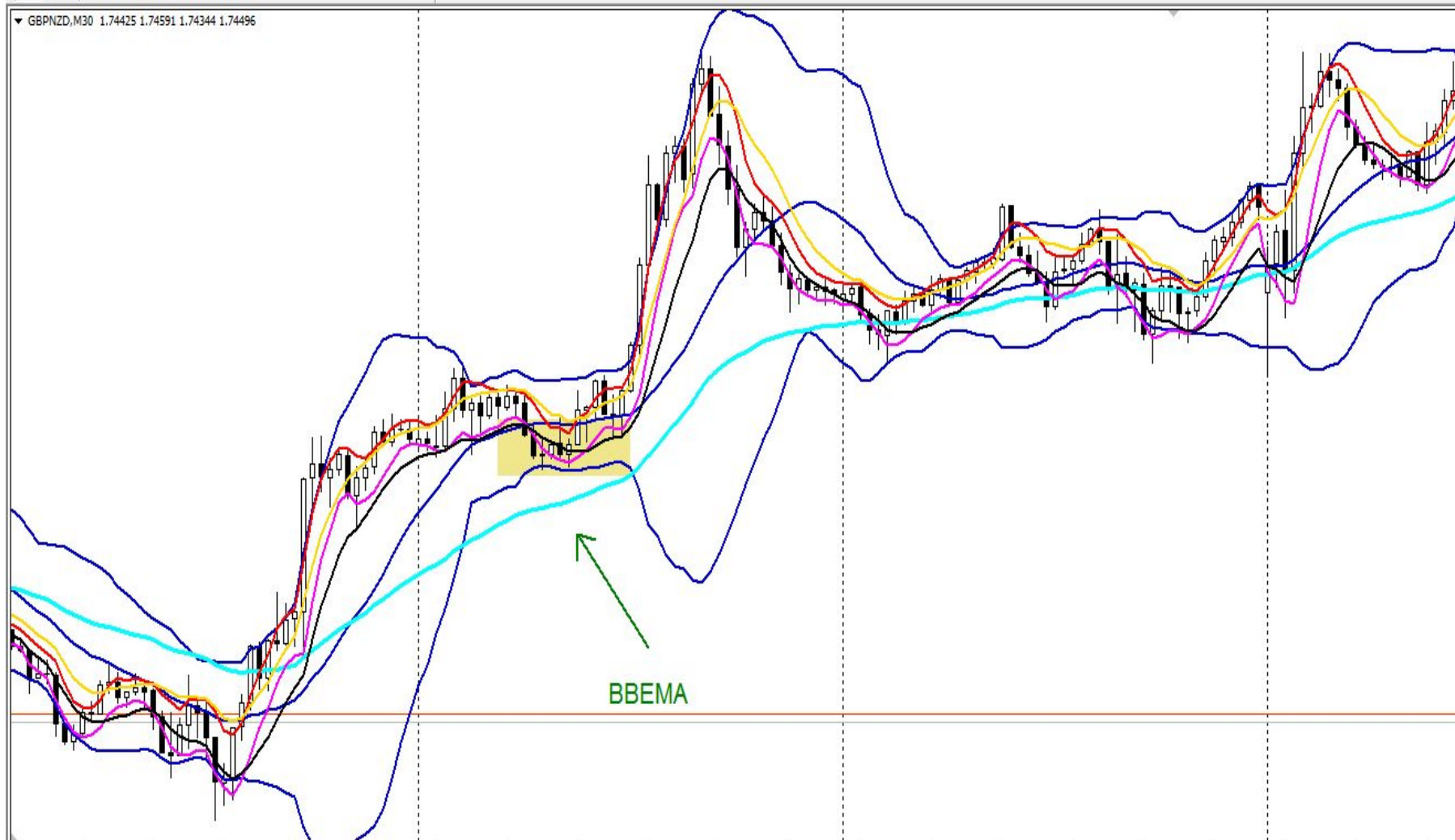
- ▶ H4 - Extreme "C" (cs nearly touch Ma5, but for this setup. Ema50 has to be below but not far from CS. Vice versa for going down.



H1 - Re-entry



M30 - BBEMA

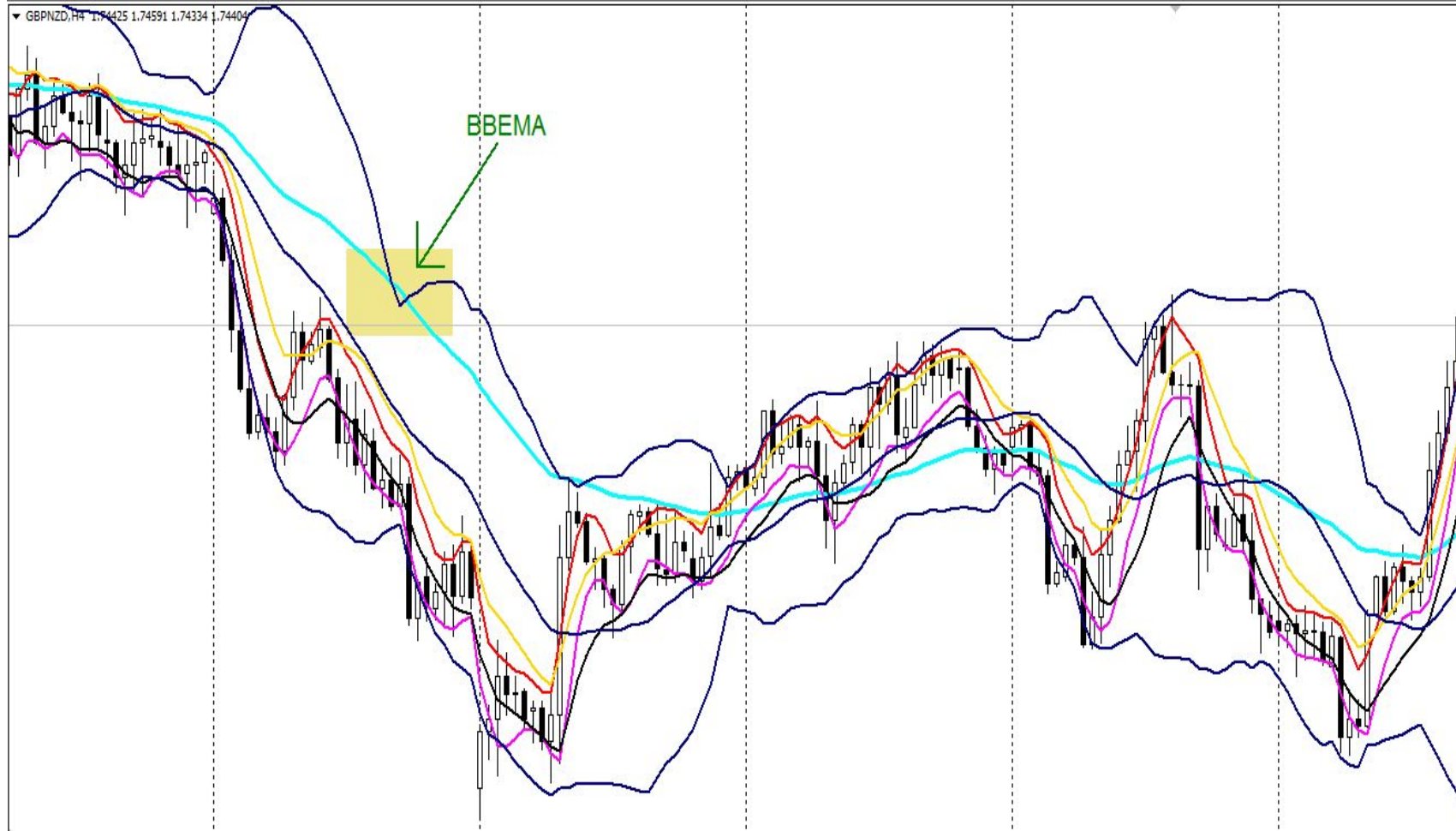


M15 - Extreme (Ema50 unit with Extreme. As long as Ema50 is within the extreme zone, it's fine)

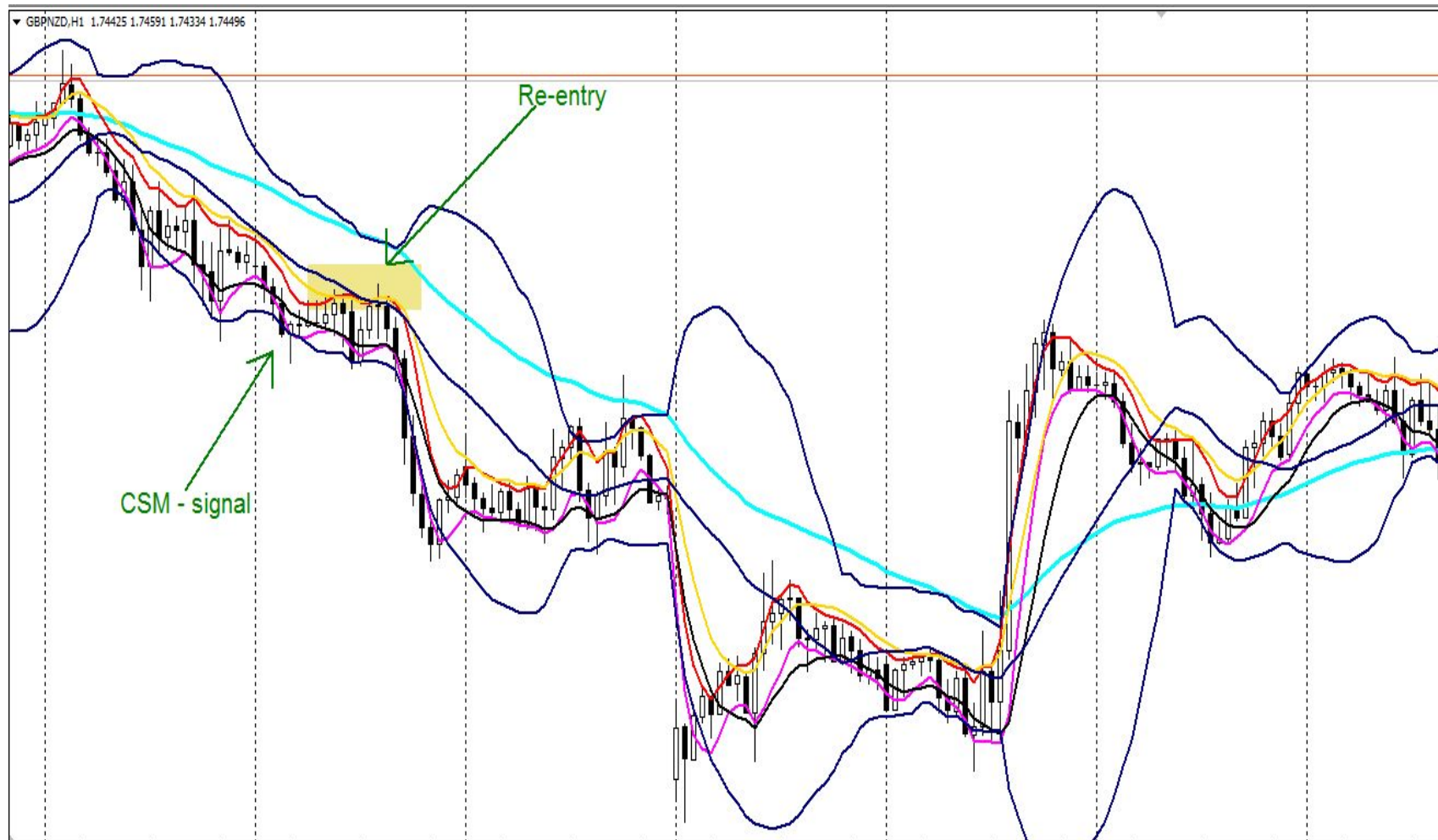


BBEMA Golden Setup

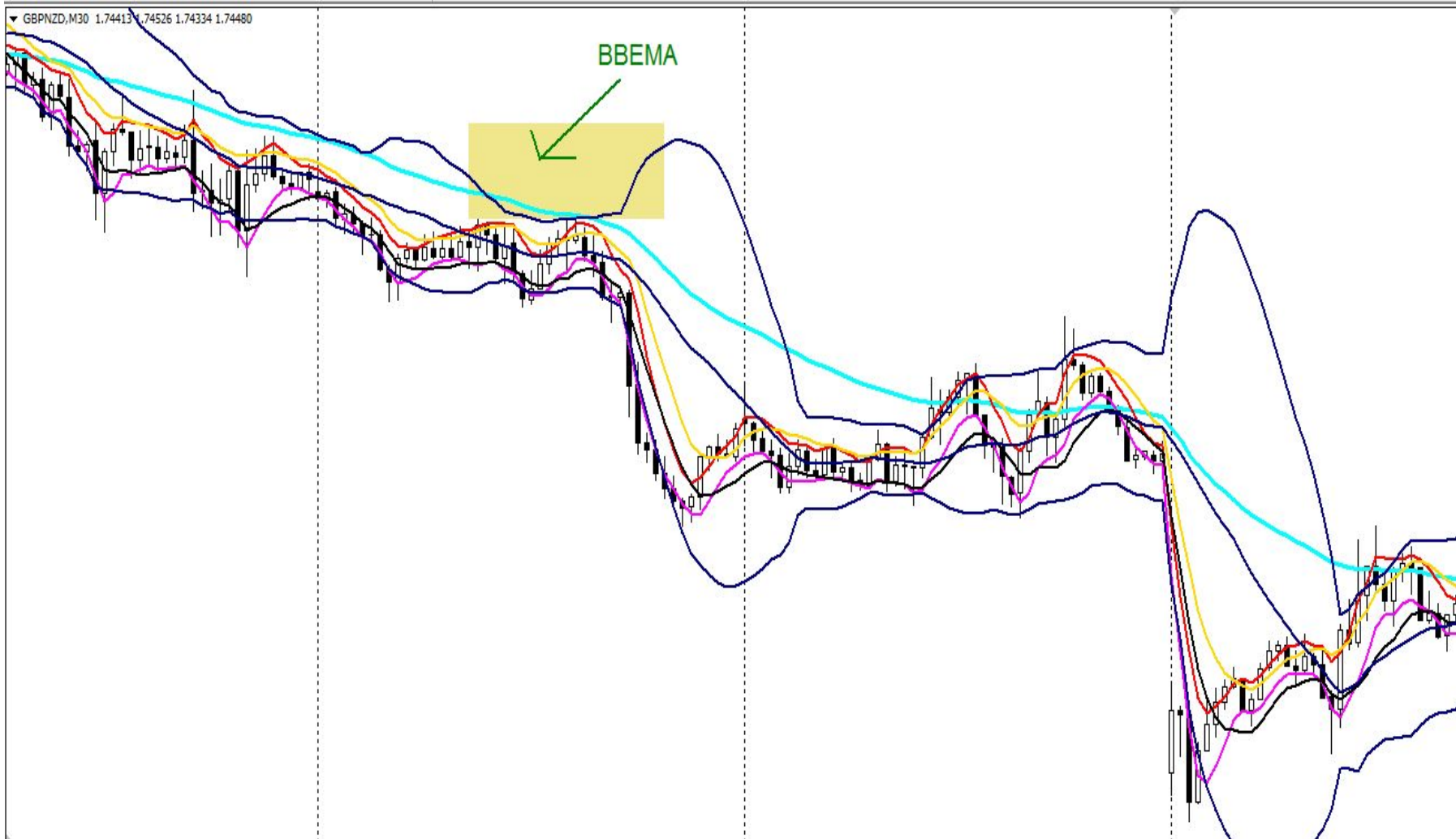
▶ H4 - BBEMA



H1 - Re-entry



M30 - BBEMA (as long as Ema50 is above for going down on this TF it's fine)

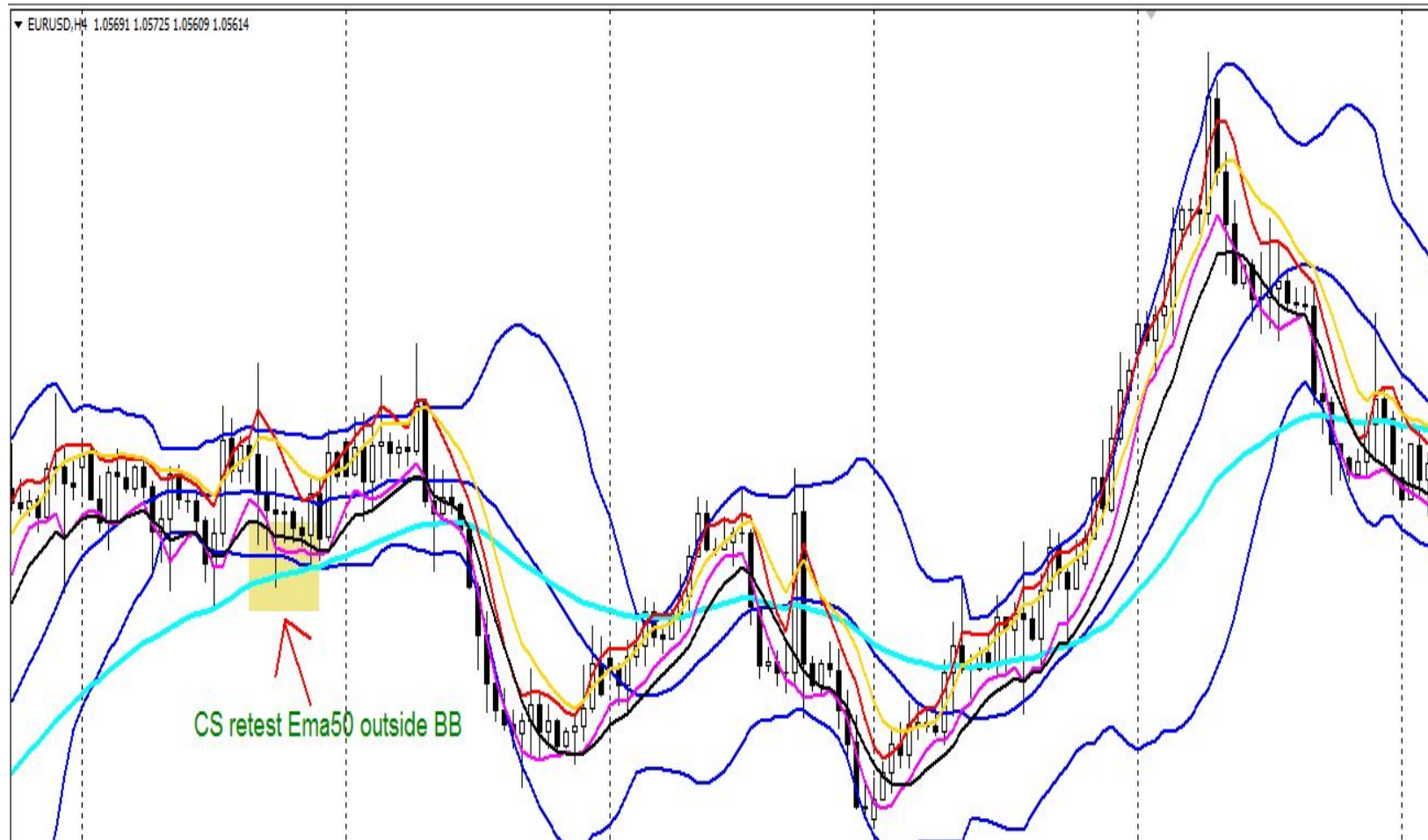


M15 - Extreme, unite with Ema50



Re-entry situation formation Uptrend - (EurUsd only)

- ▶ H4 - candles will retest and reject Ema50 while outside the BB



H1 - Extreme



M15 - There has to be an Extreme

- ▶ I couldn't go back on M15 where there was an Extreme because it's too far.

Setup RMR

- ▶ If there's no REM (Re-entry - Extreme - MLV) there'll be a setup called RMR which is a Re-entry - MLV - Re-entry.