

L700 Download User Guide (Flash loader v0.x Lite 7.0.2)

**Jul. 2008 Suwon, Korea
S/W Platform2 Group
Mobile Communication Div.
SAMSUNG Electronics Co., Ltd.**

Contents

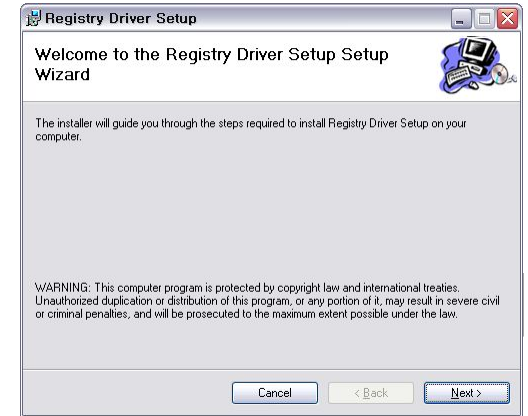
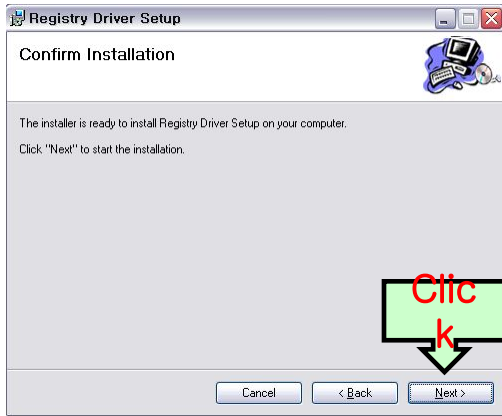
- Setting up configuration for L700 Downloader.
 - How to install the USB driver.
 - How to uninstall USB driver.
- Usage of Downloader.
 - Selection Binary.
 - Checking main options.

Setting up configuration(Install-1)

- How to install USB Driver
 - I. USB Driver\USBREGDRV-1.6

이름	크기	종류
InstMsiA,Exe	1,668KB	응용 프로그램
InstMsiW,Exe	1,779KB	응용 프로그램
Setup,Exe	108KB	응용 프로그램
Setup,Ini	1KB	구성 파일
SetupRegDrv,msi	125KB	위젯
USBREGDRV-1.6,zip	3,496KB	위젯

Double Click

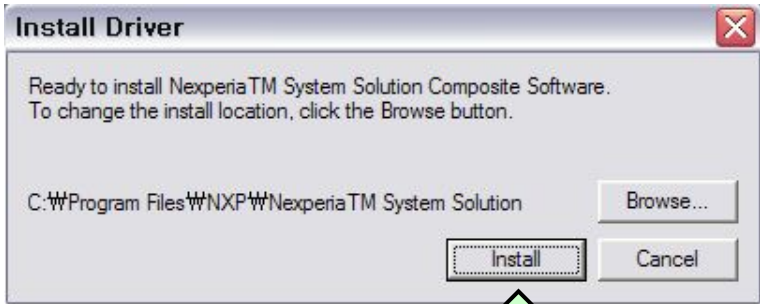


Setting up configuration(Install-2)

II. USB Driver WUPCDRIV-1.10.LMSQB10495_LMSQB15682 WUSB driver MCCI 4_38_9_330

psdfmdfl.sys	9KB	시스템 파일
psdfmdm2.inf	13KB	설치 정보
PSDFUninstall.exe	54KB	응용 프로그램
psdfbus.sys	B	시스템 파일
Setup.exe	B	응용 프로그램
psdftat.sys	B	시스템 파일
psdfobex.sys	86KB	시스템 파일

Double Click



Click



Click

Setting up configuration(Install-3)

III. How to install DFU device

- a. Invoke the Device Manager (Right-click My Computer then select Properties)
- b. Press “*–key + send–key” or “#–key + on–key”, then connect your phone with the usb cable (example : Y–cable).
- c. You can see new device, “USB Device with DFU Capabilities”.
- d. Right-click this device then click Driver Update.
- e. You have to select the file like “Flash loader v0.x Lite 7.0.2W52xdfu.sys” or folder like “Flash loader v0.3 Lite 7.0.2W” in the location of input box

IV. If you finished all usb driver installing, reboot computer.

Setting up configuration(Uninstall-1)

- How to uninstall USB Driver
 - I. USB Driver\USBREGDRV-1.6

Double Click

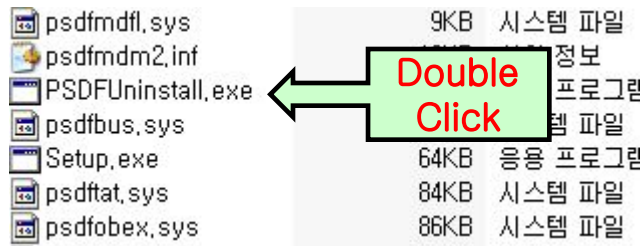
이름	크기	종류
InstMsiA.Exe	1,668KB	응용 프로그램
InstMsiW.Exe	1,779KB	응용 프로그램
Setup.Exe	108KB	응용 프로그램
Setup.Ini	1KB	구성 파일
SetupRegDrv.msi	125KB	Windows Installer 패키지
USBREGDRV-1.6.zip	3,496KB	Windows Installer 패키지



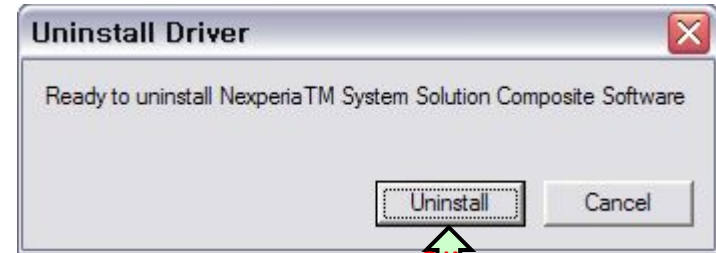
Click

Setting up configuration(Uninstall-2)

II. USB DriverWUPCDRIV-1.10.LMSQB10495_LMSQB15682WUSB driver
MCCI 4_38_9_330



Double Click



Click

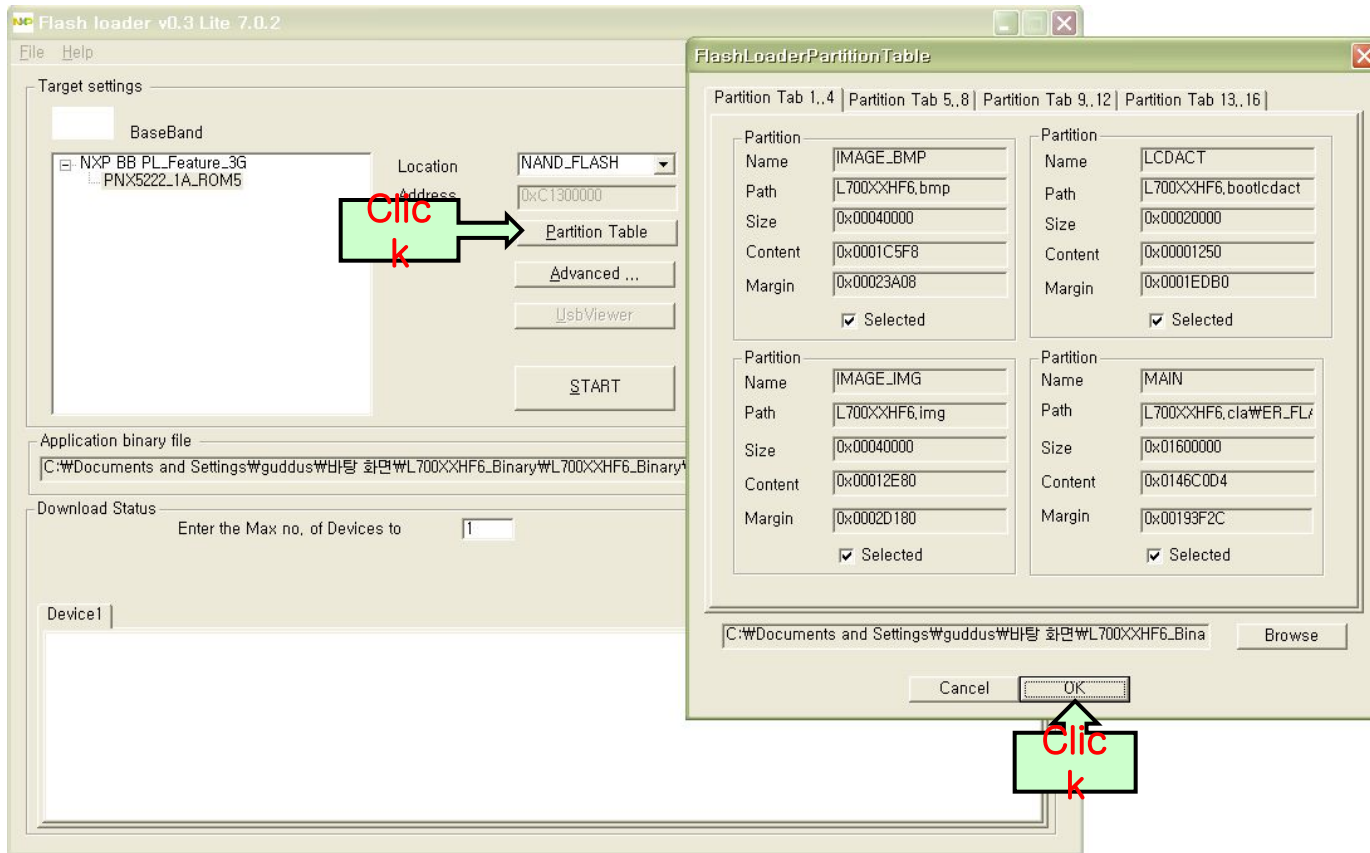


Click

Then, reboot your computer.

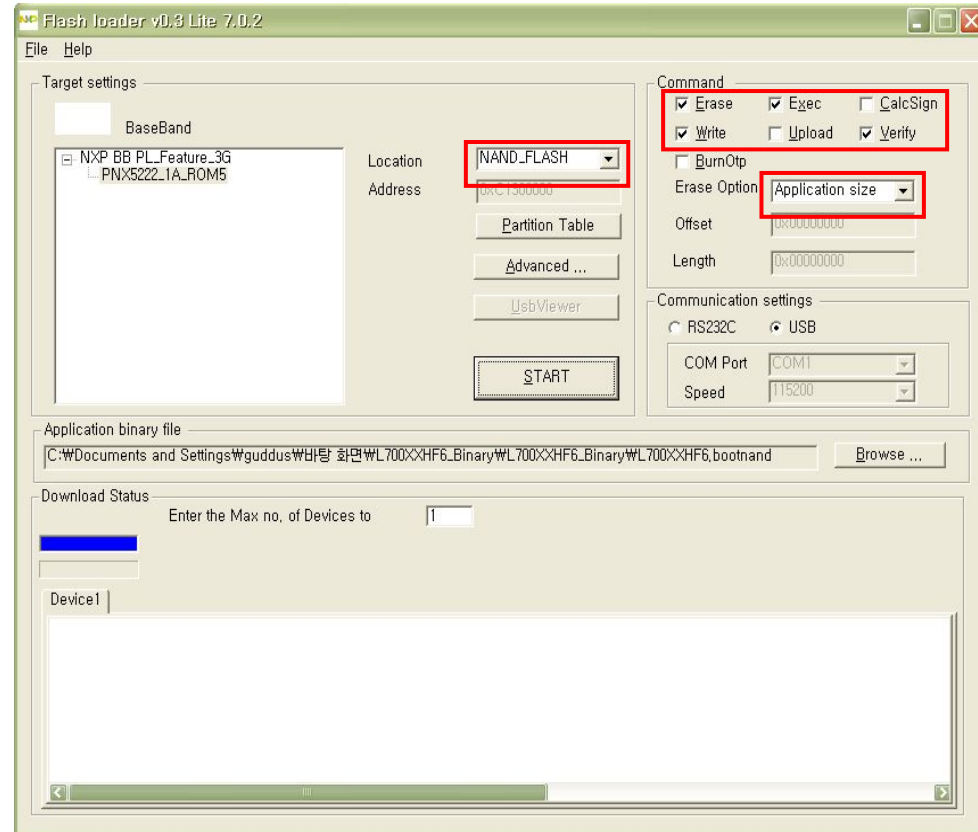
Usage of Downloader-1

- Selection Binary



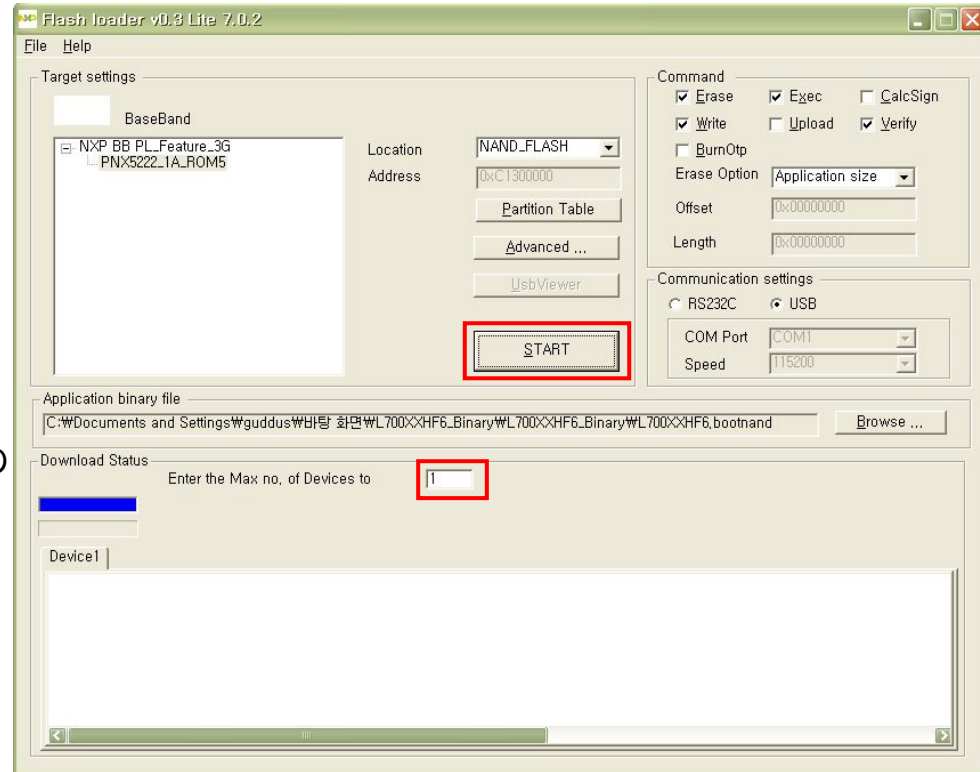
Usage of Downloader-2

- Checking main options
 1. NAND_FLASH as Location.
 2. Essential options for downloading: Erase, Exec, Write, Verify
 3. You must always select “Application size” as Erase Option.



Usage of Downloader-3

- How to start downloading
 1. Enter the number of Device in small red box.
 2. Press START button. Then, the text will change from “START” to “STOP”.
 3. During you press keys(#+send-key, *+on-key), try to download by plugging in usb cable.



THE END