

Kazakh-Russian Medical University

Independent Work

Theme:

Done by: Sagatova Madina.

Faculty: GM

Group: 104A

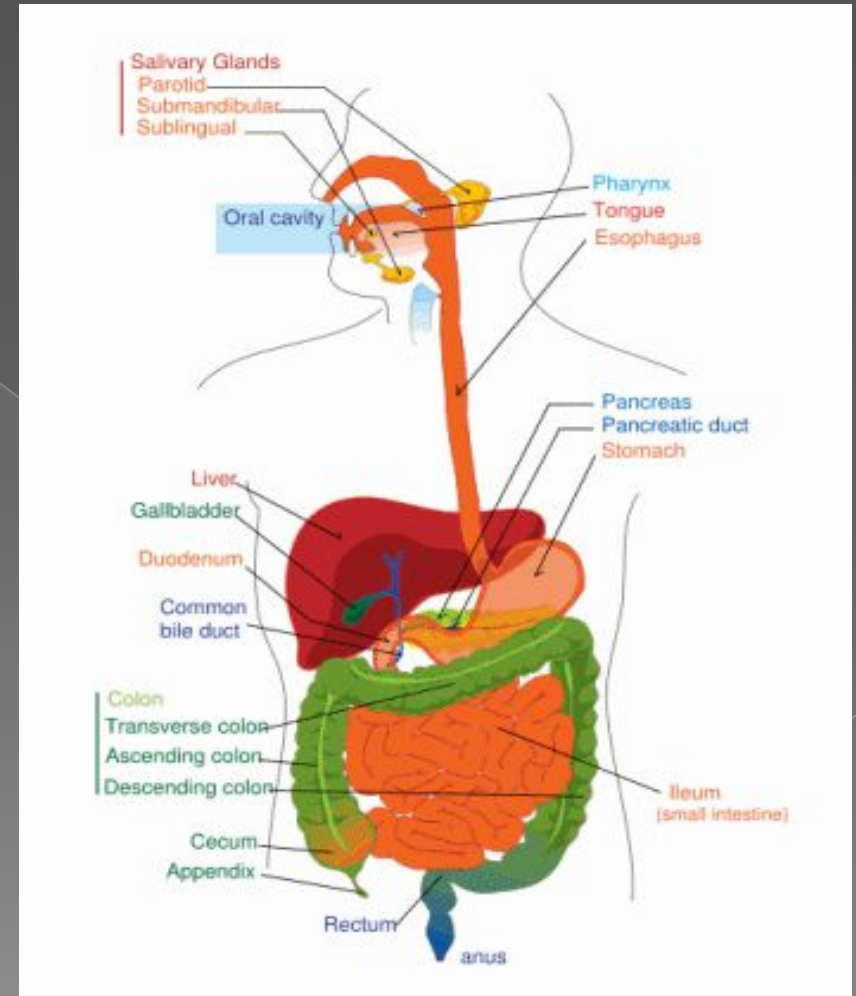
Checked by: Kosbatyrova N.B

PLAN

- The Alimentary Tract
- Mouth
- Esophagus
- Small Intestine
- Large Intestine

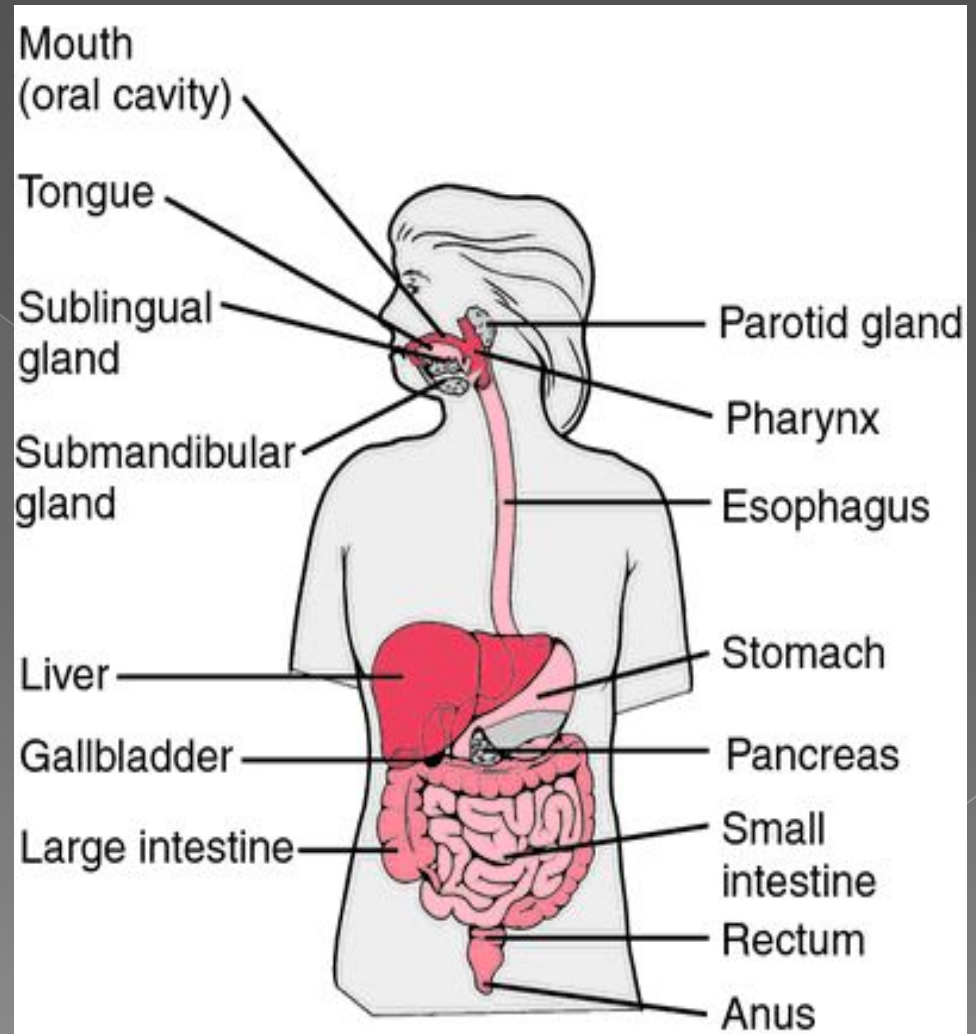
The Alimentary Tract

- A long muscular tube with many sections and areas.
- Begins with the mouth and ends with the anus.



The Alimentary tract

- Mouth
- Pharynx
- Esophagus
- Stomach
- Small Intestine
- Large Intestine
- Anus



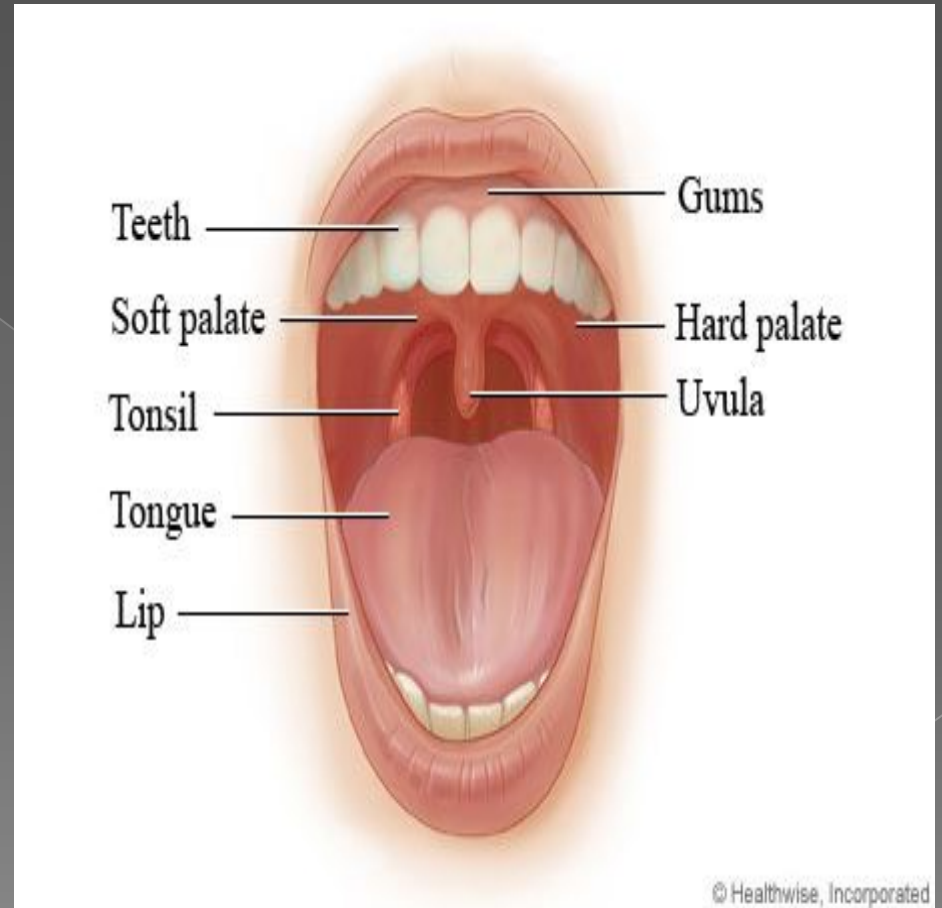
Mouth

Functions:

- Food enters in the mouth or oral cavity
- Tasting
- Mechanical breakdown of food
- Secretion of salivary glands (salivary amylase).

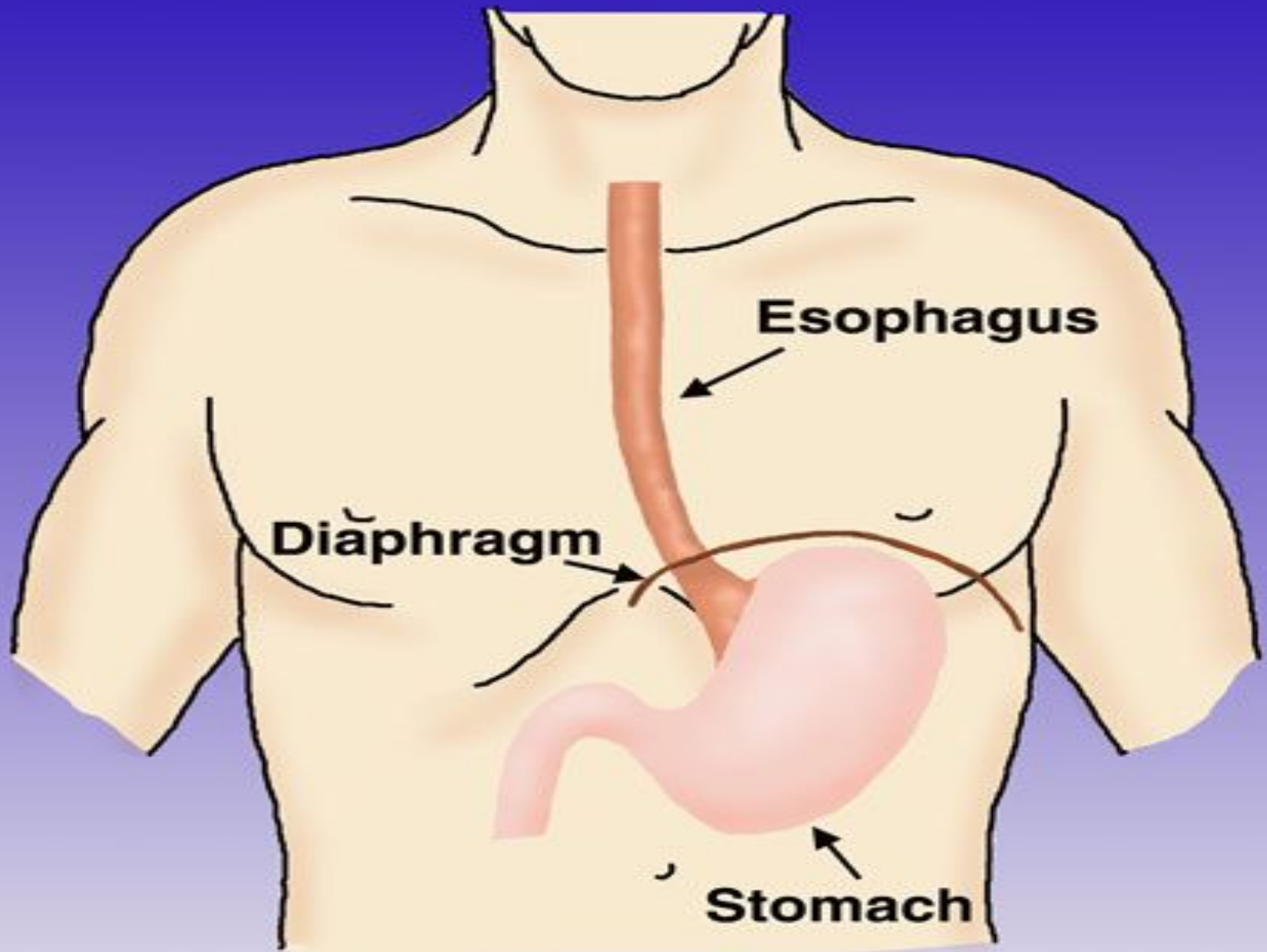
Mouth

- Structures in the mouth that aids digestion:
- Teeth – cut, tear, crush and grind food.
- Salivary glands – produce and secrete saliva into the oral cavity.



Esophagus

- A straight muscular tube that is about 10 inches (25 cm) long which connects the mouth with the stomach
- Food takes about 4 to 8 seconds as it passes through to the stomach.
- Its walls contain smooth muscles that contracts in wavy motion (Peristalsis).
- Peristalsis propels food and liquid slowly down the esophagus into the stomach.
- .Cardiac Sphincter (ring-like valve) relaxes to allow food into the stomach.



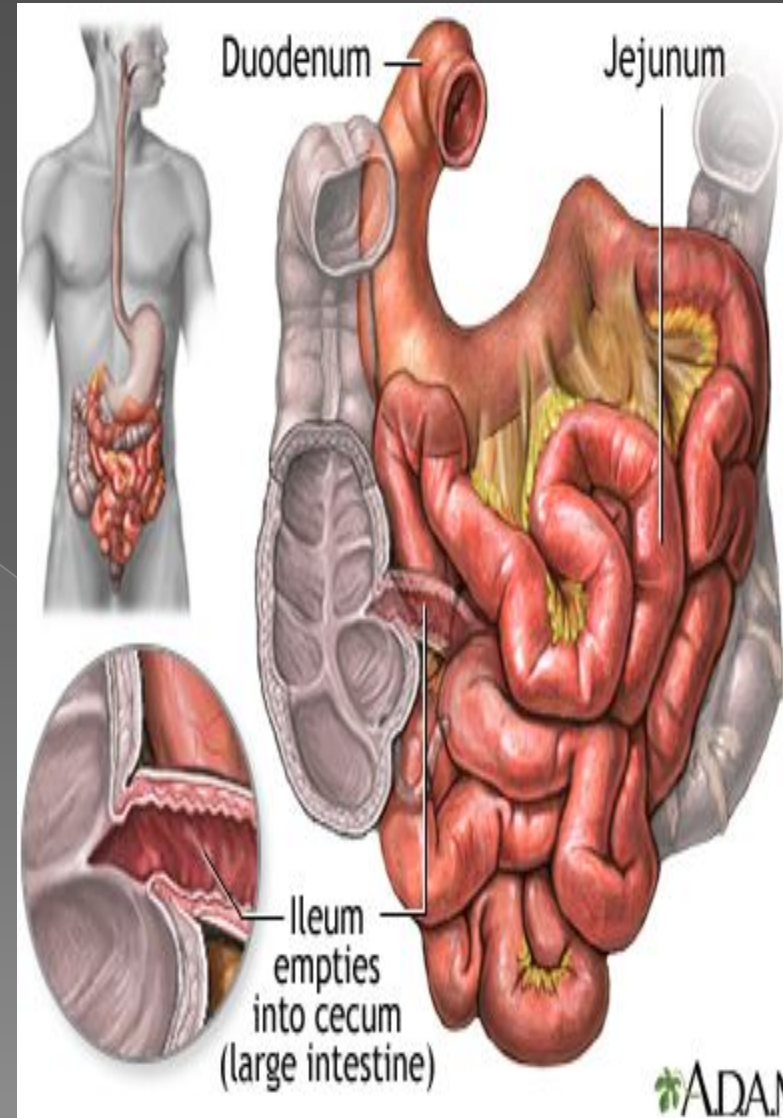
Esophagus

Diaphragm

Stomach

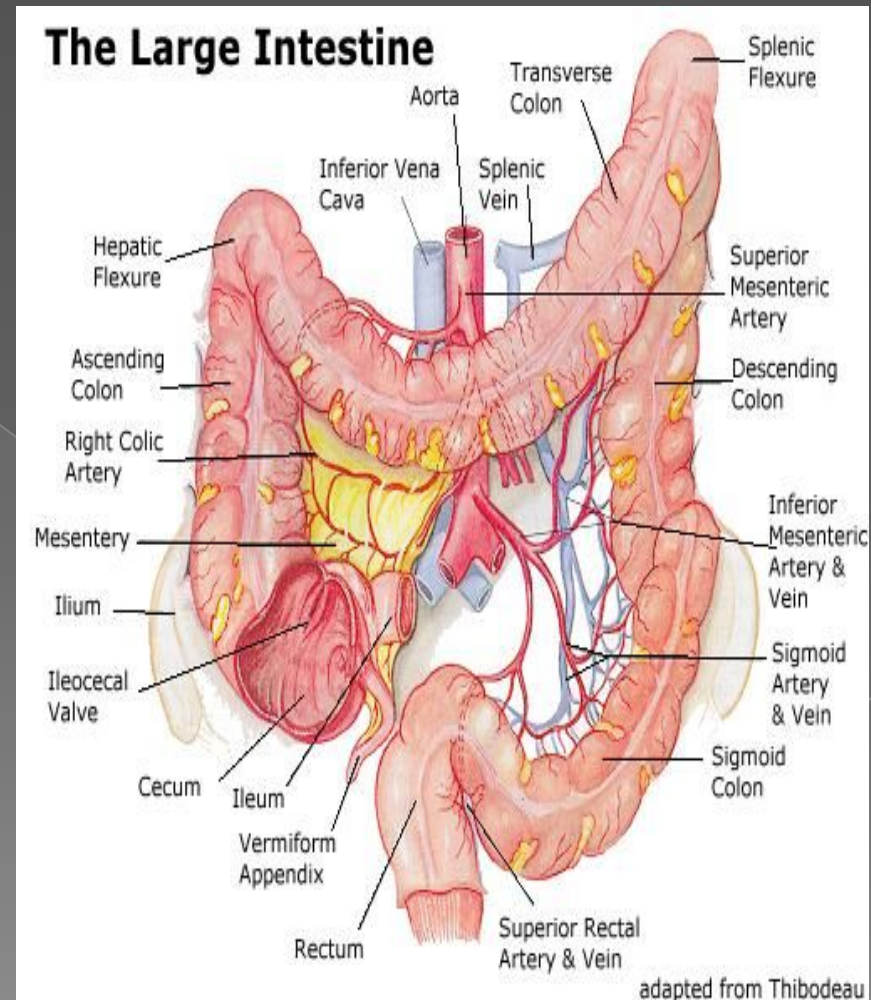
Small Intestine

- Long (20 ft), coiled tube beneath the stomach.
- Has three parts:
 - Duodenum – upper part; about 10 in; connected to the stomach.– where the digestive juices from the pancreas and the liver combine with chyme making it thin and watery.
 - Jejunum – about 8
 - ftIleum – about 12 ft



Large Intestine

- a.k.a. Colon larger diameter, but shorter (5 ft) Water is absorbed from the undigested food making the waste harder until it becomes solid. Waste stays for 10 – 12 hours.



Large Intestine

- Waste is pushed into the expanded portion (rectum) of the large intestine.
- Solid waste stays in the rectum until it is excreted through the anus as feces.
- Appendix hangs on the right side of the large intestine.

Questions

1. Where a long muscular tube begins?
2. What features has the mouth?
3. What is included in the structure of the mouth?\
4. What to crush and grind food?
5. What makes the salivary glands?
6. How much time takes food to pass through the stomach?
7. How many parts is the small intestine?
8. What are the diameter of the colon?
9. What intestine remain solid waste?
10. Why annular valve relaxes?