

*The project of Information educational System*

**«The river Vodla flows»**

*The work :*

**«The flora of the river-basin Vodla».**

*The authors: Suzko Viktoriya ,*

*Savchenko Tatyana*

*MOU SOSH s. Kubovo, the 10<sup>th</sup> form*

*Scientific leader: Timofeeva V.V.*

*School leader: Korgueva V.E.*

**KUBOVO 2007**



**Aims and tasks:** to know the kinds of vascular plants on the banks of the river Vodla near the settlement Kubovo.

**The place and the time:** July-August 2007 in and nearby settlement Kubovo.

Investigations were made by a route method. We investigated the banks of the river Vodla near the settlement Kubovo, the island Voibuch, the stream Pikhruchei, the stream Chastoruchei, the rapids Shcheliki, the banks of the river Koloda in the village Kubovskaya..

**There are about 1200 kinds of wild vascular plants, more than 400 kinds of mosses , about 900 kinds of lichens. Karelia is rich in berry-bushes.**

**The river-basin Vodla is very interesting in this attitude..**

*«The Vodla is the river in the south-east of Karelia. . It is flown from Vodlozero by two sources (Vama and Sukhaya Vodla).It is fall into the Onego lake. The length is 149km, the aria of the basin is 13700 sq. km.The average expense of water is about 130 cublic metres|sec. The vibrations of the flow smoothed out by the influence of the Vodlozero. The Vodla is rich in rapids, from which is is navigable only in its down stream. The town Pudozh is on the bank of the river Vodla»*

**«Great Soviet Encyclopaedia»**



# Our river Vodla



# *The results of the investigations*

In the investigated  
kinds:  
trees - 10,  
bushes – 9,  
herbs – 12,  
flowers- 20.



## *Trees:*

*Pine-tree usual,*  
*fir-tree European,*  
*birch-tree warty, birch-tree*  
*downy,*  
*aspen (poplar trembled),*  
*mountain ash usual,*  
*bird-cherry-tree usual,*  
*willow goat's ,*  
*lime-tree small leaf-bearing*  
*(seldom) and alder-tree grey.*

# River Vodla

*The vegetation of the left and the right banks of the river is greatly changed from each other.*

*The right bank of the river is represented mainly by grassy vegetation, but the left bank by wood and grassy vegetation.*



# Tributaries of the river Vodla

**The river Koloda is the left tributary of the river Vodla.**

**The vegetation is represented by leaf-bearing trees, bushes, grassy and flowering plants.**



# Pikhruchei



The stream  
Pikhruchei is the  
right tributary of  
the river Vodla

The wood vegetation  
especially of  
leaf-bearing trees  
are grown here.



# Chastoruchei

*The stream Chastoruchei is the right tributary of the river Vodla. The vegetation here is represented by coniferous kinds of trees, bushes and mosses. And the banks of Chastoruchei are rich in edible and inedible mushrooms.*



**There are plants that are entered into “Red book of Karelia”:**

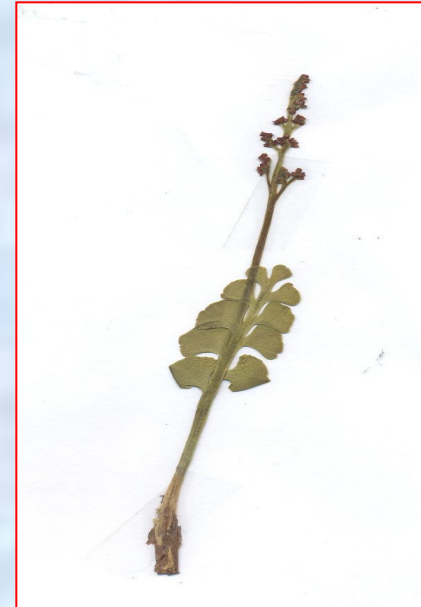
- *Sedge foxy* (family sedge, class dicotyledonous)
- *Kalipso bulbous* (fam.. orchid, class monocotyledonous)
- *Willow three-stamens* (fam. willow. class, dicotyledonous)
- *Knyazhik Siberian* (fam. ranunculi . Class dicotyledonous)
- *St. John. 's wort* ( fam. St. John 's wort, class dicotyledonous)



# Relic plants (ancient,rare plants)



*Uzhovnik usual*  
(fam.yzhovnikovie, class  
polipodiopsidy)



*Grozdovnik half-lunar* (  
fam.. uzhovnikovie)

# Officinal herbs

*There are 300 kinds of officinal herbs in Karelia, 70 of them are used in medicine. 90% heart medicines are made from officinal herbs. We met such officinal herbs with the stream of Vodla-river:*

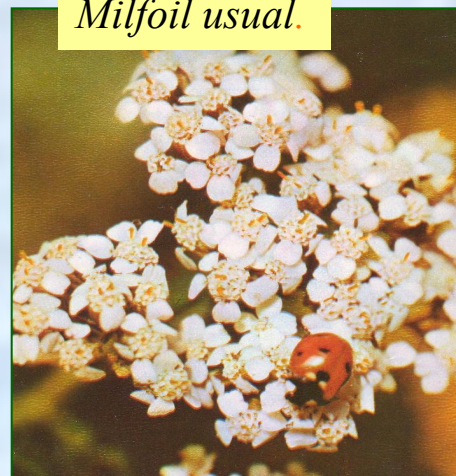
Birch-tree hanging down (fam. birchy);  
 Dushitsa usual (fam. labiatae);  
 St.-John's wort holey (fam. St.-John's-wort);  
 Nettle diclinous (fam. nettle);  
 coltsfoot usual (fam. compositae);  
 Dandelion officinal (fam. compositae),  
 Plantain (fam. plantain);  
 Rose cinnamon (sweetbrier (fam. rosaceae);  
 Marigold three -separeated (fam. compositae)  
 Pizhma usual  
 (fam. Compositae)  
 and others.



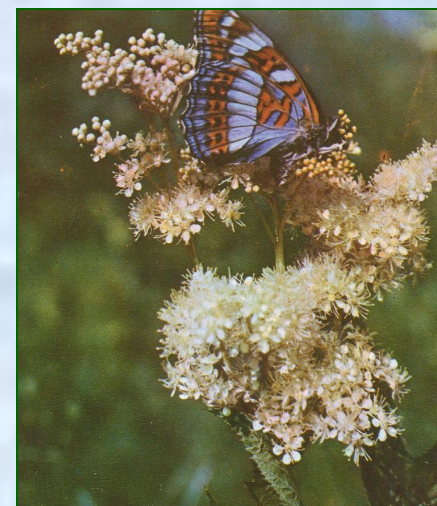
*Sweetbrier  
cinnamon*



*Strlelolist usual*



*Milfoil usual.*



*Tavolga  
vyazolistnaya.*



*Sedmichnik  
european*

# *Vitaminic plants*

*Wild berries are the source of natural vitamins for the population of Karelia. There are 17 kinds of wild berry plants in our woods. We met 12 kinds.*

# Here they are:

- Strawberry
- Raspberry
- Kostyanika
- Cloudberry
- Snow-ball-tree
- Sweetbrier
- Redbilberry
- Bird-cherry-tree
- Cranberry
- Ashberry
- Bilberry
- Golubika



**Golubika**



**kostyanika**



**strawberry**



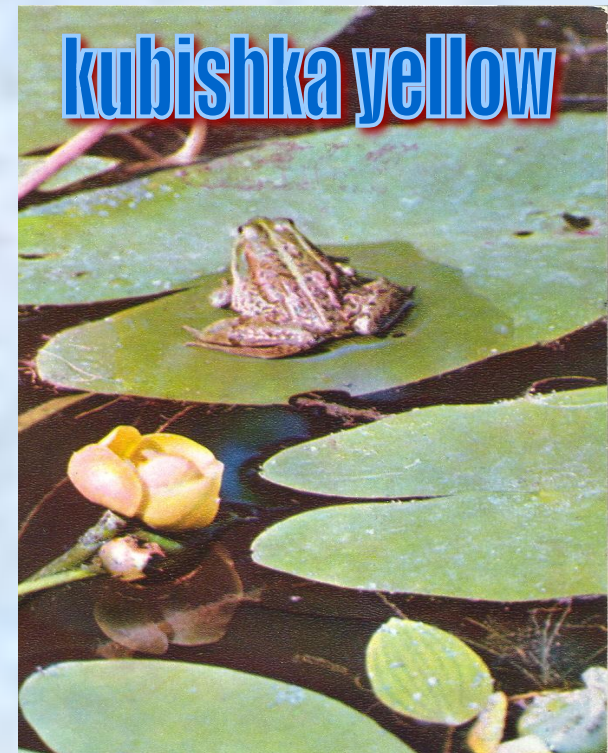
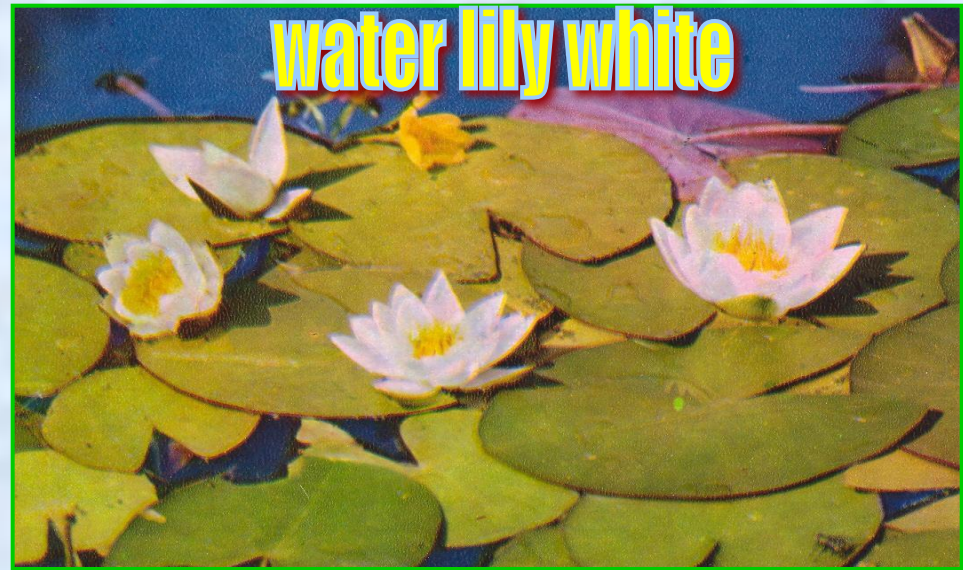
**Red bilberry**

# *Flowering plants.*

The world of flowering plants in Karelia is very various. Herbs predominate among them. Some of them winter without throwing leaves. There are some plants that blossom right away after melting snow, others blossom in summer. Because our investigations were made in July- August, we met such flowering plants:



- *Ranunculi*  
*different-leafbearing*  
*and ranunculi*  
*creeping*(fam. *ranunculi*)
- *Water-lily white* (fam. *Water-lily*)
- *Kubishka yellow* (fam. *Water-lily*)
- *Labaznik*  
(*meadow-sweet*  
*elm-leaves*) (fam. *rosaceae*)
- *Lapchatka straight*  
(fam. *rosaceae*)



- *Clover meadow (red)*
- *China meadow*



**china meadow**

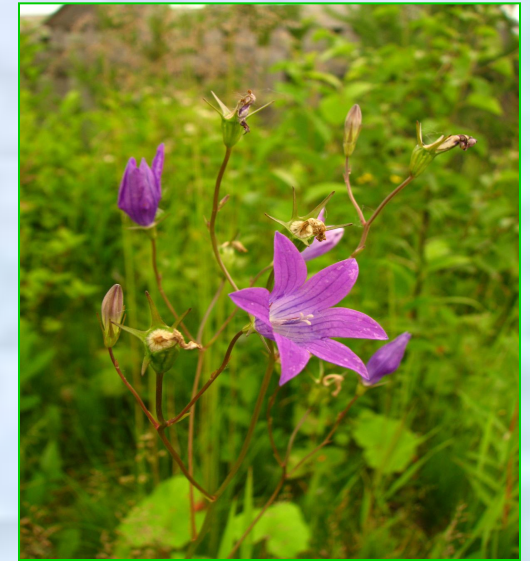
- ***St.-John'-wort  
holey(  
fam.St.-John's-wo  
rt)***
- ***Violet  
three-coloured  
(fam. violet)***
- ***Colza usual (fam.  
cruciferae)***
- ***Pastushya sumka  
(fam.criciferae)***

- **Vakhta with three leaves (family vakhtovie)**
- **Blue-bell with round leaves (family blue-bells)**
- **Vechernitsa usual (family criciferae)**
- **Ox-eye-daisy usual (family compositae)**



Ox-eye-daisy

Blue-bell



Vechernitsa usual

# *Our conclusions:*

- *We discovered 52 kinds of vascular plants. Mainly, they are wood kinds, but there are many meadow kinds too, because neighbourhoods are well assimilated by men into arable land.*
- *Investigations were made during the middle and at the end of summer and we could not find out the group of primroses, many of which are put into “The Red book of Karelia” .*

# *The list of used books and other sources .*

1. *« In the world of useful plants» N.P.Zaitseva, T.V. Belonogova, Publishing house «Karelia»,Petrozavodsk , 1990. 111 pages.*
2. *« Flowers of the North» YU.V.Linnik . Publishing house «Karelia»,Petrozavodsk, 1979. 111pages.*
3. *« Flowering plants» A.S. Lantratova, N.V.Lebedeva, Publishing house«Karelia», Petrozavodsk, 1983. 104 pages.*
4. *« Trees and bushes of Karelia» A.S.Lantratova, Publishing house «Karelia», Petrozavodsk 1991. 232 pages.*
5. *«Wood flowers» V.V.Trenin, Publishing house «Karelia», Petrozavodsk 1988. 72 pages.*
6. *« Red book of Karelia» Ministry of ecology and natural resources, Publishing house «Karelia»,Petrozavodsk1995. 28pages.*

# Thank you for your attention!

