



Gena LOR

Autor: Ciobanu Cristian

Coordonator: Badan Liliana

Characteristicile genei:

Pick Assembly
GCF_000001405.35 (GRCh38.p9)

Locations for Gene LOR

Sequence	Location
NC_000001.11	153,259,635 - 153,262,125

Select an assembly to change view

Ideogram View

1 2 3 4 5 6 7 8 9 10 11 12 13 14 15
16 17 18 19 20 21 22 X Y MT

Search
Location, gene or phenotype
Enter a location, gene name or phenotype

Your Data
Add Tracks
Region Details
History

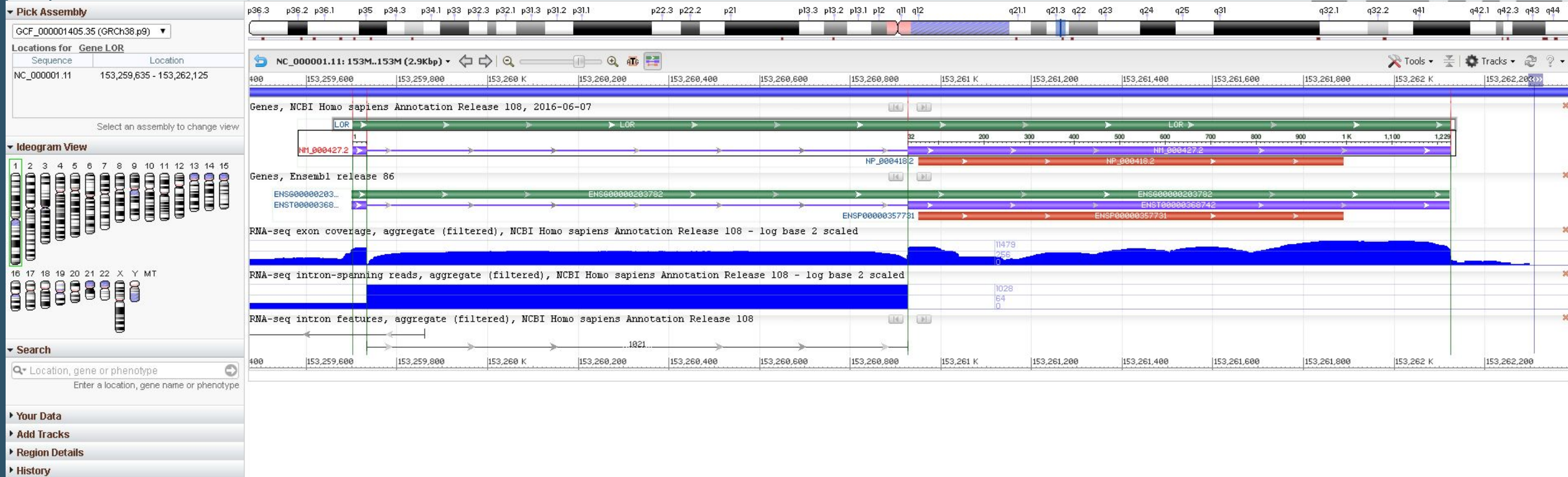
NC_000001.11: 153M..154M (1.5Mbp)

Genes, NCBI Homo sapiens Annotation Release 108, 2016-06-07

LOR
NM_000427.2 | NP_000418.2
RPLP... exon | RNU6-100P

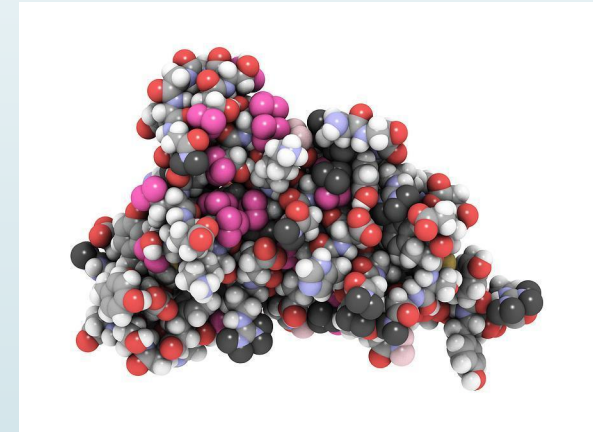
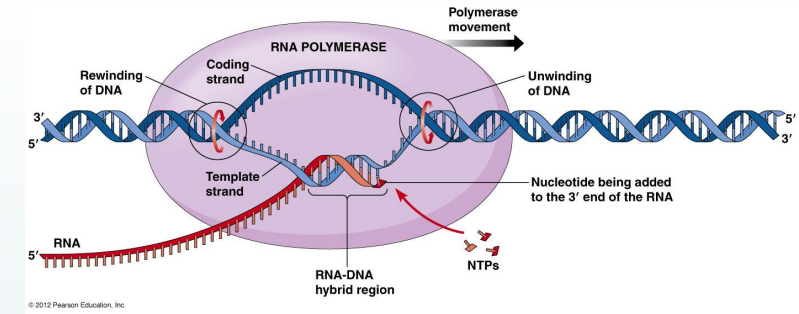
Structura

Genă de clasă II

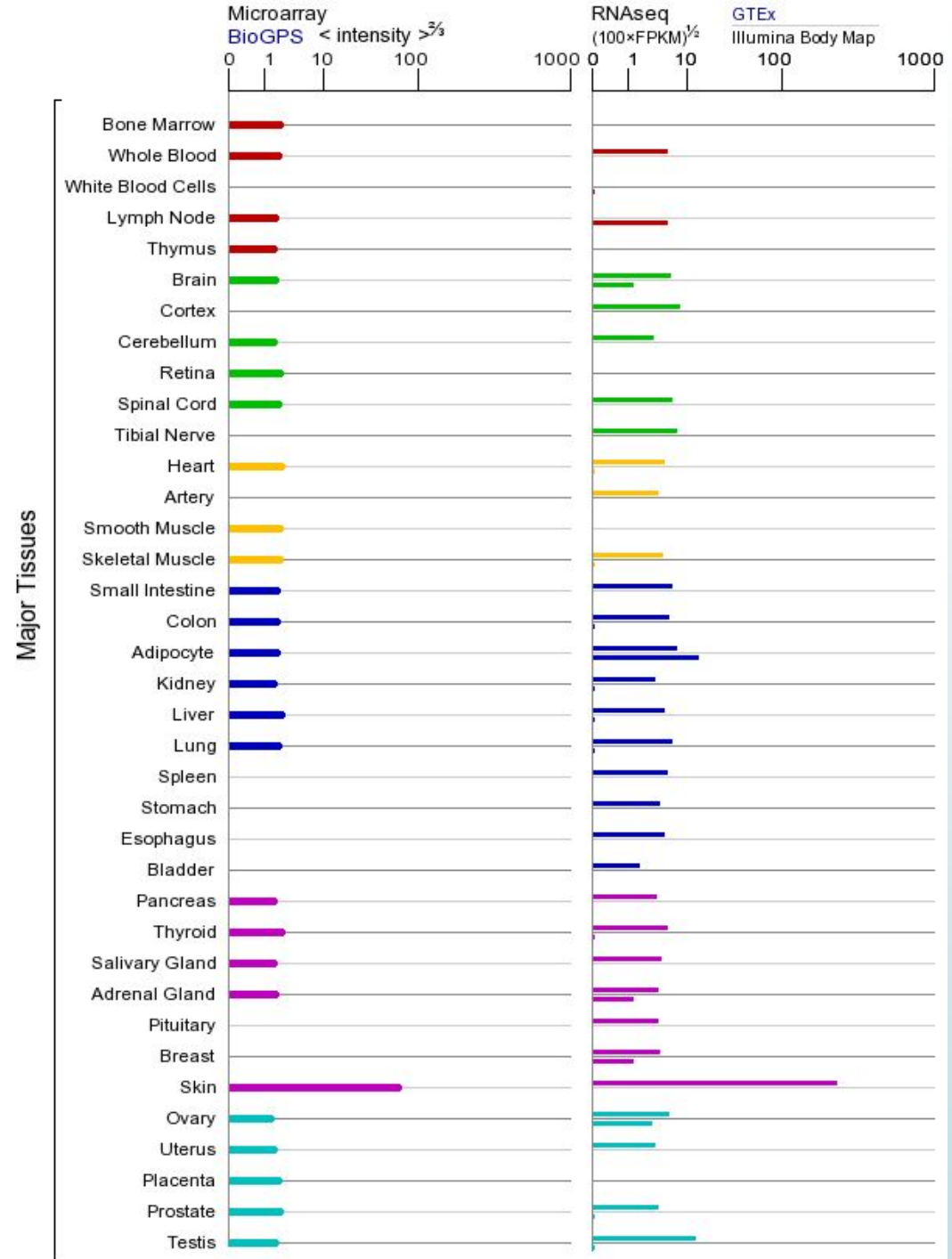


Funcții

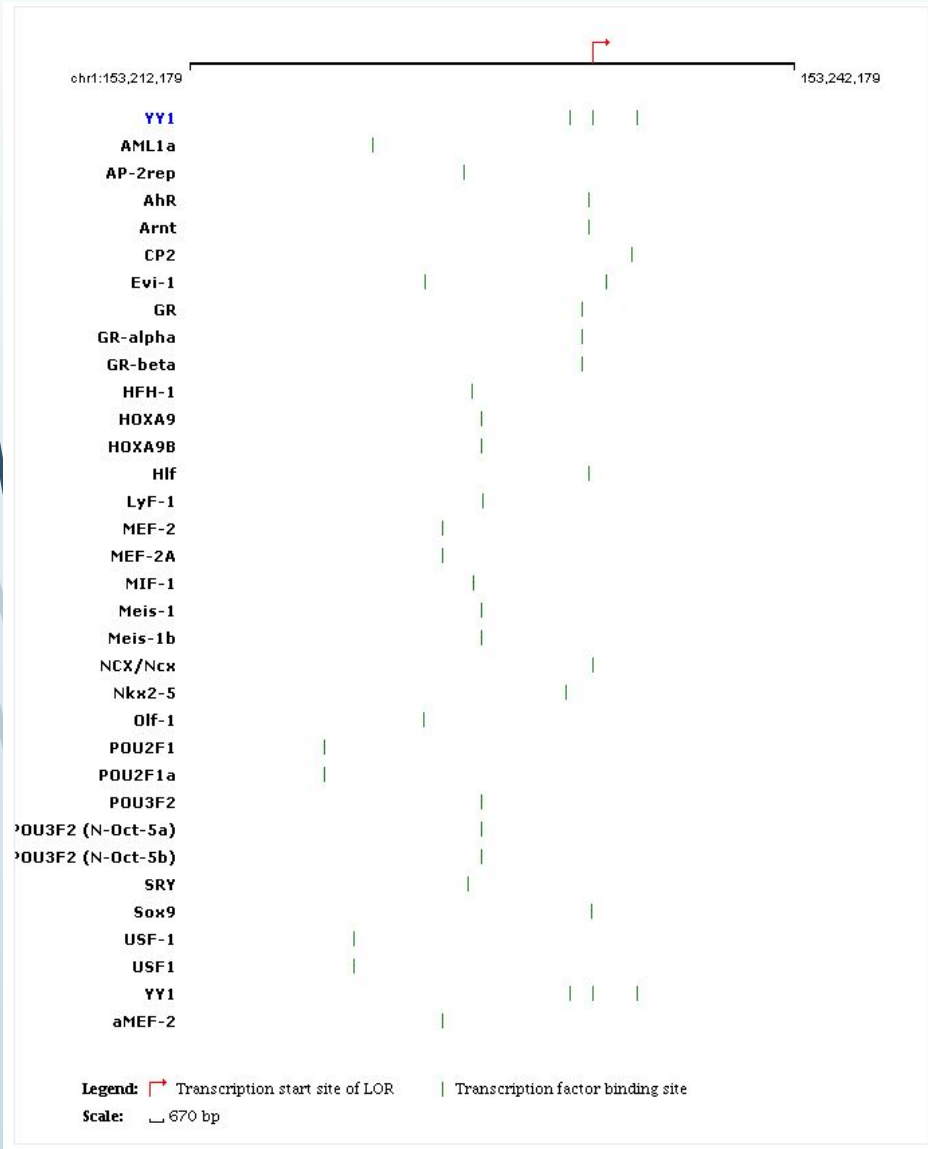
- Nivel molecular: codifica ARNm
- Nivel celular: translează ARNm-ul pe ribozomii RE rugos
- Nivel de organism: produce proteina Loricrin



Expresia



Reglarea expresiei



Boxe:

- Boxa TATA

Localizare: -20 ... -30

Secvența: 5' TATAATAAA3'.

Funcție: recunoscut de TFIID ce direcționează enzima ARN-polimeraza II spre situsul de inițiere al transcripției.

- Boxa CAAT

Localizare: -50 ... -130

Secvența : 5'GGCCAATCT3'

Funcție: controlează legarea proteinelor C/EPB (CAATbox/Enhancer Binding Protein) pentru inițierea transcripției

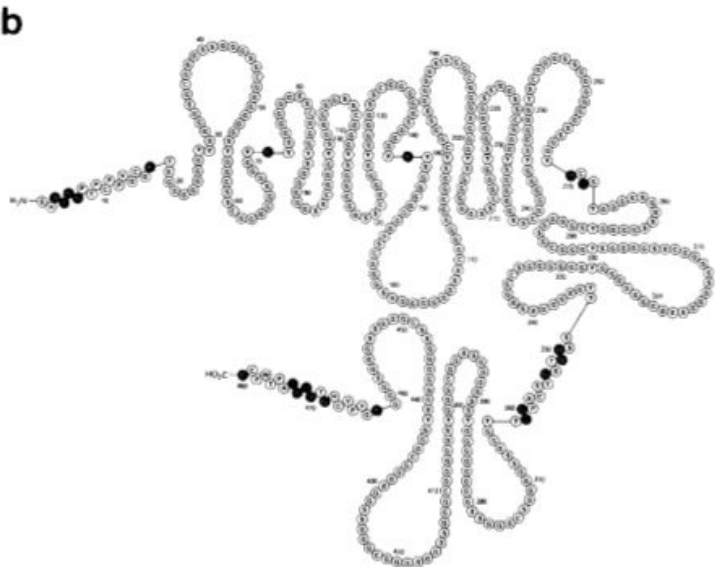
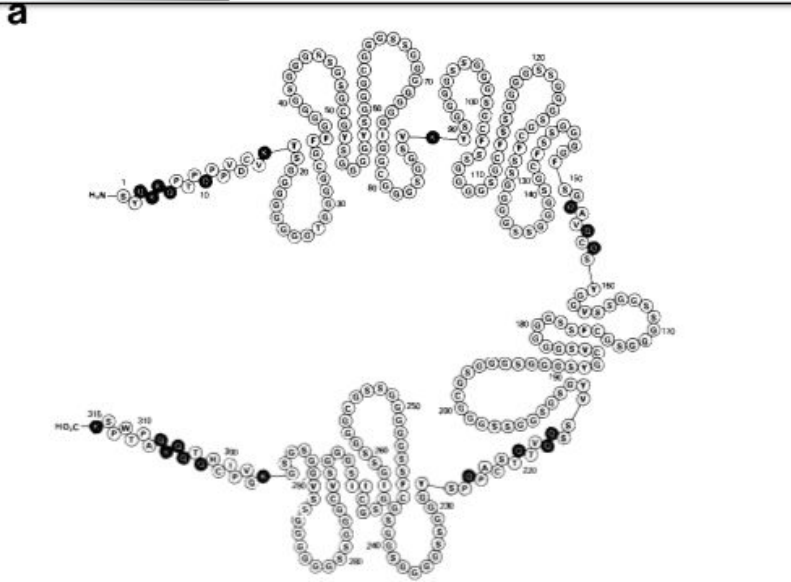
- Boxa GC

Localizare: -90

Secvența : 5'GGGCGG3'

Funcție: direcționează procesului de transcripție

Structura proteinei

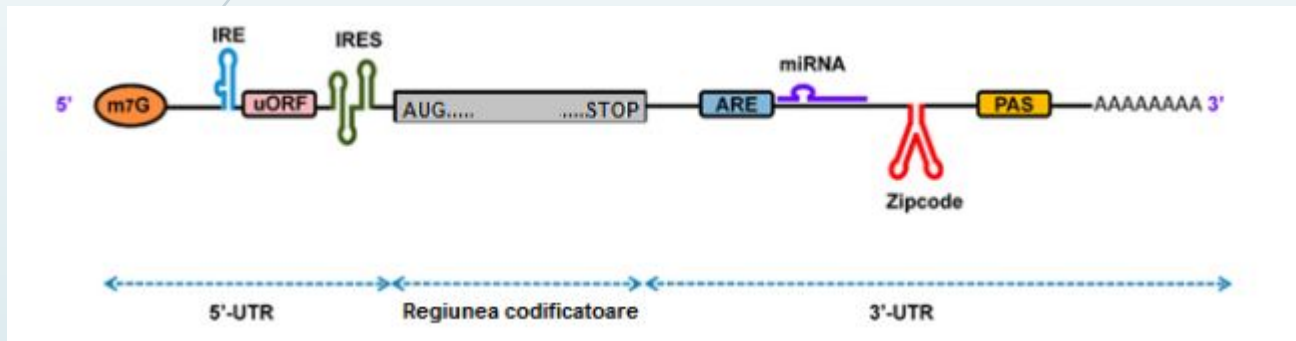


- Masă moleculară de 26kDa ($1\text{Da}=1.66\text{e-}27$)
- Bogată în Glycină, Serină și Cisteină
 - Cel mai înalt nivel de Gly din organism => insolubilitate
- Formează incluziuni sferice

a- forma la om

b- forma la șoarece

Sinteza și maturizarea



```

GGTGCCTTGGGCTCTCTCTCTCTCAGACAGATG 36
S Y Q K K Q P T P Q P P V D C V K T S G 20
TCTTATCAGAAAAAGCAGCCAGCCCTCAGCCCTCAGTGGACTGGCTGAGAGCTCTGGC 96
G G G G G G G T G G G G G C G F F G G G G 40
GGGGTGGGGTGGGGGGGAGGGGGGGTGGGGTGGGGTCTCTGGGGGGGGGGG 156
S G G G S S G S G C G Y S G G G G Y S G 60
TCAGGGGGGGTAGCAGGGGTCTGGCTGTGGCTACTCGGGGGGGTGGCTACTCTGGC 216
G G C G G G S S G G G G G G G I G G C G 80
GGGGTGGGGGGGGCTCTCTGGGGGGGGGGGGGGGGGGCATGGAGCTGGGA 276
G G S G G S V K Y S G G G G S S G G G S 100
GGGGTGGGGTGGGAGGTCAGTACTCGGGGGGGGGGGCTCTCTGGGGGGGGGGCTCT 336
G C F S S G G G G S G C F S S G G G G S 120
GGCTGTCTCTCAGGGTGGGGGGGGCTGGGGTGGCTCTCTCTCTGGGGGGGGGGCTCT 396
S G G G S G C F S S G G G G S S G G G S 140
TGGGGGAGGCTGGGGTGGCTCTCTCAGGGTGGGGGGGGGGCTCTCTGGGGGGGGGGCTCT 456
G C F S S G G G G F S G Q A V Q C Q S Y 160
GGCTGTCTCTCTGGGGGGGGGGGGCTCTCTGGGGCAGGGGGTCCAGTGGCAGAGCTAC 516
G G V S S G G S S G G G S G C F S S G G 180
GGAGGGTCTCTAGGGGGGGCTCTCTGGGGGGGGGGTGGGGTGGCTCTCTCAGGGGGGG 576
G G G S V C G Y S G G G S G G G S G C G 200
GGGGGGGGCTCTCTGGGGTACTCTGGGGGGGGGGCTCTGGGGGGGGGGCTCTGGGGTGGGG 636
G G S S G G S G S G Y V S S Q Q V T Q T 220
GGAGGCTCTCTGGGGCAGGGGGCTGGGGTGGGGTCTCTCTCAGCAGGGTCACTCAGAC 696
S C A P Q P S Y G G G S S G G G G S G G 240
TGGTGGGGGGGGGGGGGGTGGGGTGGGGGGGGGGGGGGGGGGGGGGGGGGGGGGGG 756
S G C F S S G G G G G S S G C G G G S S 260
AGGGCTGGCTCTCTCAGGGGGGGGGGGGGGGGGGGGGGGGGGGGGGGGGGGGGGGGG 816
G I G S G C I I S G G G S V C G G G S S 280
GGGATTGGCAGGGGGTGCATCATCAGTGGGGGGGGTGGGGTGGGGGGGGGGGGGGGG 876
G G G G G G S S V G G S G S G K G V P I 300
GGAGGGGGGGGGGGGGGGGGGGGGGGGGGGGGGGGGGGGGGGGGGGGGGGGGGGGG 936
C H Q T Q Q K Q A P T W P S K * 315
TGCCACAGACCCAGCAGAGCAGGGGGTACTGGGGGGTCCAAATAGATCCCCAGGGT 996
AGCAGGGGGGAGGGGTTGGAGGTGTCTTCCAGGGGGGGGGGGGGGGGGGGGGGGGGGG 1056
ATGATGCTAGCCGAGGTTCGAAATCTTCATGTCTTACCTACTGGAGAGGGCCATTTG 1116
AGCTCTGGGGTGCATCTAGTCTCTGGTGTGGGGTCTTTGGTCTCTGTACACTACTCT 1176
CCAGCCAGTGGCTCAGTCAATAAATTCGAAATTCATGAGAAAAAAGAAAAAAGAAAA 1236
AAAAAAAAAAAAAAAAAAAA 1256

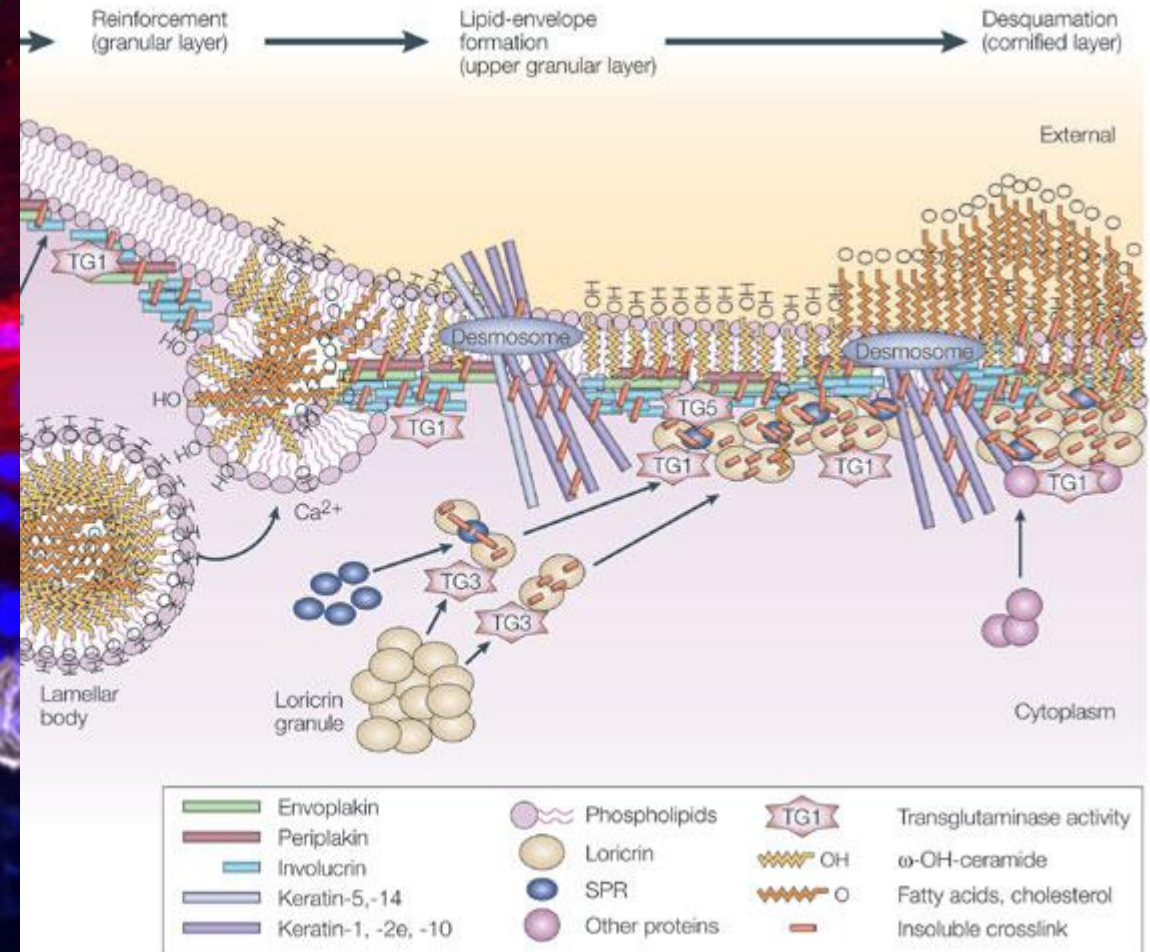
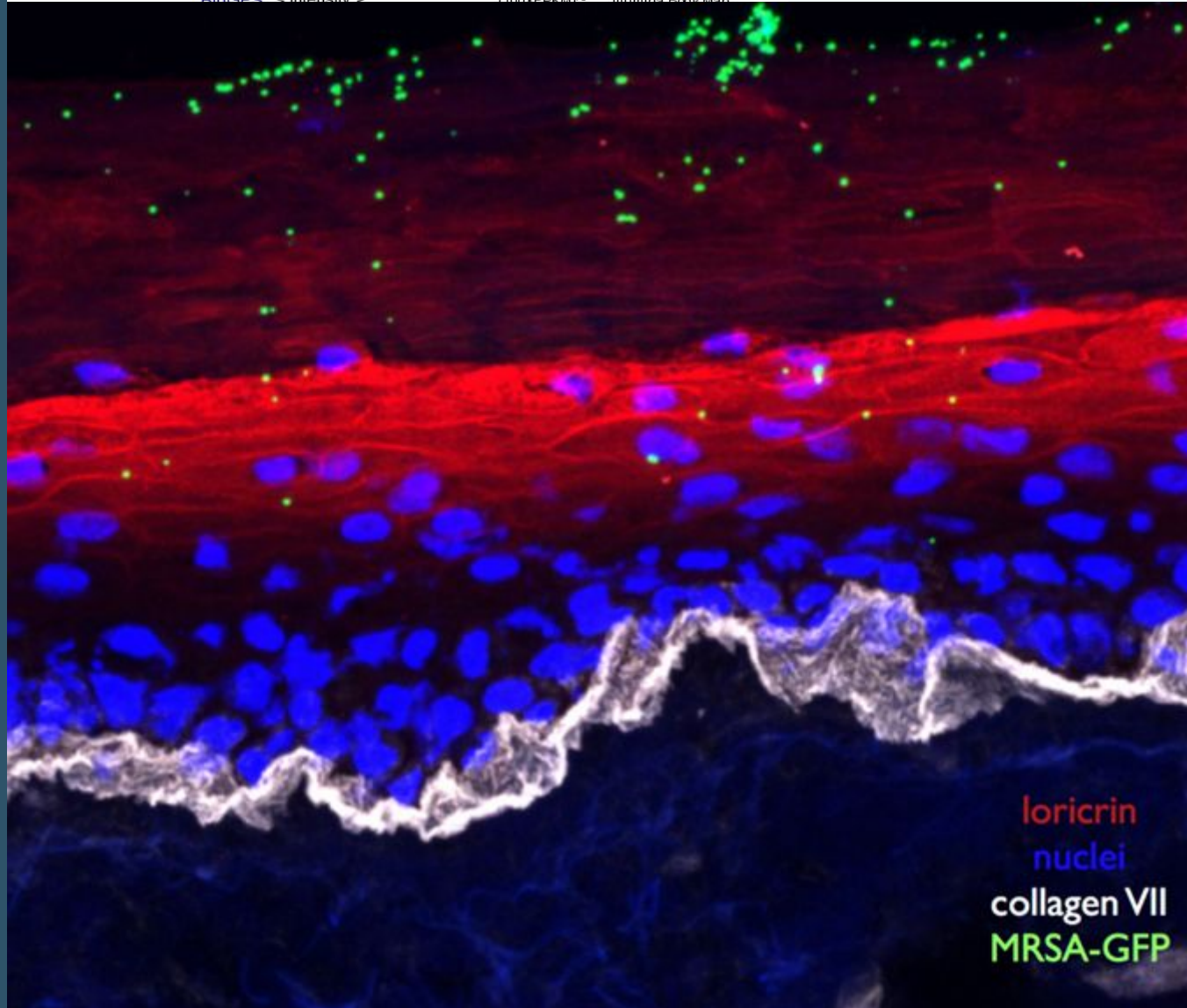
```


Localizare și interacțiuni

Microarray
BioGPS < intensity > 3/5

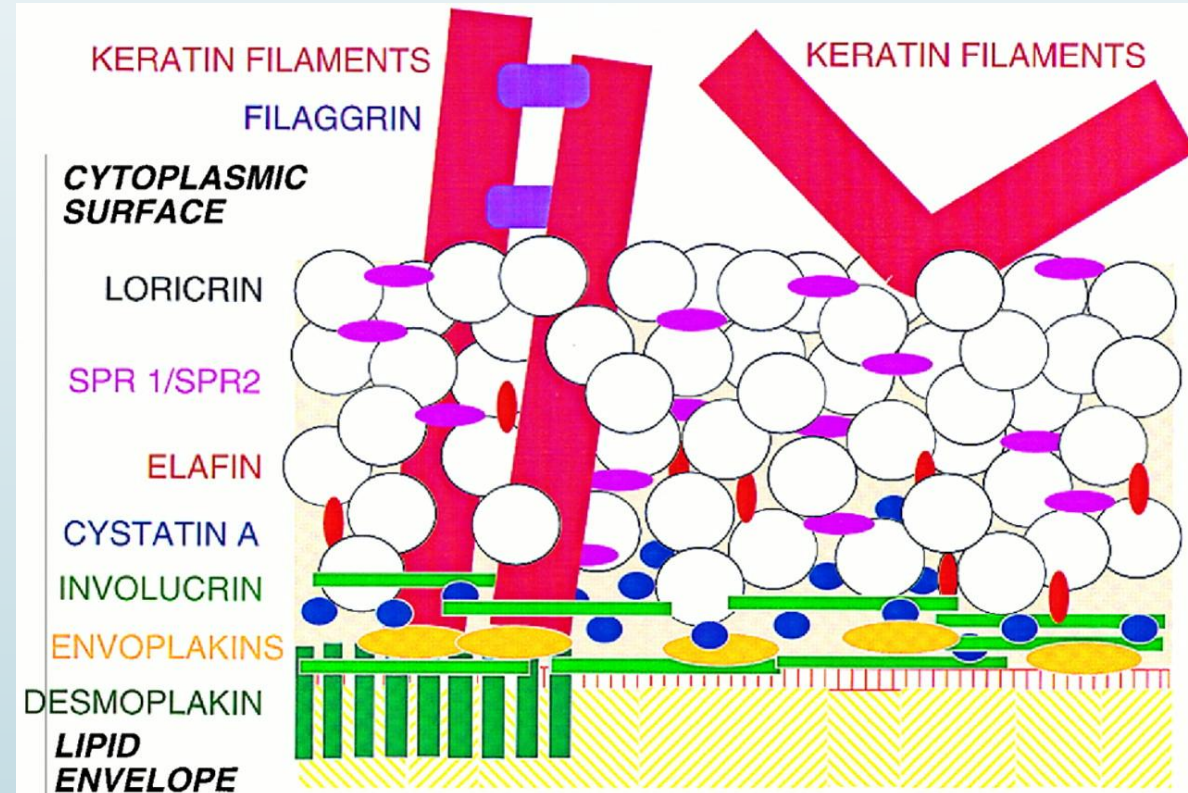
RNAseq
(100xEPK1) 3/5

GTEX
Illumina Body Map



Funcții

- Este o componentă principală a cheratinizării pielei
- Contribuie la funcția de barieră a anvelopei cornificate
- Protecție de acțiuni mecanice





Bibliografie

- http://www.genecards.org/cgi-bin/carddisp.pl?gene=LOR#genomic_location
- <http://omim.org/entry/152445>
- <https://www.ncbi.nlm.nih.gov/gene/4014>
- <https://www.ncbi.nlm.nih.gov/pmc/articles/PMC4451671/>
- <http://amievalab.stanford.edu/researchsa.html>
- Hohl D, Mehrelg T, Lichtig U, Turner ML, Roop DR, Steinert PM. Characterization of human loricrin. Structure and function of a new class of epidermal cell envelope proteins. J Biol Chem. 1991
- https://en.wikipedia.org/wiki/Palmoplantar_keratoderma
- https://www.google.com/search?q=honeycomb+keratoderma&biw=1920&bih=901&source=lnms&tbm=isch&sa=X&ved=0ahUKEwiM0ripkcbQAhUG2CwKHYp0DrUQ_AUIBigB
- <http://plasticsurgerykey.com/inherited-palmoplantar-keratodermas/>



Mulțumesc pentru atenție!