

# COMPARATIVE ADJECTIVES



small



smaller



difficult



more difficult



Sait Mete EKER  
Teacher of English

# COMPARATIVE ADJECTIVES

We use comparative adjectives to show change or make comparisons.

► We usually add **-er** to one-syllable adjectives.



old



older

young → younger

cold → colder

short → shorter

small → smaller

# COMPARATIVE ADJECTIVES

► If an adjective ends in *-e*, we add *-r*.



safe



safer

large → larger

nice → nicer

cute → cuter

close → closer

# COMPARATIVE ADJECTIVES

► We double the final letter of a one-syllable adjective ending in consonant + vowel + consonant and we add -er.



fat



fatter

big	→	bigger
sad	→	sadder
slim	→	slimmer
thin	→	thinner

# COMPARATIVE ADJECTIVES

► If an adjective ends in a consonant and -y, we change -y to -i and add -er.



happy



happier

dirty	→	dirtier
easy	→	easier
noisy	→	noisier
angry	→	angrier

# COMPARATIVE ADJECTIVES

► We use **more** to make comparatives for most two syllable adjectives and for all adjectives with three or more syllables.



hardworking



**more**

hardworking

generous → **more** generous  
beautiful → **more** beautiful  
punctual → **more** punctual  
stubborn → **more** stubborn  
selfish → **more** selfish  
honest → **more** honest

# COMPARATIVE ADJECTIVES

► With some two-syllable adjectives, we can either add -er/-r or use more.



handsome

handsomer

more handsome

polite → politer/more polite

simple → simpler/more simple

clever → cleverer/more clever

quiet → quieter/more quiet

narrow → narrower/more narrow

friendly → friendlier/more friendly

# COMPARATIVE ADJECTIVES

► Some one-syllable adjectives have irregular comparative forms.



**bad**



**worse**

good → better

far → farther/further

little → less





# ACTIVITY



1

**Make comparisons with  
the adjectives above.**

TALL



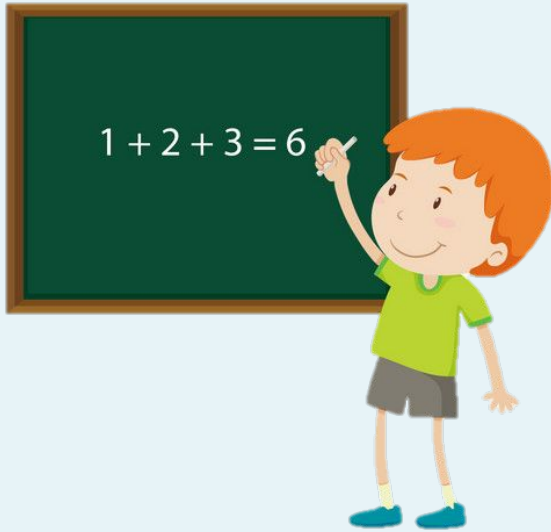
**LeBron James**  
**2,06 m**



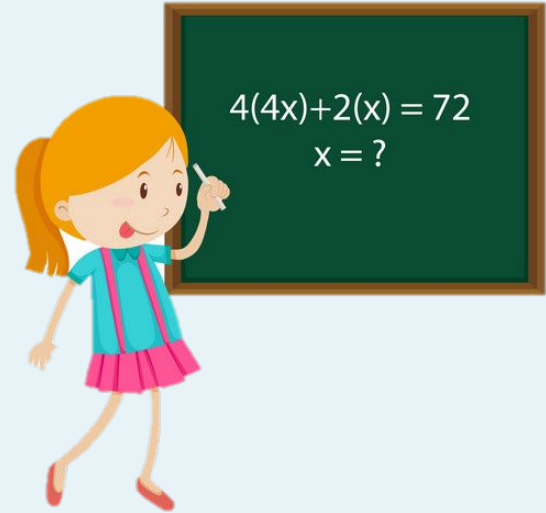
**Anthony Davis**  
**2,08 m**

Anthony Davis is taller than LeBron James.

# EASY



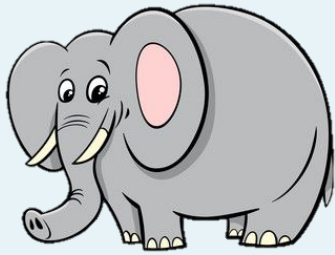
**Carl's question**



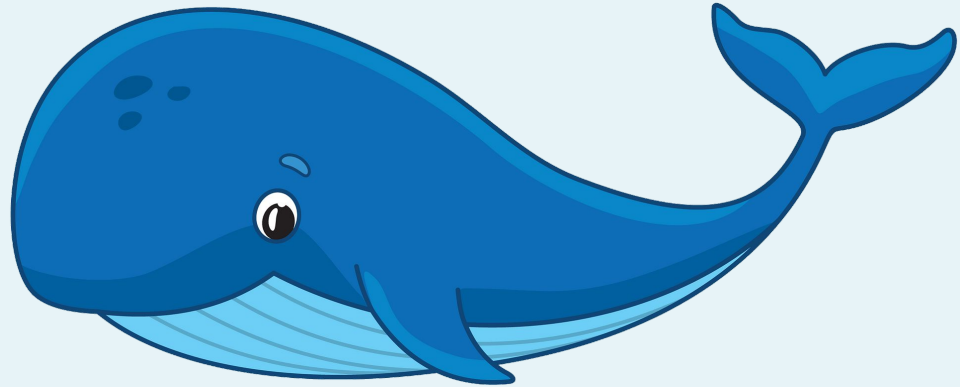
**Lisa's question**

Carl's question is easier than Lisa's question.

# BIG



**Elephant**



**Whale**

Whale is bigger than elephant.

# LARGE



**Green apple**



**Red apple**

The green apple is larg**e**r than the red apple.

# EXPENSIVE



**Blue tshirt**



**Green tshirt**

The blue tshirt is **more** expensive than the green tshirt.

# GOOD



**Fred's marks**



**Ted's marks**

Ted's marks are **better** than Fred's marks.



# ACTIVITY



2

**Read the information  
and circle the correct  
comparative adjective.**





Carrari



Carsubishi

**-Price**

\$150.000

\$45.000

**-Model year**

201

201

5

9

**-Top speed**

265 km/h

190 km/h

Carsubishi is more expensive / cheaper than Carrari.





Carrari



Carsubishi

**-Price**

\$150.000

\$45.000

**-Model year**

201

201

5

9

**-Top speed**

265 km/h

190 km/h

Carrari is older / newer than Carsubishi.





Carrari



Carsubishi

**-Price**

\$150.000

\$45.000

**-Model year**

201

201

5

9

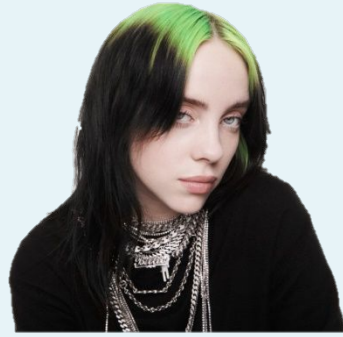
**-Top speed**

265 km/h

190 km/h

Carrari is faster/ slower than Carsubishi.





Billie Eilish



Taylor Swift

-Age

1

30

-Height

8

1,61

1,78

m

m

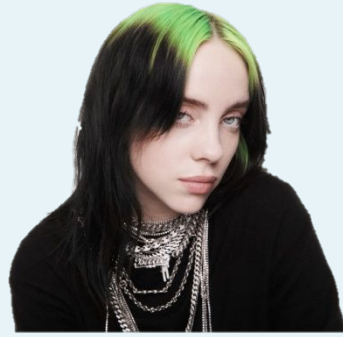
-Wealth

\$ 7 Million

\$ 12 Million

Billie Eilish is older/ younger than Taylor Swift .





Billie Eilish



Taylor Swift

-Age

1

30

-Height

8

1,61

1,78

m

m

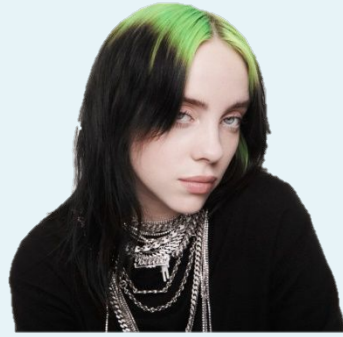
-Wealth

\$ 7 Million

\$ 12 Million

Taylor Swift is taller/ shorter than Billie Eilish.





Billie Eilish



Taylor Swift

-Age

1

30

-Height

8

1,61

1,78

m

m

-Wealth

\$ 7 Million

\$ 12 Million

Taylor Swift is richer/ poorer than Billie Eilish.



THE  
END

to be continued...