



# Was and were

Click below the question to reveal the answer.

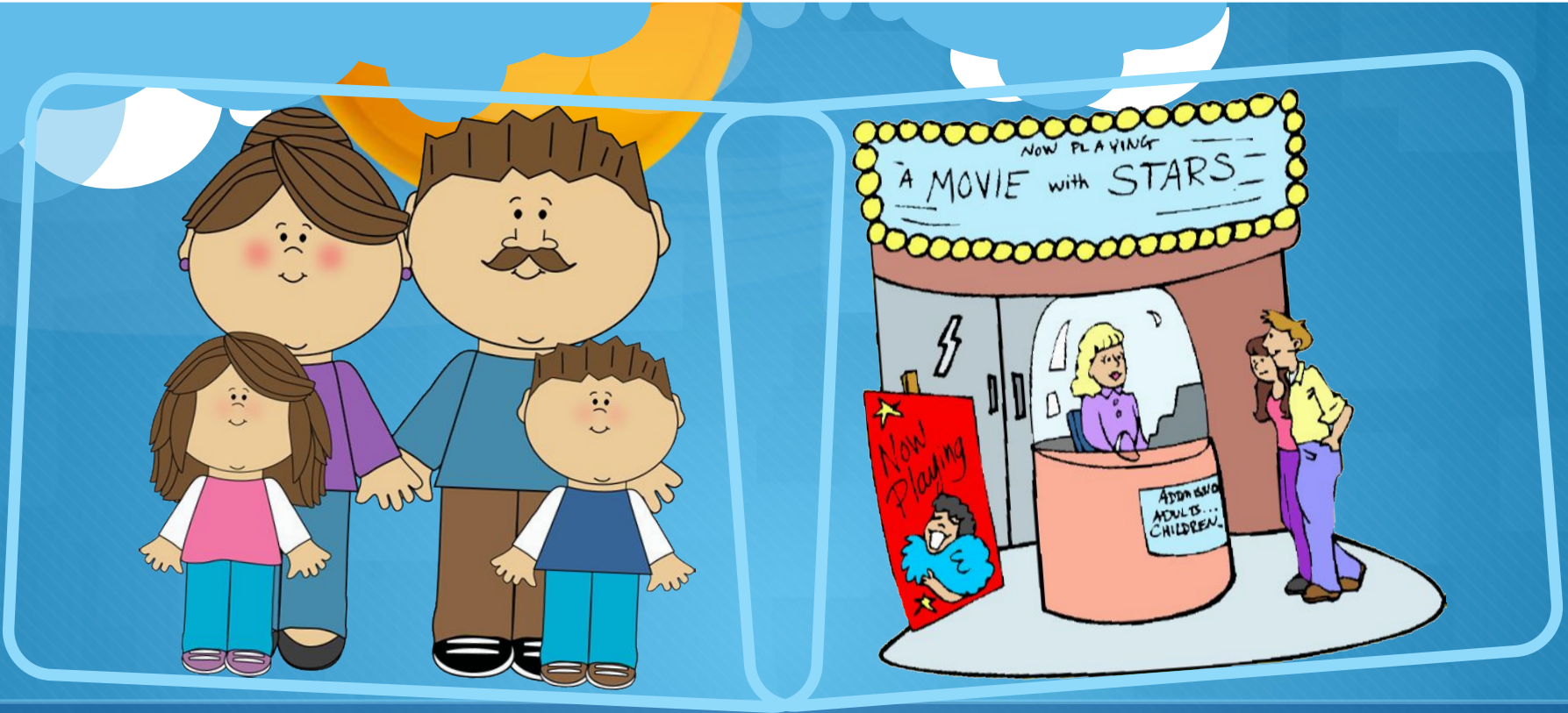


Where was Tim on Saturday?  
**On Saturday he was at home.**



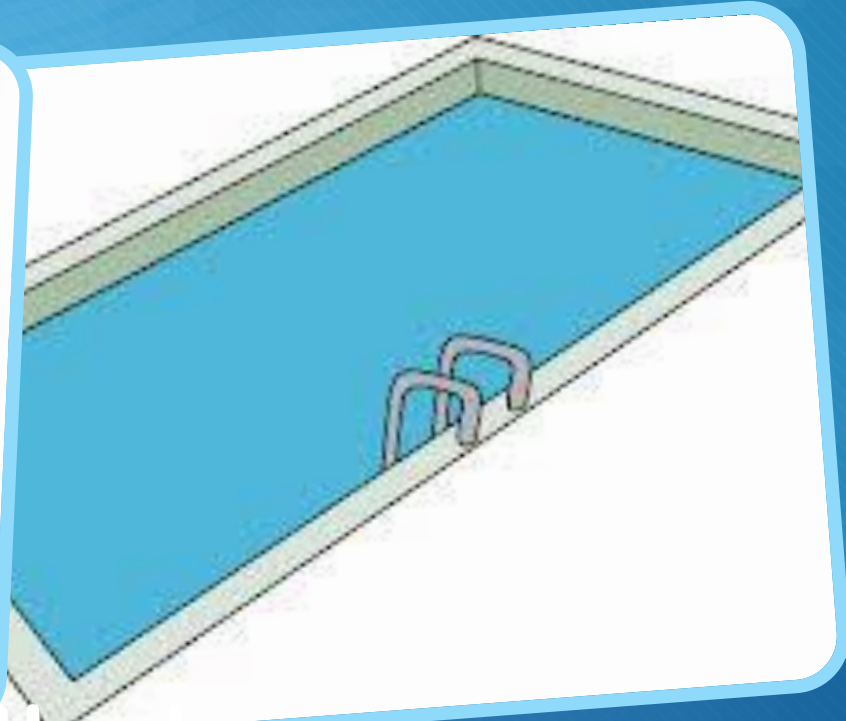
Where were Julia and Nancy on Sunday?

**On Sunday they were at the park.**



Where were you and your family  
on Monday?

**On Monday we were at the cinema.**



Where were the boys on  
Tuesday?

On Tuesday they were at the  
swimming pool.



Where was Melanie on Friday?  
On Friday she was at the restaurant.



**Answer these questions.**

Then, say the correct sentence.



Was Tim at the park yesterday?

**No, he wasn't.**

**He was at the cinema.**





Where the boys at the swimming pool on Saturday?

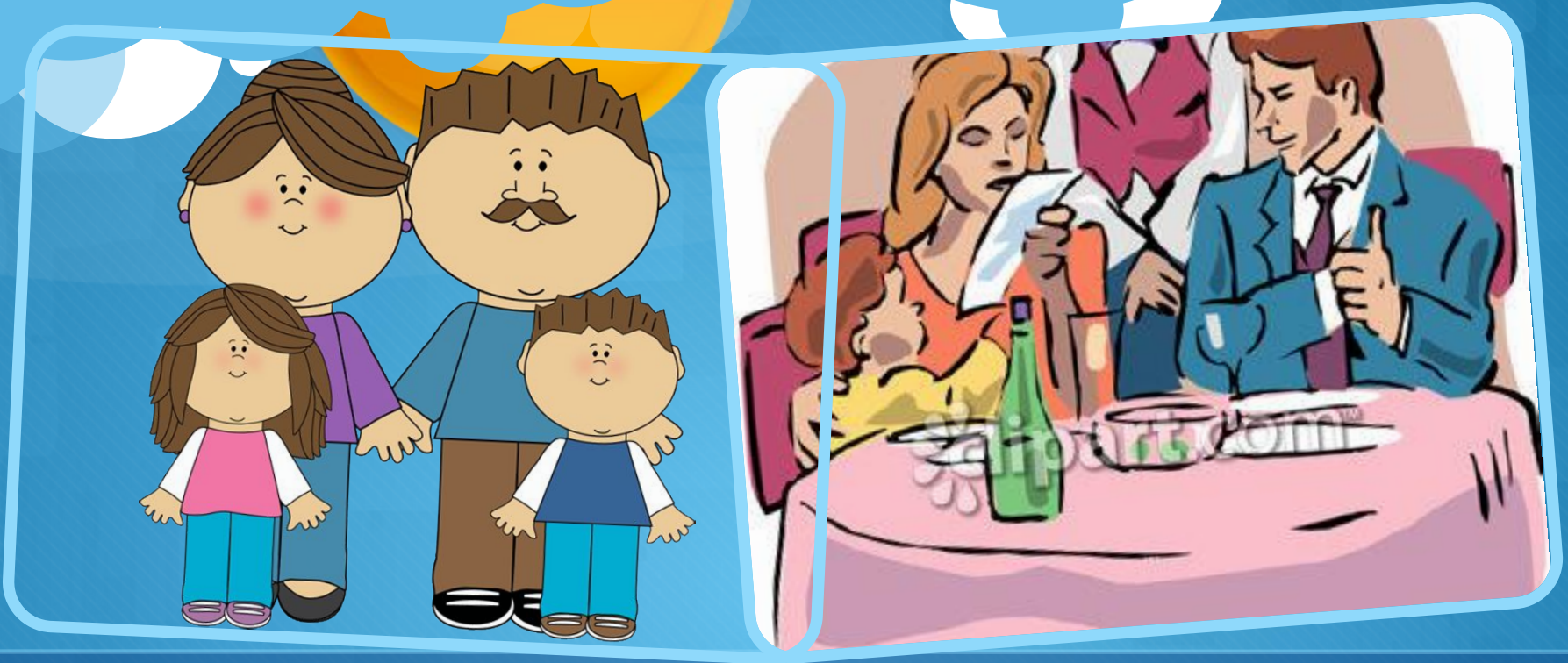
**No, they weren't.  
They were at home.**



Was Melanie at home on Monday?

**No, she wasn't.**

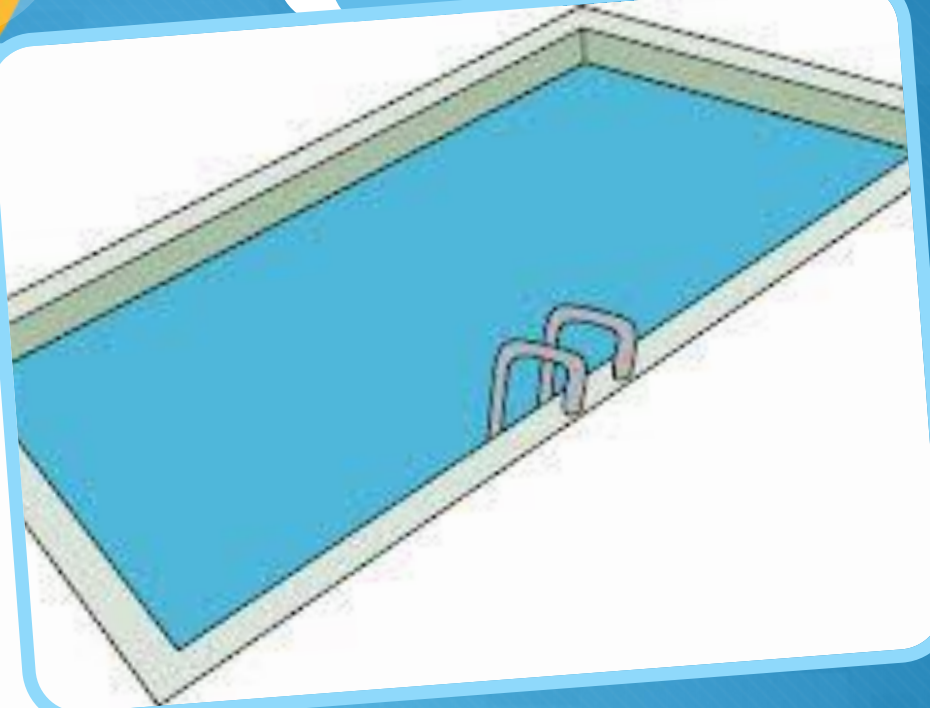
**She was at the park.**



Were you and your family at the cinema on Sunday?

**No, we weren't.**

**We were at the restaurant.**



Were Julia and Nancy at home on  
Wednesday?

**No, they weren't.**

**They were at the swimming pool.**



**Make negative sentences**

Use the cues to help you.

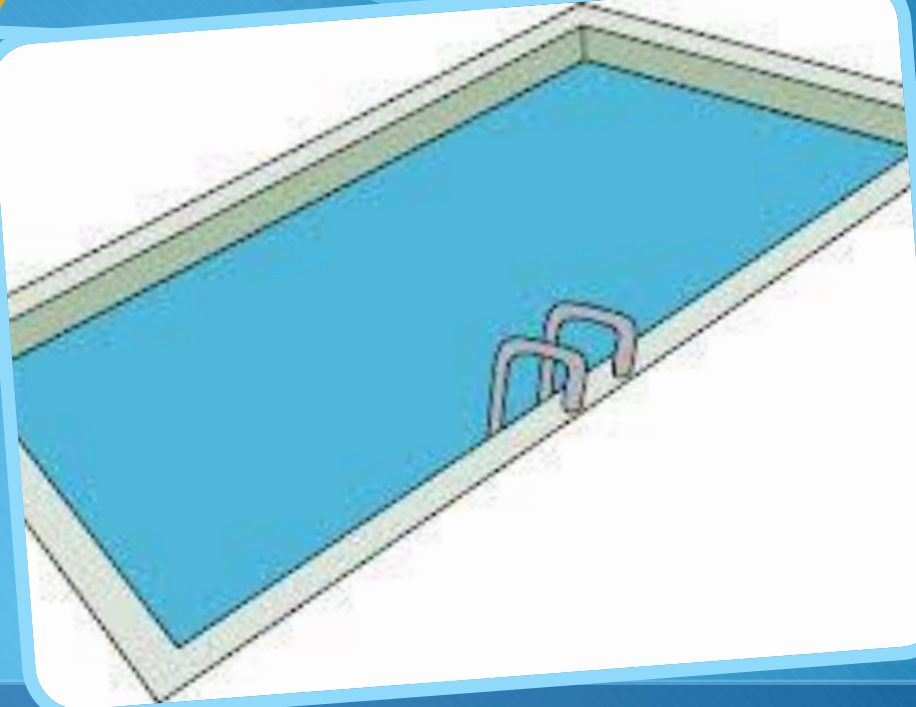


Tim / at home / yesterday .  
**Tim wasn't at home yesterday.**



Julia and Nancy / at the park / on  
Saturday.

Julia and Nancy weren't at the park  
on Saturday.



My family and I / at the swimming  
pool / on Tuesday.

**My family and I weren't at the  
swimming pool on Tuesday.**





Melanie / at the cinema / on  
Friday.

**Melanie wasn't at the cinema on  
Friday.**



The boys / at the restaurant / on Thursday.

The boys weren't at the restaurant on Thursday.



Let's talk about you!

Were were you?

A stylized illustration of a bright yellow sun with a small blue circle in the center, partially obscured by blue and white clouds. The background is a gradient of blue with a pattern of light blue squares.


Were were you on  
Sunday?

A decorative header featuring a bright yellow sun with a blue circle in the center, partially obscured by stylized blue and white clouds. The background is a solid blue color with a subtle pattern of lighter blue squares.

Were were you  
yesterday?

A stylized illustration of a bright yellow sun with a small blue circle in the center, partially obscured by blue and white clouds. The background is a gradient of blue with a faint grid pattern.

Were were you this  
morning?

A decorative header featuring a bright yellow sun with a blue circle in the center, partially obscured by stylized blue and white clouds. The background is a solid blue color with a subtle pattern of lighter blue squares.

Were were you on  
Saturday?



Were you at home this morning?





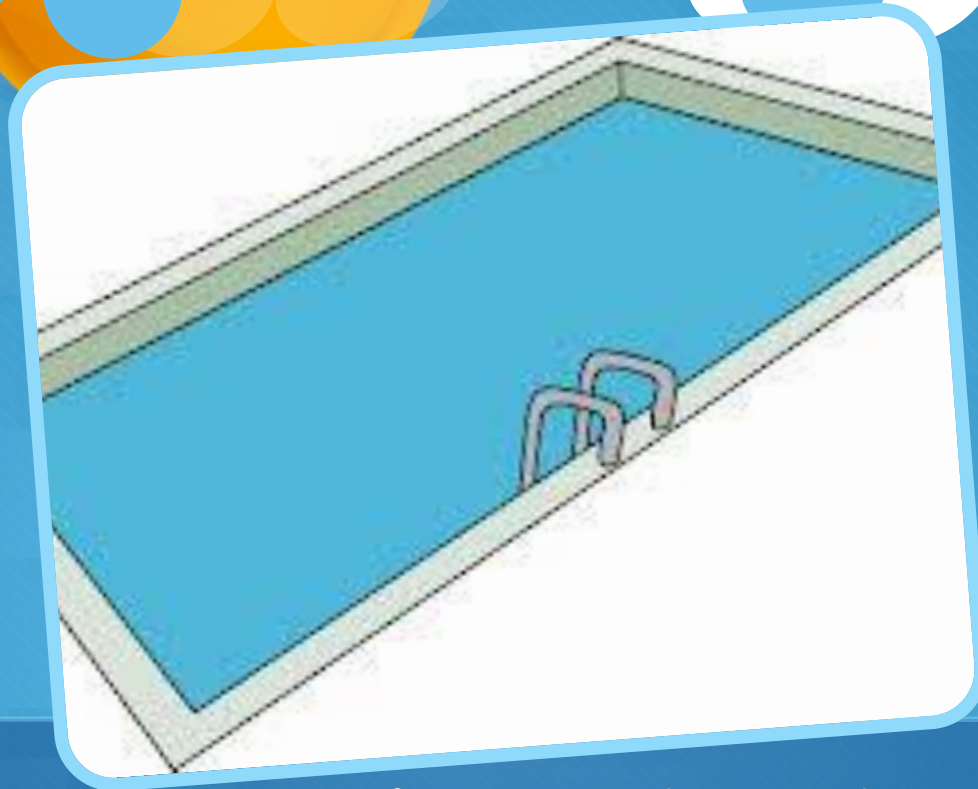
Were you at the restaurant on  
Saturday?



Were you at the park yesterday?



Were you at the cinema on  
Sunday?



Were you at the swimming pool  
on Friday?