

WHO'S WHO?



wikiHow

APPEARANCE

BUILD



skinny



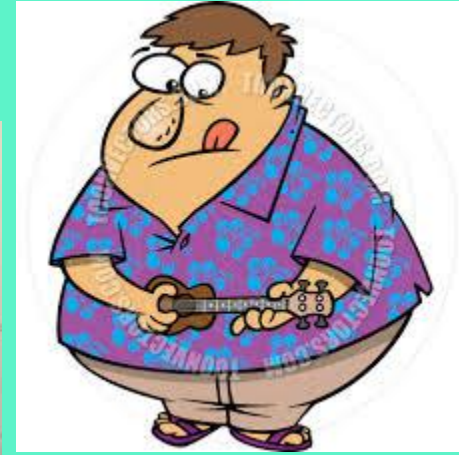
thin



slim



BUILD



well-built

heavily built

plump

fat



AGE



baby



child



teenager



young



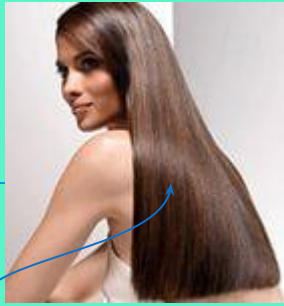
middle-aged



old

in his/her twenties

в возрасте между 20
и 29; за 20



short

long

shoulder-length

bald

HAIR



pigtails

curly

wavy

straight

spiky

HAIR



COLOUR

dark

fair



grey

blond(e)

red

brown

HEIGHT

tall

of medium
height

short





thin

pretty

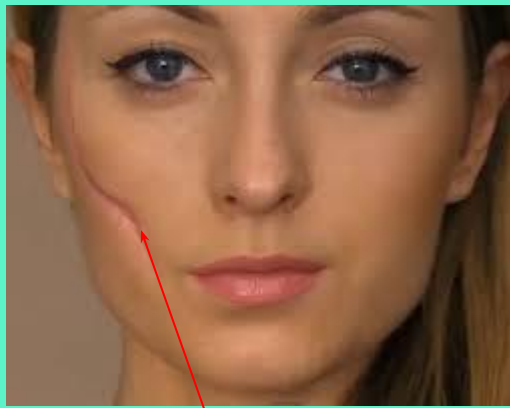
cute

ugly

FACE

round





scar



beard



moustache

FACIAL FEATURES



freckles



dark tan

Pronounce the sounds and read the words

/aɪ/ child, height, spiky

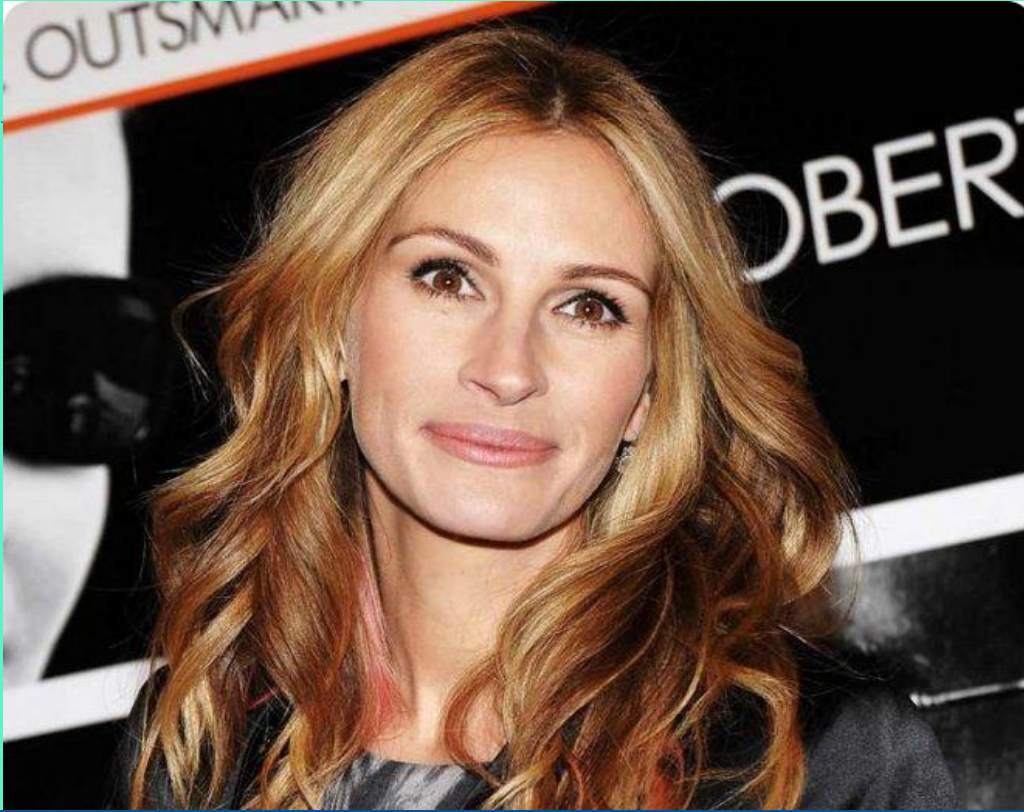
/ɔː/ short, bald

/ɑː/ moustache, scara

/eɪ/ grey, middle-aged, straight



Choose the correct word to describe the picture



She is *old/middle-aged*.

She has *short/long* hair.

Her hair is *straight/wavy* and *blonde/brown*.

Her face is *ugly/pretty*.

Choose the correct word to describe the picture



He is a *teenager/middle-aged*
man with *grey/dark*
short/shoulder-length
curly/spiky hair.

He is *skinny/well-built*.



Listen and find the correct picture



Describe the people whose description wasn't
given

Choose a character p.28. Your partner asks you yes/no questions to find out who the character is.

-Is it he or she?

-Is he/she thin?

-Does he/she have wavy hair?

Yes, it is. /No, it isn't. It is she.

Yes, she does./No, she doesn't.

She has ...