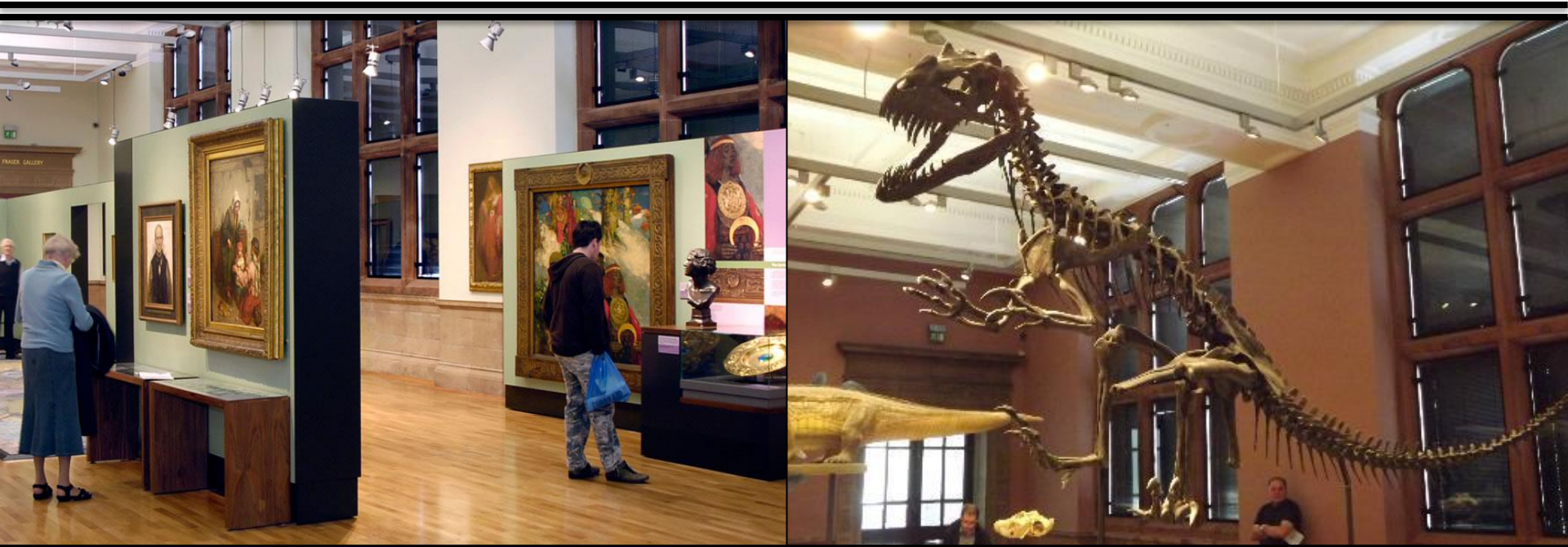




The Kelvingrove Art Gallery and Museum



Kelvingrove Art Gallery and Museum houses one of Europe's great art collections. It is the most popular free-to-enter visitor attraction in Scotland and the most visited museum in the United Kingdom outside London.

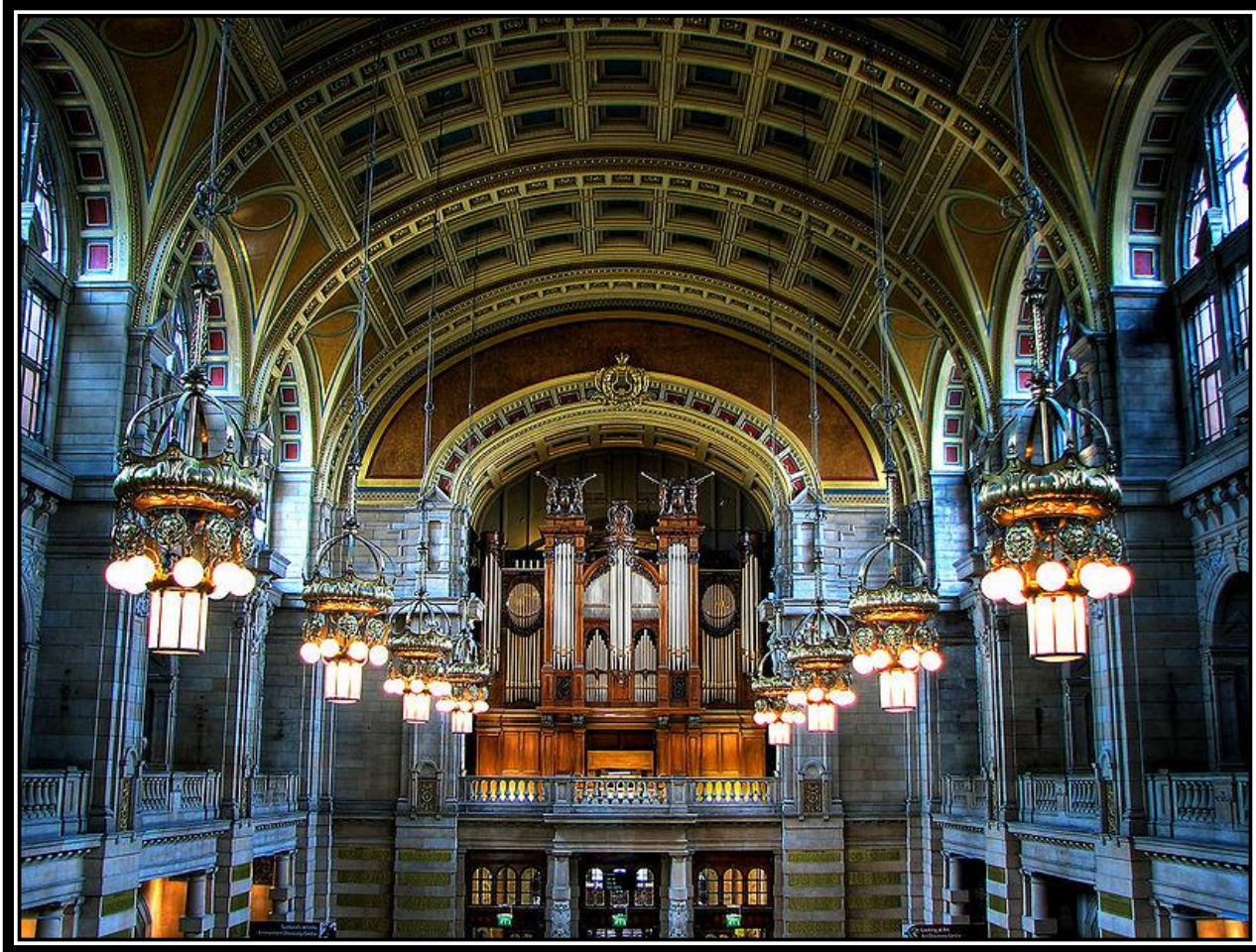


With 22 themed state-of-the-art galleries displaying an astonishing 8,000 objects, there's so much to explore and the museum is a brilliant place to easily wile away several hours, if not longer!

- The impressive building, a Spanish Baroque-style palace constructed of Dumfriesshire red sandstone, opened as an art gallery in 1901.
- It was reopened in July 2006 after a three-year, £28 million major refurbishment and restoration project.



It was organised into two halves:
Life and Expression.



The Central Hall



The Life galleries represent natural history, human history and prehistory.



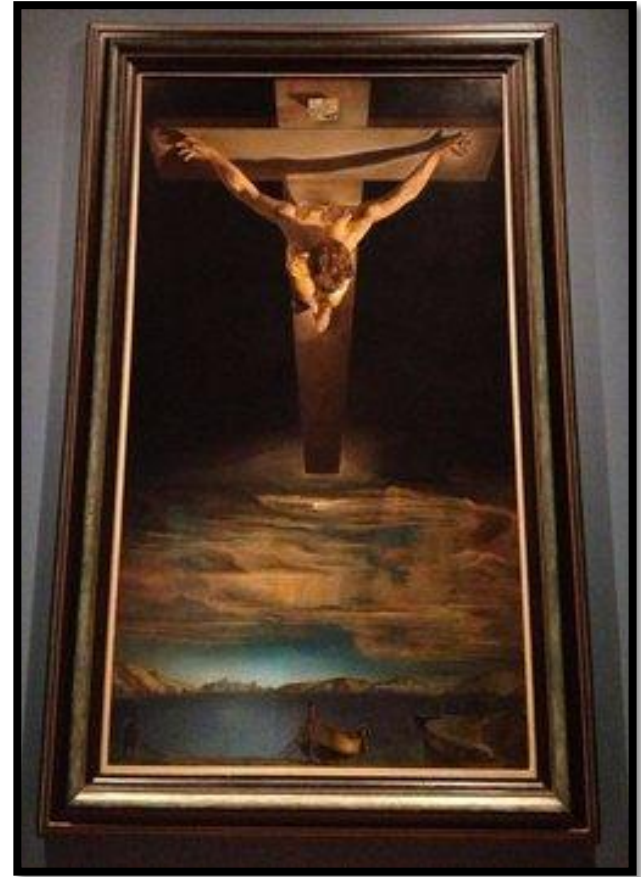


The Spitfire F.21 LA198
(a classic WWII fighter plane)

The Expression galleries include the fine art collections.



Man in Armour,
Rembrandt
(1655)



Christ of St John
of the Cross,
Salvador Dali (1951)



Christ and the Adulteress, Titian (1510)



The Floating Heads by Sophie Cave

Local myth

Kelvingrove was accidentally built back to front and, when it was complete, the architect was so disappointed he jumped to his death from one of the building's towers.



Kelvingrove from the South East



Argyle Street Entrance

Kelvingrove welcomes families, its displays having been designed with children in mind.



Besides all the exhibits, Kelvingrove has a restaurant, a café and a gift shop.



VISITOR INFORMATION



- Admission is free for all.
- Address: Argyle St, Glasgow, United Kingdom
- Opening Hours: Monday to Thursday & Saturdays: 10am-5pm
Fridays & Sundays: 11am-5pm
- Full access for the disabled.



Thank you for your attention!