

## COURSE PAPER

- The final work of the “Colour Psychology” course is a *course paper* – an analytic investigation on the colour expression of an image or film as:
  - the type of colours
  - the degree of saturation and value
  - the organization and interaction of colours
- The analysis of an image (images) should be done in two directions as:
  - The visual determination of colours.
  - The explanatory text of 3 – 5 A4 sheets.
- The text and the visual analysis are logically and thematically interconnected parts of the course paper.



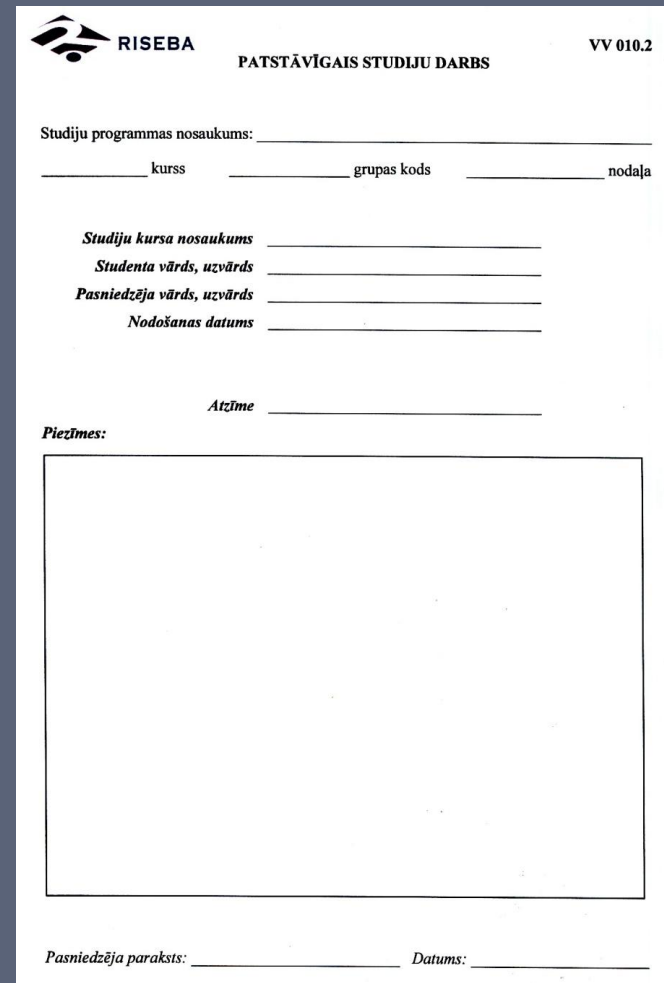
*Sin City*. Frank Miller & Robert Rodriguez, 2005




*For a Few Dollars More. Sergio Leone's 'spaghetti western', 1965*

# TITLE PAGE

1. The **TITLE PAGE** contains the following information:
  - The name of the course,
  - The name&surname of the student,
  - The name of the study programme and the year of studies,
  - The name of the teacher,
  - The date,
  - Student's signature.



 **RISEBA** **PATSTĀVĪGAIS STUDIJU DARBS** VV 010.2

Studiju programmas nosaukums: \_\_\_\_\_  
\_\_\_\_\_ kurss \_\_\_\_\_ grupas kods \_\_\_\_\_ nodaļa

*Studiju kursa nosaukums* \_\_\_\_\_  
*Studenta vārds, uzvārds* \_\_\_\_\_  
*Pasniedzēja vārds, uzvārds* \_\_\_\_\_  
*Nodošanas datums* \_\_\_\_\_

*Atzīme* \_\_\_\_\_

**Piezīmes:**

*Pasniedzēja paraksts:* \_\_\_\_\_ *Datums:* \_\_\_\_\_

## COMPONENT PARTS

2. The **INTRODUCTION** explains:
  - The reasons of the selection of the image or film - personal interests, intrigue, professional survey, etc.
  - The basic information about the theme.
  
3. The **BODY TEXT**:
  - Explores the object of visual investigation in the historical, iconographical and factographical aspects;
  - Analytically explains the process of work-out;
  - Provides arguments on the observations and clarify the solutions.
  
4. The **IMAGES** are the visual material used for the research.



## OBJECTS OF INVESTIGATION

The images should be selected from the films – fragments from new or classical, cartoons, serials, adverts, etc.



↑ *Sin City*, 2005



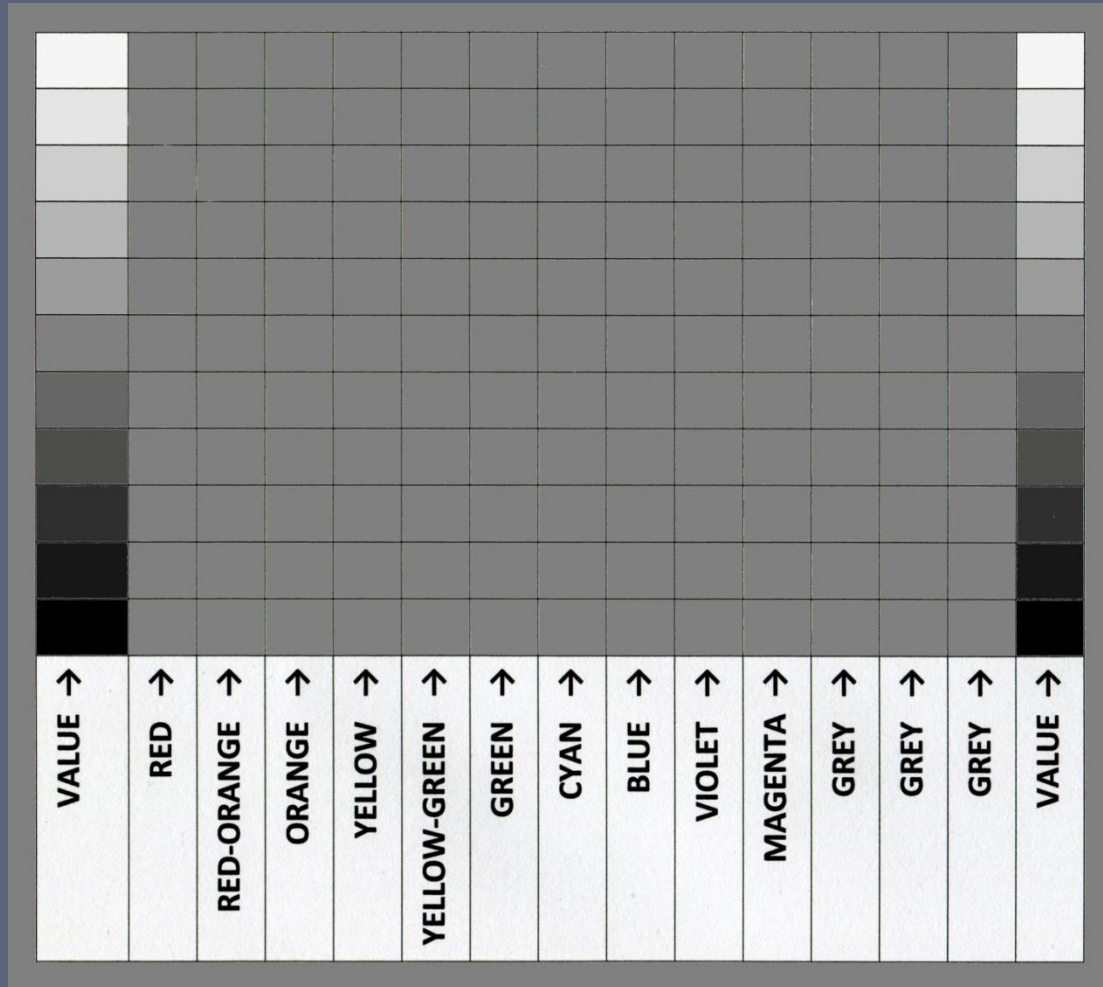
← *Gone With the Wind*.  
David O.Selznik, 1939



↑ *Gone With the Wind*, 1939

<https://www.youtube.com/watch?v=XAnNvnVijpo>

The colour expression of an image or film should be interpreted and visually demonstrated organizing of colours in the 'colour aquarium.'







*Who Framed Roger Rabbit.*  
Robert Zemeckis, 1988



The structure of colours should be investigated in the following directions:

1. Applying the criteria of colour evaluation:
  - the spectral origin,
  - saturation,
  - tonal value.
2. Defining the colour palettes.
3. Explaining colour expression on both symbolic and formal aspects.



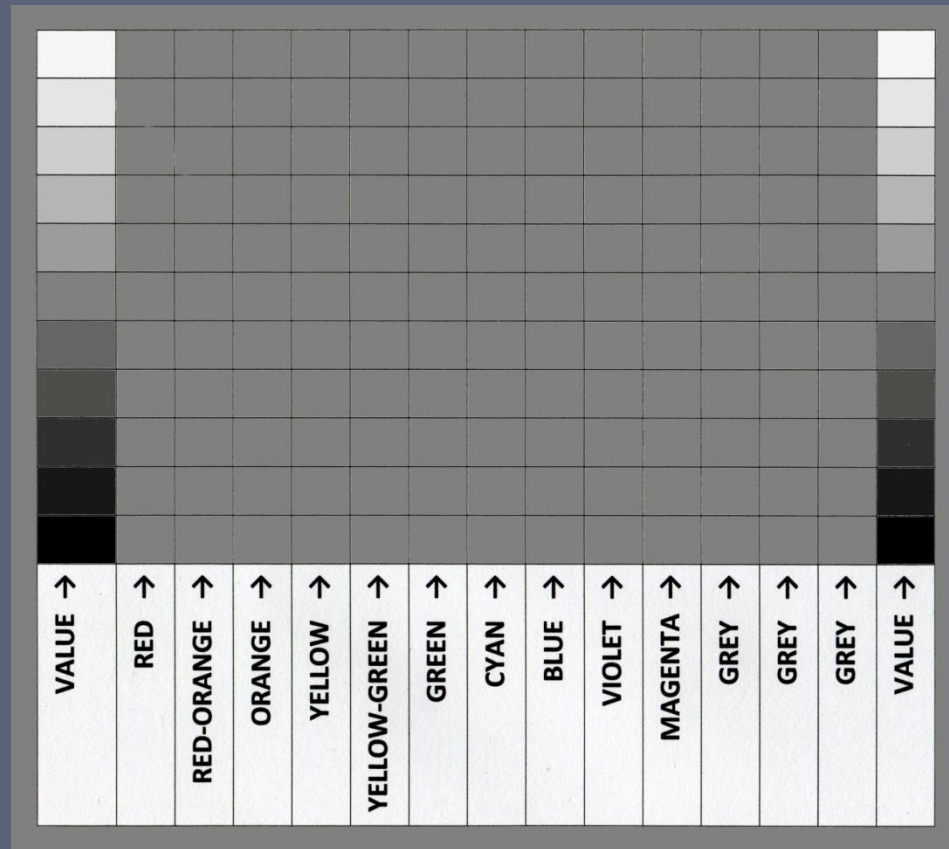
*Marie Antoinette.*  
Sofia Coppola,  
2006





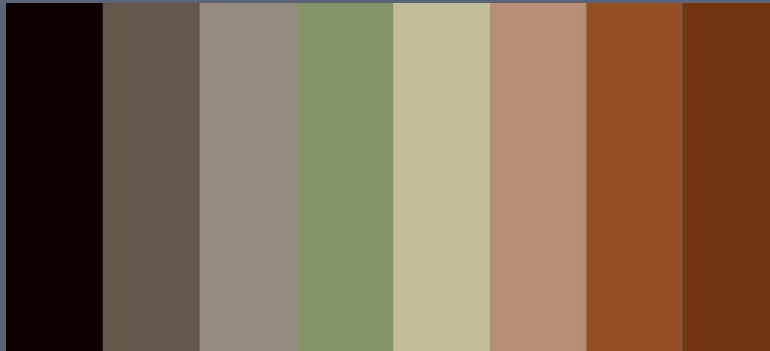
*Marie Antoinette. 2006*

- The colours of an image should be analyzed as the *perceived optical signal* – if the dominating colour property seems grey the colour should be included in the column of grey modulations.
- The basic tone of the colour grid is 50% neutral grey to estimate colour properties in relatively objective way.

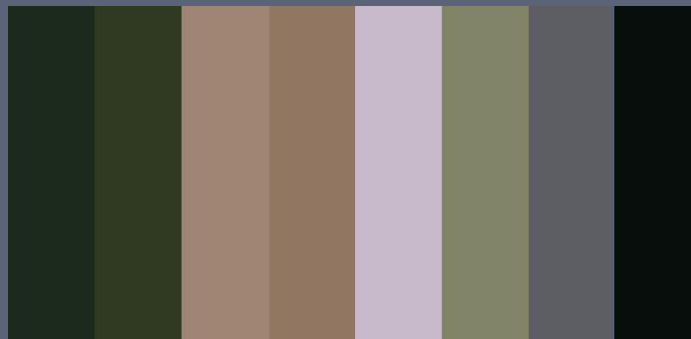








Antonioni.  
*Red Desert*, 1964



Luchino Visconti.  
*L'Innocente*, 1976

# CONCLUSIONS

5. The **CONCLUSION** is a summary of a research containing:
- The evaluation of the methods applied during the research,
  - The conformity of the research to the initial concept,
  - The formulated conclusions.



*Who Framed Roger Rabbit. 1988*

# RESOURCES

6. The **BIBLIOGRAPHY** section contains an information on the textual and other resources used in the course paper: the name of author, the name of the book, the publisher's name, the year of publishing:

## Main bibliographic resources

1. Arnheim, R. *The Power of the Center*. University of California Press, 1988
2. Gombrich, E.H. *Art and Illusion*. Phaidon Press Ltd., 2002

## Internet resources

1. <http://www.artcyclopedia.org>
2. <http://www.wga.hu>

## TECHNICAL INFORMATION

- The size of the text font is 12 points, and 14 points for the titles,
- Suggested fonts are *Times New Roman* or *Calibri*.
- Interval between the lines is at 1,5.
- Indent from the left is 30mm, 25mm from the right, 20mm from the top, 25mm from the bottom.
- The pages of the course paper should be numbered.
- The course paper should be printed, signed and its pages fastened together.



## SUBMISSION AND PRESENTATION

- It is suggested to send the electronic draft of the course paper one week before the examination day to the following address :

[atis.kampars@riseba.lv](mailto:atis.kampars@riseba.lv)

- On the examination day the course paper should be:
  1. Submitted in the printed form.
  2. Performed as a presentation.

# PRESENTATION

The presentation (a summary or essence of a course paper) consists of:

- The title slide with the name of course paper, name/surname of the student, the name of the study programme.
- The explanation about the motivation and aim of the research,
- The activities performed during the research,
- The images as a material complementing the research.
- The conclusion.

# PRESENTATION

- It is suggested to make the presentation in *MS PowerPoint* programme.
- The approximate number of slides is 5 to 10.
- The approximate length of the presentation is about 15 minutes.
- The suggested fonts are *Calibri* of 20 point size. The size of fonts for the titles is 24 or 28 points.
- The text and images of presentation should be located in proportional distances from the outer borders of the format.