

The Moscow Railway Transport Institute

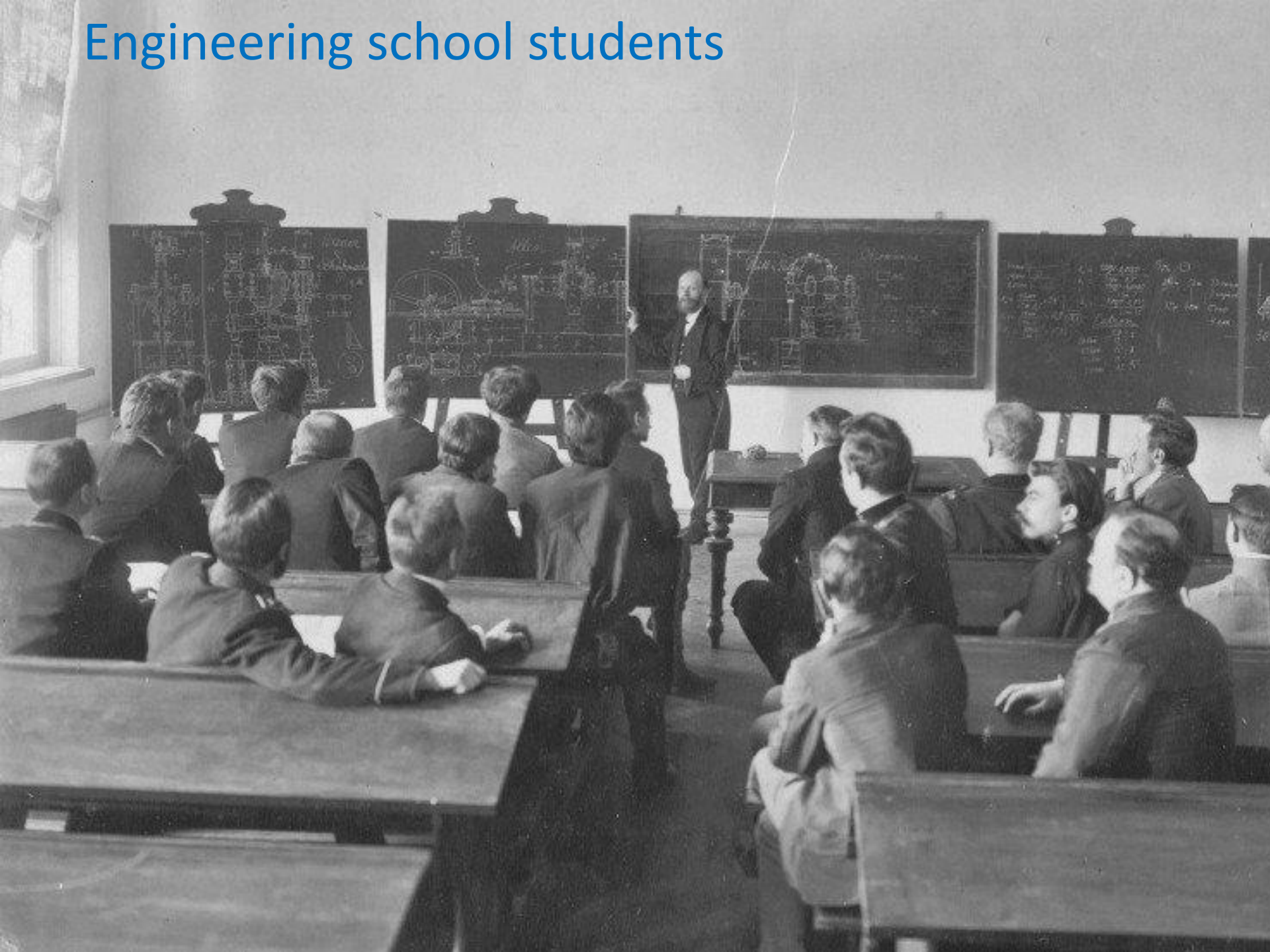


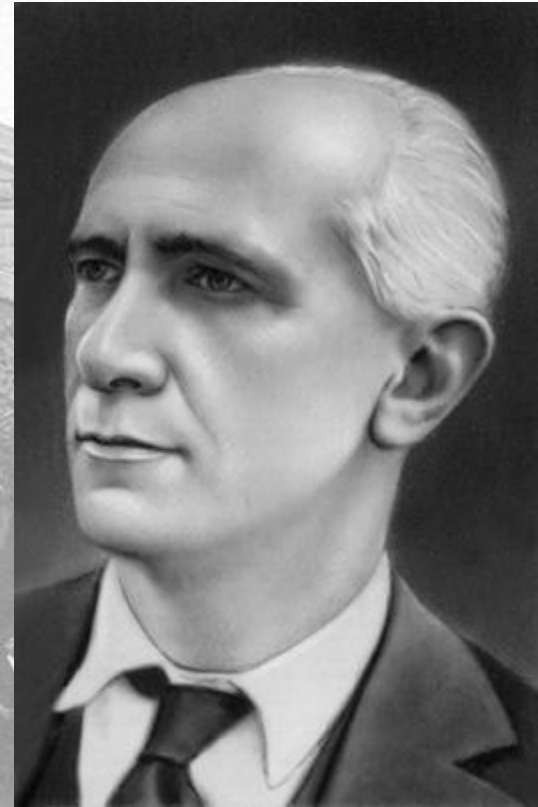
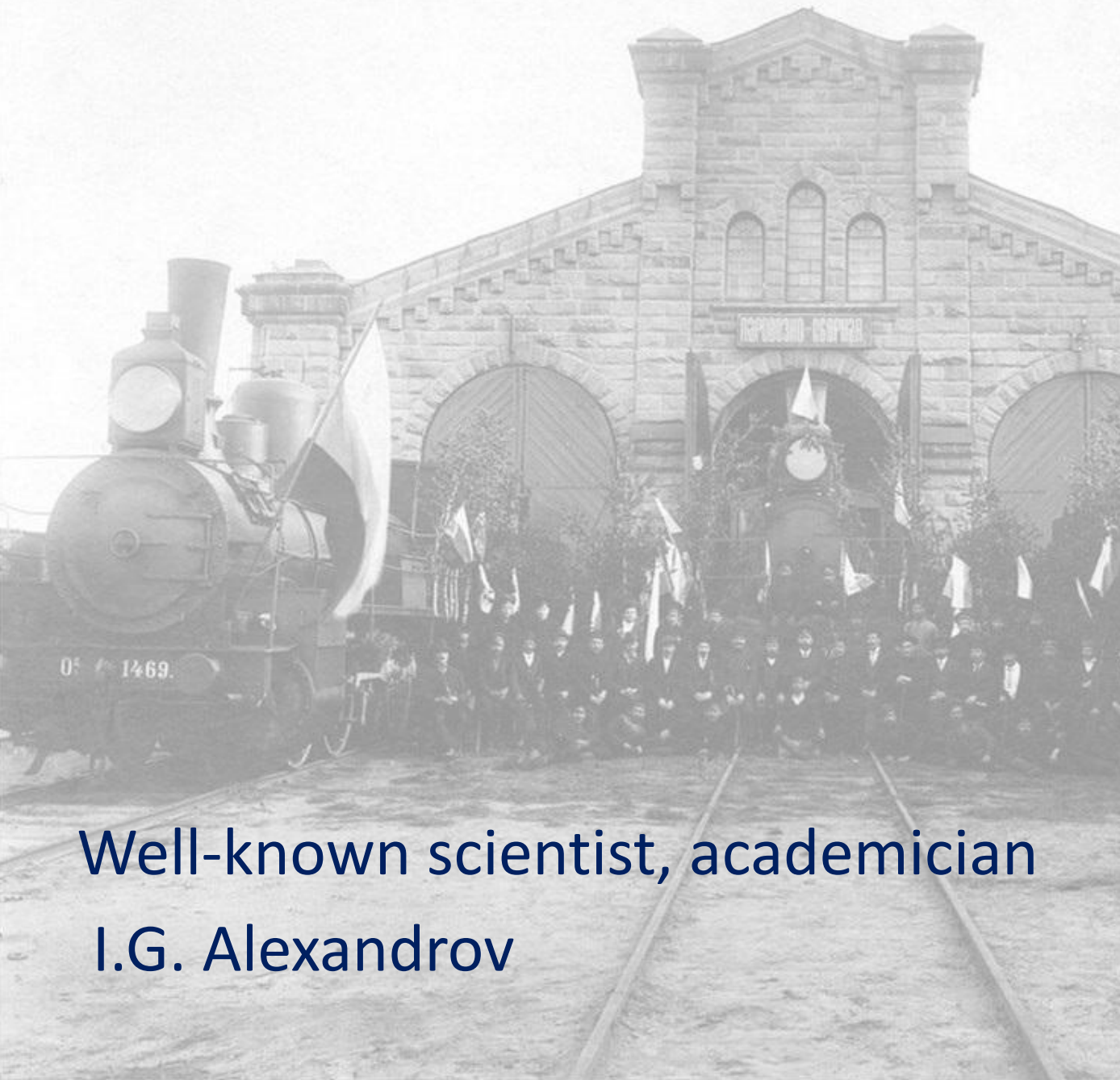
The ground floor of that building was occupied by Eliseev's food store so well-known in Moscow



Наружный видъ магазина.

Engineering school students

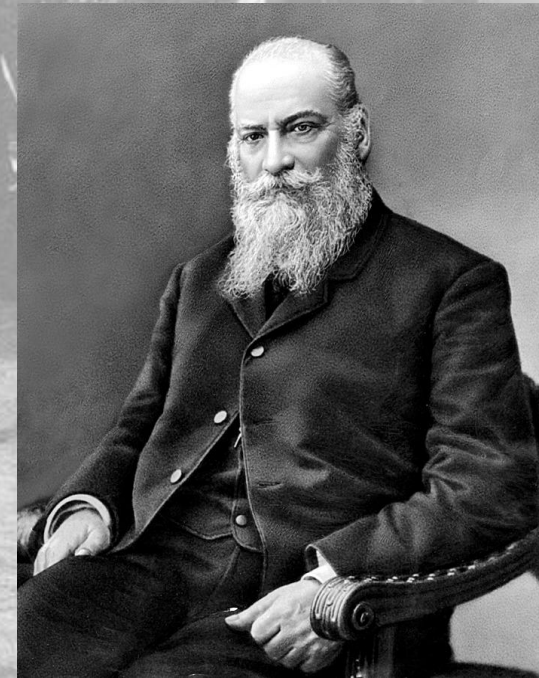




Well-known scientist, academician
I.G. Alexandrov

Well-known scientists, academicians

V.N. Obrastsov, E.O. Paton and N.E. Zhukovsky



Under the Soviet power the
Moscow Railway Transport Institute
Has become one of the largest higher educational
Institutions in our country



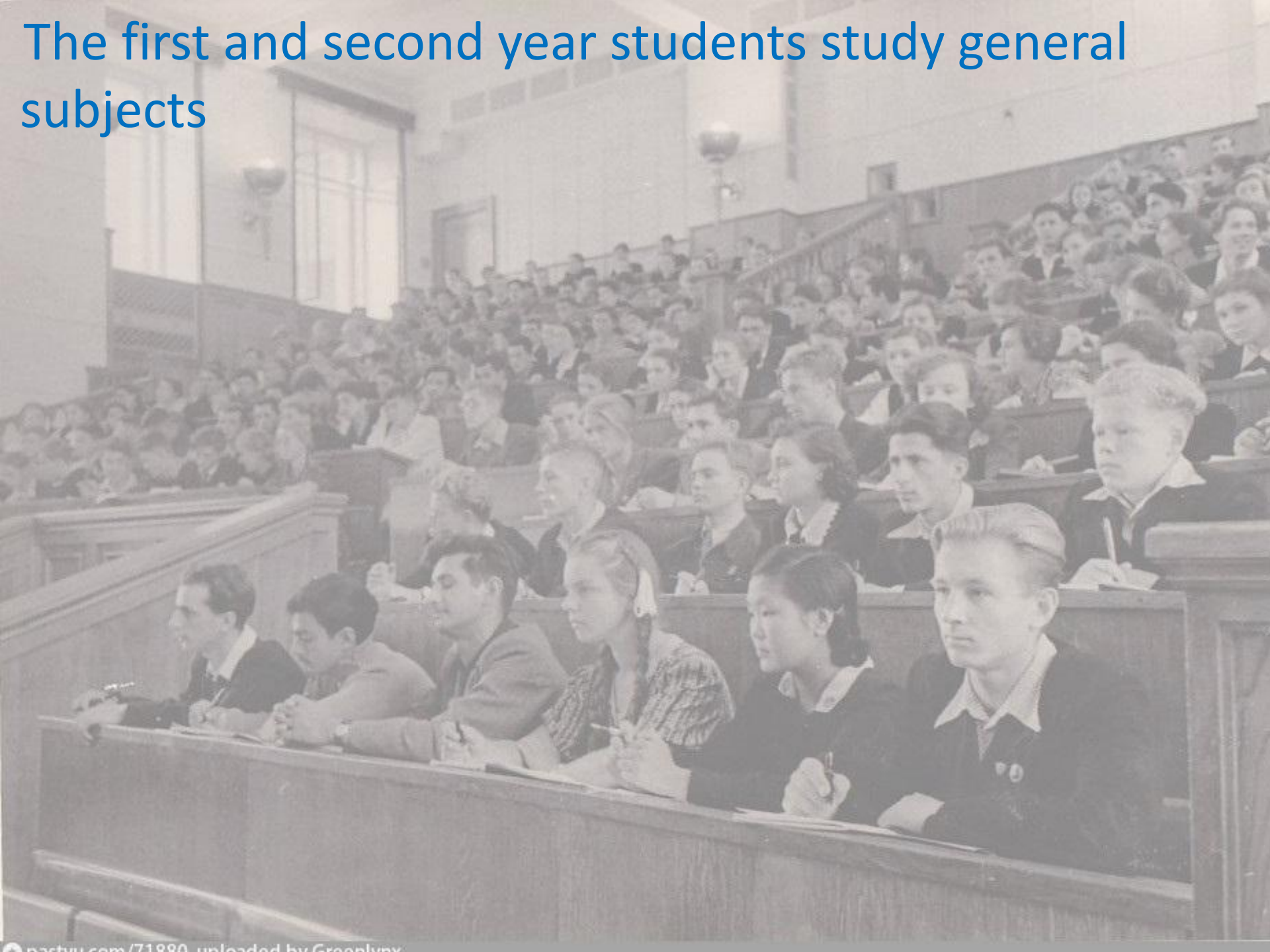
About 15000 students study at the Institute.

The institute has twelve faculties:

- The Railway Construction Faculty
- The Bridges and tunnels Faculty
- The Civil Engineering Faculty
- The Railway Economics Faculty
- The Railway Electrifications Faculty
- The Mechanical Faculty
- The Mechanical and Technological Faculty
- The Automation and Telecommunication Faculty
- The Engineering Cybernetics Faculty

And two Evening Faculties.

The first and second year students study general subjects





Thanks for attention