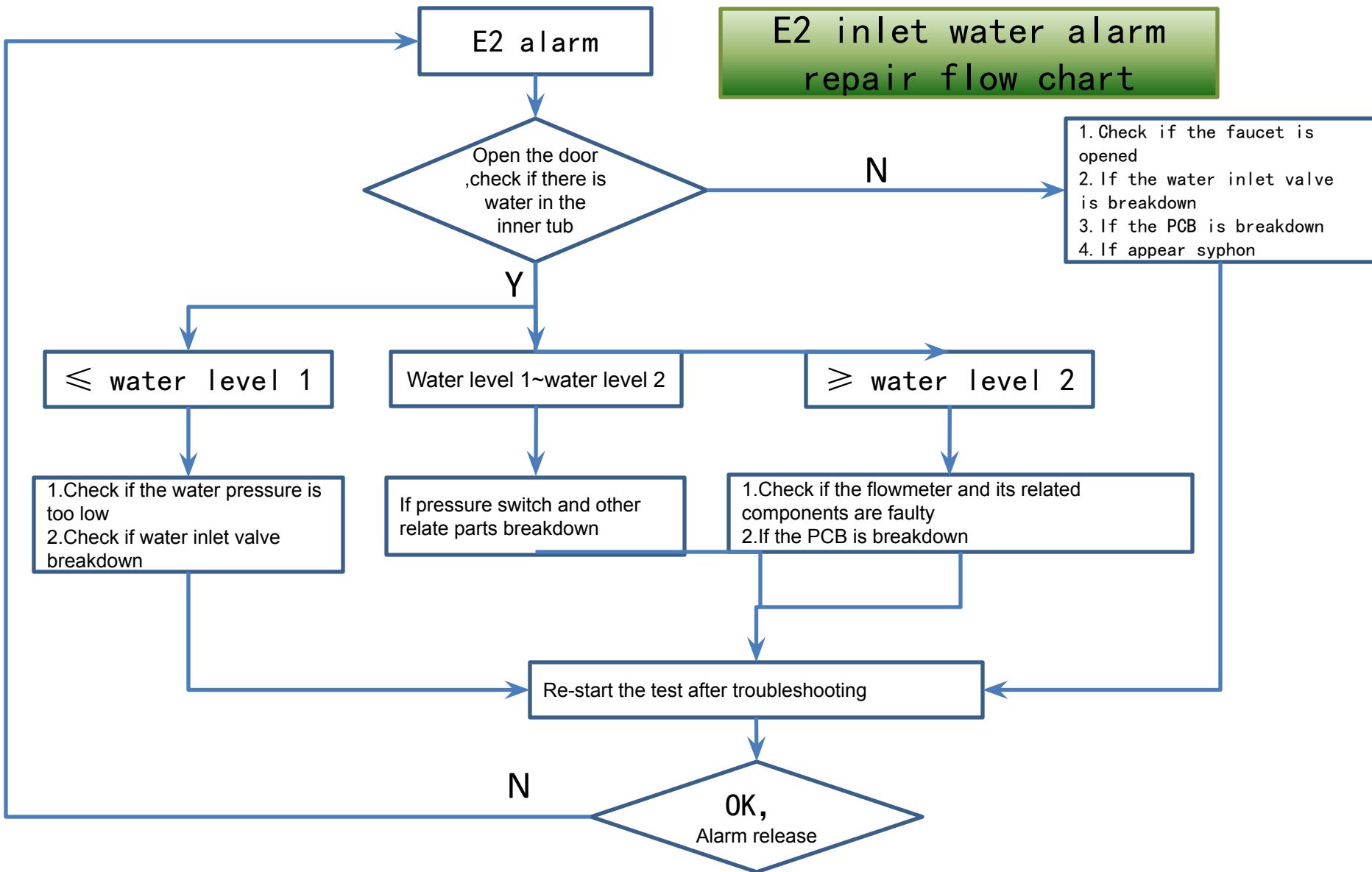


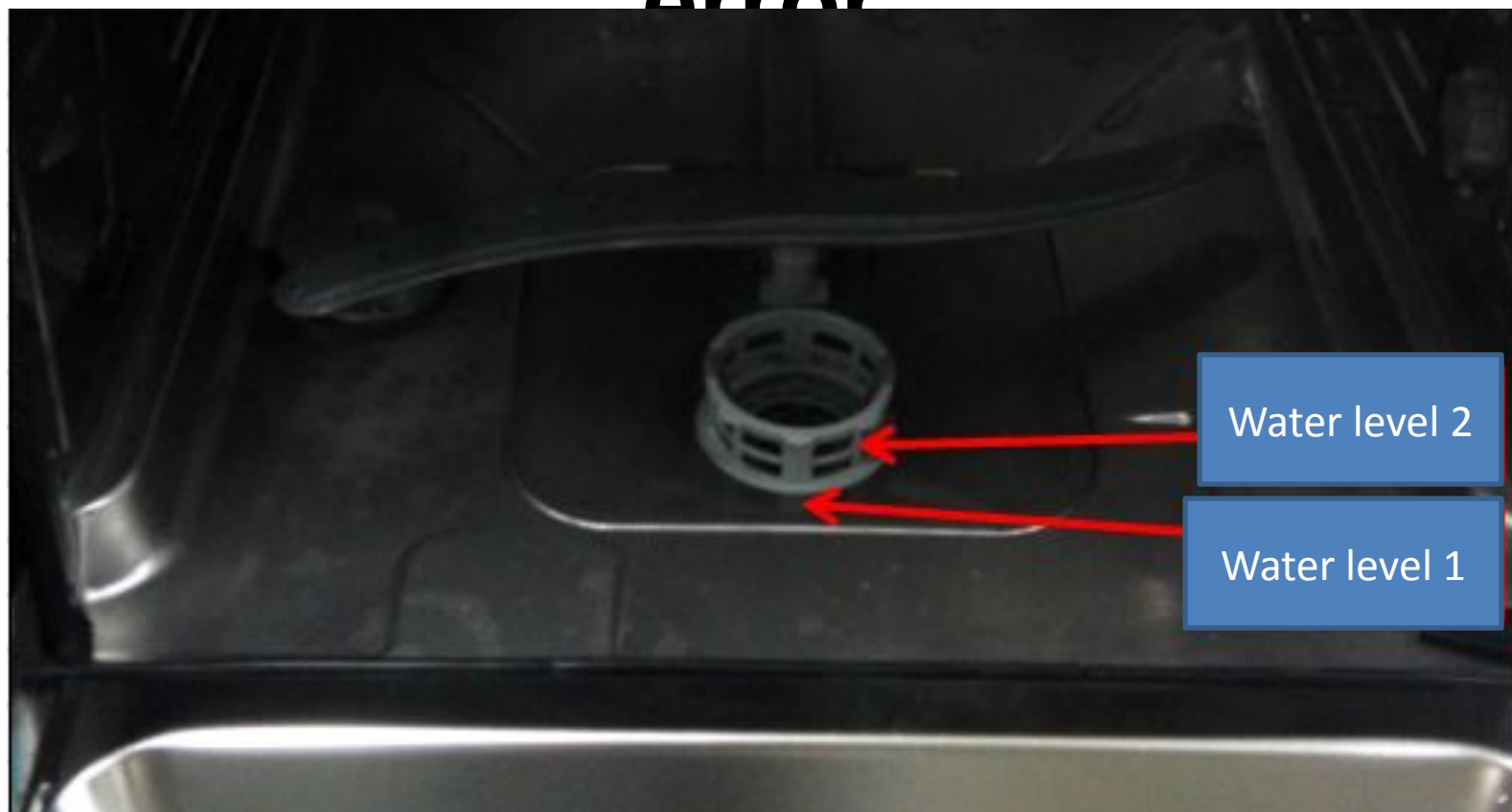
Dishwasher E2 water inlet error repair guidelines

**Dishwasher electric
control group
2016.12.26**

E2 inlet water alarm repair flow chart



The water level when appear E2 error



Condition 1 : no water in the inner tub when alarm

If there is no water in the inner tub when E2 water failure occurs, according to the following steps to detect:

1. Check whether the water valve connected to the dishwasher is open, if the water valve is not open, open the water valve and restart.
2. If the water valve is open and the water pressure is normal, please check if the water inlet valve is faulty or blocked. If the water inlet valve is faulty or blocked, please clean or replace the water inlet valve and restart it.
3. Check the PCB and harness , if water valve circuit is faulty, restart after troubleshooting.
4. If the above steps are normal, please check if the drainage pipe hang in required height, drain pipe is immersed in the water (causing siphon): due to the drainage pipe is not high enough to hang or draining pipe mouth is immersed in the water, leading to siphon, The water in the inner tub is drained through the draining pipe, resulting in E2 alarm. Please follow the instructions to hang the draining pipe and ensure that the drain is not immersed in the water and restart.

Condition 2: water level in inner tub \leq water level 1

If E2 water level is 1 or lower than water level 1 (liquid level is below or below filter), please check the following steps:

1. First check if the water pressure is normal, whether the water pressure is too low, after the water pressure is normal ,restart.
2. If the faucet is open and the water pressure is normal, please check whether the inlet valve is blocked. If the inlet valve is blocked, please clean or replace the inlet valve and restart.

condition3: inner tub water level between level 1 to level 2

If the inner tub water level between water level 1 to water level 2, according to the following steps to detect:

1. First check if the pressure switch 1, 3 is closed (need to detect the pressure switch 1 and 3 terminals and computer board CN4 3,4pin), if the pressure switch 1, 3 is not closed, please check in order:

A, after removed the pressure switch, test if the action point / reset point is normal. B, pressure switch, whether leakage air and inlet water.

C, gas chamber cover, whether the poor welding or bulk front air port.

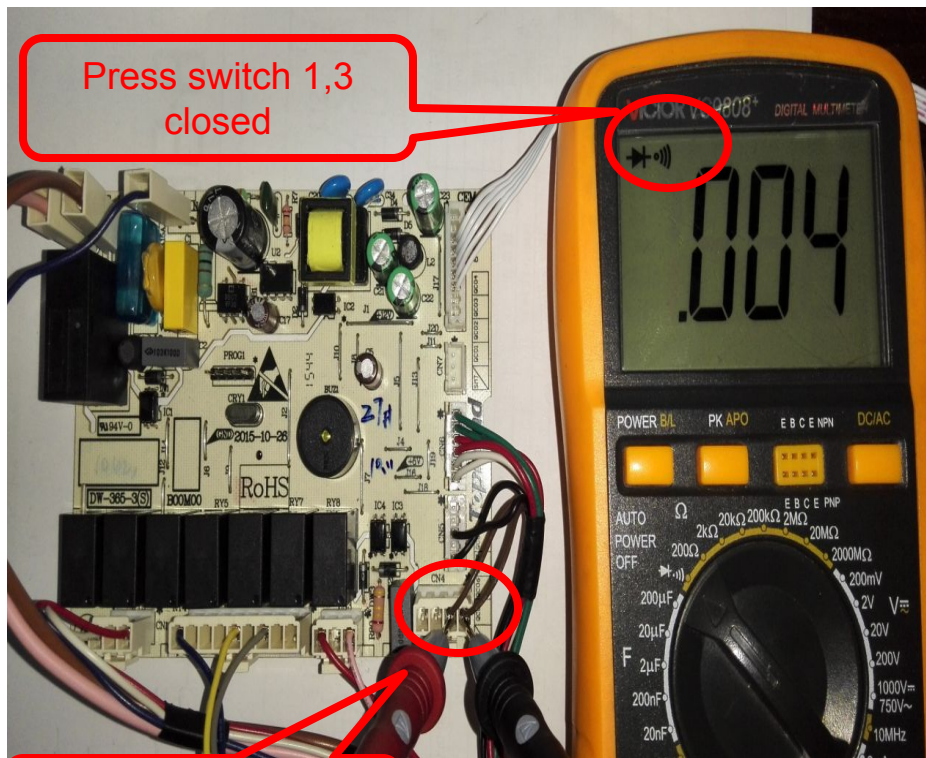
If E2 failure caused by the above device failure, please replace the corresponding device.

2. If the pressure switches 1 and 3 are normally closed during the E2 alarm (measured at 3 and 4 pins on the CN4 terminal of the PCB), replace the PCB and restart it.

Pressure switch 1、3 point on-off test icon

In the PCB position ,check pressure switch 1,3 point on-off signal

pressure switch 1,3 point on-off test



Condition 4:inner tub water level \geq water level 2

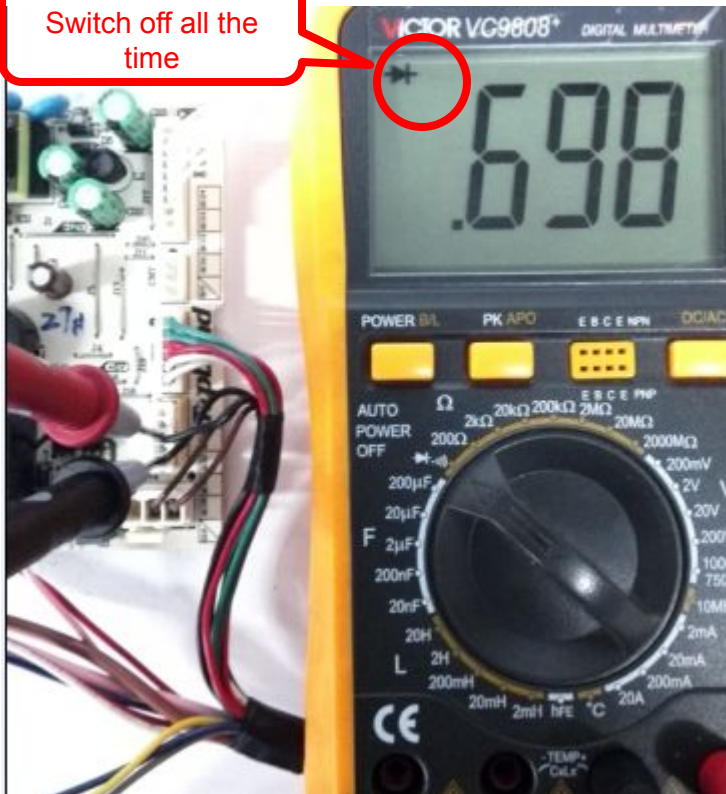
If the water level \geq water level 2, according to the following steps to detect:

- 1.Check if the PCB flowmeter terminal loose, if plugged normally.
2. Check if the flowmeter breakdown, detection method: the multimeter transferred to the diode file, the pen were connected to the PCB CN5 1,3 pin, restart the dishwasher, when the dishwasher inlet water, detected whether the flow meter on-off signal,(When the water signal is normal, it is a continuous sound of drops and drops. When the signal is abnormal, it is always disconnected or closed) If the flowmeter signal is abnormal (always on or off), please replace the flowmeter (or respirator) and then restart it .
3. . If the above steps are normal, please change the PCB, and restart.

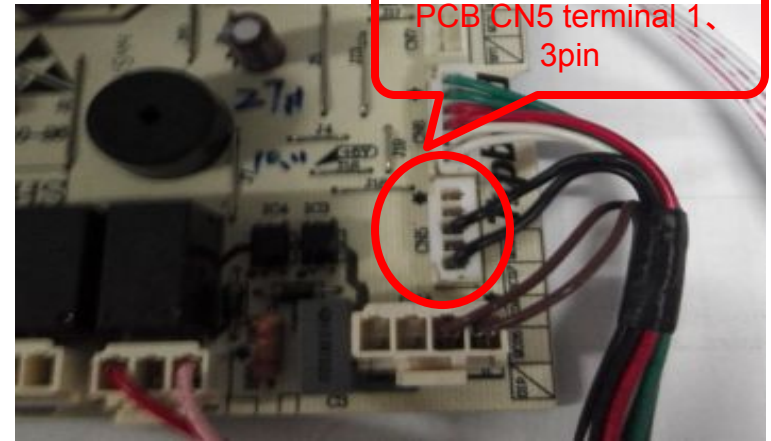
Flowmeter on-off signal test icon

The flowmeter on the PCB position on-off signal

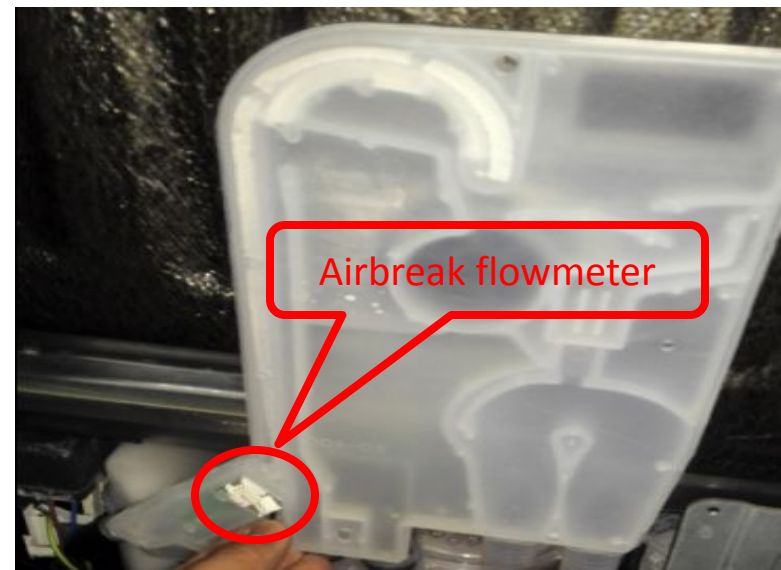
Flowmeter
Switch off all the
time



PCB CN5 terminal 1,
3pin



Airbreak flowmeter



~THE END~

Thank you !

