

KEMPINSKI HOTEL AQABA RED SEA- JORDAN

OPENING 2008

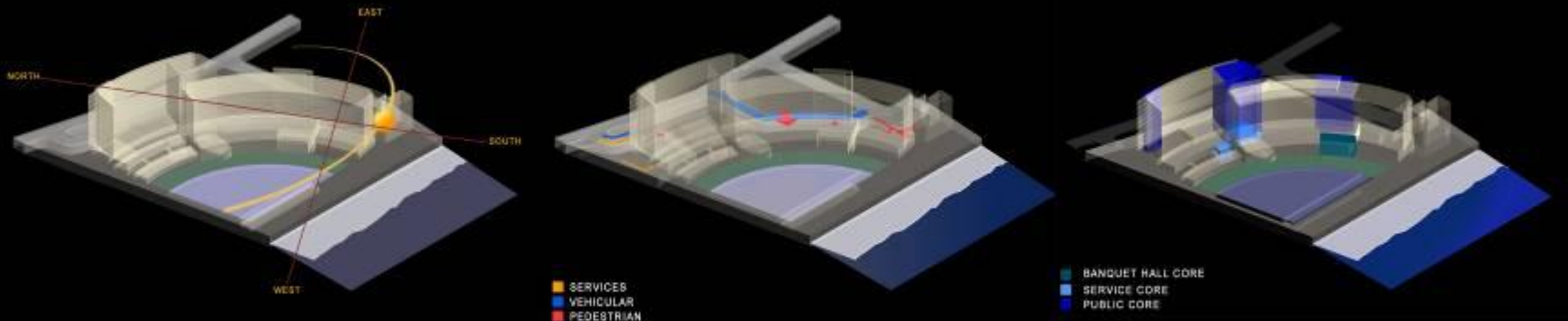


CONCEPT

ANALYSIS

:THE FORM OF THE EDIFICE WAS CONCEIVED AS A RESULT OF LAND CONSTRAINTS; SHAPE AND ORIENTATION OF THE PLOT IN RELATION TO THE SEA. THE SEMI CIRCULAR FORM OPTIMIZES LAND USAGE WHILE ENSURING AREAS OF EXTENSIVE LANDSCAPE

SUN MOVEMENT AND GUEST ROOM ORIENTATION; ENSURING THAT EVERY ROOM HAS OPEN VIEWS TO THE SEA

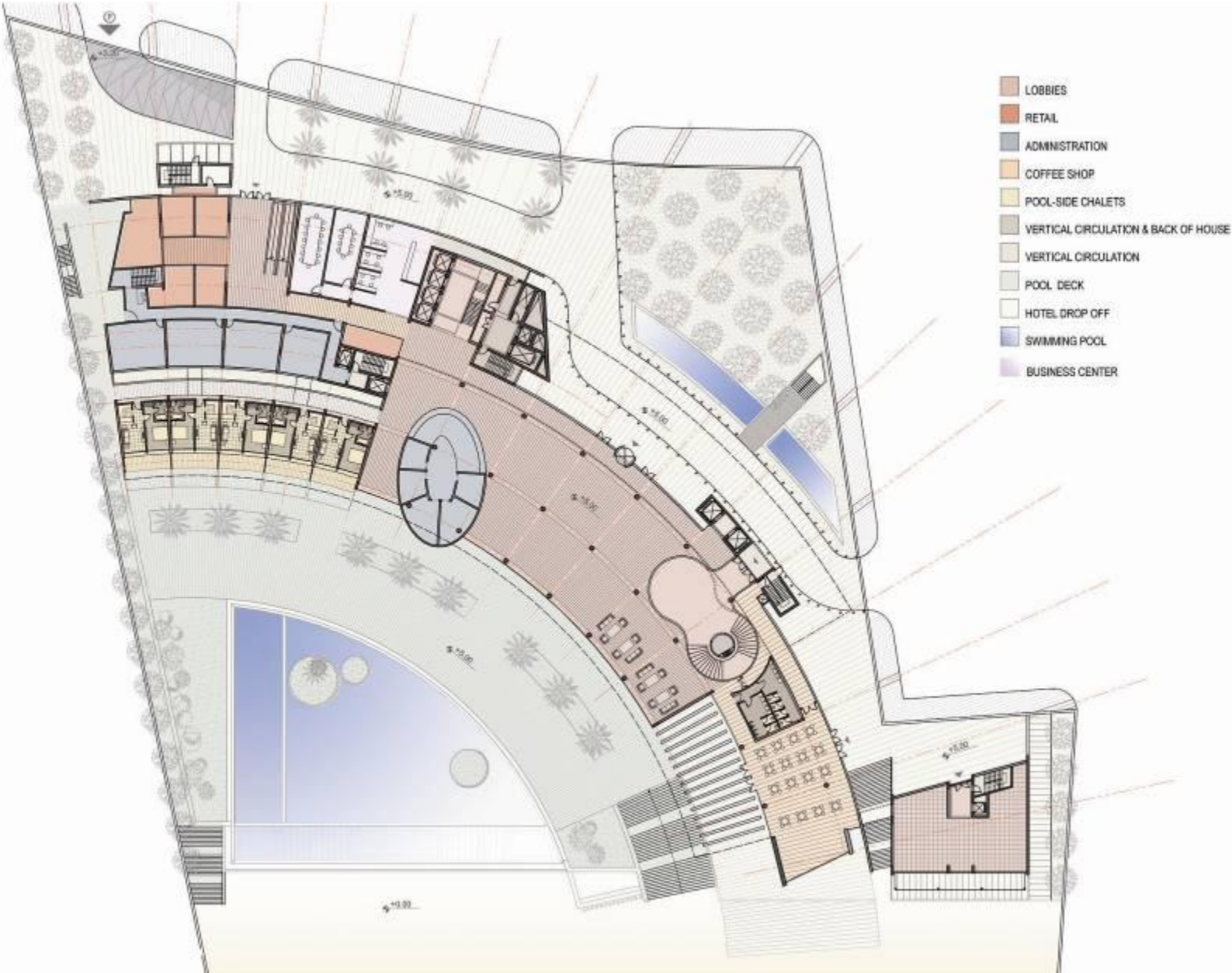


SUN
MOVEMENT

HORIZONTAL
CIRCULATION

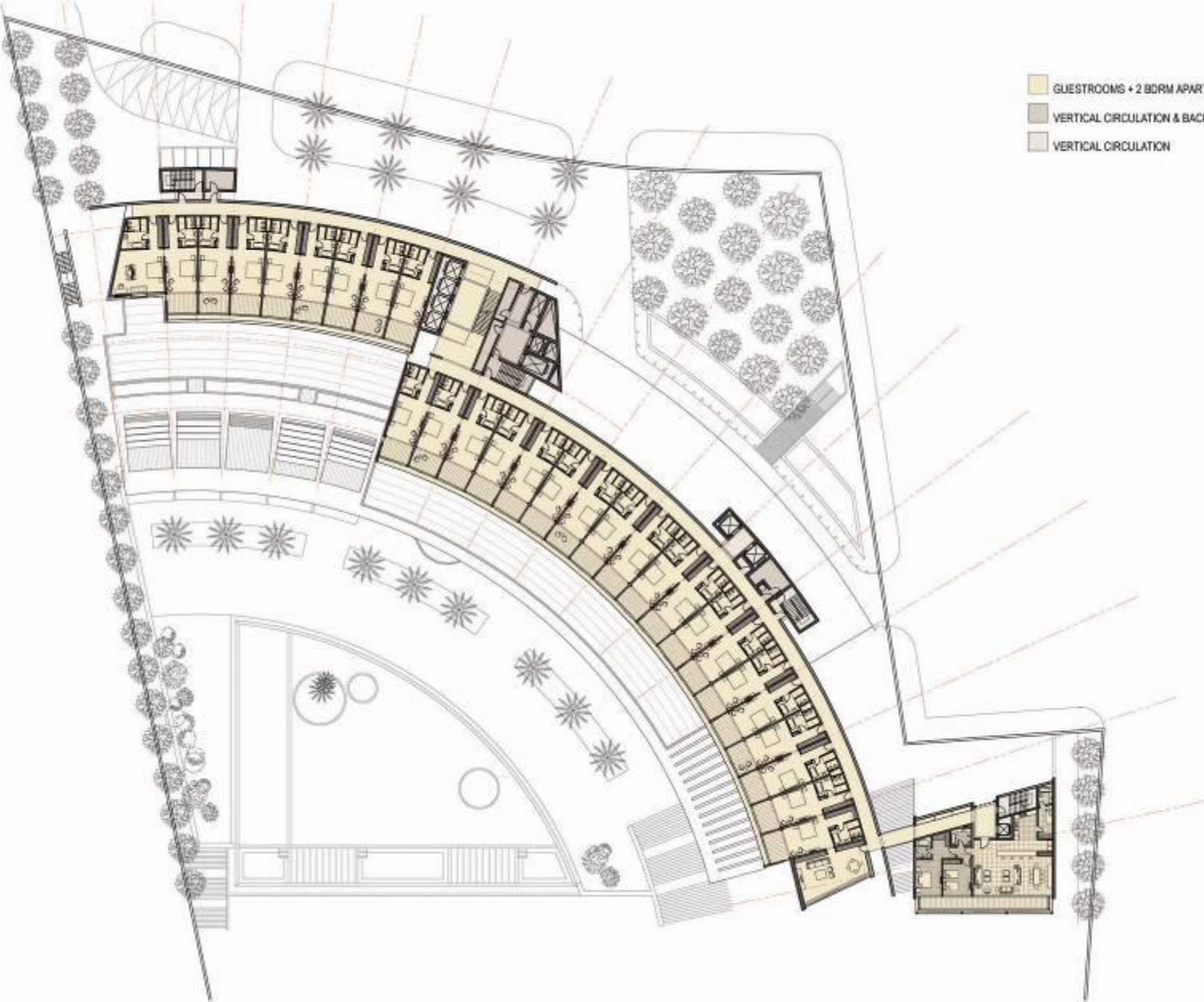
VERTICAL
CIRCULATION

GROUND FLOOR PLAN



TYPICAL FLOOR PLAN

- GUESTROOMS + 2 BDRM APARTMENTS
- VERTICAL CIRCULATION & BACK OF HOUSE
- VERTICAL CIRCULATION



CITY FRONT

NIGHT VIEW

THE FRONT FAÇADE IS CLAD WITH DESERT GOLD STONE PUNCTUATED WITH RYTHMIC OPENINGS ALLOWING FOR FRAMED VIEWS OF THE MOUNTAINS BEYOND



CITY FRONT

DAY VIEW



BEACH FRONT VIEW

DAY TIME PERSPECTIVE



MATERIALS & ATMOSPHERE

THE MATERIALS USED FOR THE PROJECT WERE CAREFULLY CHOSEN TO BLEND HARMONIOUSLY WITH THE SURROUNDING LANDSCAPE



GROUND FLOOR

LOBBY & LOUNGE NIGHT VIEW



GROUND FLOOR

LOBBY & LOUNGE NIGHT VIEW



MEZZANINE FLOOR

ALL DAY DINING RESTAURANT VIEW



BASEMENT FLOOR

BALLROOM VIEW



BASEMENT FLOOR

FISH RESTAURANT VIEW



BASEMENT FLOOR

FISH RESTAURANT TERRACE VIEW



MEZZANINE FLOOR

SPA & GYM VIEW



MEZZANINE FLOOR
SPA & GYM VIEW



TYPICAL FLOOR
CORRIDOR VIEW



TYPICAL FLOOR

STANDARD GUESTROOM VIEW



TYPICAL FLOOR

STANDARD GUESTROOM BATHROOM VIEW



TYPICAL FLOOR

STANDARD GUESTROOM BATHROOM VIEW

