

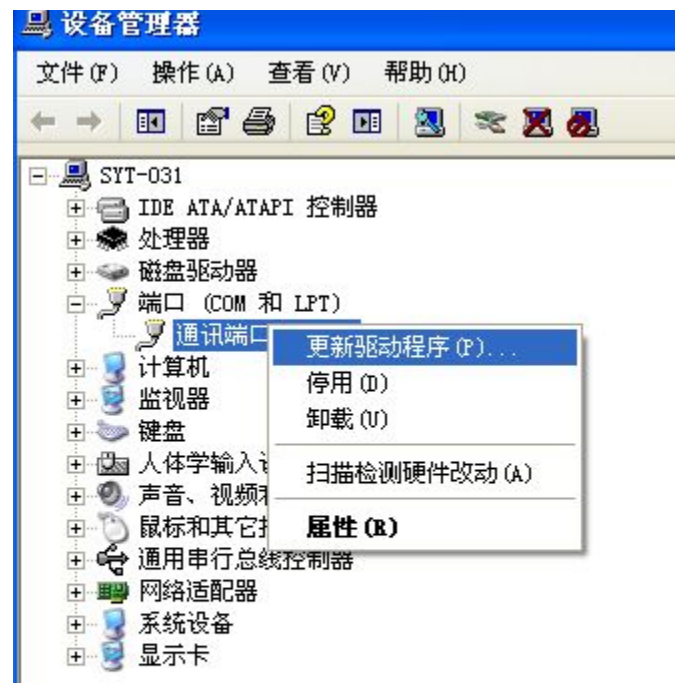
工具解压



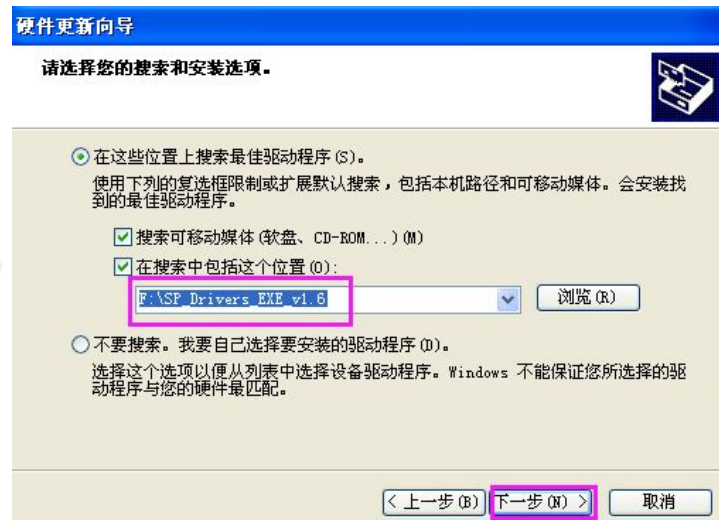
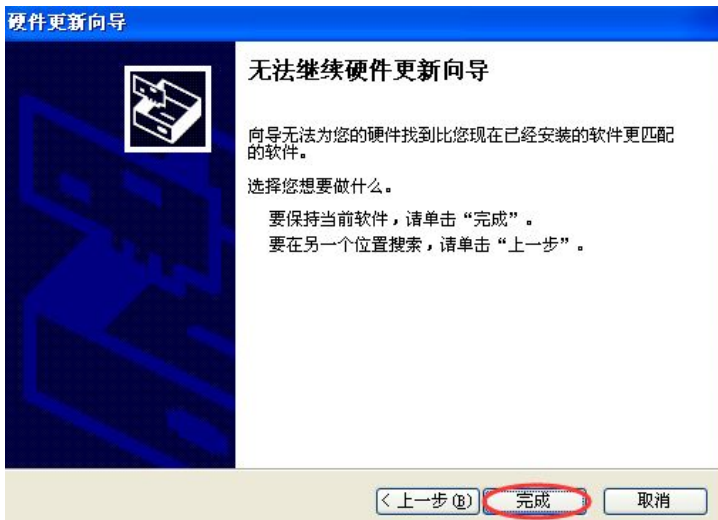
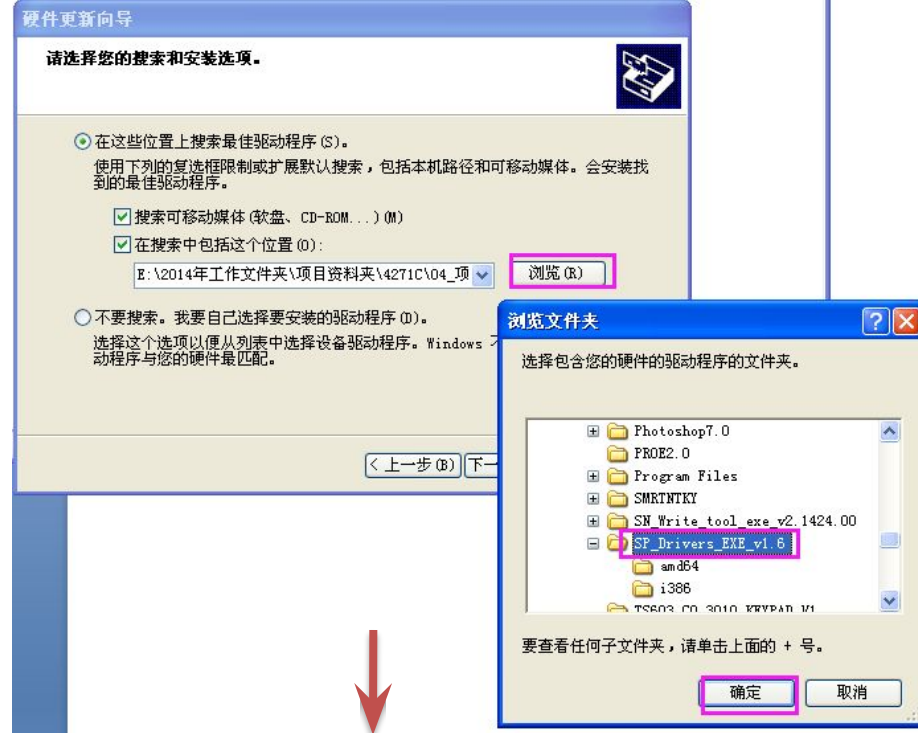
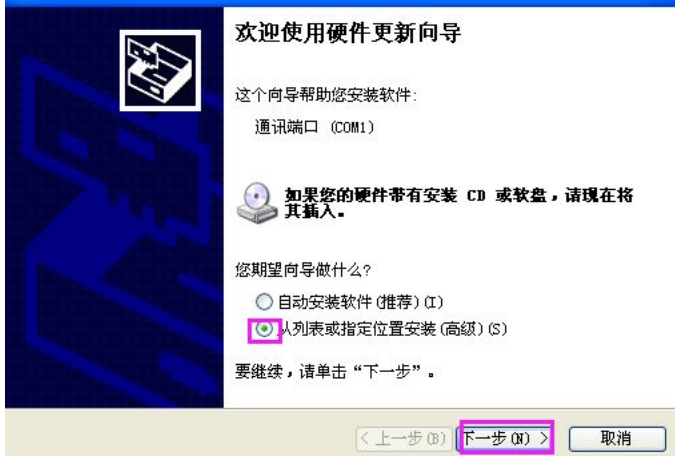
安装USB驱动



右击“我的电脑”选择“设备管理器”



连接USB线后，右击未知端口更新驱动程序



更新驱动文件请选择解压的
“SP_Drivers_EXE_v1.6”文件

写WIFI MAC地址



SN_Write...



SF_Drive...



Documents



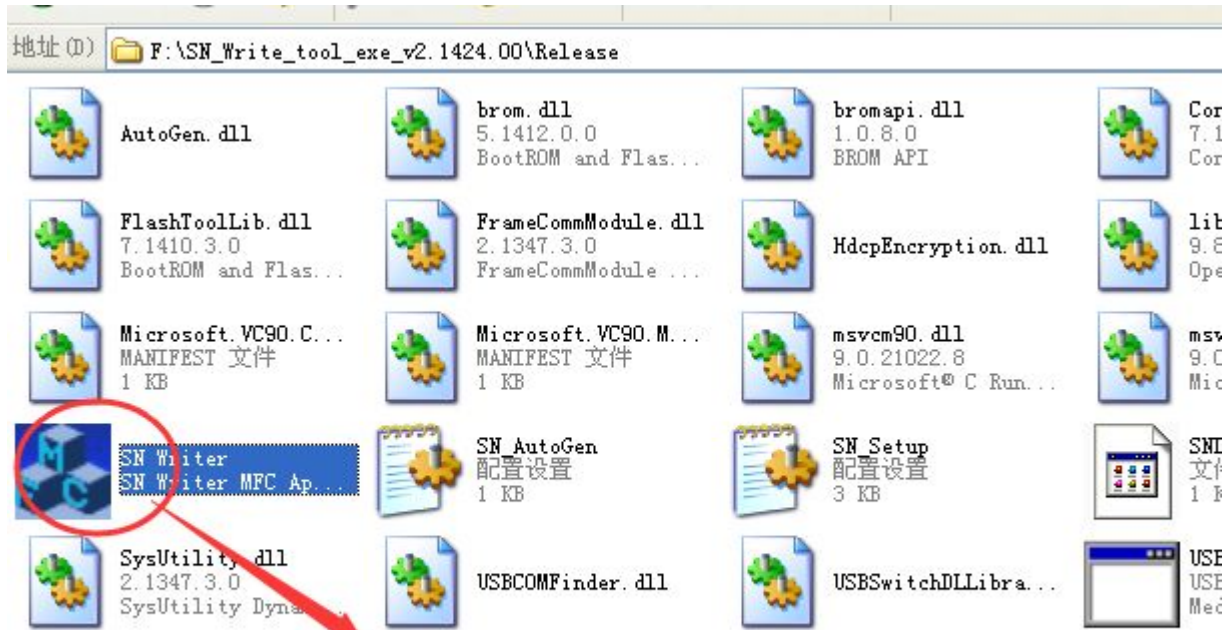
Release

打开工具

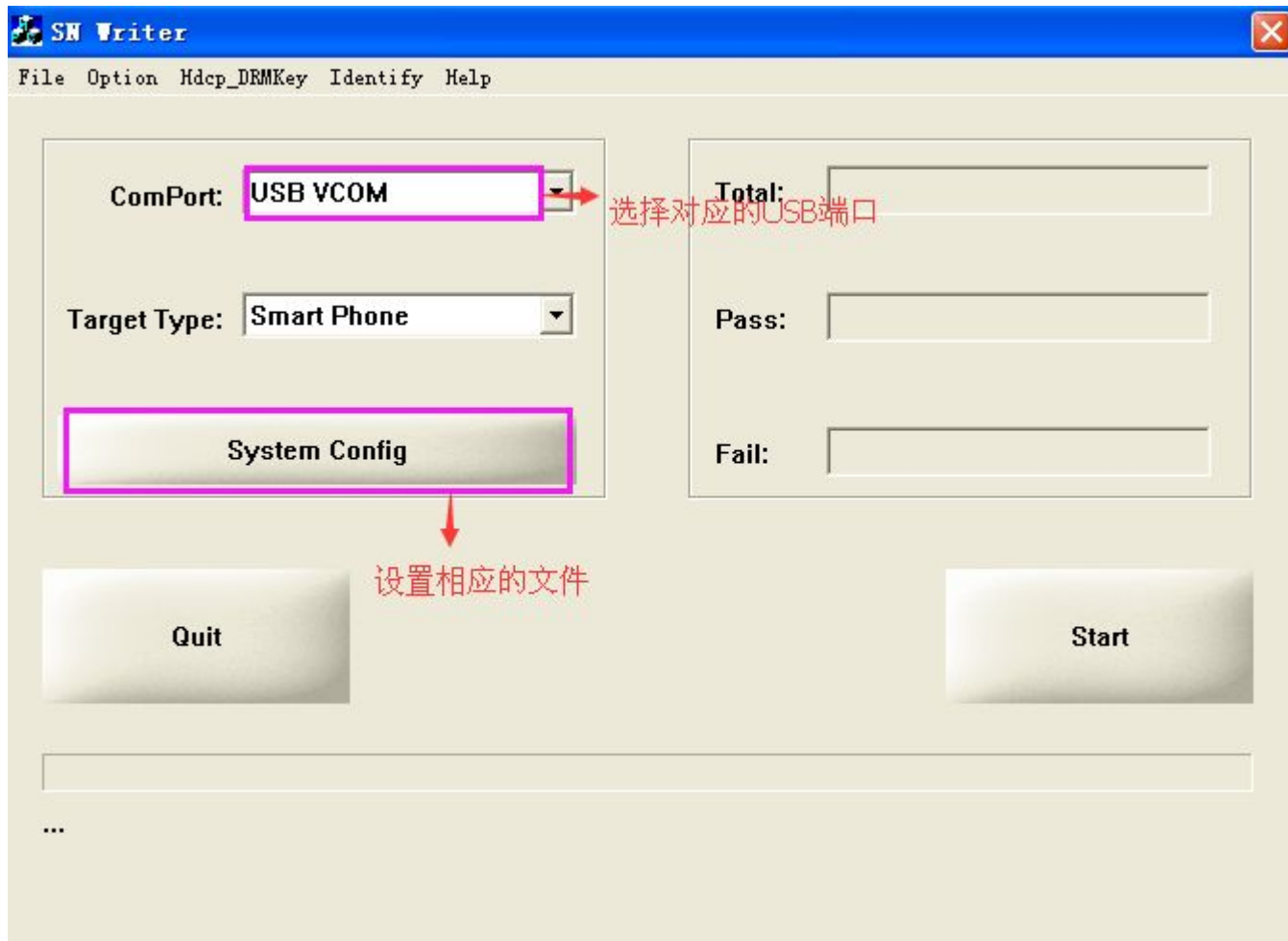


使用说明

写WIFI地址工具



双击打开写号工具



System Config

Write Option

- Barcode
- IMEI
- BT Address
- Wifi Address 选择写WIFI地址
- Wifi EPPCopy
- Ethernet Mac Address
- DRMkey MCID

Header Option

- Barc Header: 1234 On/Off
- BT Header: On/Off
- Wifi Header: On/Off
- IMEI_1 Header: On/Off
- IMEI_2 Header: On/Off
- IMEI_3 Header: On/Off
- IMEI_4 Header: On/Off
- Ethernet Hder: 123 On/Off
- MCID Header: 123 On/Off

IMEI Option

- IMEI CheckSum
- IMEI Lock
- Dual IMEI
 - DualIMEI Same
- Three IMEI
- Four IMEI
- CurTemperature
- 20.3 °C

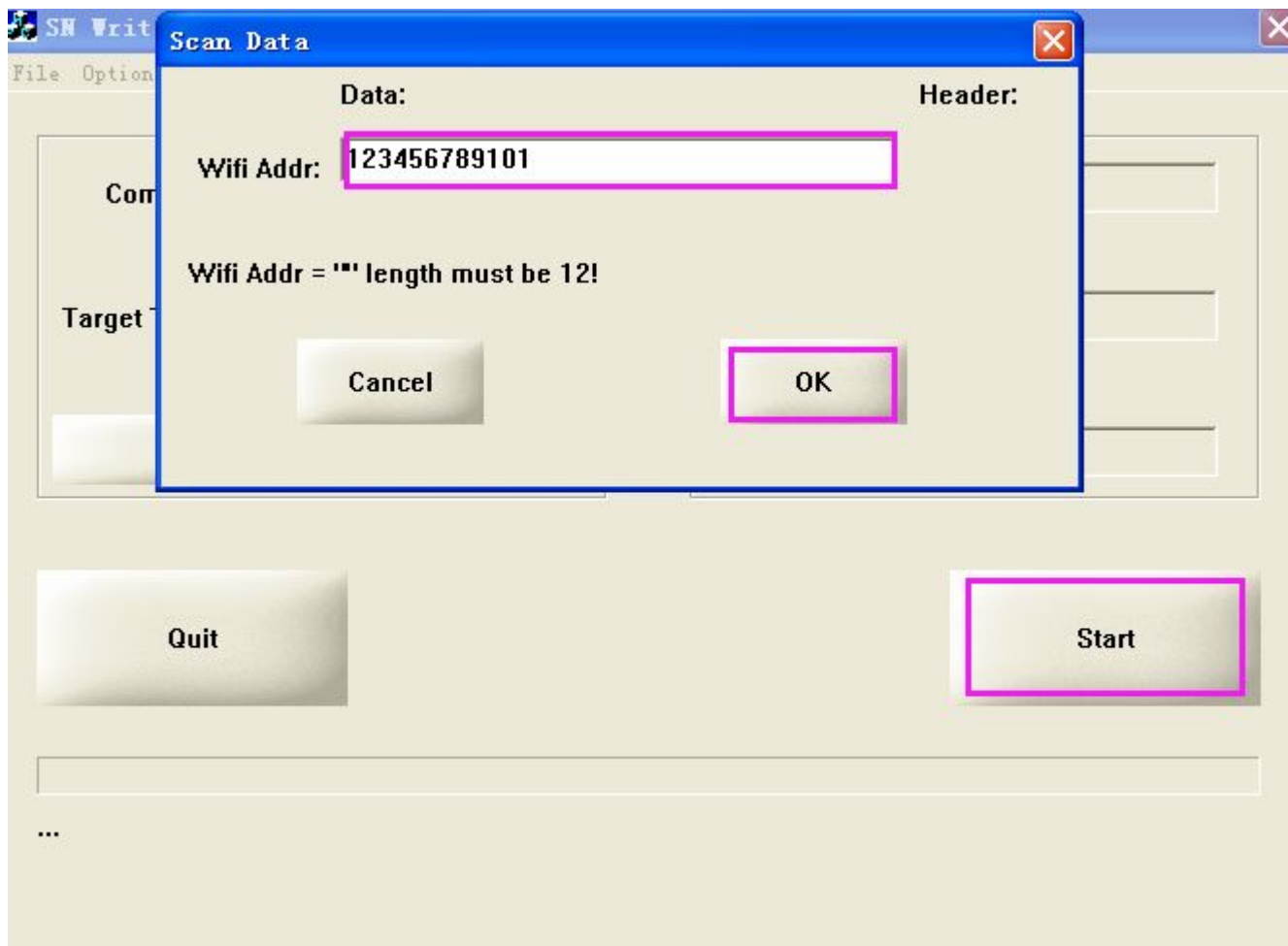
DataBase File 选择本手机对应的软件的BPLG文件

- tch开机动画\BPLG\InfoCustomAppSrcP_MT2501_S00_M59C_MG_FN3_V003 MD1_DB
- D:\Bin\mt6589_phone_k89v2\BPLG\InfoCustomApp_MT6589_S00_WR8_W13 MD2_DB
- D:\Bin\mt8127_tablet_pixo7_ALPS.KK1.MP10.p10_eng\APDB MT8127_S01_K AP_DB

选择本手机对应的软件APDB文件

Save

设置完成后点保存



选择“Start”按钮后，输入WIFI地址码，点击OK

然后将“关机”状态下的手机(带电池)连接USB线进行写码