

dragy



vs



P-GEAR



HOW IT WORKS

dragy

Testing your vehicle's performance and analyzing from your smartphone has never been that easy.



- > 10Hz GPS+ GLONASS Module
- > Bluetooth 4.0 Module
- > Build-in Battery
- > Strong Magnet

2sec

GPS connection with A-GPS

0.01sec

Performance definition

10hr

Battery life

P-GEAR

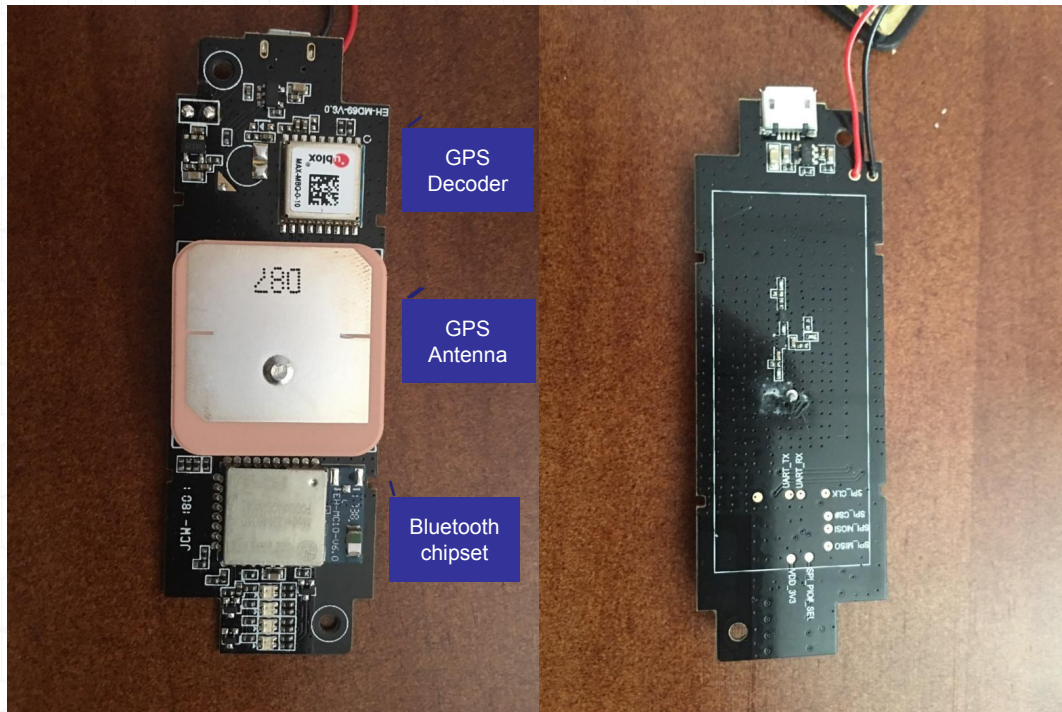
Product specifications

Product name	P-GEAR	Model	P-610
Size	66x66x16(mm)	Input voltage	DC 5.0v
Receiving method	Bluetooth 4.0	Max Power	200MW
Chip	ublox-8030	Life time	6hours
Frequency	20hz Multi-Star(GPS+GLONASS)	Electric Current	50mA
3D acceleration sensor	MPU-6050	Charging time	1.5hours
Requirement	Smartphorse with IOS8.0 later or Android 5.0 later		



- 1 GPS light
- 2 Bluetooth light
- 3 Charging light
- 4 Switch
- 5 USBcharging port
- 6 GPS chip location

Hardware Comparion

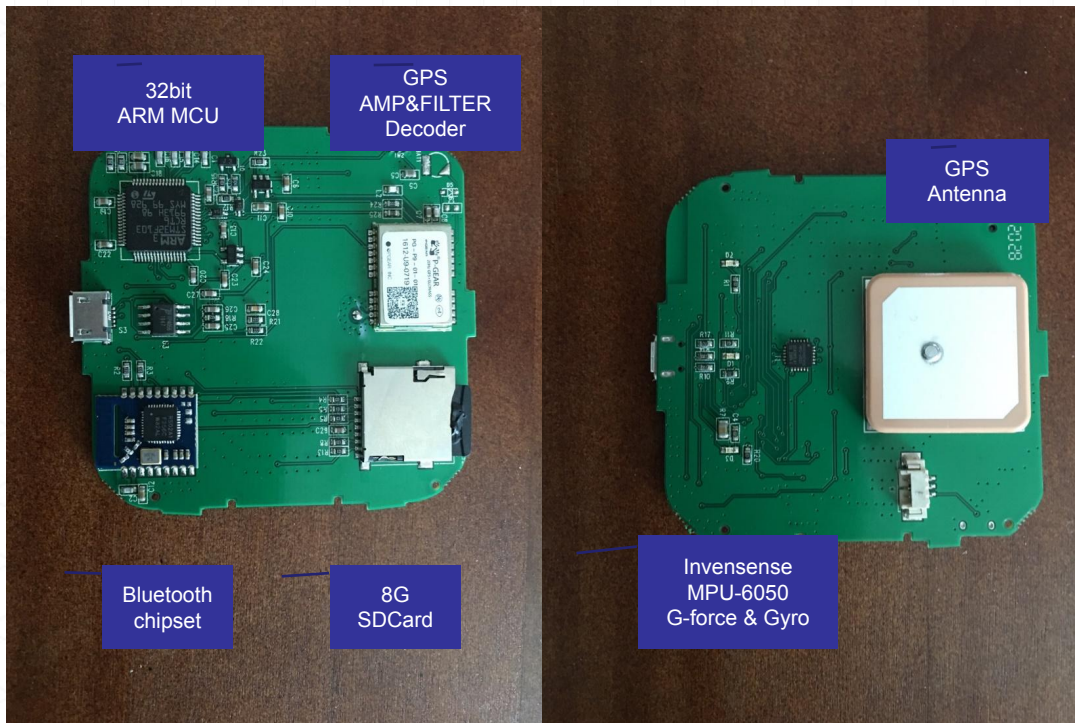


■ Issues

Dragy is a not a serious Product in EMC design, Bluetooth is too close with the GPS Antenna , and the Amplifier & Filter of GPS (very weak in EMI) is bare without metal cover, It will decrease the accuracy of measurement

■

Hardware Comparion



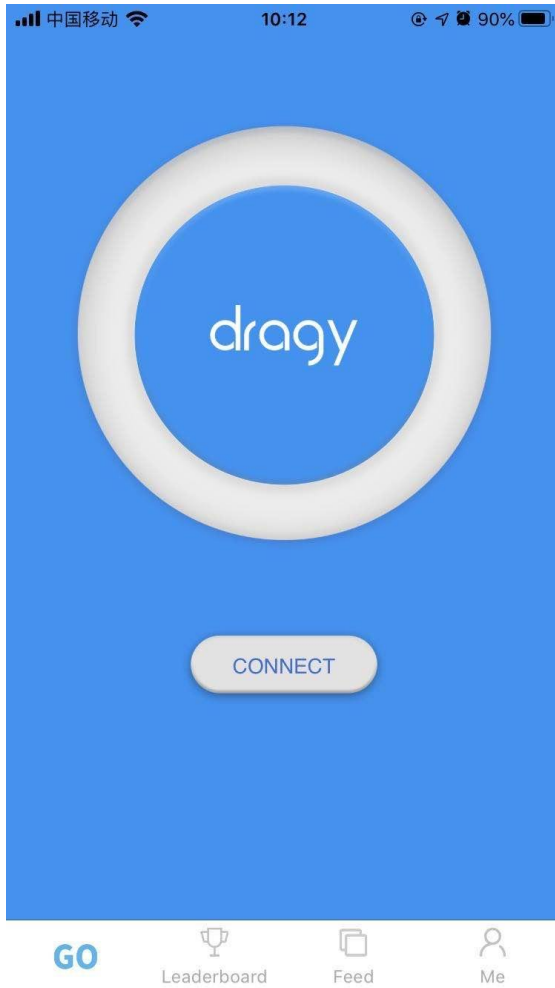
Powerful & Optimize EMC

Actually PGEAR's GPS Decorder is same with Dragy (ublox 8030), but PGEAR combine the GPS and MPU-6050 with complicated algorithm, so it can output accuracy 20hz data, and it has a 8G mem inside , so it can use separate with smartphone.

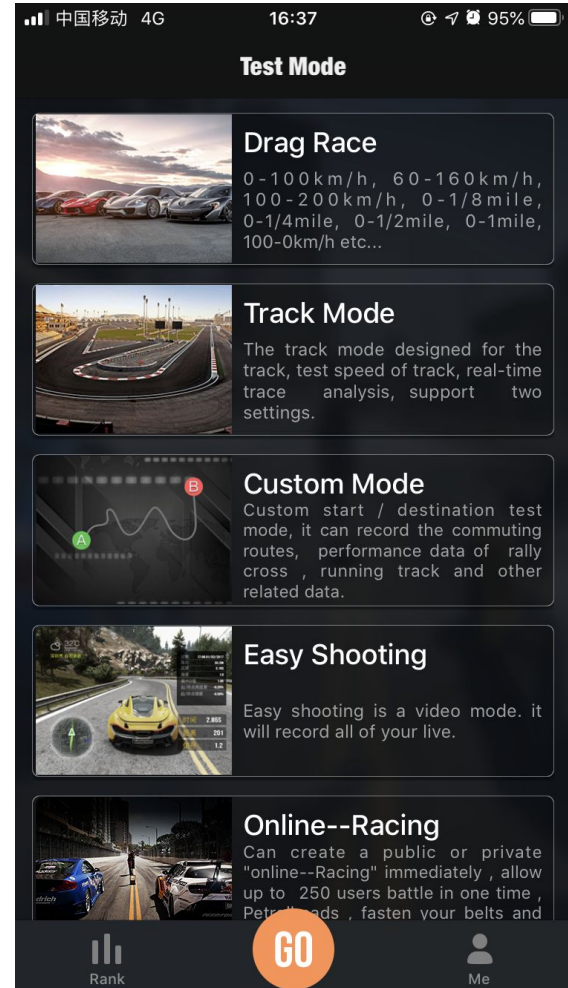
In the Graphic , we can find Bluetooth is far away with the GPS decoder and the Antenna, GPS's signal AMP&Filter&Decoder all integrate in one chipset , and with a metal cover , it make PGEAR more stabilize in strong EMI circumstance.

Why HDOP is IMPORTANT?

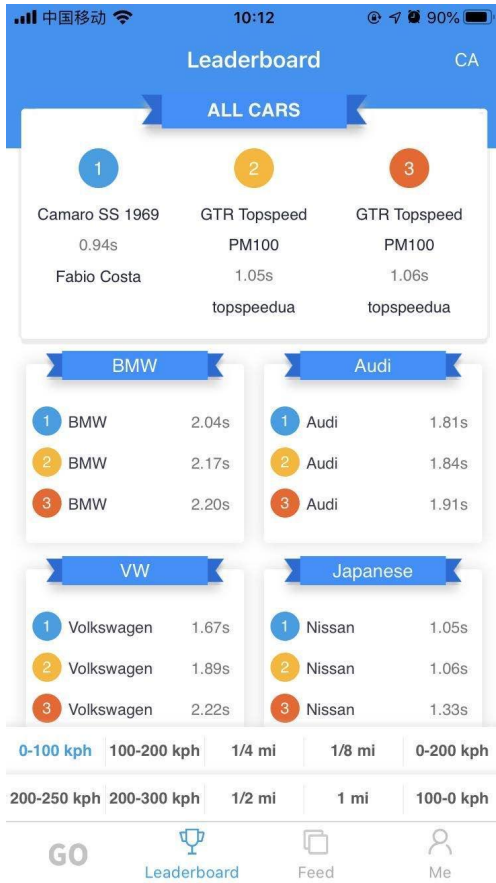
- HDOP-horizontal dilution of precision
- The effect of the DOP on the horizontal position value. The more good visible satellites low in the sky, the better the HDOP and the horizontal position (Latitude and Longitude) are.
- Above **1.2** means **Worst** GPS Signal.
- Below **0.75** means **Best** GPS Signal.
- Poor signal might cause inaccurate results.



Clean Opening Page

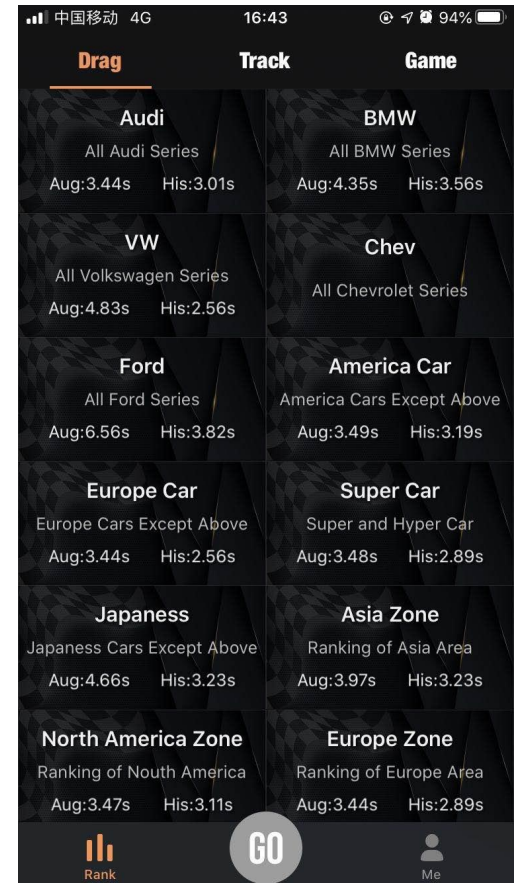
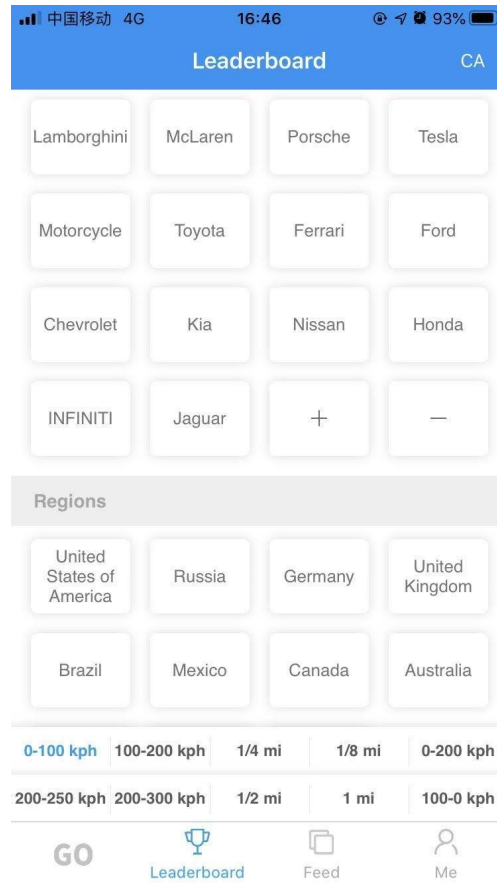


Vivid Opening Page



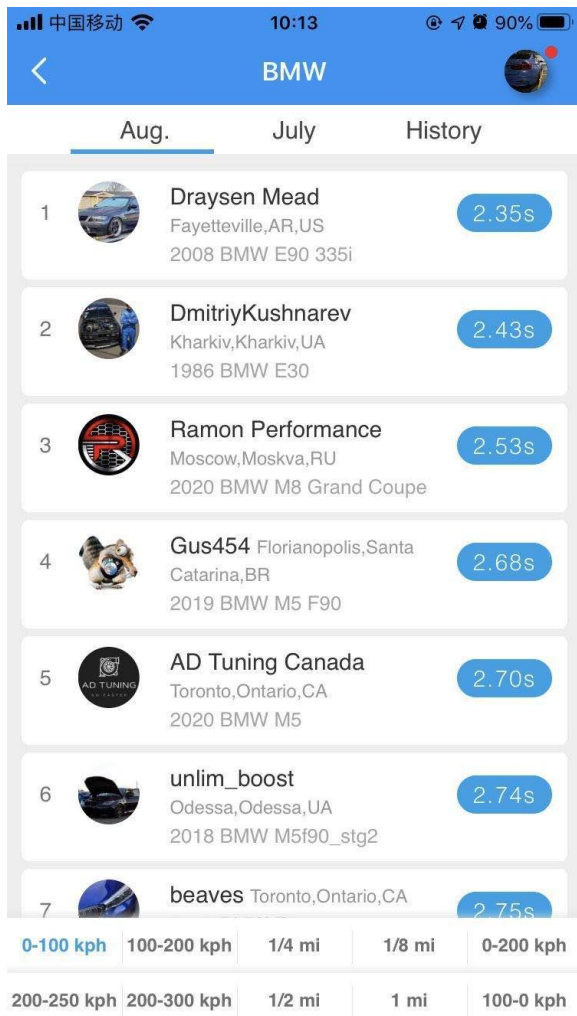
-Two Pages to show Groups

-Improper grouping

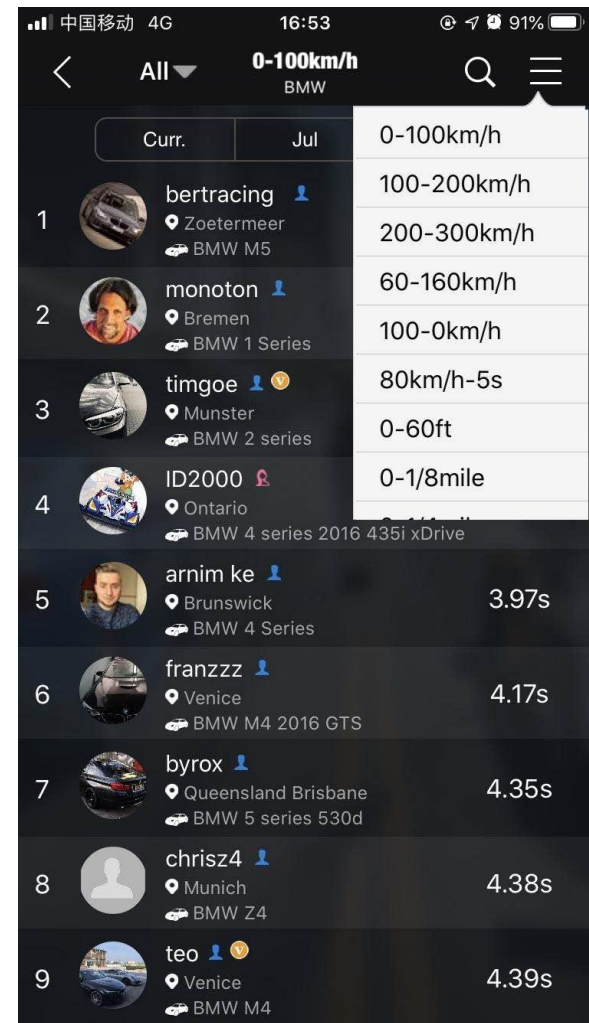


-One Page to show Groups

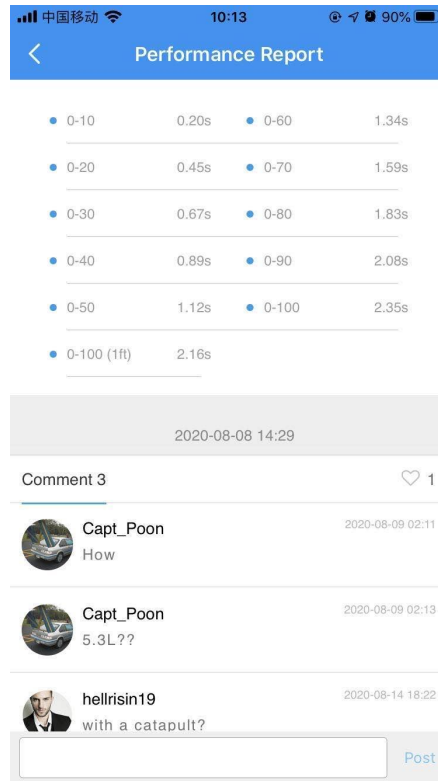
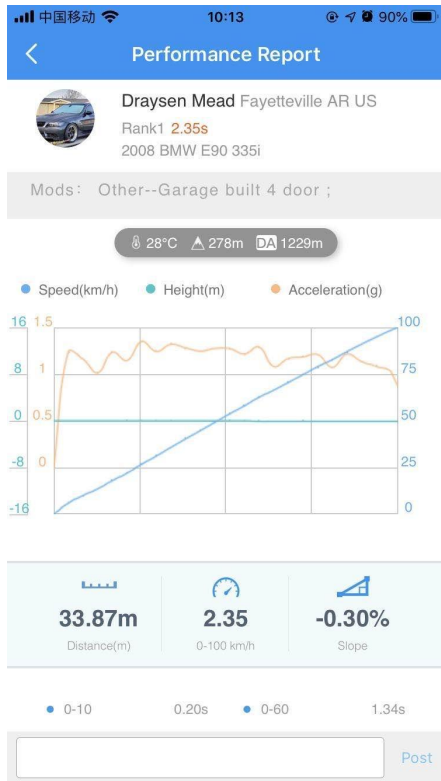
-Reasonable grouping



-Fussy design with different distance and speed below



-Flexible design to hidden different info up to the corner



-Results with simple design.

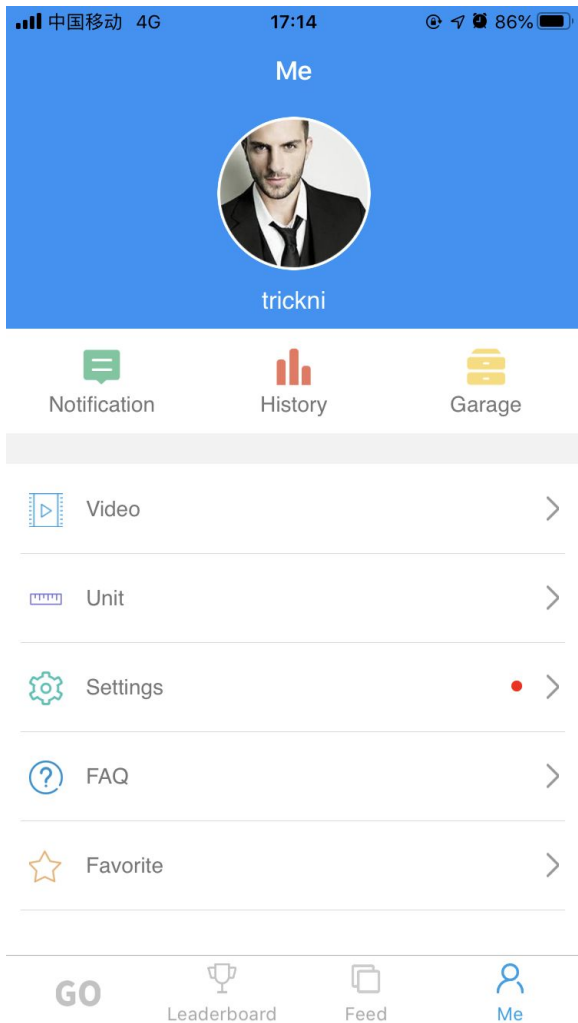
-Two screenshots to show.

-No Personal Description.

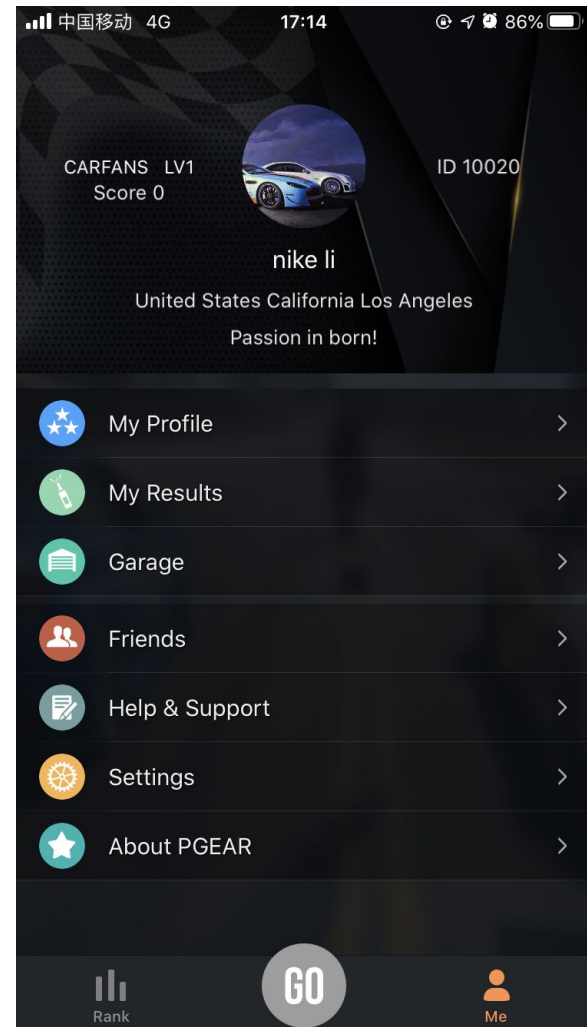
-Vivid design for results & details.

-“Screenshot” button for one page.

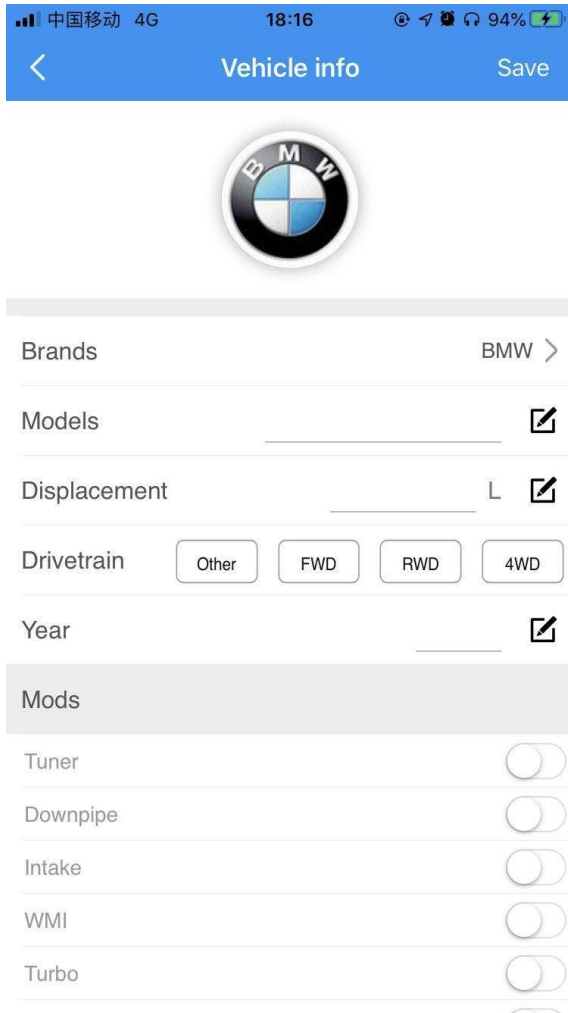
-Personal Description and Photos.



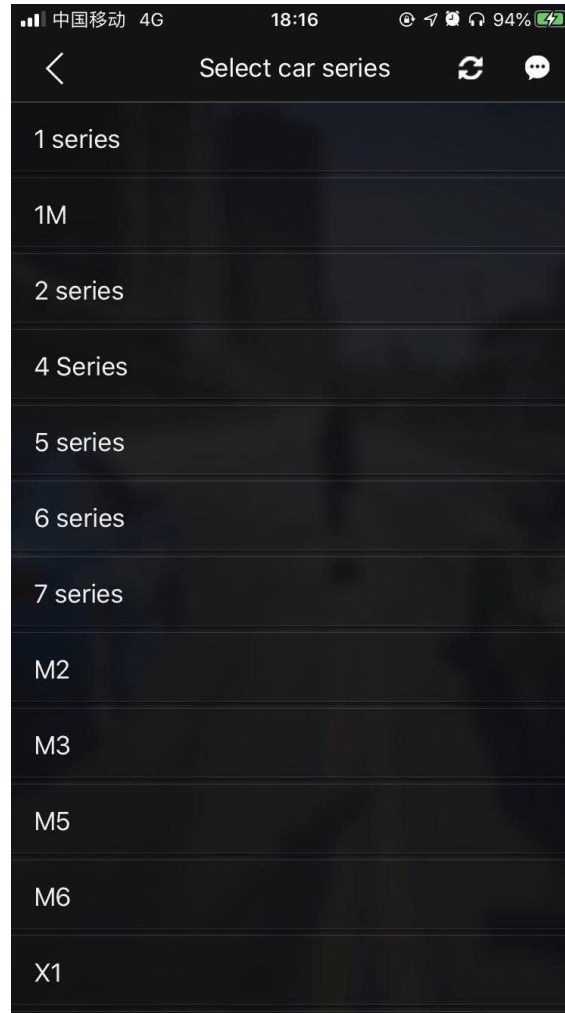
- Simple design and function
- No personal app ID
- No friends contact
- No service contact



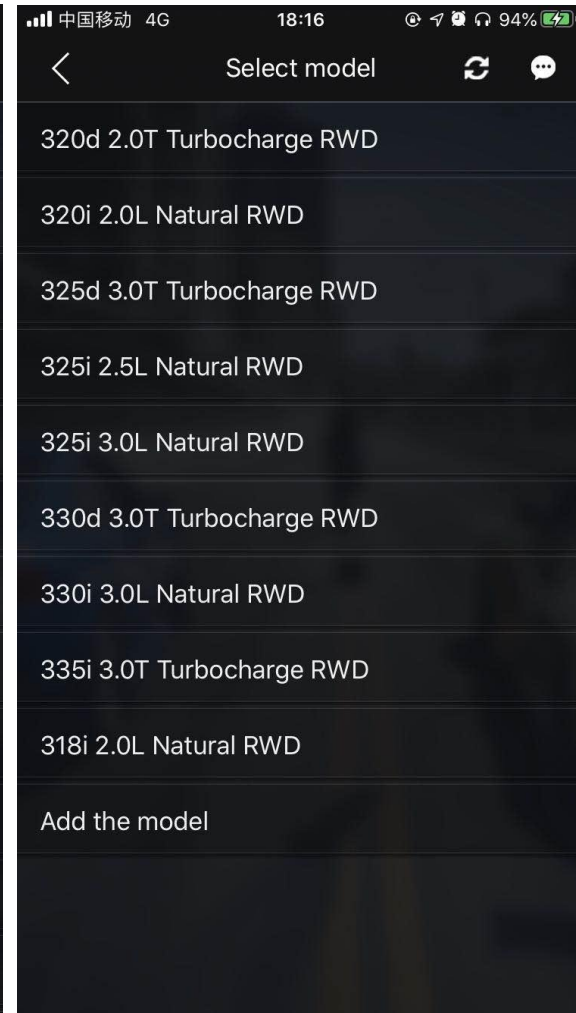
- Editable personal profile
- Unique ID for each user
- Convenient friends contact
- Help&Support with online service



-Input the info for cars by Handwriting.



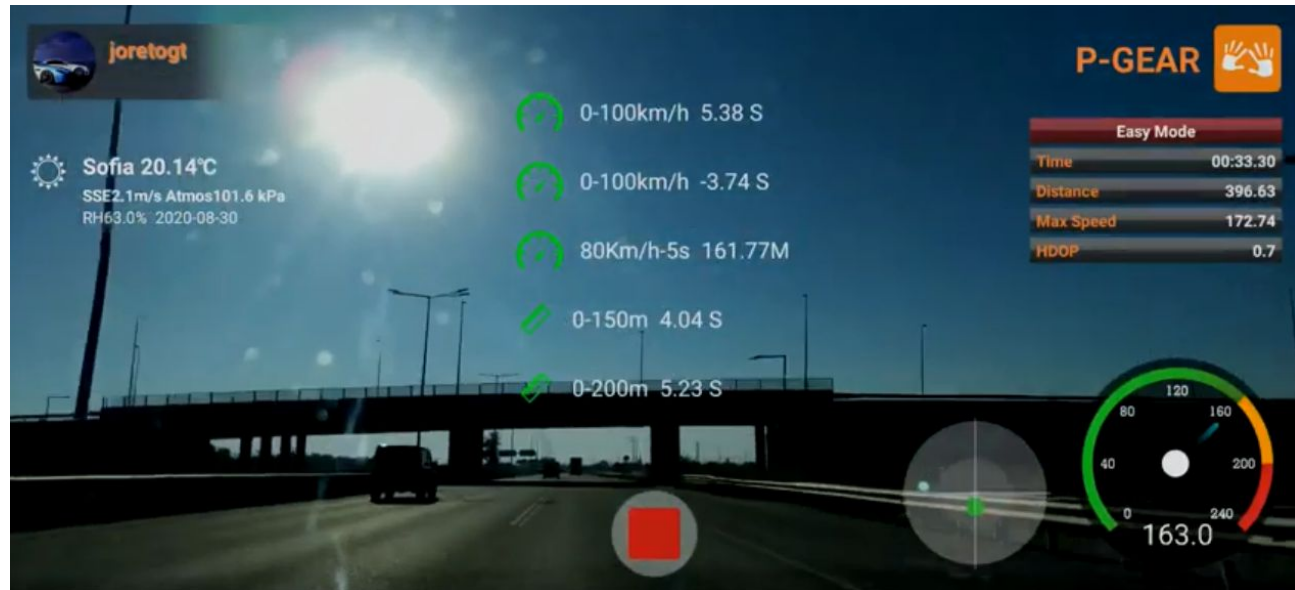
-All the Details with different Brands.

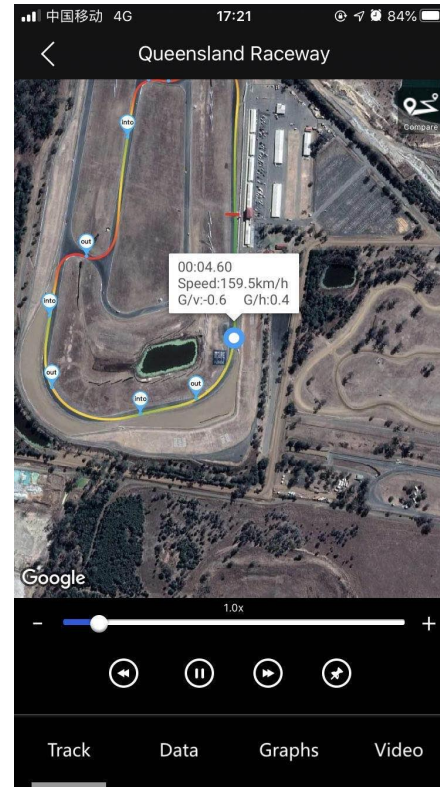
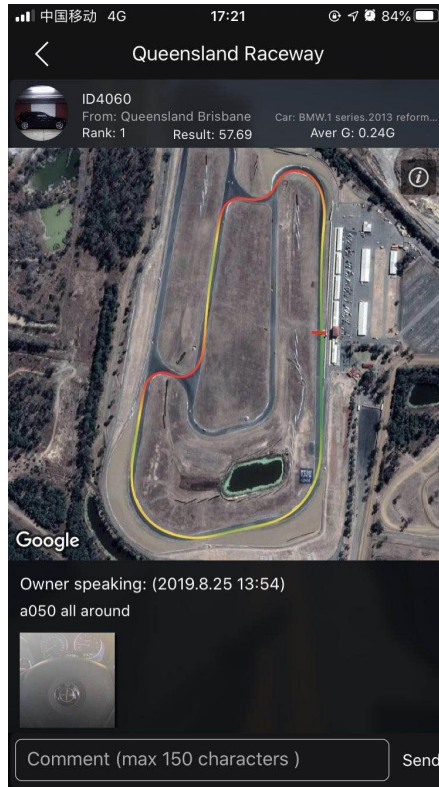
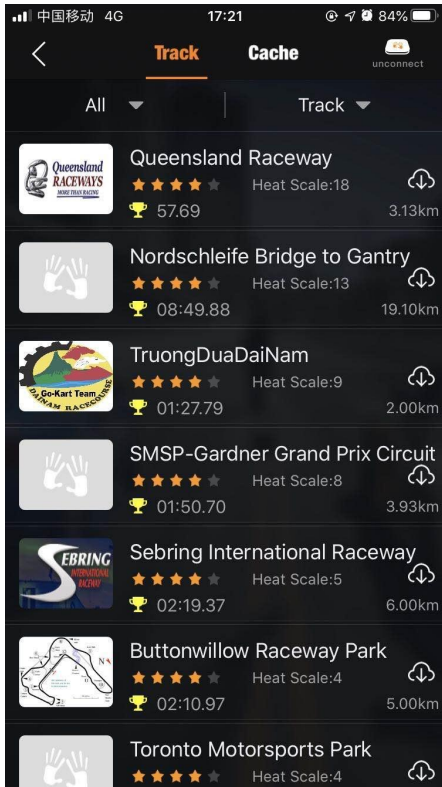




- No Weathers Details
- No HDOP Value
- Digital Meter

- Local Weathers Details
- DA and Dates
- HDOP Value Included
- Variable Meter



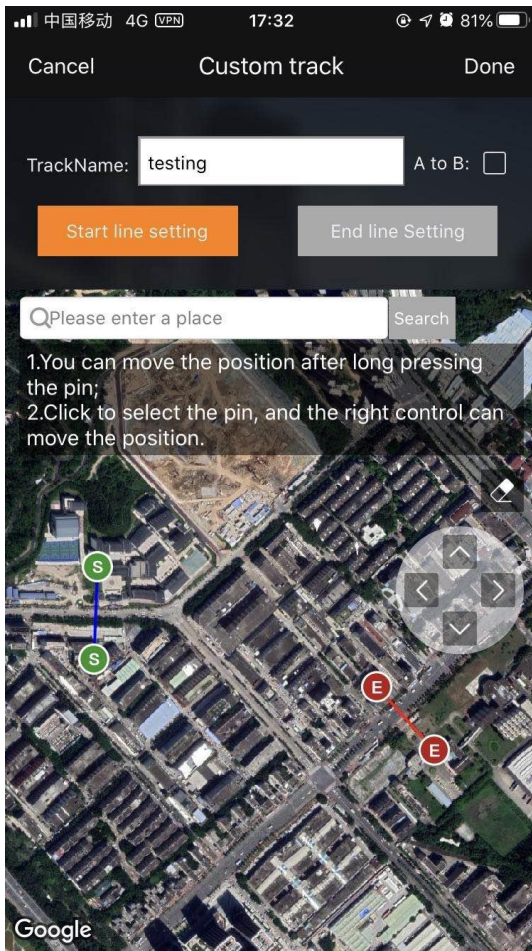


-Track Mode with all the circuits in the world.

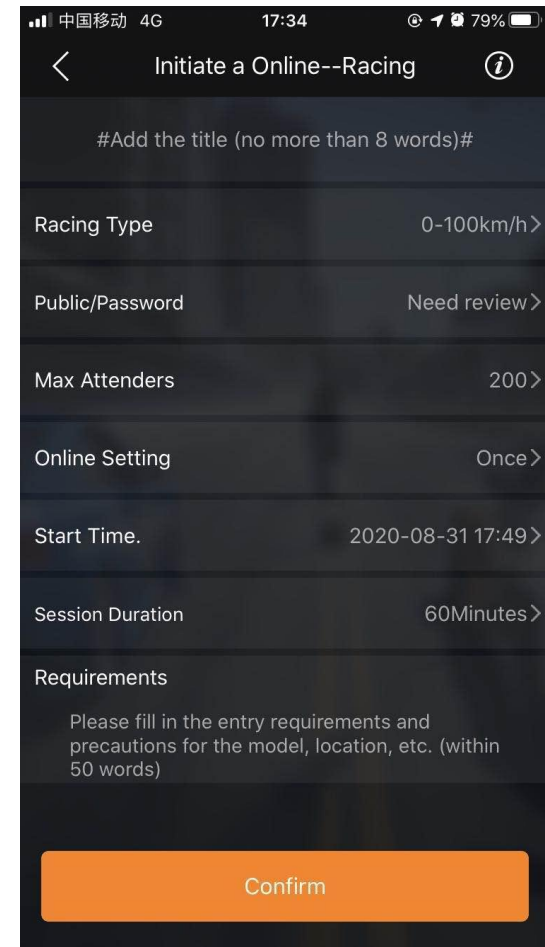
-Ranking and results with the same circuit.

-Playable data to check every moment.

-Details with the best record of user in the Graph.



- Custom Track Mode.
- Point A to Point B.
- Easy to set up the Start Line and End Line.
- The Track can be saved.



- Online Racing Mode.
- Different places, same rules.
- Results upload automatically.
- No gathering, No police disturb.
- Race with people from the world.