





# Yi Camera USB GUIDE

# File list

---

 guide.pptx	2015/7/30 19:27	Microsoft Powe...	41 KB
 setup.exe	2015/7/29 18:14	应用程序	19,032 KB
 YDXJv22_1.2.6_build-20150709090932_b1031_i841_s1038.elf	2015/7/9 9:26	ELF 文件	45,156 KB
 YDXJv22L_1.2.6_build-20150709094743_b1031_i841_s1038.elf	2015/7/9 9:55	ELF 文件	45,156 KB

## 1. setup.exe

update tool

## 2. YDXJ\*\* .elf

firmware file

### **note:**

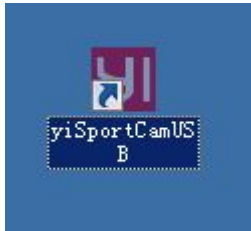
Check your camera SN at the battery compartment

Z2215\*\* matches YDXJV22\_1.2.6\*\* .elf

Z22L5\*\* matches YDXJV22L\_1.2.6\*\* .elf

# Installing and Updating

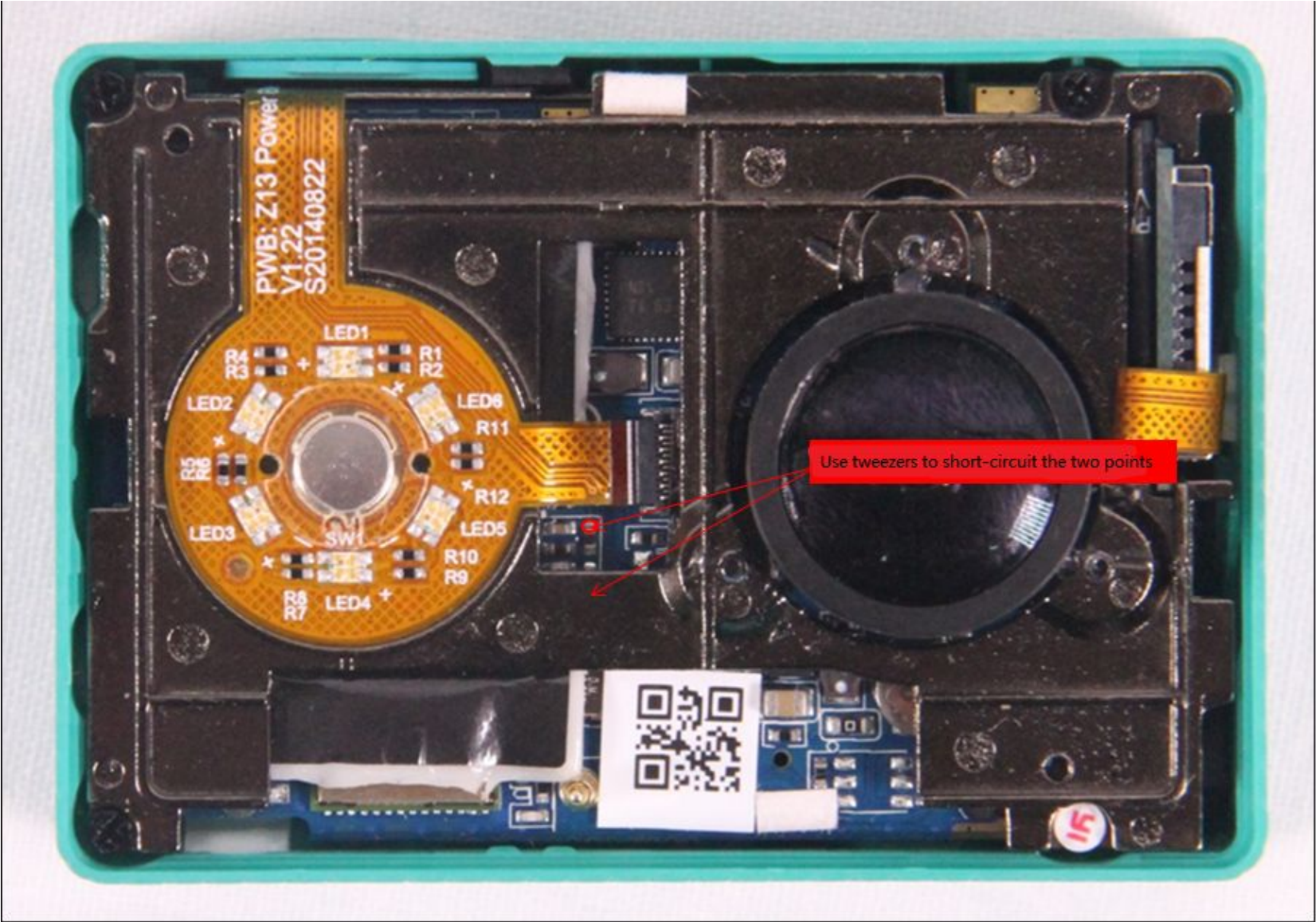
1. Double click on “setup.exe” and Install the USB tool
2. It’s named as “yiSportCamUSB”



## Preparing the Hardware:

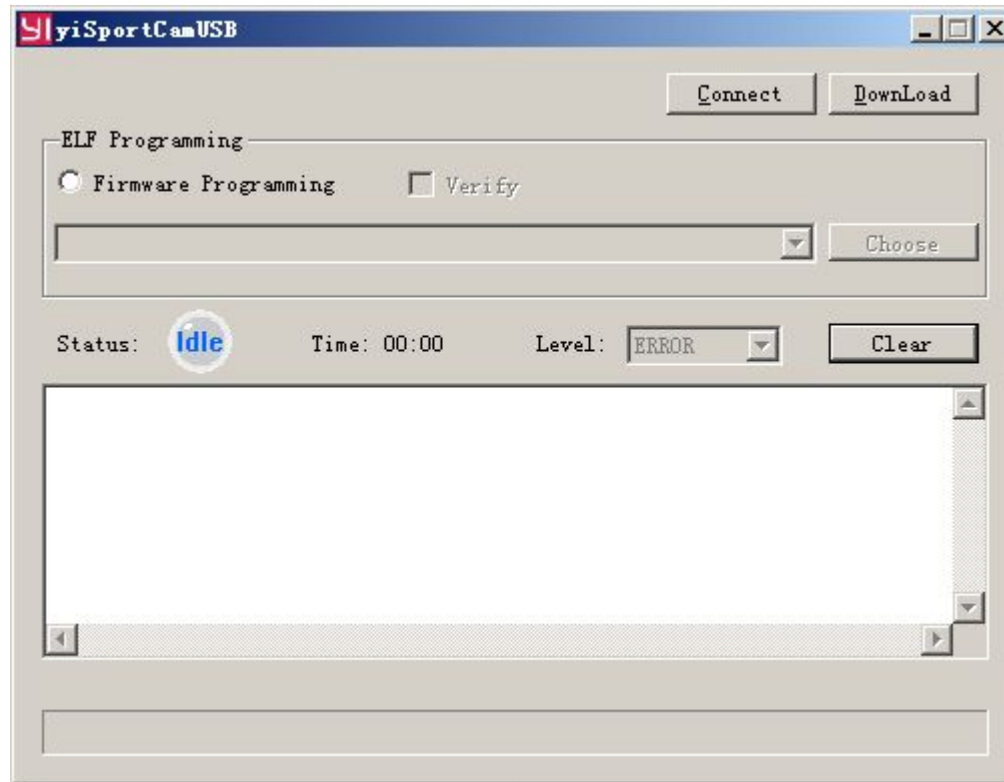
1. Dismantle the front panel of the camera
2. Connect the camera USB to PC with a micro USB cable
3. Use tweezers to short-circuit in two points
  - > One point above the Resistor
  - > One point at GND
4. Press the power button and turn on the camera

# Preparing the Hardware: image



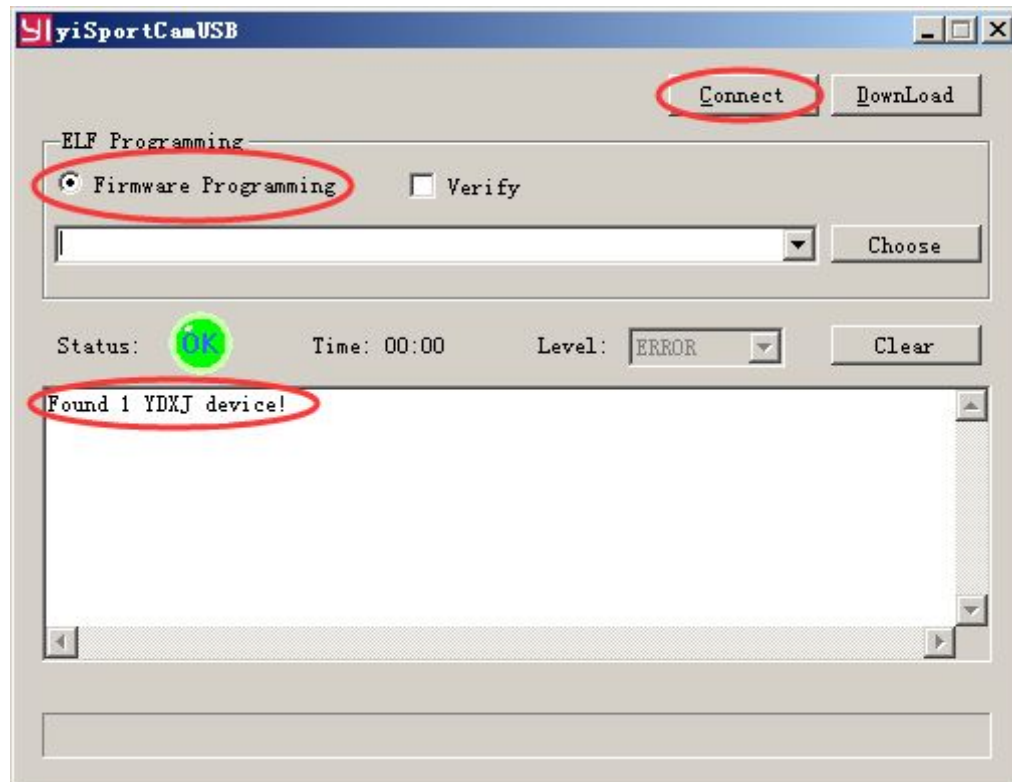
# Updating the Firmware

Open yiSportCamUSB



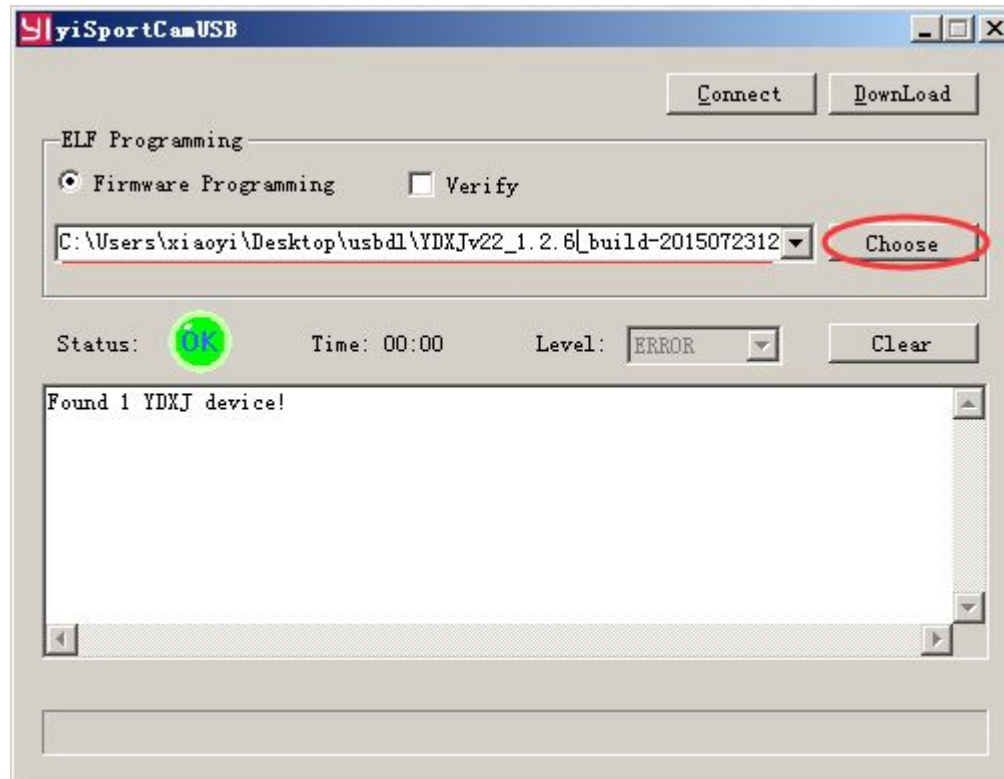
# Updating the Firmware

1. Check “Firmware Programming” radio button
2. Click on “Connect” button
3. If the short-circuit is successful, yiSportCamUSB will prompt “Found 1 YDXJ device!”



# Updating the Firmware

4. Click on “Choose” button and choose the option YDXJV22\_1.2.6\*\*.elf





# Updating the Firmware

5. Click on “Download” button and update the firmware

The status label will show “OK”, the text will show “Done!!” and the camera will beep 3 times later.

Now, the upgrade is complete.

