



**Pollution of water**



- Today, many people throw garbage into streams, lakes, rivers and seas, resulting in reservoirs final resting place of cans, bottles, plastics, and other household products.





• In the seas and oceans through rivers directly from land, ships and barges dropped liquid and solid waste. Some of these pollutants deposited in the coastal area, and the part under the influence of ocean currents and wind dispersed in different directions. In the surface layer of the sea in large numbers develop bacteria







- Recently, near large cities are increasing pathogenic species of bacteria, pathogens of the gastro-intestinal and other diseases.

- In the past, people mostly used soap from the fat of animals and plants for all types of washing. Such fats are not a big threat to the environment, but they were also not effective in humans.







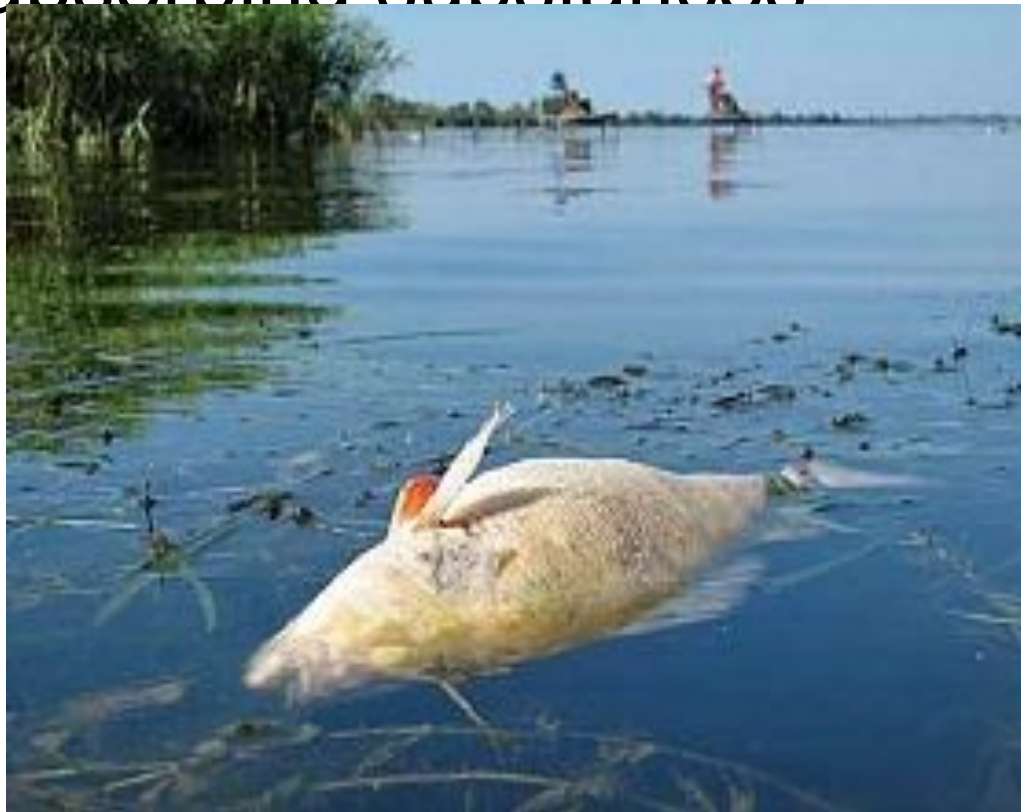
- But most cleaning products today are synthetic cleaners and are derived from the petrochemical industry.



- Most cleaners and washing powders contain phosphates, which are used to soften the water among other things. These and other chemicals contained in washing powders affect the health of all life in the water.



- Domestic garbage are dangerous not only because they are a factor in the transmission of certain human diseases, especially enteric (typhoid, dysentery, cholera), but the fact that they contain a significant amount of oxygen-absorbing substances





- Oxygen to support life in the sea, it is a necessary element for the process of decomposition of organic substances released into the aquatic environment. If public garbage coming into the water in very large numbers, there may come a significant reduction of soluble oxygen for marine life.





- Recently, a special kind of solid waste, polluting the oceans, are plastics (plastic film and containers, plastic net, etc.). These materials, being lighter than water, the long swim to the surface to contaminate the sea coast.



- Plastic waste - a serious danger to navigation. They span the propellers of ships clog the cooling system piping and marine engines are often the cause of shipwrecks.



- Plastic waste - bottles, cans, network-also in grave danger. In 1972, Brazil was discovered 30 dead whales. The cause of their death was a plastic film. Together with the water she inhaled whales.





- Waste water treatment does not give the desired effect, because it allows the water to remove solids, and only a small fraction of dissolved nutrients.

