

# Phylum: Nematoda



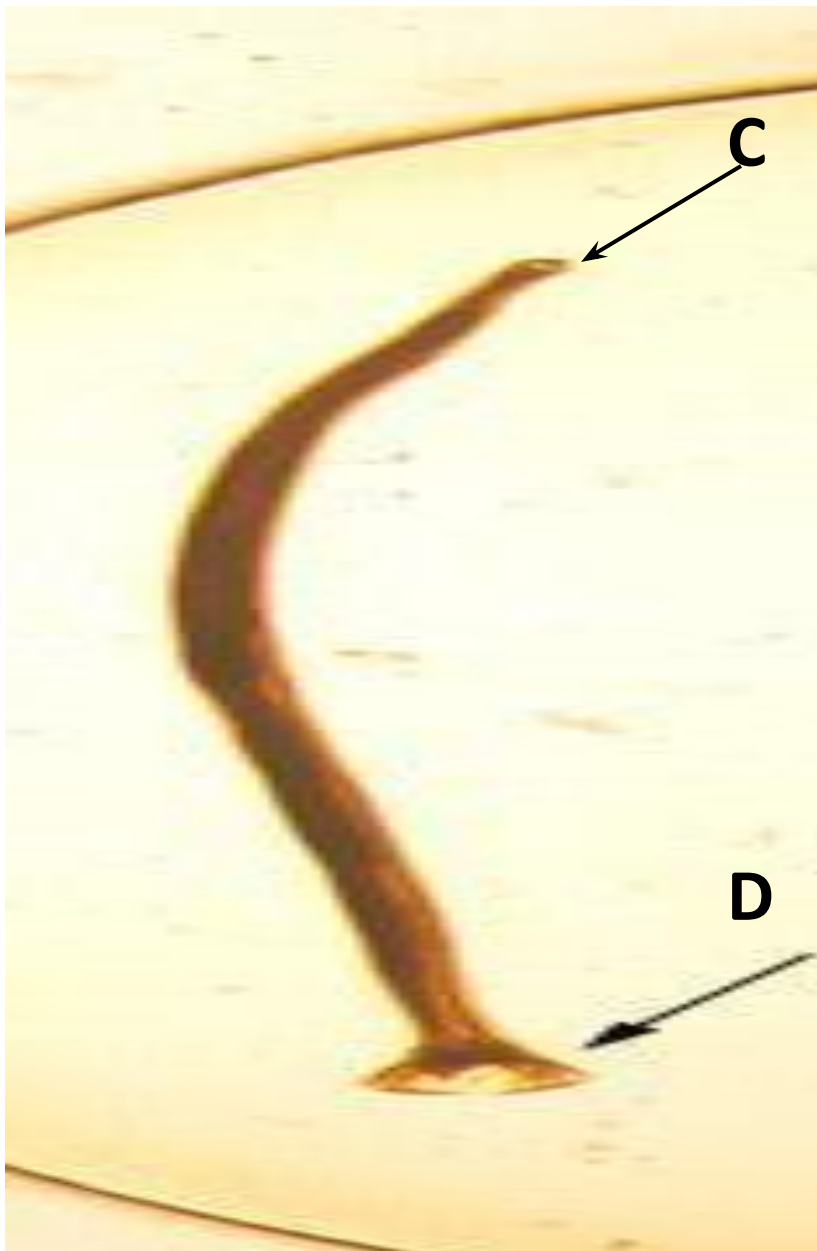
# Phylum: Nematoda

- They are round worms
- Triploblastic animals
- Have complete digestive system with openings at both ends
- Pseudocoelomate

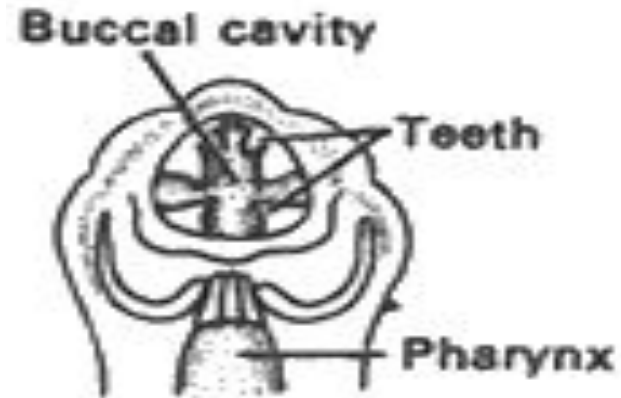
**Ex1: *Anclystoma sp.***



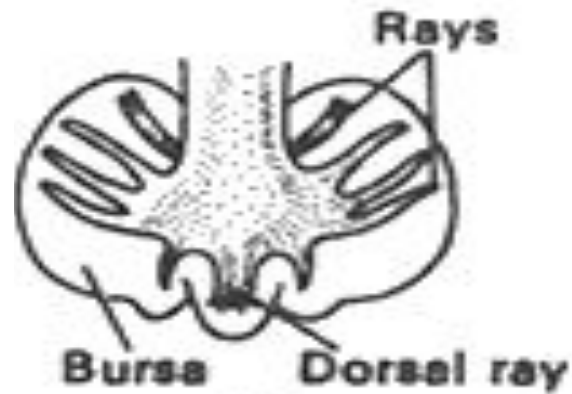
**Adult female**



**Adult male**



**C. Anterior end**



**D. Posterior end**

***Ancylostoma duodenale***

Female

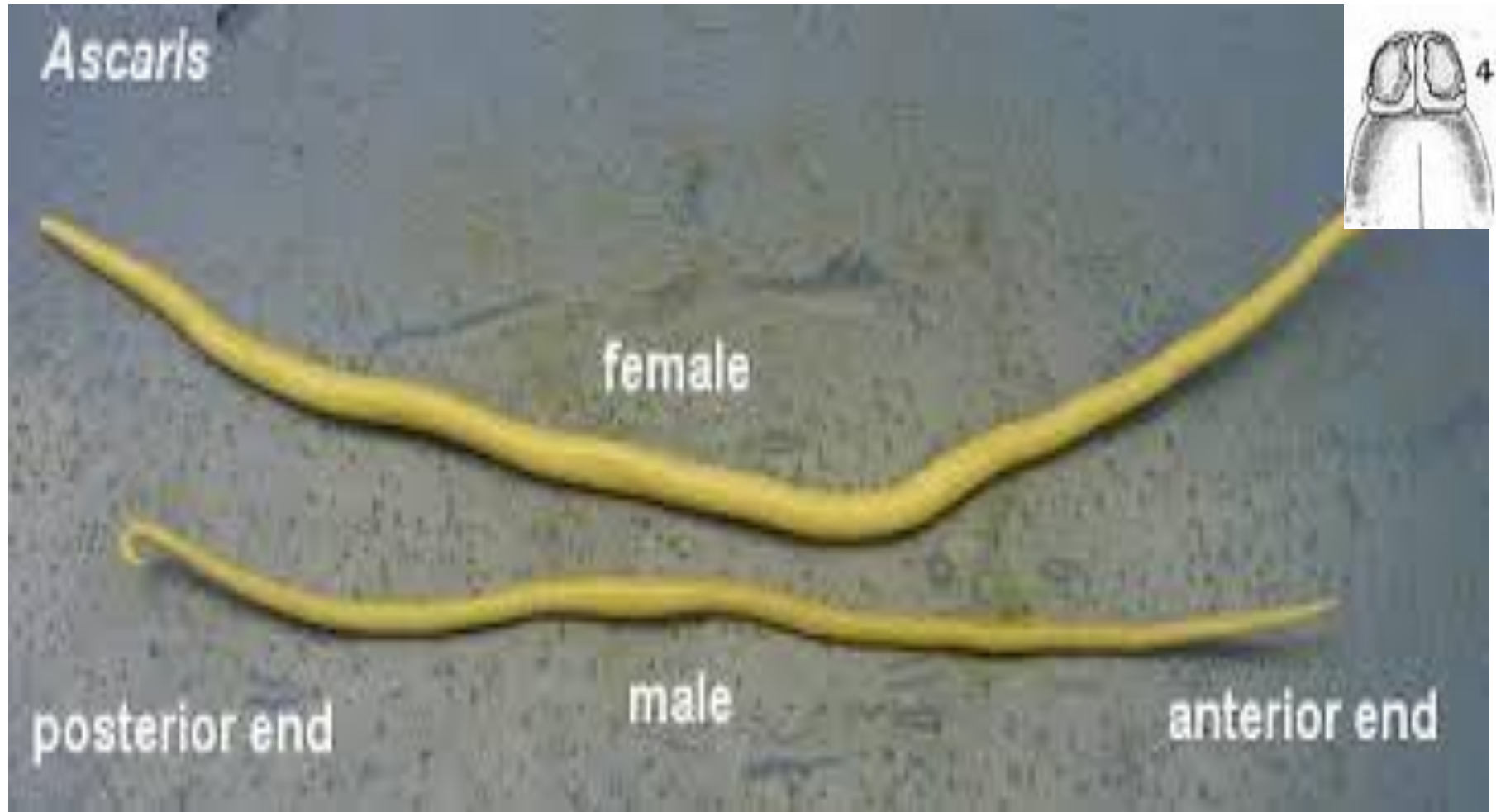


Male

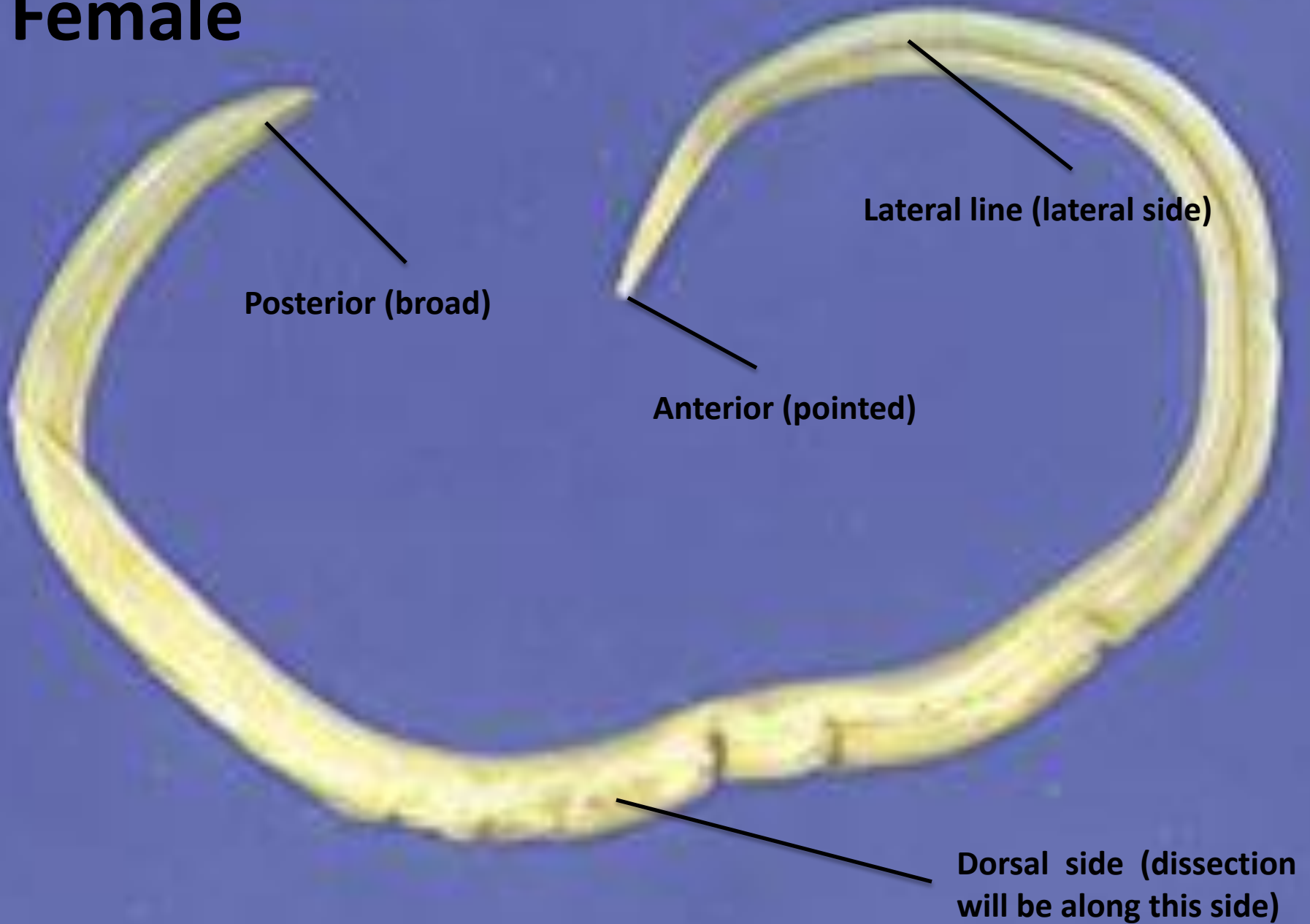


2mm

# *Ascaris sp.*



# Female



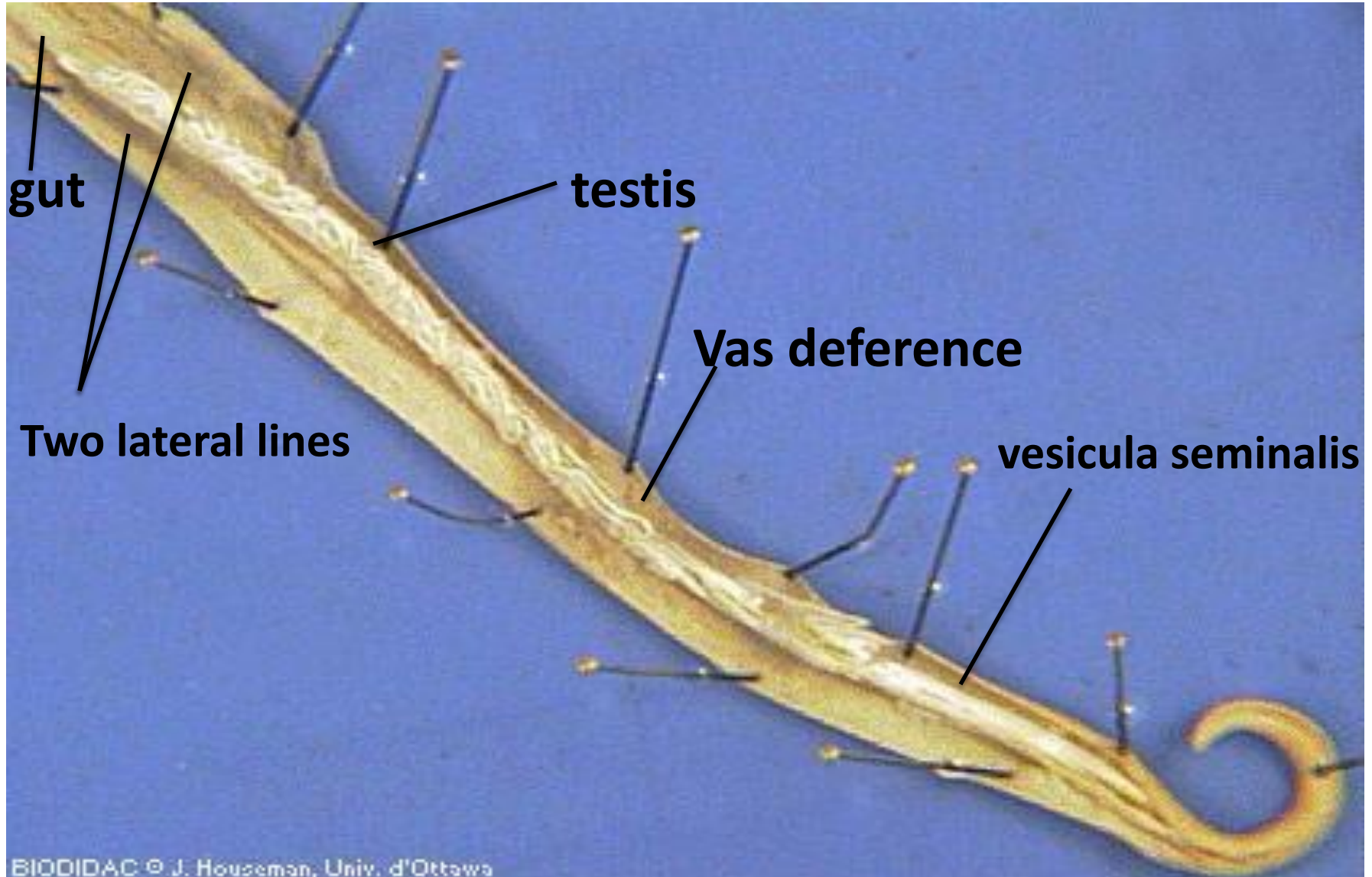
Posterior (broad)

Anterior (pointed)

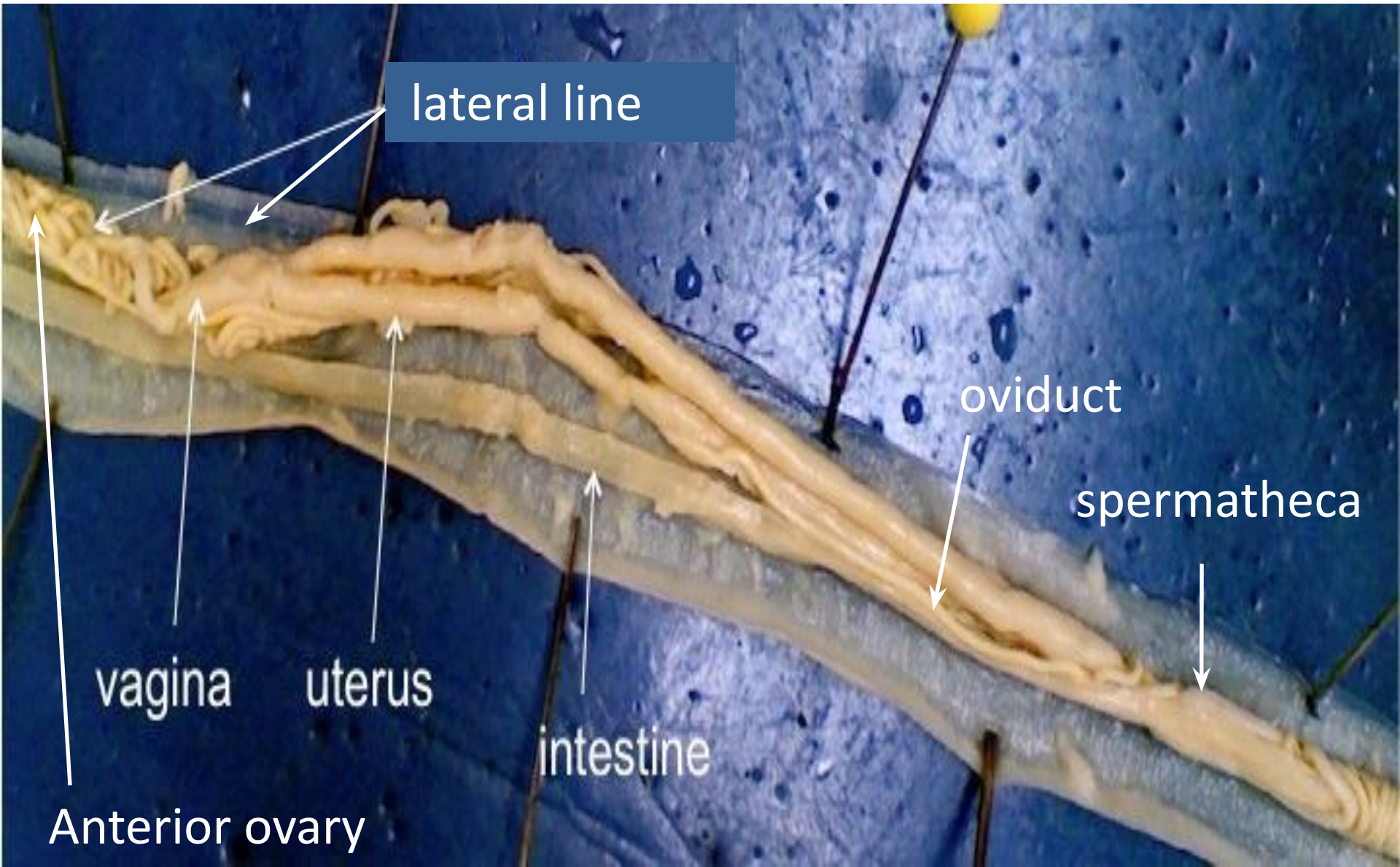
Lateral line (lateral side)

Dorsal side (dissection  
will be along this side)

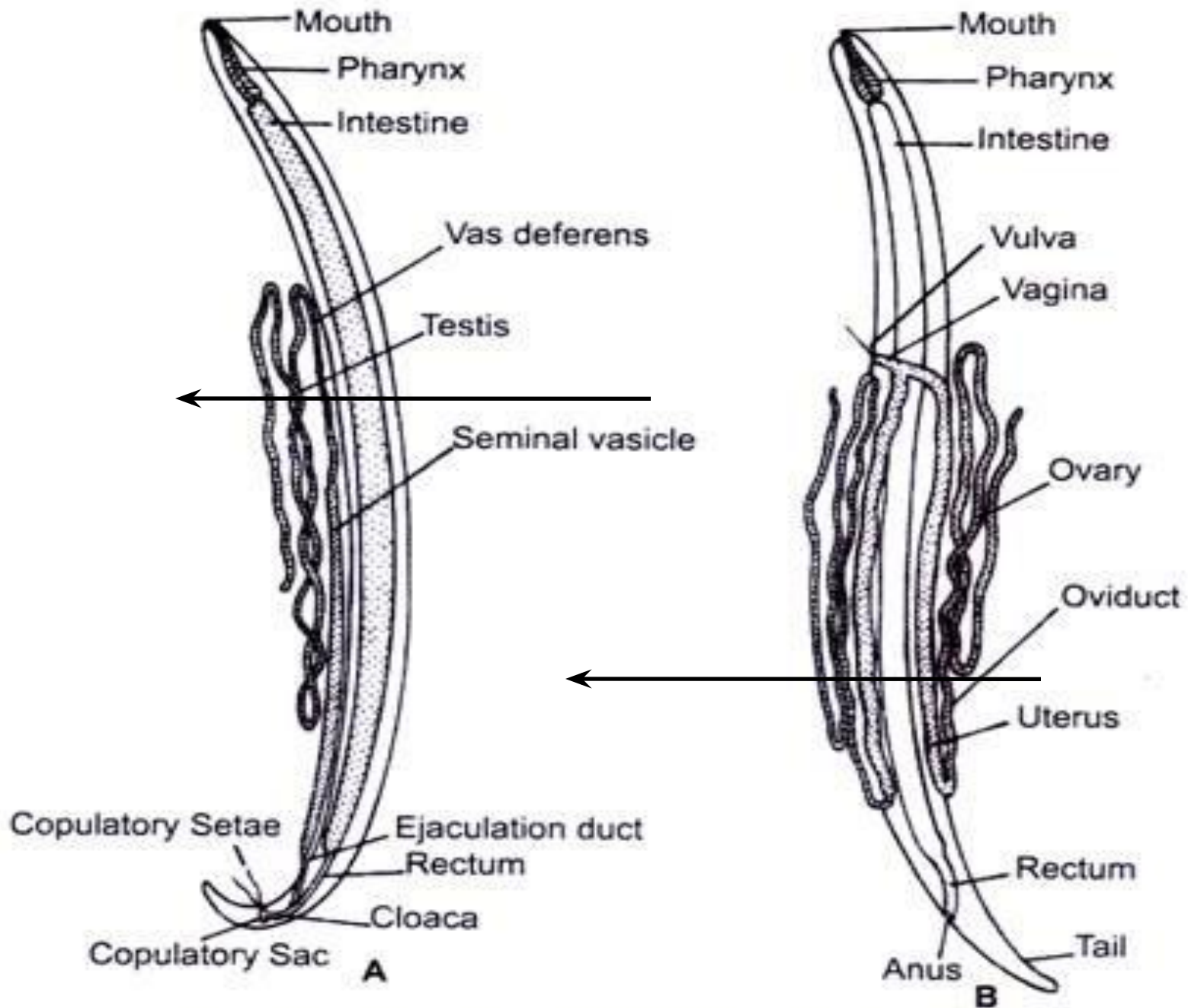
# Male Reproductive System



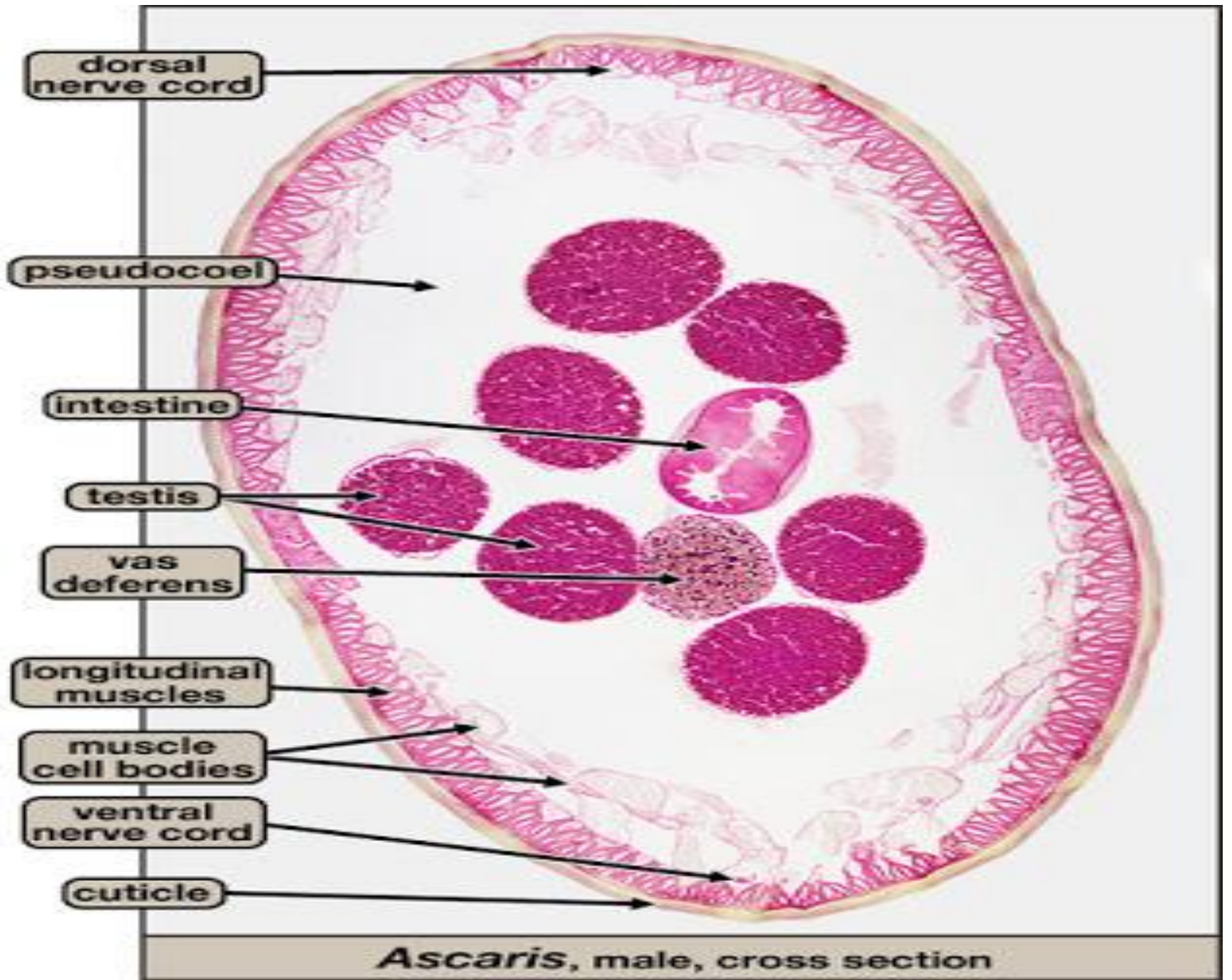
# Female reproductive system



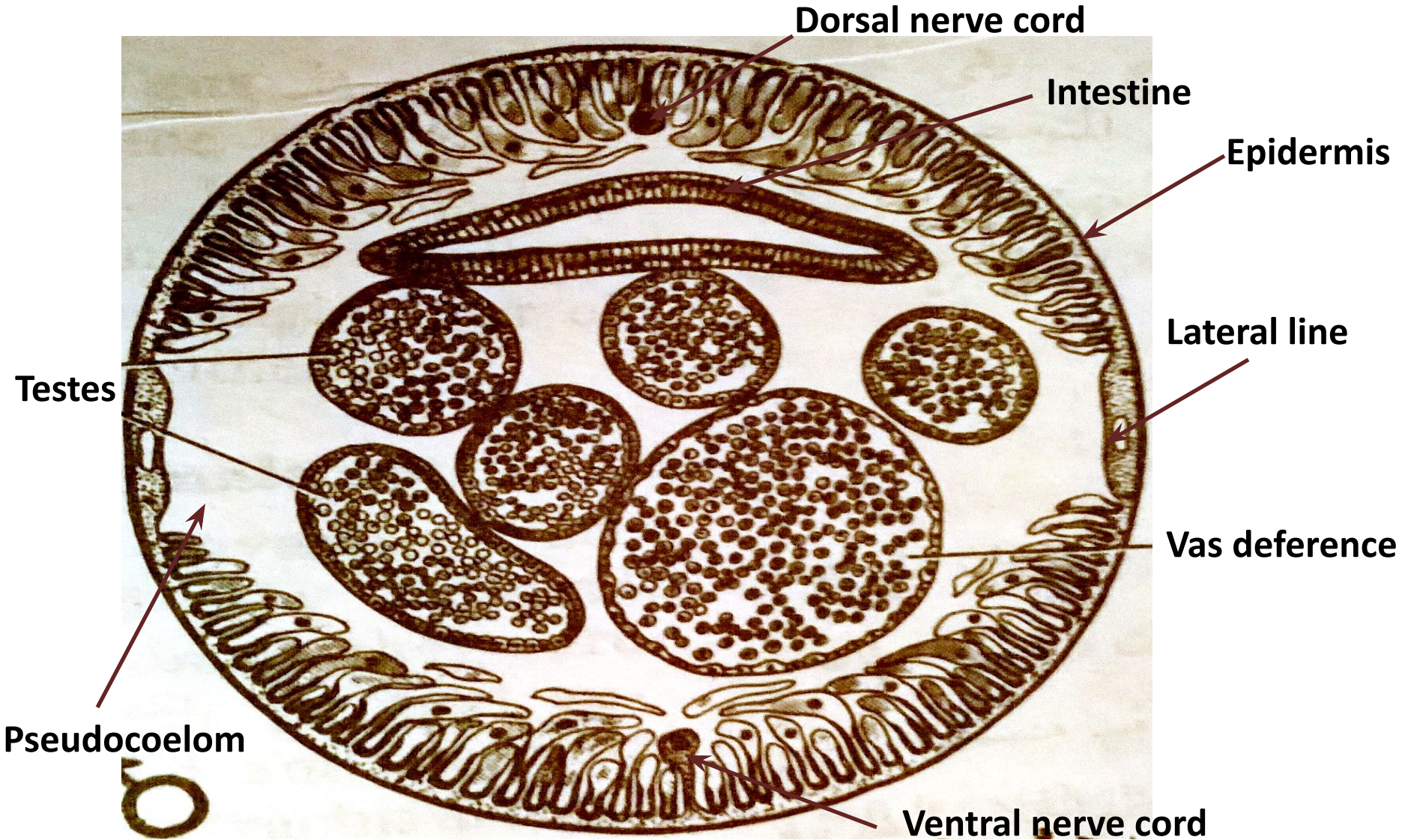


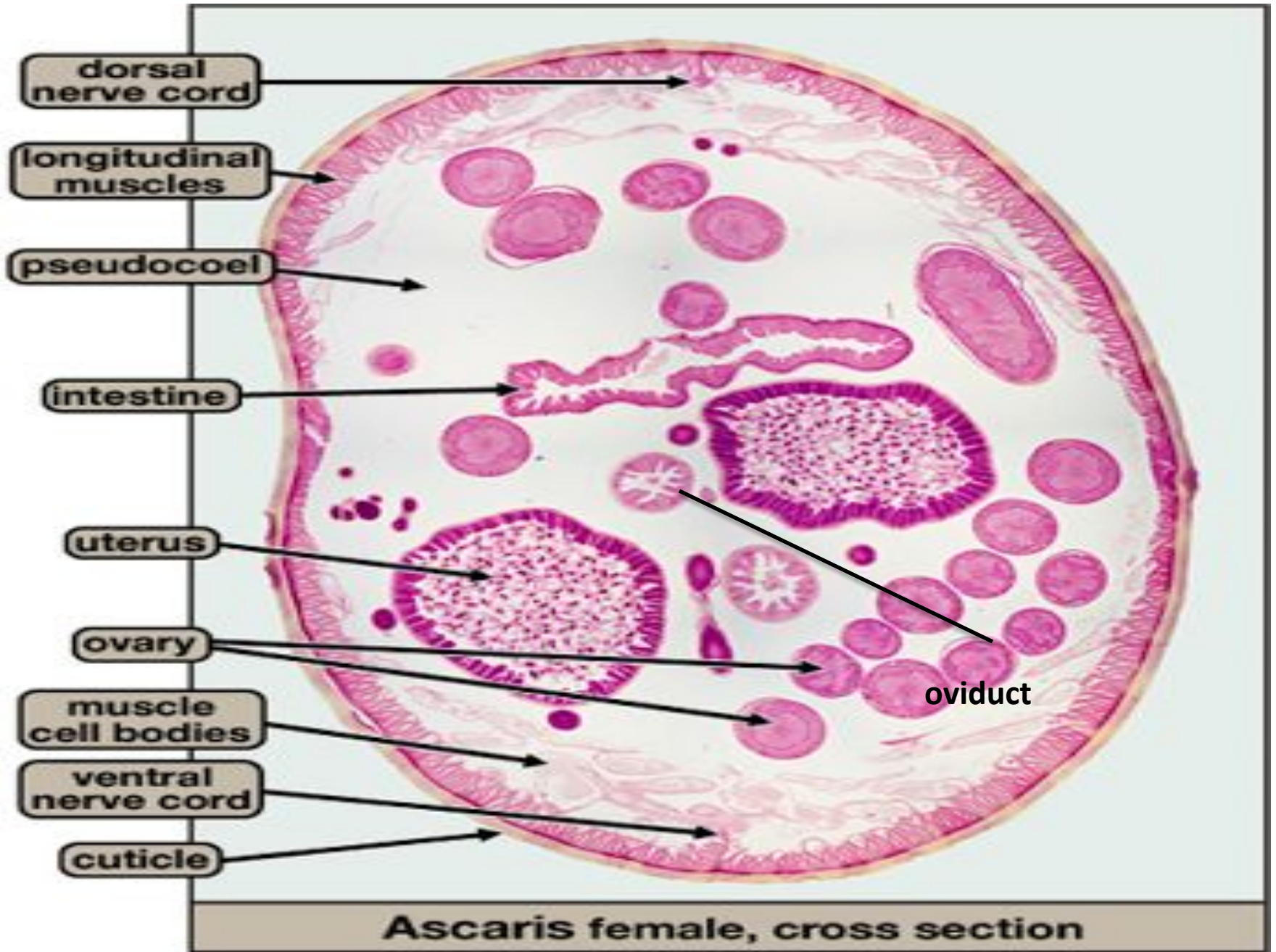


*Ascaris* : (A) Adult male (B) Adult female



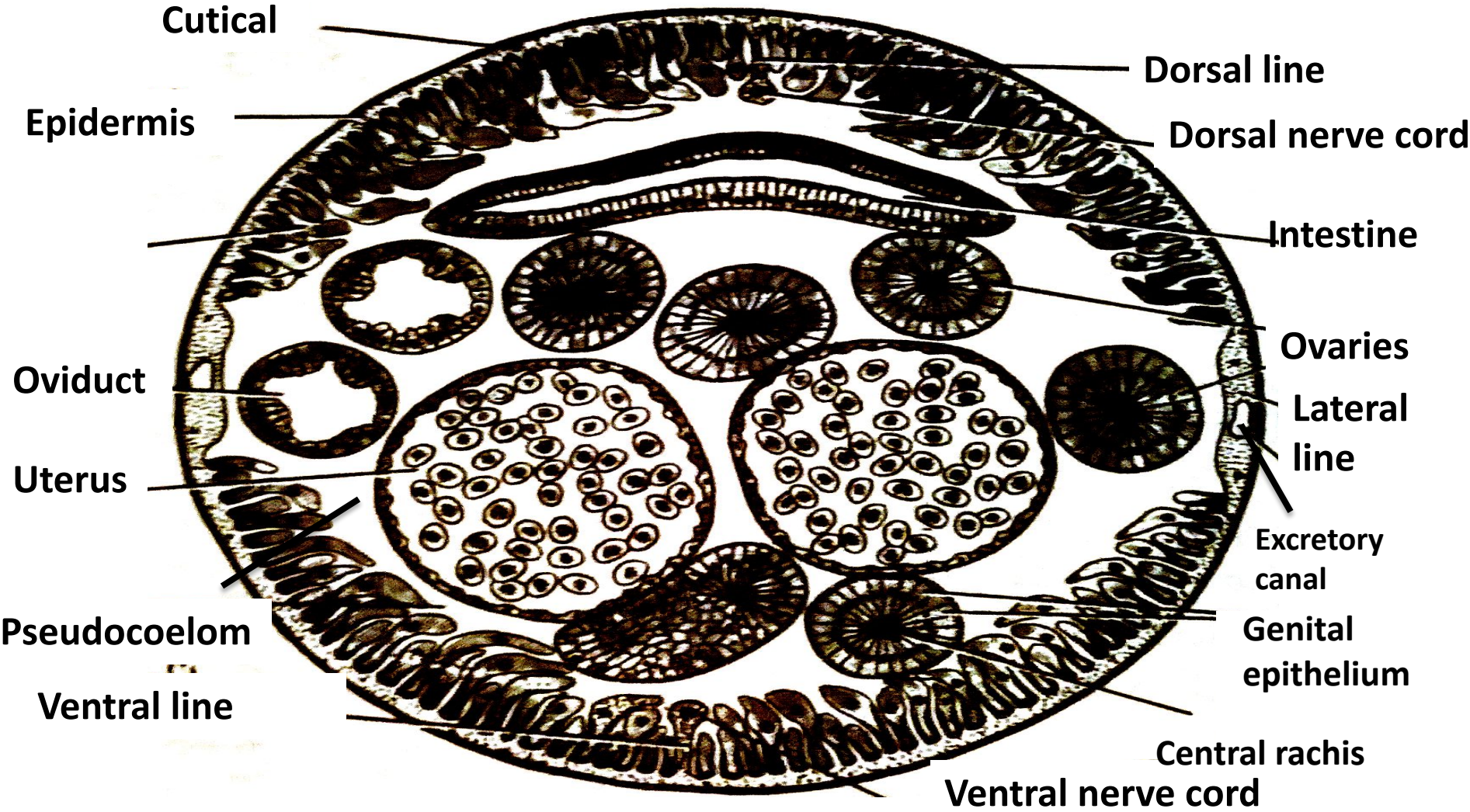
# T.S. Male ascaris

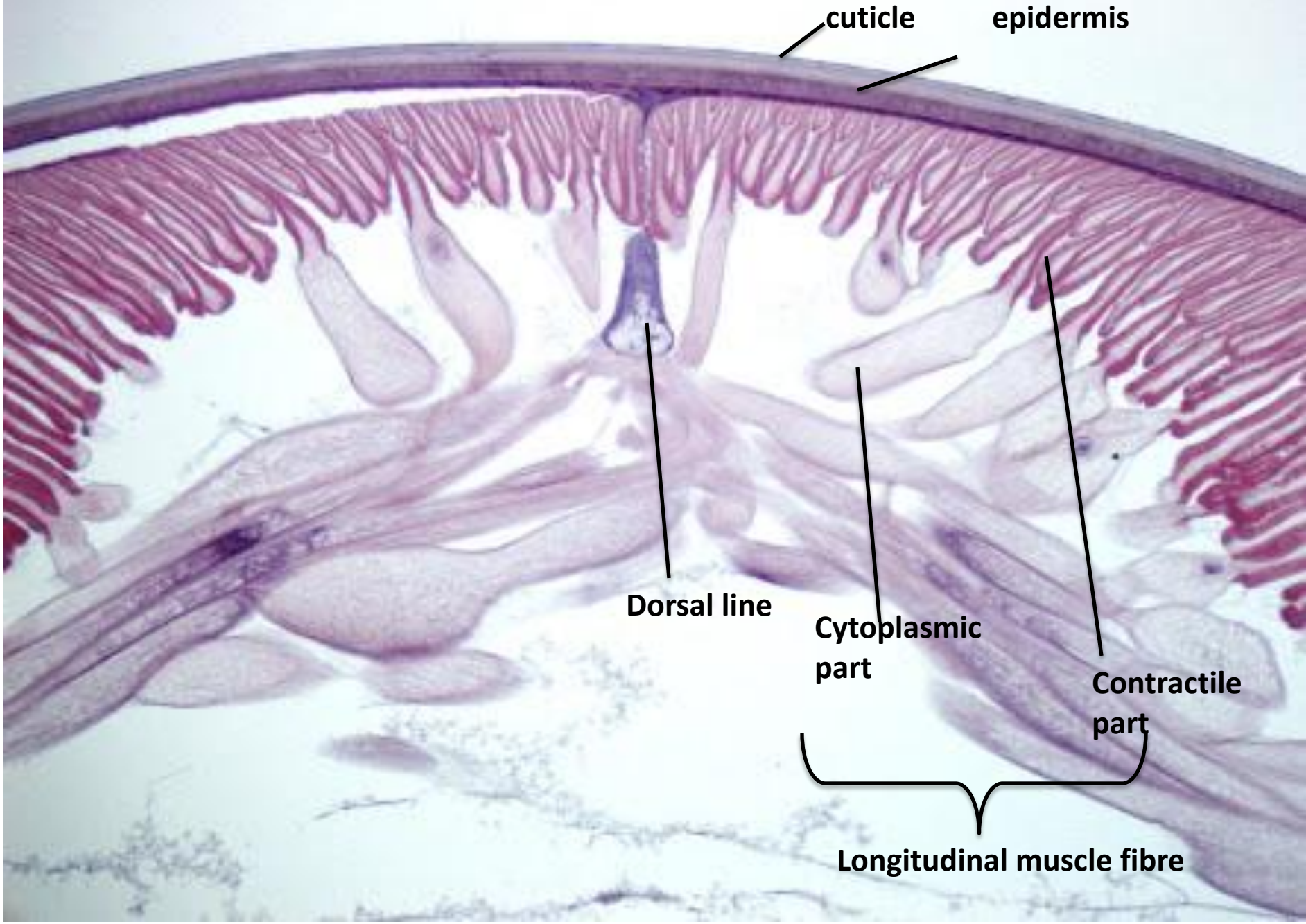




**Ascaris female, cross section**

# T.S. female ascaris





cuticle

epidermis

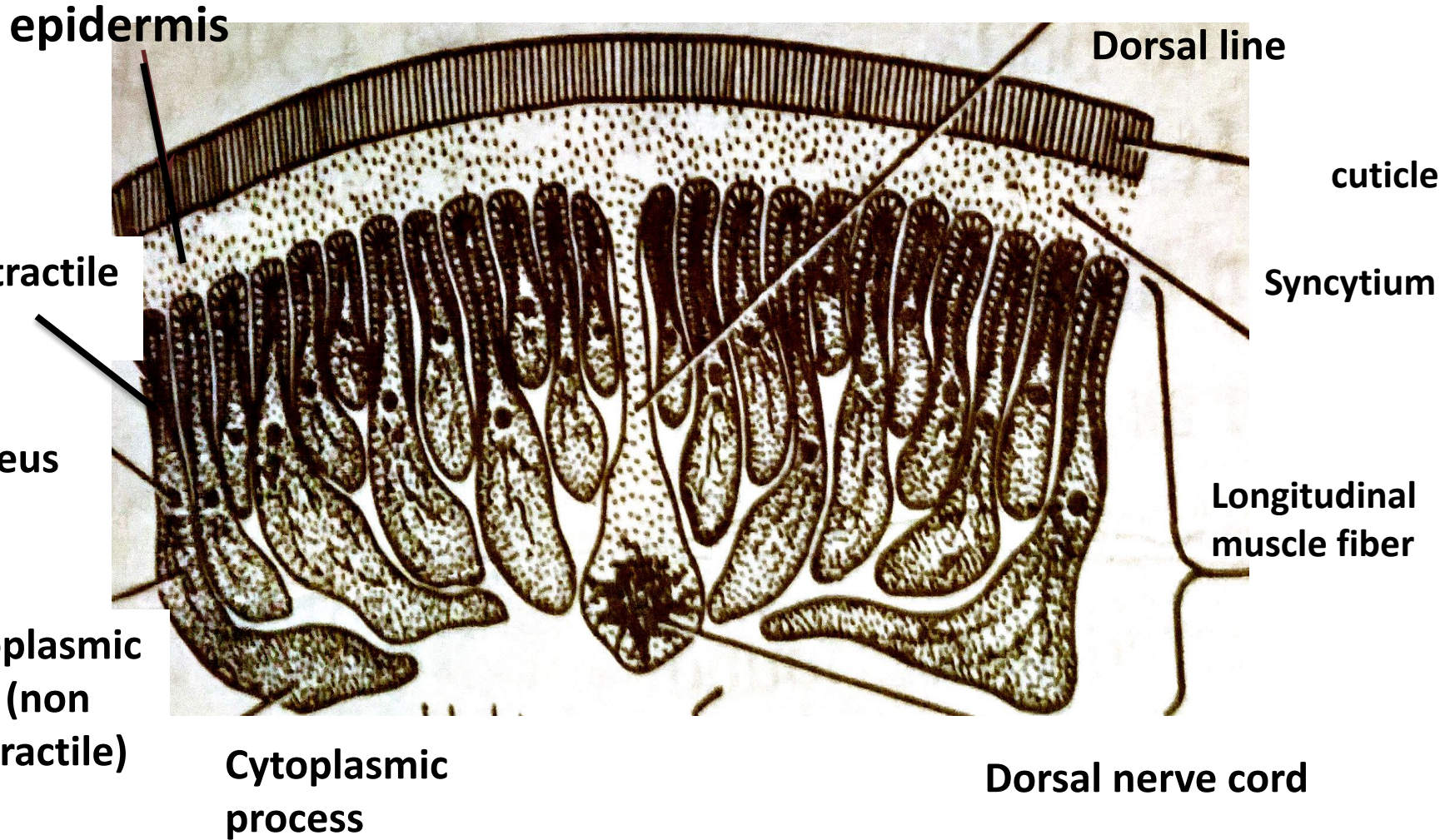
Dorsal line

Cytoplasmic part

Contractile part

Longitudinal muscle fibre

# Enlarged part of body wall



**THANK  
YOU**

