

A nighttime photograph of the London skyline. The sky is a deep blue. In the foreground, the River Thames flows, with a bridge and buildings illuminated by warm lights. The middle ground is filled with various buildings, including the prominent white dome of St. Paul's Cathedral. In the background, several modern skyscrapers are lit up, with one on the left having a distinctive blue and green top section. The overall scene is a vibrant cityscape at night.

# LONDON FOR YOU

## SIGHTSEEING TOUR

**Made by Snezhana Kruts, the teacher of English, Gorodyshe secondary school no.3, Gorodyshe town, Cherkassy region**

# **THE AIM:**

---

- 1.To review the material about London and check the pupils' speaking skills.**
- 2.To broaden the pupils' outlook**
- 3.To form the pupil's ability of using their imagination while discussing different situations.**



# THE TOWER OF LONDON

- It was a fortress, a palace and a prison many years ago. Now it is a museum.





# TOWER BRIDGE

☐ *All travelers are hurrying to make a photo with this bridge on the background...*





# BIG BEN

- The biggest and the most exact clock in the world with a chimney inside



visitBritain.com





# ***ST. PAUL'S CATHEDRAL***

- ▣ It is the masterpiece of the well-known English architect Christopher Wren



# *WESTMINSTER ABBEY*

- It is famous for its architecture and historical associations. All kings and queens were crowned in the Abbey. Many famous people were buried here.





# BUCKINGHAM PALACE

- ▣ *It is known all over the world to be the home of Britain's kings and queens*





# TRAFALGAR SQUARE

An aerial photograph of Trafalgar Square in London. The square is a large, open public space with a central monument, Nelson's Column, which is a tall, white, fluted column topped with a statue of Admiral Lord Nelson. The square is surrounded by several large, ornate buildings, including the National Gallery on the left and the Admiralty Arch at the top. In the foreground, there are two large, circular fountains with blue water and white stone surrounds. The square is filled with people, cars, and red double-decker buses. The overall scene is a busy, historic urban center.

It was named in memory of Nelson's great Victory under the Trafalgar



# PICCADILY CIRCUS

- It is considered to be the heart of the West End. It is the place where 6 streets cross over one another





# ***THE BRITISH MUSEUM***

- One of the world famous historic museums and the largest museum of Great Britain



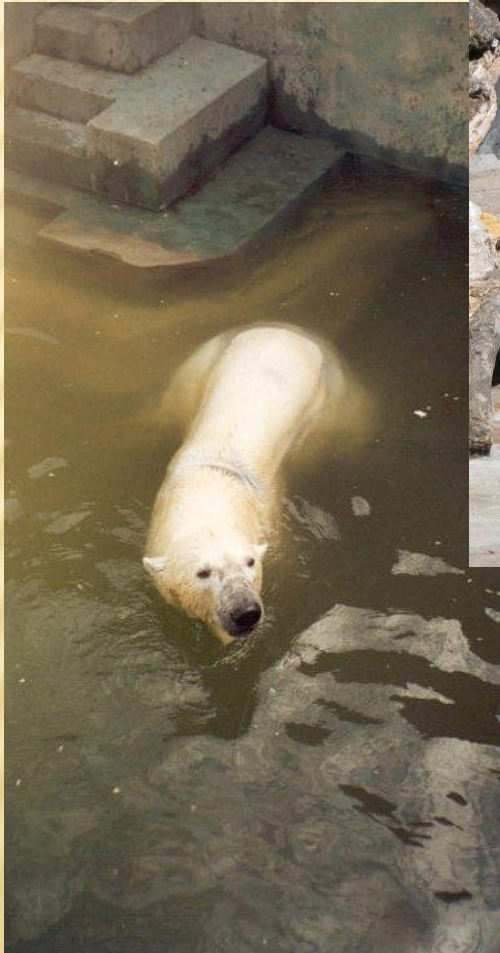


# “DOUBLE-DECKER” (A BUS) AND “BLACK CAB” (A TAXI)





# FAMOUS LONDON ZOO





# WHAT HAVE YOU LEARNED ABOUT LONDON?

---

- What is London?
- What river does London stand on?
- What famous clock can you see in London?
- What is “the double-decker” and “the black cab”?



- Is there a National Gallery in London?

---

- Is there a Monument of Admiral Nelson in London?
- Where is the Monument of Admiral Nelson?
- Is there a Buckingham Palace in London?
- What is the Buckingham Palace?
- What means the flag on the Palace?
- Are there any churches in London?
- What are their names?



# **Which of these words are connected with London?**

---

- **France**
- **Bohdan Khmelnytskyi monument**
  - **St. Paul's Cathedral**
    - **Eiffel Tower**
  - **Westminster Abbey**
    - **The Dnipro**
    - **The Thames**
  - **The Tower Bridge**



# Are the following statements true or false?

- 1. London is a capital of Great Britain .
- 2. The population of London is about eight thousand people.
- 3. Tower bridge crosses the river Avon.
- 4. Tower of London is a shop.
- 5. Big Ben is a clock.
- 6. Westminster Abbey is a church.
- 7. There are not many parks in London.
- 8. There is the oldest metro in London.



# ***1. WHICH RIVER RUNS THROUGH LONDON?***

---

- **A) the Thames**
- **B) the Severn**
- **C) the Seine**



## **2. CHOOSE THE RIGHT ANSWER**

---

**There are a lot of ... over the river Thames.**

- a) cinemas;**
- b) bridges;**
- c) banks.**



### 3. CHOOSE THE RIGHT ANSWER

**... is the most famous bridge in London.**

- a) Westminster Br**
- b) Tower Bridge;**
- c) London Bridge.**



## 4. CHOOSE THE RIGHT ANSWER

**From the Tower Bridge you can see the**

**...**

- a) Westminster Abbey**
- b) St. Paul's Cathedral**
- c) Tower of London.**





## 5. CHOOSE THE RIGHT ANSWER

Who founded the Tower of London?

- A) Charles I
- B) William I
- C) Henry VIII



## 6. CHOOSE THE RIGHT ANSWER

# Where is the Trafalgar Square?

- a) in the centre of London
- b) in front of the Buckingham Palace
- c) in the East End





## 7. CHOOSE THE RIGHT ANSWER

**The Monument of Admiral Nelson is ...  
of the Trafalgar Square**

- a) in the center
- b) to the left
- c) to the right



## 8. CHOOSE THE RIGHT ANSWER

Piccadilly Circus is a meeting place of ... streets.

- a) five
- b) seven
- c) six





# 9. CHOOSE THE RIGHT ANSWER

The Guard at the Buckingham Palace is changed at ... every day.

- a) 11 o'clock
- b) 12 o'clock
- c) 10 o'clock



# 10. CHOOSE THE RIGHT ANSWER

The oldest churches of London are...

- a) Westminster Abbey and St. Paul's Cathedral
- b) St. Paul's Cathedral and Andriivska Church
- c) St. Sophia's Cathedral and Westminster Abbey





# 11. ANSWER THE QUESTION

**What is the Buckingham Palace?**

- ❑ a) the house of president
- ❑ b) the residence of prime-minister
- ❑ c) the residence of Queen



# 12. ANSWER THE QUESTION

Who designed the St. Paul's Cathedral?

- a) the queen
- b) Francis Drake
- c) Christopher Wren





# 13. CHOOSE THE RIGHT ANSWER

The oldest part of London is...

- a) the East End
- b) the Westminster
- c) the City



# 14. CHOOSE THE RIGHT ANSWER

Hyde Park is...

- a) a zoo
- b) a palace
- c) a place where londoners can relax and go for a picnic





# 15. CHOOSE THE RIGHT ANSWER

Hyde Park is famous for...

- a) Speaker's Corner
- b) Flower Corner
- c) Poet's Corner



# 16. ANSWER THE QUESTION

“The Globe” is...

- a) Museum
- b) Shakespeare’s theatre
- c) Poet’s Corner





# 17. CHOOSE THE RIGHT ANSWER

**Madame Tussaud's is a museum which is famous for...**

- a) modern art
- b) different pictures
- c) wachs figures



# CHECK YOUR ANSWERS

---

- **1. a**
- **2. b**
- **3. b**
- **4. c**
- **5. b**
- **6. a**
- **7. a**
- **8. c**
- **9. a**
- **10. a**



A night-time photograph of the London skyline, featuring the Tower Bridge and various city buildings illuminated. The sky is filled with a vibrant display of fireworks, with streaks of light and bursts of color. The text is overlaid in a stylized, red, serif font with underlines.

*YOU ARE WELCOME*  
*TO LONDON -*  
*THE CAPITAL OF*  
*GREAT BRITAIN*